



Hydrographic Commission on Antarctica

National Report by  
**United States**

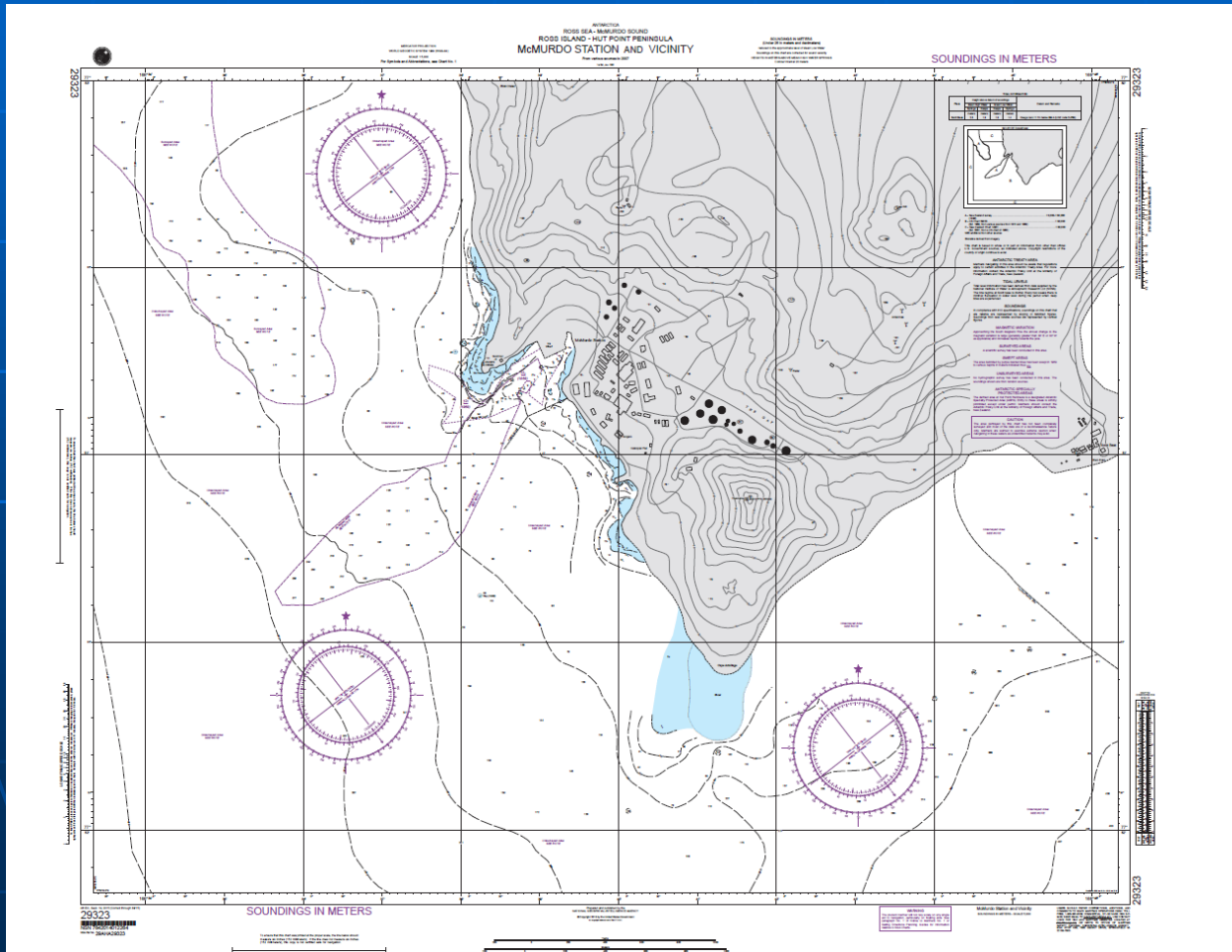
# Survey and charting progress in Antarctica since last meeting (December 2013)

- ✦ new charts produced (INT, national, ENC)
  - NGA has produced one national chart with two others in work
- ✦ areas surveyed
  - The Lamont-Doherty Earth Observatory under the auspices of the National Science Foundation conducted numerous trackline surveys
- ✦ NGA has done no risk assessment studies
- ✦ The Polar Code has had no impact on our activities



# New National Chart (29323)

✦ NGA completed a new edition of Chart 29323



# National Charts in work

- ✦ 29282- Scott Island and Vicinity (new chart requested due to geodetic inaccuracy)
- ✦ 29322- Cape Royds to Hut Point (approach chart to McMurdo Station)



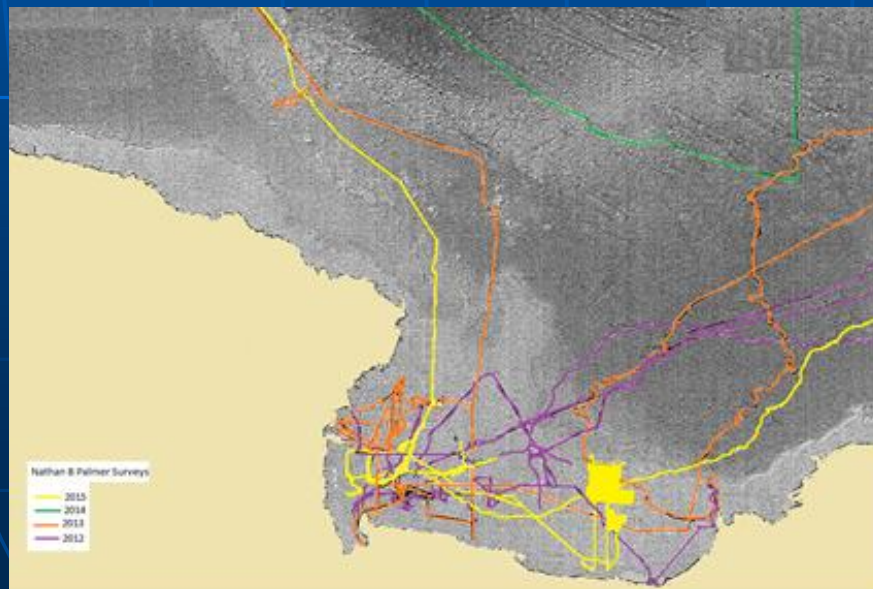
# Surveys since last HCA

- ✦ Surveys done by research vessel M/V Nathan B. Palmer
- ✦ Surveys data available at NOAA's National Center for Environmental Information:

<http://www.ncei.noaa.gov/mgg/bathymetry/relief.html> or

at Marine Geoscience Data System (MGDS)

<http://www.marine-geo.org/portals/antarctic>.



# Status of Relations with Other Organizations

- ✦ NGA has contacts with the National Science Foundation, the lead organization for Antarctic research in the U.S.
- ✦ NGA has received hydrographic information from NCEI and MGDS
- ✦ Since HCA 13 NGA has provided rectified commercial imagery to Argentina for the production of their Antarctic charts



# Planned Activities for 2016-17

- ✦ Completion of Charts 29282 and 29322
- ✦ Neither NOAA or the US Navy are planning Antarctic surveys for 2016 or 2017
- ✦ Will contact National Science Foundation to ascertain research surveys



# Any other matters of relevance to HCA

- ✦ NGA continues to expand its ENC portfolio
  - Panama (until superseded by Panamanian charts)
  - Haiti
  - Pacific Islands (Palau, Marshall Islands, FOM)
  - Antarctica INT charts

