



Hydrographic Commission on Antarctica

Report on the  
INT Chart and ENC Scheming and  
Production Status for Region M  
(HPWG Chair)  
HCA15 Niteroi, Brazil 2018

# INT chart and ENC progress since HCA14)

- ✦ Current number of charts in INT Region M is 117
- ✦ 90 charts published up to June 2018
- ✦ New INT charts published since HCA14 is 12, 9128(ES), 9104 & 9103(CL), 9125(BR & PE), 9000(IT), 905(DE), 9111(AR) & 9117, 9165, 9131, 9159 & 9160(UK)
- ✦ New ENCs published since HCA14 is 29, Argentina x2, Chile x2, Brazil/Peru x2, France x4, Italy x1, Germany x1, Spain x1, USx2, Japan x7 & UK x7.

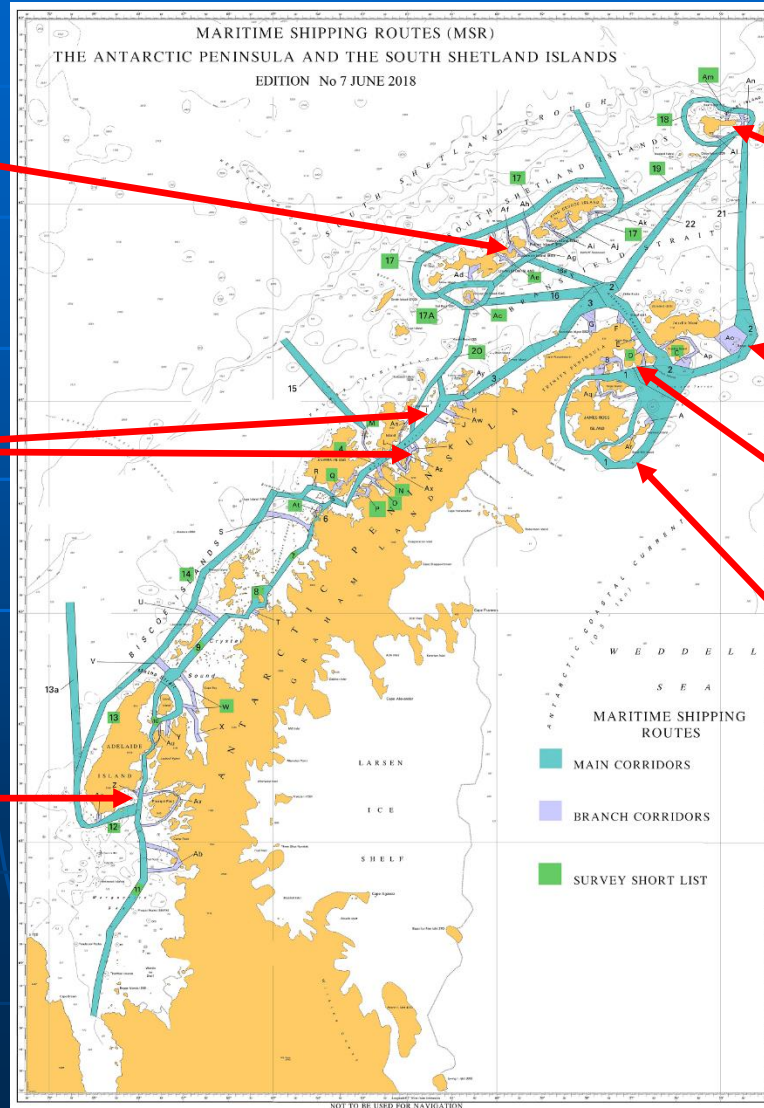


- ✦ New INT charts and ENC's planned for 2018/19 is 5: 9166, 9114\* & 9113\* (UK), 9140 & 9101 (Arg)

(\* Amendment to INT scheme, to be discussed)



# New INT chart proposals from UK and amendments to scheme from INT Coordinator - Region M



Robert Point

INT9113

INT9112

INT9116

INT9130

INT9133

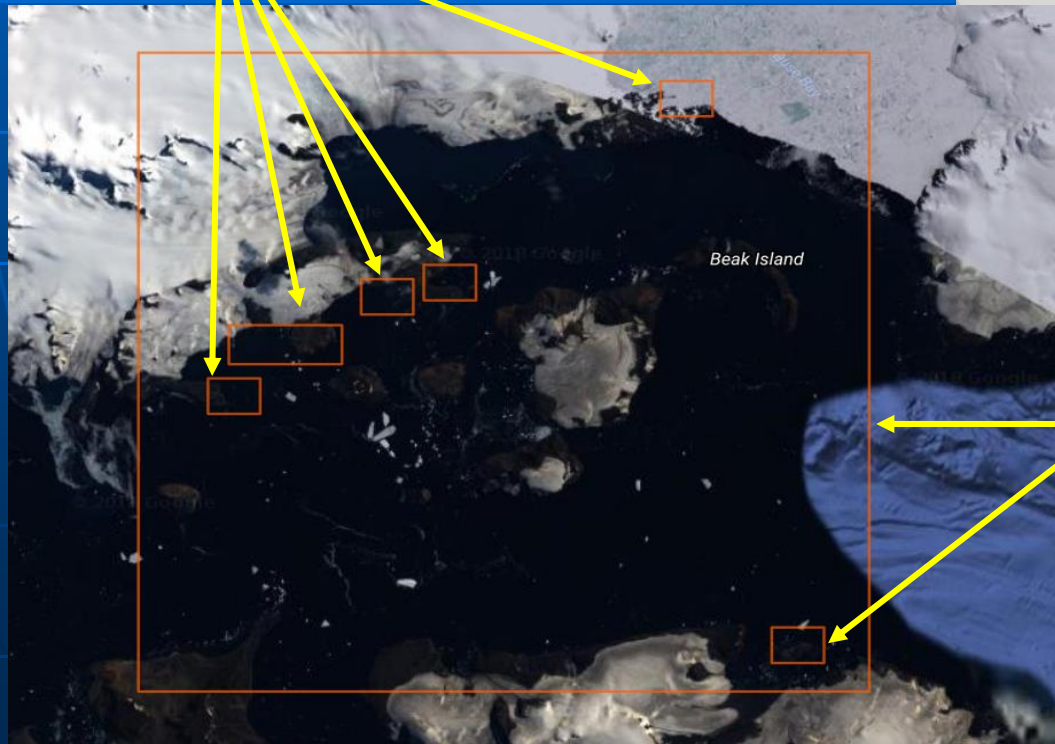
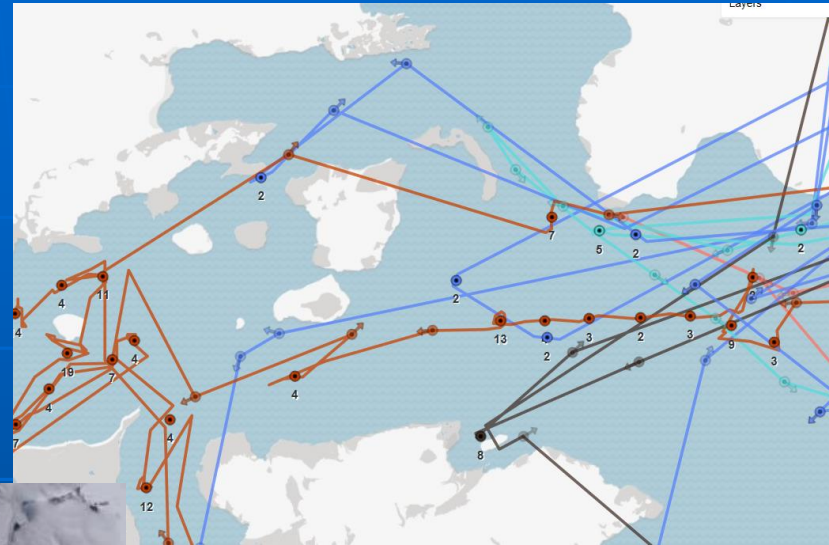
Biscoe Wharf  
and Horseshoe  
Island



# INT 9130

# Current vessel movements.

No vessel visits, propose  
remove



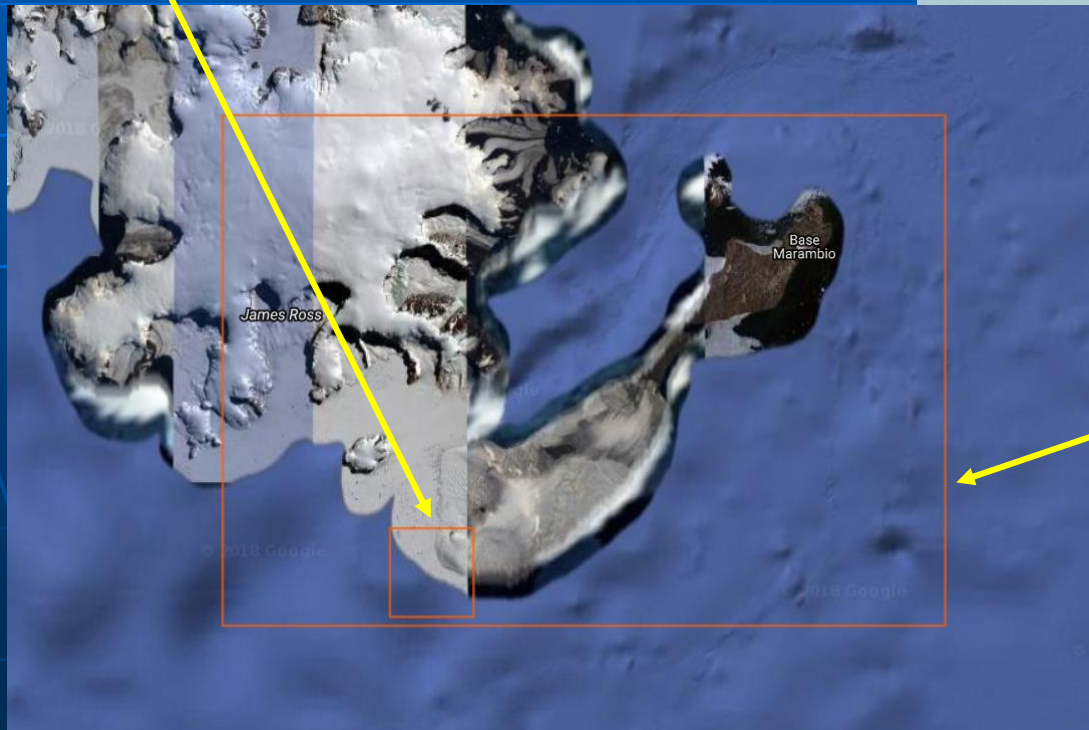
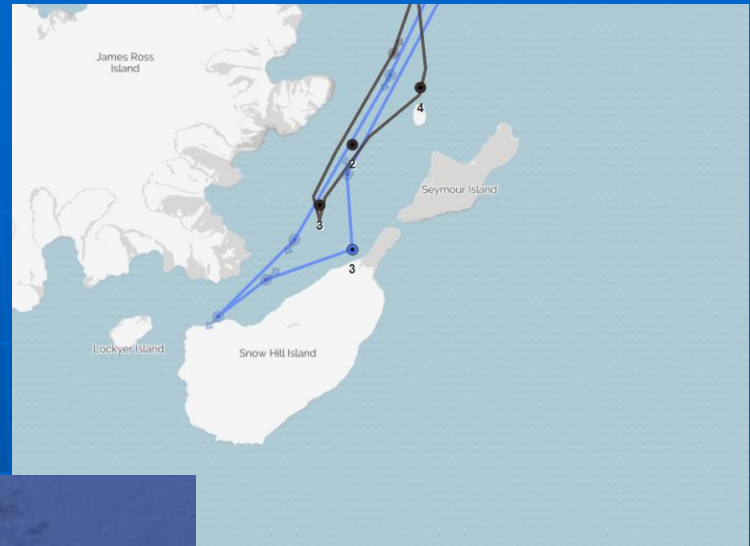
Vessel transit and  
visits, propose  
retain



# INT 9133

# Current vessel movements.

No vessel visits, propose  
remove



Vessel transits  
retain



# INT 9113

## Current vessel movements.

Cape Valentine

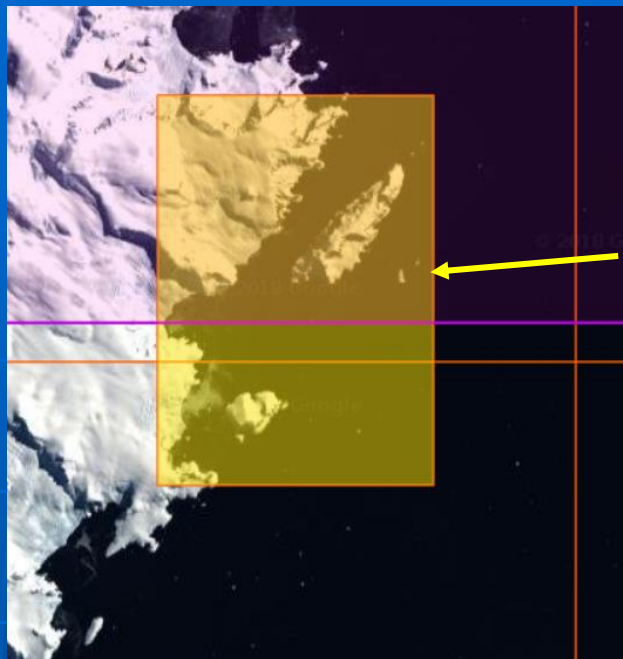
Very few vessel visits (174pax),  
propose remove



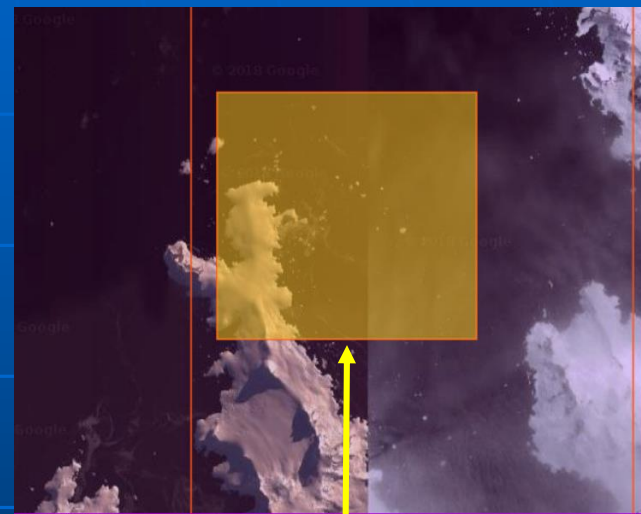
Vessel visits  
retain



# INT 9112

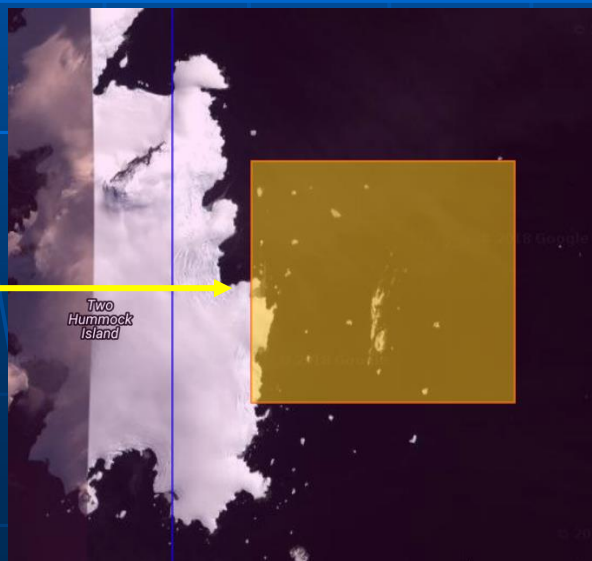


Freud Passage. No vessel traffic, propose remove



Portal Point. To be charted on INT9166, propose remove.

Hydrurga Rocks.  
Already charted  
on INT 9165,  
propose remove

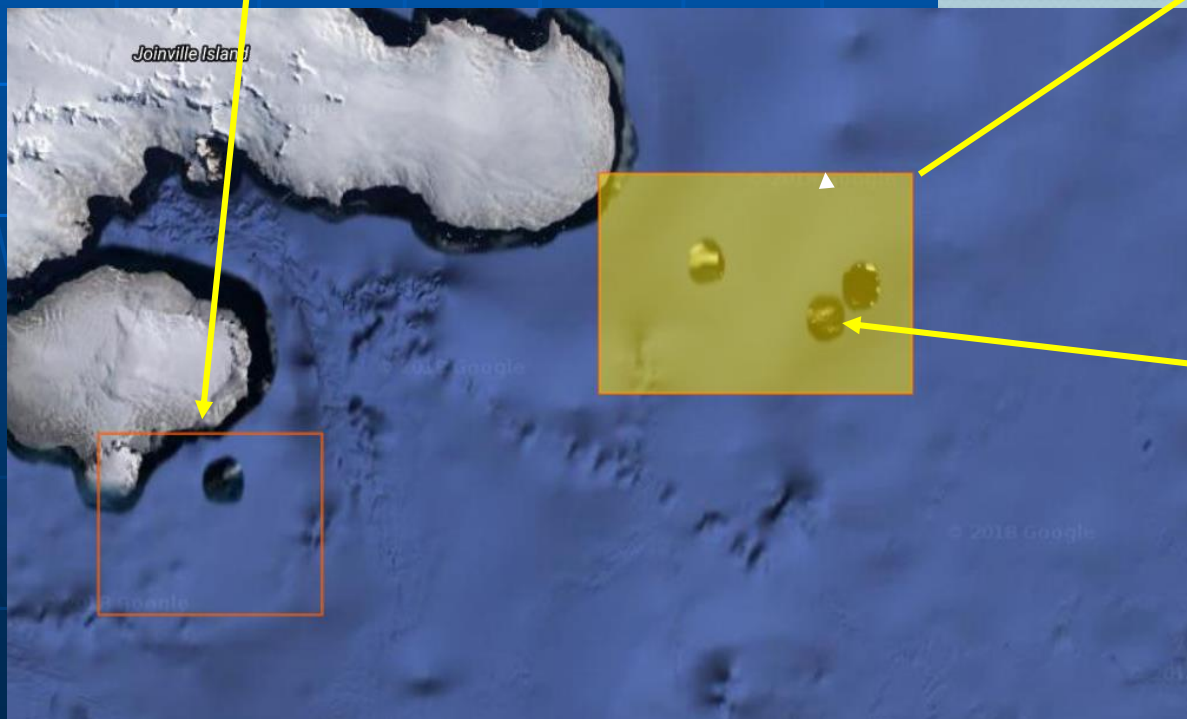
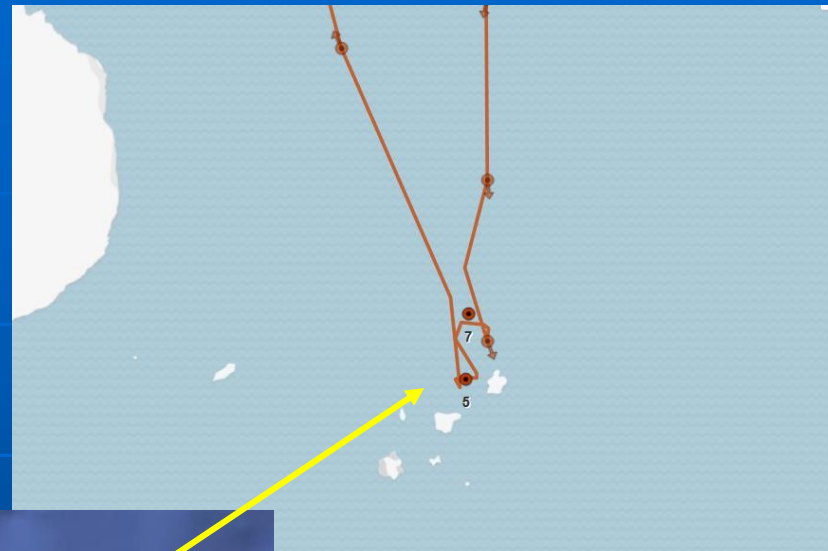




# INT 9116

# Current vessel movements.

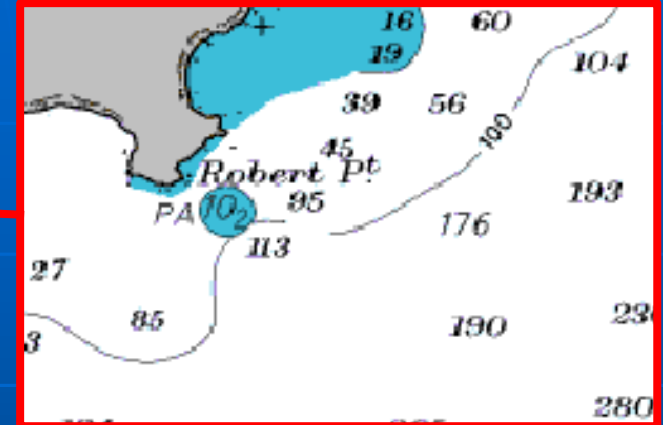
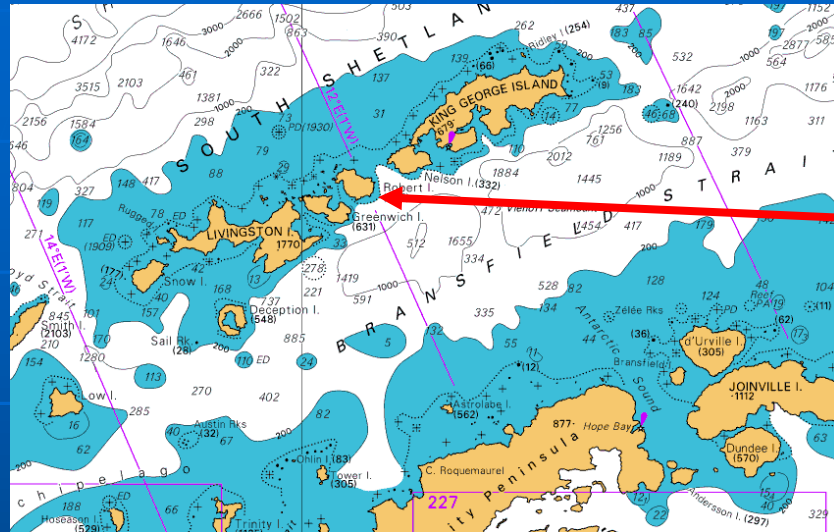
Vessel visits, retain.



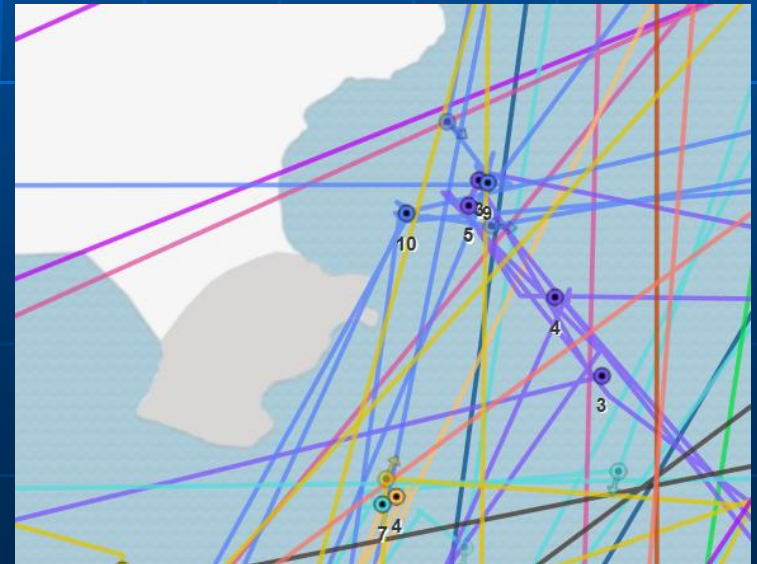
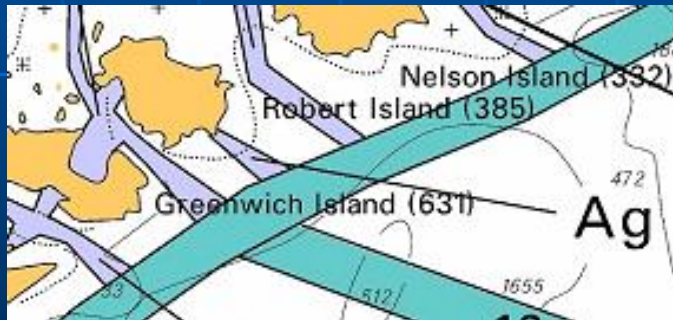
Limited vessel visits, propose remove



# Proposed new INT chart for Robert Point, Robert Island, South Shetland Islands.



Current vessel movements

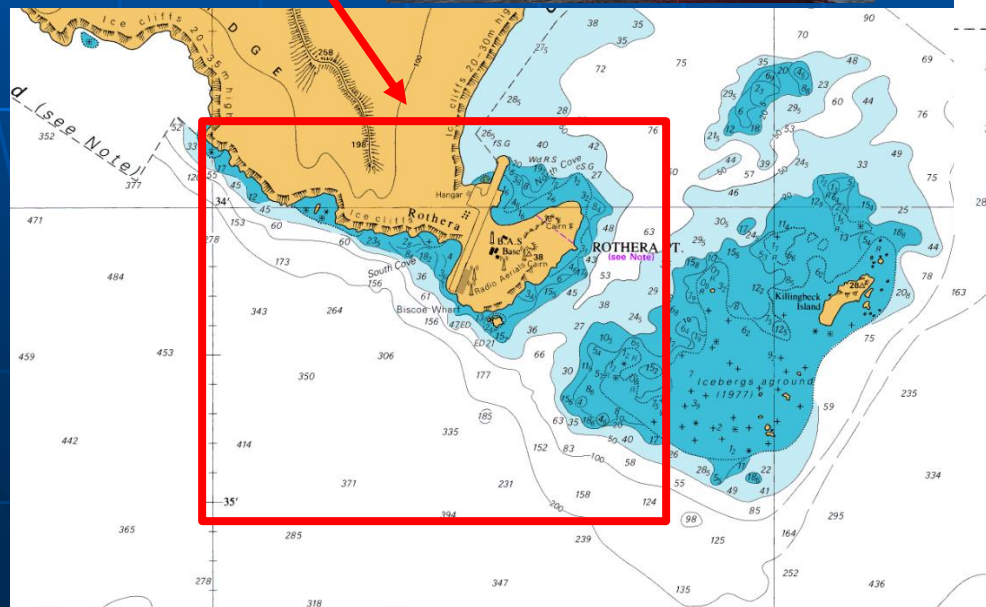
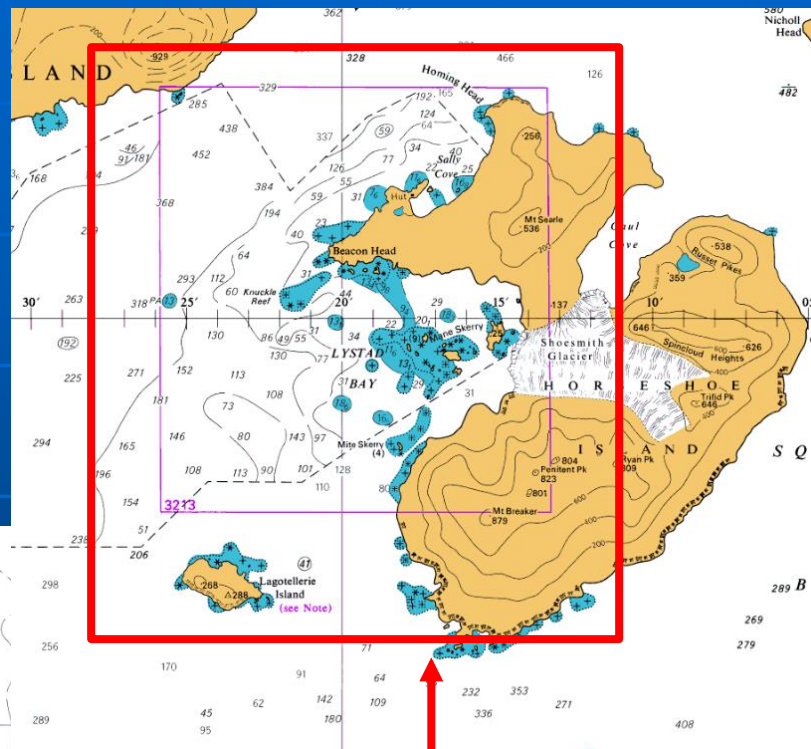


Existing MSR corridor "Ag"  
2045 pax "2018/19"



# Proposed New INT chart of Horseshoe Island and Biscoe Wharf

New large scale plan of Biscoe Wharf, Rothera Station, for berthing of new BAS vessel



New plan of Lystad Bay and Sally Cove for increased vessel traffic



# Proposed additions, amendments and deletions to Region M INT scheme

- ✦ INT9112 – Yankee Harbour, Penguin Island, Robert Point, Point Wild and Cape Lookout
- ✦ INT9113 – Biscoe Wharf & Horseshoe Island (New)
- ✦ INT9114 – Fridtjof Sound, Brown Bluff & Paulet Island
- ✦ INT9130 – Crystal Hill to Devil Island, Devil Island, Gourdin Island and Approaches to Snow Hill Island

Scheme is now more geographically logical and has freed up INT9116 & INT9133 for future use



## Plans deleted from INT scheme:

- ✦ Freud Passage, Portal Point & Hydrurga Rocks (INT9112)
- ✦ Cape Valentine (INT9113)
- ✦ Danger Islands (INT9116)
- ✦ Bald head, View Point, Matts Head, Crystal Hill & Camp Point (INT9130)



# INTernational Chart Web Catalogue

- ✦ Region M continually updated as charts are published.
- ✦ All HCA15 amendments to be inserted into database.

The screenshot displays the International Chart Web Catalogue interface. At the top, there is a navigation bar with 'CHART SEARCH', 'MANUAL DOWNLOAD', and 'Manager' (with a globe icon). A search bar contains 'SeaWay' and 'Search'. Below the navigation bar, a yellow warning banner states: 'You are using a browser that is not supported by the Google Maps JavaScript API. Consider changing your browser. Learn more Dismiss'. The main interface is divided into several sections:

- SEARCH Option:** Includes fields for 'INT Region' (set to 'M'), 'CHART Scale', 'Prod.Nation', 'Pub Year', and 'Status' (set to 'All'). A 'Reset' button is also present.
- CHART List:** A list of 113 items, including '900:Ross Sea', '901:De Cape Goodenough ...', '902:Mawson and Davis Seas', '903:Sodruzhestva Sea an...', '904:Dronning Maud Land', '905:South Sandwich Isla...', '906:Weddell Sea', '907:Antarctic Peninsula', '908:Bryan Coast to Mart...', '909:Mount Siple - Cape ...', '9000:Terra Nova Bay to M...', and '9001:Cape Royds to Pram ...'. A 'DOWNLOADs' button is located below the list.
- Map:** A satellite-style map of the Antarctic region with several colored rectangular overlays (blue, orange, purple) indicating chart areas. A large 'M' is visible on the map.
- CHART Layers:** A panel on the right side of the map showing 'All Layers' and a list of layers: 'OverView', 'General' (checked), 'Coastal' (checked), 'Approach' (checked), 'Harbour' (checked), and 'Berthing' (unchecked).
- Map Controls:** A vertical toolbar on the right side of the map with various navigation and zooming icons.
- Coordinates:** At the bottom right, the coordinates '134° 15.28' W / 78° 28.43' S' are displayed.
- Footer:** The Google logo is at the bottom left, and 'Map data ©2016 Imagery ©2016 NASA, TerraMetrics Terms of Use' is at the bottom right.



# IHO HCA collaboration with IAATO

- ✦ Since HCA13 the Region M Coordinator has been given access to the IAATO AIS vessel tracker
- ✦ Great insight into ships movements and highlighting areas where INT chart/ENC coverage is lacking and requires larger scale charting
- ✦ MS are encouraged to investigate whether Government/Scientific vessel AIS data can be supplied to INT Coordinator

