

12^h September 2011

**HCA Survey Prioritisation Working Group
Letter No. 1/2011**

To: Members of the Hydrographic Commission on Antarctica
Subject: **IHO Hydrographic Commission on Antarctica. HCA10.
Decisions and actions Item No 10/27.**

Dear Members,

Reference: IHO HCA letter 03/2011.

1. This circular letter refers to the Decisions and Actions resulting from the HCA10 meeting in Cambridge UK.
2. Action item 10/27 requests Member States to: *Provide the HSPWG Chair with information on Maritime Shipping Routes (MSR) and survey requirements, to be reflected in the HCA survey plans.*
3. With the meeting fast approaching, I have yet to receive any responses. Would all members please review the attached Survey Plan and accompanying MSR graphic and provide me with any feedback and additional requirements. Details of completed and forthcoming survey tasking will also be extremely useful to update the prioritised plan.
4. To maintain momentum, **responses, by E-mail, are requested by 26th September 2011.** Thank you for your support.



Andy Willett
Chairman IHO HCA Survey Prioritisation WG

Annexes:

Long Term Survey List

HCA LONG TERM SURVEY PLAN
Updated to September 2010

Table of MSRs, base/site calls, usage category, and current survey category

Note: In the tables below, high priority surveys have been emphasized in **yellow**. Indications of planned surveys appear in **red**. Indications of surveys completed appear in **blue**.

I. ANTARCTIC PENINSULA

Categories

Category	Usage
A	Frequent
B	Regular
C	Infrequent

Category	Current survey status
A	Adequately surveyed
B	Requires re-survey at larger scale or to S-44 standard
C	Has not been systematically surveyed/Unsurveyed

Main corridors (see diagram on last page for MSR references)

MSR *	Name	Usage category	Survey category	Notes and INT chart coverage. Published and <i>proposed</i> .
1	James Ross Island circular route	B+C	A + C	Prince Gustav Channel & Eastern corridor 55% surveyed. 45% unsurveyed. <i>Blocks surveyed by UK 2005-07. Blocks planned by UK for future seasons.</i> INT 9153
2	Joinville Island circular route	A+B	A + C	45% surveyed (Antarctic Sound), 55% unsurveyed. <i>Blocks surveyed by UK 2005-07 and Uruguay & Venezuela 2008. Blocks planned by UK for future seasons</i> INT 9154
3	Orleans Strait to Antarctic Sound	B	B + C	INT 9155
4	Gerlache strait	A	A + C	96% surveyed. INT 9156 & 9157 Blocks surveyed by Chile 2010 & UK 2005-07 also Flandres Bay 35% surveyed
5	Bismarck Strait	A+B	A + B	Approaches to Palmer Station and Port Lockroy. INT 9158. <i>Block surveyed by UK 2005-06, 2011 & Chile 2010</i>
6	Lemaire Channel	A	A+B	Petermann Is, Pleneau Is, Argentine Is, Yalour Is. 65% surveyed. INT 9106. <i>Block surveyed by UK 2005-06</i>
7	Grandidier Channel	A+B	B	INT 9158 & 9159
8	Cape Garcia to Jagged Island	B	C	INT 9159
9	Crystal Sound	B	B	Numerous reports of uncharted rocks. INT 9160
10	Liard Island to Rothera	B	C	INT 9161, 9108 AND 9163
11	Marguerite Bay	C	B + C	INT 9163 & 9164
12	Woodfield Channel	C	B	INT 9163
13	Woodfield Channel to Matha Strait	B	C	INT 9162 & 9160
14	Matha Strait to Hugo Island	B	C	INT 9160, 9159 & 9158
15	Hugo Island to Low Island	B	B + C	INT 9156, 9157 & 9158

* MSR = Maritime Shipping Route. The figures / letters in this column are shown on the MSR diagram which is on the last page.

16	Low Island to Antarctic Sound	C	B + C	INT 9154, 9155 & 9156. <i>Blocks planned by UK for future seasons</i>
17	South Shetlands MSR	A	A+C	INT 9151. SW corridor surveyed by UK, Livingstone Island to Penguin Island complete. <i>Blocks surveyed by UK 2005-11 and Brazil 2007-08</i>
17A	Deception Island circular route	A	A	INT 9120 Deception Island circular route 100% complete. <i>Blocks surveyed by UK in 2005-08</i>
18	Elephant Island MSR	A+C	A+C	INT 9150 <i>Blocks surveyed by Brazil 2006</i>
19	Elephant Island to KGI	A	C	INT 9150, INT 9151 <i>Blocks surveyed by Brazil 2005</i>
20	Deception Is to Brabant Island	A	C	INT 9120, INT 9155, 9156, 9157 <i>Blocks surveyed by UK 2005-06</i>

Branch corridors and approaches

MSR	Name	Usage category	Survey category	Notes and INT chart coverage. Published and proposed
A	Marambio	B	C	INT 9100
B	Duse Bay and Eagle Island	B	C	Includes Crystal Hill. INT 9154
C	Paulet Island	A	A + C	50% surveyed, remaining area top of UKHO priority. INT 9112 <i>Blocks surveyed by UK 2005-06</i>
D	Brown Bluff and Fridtjof Sound	A	A+C	INT 9154 <i>Blocks surveyed by UK 2006-07</i> Approaches to Brown Bluff complete up to 50m contour
E	Hope Bay	A	A	INT 9101. 95% complete. <i>Blocks surveyed by UK 2006-07 and Uruguay 2008</i>
F	Gourdin Island and Siffrey Point	B	C	INT 9154
G	Bernado O' Higgins and approaches	C	C	INT 9102
H	Curtiss Bay	C	C	INT 9155 & 9156
I	Hydrurga Rocks	B	C	INT 9156 & 9157
J	Alcock Island	C	C	INT 9156 & 9157
K	Portal Point	C	A+C	INT 9112 <i>Charlotte Bay surveyed by UK 85% complete.</i>
L	Enterprise Island	B	C	INT 9157
M	Melchior Islands and approaches	A+C	A+C	INT 9157 <i>Blocks surveyed by UK 2005-06</i>
N	Errera Channel	A	A+C	Includes Cuverville Is, Danco Is and Ronge Is. INT 9103 70% complete. <i>Blocks surveyed by UK 2005-06</i>
O	Andvord Bay	A	A+C	Includes Neko Harbour. INT 9103. 70% complete. <i>Block surveyed by UK 2005-06</i>
P	Paradise Harbour	A	A+B	Almirante Station and Waterboat Point. INT 9104. Paradise Harbour 93%, Bryde Channel 90%, Furguson Channel 80%. <i>Blocks surveyed by UK 2007-08 & Chile 2010.</i>
Q	Neumayer Channel and Port Lockroy	A	A	100% complete. INT 9158 & 9104 <i>Blocks surveyed by UK 2005-06 & Chile 2010</i>
R	Arthur harbour	B	C	INT 9105
S	French Passage	B	B	INT 9106
T	Prospect Point	B	C	INT 9107
U	Pendleton Strait	B	B	INT 9159
V	Matha Strait	B	C	INT 9160
W	Detaille Island and approaches	C	C	INT 9161 Detaille Island now has Historic Monument status, and following restoration will receive increased vessel traffic.
X	Lallemand Fjord	C	C	INT 9161
Y	Shumskiy Cove	C	C	INT 9108
Z	Rothera	B	A	BAS and RN vessels. INT 9109. 100% complete. <i>Blocks surveyed by UK 2007-08</i>
Aa	Avian Island	C	B	INT 9110

MSR	Name	Usage category	Survey category	Notes and INT chart coverage. Published and proposed
Ab	Approaches to Millerand Island	C	B	INT 9111
Ac	Port Foster and Neptunes Bellows	A	A+B	INT 9120 Port Foster and Whalers Bay 95% complete. Neptunes Bellows needs multibeam survey to position Ravn Rock, controlling danger in very narrow passage. <i>Blocks surveyed by UK 2005-08</i>
Ad	South bay and Hannah Point	A	A	INT 9121. <i>Block surveyed by UK in 2006-07</i>
Ae	McFarlane Strait	A	A + C	Half Moon Is cat A, Yankee Harbour 100%, McFarlane Strait 50%. INT 9121 & 9112. <i>Blocks surveyed by UK in 2005-07</i>
Af	English Strait	A	A+B	Aitcho Islands and Discovery Bay. INT 9122 & 9152. 75% complete. NE section still unsurveyed. <i>Blocks surveyed by UK in 2005-07, Ecuador in 2004 and Chile.</i>
Ag	Robert Point	C	C	INT 9151
Ah	Nelson Strait	C	A+C	INT 9151. 80% complete. <i>Block surveyed by UK in 2005-07, Blocks surveyed by Chile in 2005-08</i>
Ai	Maxwell Bay and approaches	A	A+C	Ardley Cove, Marian Cove and Potter Cove. INT 9123. 80% complete. <i>Blocks surveyed by UK in 2005-07, Potter Cove surveyed by Argentina 2005-06, Uruguay 2008</i>
Aj	Admiralty Bay	A	A	Artowski Station, Ferraz Station and Martel Inlet. INT 9125. <i>Block surveyed by UK in 2006-07, Blocks surveyed by Peru 2002-06, Block surveyed by Brazil 2007-08. Block planned by Peru 2009</i>
Ak	Penguin Island and approaches	A	A+C	Endurance 2005 survey. INT 9151 <i>Approach channel surveyed by UK 2006, 50% complete.</i>
Al	Cape Lookout	B	C	INT 9112
Am	Point Wild	A	C	INT 9150
An	Cape Valentine	B	C	INT 9150
Ao	Danger Islands	C	C	INT 9154
Ap	Dundee Island	B	A+C	INT 9154 60% <i>Blocks surveyed by UK in 2005-07, Block surveyed by Argentina in 2005-07</i>
Aq	Herbert Sound	B	A+C	INT 9153. 90% complete. <i>Blocks surveyed by UK in 2005-07</i>
Ar	Historic Monument	B	C	INT 9153
As	Freud Passage	B	C	INT 9156 & 9157
At	Booth Is, Port Charcot	B	C	INT 9158
Au	Gunnel Channel	B	C	INT 9108 & 9161
Av	Pourquoi Pas Island	C	C	INT 9163 & 9161

II. MAINLAND ANTARCTICA**

Main corridors

MSR	Name	Usage category	Survey category	Notes and INT chart coverage. Published and proposed.
1	Hobart to Macquarie Island	C	A + B	Annual re-supply station by Aurora Australis. Tourist vessels and fishing boats Charts - Hobart AUS173 and 174 Macquarie Island – AUS604 Cape Darnley to Tasmania - INT 74 (AUS 4074)

** Australian Antarctic Division Submission

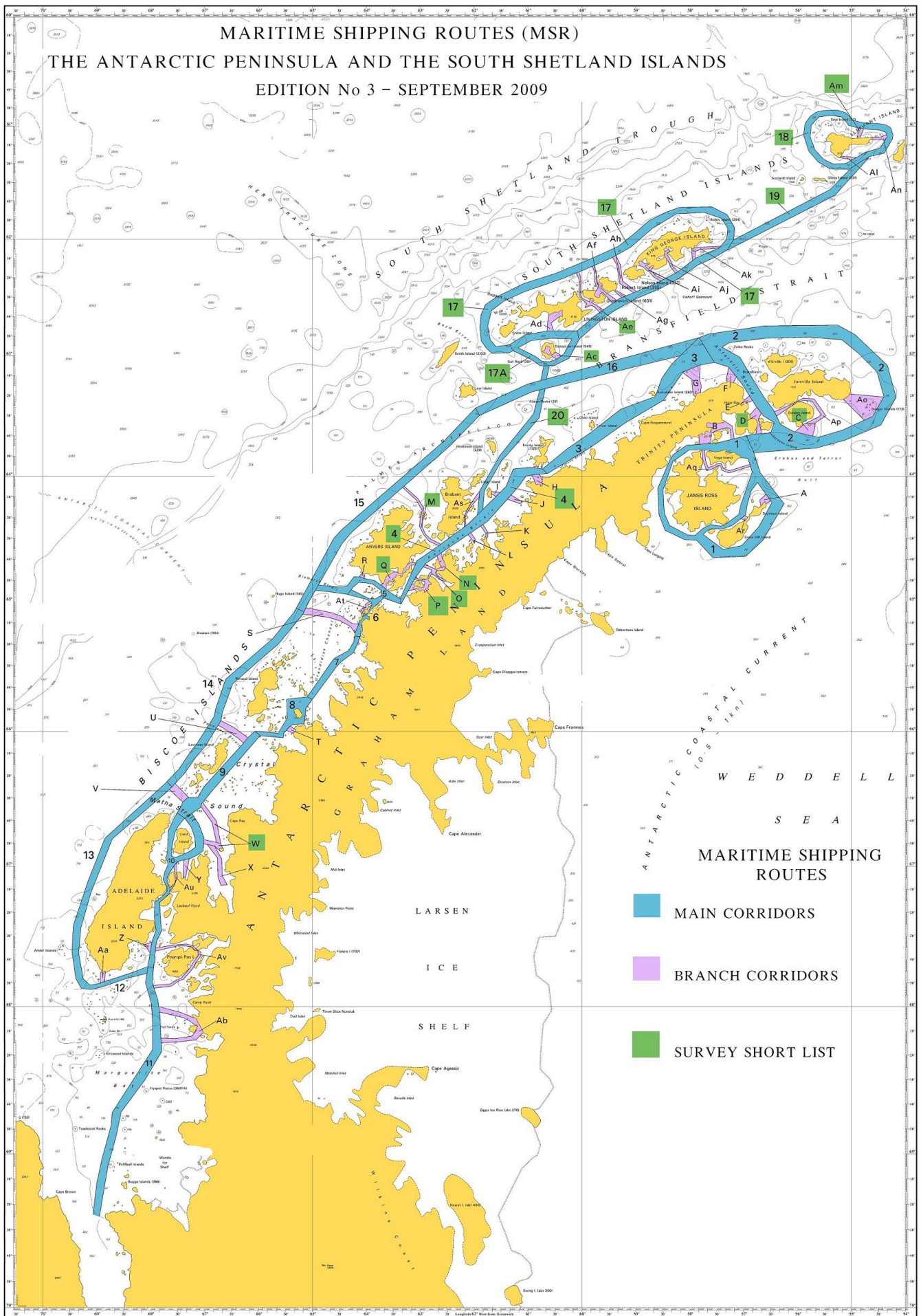
MSR	Name	Usage category	Survey category	Notes and INT chart coverage. Published and proposed.
2	Hobart to Casey station	C	A + B	Annual re-supply of station by Aurora Australis and other vessel plus occasional tourist vessels. Charts. Hobart AUS173 and 174 Casey - INT9021 (AUS601) Cape Darnley to Tasmania - INT 74 (AUS 4074)
3	Hobart to Davis	C	A + B	Annual re-supply of station by Aurora Australis and other vessel plus occasional tourist vessels Charts - Hobart AUS173 and 174 Davis – INT9032(AUS602) Cape Darnley to Tasmania - INT 74 (AUS 4074)
4	Hobart to Mawson	C	A+B	Annual re-supply of station by Aurora Australis and other vessel plus occasional tourist vessels Charts Hobart AUS173 and 174 Mawson – AUS600 Cape Darnley to Tasmania - INT 74 (AUS 4074) Magnet bay to Cape Rouse – AUS449
5	Hobart to Heard Island	C	A+C	Marine science voyage by Aurora Australis, customs patrol vessels plus occasional tourist and fishing vessels. Charts Hobart AUS173 and 174 Heard Island – AUS605 Cape Darnley to Tasmania - INT 74 (AUS 4074) Magnet bay to Cape Rouse – AUS449
6	Fremantle to Heard Island	C	A+C	Marine science voyage by Aurora Australis, customs patrol vessels plus occasional tourist and fishing vessels.
7	Hobart to Commonwealth Bay	C	A+C	Occasional visits by Aurora Australis, Astrolabe and occasional tourist vessels Charts - Hobart AUS173 and 174 Commonwealth Bay – AUS603
8	Davis to Larsemann Hills	C	A+C	Occasional visits by Aurora Australis, Chinese re-supply vessel Xue Long and Russian re-supply vessels. No charts exist of the approaches to the Larsemann Hills
9	Davis to Sansom Island	C	C	No chart coverage except at small scale. Scandjeford bay to cape Rundingen – AUS 452 scale 1:500,000
-	Hobart and Fremantle to Southern Ocean	C	A+C	Marine science voyages

Branch corridors and approaches

MSR	Name	Usage category	Survey category	Notes and INT chart coverage. Published and proposed
	Macquarie Island	C	A+C	AUS604
A	Casey	C	A+C	INT9021 (AUS601)
B	Davis	C	A+C	INT9032(AUS602)
C	Mawson	C	A+C	AUS600
D	Commonwealth Bay	C	C	AUS603
8	Davis to Larsemann Hills	C	C	No chart coverage except at small scale. Sandjeford Bay to Cape Rundingen – AUS452

				scale 1:500,000
9	Davis to Sansom Island	C	C	No chart coverage except at small scale Sandjeford Bay to Cape Rundingen – AUS452 scale 1:500,000

MARITIME SHIPPING ROUTES (MSR)
 THE ANTARCTIC PENINSULA AND THE SOUTH SHETLAND ISLANDS
 EDITION No 3 – SEPTEMBER 2009



MARITIME SHIPPING ROUTES

- MAIN CORRIDORS
- BRANCH CORRIDORS
- SURVEY SHORT LIST

**MARITIME SHIPPING ROUTES (MSR)
MAINLAND ANTARCTICA
EDITION No 1 - SEPTEMBER 2010**

**MARITIME SHIPPING
ROUTES**
■ MAIN CORRIDORS

