



Saint-Mandé, 28th October 2010

N° 162 SHOM/DSPRE/NP

SERVICE HYDROGRAPHIQUE ET
Océanographique de la Marine

Directorate of Policy, Plans &
External Relations

Dossier suivi par :

IETA Céline Roux

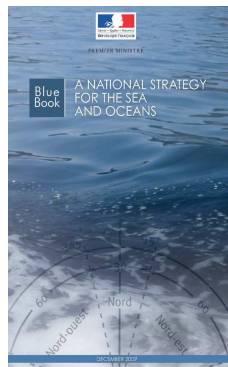
Téléphone : 33 1 53 66 97 81

Fax : 33 1 41 74 94 25

Mail : celine.roux@shom.fr

French national report to the 11th meeting of the Meso-American and Caribbean Hydrographic Commission (MACHC)

1. Hydrographic Office updates



In 2009, the President of the French Republic introduced the foundations of a new national maritime integrated policy which was followed soon after by the adoption of *a national strategy for the sea and the oceans*¹ by the Interministerial Committee of the Sea

This year, the speed has been set within SHOM in order to align the programme of work with the French Blue Book strategy. After 3 years of intensive work and the approval of the SHOM's Board of Directors, the Minister of Defence signed on 21st July 2010, SHOM's first targets and performance contract for 2010 – 2012.

No efforts will be spared to meet the various requirements of this contract, while improving the visibility of SHOM's capacities and strengthening our partnerships, especially in this era of comprehensive public policy reviews and financial crisis.



SHOM contributes actively to this momentum without neglecting its three core missions: the national hydrographic service, the environmental support to defence and the support to maritime and coastal public policies.

Ingénieur général Bruno Frachon (vice-admiral) was appointed new SHOM's director general on 24th June 2010, while *Ingénieur général Gilles Bessero* is remaining chairman of the IRCC until the next Assembly/International Hydrographic Conference (2012).

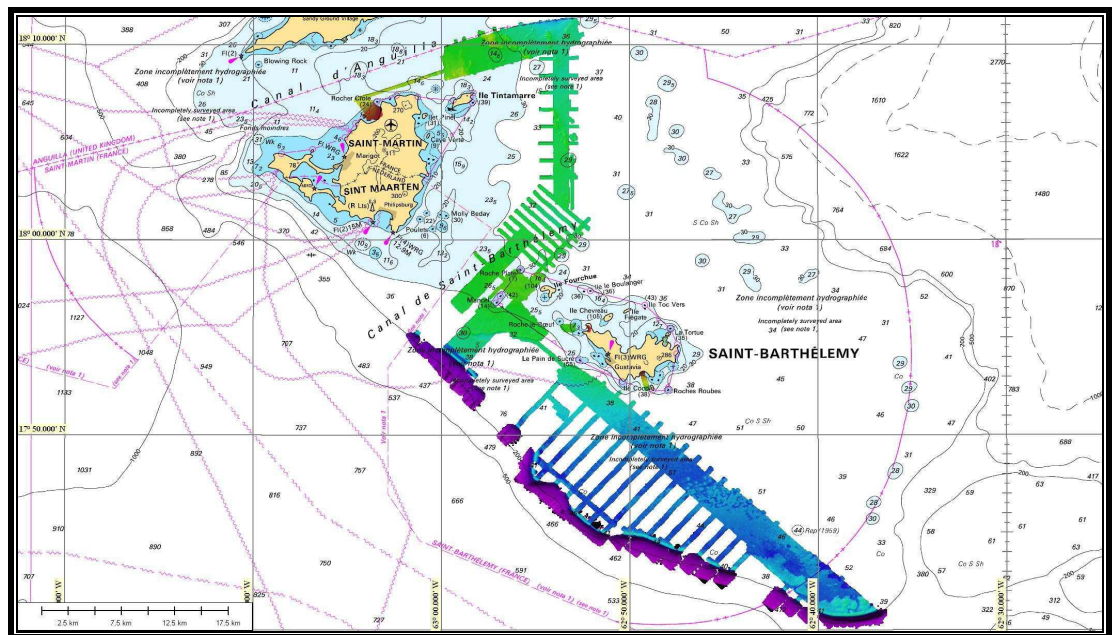
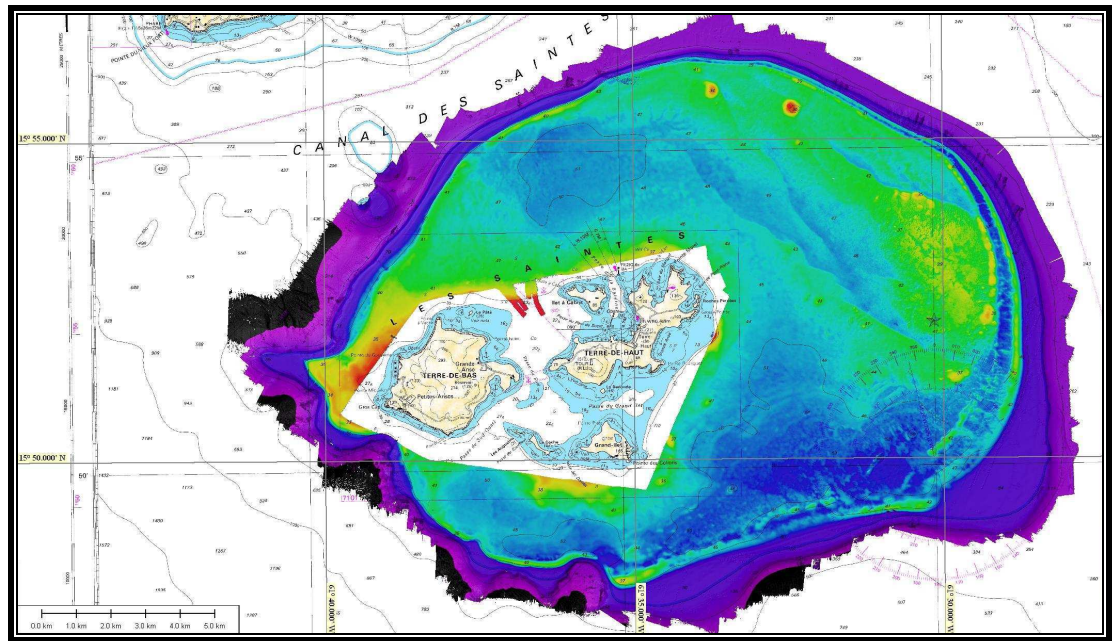
Information of SHOM's involvement in IHO activities is listed in the Annex.

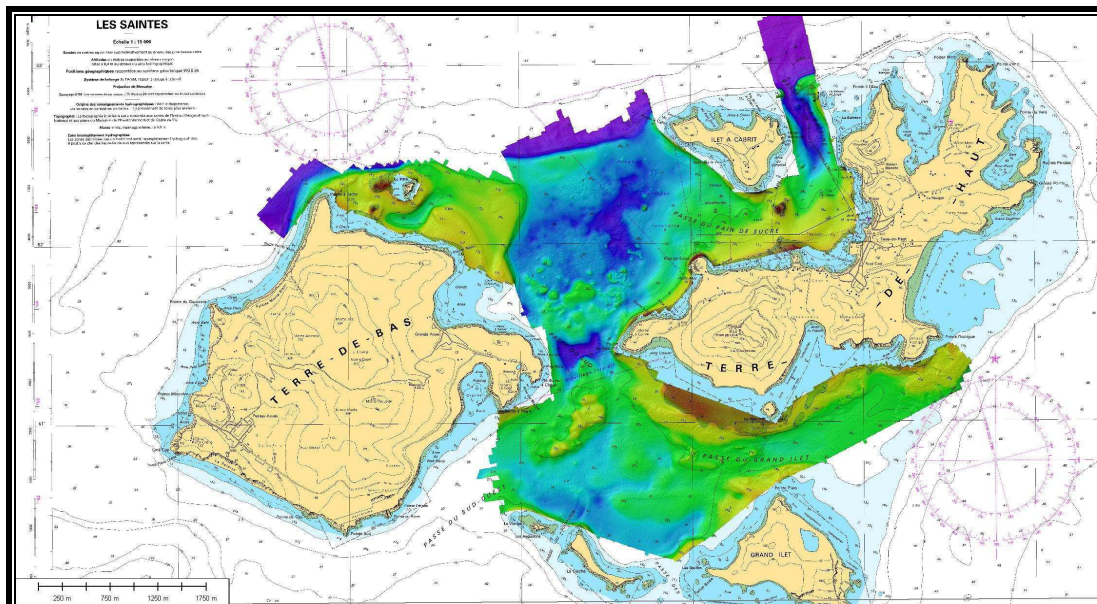
¹<http://www.sgmer.gouv.fr/>

2. Surveys

2.1 Coverage of new surveys

In January and February 2010, the ship *Pourquoi pas?* realised a scientific survey named *Bathysaintes* organised by the *Institut de Physique du Globe de Paris* (IPGP) to study the seismic phenomenon in the region and provide a finer bathymetric surface to develop a model for the propagation of tsunami in the coastal area. She stood ready to intervene in Haiti after the tragic earthquake but was finally not requested to do so by the French authorities.



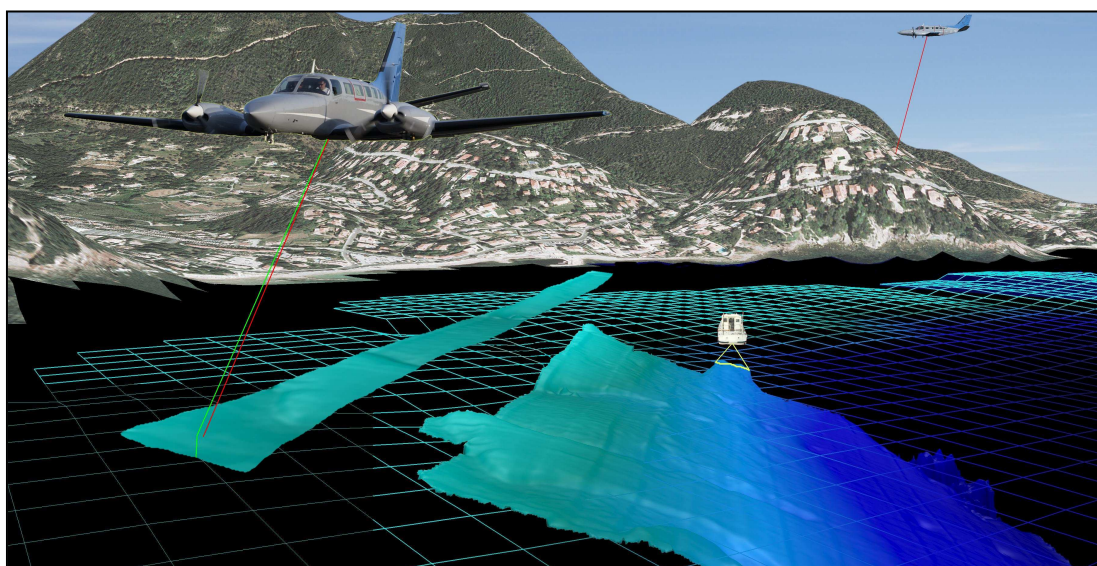


2.2 New technologies and / or equipment

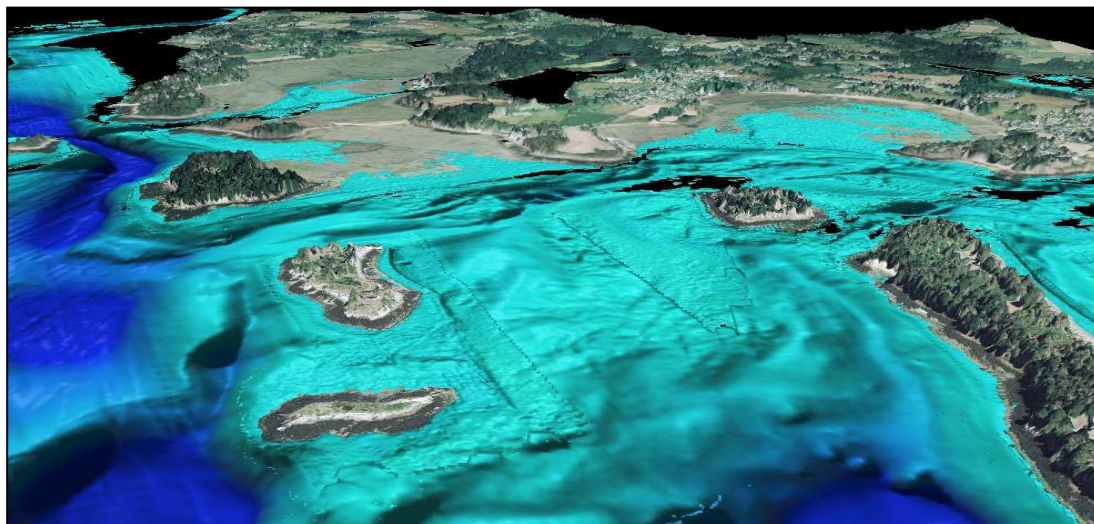
The French National Geographic Institute (IGN) and SHOM were tasked by the Prime Minister to join efforts to produce a seamless, precise topographic and bathymetric model, of the entire French coast.

The Litt₃D[®] project was then created to meet more than hundred requirements expressed by coastal managers concerned with the protection and exploitation of the littoral, and by users of geo-referenced data.

Following is typical Litt₃D[®] survey example:

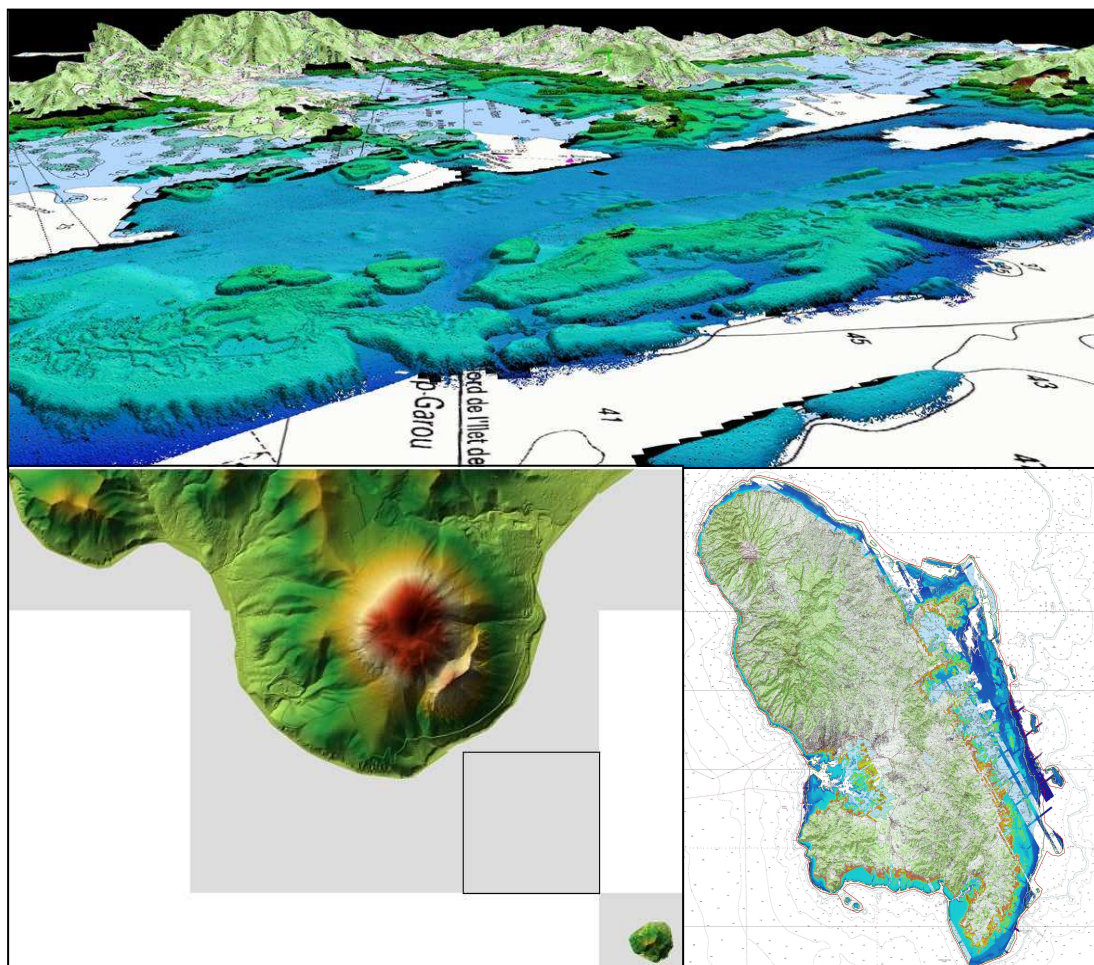


And here is the Litto3D® resulting hydrodynamically integrated seamless product:



This project is now exporting itself to realise surveys around the world. Litto3D® surveys have started in La Martinique and are planned in La Guadeloupe.

Hereunder are the first results of Lidar bathymetry and topographic production in La Martinique:



For more information please contact litto3d@shom.fr

2.3 New ships

NTR.

2.4 Problems encountered

As many other IHO member states, France is tasked with collecting nautical information and surveying areas that would otherwise remain uncharted. It happens from time to time that SHOM only learns by accident of surveys performed by private companies, or even other HOs, in its areas of charting responsibility, and has to insist to obtain communication of IHO-compliant data relevant to INT charts and nautical information.

In the interest of the international maritime community, it is reminded that survey results should be automatically communicated to the IHO recognised charting authority (in compliance with M-3 Resolution 1/1937 – A1.15 § 2 as amended).

In addition, provision should be made in all contracts awarded to private survey companies to the effect that hydrographic data pertinent to the safety of navigation be communicated to the IHO recognised charting authority.

3. Charts and Publications

5.1 Charts

3.1.1 New charts & updates

Produced since the last MACHC conference:

N° National	N° INT	New chart or new edition	Scale 1 :	Title
3127	/	NE	12,500	Abords de Basse-Terre – De la rivière des Pères à la pointe du Vieux Fort (Conversion into WGS84)
5825	/	NE	20,000	Ilot Clipperton (Conversion into WGS84)
6738	/	NE	60,000	La Martinique – Partie Sud (Conversion into WGS84)
6892	/	NE	15,000	Baie de Fort-de-France (Conversion into WGS84)

6948	/	NE	60,000	Guadeloupe – De Pointe-à-Pitre à Marie-Galante – Canal des Saintes (Conversion into WGS84)
7041	/	NE	60,000	La Martinique – Partie Nord (Conversion into WGS84)
7089	/	NE	15,000	Saint-Pierre, Case-Pilote, Cul-de-Sac du Marin, Baie du Vauclin (Conversion into WGS84)
7208	/	NE	60,000	De Marie-Galante à la Désirade (Conversion into WGS84)
7302	/	NE	59,900	De la pointe des Châteaux à l’Ilet à Kahouanne (Conversion into WGS84)
7345	/	NE	149,900	Guadeloupe – De Montserrat à Marie-Galante
7475	/	NE	1,000,000	De Puerto Rico à Trinidad
7482	/	NC	60,000	De l’Ilet à Kahouanne aux Saintes (replaces Nat 3418).
7630	4182	NE	300,000	De Anguilla à la Guadeloupe

Planned in 2011:

N° National	N° INT	New chart or new edition	Scale 1:	Title
7377	/	NE	10,000	Ports du Larivot et de Cayenne

A new chart covering the French Clipperton island will be prepared in 2011. An ENC equivalent cell will be produced later on. This demonstrates the need to continue the work carried out by the MACHC ECC and INT working groups to cover the Pacific ocean in Region B.

3.1.2 ENCs

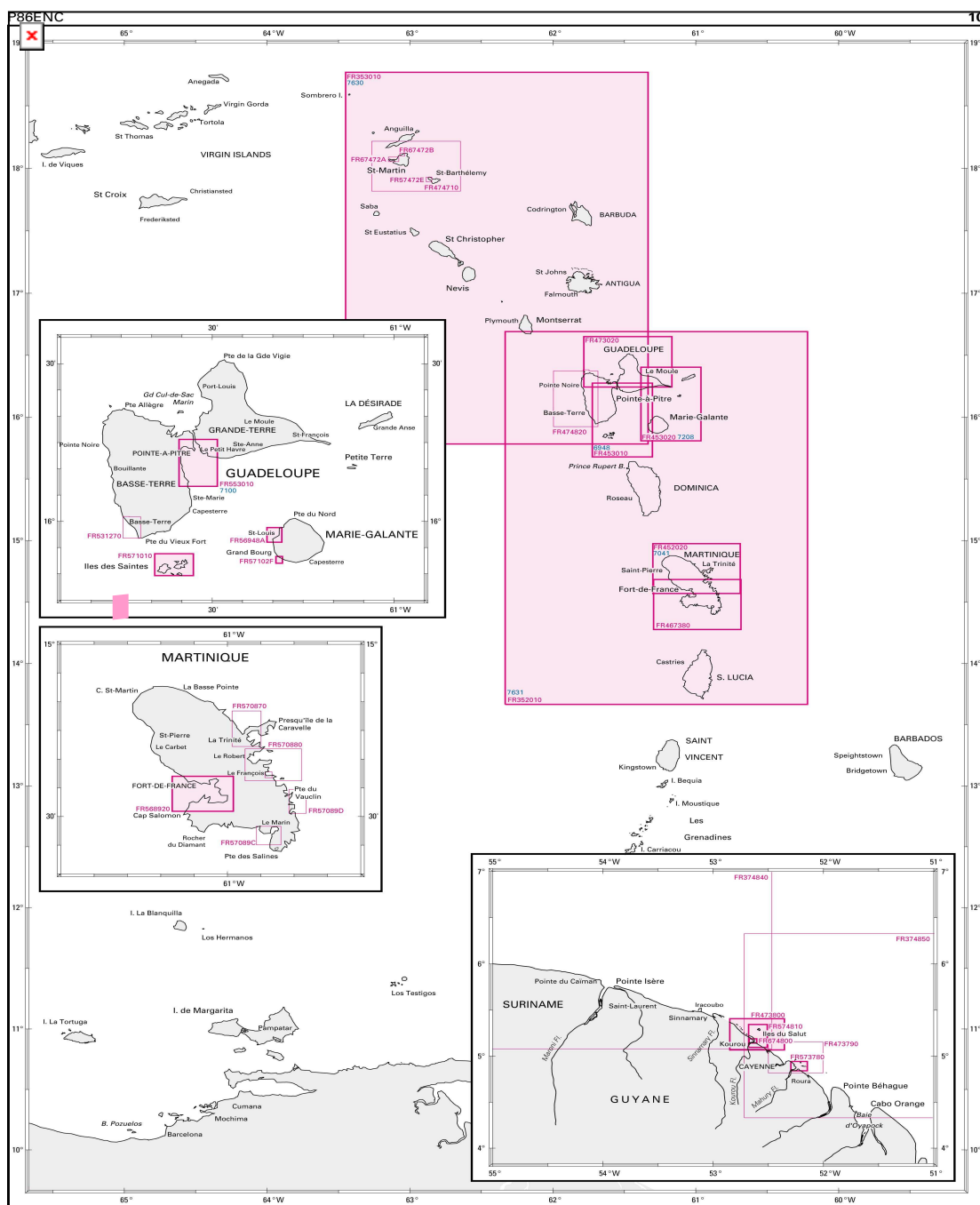
SHOM’s collection of ENCs has now reached the number of 303. The approximate rate of production is of 40 ENCs per year. The full collection should eventually reach a figure around 850 ENCs.

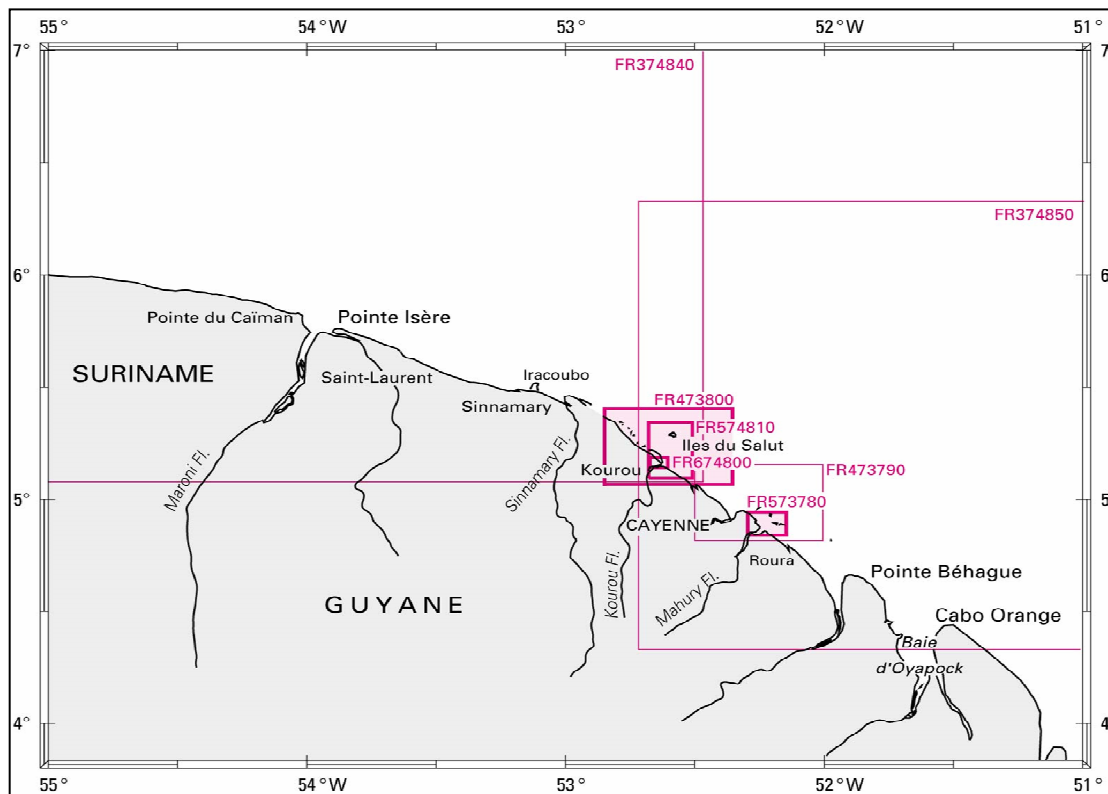
In line with the WEND recommendations and guidelines, France produces its small scale ENC cells as closely as possible to INT chart schemes.

The status of ENC production in the area is:

Usage Band	Produced Cells	Planned Cells	%
1	0	0	N/A
2	2	2	100%
3	2	4	50%
4	6	11	55%
5	9	33	30%
6	1		
Total	20	50	40%

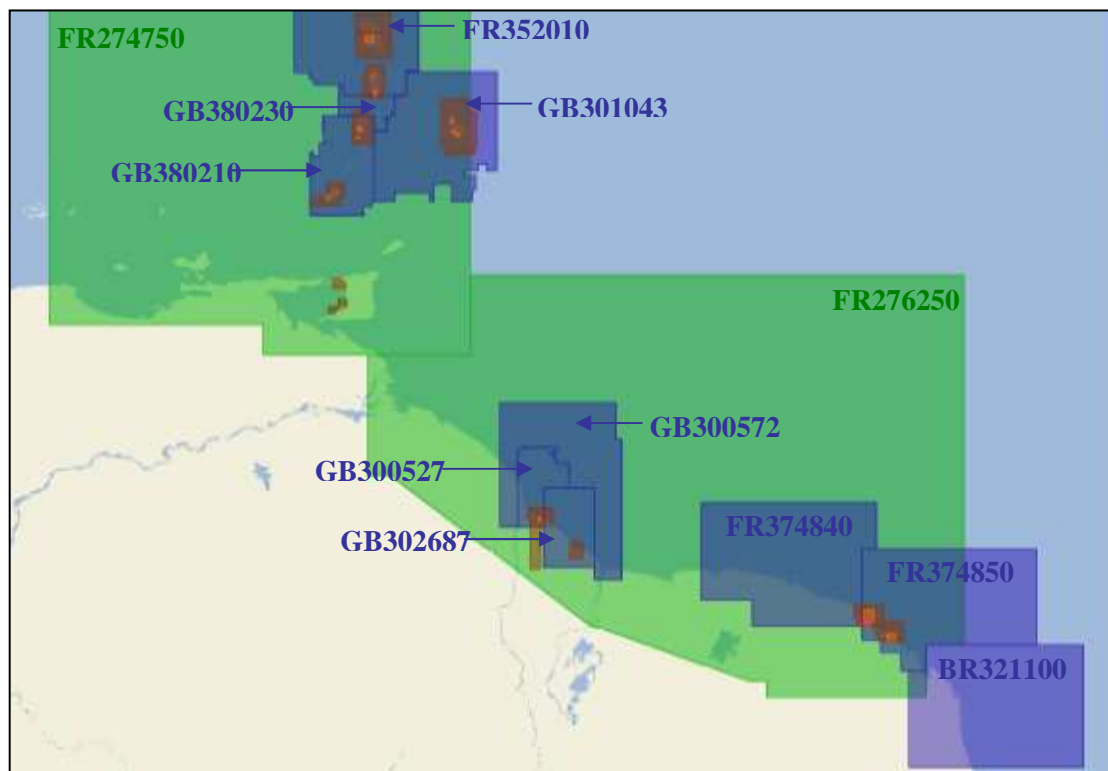
The SHOM ENC coverage of the MACHC area is depicted in the chartlets below, where existing ENCs are represented in dark pink and planned ENCs for 2010-2013 are in light pink:





In particular, ENCs FR474840 and FR474850 have been produced and a new edition of FR274750 has been released.

Following is an extract of the online PRIMAR catalogue <http://www.primar.no> :



It is worth noting that in accordance with the agreement signed between Brazil and France dated 17th September 2010, ENC production principles are based on simple technical charting limits (meridians and parallels) and are not adjusted to maritime boundaries.

3.1.3 RNCs

NTR.

3.1.4 INT Charts

See item 3.1.1

Scale	Produced INT charts	Planned INT charts	%
Small (<1/1 000 000)	0	0	N/A
Medium	5	5	100%
Large (>1/100 000)	National charts already produced	4 (not included in the INT scheme yet)	N/A
Total	5	5 (9 tbc)	100%

3.1.5 National paper charts

See item 3.1.1

3.1.6 Other charts e.g. for pleasure crafts

The charts in the list below are available in a specific format for pleasure crafts.

N° National	N° INT	New chart or new edition	Scale 1 :	Title
6738L	/	NE	60,000	La Martinique – Partie Sud (Conversion into WGS84)
6892L	/	NE	15,000	Baie de Fort-de-France (Conversion into WGS84)
7041L	/	NE	60,000	La Martinique – Partie Nord (Conversion into WGS84)
7089L	/	NE	15,000	Saint-Pierre, Case-Pilote, Cul-de-Sac du Marin, Baie du Vauclin (Conversion into WGS84)

7208L	/	NE	60,000	De Marie-Galante à la Désirade (Conversion into WGS84)
7302L	/	NE	59,900	De la pointe des Châteaux à l'Ilet à Kahouanne (Conversion into WGS84)
7345L	/	NE	149,900	Guadeloupe – De Montserrat à Marie-Galante
7475L	/	NE	1,000,000	De Puerto Rico à Trinidad
7482L	/	NC	60,000	De l'Ilet à Kahouanne aux Saintes (replaces Nat 3418).
7630L	4182	NE	300,000	De Anguilla à la Guadeloupe

3.1.7 ENC Distribution method

All French ENCs are distributed to End User Service Providers by PRIMAR RENC. FR is providing its support to the IC-ENC-PRIMAR Cooperation Committee working groups to develop a RENC-to-RENC cooperation concept.

5.2 Publications

NTR.

4. MSI

Coastal and local warnings in NAVAREA IV are broadcasted by French Navy authorities in Cayenne (Guyana) and Fort-de-France (Martinique) acting by delegation of the national MSI coordinator (SHOM), and using INMARSAT/SAFETY NET (A3 Area) and VHF. The development of websites is expected in the year to come.

5. Capacity Building

5.1 Offer of and/or demand for Capacity Building

France participates in the IHO Capacity Building sub-committee and supports the IHO Regional Hydrographic Commissions of which SHOM is a member. These commissions are the Southern Africa and Islands Hydrographic Commission, the

Eastern Atlantic Hydrographic Commission (EAHC), the South-West Pacific Hydrographic Commission (SWPHC), the Meso-American and Caribbean Sea Hydrographic Commission (MACHC) and the Mediterranean and Black Sea Hydrographic Commission (MBSHC).

In 2010, SHOM liaised with French authorities to explore the ways and means for providing support to Haiti.

5.2 Training received, needed, offered

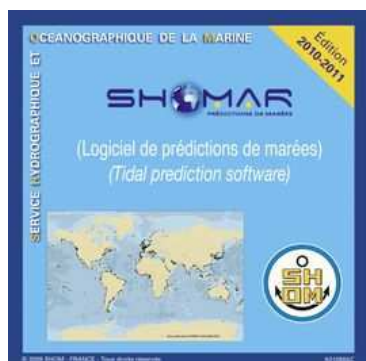
Initial training capabilities provided by SHOM are described in its yearly report available on www.shom.fr. There is nothing to report for the MACHC area.

6. C-55 latest update

The C-55 database for French areas of responsibilities is updated by SHOM on a yearly basis (last update for Region B, 21 May 2010). It is noted that French Guyana C-55 status is reported in Region C1.

Separate entries are now available for France areas in each IHO region. A regular annual updating process has been put in place for periodic updates.

7. Oceanographic activities



In 2010, SHOM released a new edition of the tidal prediction software SHOMAR and now also provides real time services for sea state, sea levels, sea surface currents and associated forecasts and prediction on www.myocean.eu.org.

SHOM also participates in the establishment of a national tsunami warning centre for the North-Eastern and Western Mediterranean sea.

8. Conclusion

SHOM is pleased to participate in the implementation of a consistent, coherent and comprehensive INT and ENC coverage for the main international shipping routes, approaches and harbours in the MACHC region and in this respect. It is now deemed necessary to extend to the Pacific area of Region B, what has been achieved last year for the Atlantic region.

ANNEX

SHOM's participation in IHO Regional Hydrographic Commissions, Committees, Sub-Committees & Working Groups:

Name	Chair Vice chair	Member	Observations
LAWG		✓	Legal Advisory Working Group
FC	✓	✓	Vice-chairman of Finance Committee
HSSC		✓	Hydrographic Services and Standards Committee, formerly known as the Committee on Hydrographic Requirements for Information Systems (CHRIS)
TSMAD	✓	✓	Transfer Standard Maintenance and Application Development
DPSWG		✓	Data Protection Scheme Working Group
DIPWG		✓	Digital Information Portrayal Working Group, former CSMWH
SNPWG		✓	Standardisation of Nautical Publications Working Group
CSPCWG		✓	Chart Standardisation and Paper Chart Working Group
DQWG		✓	Data Quality Working Group -Last meeting in 1996
MSDIWG		✓	Marine Spatial Data Infrastructure Working Group
TWLWG	✓	✓	Tidal and Water Level Working Group
HDWG		✓	Hydrographic Dictionary Working Group
EUWG	✓	✓	ENC Updating Working Group
IRCC	✓	✓	SHOM director general has been elected first chairman of the Inter Regional Coordination Committee at the 4 th Extraordinary IH Conference
NSHC		✓	North Sea Hydrographic Commission
MBSHC		✓	Mediterranean and Black Seas Hydrographic Commission

EAtHC		✓	Eastern Atlantic Hydrographic Commission
SWPHC	✓	✓	South-West Pacific Hydrographic Commission
MACHC		✓	MESO American & Caribbean Sea Hydrographic Commission
SAIHC		✓	7 th Conference of Southern Africa and Islands Hydrographic Commission to be held in the French Department of la Réunion
NIOHC		✓	North Indian Ocean Hydrographic Commission
HCA		✓	Hydrographic Commission on Antarctica
WWNWS		✓	World-wide Navigational Warning Service Sub-Committee, formerly known as the Promulgation of Radio Navigational Warnings Sub-Committee (PRNW)
CBSC		✓	Capacity Building Sub-Committee
GEBCO		✓	Joint IOC-IHO Guiding Committee for the General Bathymetric Chart of Oceans (GEBCO)