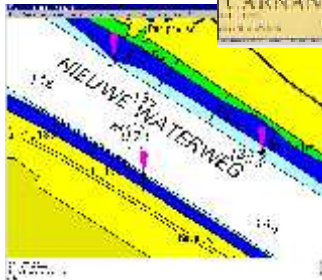
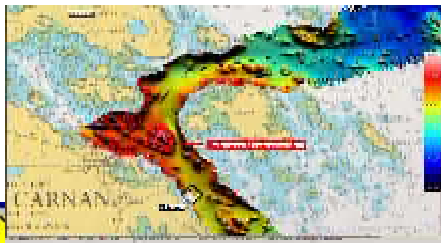
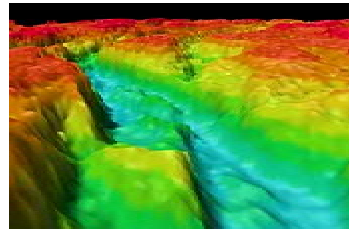
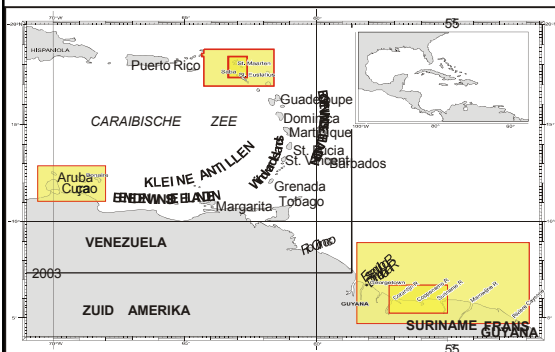




Royal Netherlands Navy

National report MACHC 12

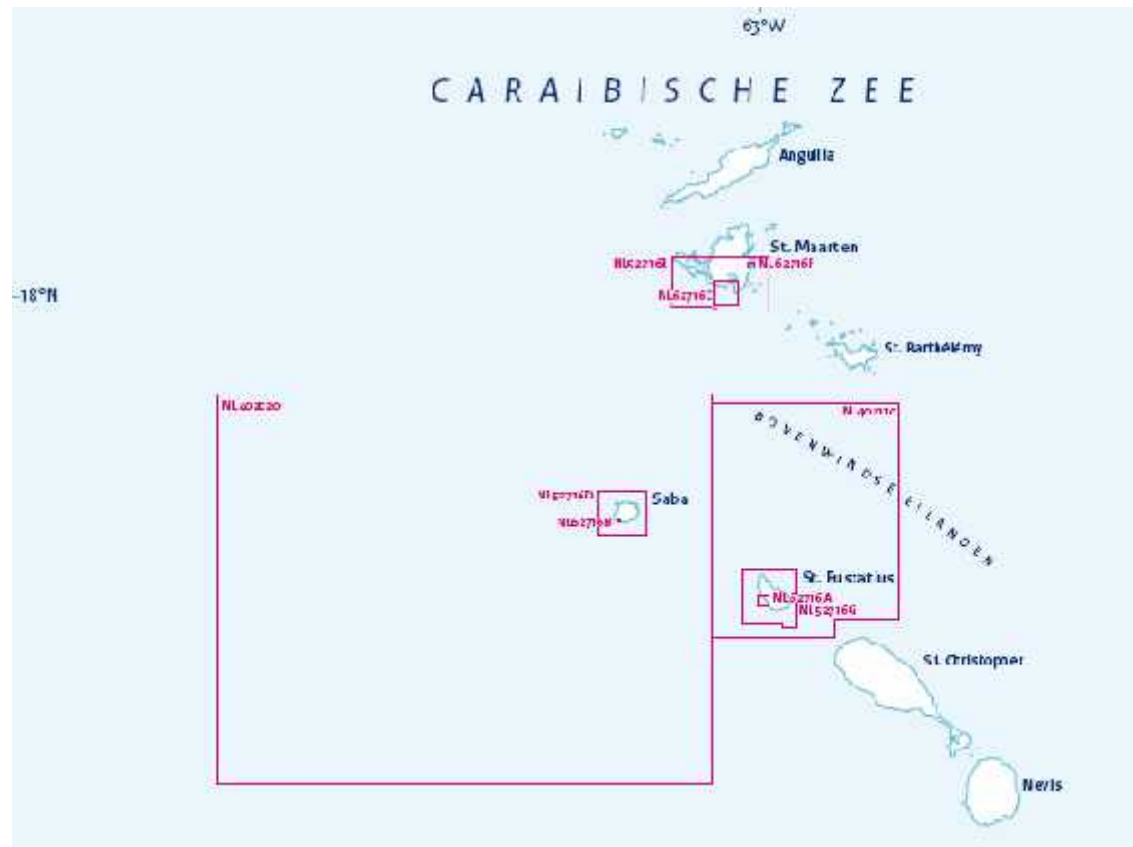




Highlights: coverage (1)

ENC coverage

- Windward Islands complete coverage all usage bands



Highlights: coverage (2)



ENC coverage

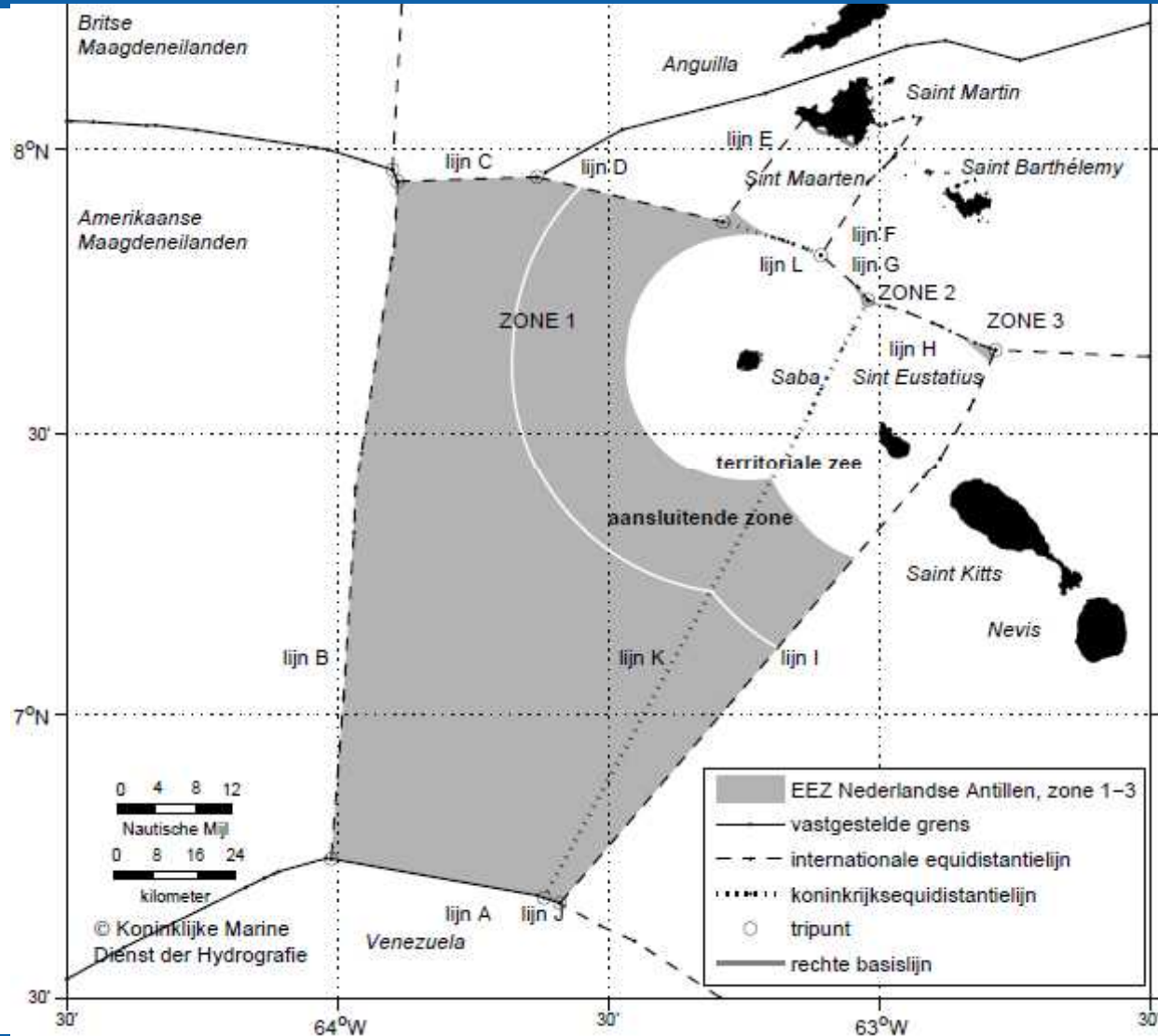
- Leeward Islands: coastal and general usage in progress
 - > Cooperation with Venezuela, completion March 2012





Maritime Borders (1)

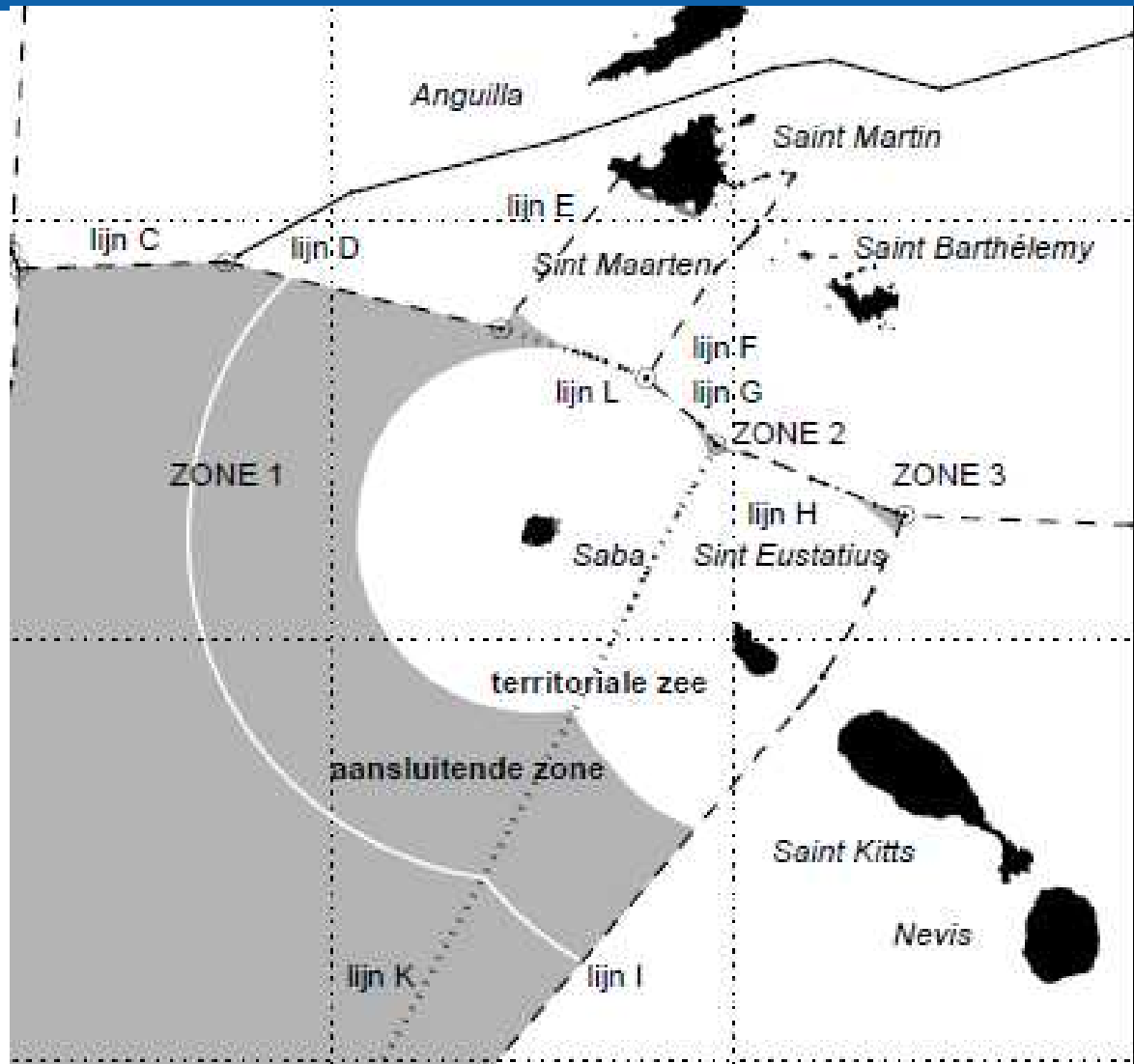
UNCLOS





Maritime Borders (2)

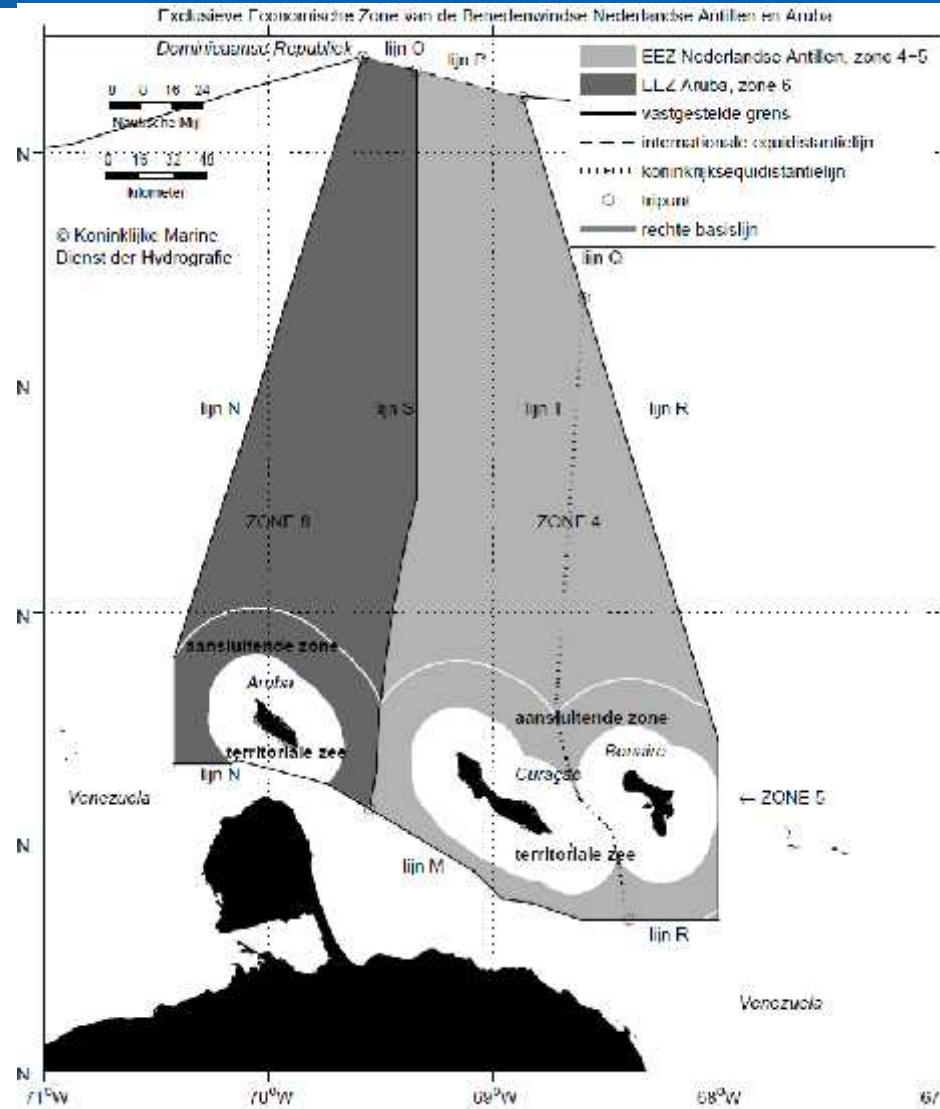
UNCLOS





Maritime Borders (3)

UNCLOS





Capacity building (1)

Offering

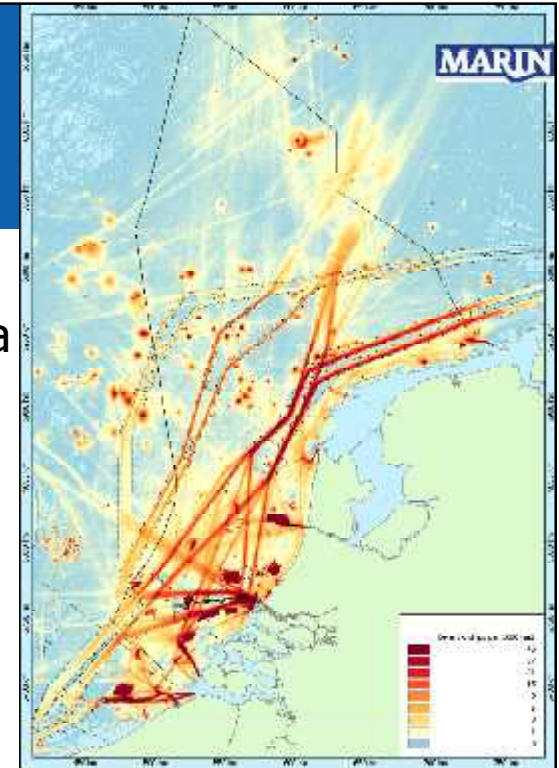
- Practical traineeship on board
- Practical support with deployable teams:
 - knowledge
 - equipment MBES, postprocessing
 - local tug boats as platform
- Practical traineeship at the office
- Coproduction program Suriname in nautical charting and hydrography



Room for improvement



- Risk based resurvey strategy similar to EU North Sea
- Shipping analyses based on AIS monitoring
- Changed constitution of the 6 Islands:
 - from unwritten law to Act on Hydrography
 - closer look at additional needs and developments
 - need for Netherlands Caribbean geo portal





Pressing issues

- Emphasis on formalised technical cooperation (bilaterals):
 - next steps in close cooperation with Venezuela early 2012
 - especially exchange of validated source data i.s.o. products
- Lack of 'level playing field' w.r.t. availability of ENC's:
 - competition between End User Service Providers on quantitative ENC availability i.s.o. value added services
- Substantial budget cuts Navy and need for additional financing by the maritime community and stakeholders (15 – 30 %)



