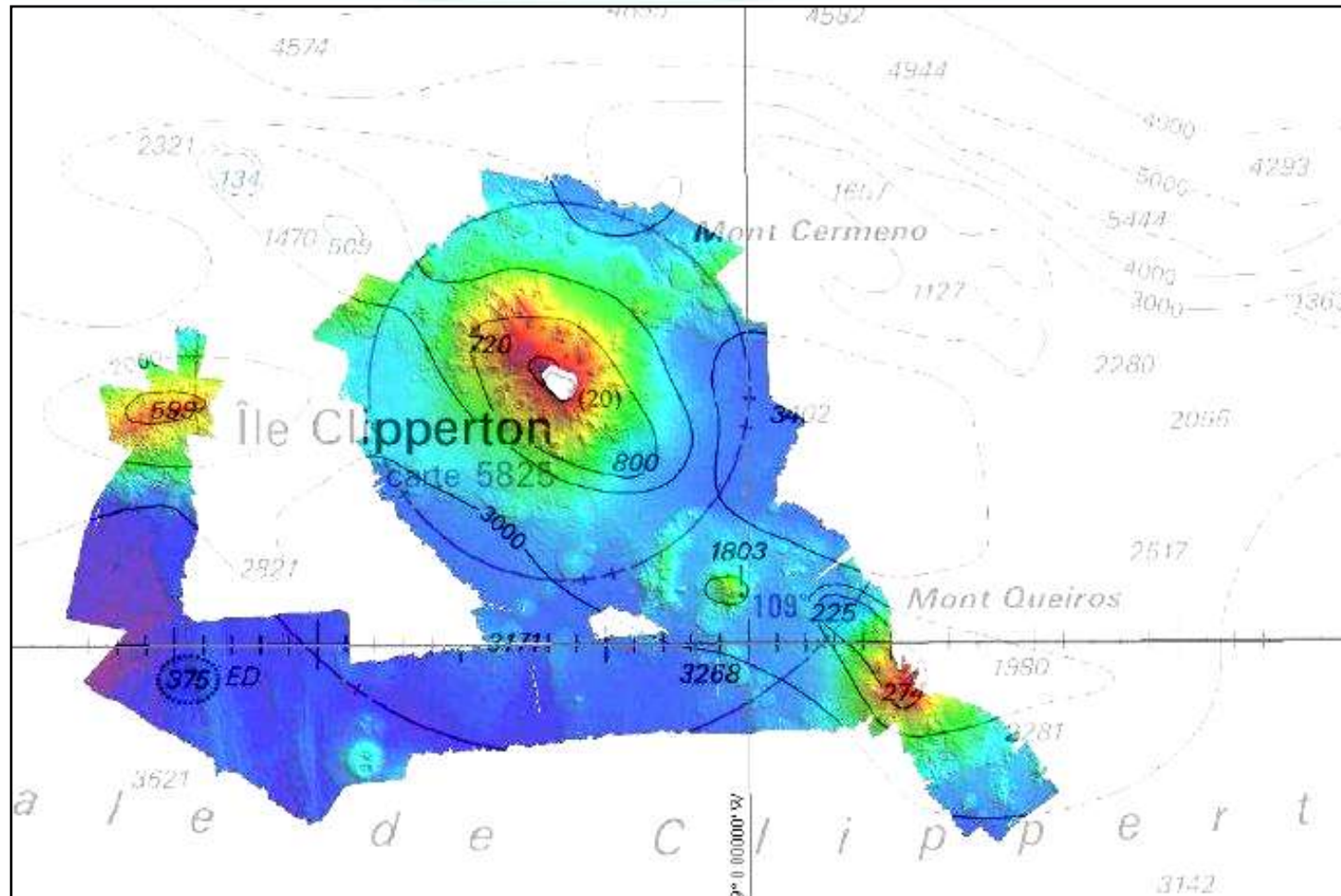


New survey coverage



→ 2013: Deployment of a survey ship scheduled for 2nd semester.

Paper Chart Production

→ *Produced since the last conference:*

National	INT	Scale 1 :	Title
7751	/	1 570 000	Île Clipperton – EEZ (<i>new chart</i>)

→ *Planned for 2013:*

National	INT	Scale 1 :	Title
7378	/	15 000	Accès au Dégrad des Cannes (<i>new edition</i>)

ENC Production

Usage Band	Produced Cells	Planned Cells	%
1	0	0	N/A
2	2	3	66%
3	4	4	100%
4	8	11	73%
5	9	33	33%
6	2		
Total	25	51	49%

➔ *No ENC were produced in the region since the last conference.*

➔ *SHOM's collection of ENCs = 367 cells.*

Planned ENC's

Number	Scale 1:	Title	Comment
FR374840	300 000	De Paramaribo aux Iles du Salut	French cell cut to clip with the new expected cell SR302014.
FR277510	1 570 000	Ile Clipperton*	End of 2012.

** Listed as S-11 Region B cell, but also within C-55 Region A area.*

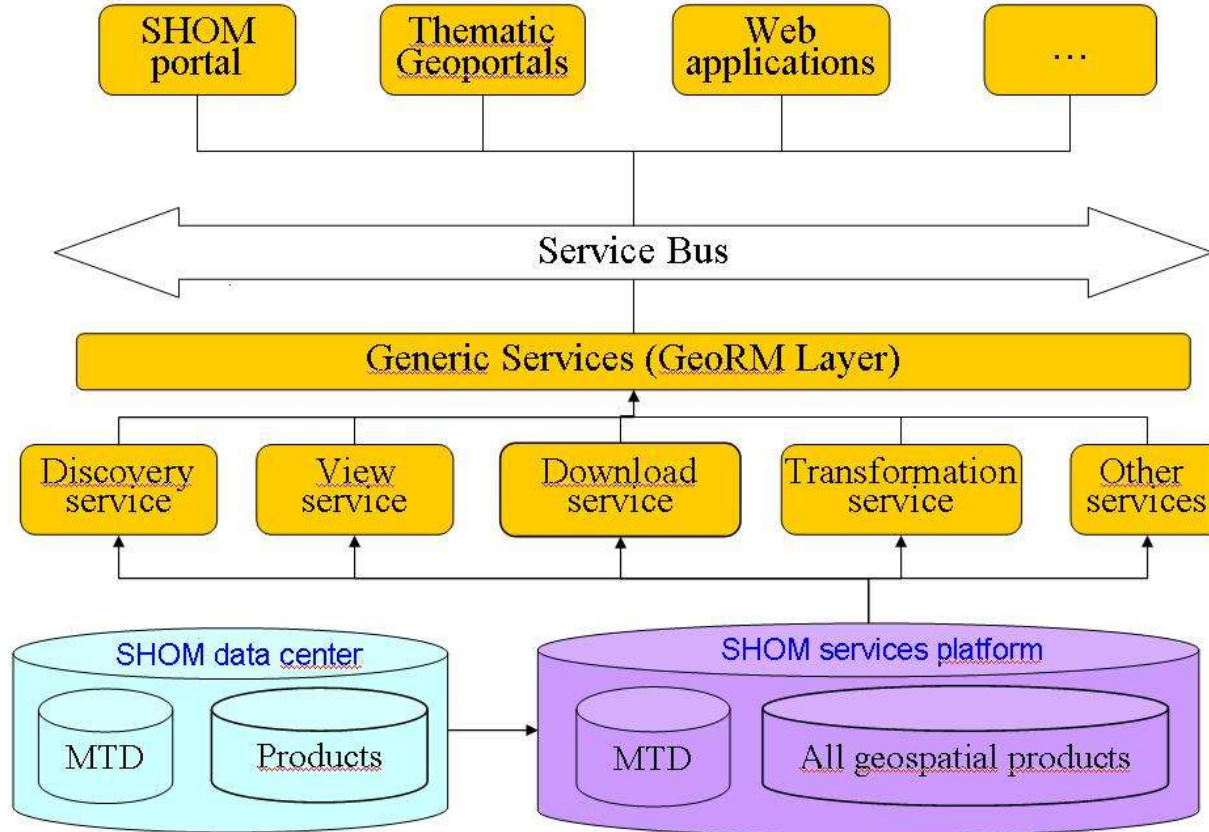
→ @ Proposal: include Clipperton Island in C-55 Region B area.

Maritime Safety Information

Urgent safety-related nautical information must be transmitted to the NAVAREA co-ordinator *in the first place*, then, if appropriate, to the primary charting authority of the area.

→ *Several surprising cases were raised within French water areas .*

MSDI : INFRAGEOS project



- ➔ SHOM products metadata can be browsed at www.geocatalogue.fr
- ➔ SHOM view services are available at <http://data.shom.fr>

All these services are described on SHOM website
<http://www.shom.fr/les-services-en-ligne/services-inspire>

SHOM tide gauge network

<http://refmar.shom.fr>

