



NATIONAL GEOSPATIAL-INTELLIGENCE AGENCY

Know the Earth... Show the Way... Understand the World

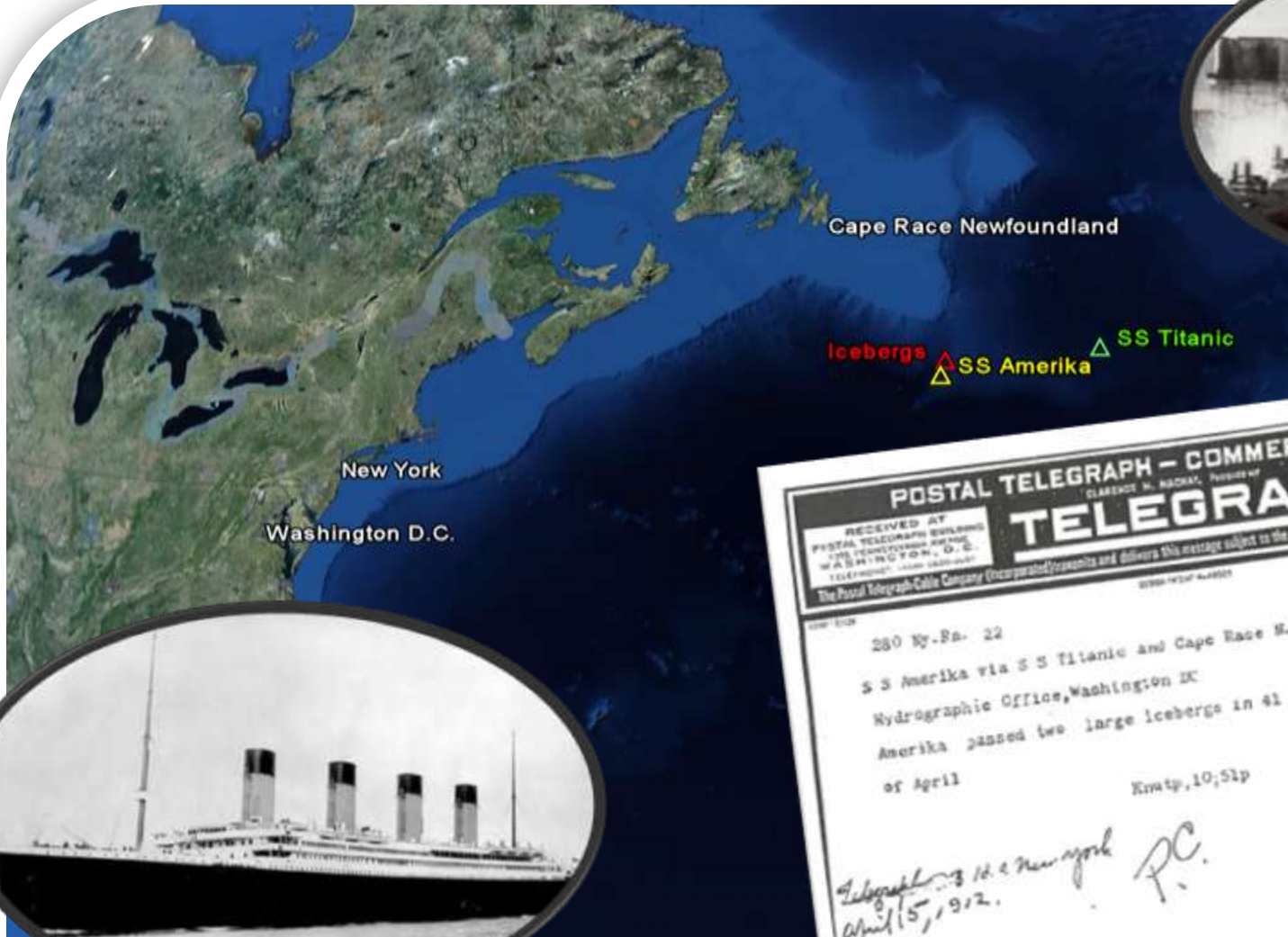
Maritime Watch

Coordinated global service notifying users by satellite broadcast of immediate hazards that might endanger the safety of life at sea





April 14-15, 1912



POSTAL TELEGRAPH - COMMERCIAL CABLES
CLARENCE M. NACAL, President
TELEGRAM RECOVERY NO. 795

RECEIVED AT
POSTAL TELEGRAPH BUILDING
1775 PENNSYLVANIA AVENUE
WASHINGTON, D. C.
TELEPHONE 1-800-368-6868

The Postal Telegraph-Cable Company (Incorporated) transmits and delivers this message subject to the terms and conditions printed on the back of this blank.

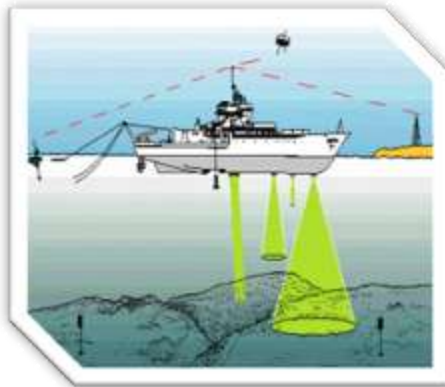
280 Ny.-Pa. 22
SS Amerika via SS Titanic and Cape Race N.F. April, 14, 1912
Hydrographic Office, Washington DC
Amerika passed two large icebergs in 41 27 N 50 8 W on the 14th
of April
Knots, 10; 51p

62496 HYDRO. OFFICE
filed with 2-993-5 Rec'd APR 15 1912
Enclosures
Mm

*Telegram to New York
April 15, 1912. P.C.*



Hazards

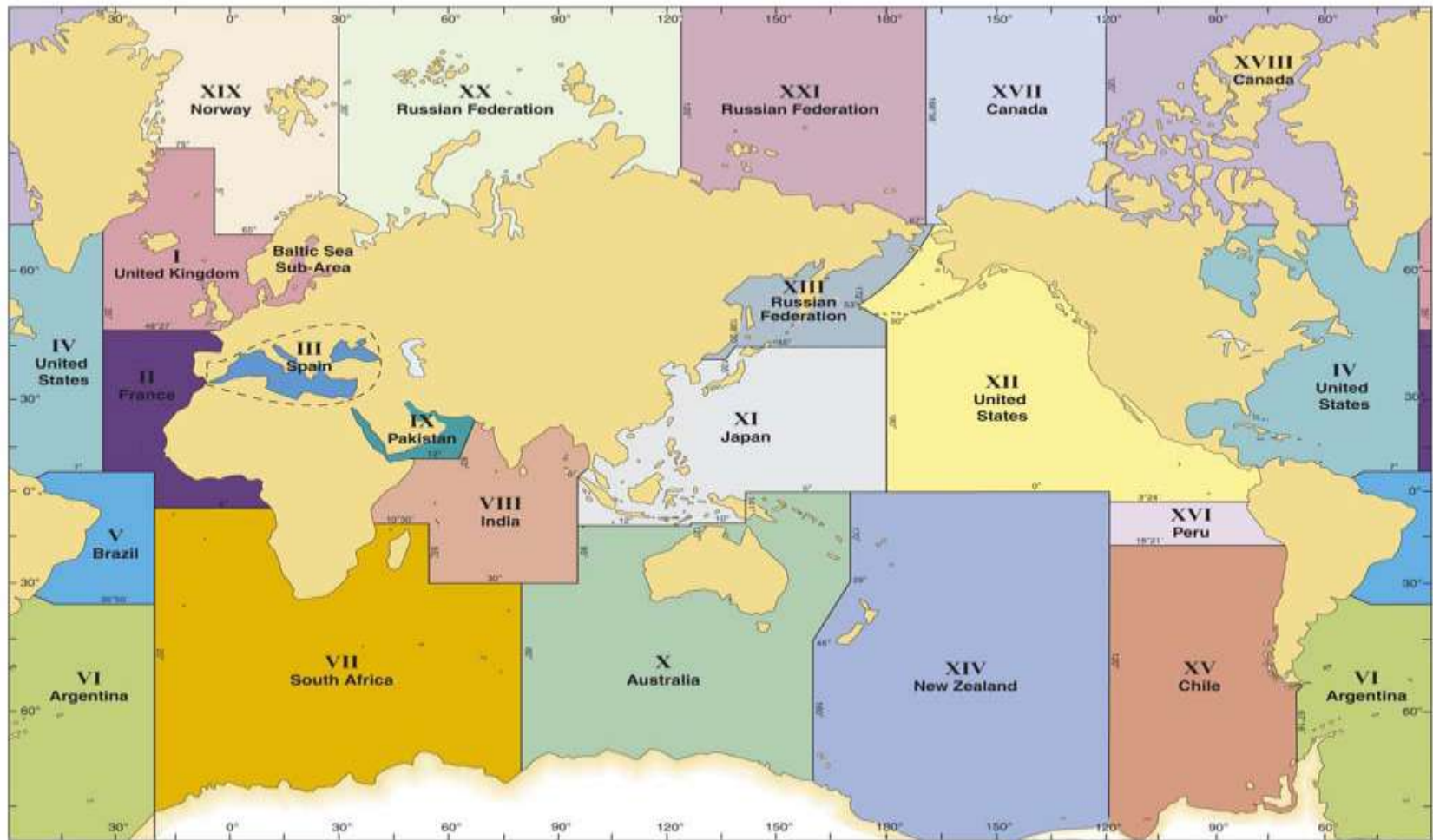




World-Wide Navigational Warning Service



NAVAREAs





NATIONAL GEOSPATIAL-INTELLIGENCE AGENCY

Know the Earth... Show the Way... Understand the World



navsafety@nga.mil

Data SIO, NOAA, U.S. Navy, NGA, GEBCO
US Dept of State Geographer

©2010 Google

© 2012 MapLink/Tele Atlas

11°56'19.06" N 82°20'29.77" W elev 0 ft

Eye alt 3006.73 mi

Imagery Date: Jan 1, 1970



Guatemala Earthquake Warning

NAVAREA XII 295/2012 (GEN)

(Cancelled by NAVAREA XII 295/2012)

EASTERN NORTH PACIFIC.

GUATEMALA.

TSUNAMI WARNING.

AN EARTHQUAKE OCCURRED AT 071636Z NOV WITH A PRELIMINARY MAGNITUDE OF 7.4 VICINITY 14-06N 091-54W. A TSUNAMI HAS BEEN GENERATED WHICH COULD CAUSE DAMAGE TO COASTS AND ISLANDS IN THE PACIFIC AREA.

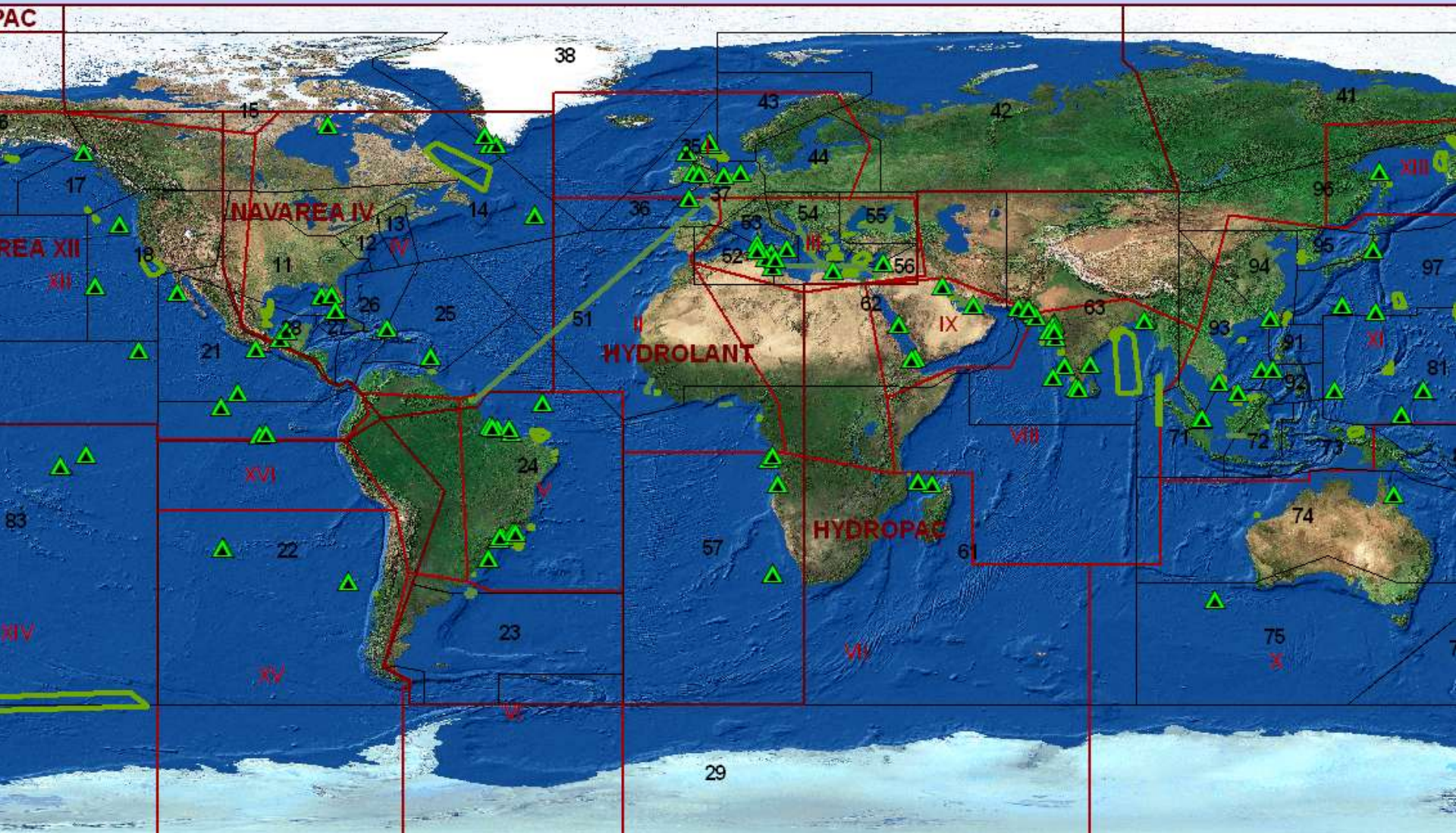
TSUNAMI WAVE HEIGHTS CANNOT BE PREDICTED AND MAY BE A SERIES OF WAVES WHICH COULD BE DANGEROUS FOR SEVERAL HOURS AFTER THE INITIAL WAVE ARRIVAL.

(071914Z NOV 2012)

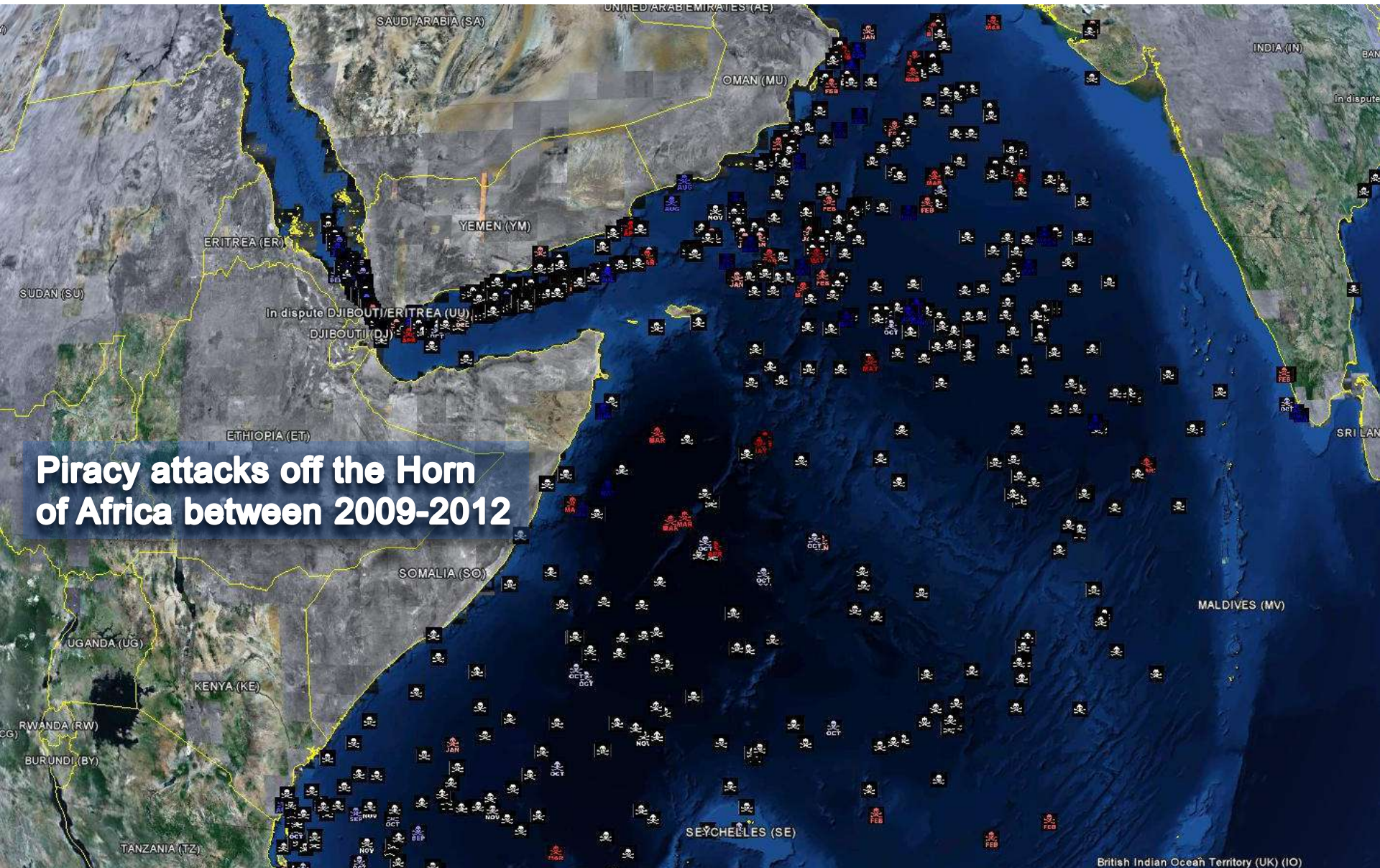


NATIONAL GEOSPATIAL-INTELLIGENCE AGENCY

Know the Earth... Show the Way... Understand the World



 = Maritime Warnings currently in force



Piracy attacks off the Horn of Africa between 2009-2012



Maritime Safety Office

Global Coverage

Surface Navigation



Maritime Watch (24/7) World Wide Navigational Warning Service (WWNWS)



Subsurface Navigation



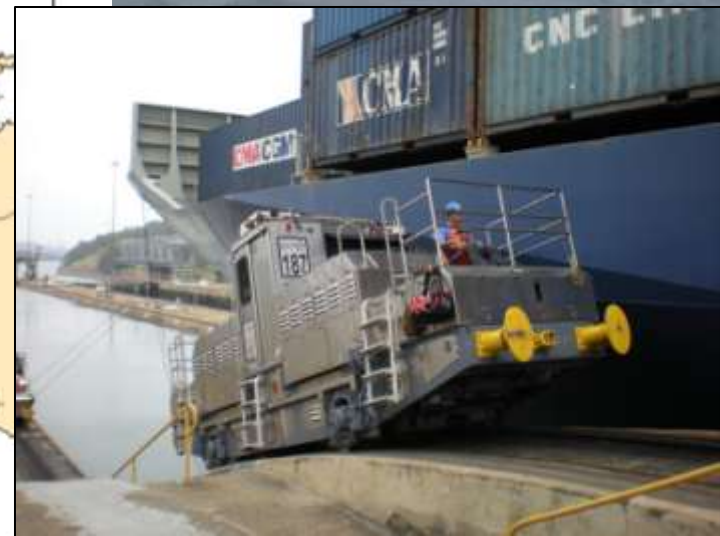
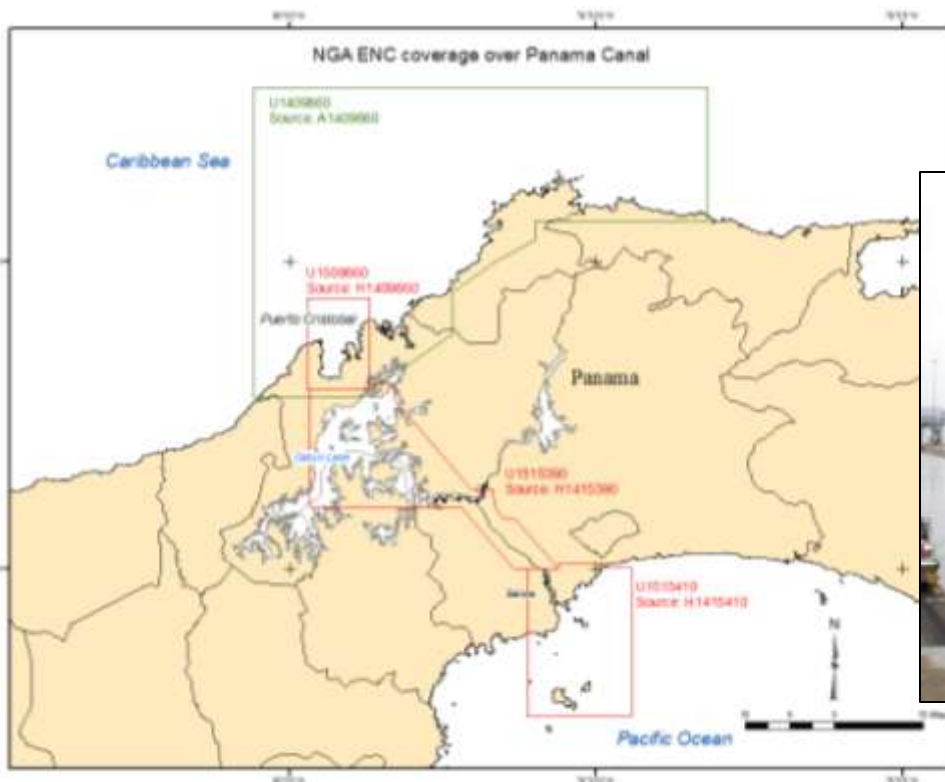
Additional Coverage:

Ocean Tide Prediction, Crisis Response,
Littoral, Riverine and Maritime Mission Specific Products



Panama ENC

- NGA is producing its first ENC (S-57) Cells.
- A total of Four new ENC Cells will be produced covering the Panama Canal.





NATIONAL GEOSPATIAL-INTELLIGENCE AGENCY

Know the Earth... Show the Way... Understand the World