

MACHC December 2013

**Regional ENC Co-ordinating
Centres**

ic-enc

Mr. James Harper, IC-ENC General Manager

Contents

- RENCs
- IC-ENC services
 - ENC Production Support for HOs
 - ENC Validation
 - ENC Distribution
- IC-ENC Operations
- IC-ENC MACHC Workshop – an invitation

What does a RENC do?

Assists HOs with...**production, quality assurance**
and **distribution** ...of ENCs.

The four Cs...

- ...Co-ordination
- ...Co-operation
- ...Collaboration
- ...Conversation

MACHC14 is a mixed audience...

RENC Organisations



ic-enc

- The International Centre for ENC's
- Headquarters is based in United Kingdom, regional office in Australia
- Future offices...



- PRIMAR is based in Norway, hosted by NHS

IC-ENC and PRIMAR combined, **39** IHO member states are members of a RENC

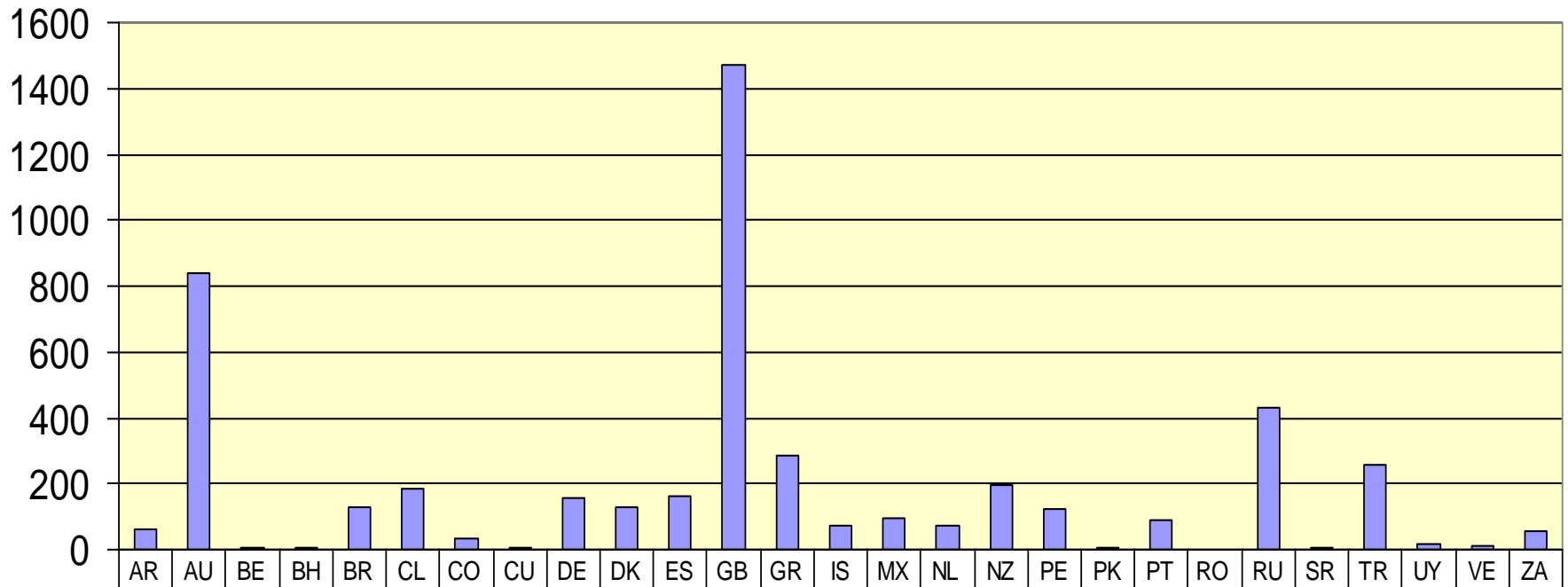
IC-ENC Member HOs (28)



MACHC Members: Brazil, Columbia, Cuba, Mexico, Netherlands, UK, Venezuela
Neighbouring: Argentina, Chile, Ecuador, Peru

IC-ENC Members' ENC's

4897 Cells Available Week 49/2013



EN Cell Totals	60	838	7	4	129	185	36	8	154	130	164	1471	285	70	96	71	197	122	5	89	1	430	4	258	16	11	56
----------------	----	-----	---	---	-----	-----	----	---	-----	-----	-----	------	-----	----	----	----	-----	-----	---	----	---	-----	---	-----	----	----	----

IC-ENC Production Support services

Technical visits to HO

HO works alongside IC-ENC validation team in UK or Australia

Advice - production systems and flow lines, specific encoding issues

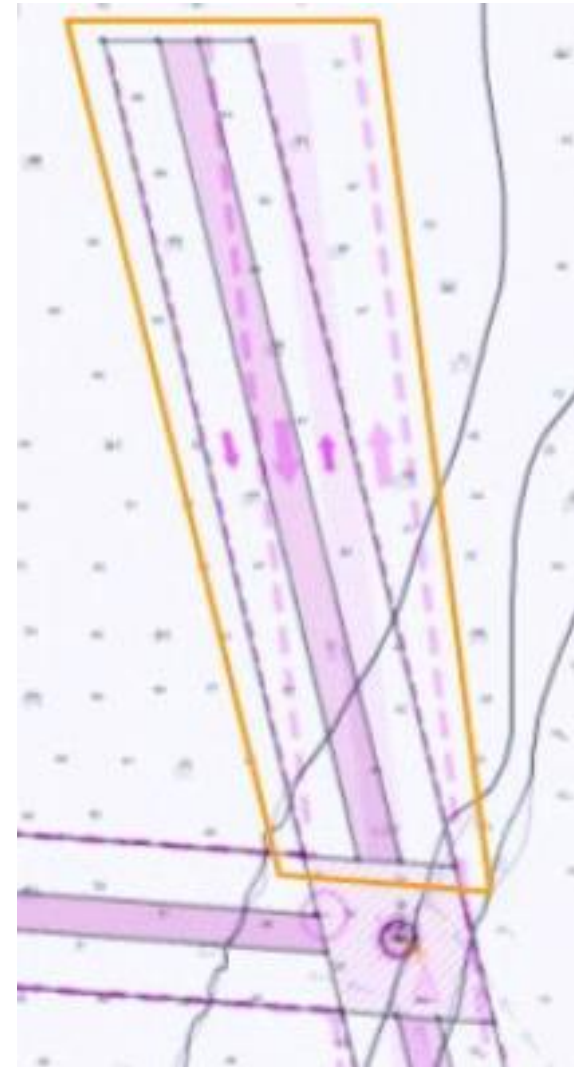
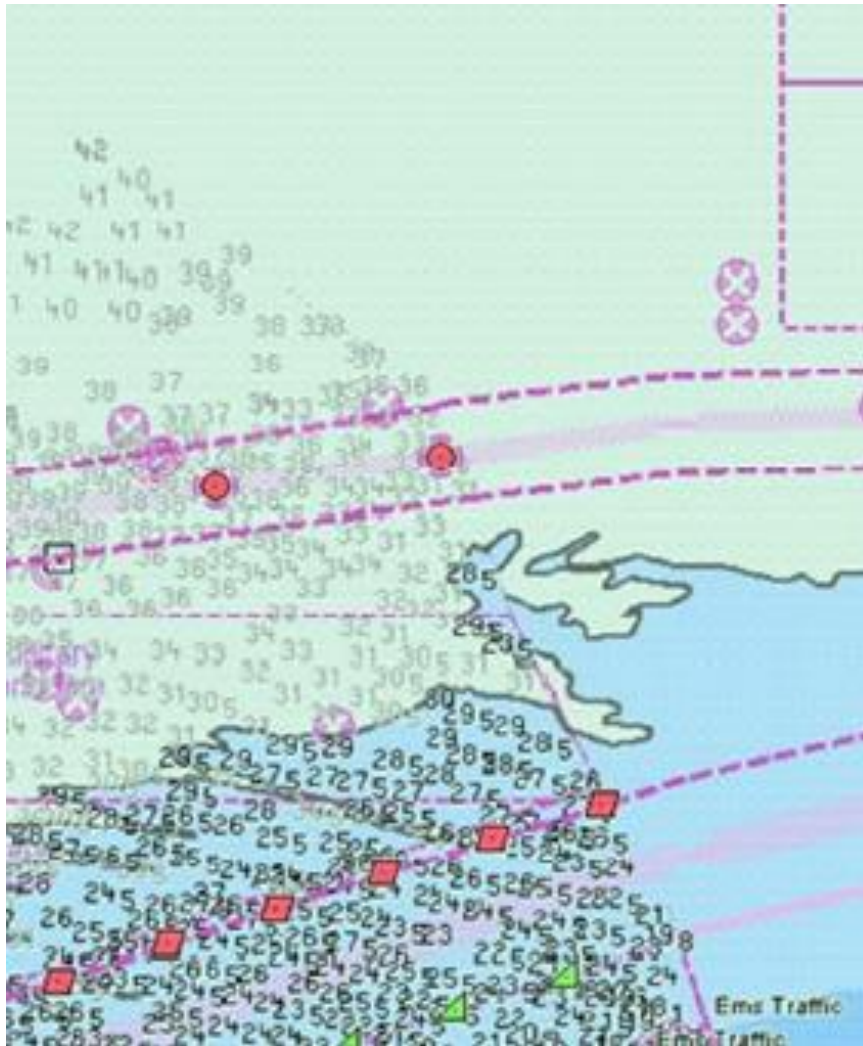
Technical Experts Working Group – share best practice

Internal validation – IC-ENC Errors Database

IC-ENC Errors Database

DETAILED ERROR INFORMATION	
Source:	dKart Inspector (V6.0.0.6)
Error Name:	LG0151: (T0061)
Explanation:	An object captured within an intertidal (-h to 0) or land area has been attributed with WATLEV = 3 (always underwater/submerged).
User Impact:	<p>It is illogical to have a submerged object shown within an intertidal area or on land, but the impact on the user is minimal because the shoaler object will take precedence when setting safety margins in the ECDIS. However, this error message may be categorised as 'HO to correct' rather than 'Accept' because, should the mariner interrogate the object, there may be confusion and/or a loss of confidence in the product if this issue is seen.</p> <p>This error may also be reported erroneously for an object which has been captured entirely within a depth area attributed with DRVAL1 > 0, but which is adjacent to intertidal or land area.</p>
Description:	<p>HO TO CORRECT: If an object attributed with WATLEV = 3 overlaps an intertidal area or LNDARE and EXPSOU is incorrectly encoded.</p> <p>ACCEPT: If the object in question is a linear SLCONS object which shares the same geometry as a LNDARE object. (This object class is included with the software test).</p> <p>ERRONEOUS: If it is a linear LNDARE object. (The test was amended in SP1 of dKart Inspector 5.0 so that it no longer reports point LNDAREs, but linear LNDAREs are still reported erroneously).</p> <p>Or</p> <p>The object is located entirely within a depth area attributed with DRVAL1 > 0.</p> <p>Or</p> <p>The object is attributed with EXPSOU = 3 (Deeper than...).</p>
Required Action:	In order to provide the mariner with the best possible product please correct the WATLEV attribute of the object in question. If, on review, it is found that the object genuinely is submerged on an intertidal or land area, then the attribute EXPSOU should be attributed with "3 - Deeper than..." to confirm this situation to the mariner.
References:	Logical consistency 558 Check 61

IC-ENC Validation



ENC Distribution

Value Added Resellers



IC-ENC Operations



Strategic direction is set by the Steering Committee; all members are invited to participate in this group.

Technical and Commercial working groups made up of IC-ENC staff and member HOs.

Not-for-profit organisation

Annual budget reviewed and approved by Steering Committee

HO sets its own price for its ENCs, IC-ENC retains **\$1** for each ENC sold, remainder is returned to the HO

IC-ENC MACHC Workshop – an invitation

- Interested in learning more?
- Both for existing members as well as prospective new HOs
- MACHC Agenda; 15.45 this afternoon
- Are there any questions now?