



United Kingdom
Hydrographic Office

UK National Report

15th Meso American and Caribbean Sea Hydrographic
Commission, Mexico, 10-13 December 2014





United Kingdom
Hydrographic Office

Building on Success

UK activity 2013-14

- Hydrographic Surveys
- Chart production
- ENC Production
- Product Development
- New Products

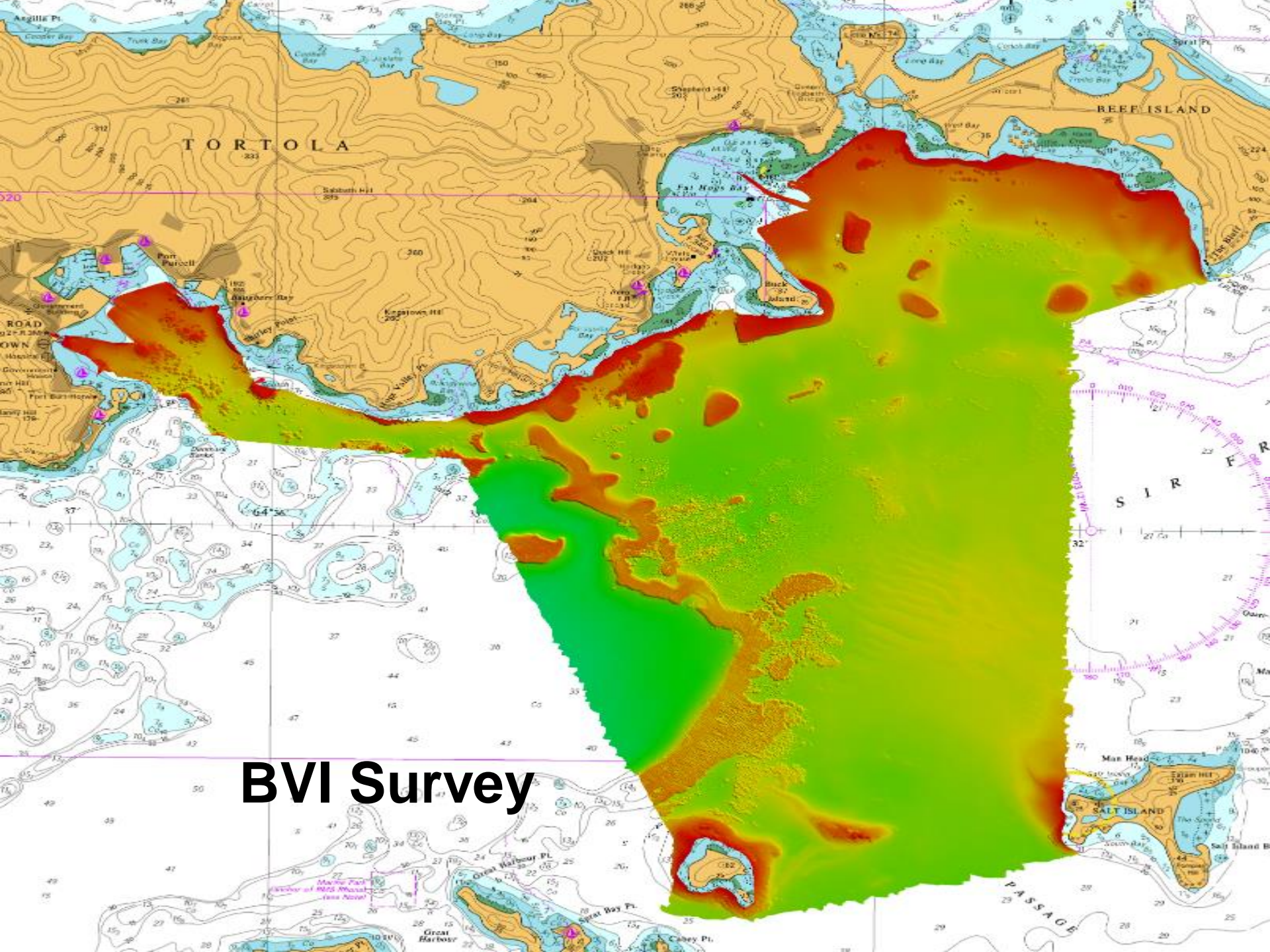


United Kingdom
Hydrographic Office

Hydrographic Surveys

Survey in the British Virgin Islands of Southern Tortola: a collaborative project between...

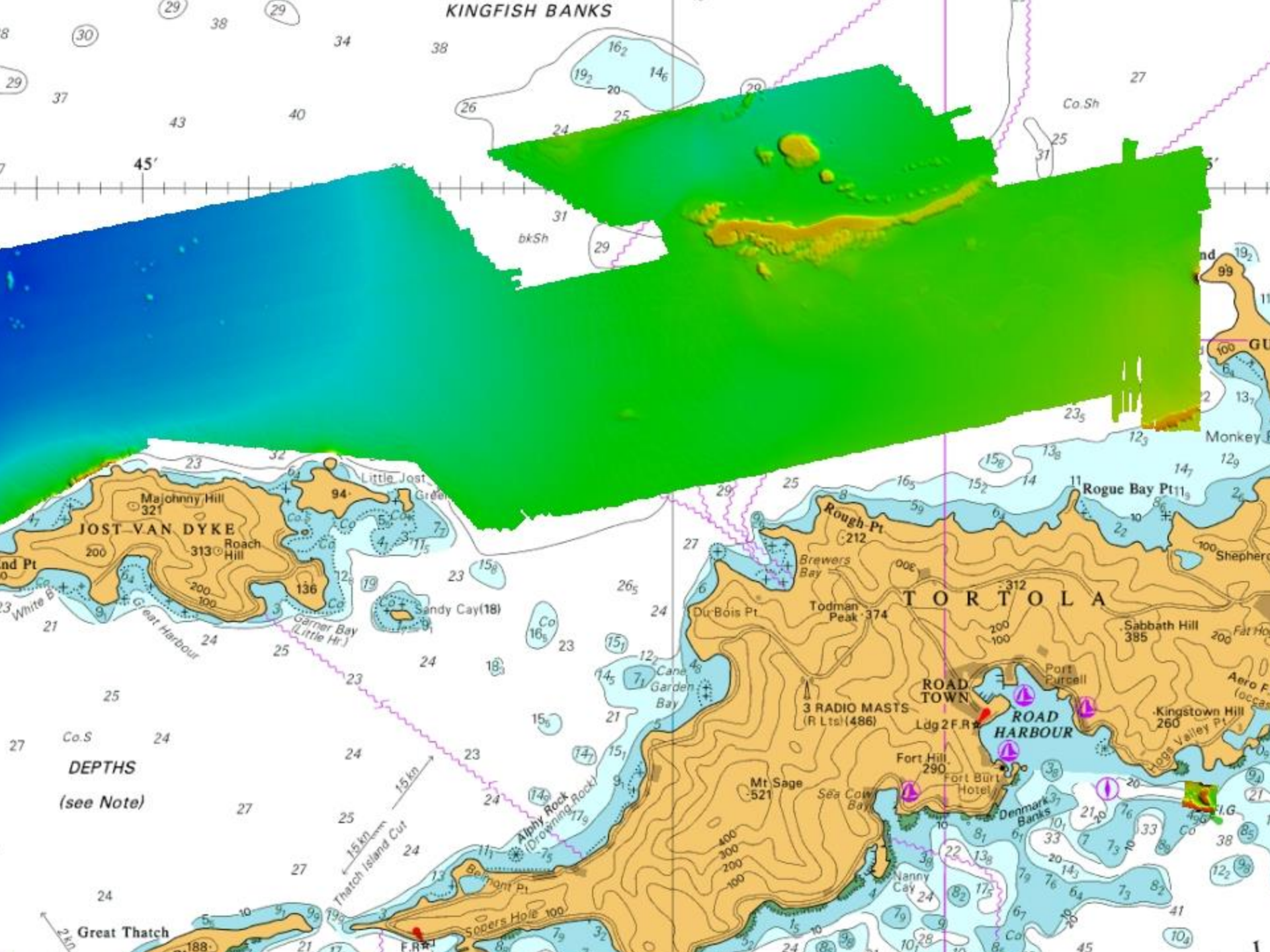
- BVI National Parks Authority
- UK Centre for Environment, Fisheries and Aquaculture Science (CEFAS)
- UKHO



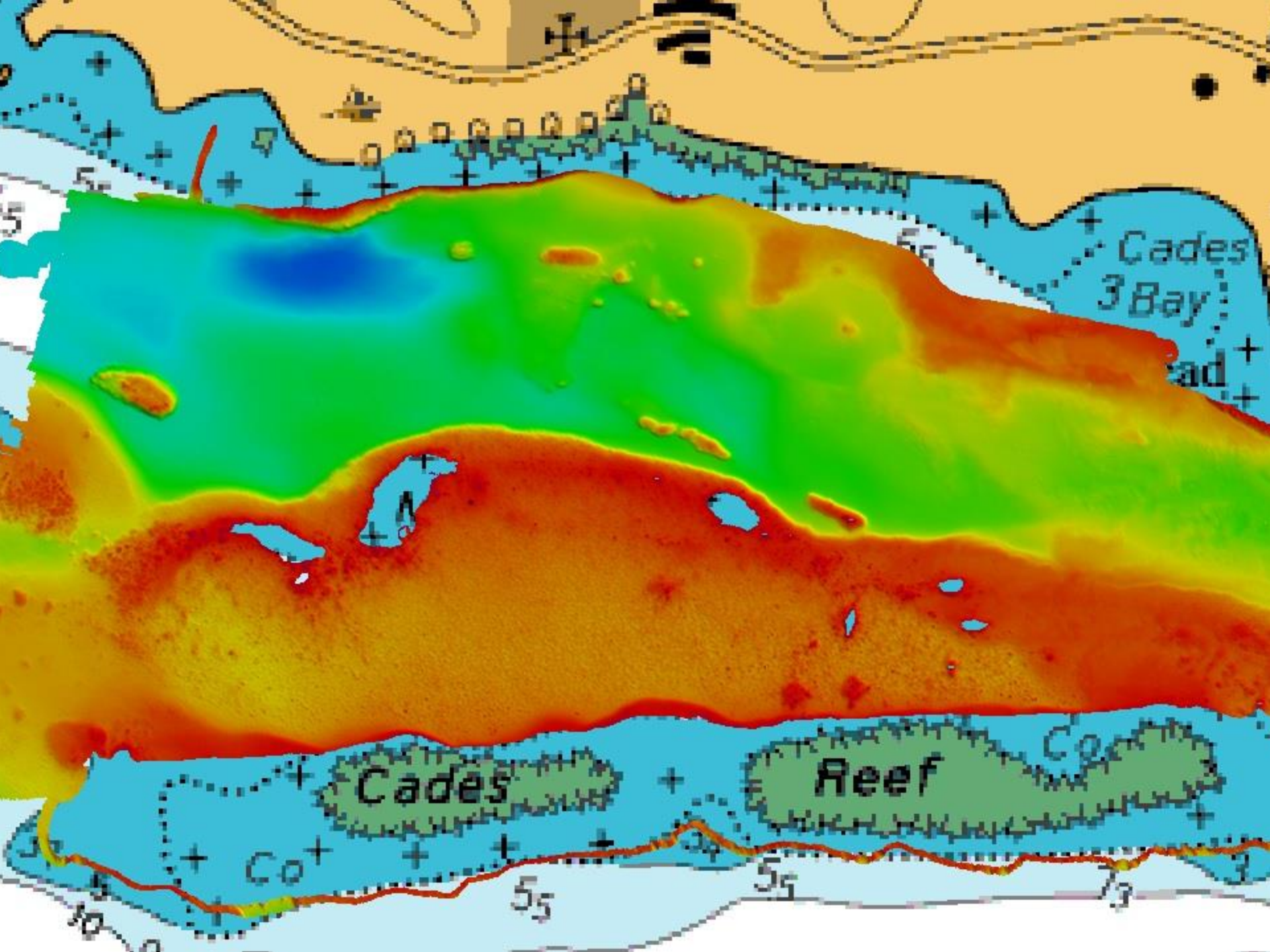
BVI Survey



KINGFISH BANKS



DEPTHS
(see Note)





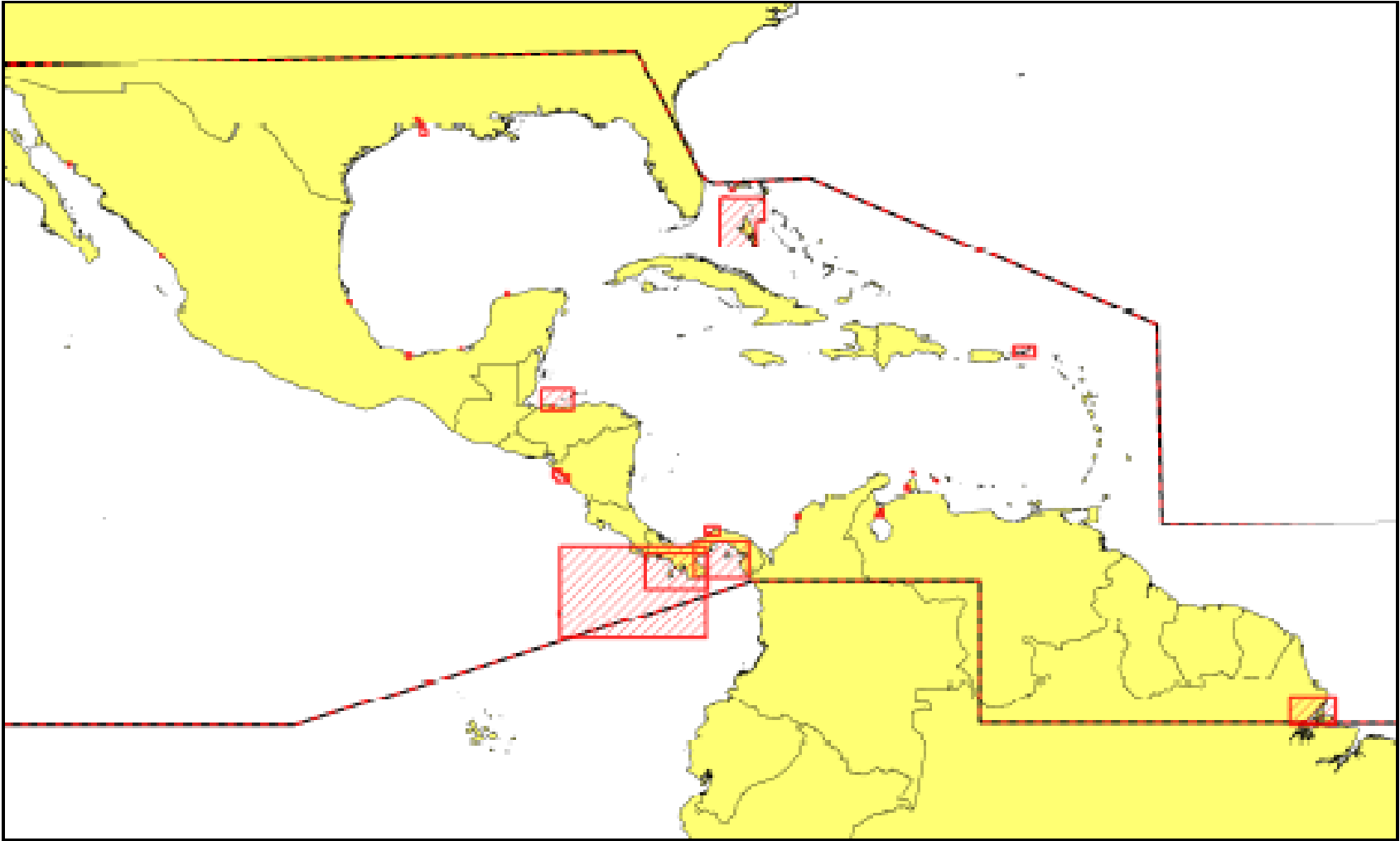
United Kingdom
Hydrographic Office

2013-14 Paper Chart Production

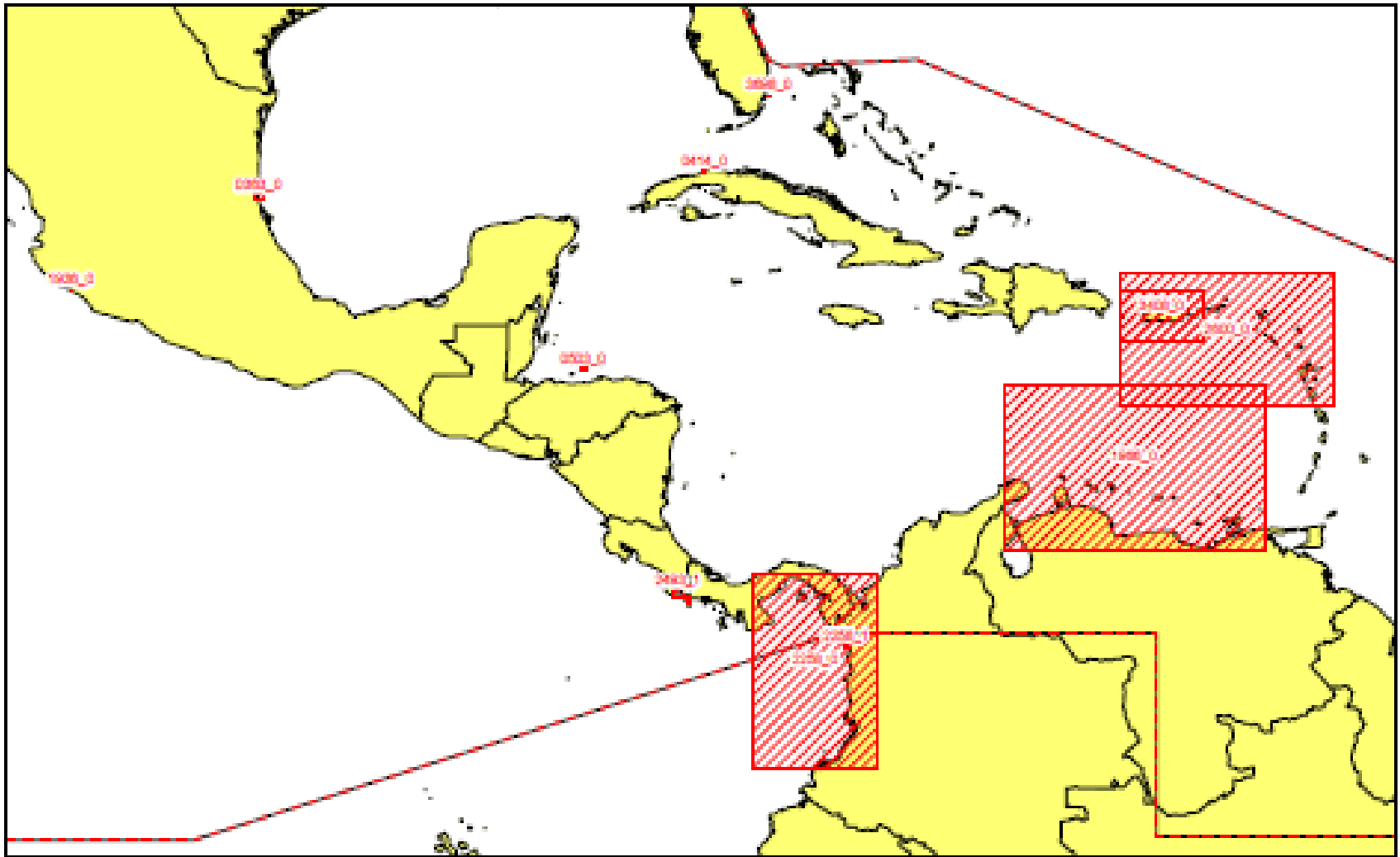
19 New Edition charts and 10 New Charts



MACHC - Paper Chart New Editions



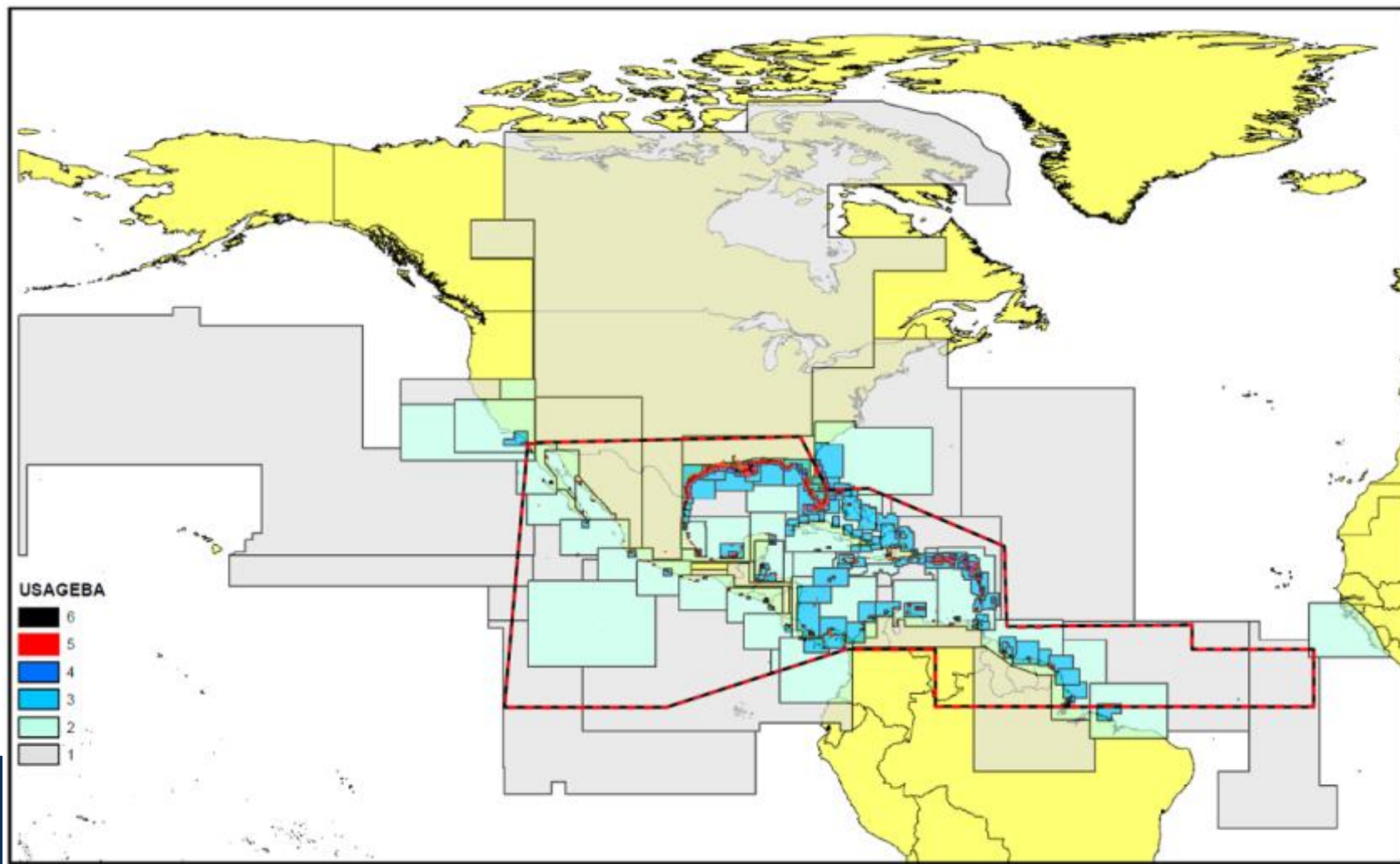
MACHC - Paper Chart New Charts





United Kingdom
Hydrographic Office

ENCs in MACHC Region



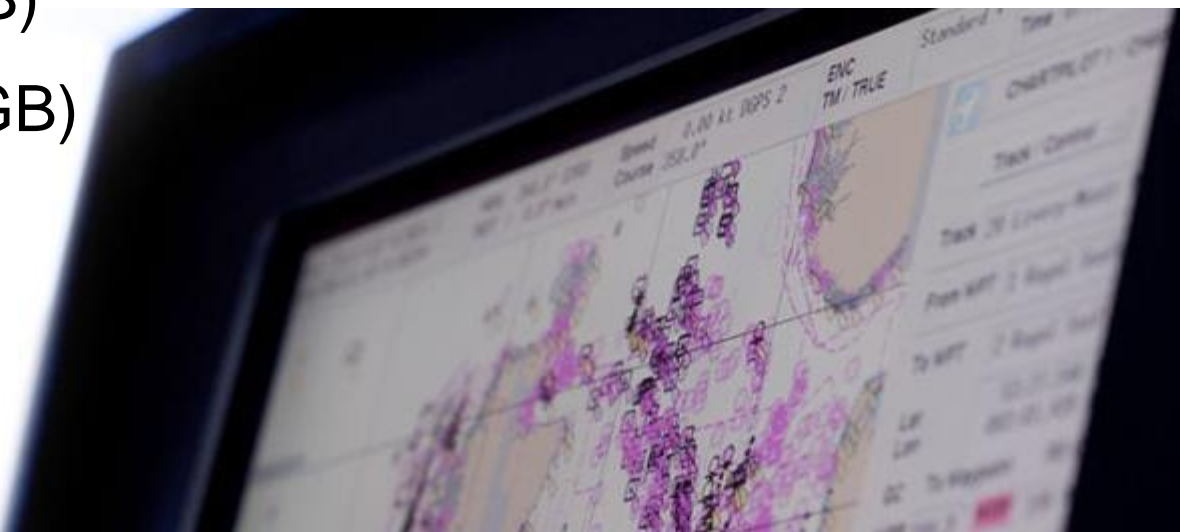


United Kingdom
Hydrographic Office

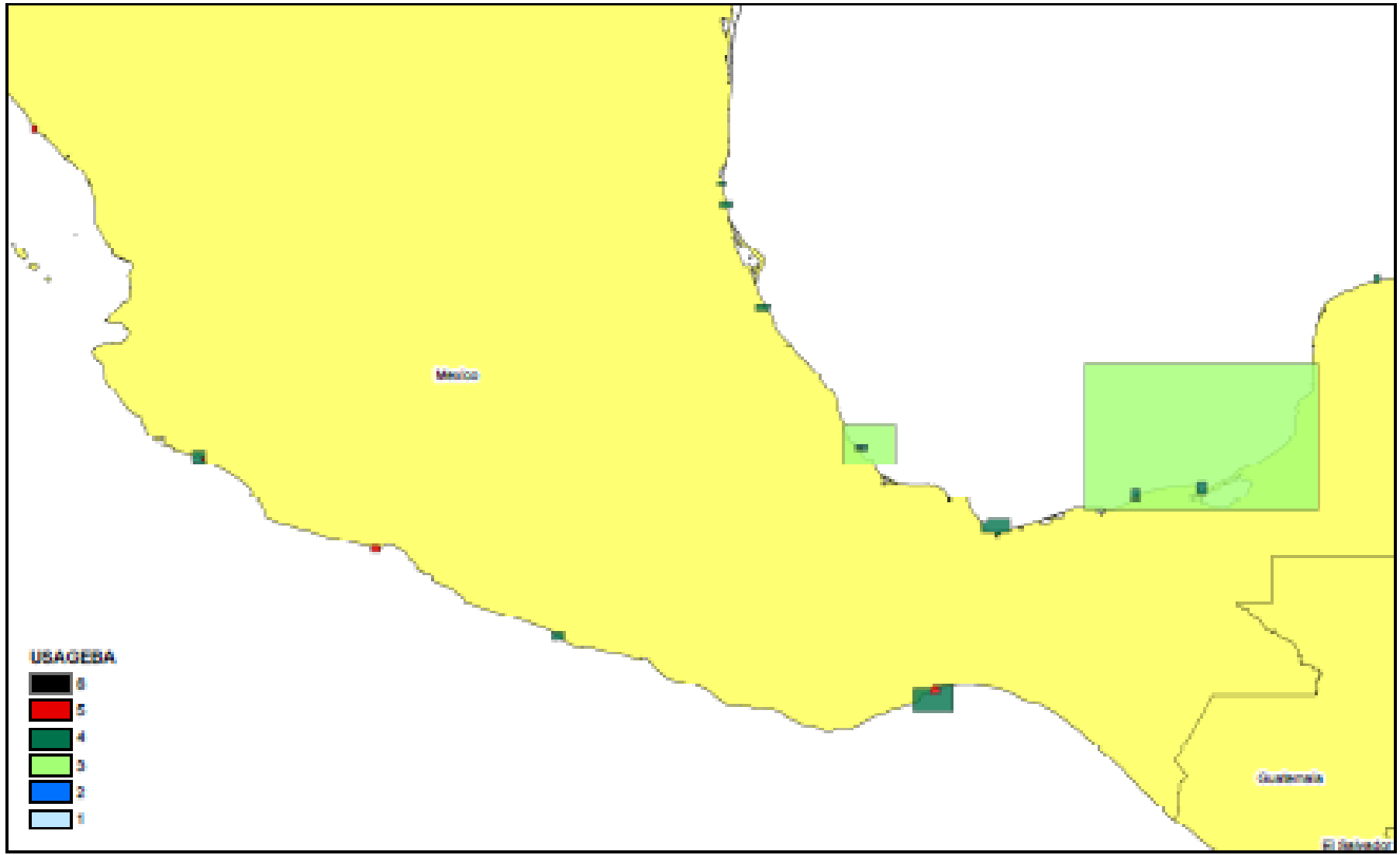
ENC Production

656 ENC intersect the MACHC region of which 198 are GB cells:

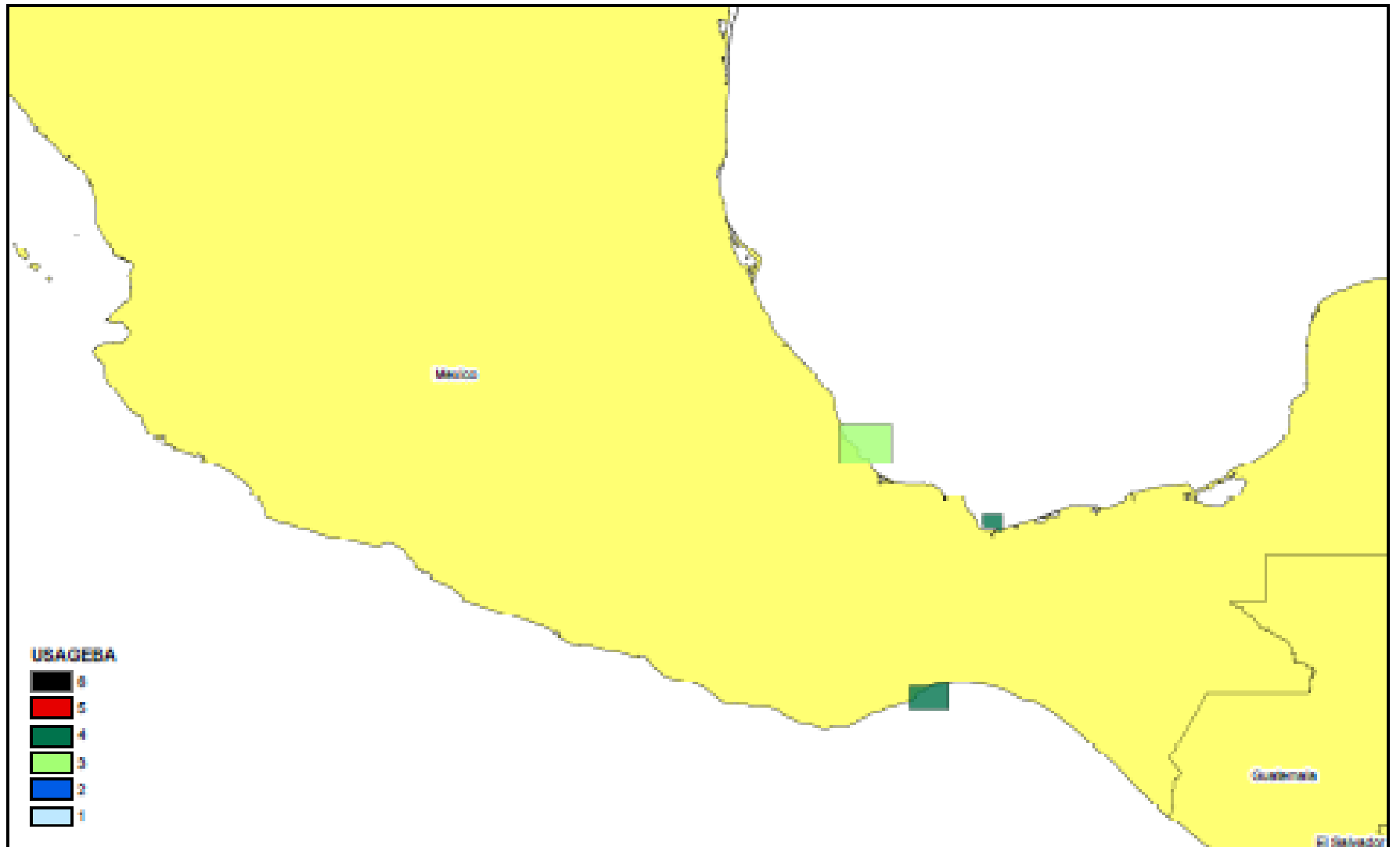
- 26 Berthing (5 GB)
- 304 Harbour (75 GB)
- 185 Approach (48 GB)
- 94 Coastal (39 GB)
- 34 General (21 GB)
- 13 Overview (10)



Mexico - Interim GB ENC Coverage Bands 3-6 in 2009 (18 ENC's)



Mexico - Interim GB ENC Coverage Bands 3-6 in 2014 (3 ENC's)





United Kingdom
Hydrographic Office

GB cells have been produced for:

- **Antigua, Bahamas, Barbados, Belize, Costa Rica, Dominica, Dominican Republic, El Salvador, Grenada, Guayana, Guatemala, Honduras, Jamaica, Nicaragua, Panama, St Kitts & Nevis, St Lucia, St Vincent & the Grenadines, Trinidad together with our OT's (Anguilla, Bermuda, BVI, Cayman Islands, Montserrat, Turks & Caicos).**

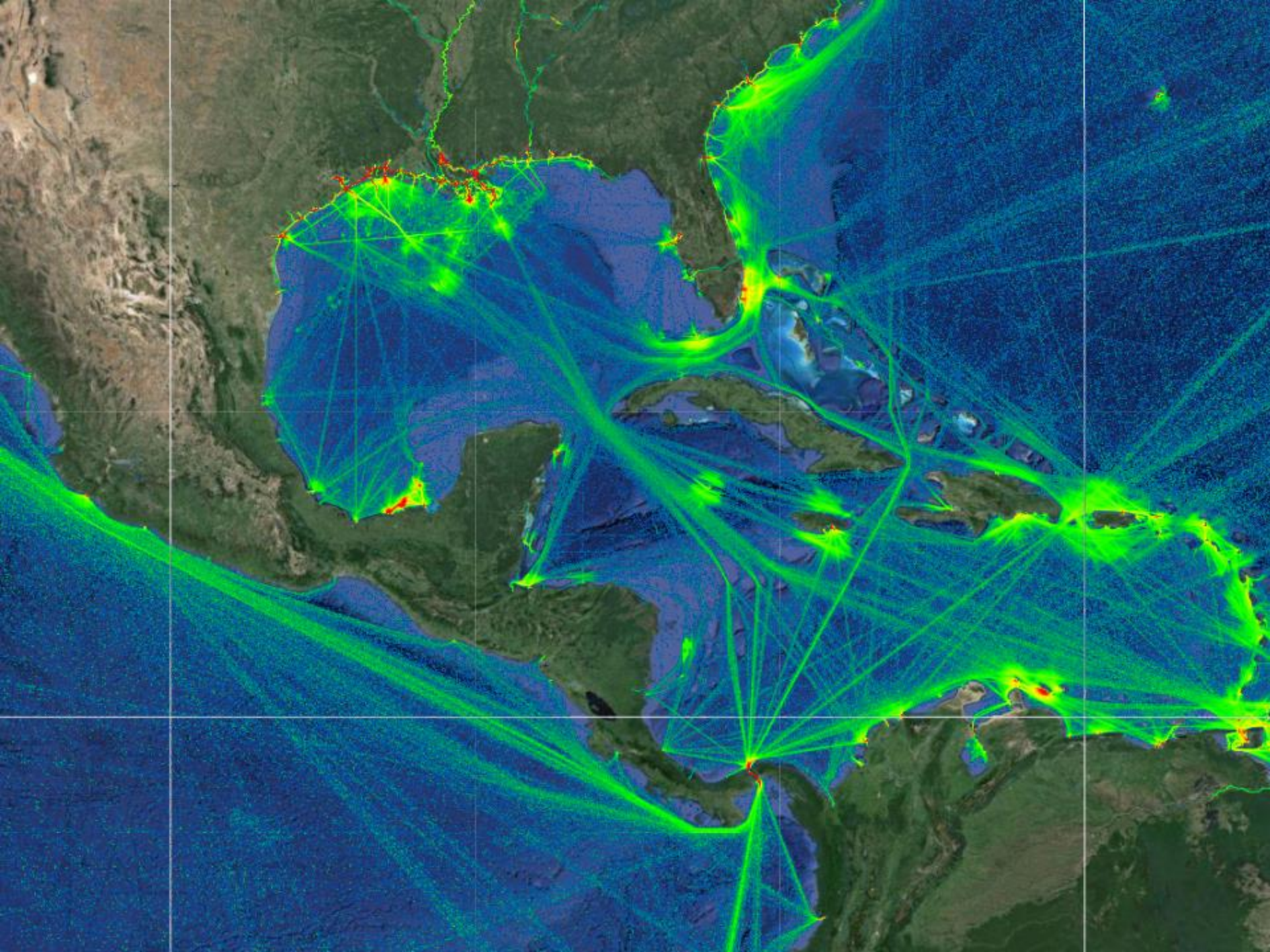


United Kingdom
Hydrographic Office

Development of Coverage

The UKHO is always looking at improving coverage for the maritime community.

One example of this is using AIS data to analyse traffic patterns, for example in Vanuata (SWP RHC)





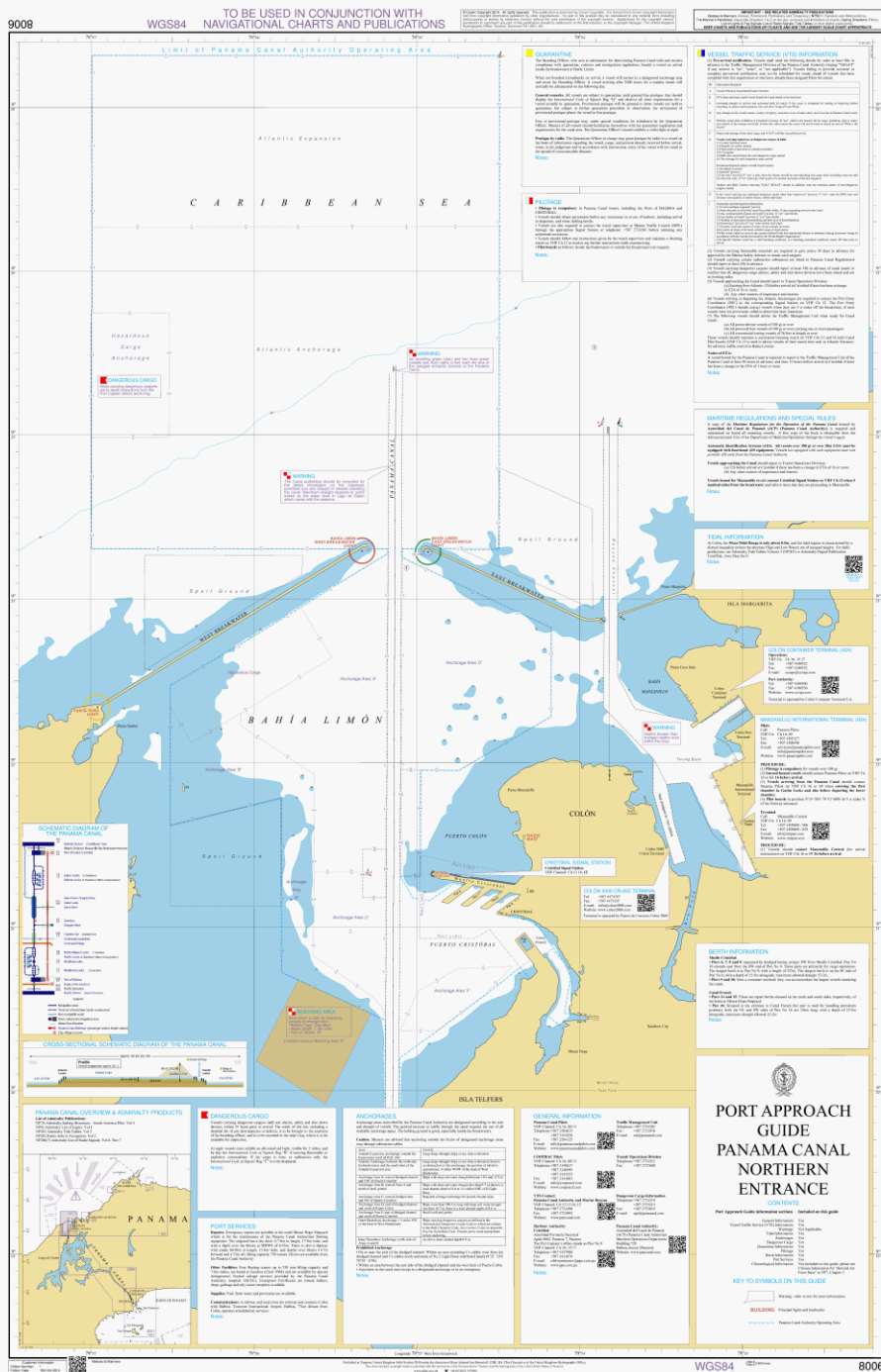
United Kingdom
Hydrographic Office

New Products

- **Port Approach Guide - contains information from**
 - Standard navigation charts
 - Sailing Directions
 - Tidal Publications
 - Lights
 - Radio Signals

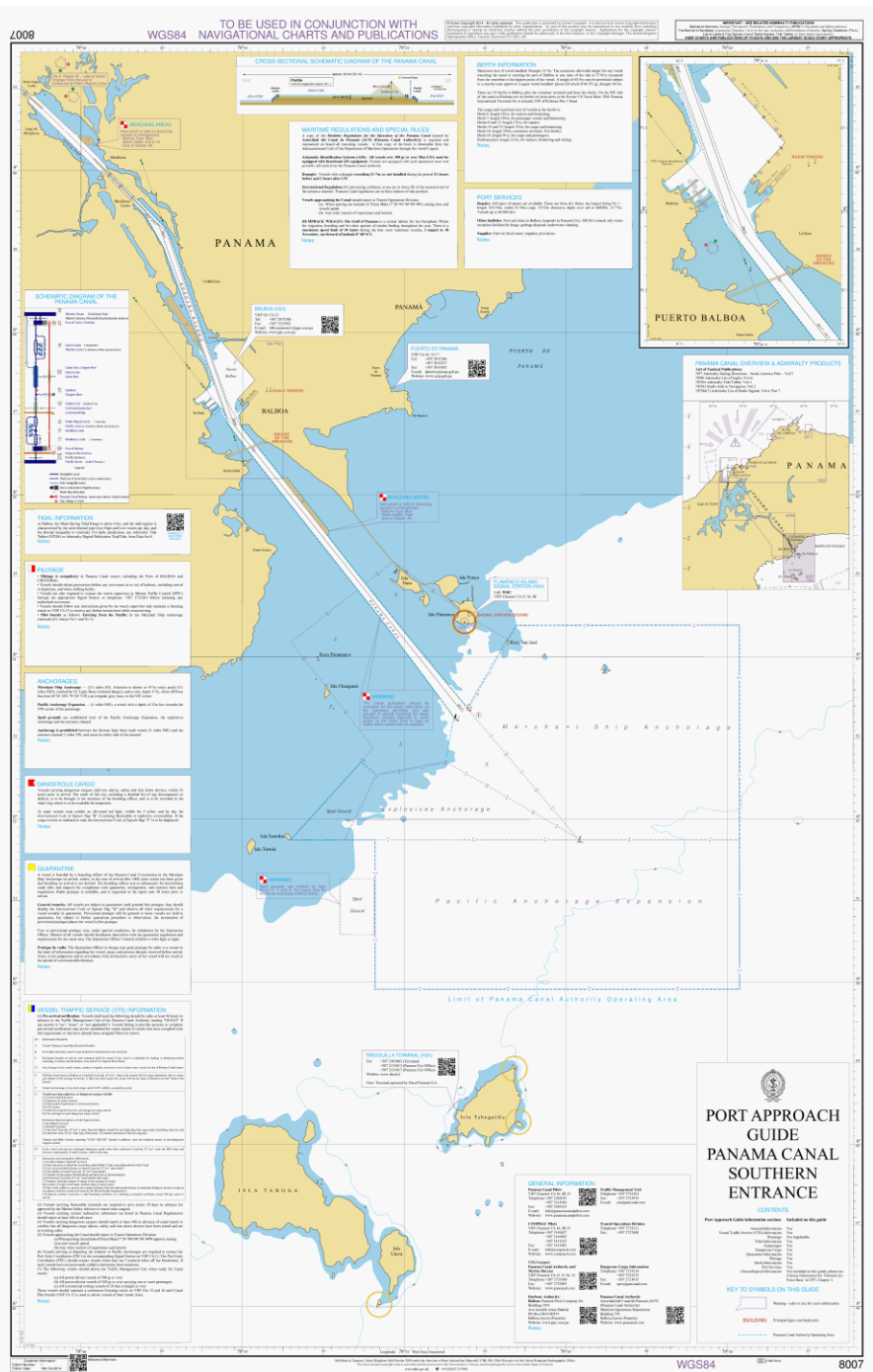


United Kingdom
Hydrographic Office





United Kingdom Hydrographic Office





United Kingdom
Hydrographic Office

Looking Ahead

Continuing UK activity 2014-15

- Chart Production - 2 New Editions 12 months
- Publications - 1 New Edition Sailing Direction
Port Approach Guides
- Continuing efforts to support local data gathering initiatives, and to link these into a broad programme of prioritised chart compilations and new editions.





United Kingdom
Hydrographic Office

Questions