



NATIONAL GEOSPATIAL-INTELLIGENCE AGENCY
Know the Earth... Show the Way... Understand the World

Maritime Safety Watch:

NAVAREA IV / XII

World-Wide Navigational Warning Service

Meso-American and Caribbean Hydrographic Commission Meeting
10-13 December 2014

Jim Rogers
Technical Executive
NGA Maritime Safety Office
James.E.Rogers@nga.mil

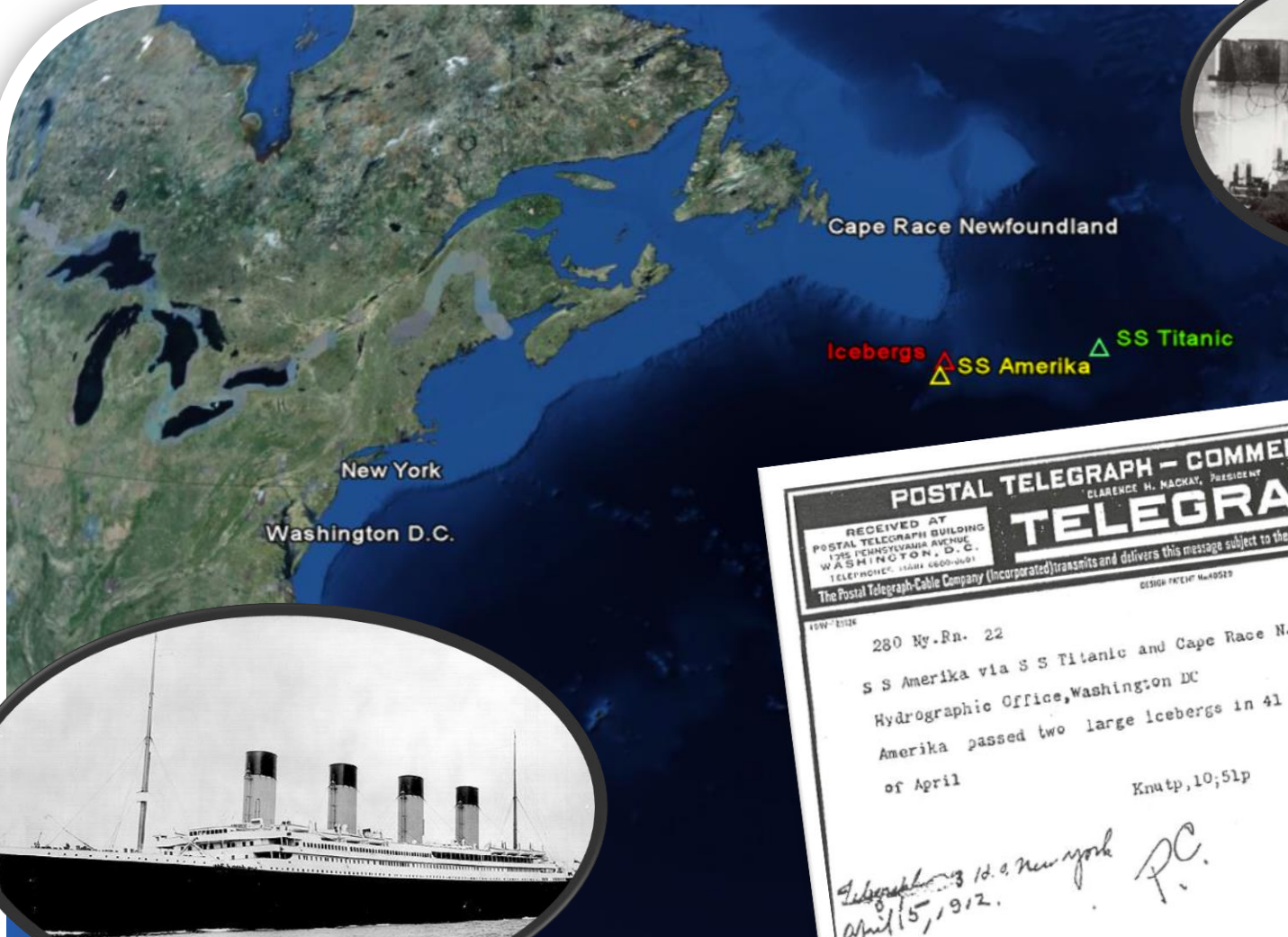




NATIONAL GEOSPATIAL-INTELLIGENCE AGENCY

Know the Earth... Show the Way... Understand the World

April 14-15, 1912



POSTAL TELEGRAPH - COMMERCIAL CABLES
CLARENCE H. MACKAY, PRESIDENT

RECEIVED AT
POSTAL TELEGRAPH BUILDING
1725 PENNSYLVANIA AVENUE
WASHINGTON, D. C.
TELEPHONE: 11411 (2000-2001)

DELIVERY NO. 795

TELEGRAM
The Postal Telegraph-Cable Company (Incorporated) transmits and delivers this message subject to the terms and conditions printed on the back of this blank

DESIGN PATENT No. 40517

280 N.Y.Rn. 22

S S Amerika via S S Titanic and Cape Race N.F. April, 14, 1912

Hydrographic Office, Washington DC

Amerika passed two large icebergs in 41 27 N 50 8 W on the 14th of April

Knutp, 10; 51p

62496
filed with
2995

HYDRO. OFFICE
Rec'd APR 15 1912

Enclosures

Am

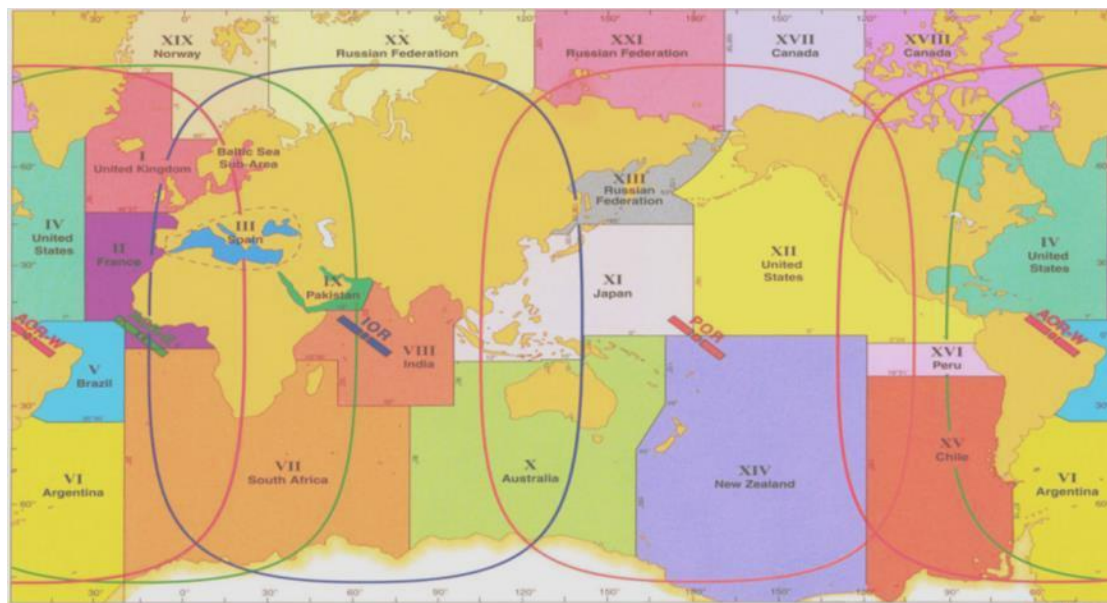
Subgraph 10.0 New York April 15, 1912. P.C.

mm



WWNWS Mission

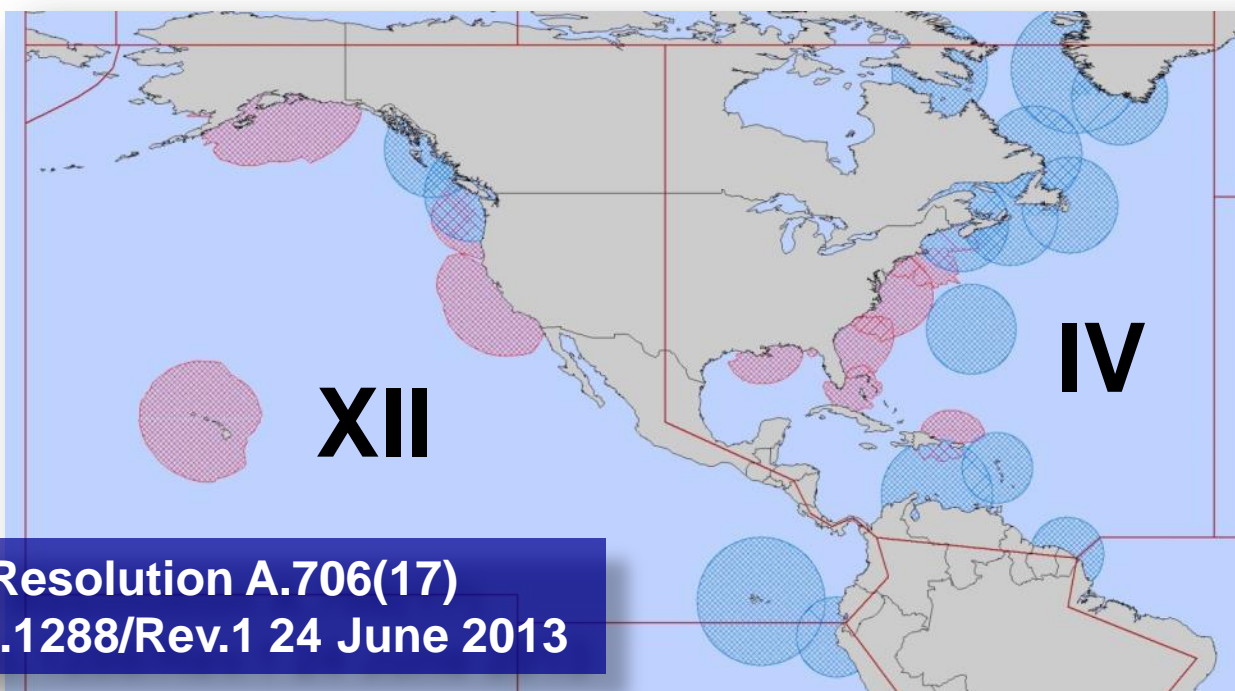
The World-Wide Navigational Warning Service (WWNWS) is the internationally and nationally coordinated service for the promulgation of navigational warnings.





NAVARE IV/XII Coordinator shall...

Endeavour to be informed of all events that could significantly affect the safety of navigation within the NAVAREA



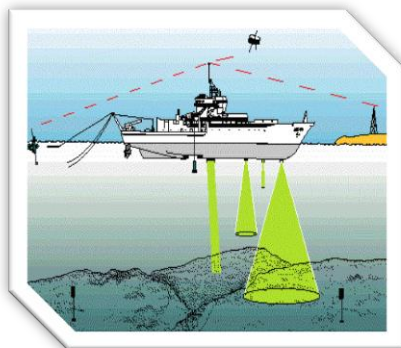
IMO Resolution A.706(17)
MSC.1/Circ.1288/Rev.1 24 June 2013



NAVARE IV/XII Coordinator shall...

Assess all information immediately upon receipt in the light of expert knowledge for relevance to navigation in the NAVAREA;

Select information for broadcast





National Coordinator shall...

Forward coastal warnings and relevant associated information for wider promulgation directly to NAVAREA Coordinator



IMO Resolution A.706(17)
MSC.1/Circ.1288/Rev.1 24 June 2013



Cost to National Coordinators...



\$0

GRATIS

Email your maritime safety information to navsafety@nga.mil and NGA will disseminate it via Inmarsat at **NO COST** to **YOU**



Mexico

- In 2014 NGA promulgated **80 warnings** from sources sent to navsafety@nga.mil
- 12 warnings currently in force

Thank you!!

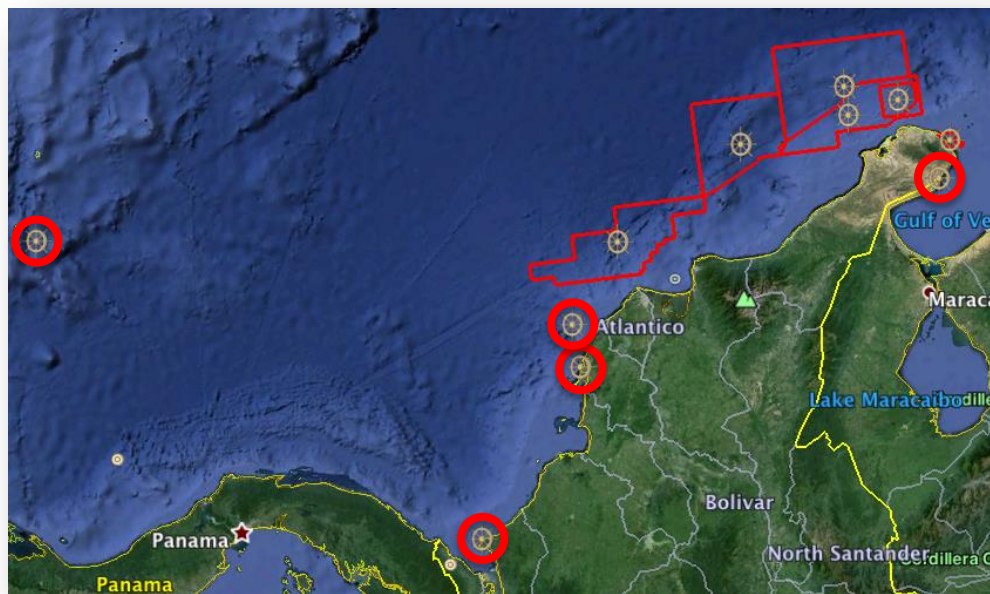




Colombia

- In 2014 NGA promulgated **61 warnings** from sources sent to navsafety@nga.mil
- 11 warnings currently in force

Thank you!!

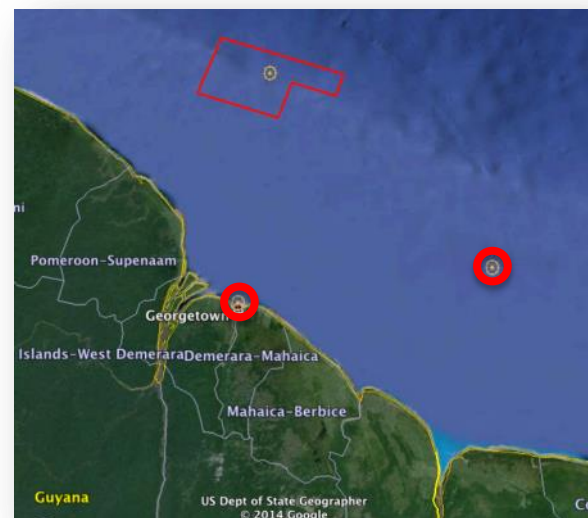




Guyana

- In 2014 NGA Issued **3 warnings** from sources sent to navsafety@nga.mil
- 3 warnings currently in force
 - Prior to 2013, NGA had never received any source from Guyana. That changed in May 2013 when Guyana sent a representative to the IHO MSI Capacity Building Course in Trinidad.

Thank you!!





Honduras

- In 2013 NGA Issued **4 warnings** from sources sent to navsafety@nga.mil
- 1 warning currently in force

Thank you!!





How many countries are within NAVAREA IV and XII?

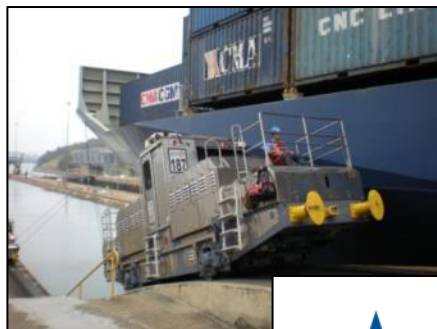
- A LOT
- Send it to NGA and NGA will disseminate a navigation safety warning for you... **AT NO COST TO YOU**

- Mariners will be able download your warning as a text file or as a Google Earth KMZ from NGA's Maritime Safety Information website!

- [HTTP://http://msi.nga.mil/NGAPortal/MSI.portal](http://msi.nga.mil/NGAPortal/MSI.portal)
 - Select the Broadcast Warnings link



Panama ENC



NOAA Office of Coast Survey

HOME | ABOUT US | CONTACT | REGIONAL MANAGERS

Search

Nautical Charts & Pubs | Surveys & Wrecks | GIS & Other Products | Research & Development | Customer Service | Business Opportunities | Education

Paper Charts (RNC & PDF) | Electronic Charts (ENC) | Coast Pilot | Help

Place Names: Standard Place Name Search... Search Auto Zoom Map Satellite

Colon, El Porvenir, Parque Nacional Chagres, Chepo, Pacora, Panama, Las Cumbres, Nuevo Emperador, Burunga, Vista Alegre, La Chorrera, Capira District, Panama Bay, La Pintada, Churuquita Grande, Penonome

LAT LON

Map data ©2014 Google | Terms of Use

Privacy Policy | Disclaimer | NOAA's National Ocean Service | NOAA | U.S. Department of Commerce

General Information & Links

- NOAA RNCs (RNC): Geo-referenced charts in BSB format.
- Terms & Conditions
- Print-on-Demand (POD): Order POD charts from Certified Agents
- NOAA PDFs (PDF): Full-size, 400dpi printable charts.
- NOAA BookletChart (BC): 8.5" x 11" printable panels of the charts.
- Notice to Mariner (NM): Weekly corrections to the RNCs.
- NOAA ChartViewer (View)
- Historical Map & Chart Collection

Map Selection Information

- Four ENC (S-57) Cells over the Panama Canal. (US409860, US509860, US515390, & US515410)
- The ENC Cells are available from the NOAA ENC Website: <http://www.nauticalcharts.noaa.gov/mcd/enc/index.htm>



Haiti ENC

NOAA Office of Coast Survey

HOME | ABOUT US | CONTACT | REGIONAL MANAGERS

Nautical Charts & Pubs Surveys & Wrecks GIS & Other Products Research & Development Customer Service Business Opportunities Education

Paper Charts (RNC & PDF) Electronic Charts (ENC) Coast Pilot Help

Place Names Standard Place Name Search... Search Auto Zoom Map Satellite

Baracoa

Port-de-Paix

Cap-Haïtien

Port-au-Prince

General Information & Links

- NOAA RNCs (RNC): Geo-referenced charts in BSB format. Terms & Conditions
- Print-on-Demand (POD): Order POD charts from Certified Agents
- NOAA PDFs (PDF): Full-size, 400dpi printable charts
- NOAA Booklet/Chart (BC): 8.5" x 11" printable panels of the charts
- Notice to Mariner (NM): Weekly corrections to the RNCs.
- NOAA ChartViewer (View)
- Historical Map & Chart Collection

Map Selection Information

Map data ©2014 Google

Privacy Policy | Disclaimer | NOAA's National Ocean Service | NOAA | U.S. Department of Commerce



- Seven ENC (S-57) Cells over Haiti. (US410880, US510880, US410930, US510930, US510820, US510885, & US510910)
- The ENC Cells are available from the NOAA ENC Website:
<http://www.nauticalcharts.noaa.gov/mcd/enc/index.htm>



NATIONAL GEOSPATIAL-INTELLIGENCE AGENCY

Know the Earth... Show the Way... Understand the World