

MESOAMERICAN AND CARIBBEAN SEA HYDROGRAPHIC COMMISSION
15th Meeting, Manzanillo - Mexico, 10-13 December 2014

NATIONAL REPORT - COLOMBIA

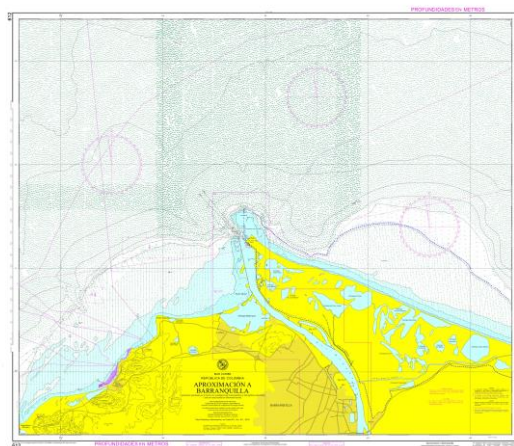


1. Hydrographic Office /Service:

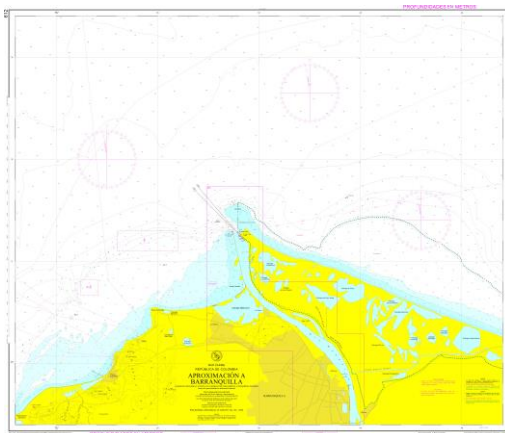
Dirección General Marítima - DIMAR
Centro de Investigaciones Oceanográficas e Hidrográficas - CIOH
Servicio Hidrográfico Nacional

2. Surveys (6)

- 808 Puerto Brisa
- 608 Aproximación a Dibulla (Guajira)
- 612 Aproximación a Barranquilla
- 625 Bahía Colombia
- 229 Bahía Portete
- 262 Bahía de Cartagena
- 246 Puerto Zuñiga
- Hydrographic Survey in the Antarctic continent (Gerlache Strait - 2014-2015)



Área levantada 612 Aproximación a Barranquilla



Nueva edición carta 612 Aproximación a Barranquilla

3. New charts, new edition and updates: (2 news charts, 1 News Edition and 13 Updates)

New charts (first edition)

- 808 Puerto Brisa (Guajira)
- 608 Aproximación a Puerto Brisa (Guajira)
- 246 Puerto Zuñiga

New Edition

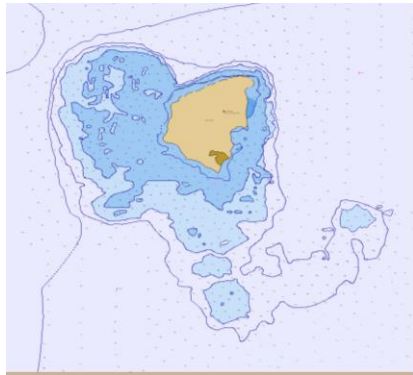
- 612 Aproximación a Barranquilla

Updates

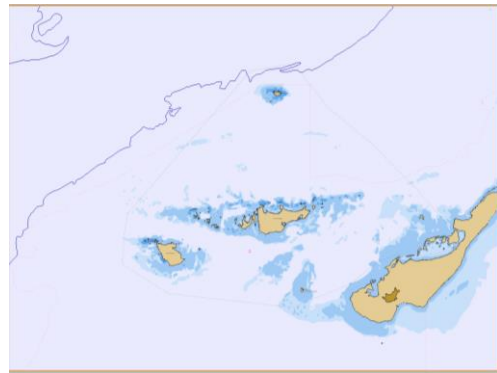
- 005 Carta General del Caribe Colombiano
- 231 Cabo de la Vela
- 244 Bahía de Taganga a Punta Barro Blanco
- 245 Ciénaga
- 253 Rio Magdalena
- 280 Cabo Tiburón a Isla Terrón de Azúcar
- 407 Bajo Tortuguilla a Punta Canoas
- 409 Isla Fuerte a Punta Comisario
- 410 Isla Fuerte a Punta Comisario
- 612 Aproximación a Barranquilla
- 618 Golfo de Morrosquillo
- 626 Archipiélago de San Bernardo
- 804 Bahía Santa Marta

Edition ENC according new ECNN (08 first edition and 02 New edition)

- 1 CO500267 Isla Fuerte
- 2 CO400222 Aproximación a Puerto Lopez
- 3 CO400255 Isla del Rosario
- 4 CO500242 Isla Aguja a Puna Cinto
- 5 CO500885 Bahía de Santa Catalina
- 6 CO500623 Punta Yarumal A Punta Arena del Norte
- 7 CO500603 Aproximación a Bahía Portete
- 8 CO400416 Aproximación a Isla Cayos de Quitasueño
- 9 CO300025 Punta Canoas a Santa Marta (New Edition)
- 10 CO300024 Cabo Tiburón a Bahía de Cartagena (New Edition)



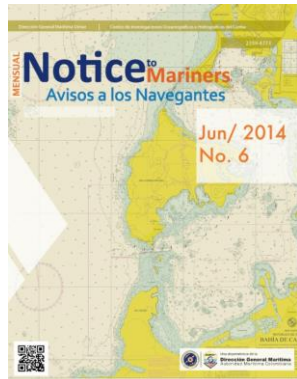
CO500267 Isla Fuerte



CO400255 Isla del Rosario

4. New Publications and updates

Summary Notice to Mariners 2014
Sailing Directions
List of Lights 2014



Summary Notice to Mariners



Sailing Directions

5. MSI

SERVICE	YES	NO	PARTIAL	NOTES
Local Warning	X			
Coastal Warnings	X			
Navarea Warnings	X			
Information on Ports and Harbours	X			Vía NAVAREA XII Coordinator

GMDSS IMPLEMENTATION (IMO 970 - GMDSS Handbook)

SERVICE	YES	NO	PARTIAL	NOTES
Master plan		X		
A1 Área			X	
A2 Área			X	
A3 Área		X		
NAVTEX		X		
SafetyNET		X		

6. C-55. Last update in web IHO, June 8/2009.

The data will be updated

6.1 HYDROGRAPHICS SURVEYS

1.1 Status of hydrographic survey of all navigable waters, including internal waters, out to the limits of the EEZ:

Survey coverage, where:

A1/A2 = % adequately surveyed 0-200m / >200m

B1/B2 = % requiring re-survey at larger scale or to modern standards 0-200m / >200m

C1/C2 = % which has never been systematically surveyed 0-200m / >200m

	A/1	A/2	B/1	B/2	C/1	C/2
Depths < 200m	84	18	0	0	16	82

Amplifying information: The concept of EEZ is not applicable

6.2 NAUTICAL CHARTING

If do you have a nautical charting capability, complete the details below

2.1 Status of nautical charting within the limits of the EEZ

Coverage of charts published by your organization, where:

A = percentage covered by INT series, or a paper chart series meeting the standards S-4.

B = percentage covered by Raster Navigational Charts (RNCs) meeting the standards in S-61.

C = percentage covered by ENC's meeting the standards in S-57.

Purpose/Scale	A	B	C
Offshore passage/Small	100	0	100
Landfall and Coastal passage/Medium	73.3	0	85.7
Approaches and Ports/Large	88.2	0	35.1
Percentage of Group A showing depths in meters	100	0	100
Percentage of Group A referenced to a satellite datum	100	0	100

7. CAPACITY BUILDING

7.1 Training received:

- Pasantias HPD - Lima_ Perú
- Levantamientos y cartografía en Ríos - Perú.

7.2 Training needed:

- Submarine Topography
- Maritime Safety Information (MSI)
- Marine Spatial Data Infraestructure . (MSDI)
- Development of Hydrographic Data Base
- Training and certification in standard chart paper production
- Training in design and coding of light in channel signaling

7.3 Training and courses offered:

- Escuela Naval de Suboficiales. ARC Barranquilla. Hydrographic and Oceanography technology. www.escuelanavalsuboficiales.edu.co
- Masters in physical oceanography - Escuela Naval de Cadetes. www.escuelanaval.edu.co

7.4 Projects under development:

- Cartographic and hydrographic project 2014
- Information management model for strengthening the National Hydrographic Service 2013-2014 (phase 2 of 2).

8. OCEANOGRAPHIC ACTIVITIES

- Measurement of oceanographic parameters and marine meteorology
- Numerical modeling of oceanographic processes: of wave and presentation of virtual buoys; assessor in B and R operations; forecast pursuit spots hydrocarbons
- Oceanographic and marine meteorology forecast
- Studies and assessor in oceanographic subjects and coastal erosion
- Land reception satellites station GOES
- Directional wave buoys
- Study weather in the Caribbean surf from Reanalysis data CIOH done in the SWAN model.
- Tsunami Warning Center (CAT)
- The Scientific Journal No. 32
- scientific research from the components of physical oceanography, chemistry and geomorphology in the Antarctic continent (Gerlache Strait)

9. OTHER ACTIVITIES

- Determination of DIMAR jurisdiction in the Colombian Caribbean
- Geomorphology and sedimentology of coasts.
- Studies of circulation of currents and sediments.

- Studies of winds and tides.
- IBCSEP Chairman
- IBCCA Chairman

Captain Ricardo Molaes Babra

Director Centro de Investigaciones Oceanográficas e Hidrográficas del Caribe.