



SWAtHC RELEVANT MATTERS 2014/2015

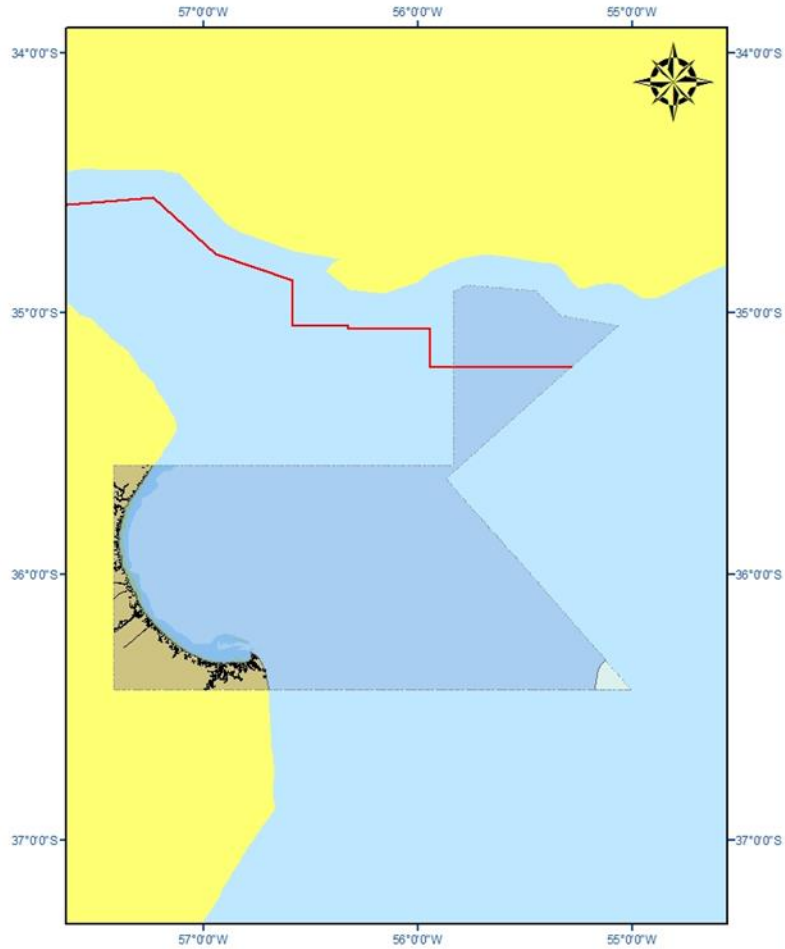
**16th MACHC Meeting
7 al December 12, 2015
St. John's, Antigua and Barbuda**

ENC Coordination AR - UY

- **The NHS and SOHMA presented the results of joint work on the coordination of ENC publication, limits and procedures to be followed.**

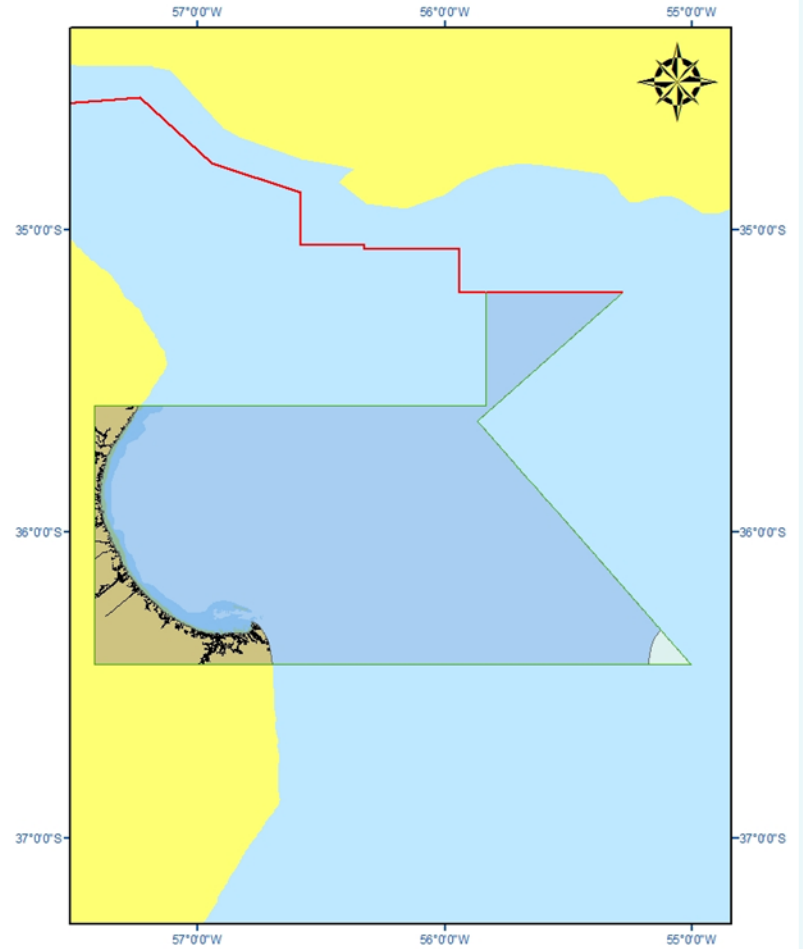
AR201130 limit the modified cell

Anteúltima Edición

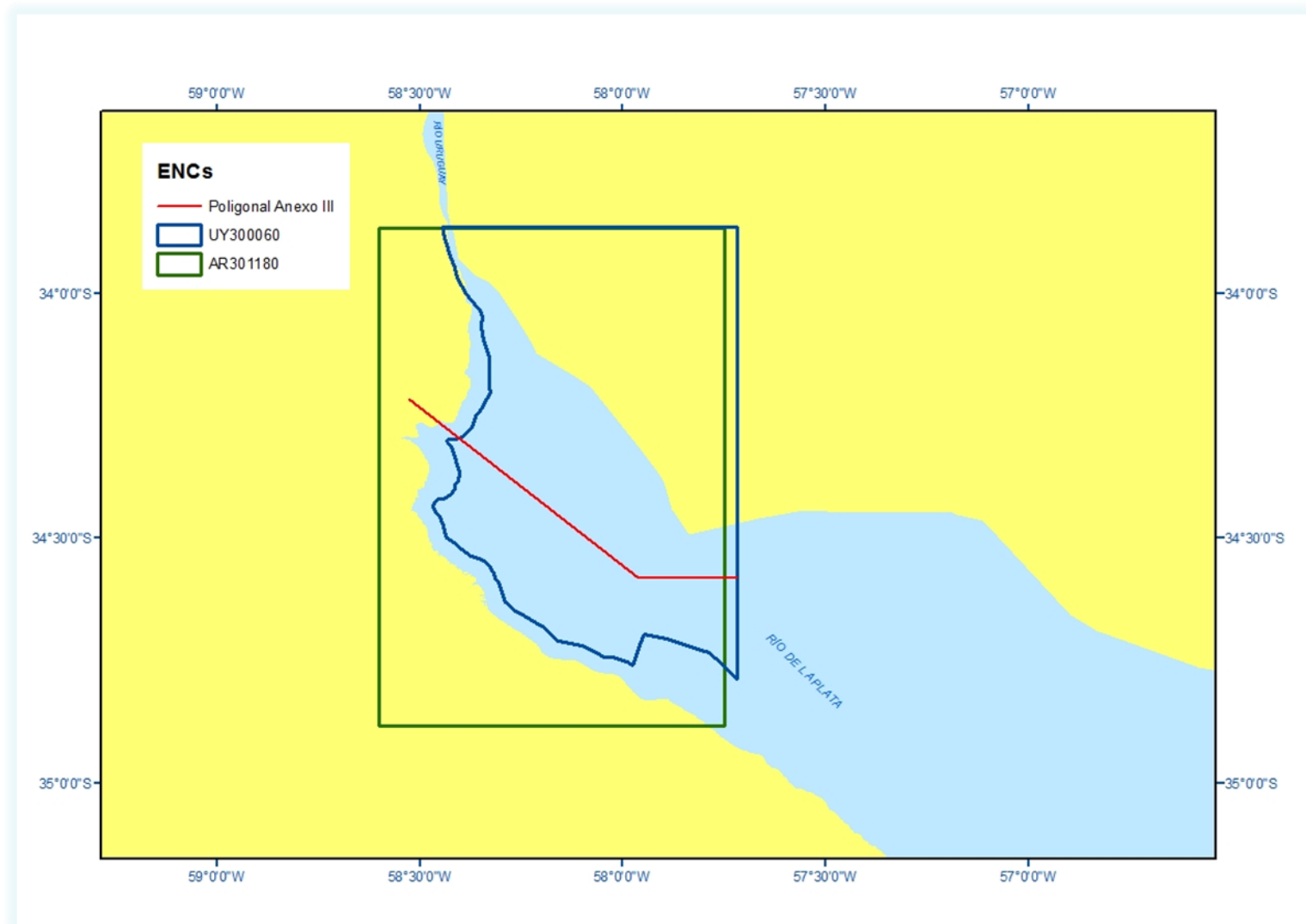


AR201130 Third Edition

Última Edición



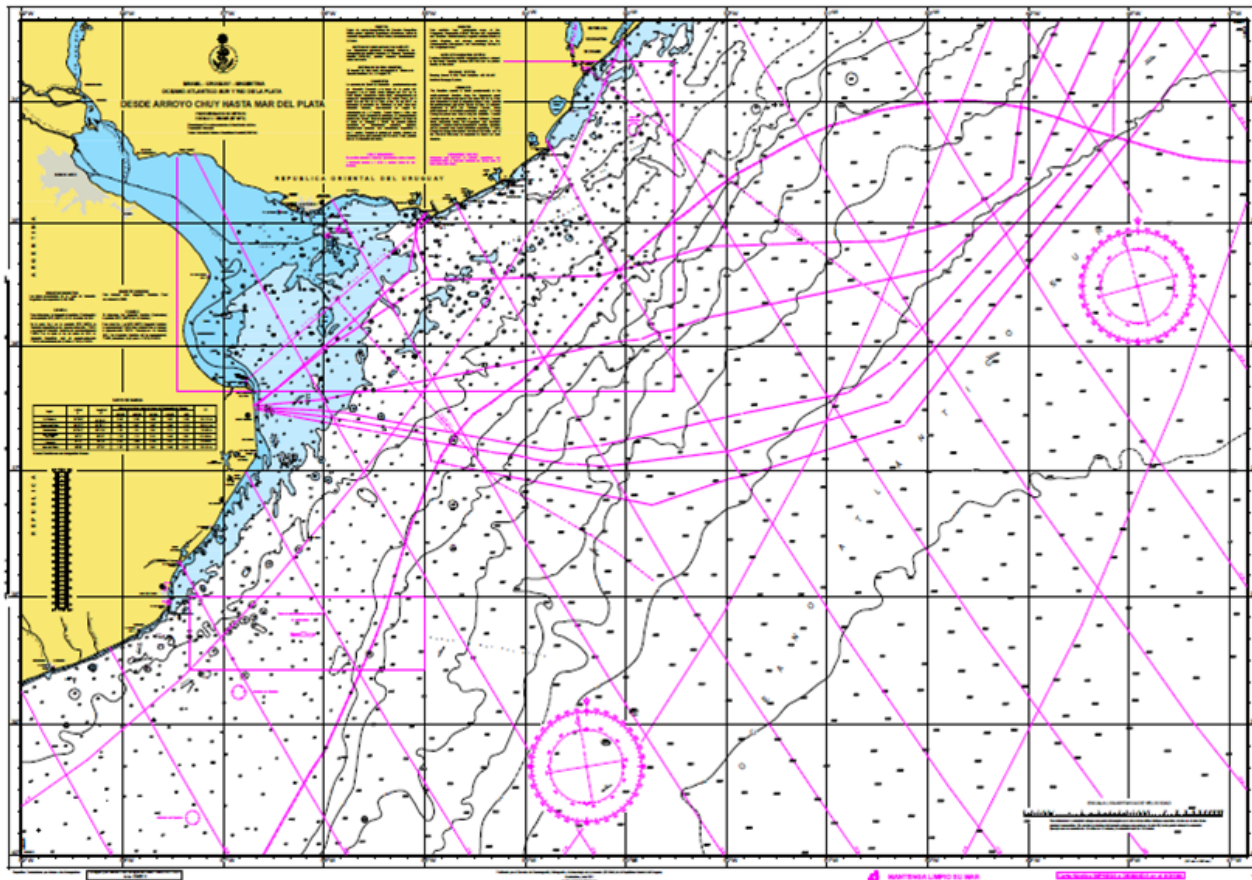
AR201130 Fourth Edition



UY300060 is published.

The AR301180 is in production. Its limit will be from the red polygon ele described in Annex III.

Argentina and Uruguay working together to publish the INT2010.

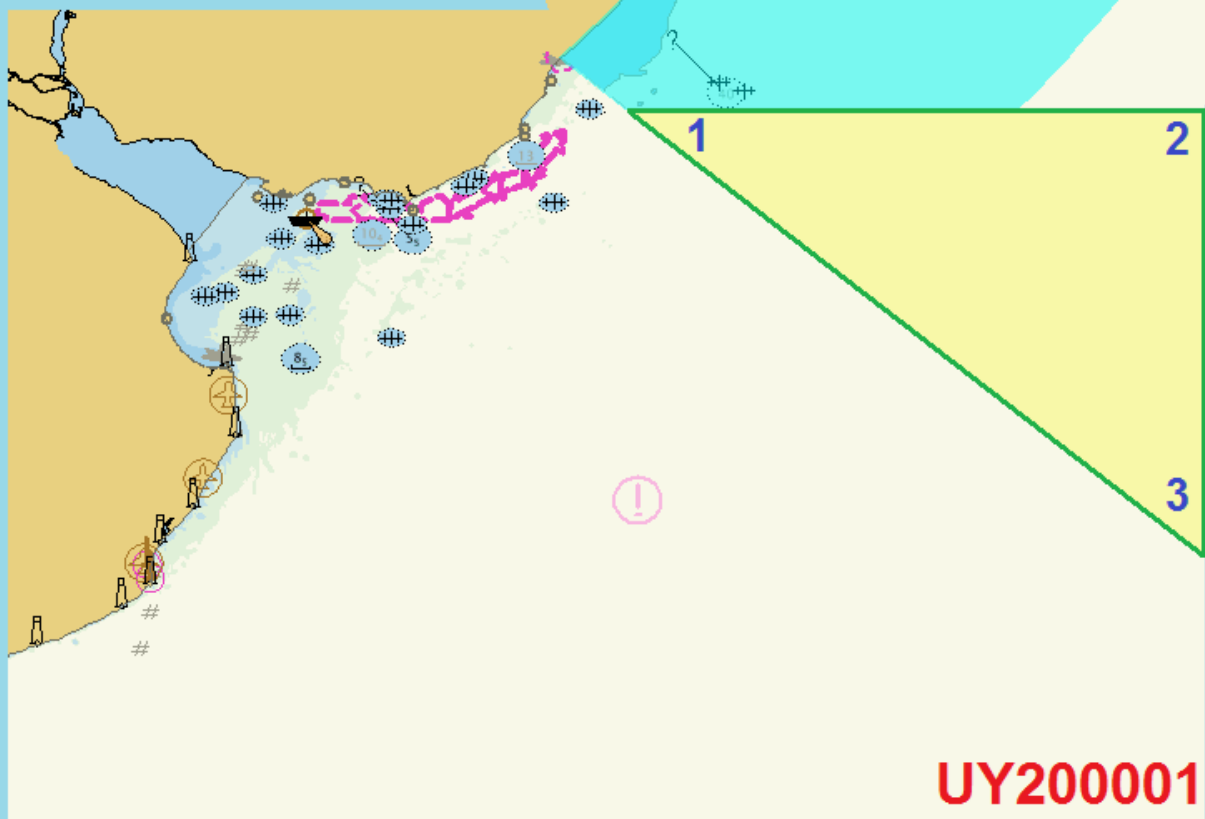


ENC Coordination BR - UY

BR Hydrographic Services and UY are working on a "Bilateral Cooperation Instrument SOHMA - DHN" for hydrography and nautical charting.

Meanwhile informally used the Lateral Maritime between BR and UY as coverage Limit between cells.

BR221080



UY200001

Vértices del área

- 1:** 34°10'00"S
052°43'23"W
- 2:** 34°10'00"S
046°50'00"W
- 3:** 37°53'00"S
046°50'00"W



SWAtHC support the establishment of The Latin American RENC for ENC validation.

SWAtHC and neighbour countries will benefit in aspects like validation training and the Member States ENC quality, as well as the quality of future inland rivers cells will increase.

Capacity Building

2015

- were conducted last November Workshops S- 100 and MSDI funded by the CBSC.

2016

- Tidal stations (BRAZIL)
- Bathymetric Data Management (URUGUAY)
- Multibeam practical and data processing course (ARGENTINA).