



National Report Suriname 2017

MESO AMERICAN AND CARIBBEAN SEA HYDROGRAPHIC COMMISSION

18th Meeting – Varadero, Cuba
27 November – 2 December 2017

MARITIME AUTHORITY SURINAME

November 25, 2017

National Report Suriname 2017

MESO AMERICAN AND CARIBBEAN SEA HYDROGRAPHIC COMMISSION
18th Meeting – Varadero, Cuba
27 November – 2 December 2017

1. Hydrographic Office / Service: Maritime Authority Suriname

2. Surveys:

1. Surveys

Coverage of new surveys:

- In 2017 an indicative survey was conducted for the Coppename River. This was done for an assessment for full or partial survey. The national chart 2215 was outdated (data from 1970) and out of publication. Due to significant changes full survey is required in channel approach.

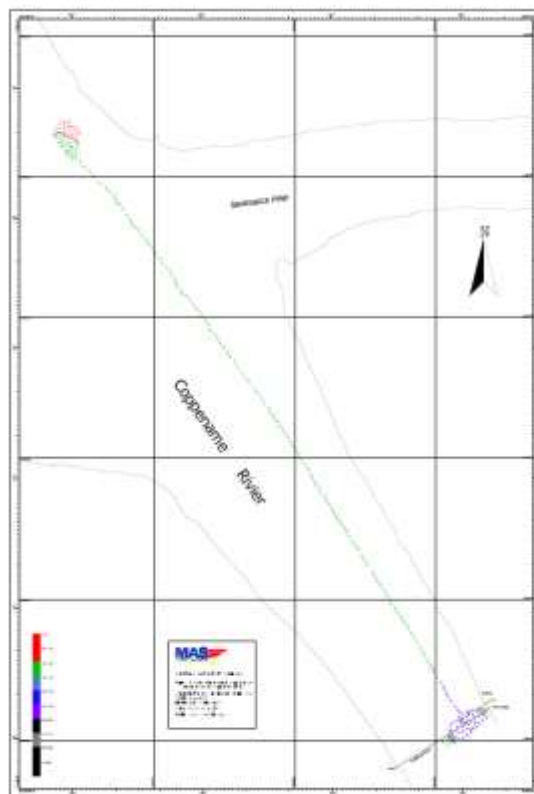


Figure 1 : Assessment of the Coppename River to fully survey or partial survey

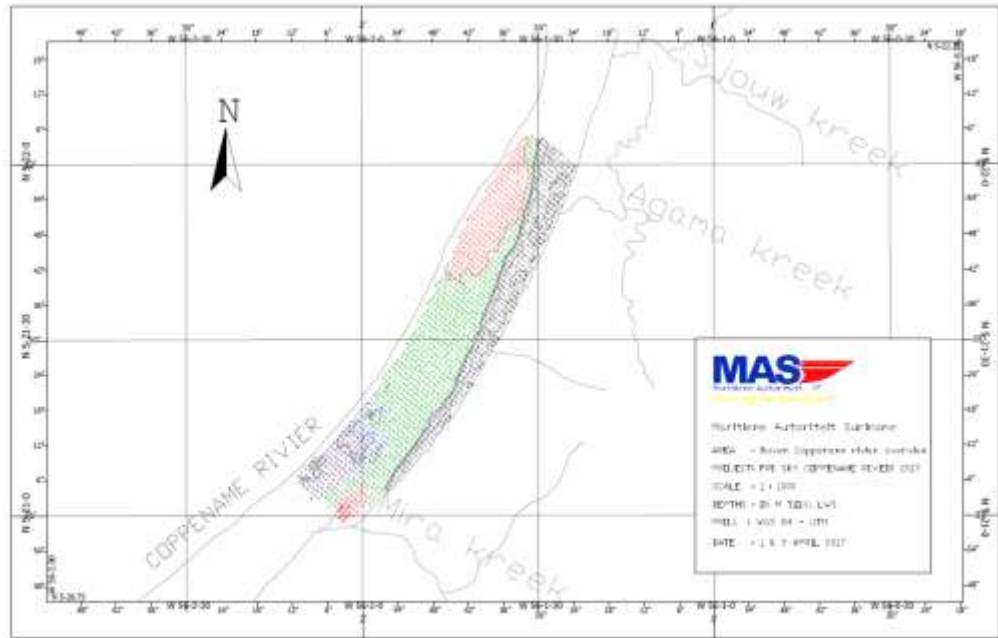


Figure 1 : Survey of parts of the Coppename River at critical parts

Re-surveys:

- Hydrographic surveys were conducted in the Commewijne/Cottica River at critical parts of the river.

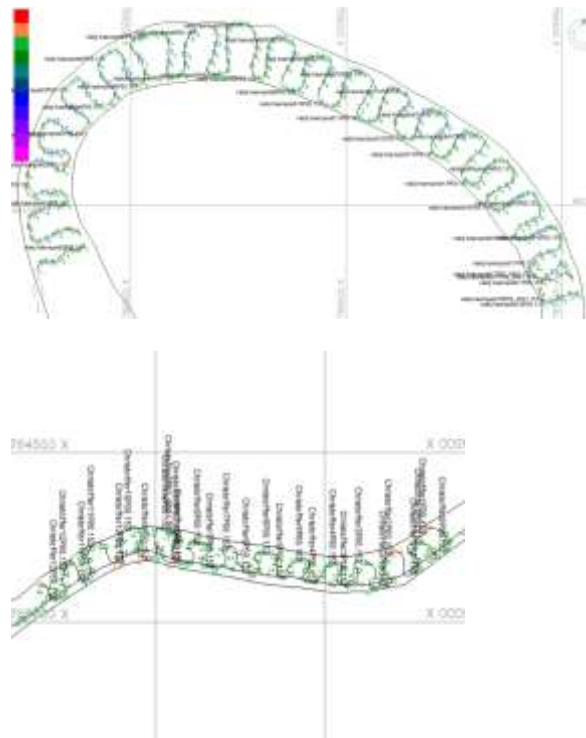


Figure2 : Resurvey of parts of the Commewijne River .

- Re-surveys were partially done for the monitoring of the navigation channel of the Suriname River from buoy S6 – D10.

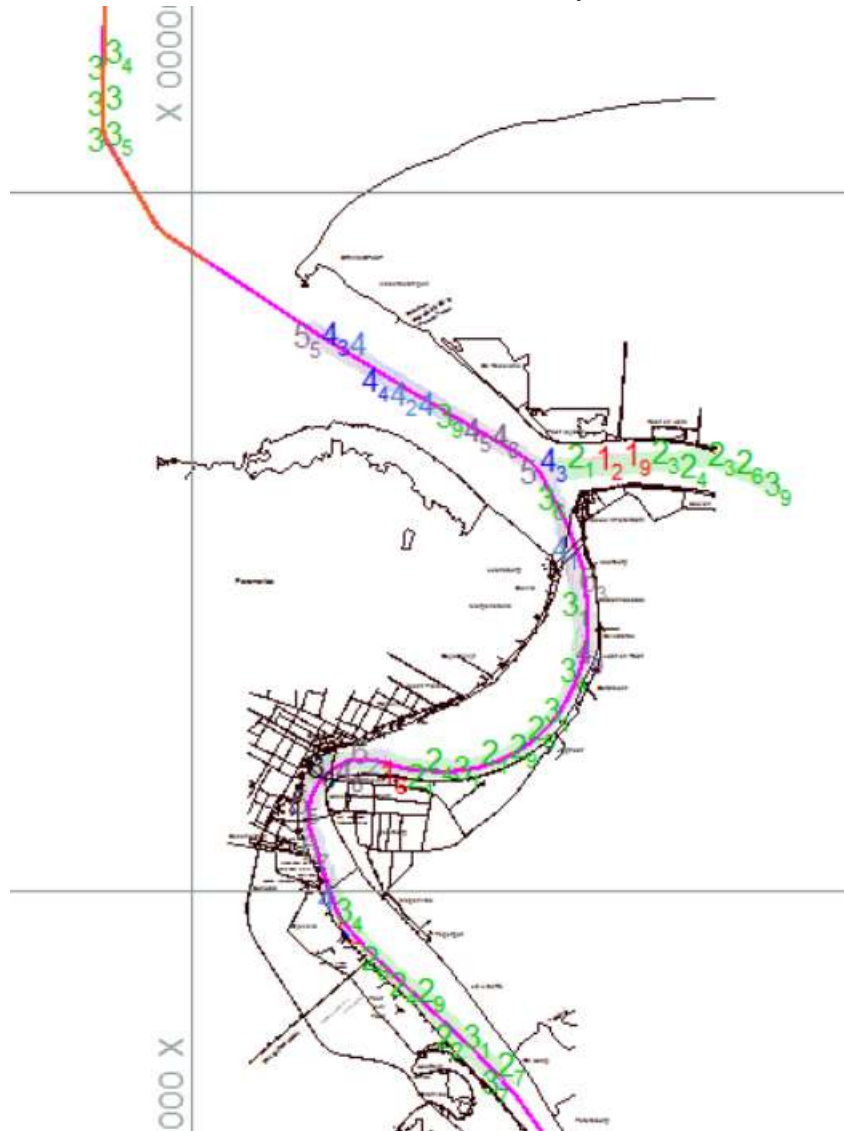


Figure3 : Resurvey of parts of the Suriname River .

- Detailed surveys of ISPS certified harbors

Other surveys:

The survey of the Canawaima Ferry route between Suriname and Guyana in the Corantijn River. Two buoys were proposed due to shifting of river islands.

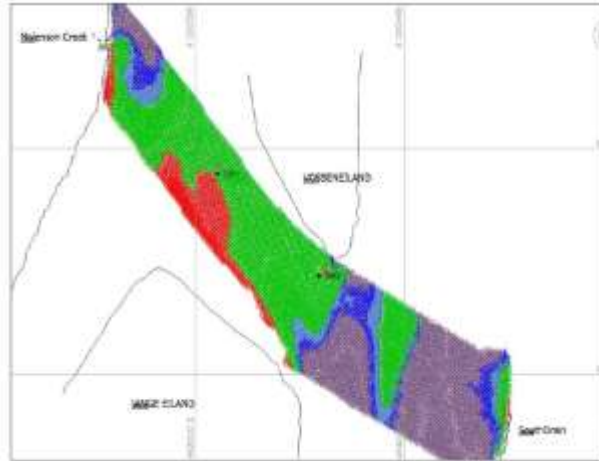


Figure 4 :
Survey Ferry crossing Guyana-
Suriname Corantijn River

3. New charts & updates:

ENC and Chart	Year	Status	Producer
Paper Chart 2766	2017	New edition	UKHO
ENC SR402766, SR5C2766, SR5D2766	2017	New Edition	UKHO
Paper chart 2764/INT4191	2017	New edition; ongoing	UKHO/MAS
Paper chart 2219	2017	Update	MAS

Planning 2017-2018

ENC and Chart	Year	Publication	Producer	Status
Paper Chart SR2218/GB2765 Suriname river	2018	Update	Suriname/ UKHO	New data available
ENC SR402218, SR52218A, en SR52218B –Suriname river	2017	Update	UKHO	
Paper Chart 2014 (Coast)	2017 -	New edition INT 4191; NC2764	UKHO/ Suriname	Proposal submitted to MICC /IRCC. Compilation started.
ENC SR302014(Coast)	2017	Update	UKHO	
Paper Chart 2017 (coast)	April 2018	New edition NC2763	UKHO	Planning
ENC 2219 <u>Commewijne</u> river	2017	New edition	Suriname	Planning
Paper Chart 2219 <u>Commewijne</u> river	2017	Update	Suriname	Ongoing
New Paper Chart 2220 (Cottica river bends lager scale charts)	2018	New edition	Suriname	Planning
Paper Chart 2766 <u>Corantijn –Nickerie</u> river	2017	New edition NC 2766	UKHO	Published
ENC SR402766, SR5C2766, SR5D2766 <u>Corantijn –Nickerie</u> river	2017	New edition	UKHO	Published
ENC ISPS ports (band 6)	2018	New edition	Suriname	Planning

ENC Distribution method: IC-ENC and UKHO

4. New publications & updates:

New publications:

- Tide Table 2018 for Suriname. Tide tables are released for each year
- The release of Shipping Notices for the nautical accessibility of ISPS certified ports and rivers .Notices are updated after detail surveys of the ports.

Means of delivery: the Shipping Notices of the ISPS Ports are published through the website of the Maritime Authority Suriname and are also sent to all shipping agents per email.

5. MSI

Existing infrastructure for transmission

Partial radio warnings for coastal area through VTC .

NtM published in local papers and website, emailed to mariners.

NtM submitted to the NAV Area coordinator

Currently

Drafting of a plan for infrastructure in accordance with GMDSS Master Plan

Fase 1: VHF coverage Area A1 :currently VHF channel 16 communication for 20NM in approaches to ports

SERVICE	Yes	No	Partial
Local Warnings	X (NtM)		
Coastal Warnings			X
Port Information	X		
NAVAREA Warning	X		
Master Plan			X
Area A1			X
Area A2		X	
Area A3		X	
NAVTEX	X		
SafetyNET		X	

6. C-55

Status of hydrographic survey of all navigable waters, including internal waters, out to the limits of the EEZ: (Please refer to the guidance given in the introductory text “Analysis of the Status of Surveys”.)

Survey coverage, where:

A = percentage which is adequately surveyed.

B = percentage which requires re-survey at larger scale or to modern standards.

C = percentage which has never been systematically surveyed.

	A	B	C
Depths < 200m	90	52	10
Depths > 200m	90		10

Amplifying information:

Special national circumstances which influence the statistical break-down above (e.g. geographical factors such as narrow continental shelf or fringing reefs, or constraints such as areas of unstable seabed which require a routine resurvey program):

The constant flow of sediments from the Amazon River creates migrating mud banks along the coast which move in westward direction. These banks have great impact on the river systems; therefore have impact on the approaches to the ports.

7. Capacity Building

Training offered:

IALA -Level1 Aids to navigation manager course, October to November 2018, Suriname

Demand for Capacity Building:

- Hydrography cat. B
- Nautical Cartography cat B

Required Internship:

- Tidal analysis
- Side Scan Sonar image interpretation

Training received:

- IALA -Level1 Aids to navigation manager course, May to June 2017, Suriname .
- KOICA- Training for Ocean Observation and Hydrographic Surveying (Policy-maker)
September 2017, Seongnam & Busan, Republic of Korea

8. Oceanographic activities

Seismic surveys indicated in the figure 4- coast of Suriname

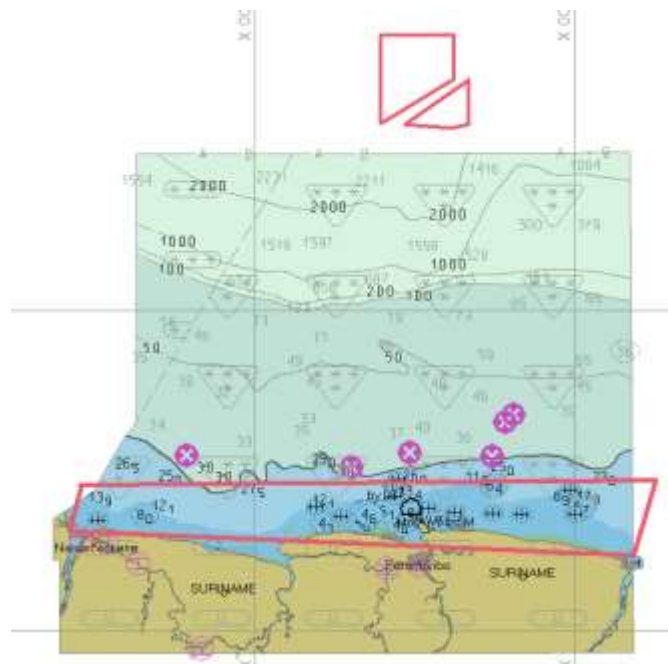


Figure 5: Seismic survey area – Coast of Surina

9. Other activities



Establishment Suriname Aton Academy

The Maritime Authority Suriname is the national authority that is legally responsible for the provision, maintenance and operation of marine Aids to Navigation in Suriname.

As National member of the International Association of Marine Aids to Navigation and Lighthouse Authorities (IALA), the Maritime Authority Suriname established the **Suriname Aton Academy (S.A.A.)**

A Memorandum of Understanding was signed between **the Maritime Authority Suriname and the IALA World Wide Academy** to provide the Suriname Aton Academy with the necessary technical assistance for delivering the Level 1 Aids to Navigation Manager Course.

Accreditation

The Suriname Aton Academy is very unique because it is the only Training Organization for North and South America accredited to deliver Aids to Navigation training based on the IALA Recommendation E-141.





The Primary goals of the Suriname Aton Academy are:

- facilitate **education and training** for personnel with responsibility for Aids to Navigation particularly in key target regions;
- deliver **Level 1 Aids to Navigation Manager Courses** when appropriate;
- develop and maintain an **Academy alumni association** and promote IALA activities through that alumni association;
- provide assistance to **enhance the knowledge and expertise** of personnel with responsibility for Aids to Navigation, at both the managerial and technician levels, so as to achieve a resilient competence in a defined target region.

Level 1 Aids to Navigation Manager Course objectives

The course aims to enable participants to gain an international recognized Aid to Navigation Certificate.

The competencies to be gained include:

Module 1: International Organizations and Law of the Sea;

Module 2A: nautical knowledge;

Module 2B: position; navigation; timing and meteorology;

Module 3A: provision, design and management of Aids to Navigation;

Module 3B: maintenance contracts, the marine environment, historic lighthouses and human resource issues;

Module 4: the technical functions related to both visual and radio Aids to Navigation including e-navigation and Vessel Traffic Services;

Module 5: power supplies used for Aids to Navigation.

Includes elements of the SOLAS V Regulations

- 4 -Navigational Warnings: WWNWS
- 9 – Hydrographic Services
- 10 – Ships Routeing
- 11 – Ships Reporting Systems
- 12 – Vessel Traffic Services
- 13 – Aids to Navigation Services
- 19-2.4 – AIS

Countries that expressed interest :

Mexico, Columbia, Belize ,Argentina ,Guatemala, Guyana, Trinidad& Tobago, St. Kitts & Nevis, Venezuela, Barbados and Suriname.

Difficulties encountered: Availability of resources and language barrier

Participants for the manager course 7 : Belize ,Argentina ,Guatemala, Guyana
St. Kitts & Nevis, Barbados and Suriname





Competence of the Aids to navigation manager

The Level 1 Aids to Navigation Manager Course is based on IALA Recommendation E-141. After having demonstrated the required level of competence by passing all the **modular examinations** and **other assessments** required, the participants will be awarded an **IALA Aids to Navigation Level 1 Certificate**.

This will permit successful students to operate as a manager with an Aids to Navigation service provider approved by the Competent Authority within their Country.

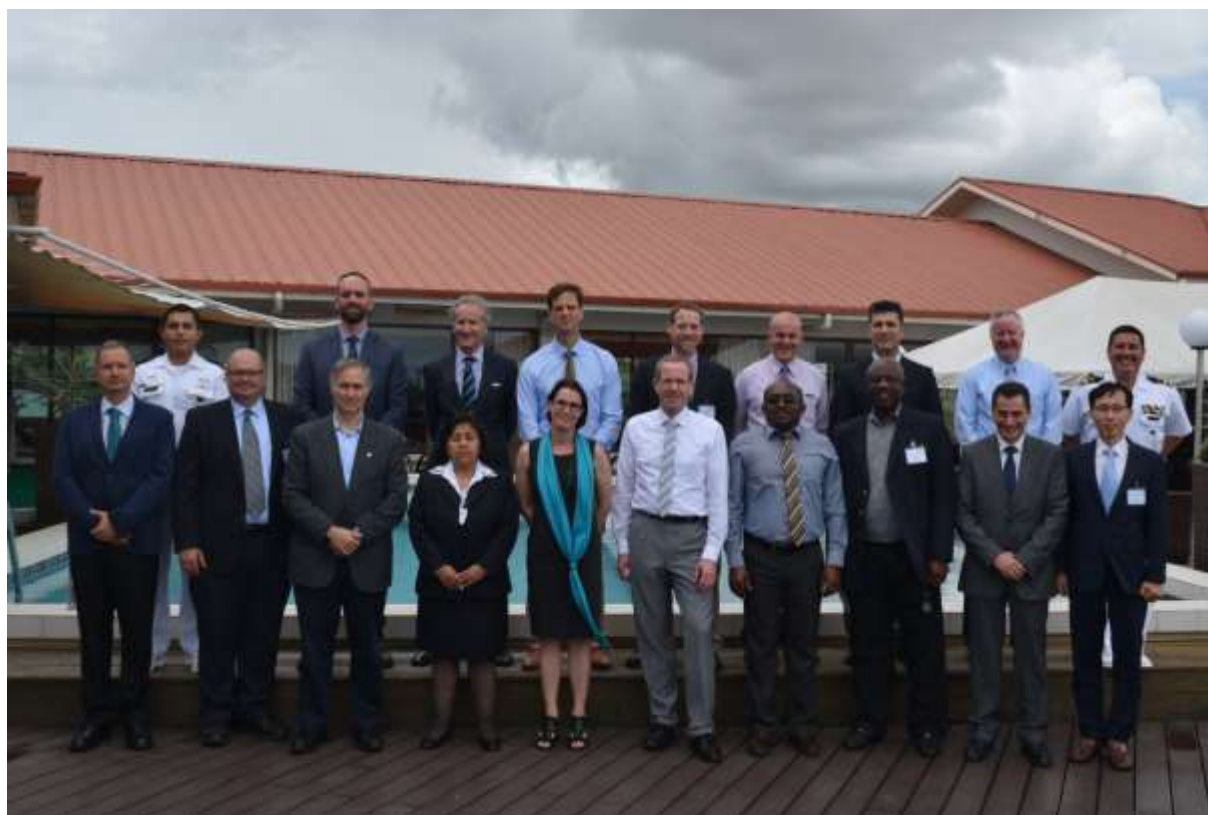
Aids to Navigation managers and engineers are responsible to the Competent Authority for providing an appropriate quantity and quality of Aids to Navigation services which as a minimum meets the obligations set out in the International Convention for the Safety of Life at Sea, Chapter V, Regulation 13 and other mandatory instruments issued by the International Maritime Organization



- Hosting of the IHO – 9th IRCC meeting from June 12 -14 ,2017 in Suriname



- Hosting of the IHO –15th CBSC meeting from June 7-9 ,2017 in Suriname



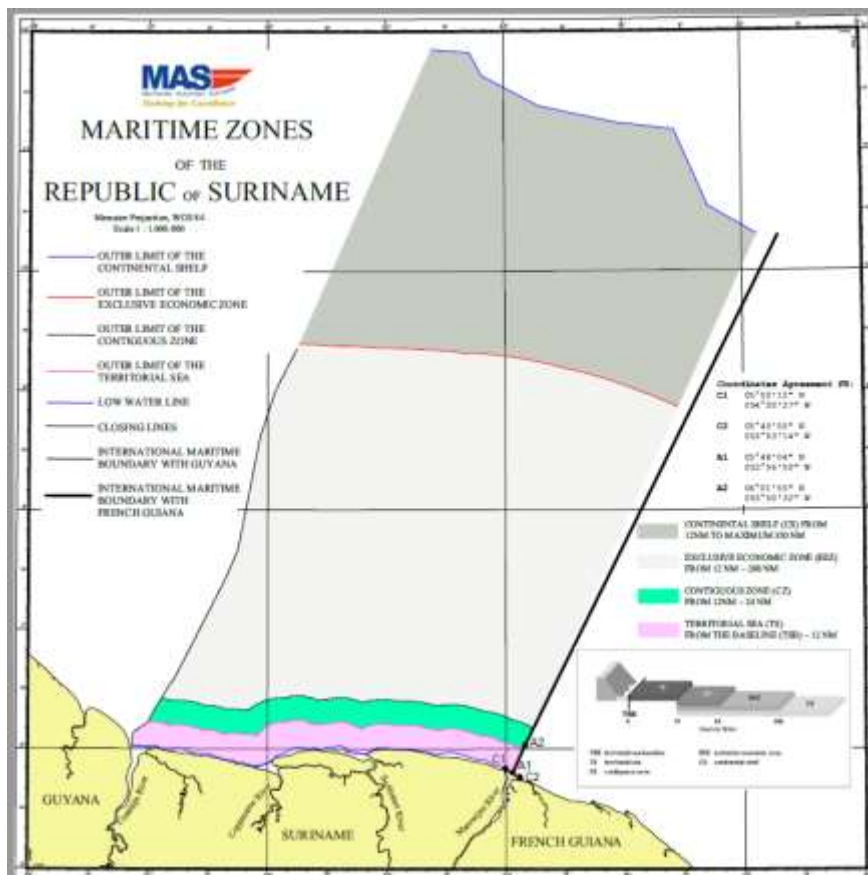
- UKHO Technical 21st February visit regarding chart production



- ISO 9001:2015 certification obtained for 3 years



- National legislation on Maritime zones completed
- Maritime boundary with France completed



- World Hydrography Day



- **Participation in IHO Working Groups; MEIP , MICC.**
- **Coordinator of IMSAS Working group Suriname**
- **National Working groups:**
 - National Climate Outlook Forum (NCOF)
 - MAS participated in the National Post-deforestation 2000 – 2009 and 2000 – 2015 Land Use Land Cover Maps project organized by the Forest Cover Monitoring Unit of the Foundation for Forest Management and Production Control (SBB) as an initiative of the Amazon Cooperation Treaty Organization (ACTO).
 - **Global Climate Change Alliance (GCCA)+ Suriname Climate Change Adaptation project office and activities Government of Suriname, the European Union and the UNDP**

Increase of existing information and knowledge related to the effects of climate variability and change, including the development of targeted data collection, analysis and dissemination in related sectors of water management, hydro and meteorological services.

Strengthening of human capacity and systems for management and conservation of Mangroves. Reducing the negative effects of human action on mangroves; supporting enabling conditions to stimulate mangrove regeneration; and adaptation in the agriculture subsector.
 - River council for maritime related issues for the boundary river Marowijne