



NGA Hurricane Irma / Maria Support

Meso American – Caribbean Hydrographic Commission (MACHC)

Jim Rogers
SFHN Technical Executive
NGA Maritime Safety Office
James.E.Rogers@nga.mil

02 DEC 2017



NGA
NATIONAL GEOSPATIAL-INTELLIGENCE AGENCY

Hurricane Irma & Hurricane Maria

- Hurricane Irma and Hurricane Maria affected the Eastern and Central Caribbean Sea region as well as the Eastern area of North America.
- The region was affected during the period of 30 AUG 2017 – 30 SEP 2017 by both Hurricanes.
- Hurricane Irma and Hurricane Maria brought Hurricane force winds, heavy rains, and flooding throughout the region.



NGA
NATIONAL GEOSPATIAL-INTELLIGENCE AGENCY

NGA Support to Hurricane Irma / Maria

- NGA Website created



NGA
NATIONAL GEOSPATIAL-INTELLIGENCE AGENCY

Product Locations

- Product Location Map

The screenshot displays the NGA Hurricane Maria Support - Caribbean web application. The interface is divided into a sidebar on the left and a main map area on the right. The sidebar contains a 'PRODUCTS' section with a heading 'Product and Data Listing' and a sub-section 'Product Location Map'. The main map area is titled 'Hurricane Maria Product Locations' and features a search bar, a legend, and a map of the Caribbean region. The legend indicates that orange icons represent 'General Graphic' products and black icons represent 'Image Graphic' products. The map shows the Caribbean Sea with various islands labeled, including Puerto Rico, St. John's, Guadeloupe, and others. The application also includes a top navigation bar with tabs for 'NGA Damage Assessments', 'Products', 'Open Data', 'MGCP Vector Data', 'PIXIA Pre/Post Imagery Comparison Tool', and 'FEMA-Urban Search & Rescue: Puerto Rico / USVI'.



NGA
NATIONAL GEOSPATIAL-INTELLIGENCE AGENCY

Products

- Products

Hurricane Irma Support



NGA Damage Assessments & Products

Product Gallery

PIXIA Pre/Post Imagery Comparison Tool



Product Gallery

Sort by



Layout



Sign In



Hurricane Irma Products

Group is used to gather products that are in product gallery app

Tags

Hurricane Irma Turks and Caicos



20170910 (Hurricane Irma) Turks and Caicos - South Caicos Preliminary Damage Assessment

Image

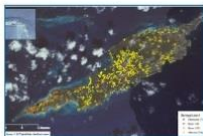
Hurricane Irma damage assessments



20170910 (Hurricane Irma) Turks and Caicos Damage Assessment

PDF

Turks and Caicos hurricane Irma Damage assessment.



20170910 (Hurricane Irma) Anguilla Damage Assessment

PDF

Hurricane Irma Damage assessment.

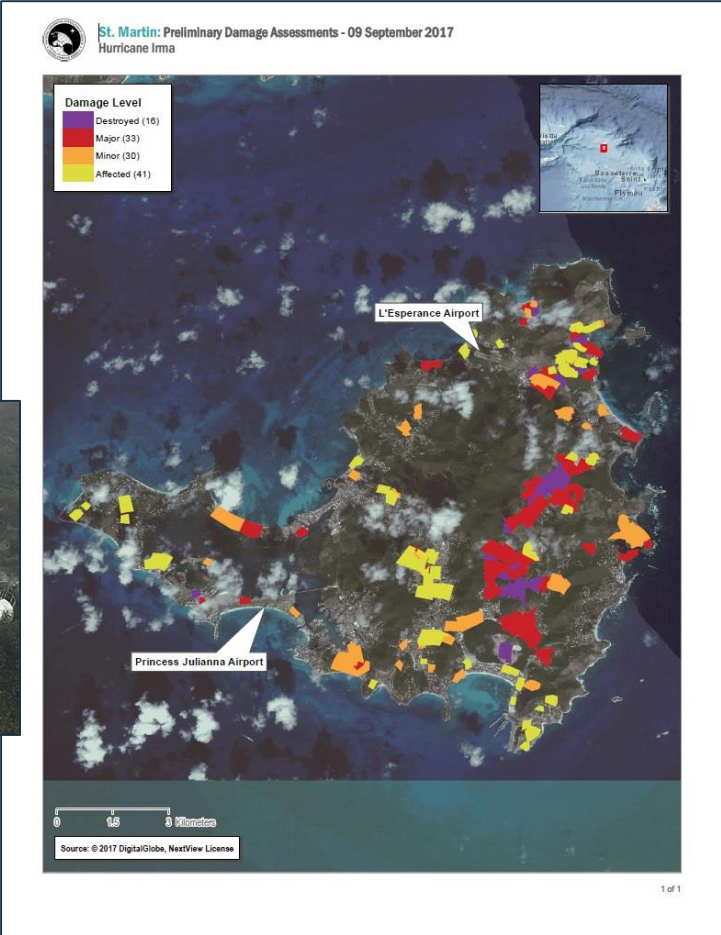


NGA

NATIONAL GEOSPATIAL-INTELLIGENCE AGENCY

Products

- Damage Assessment



NGA
NATIONAL GEOSPATIAL-INTELLIGENCE AGENCY

Products

- Damage Assessment

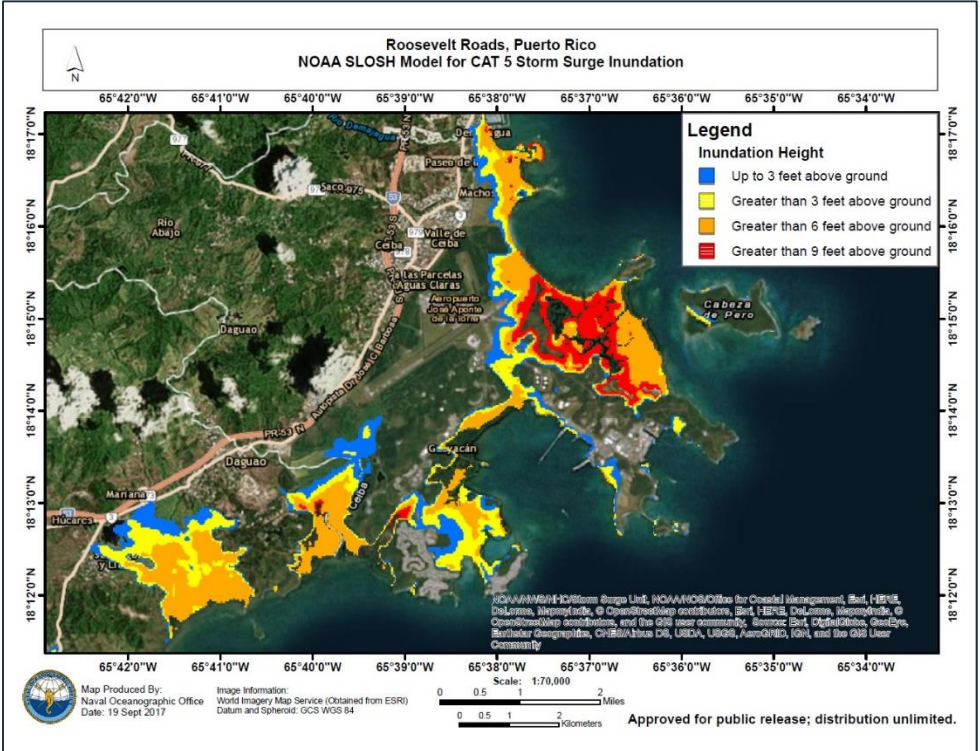
The screenshot displays the NGA Hurricane Maria Support - Caribbean web application. The main interface includes a navigation menu with options like 'NGA Damage Assessments', 'Products', 'Open Data', 'MCCP Vector Data', 'PIXIA Pre/Post Imagery Comparison Tool', and 'FEMA-Urban Search & Rescue'. The central map shows the island of Dominica with numerous colored markers (yellow, orange, red, purple) indicating damage assessment points. A 'Layer List' on the left shows various layers such as 'Dominica Damage Assessments - Building Damage Level North', 'World Boundaries and Places', and 'World Imagery'. Two pop-up windows are overlaid on the map, providing detailed information for a specific location (20170923 - Hurricane Maria Dominica East Roads/Bridges/Structures/Status). The top window shows 'STRUCTURE TYPE Road', 'OBSERVABLE Debris Obstruction', 'DAMAGE LEVEL Impassable', 'LATITUDE 152441N', 'LONGITUDE 0611506W', 'LAT_D 15.41', and 'LONG_D -61.25'. The bottom window shows 'STRUCTURE TYPE Road', 'OBSERVABLE Debris Obstruction', 'DAMAGE LEVEL Impassable', 'LATITUDE 152441N', 'LONGITUDE 0611506W', 'LAT_D 15.41', and 'LONG_D -61.25'. Both windows include a 'Zoom to' link and a close button.



NGA
NATIONAL GEOSPATIAL-INTELLIGENCE AGENCY

Products

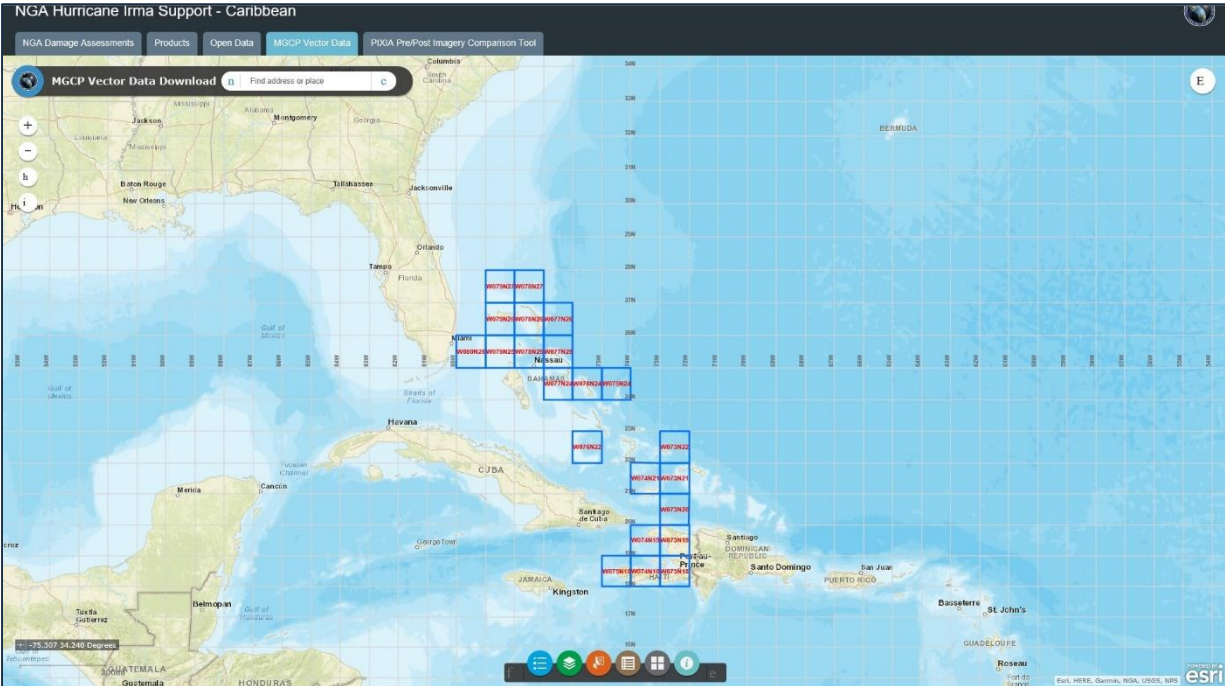
- Storm Surge Inundation



NGA
NATIONAL GEOSPATIAL-INTELLIGENCE AGENCY

Data

- MGCP Vector Data



NGA NATIONAL GEOSPATIAL-INTELLIGENCE AGENCY

Data

- Shapefile Data

NGA Hurricane Irma Support - Caribbean

NGA Damage Assessments Products Open Data MGCP Vector Data PIXIA Pre/Post Imagery Comparison Tool

Product and Data Gallery

PRODUCTS

NGA support to Hurricane Irma humanitarian assistance efforts.

Product and Data Listing

- Select an item to the right to download data or a graphic.

To see where these items reference on a map, move to the Product Location Map below and view an area and download a product that may be available.

Product Location Map

Locate your area and select an icon to download the product produced.

Hurricane Irma Products

Tags

Hurricane Anguilla Antigua Bahamas Barbuda Florida Hurricane Hurricane Irma Imma Power Products Providenciales Saint Martin South Caicos St. Martin Turks and Caicos

Shapefile Download .zip: 20170909 Saint Martin Preliminary Damage Assessment
Shapefile
(NGA Product Download) Hurricane Irma Damage Assessment

Shapefile Download .zip: 20170911 Anguilla Final Damage Assessment
Shapefile
(NGA Product Download) Hurricane Irma Damage Assessment

Shapefile Download .zip: 20170911 Turks and Caicos Final Damage Assessments
Shapefile
(NGA Product Download) Hurricane Irma Damage Assessments

Shapefile Download .zip: 20170912 Bahamas Impassable Routes
Shapefile
(NGA Product Download) Hurricane Irma Damage Assessment

Shapefile Download .zip: 20170914 Bahamas Preliminary Damage Assessment
Shapefile
(NGA Product Download) Hurricane Irma Damage Assessment

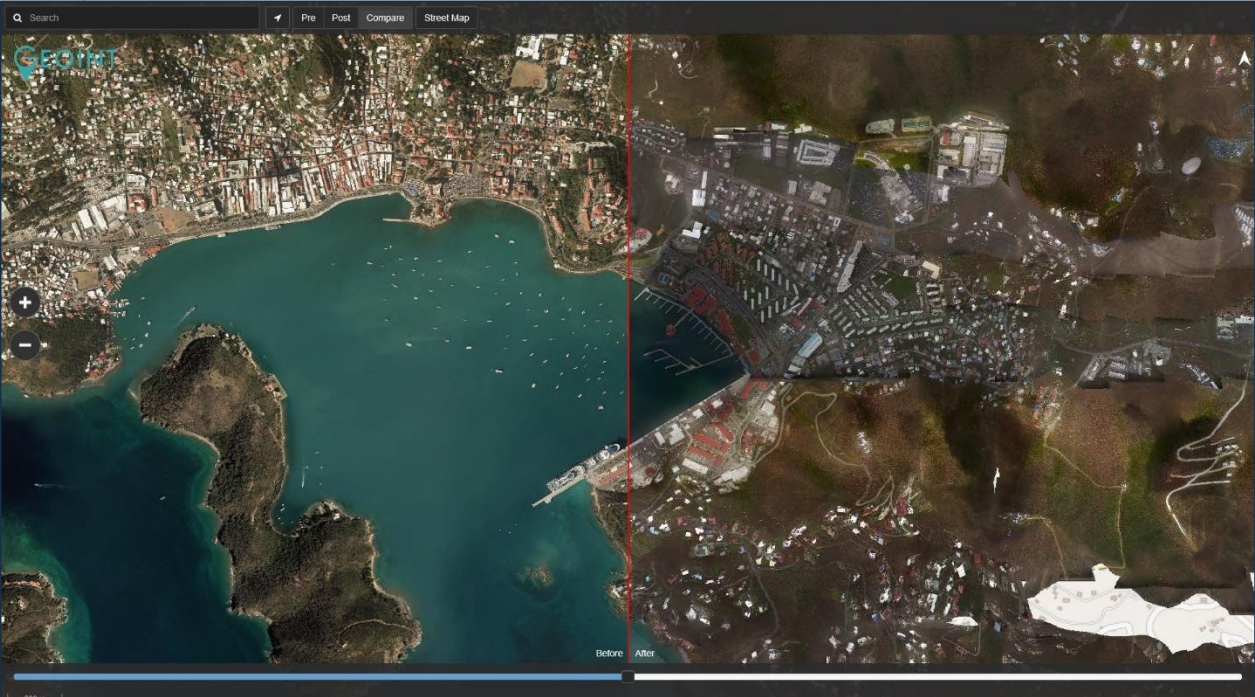
Shapefiles Download .zip: All Layers - Hurricane Irma Preliminary and Final Damage Assessments
Shapefile
(NGA Product Download) Hurricane Irma Damage Assessments Download



NGA
NATIONAL GEOSPATIAL-INTELLIGENCE AGENCY

Imagery

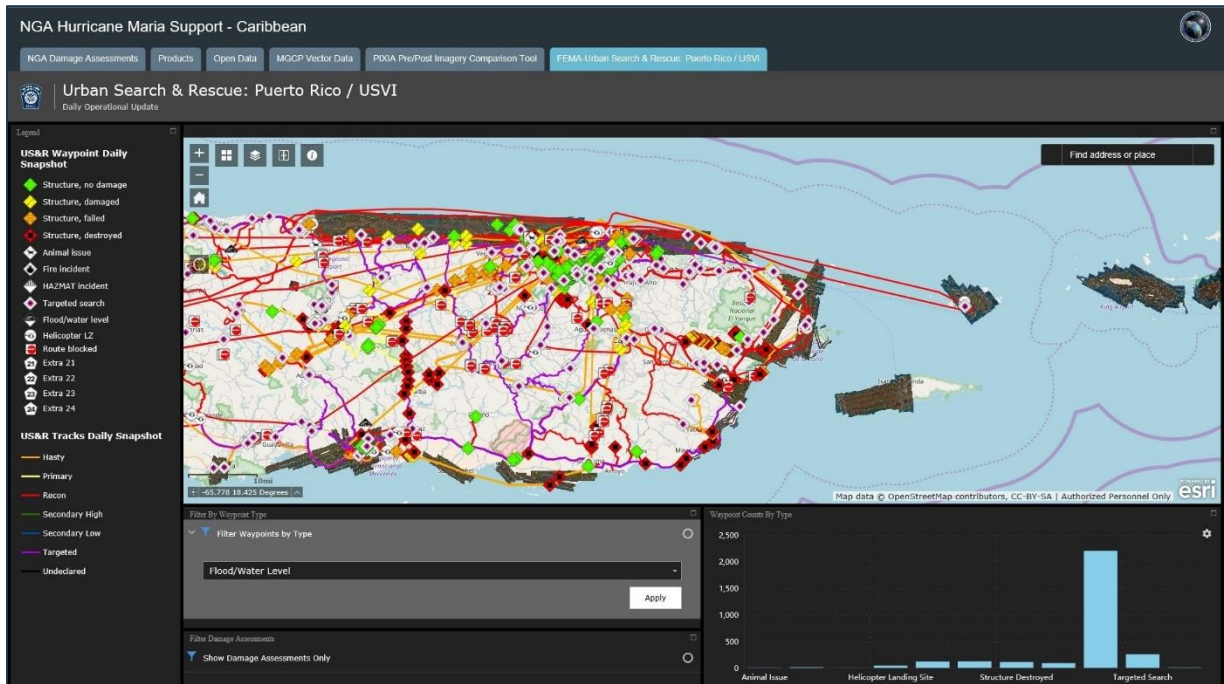
- Imagery compare tool



NGA
NATIONAL GEOSPATIAL-INTELLIGENCE AGENCY

Search & Rescue

- Operational Update



NGA
NATIONAL GEOSPATIAL-INTELLIGENCE AGENCY

Humanitarian Aid

- The NGA Hurricane Irma and Hurricane Maria websites supported combined US efforts during the crisis.
- The website also supported the efforts of the other international partners with their humanitarian aid as well.
- The various products, maps, and data helped responders make more informed decisions.



NGA
NATIONAL GEOSPATIAL-INTELLIGENCE AGENCY



NGA NATIONAL GEOSPATIAL-INTELLIGENCE AGENCY

NGA.mil

