



National Report Suriname 2019

**20th MESO-AMERICAN – CARIBBEAN SEA HYDROGRAPHIC
COMMISSION MEETING**

Santo Domingo, Dominican Republic, 2 December November – 6 December 2019

Maritime Authority Suriname

November 10, 2019

Executive Summary

Contents

National Report Suriname 2019	1
20th MESO-AMERICAN – CARIBBEAN SEA HYDROGRAPHIC COMMISSION MEETING	1
Executive Summary	2
1. Hydrographic Office/Service	3
2. Surveys.....	3
3. New charts & updates:	6
4. New publications & updates:	8
5. MSI	8
6. C-55	9
7. Capacity Building Offer of and/or demand for Capacity Building.....	9
8. Oceanographic activities	13
9. Other activities	15

1. Hydrographic Office/Service

Maritime Authority Suriname aims for the following:

- A safe and efficient transfer securing sea-going vessel to and from Suriname in regards with international norms and rules accepted and in conformity with the treaties established by Suriname.
- Supervision of the compliance of legal requirements for shipping and maritime traffic.
- To be a recognized authority in both the national and international maritime field.
- Further professionalizing of the implementation of duties and making of proposals for the modernizing of the legislation.
- To undergo a culture change, which is focused on productivity and a professional working attitude.

Vision:

TO BE A PROFESSIONAL, COMMERCIAL ORIENTED, INNOVATIVE AND LEADING ORGANIZATION.
INITIATING AND FACILITATING MARITIME DEVELOPMENT

Mission Statement:

“ASSURING SAFE, SECURE, ENVIRONMENTALLY SOUND, EFFICIENT AND SUSTAINABLE SHIPPING”.

2. Surveys

- Coverage of new surveys: none
- Policy issues regarding the collection and use of crowd-sourced bathymetry:
 - all data collected in the offshore area are referenced at Mean Sea Level.
 - All data collected in the nearshore area are referenced at Low Water Spring.
 - Inland surveys are exclusively conducted by MAS and are referenced at Low Water Spring.
- Status of data collection:
 - Resurvey of the Suriname River from the entrance up to Paranam and the entrance of the Commewijne River to Alkmaar. Total length of Suriname river 50 nautical miles. See figure 1.
 - Special attention is given to the critical area in the entrance of the Suriname River between S6-S10. Due to the sedimentation, a monthly survey is done in this area for monitoring.

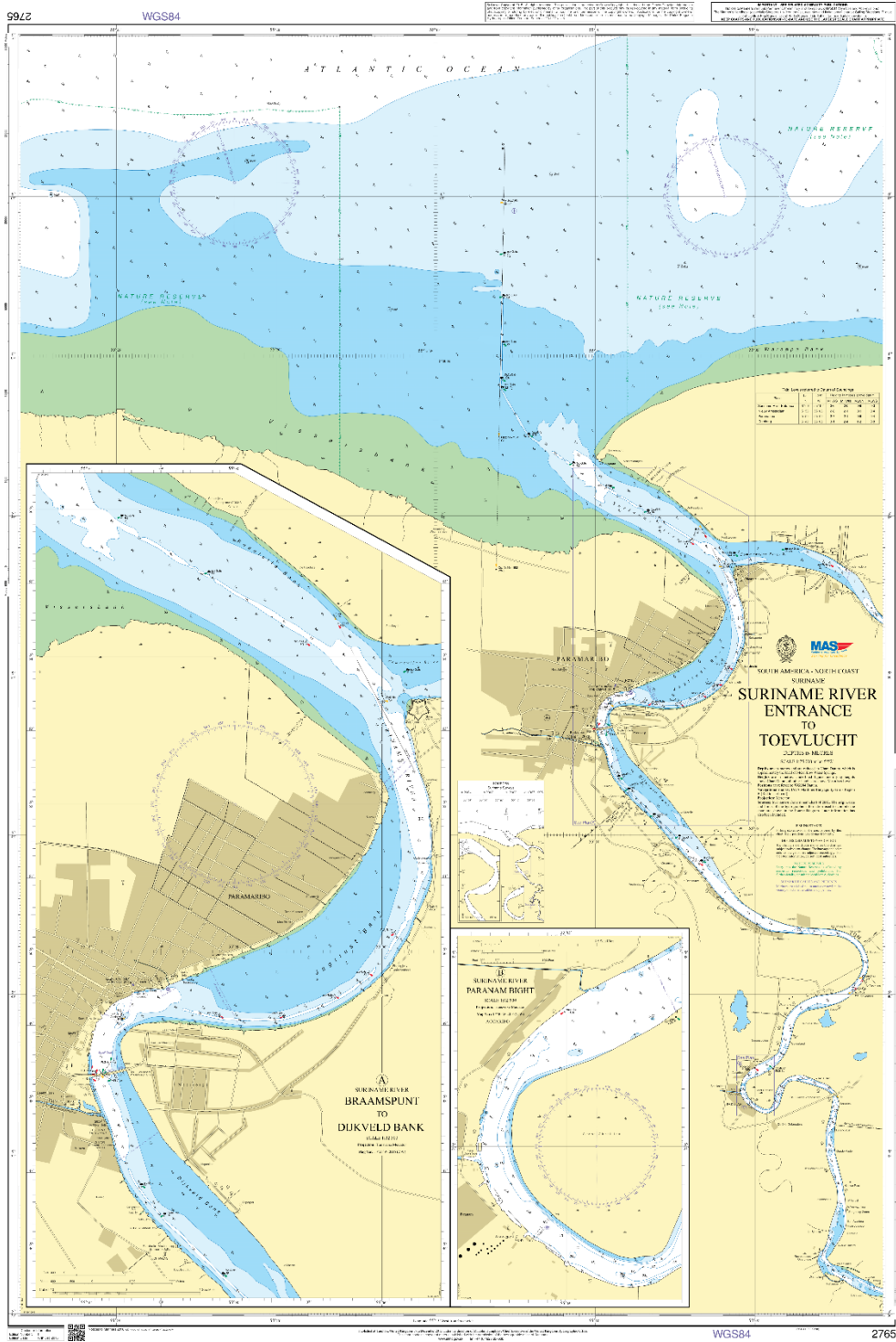


Figure1 : Chart 2765 of Suriname river indicated the survey area.

- New survey for port development southern part of Suriname river. See figure 2. Length of river part is 8km and the survey will be used to develop a new chart.

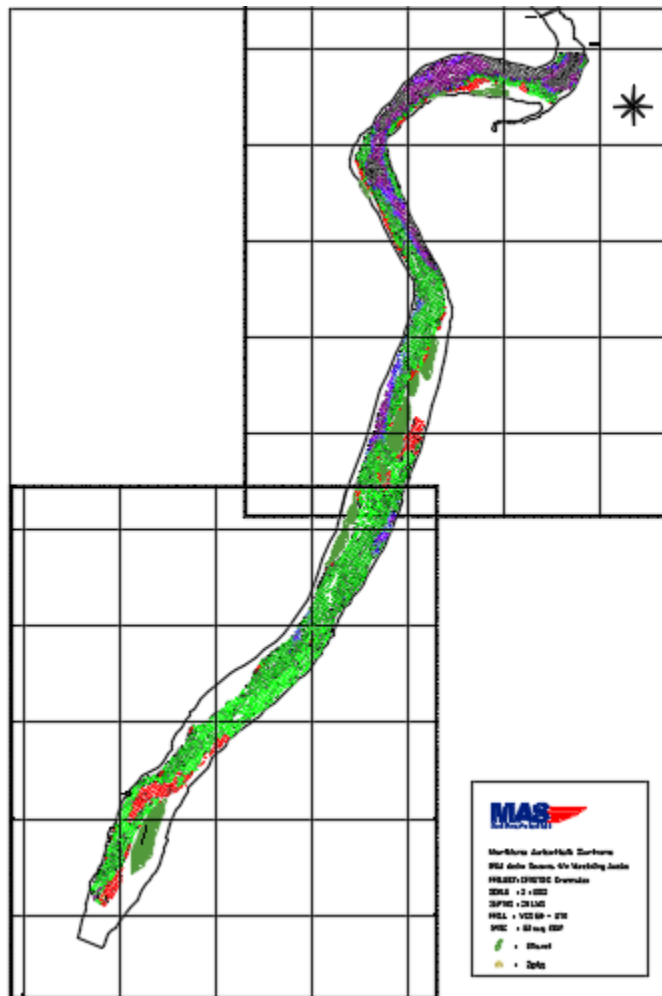


Figure 2: Survey of the Southern Suriname River 2019

- New equipment
Tide gauge network: the tide gauge network consists of six tide gauges All have been levelled by the Management-Institute Geographical Land Information System (MI-GLIS) and already in operation at Braamspunt, Paramaribo, Domburg, Baka Sroisi, South Drain and NW. Nickerie . Contains a dial-up system and maintenance with maintenance plan.



Figure 3 : Installation of OTT tide gauges with floating system



Figure 4 : Installed OTT RLS Radar Level Sensor

3. New charts & updates:

- ENC's, INT and paper charts:

Planning Paper Charts and ENC's

ENC and Chart	Year	Publication	Producer	Status
Paper Chart SR2218/GB2765	2020	Update	Suriname/ UKHO	New data available. Planning
ENC SR402218, SR52218A, en SR52218B	2020	Update	UKHO	New data available. Planning
Paper Chart 2014	2020	New edition	Suriname	Planning
Paper chart 2764/INT4191	April 2019	New Edition	Suriname/ UKHO	Finalized
ENC SR302014	End 2019 - 2020	Update	Suriname/ UKHO	Planning
Paper Chart 2017	End 2019 – 2020	New edition	Suriname/ UKHO	Planning. Working on draft specifications.
ENC 2219	2019	New edition	Suriname	Finalized
Paper Chart 2219	2019	Update	Suriname	Finalized
New Paper Chart 2220 (Cottica rivier bends lager scale charts)	2020	New edition	Suriname	On hold.
Paper Chart 2766	2020	Update	UKHO	New data required
ENC SR402766, SR5C2766, SR5D2766	2020	Update	UKHO	New data required
ENC ISPS ports	September 2019 - 2020	New edition	Suriname	Ongoing. 3 ENCS already compiled. Currently updating.

New Charts & updates

ENC and Chart	Year	Status	Producer
Paper chart 2764/INT4191	April 2019	New edition; Finalized	UKHO/MAS
Paper chart 2017	2019 - 2020	New Edition, planning	UKHO/MAS
ENC ISPS ports	2019 - 2020	New editions, ongoing	MAS

- ENC Distribution method: through IC-ENC and UKHO

4. New publications & updates:

- Tide Table 2020 for Suriname. Tide tables are released for each year.
- The release of Shipping Notices for the nautical accessibility of ISPS certified ports and rivers. Notices are updated after detail surveys of the ports.
- Means of delivery: The Shipping Notices of the ISPS Ports are published through the website of the Maritime Authority Suriname and are also sent to all shipping agents per email.

5. MSI

- Existing infrastructure for transmission:
Partial radio warnings for coastal area through VTC .
NtM published in local papers and website, emailed to mariners.
NtM submitted to the NAV Area coordinator
- New infrastructure in accordance with GMDSS Master Plan:
Currently a GMDSS Master Plan is still in concept. The organization responsible for the GMDSS is the Coast Guard of Suriname (newly established), Search and Rescue obligation are partially covered. The Coast Guard of Suriname of work in collaboration with Search and Rescue coordinator of the region.
MAS will assist the Coast Guard in developing the national GMDSS.
Problems encountered: lack of finance.

6. C-55

See Annex

7. Capacity Building Offer of and/or demand for Capacity Building

- **Training offered:**
 - IALA -Level 1 Aids to Navigation Manager Course 2019 offered by the Suriname Aton Academy (SAA) and IALA World Wide Academy (IALA WWA) was held from October 14th until November 6th in Paramaribo, Suriname. There were participants eight participants in total from Belize (1), Columbia (1), Philippines (4), Sint Vincent (1) and Suriname (1). The IALA -Level 1 Aids to Navigation Manager Course 2021 is planned for October – November 2021.



Figure 5: Participants IALA -Level 1 Aids to Navigation Manager Course 2019



Figure 6: Participants and Lecturers IALA -Level 1 Aids to Navigation Manager Course 2019



Figure 7: IALA Industrial member M-NAV Solutions , Lecturer Adam Hay



Figure 8: IALA WWA , Lecturer Kevin Gregory handing a certificate to participant of Sint Vincent.

Our gratitude to IALA , participants and lecturers.

- **Training received:**

- IALA Train the Trainer Course 2019 from July 7th – 11th 2019 Suriname Aton Academy, Suriname
- Standards of Competence for Category “B” Nautical Cartographers from July 29th – December 13th, 2019 Korea Hydrographic and Oceanographic Agency (KHOA) Busan, Korea
- APEC-Dredging technologies training course from June 17th -28th, 2019 Antwerp/Flanders Port Training Centre
- The 4th IC-ENC Technical Conference from 22nd -24th October 2019 held Panama City, Panama.
- IHO – NIPPON FOUNDATION ALUMNI SEMINAR 29th -31st October 2019, Singapore

- **Training needed:**
 - Demand for Capacity Building:
 - Hydrography cat. A
 - Required Internship:
 - Tidal analysis
 - Side Scan Sonar image interpretation

- **Status of national projects.**
 - North Brazil Shelf Large Marine Ecosystem (NBS LME)Mangroves (GEF IW-6) project: "Setting the foundations for zero net loss of the mangroves that underpin human wellbeing in the North Brazil Shelf Large Marine Ecosystem" The main aim of the is to help establish a shared and multi-national process for Integrated Coastal Zone Management in the NBS.
Project 'Promoting Integrated and Participatory Ocean Governance in Guyana and Suriname: The Eastern Gate to the Caribbean" is a four-year project funded by the EU covering the coastal and marine areas of Suriname and Guyana. the project aims to significantly enhance the governance and protection of marine and coastal resources of Guyana and Suriname through collaborative processes with all ocean stakeholders, improve knowledge of the coastal and marine environment, enhanced capacity of key stakeholders and informed marine spatial management.

- **Status of bilateral projects.**
 - MoU DNH finalized
 - MoU IC-ENC finalized
 - MoU UKHO finalized
 - MoU SHOM finalized
 - MoU Universiteit Utrecht – Faculteit Geowetenschappen, Nederland (UU-GEO) inprocess with objecties;
 1. Guarantee the safe and efficient passage of sea-going vessels to and from Suriname based on internationally accepted standards and rules and in accordance with the conventions ratified by Suriname;
 2. Pursue a proactive policy and innovation in the maritime sector and incorporate them in the strategic plan through cooperation.
plays an increasingly important role nationally and internationally and is of great importance for the economy of Suriname. Developments in the world are constantly making higher demands on safe, secure and environmentally friendly waterways and shipping.
 3. contribution to the Social, Social and Economic developments of Suriname through projects, scientific research, technological developments, training and education;

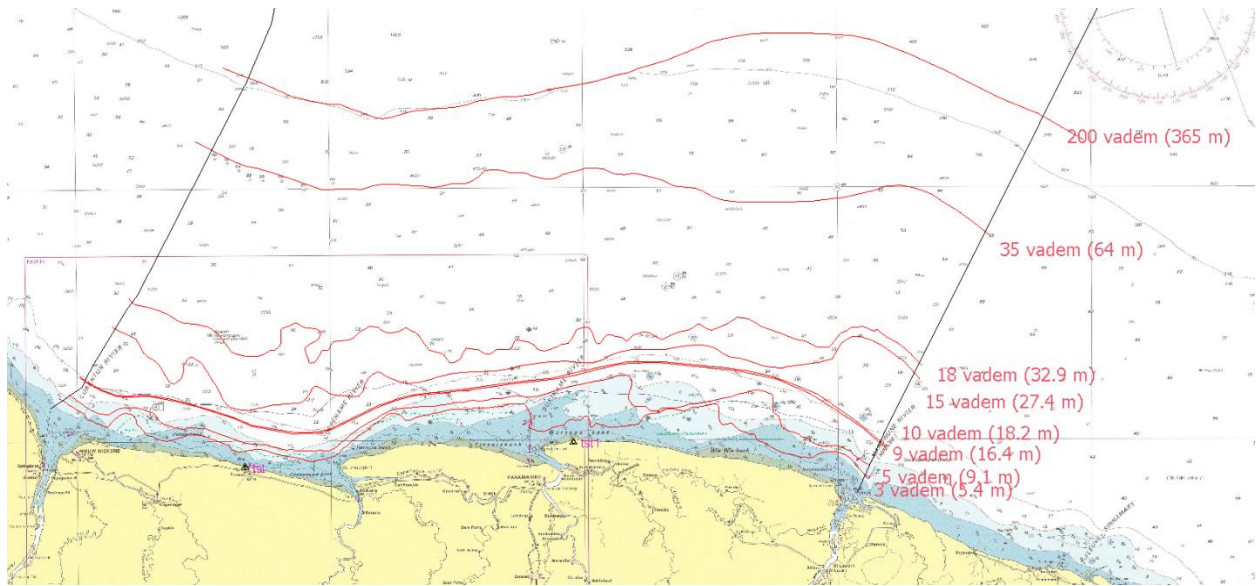


Figure 9: Fishing zones of Suriname

9. Other activities

- **ISO audit**

ISO audit was held in October 2019. No nonconformities found and MAS and MAS maintain its certification of three years.



Figure 10: Auditing in process at the Nautical Management (Hydrographic)department)

- A **'Maritime Open Day'** is planned for November 15th, 2019 in regard of World IMO Day, World Hydrography Day and Seafarers Day. Schools and others interested in MAS are invited to learn more in regard of Hydrography and maritime safety aspects. The participating institutes will be MAS, the Maritime Logistics School, Maritime Police, WIMAC, Ports Facilities, Shipping Agents and the Coast Guard of Suriname.

Uitnodiging Maritieme Opendag

In verband met de jaarlijkse herdenking wereldwijd van Wereld Hydrografie Dag, Wereld Maritieme Dag, Wereld Mariene Vaarwegmarkeringen Dag en Dag der Zeevarenden organiseert de MAS in samenwerking met Havenbeheer Suriname, VSH United, DP World Paramaribo, Kustwacht, WIMAC, de Marine, de Maritieme Politie, en het Surinaams Maritiem Instituut een tweedaagse opendag voor de Surinaamse gemeenschap. Het doel is om de bezoekers te informeren over de werkzaamheden en de plaats die de organisaties innemen binnen de maritieme sector.

U wordt uitgenodigd de opendagen te bezoeken.

Datum: vrijdag 15 november 2019
Tijd: 08:30 u - 15:00 u
zaterdag 16 november 2019
08:30 u - 13:00 u

Plaats: MAS Complex (Cornelis Jongbawstraat 2)



Figure 11: Invitation for Maritime Open Day

- MSDI:
 - a) Data have been collected. Hydrographic layers are being prepared. A Geospatial Framework is now in development with the Management Institute Geographical Land Information System (MI-GLIS).
Anticipating on the national MSDI, the MAS has already started to collect and process the maritime information in Arc GIS software.

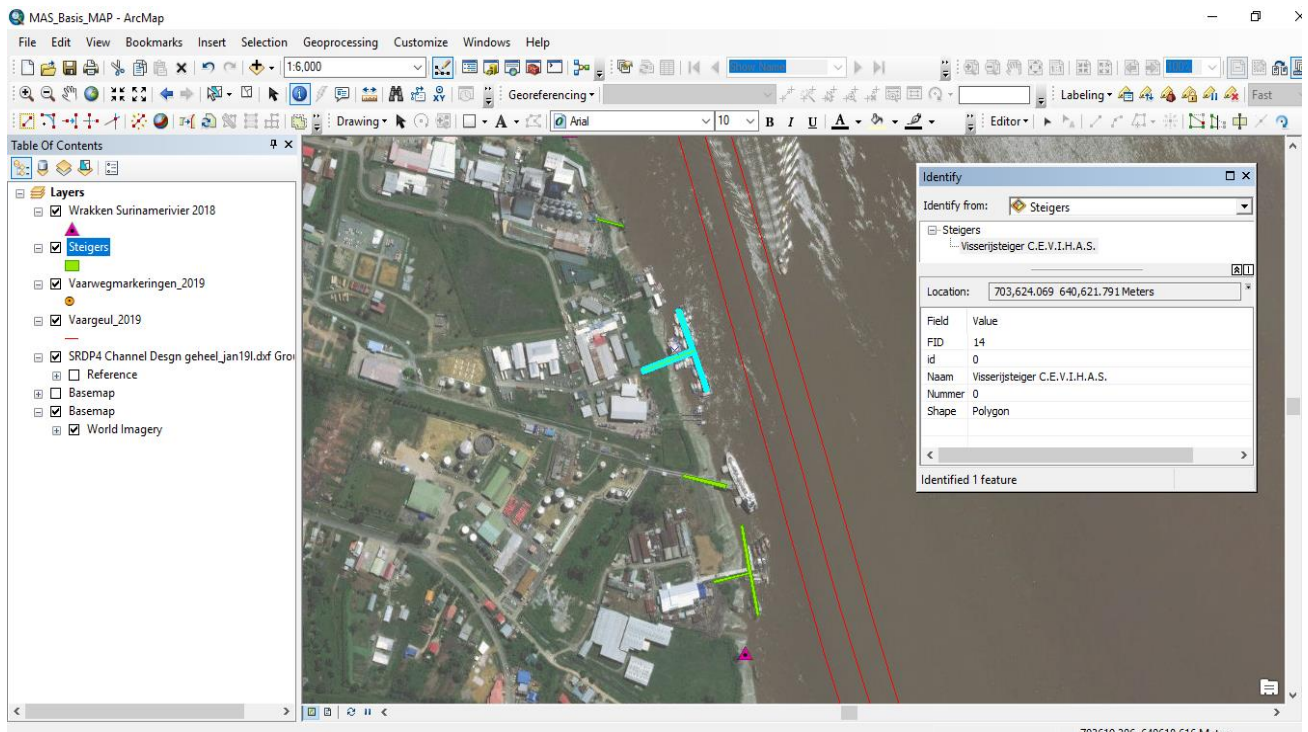


Figure 12: Suriname Maritime information in ARC GIS

- b) WWF Guianas, in collaboration with Nature Management and Green Heritage Fund Suriname, has been implementing an EU-funded project called "Promoting Integrated and Participative Management of the Ocean in Guyana and Suriname: the Eastern Gateway to the Caribbean." The project aims to improve the management and protection of the natural resources of the sea and coast of Guyana and Suriname through collaborative processes with all stakeholders of the marine area. Through the participatory development of a three-dimensional model of the coastal and marine area of Suriname, an equivalent, open and collaborative marine spatial planning process has been initiated. In recent months, stakeholders, including fishermen from different companies and fishing communities, have given their input to come up with a 3-D (three-dimensional) chart with fisheries-related information. The information will be included in de MSDI .



Figure 13: 3-D (three-dimensional) of coastal area of Suriname.

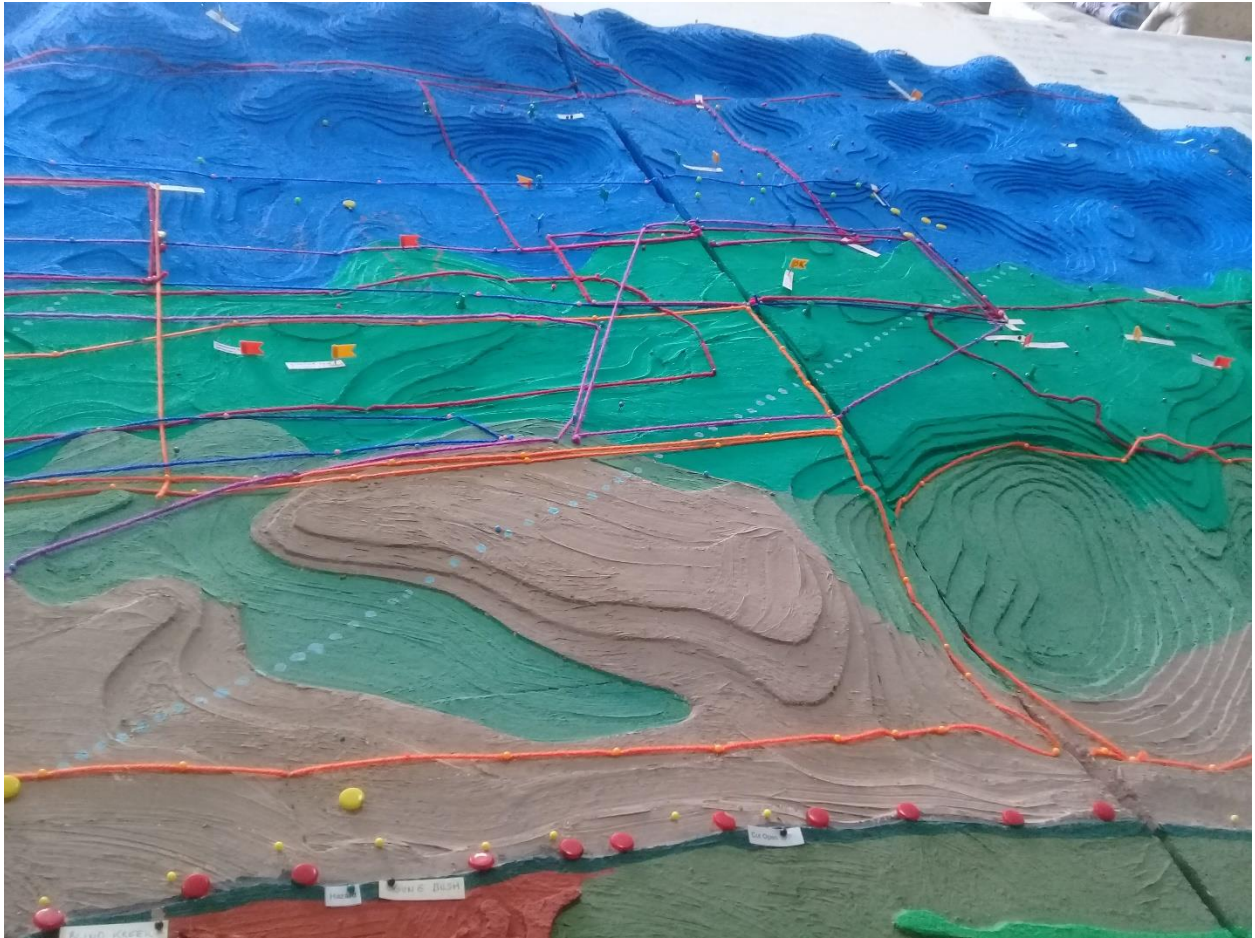


Figure 14: 3-D (three-dimensional) of coastal area of Suriname.

C-55 Summary for:				Comments on Charts:
Country:	Surinam (B)			517, overview, published 2011 2763, general, to be published 2020 2764, coastal, published 2019 2766, approach and harbour, published 2017 2765, approach and harbour, published 2015. New data available update 2020 All charts are available in raster form
Country Iso Code:	SR			
Country SubCode:				
INT Region:	B			
Country/Depend:	C			
Last updated:	10/11/2019			
Provided by:	UK			
Chart coverage	Passage (%)	Coastal (%)	Port (%)	Comments on Surveys:
INT	50	50	100	Special national circumstances which influence the statistical breakdown above (e.g. geographical factors such as narrow continental shelf or fringing reefs, or constraints such as areas of unstable seabed which require a routine resurvey programme). The constant flow of sediments from the Amazon River create migrating mud banks along the coast which move in a westward direction. These banks have great impact on the river systems, therefore have impact on the approaches to ports.
RNC	50	50	100	
ENC	100	100	100	
Status of Paper Charts				
Paper charts with depths in meters (%)			100	
Paper charts referenced to a satellite datum (%)			100	
Status of surveys	Adequate (%)	Resurvey (%)	No survey (%)	
0-200m	90		10	
> 200m	90		10	

MSI	Y/N	Comments on MSI:
Local warning	Y	Published in local newspapers, MAS website, radio, email, sometimes through stakeholder meeting
Coastal warning	Y	MSI are sent through NAVAREA IV Coordinator. Fishermen are informed through stakeholders meetings
Nav warning	Y	MSI are sent through NAVAREA IV Coordinator
Port warning	Y	Nautical accessibilities issued for each port (shipping notices)
GMDSS	Y/N	Comments on GMDSS:
Master Plan	N	The Surinamese Coast Guard is responsible for the implementation of GMDSS. A Master Plan is currently being drafted
Area A1	Y	currently VHF ch 16 communication for 20NM in approaches to ports
Area A2	N	
Area A3	N	
NAVTEX	Y	
SafetyNet	N	