

Mediterranean and Black Seas Hydrographic Commission (MBSHC)
14th Meeting of Black and Azov Seas Working Group (BASWG)

Coordination of Regional Charting

(Agenda item 6)

Presented by Cdr. LAMARRE, Shom.
On behalf of Cpt. LOUVART, Region F RCC

regionFcoord@shom.fr



Region F ICCWG Activities

- **BASWG-13** (3-4 May 2016) : final minutes on MBSHC20 web page
https://www.iho.int/mtg_docs/rhc/MBSHC/MBSHC20/MBSHC20-3.4.2%20BASWG13-Report.pdf
- **3rd Region F ICCWG meeting** (27 April 2017) : final minutes on MBSHC20 web page
https://www.iho.int/mtg_docs/rhc/MBSHC/MBSHC20/3rd_REGION_F_ICCWG_meeting_Minutes_rev1.pdf
- **4th Region F ICCWG meeting** (5 July 2017) : minutes sent by email 09 March 2018
- **WENDWG-8** (20-22 March 2018) : Report of the representative of the MBSHC on the overlapping issues and the implementation of ENC Schemes
https://www.iho.int/mtg_docs/com_wg/WEND/WENDWG8/WENDWG8-04.4H3_MBSHC_Region-F_Rep-21March2018.pdf
- **Region F ICCWG Circular Letters** : 01/2016 (14 April 2016), 02/2016 (8 September 2016), 03/2016 (22 November 2016), 01/2017 (30 June 2017 – Occidental Med. Only)



“Breaking News”

- **Updated S-11 – Part A (Edition 3.1.0)**
- **Updated ToRs and RoPs for the Region F ICCWG (6 July 2017) – Decision MBSHC20/09**
- **IHO resolution 1/2018 (CL19/2018) :**
Elimination of overlapping ENC data in areas of demonstrable risk to the safety of navigation
- **INToGIS Phase II coming**
See WENDWG8 web page – HSSC9-11A-INF1 Rev 1
INT Charts and ENC (ENC Scheme : gap finder, overlaps)
Additional layers (AIS traffic density, CATZOC...)
Experimentation phase by RHCs before commissioning (WENDWG8/19)



Black & Azov Seas INT Scheme

Agreed INT Scheme : 33 Produced & 9 Schemed charts (April 2018)

- Production of **INT3871 & INT3873** transferred from **RF** to **GE** – Decision MBSHC20/07
- GE102 and GE104 are now included in the regional INT scheme
 - ✓ GE102 > ~~INT3861~~ (Region F ICCWG CL 03/2016 i) **INT3872** (final adopted INT N°)
 - ✓ GE104 > ~~INT3862~~ (Region F ICCWG CL 03/2016 i) **INT3876** (final adopted INT N°)

New INT chart producers to provide Region F ICC with the new INT charts iaw IRCC7 Decision 3 – MBSHC20/32



Black & Azov Seas INT Scheme

Agreed INT Scheme : 33 Produced & 9 Schemed charts (April 2018)

- RO1.010.11 > **INT3902** and RO1.010.031 > **INT3904** are now included in the regional INT scheme – Decision MBSHC20/05
MS to submit their new INT chart proposal using their INTToGIS national account – MBSHC20/36.
- Co-production of **INT3808** (BASWG13/06) - Co-production by GE & TR
Proposed BASWG action
GE & TE are invited to update INTToGIS metadata once the chart will be finalized and to send a copy to the Region F ICC.



Black & Azov Seas INT Scheme

Agreed INT Scheme

- **INT3812**

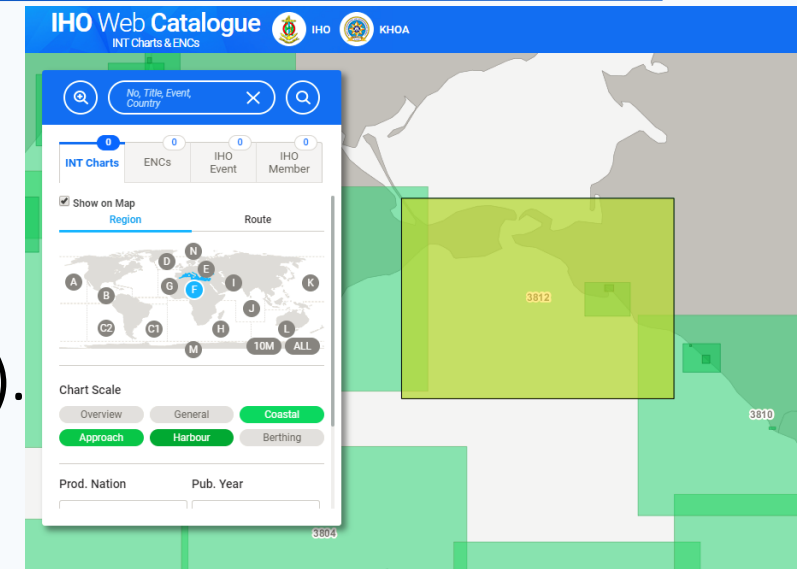
Should be co-produced by RF (RU32172) and UA (UA3228).

BASWG14 : UA reports that this co-production is not effective and currently impossible with RU.

UA reissued the INT3812 chart in Sept. 2017.

No information received from RU

Possible risks to the safety of navigation as a result of this non co-production ?



Scale 1 : 300 000

But no higher scale available

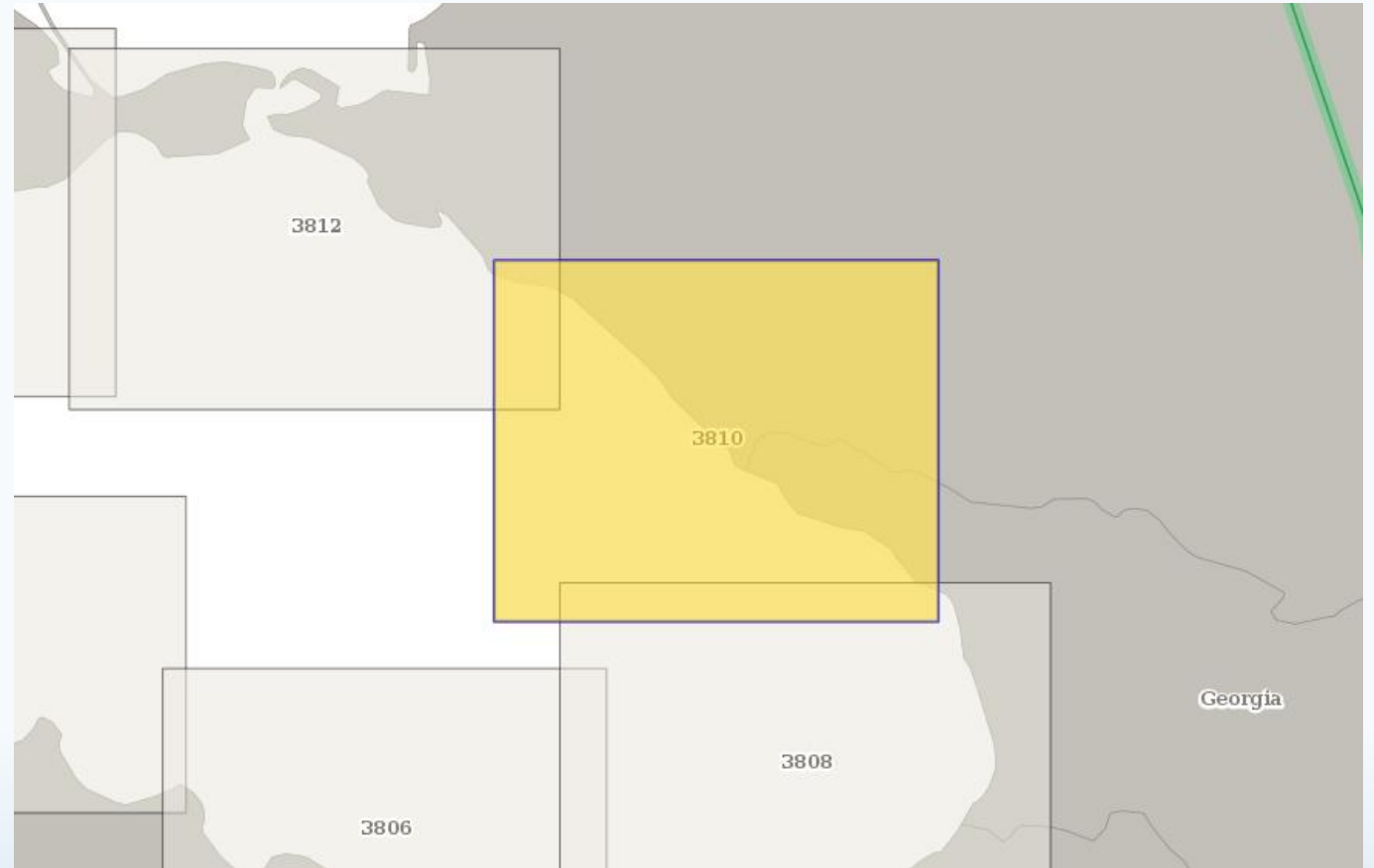
INToGIS II



Black & Azov Seas INT Scheme

Pending INT Charts : pending submitted charts or production assignment (April 2018)

- Request from GE to co-produce
INT3810
BASWG13/05



Black & Azov Seas INT Scheme

Pending INT Charts : pending submitted charts or production assignment (April 2018)

- Request from GE to co-produce INT3810
 - INT3810 is currently produced by RF (RU 32173)
 - BASWG13 : *It was agreed that GE to liaise with RU regarding co-production of INT3810 and INT3875 and report back to the Region F ICC until the next MBSHC meeting*
 - No information recorded on this subject within Region F ICCWG CL 02/2016 & 03/2016, Region F ICCWG 3th and 4th meetings, MBSHC20

BASWG14 : GE reports no progress towards a co-production of this chart



Black & Azov Seas INT Scheme

Pending INT Charts : pending submitted charts or production assignment (April 2018)

- Request from GE to produce **INT3875** - Sokhumi port with Approaches (GE108) (BASWG13/05)
 - 2009 : MBSHC19, RU proposed to abort producing this chart due to lack of information.
 - BASWG recommended to wait until GE is a full IHO member to achieve the transfer.
 - 2015 : GE became an IHO Member.
 - 2016 : Region F IRCCWG CL 01/2016, RU objected to the transfer of production to GE
 - Due to lack on consensus on this chart, INT3875 is currently not assigned

Proposed BASWG action

Record GE request to produce INT3875.



Black & Azov Seas INT Scheme

Pending INT Charts :

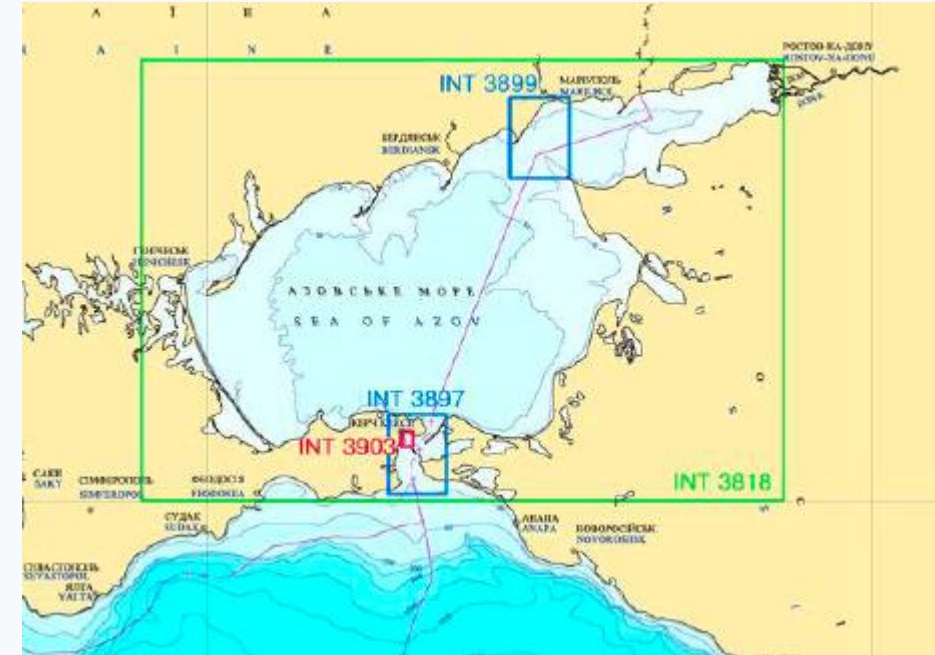
- Request from UA to produce 4 INT Charts

3417	3897	UA	50 000	Kerchenska Strait
3421	3899	UA	50 000	Approaches to Mariupol Port
3632	3903	UA	10 000	Kerch Port
3229	3818	UA	350 000	Sea of Azov

Previously recorded on the former INT Scheme (May 2015)

- **INT3897** : co-production RU & UA
- INT3899 : co-production RU & UA
- **INT3903** : production by UA
- **INT3818** : co-production RU & UA

Currently not assigned on INTToGIS, no discussion on these 4 charts on the last 3 years.



Black & Azov Seas INT Scheme

MBSHC-20 Actions relating to INT Scheme / Production affecting BASWG Members

- MBSHC20/15 : To liaise with INTToGIS Management team (IHO Secretariat) to retrieve their national account access details.
 - **OK for IHO MS of the BASWG** (GE, RO, RU, TR & UA).
 - Bulgaria, once IHO membership has been finalized, contact the IHO secretariat to retrieve account access details
- MBSHC20/35 : MS to check and, if necessary, update their INT charts metadata (chart limit, title, year, format, scale, etc.) included in the region F INT catalogue using their INTToGIS national account.

Permanent action



Black & Azov Seas INT Scheme

MBSHC-19 Actions relating to INT Scheme / Production affecting BASWG Members

- MBSHC19/15 : MSs to provide the Region F ICC and the IHO Secretariat with a hard copy or online access to their national chart catalogue.

Pending action

https://www.iho.int/srv1/index.php?option=com_content&view=article&id=395&Itemid=428&lang=en

Access to RO, RU, TR online national chart catalogue **is not available** through IHO web site



Black & Azov Seas ENC Scheme

- **Region F affected by persistent overlap**

BASWG sub-region particularly concerned

- Overlaps concern all usage bands

- PRIMAR overlap checker ‘Hits’

Remark : change in the method of counting the ‘Hits’

For each entry cell, the total number of overlapped cells (other producers & own overlap) is counted

‘OO’ = Own Overlap, each instance is counted

Example

UA4T3434	Bezimenna Beak to Beglytska Beak	RU4MJLN0, RU4MKLP0, UA4CC766, UA4CC767, UA4CC796, UA4CC797	6 ‘Hits’ & 4 ‘OO’
UA4T3436	Kerchenska Strait to Temriukyski	RU4MFLJ0, RU4MFLK0, UA4CC884, UA4T3417	4 ‘Hits’ & 2 ‘OO’



Black & Azov Seas ENC Scheme

- PRIMAR overlap checker 'Hits' – Region F / BASWG Sub-region

Total number of 'Hits' dims

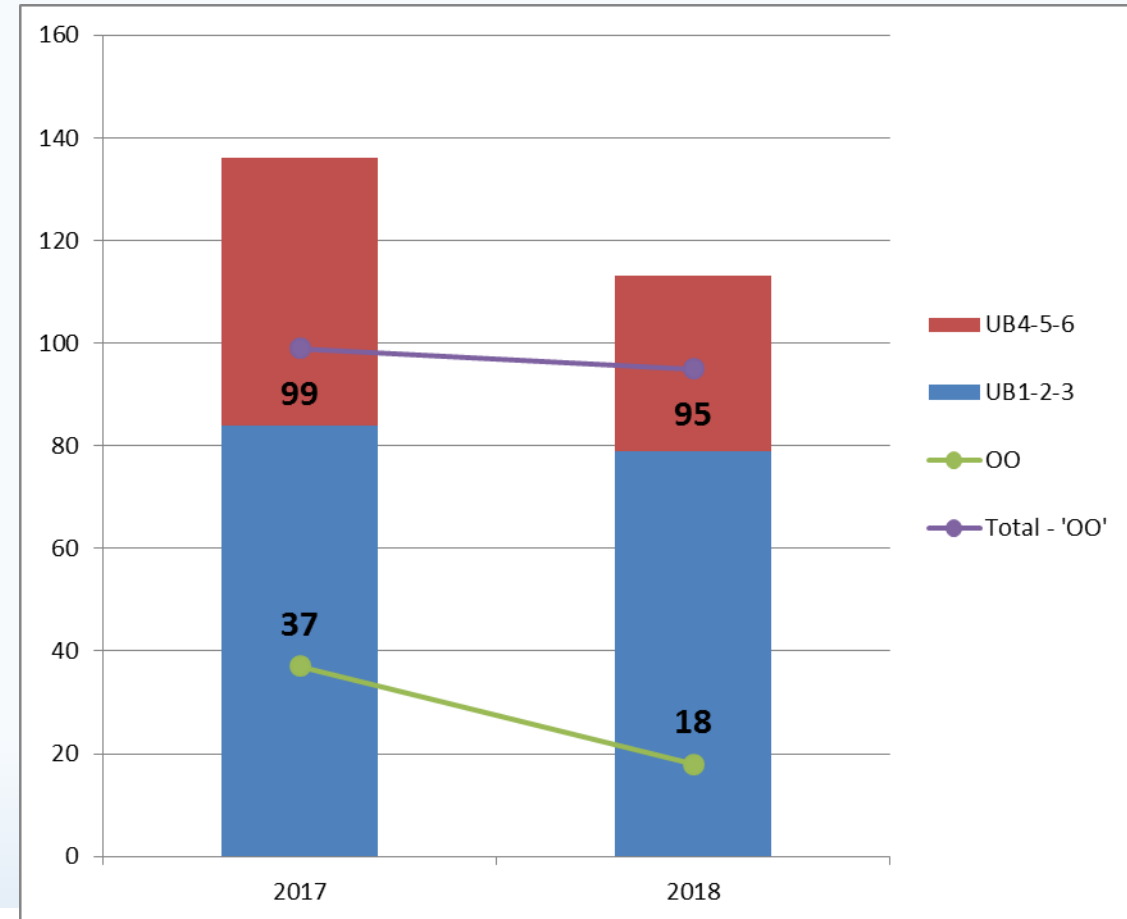
(136 Jan 2017 ↘ 113 March 2018)

Mainly due to **reduction of the own overlaps**

(37 ↘ 18)

Number of "real" 'hits' remains globally stable

(99 ↘ 95 between Jan 2017 and March 2018)



Black & Azov Seas ENC Scheme

Several actions endorsed by MBSHC, WENDWG with the support of the RENCs to solve these overlaps

- **MBSHC19/29** : ICCWG Members to provide Region F ICC with their ENC production plan for UB4-5-6 – *On going*

Poor level of provision of ENC production plan so far.

MSs are invited to send their updated ENC production plan to the Region F ICC by October 31st 2018, in order to populate INToGIS Phase II (which will include ENC Schemes) before WENDWG9.

Updated S-11 – Part A : Section 200 (Edition 3.1.0) / Preparation and Maintenance of ENC Schemes



Black & Azov Seas ENC Scheme

Several actions endorsed by MBSHC, WENDWG with the support of the RENCs to solve these overlaps

- **MBSHC20/19** : Concerned MSs to liaise bilaterally to resolve ENC overlaps, keeping the MBSHC Chair informed – *On going*
- **MBSHC20/21** : RENCs to provide a template report in order to collect the evaluation of risk level on ENC overlaps from the MS in the frame of the WENDWG risk assessment experimentation – *Completed in Sept. 2017*

Based on IC-ENC Policy D10 v2.0.0 [09/12/16]

IC-ENC REGIONAL HYDROGRAPHIC COMMISSION OVERLAP REPORT - MEDITERRANEAN BLACK SEA HC - SEP 2017

ID	STATUS	RENC Membership	RHC	ENC 1	ENC 2	Usage Band	ENC 1 Scale	ENC 2 Scale	ENC 1 EN (ER)	ENC 2 EN (ER)	Overlap extent (Kmqkm) (msquare NM)	Content difference	Geog. Location	Shipping density	Size	Scale	Route patterns	ECDIS	Overall Severity of Risk	Justification	Action requested	Report response HO 1	Report response HO 2
----	--------	-----------------	-----	-------	-------	------------	-------------	-------------	---------------	---------------	-------------------------------------	--------------------	----------------	------------------	------	-------	----------------	-------	--------------------------	---------------	------------------	----------------------	----------------------



Black & Azov Seas ENC Scheme

Several actions endorsed by MBSHC, WENDWG with the support of the RENCs to solve these overlaps

- **MBSHC20/22** : MS to use the RENCs' template report to provide the RCC with:
 - evaluation of risk level on the most critical ENC overlaps based on the IC-ENC risk assessment regional database ;
 - their views and comments on the IC-ENC risk assessment methodology.

On going

Feedback received from GR, IT, TR and UA.



Black & Azov Seas ENC Scheme

Several actions endorsed by MBSHC, WENDWG with the support of the RENCs to solve these overlaps

- **RENCs & IHO secretariat** : support HOs with tools to identify and analyze overlaps
 - INToGIS Phase II
 - IC-ENC Policy : recognized by IRCC as a useful 1st step to assess the potential risk for mariners of overlapping ENC data. It is not, however, an IHO standard, it remains a decision aid only.
 - New PRIMAR Overlap and Consistency Checker with new user manual : see WENDWG8-04.1B3c1&2

https://www.iho.int/mtg_docs/com_wg/WEND/WENDWG8/WENDWG8-04.1B3c1_PRIMAR%20RENC%20Overlap%20Checker.pdf

https://www.iho.int/mtg_docs/com_wg/WEND/WENDWG8/Overlap%20Checker%20and%20ENC%20Coverage_Rev1.pdf



Black & Azov Seas ENC Scheme

MBSHC – BASWG Sub Region – ENC overlaps, “highest” risk cases

(based on IC-ENC’s Overlapping Data Policy & Reporting / PRIMAR Overlap and Consistency Checker)

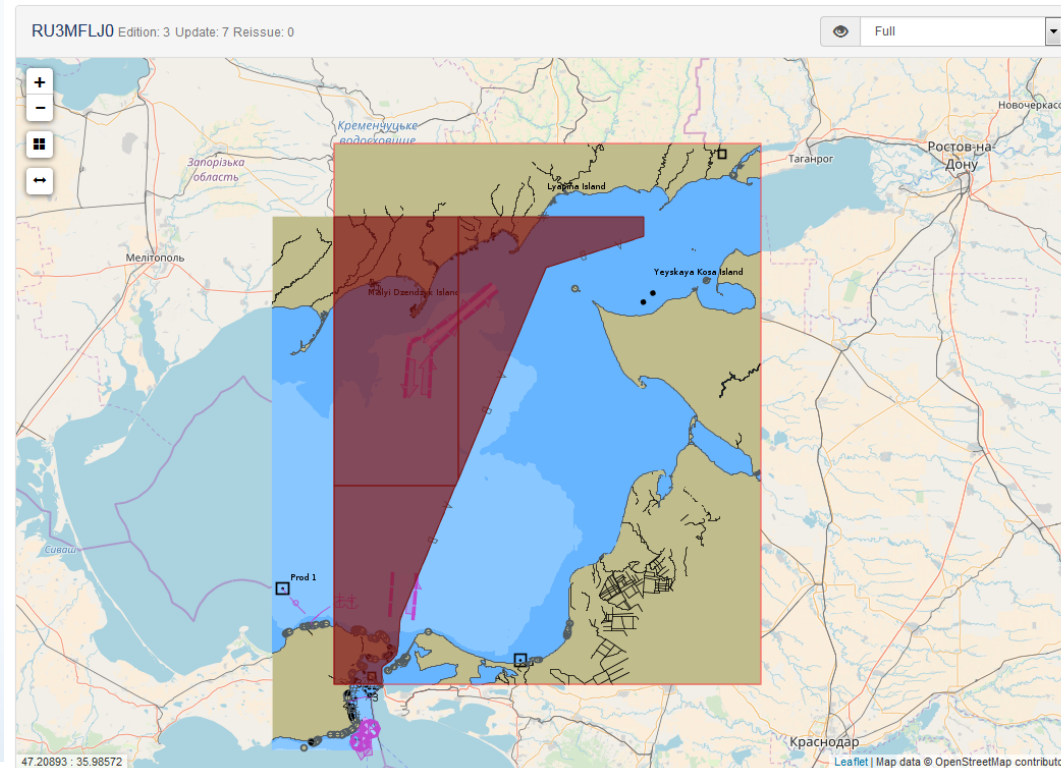
RU3MFLJ0 & UA3AD397

RU3MFLJ0 & UA3AD398

RU3MFLJ0 & UA3AD427

Overlaps includes RECTRCs
which are used fairly
frequently

Overlap & Consistency Checker



Overlaps					
<input type="checkbox"/>	UA3AD368	2	5	0	Compare
<input type="checkbox"/>	UA3AD369	1	2	0	Compare
<input checked="" type="checkbox"/>	UA3AD397	1	7	0	Compare
<input checked="" type="checkbox"/>	UA3AD398	2	3	0	Compare
<input type="checkbox"/>	UA3AD399	2	1	0	Compare
<input checked="" type="checkbox"/>	UA3AD427	3	13	0	Compare

Distance: 5m

Update

S-57 Layer Order	
UA3AD427,3,13,0	
UA3AD398,2,3,0	
UA3AD397,1,7,0	
RU3MFLJ0,3,7,0	

Rearrange order by click and hold a row and place in the new position



Black & Azov Seas ENC Scheme

MBSHC – BASWG Sub Region – ENC overlaps, “highest” risk cases

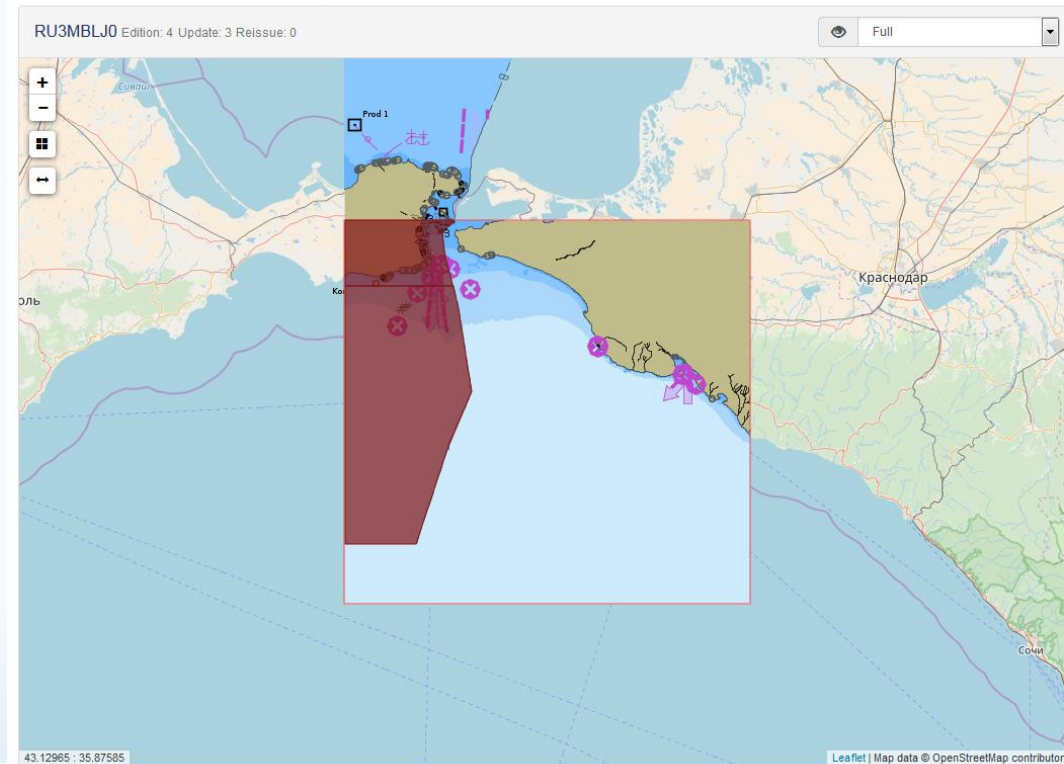
(based on IC-ENC’s Overlapping Data Policy & Reporting / PRIMAR Overlap and Consistency Checker)

RU3MBLJ0 & UA3AD427

RU3MBLJ0 & UA3AD457

Overlap includes RECTRCs
and situated in a tight
Straight.

Overlap & Consistency Checker



Cell ID	EDTN	UPDN	Reissue	Visibility	
<input type="checkbox"/> UA3AD426	1	3	0	<input type="range"/>	Compare
<input checked="" type="checkbox"/> UA3AD427	3	13	0	<input type="range"/>	Compare
<input type="checkbox"/> UA3AD456	1	3	0	<input type="range"/>	Compare
<input checked="" type="checkbox"/> UA3AD457	3	3	0	<input type="range"/>	Compare
<input type="checkbox"/> UA3AD486	1	1	0	<input type="range"/>	Compare

Distance: 5m

S-57 Layer Order
UA3AD427,3,13,0
UA3AD457,3,3,0
RU3MBLJ0,4,3,0

Rearrange order by click and hold a row and place in the new position



Black & Azov Seas ENC Scheme

MBSHC – BASWG Sub Region – ENC overlaps, “highest” risk cases

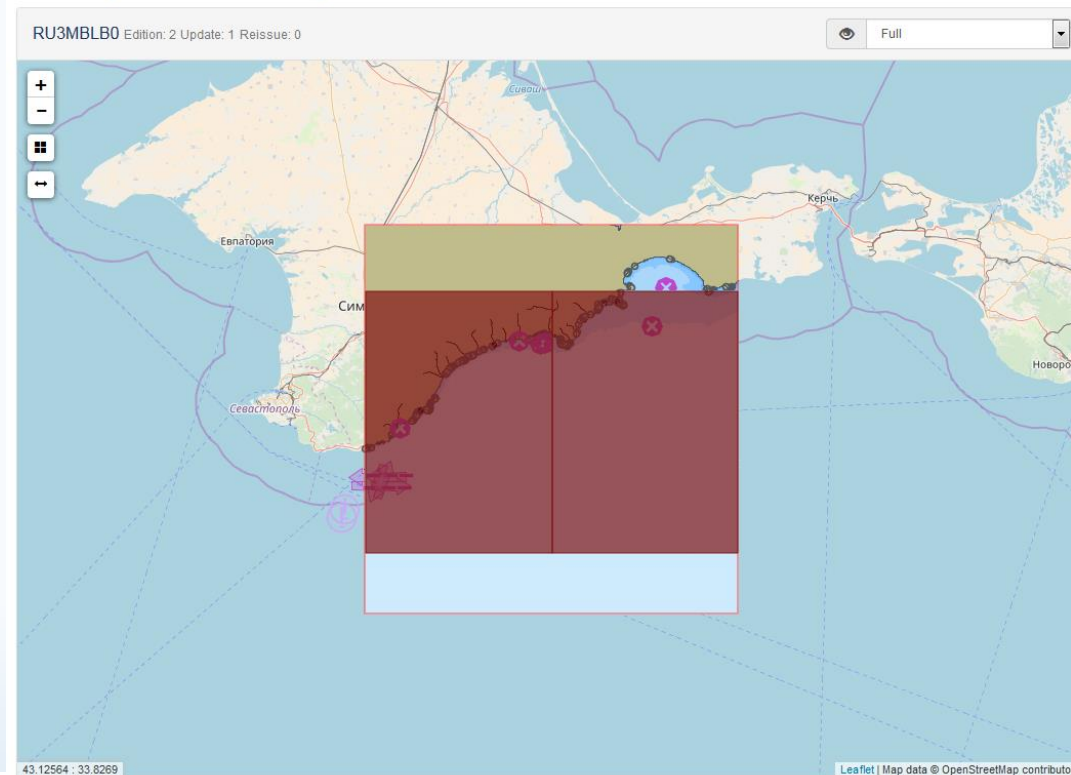
(based on IC-ENC’s Overlapping Data Policy & Reporting / PRIMAR Overlap and Consistency Checker)

RU3MBLB0 & UA3AD455

RU3MBLB0 & UA3AD456

Overlap located in coastal waters, includes main traffic routes with a TSS

Overlap & Consistency Checker



Overlaps					
<input type="checkbox"/>	UA3AD426	1	3	0	Compare
<input type="checkbox"/>	UA3AD454	2	4	0	Compare
<input checked="" type="checkbox"/>	UA3AD455	1	4	0	Compare
<input checked="" type="checkbox"/>	UA3AD456	1	3	0	Compare
<input type="checkbox"/>	UA3AD484	1	1	0	Compare
<input type="checkbox"/>	UA3AD485	1	1	0	Compare

Distance: 5m

Update

S-57 Layer Order	
UA3AD456,1,3,0	
UA3AD455,1,4,0	
RU3MBLB0,2,1,0	

Rearrange order by click and hold a row and place in the new position



Black & Azov Seas ENC Scheme

MBSHC – BASWG Sub Region – ENC overlaps, “highest” risk cases

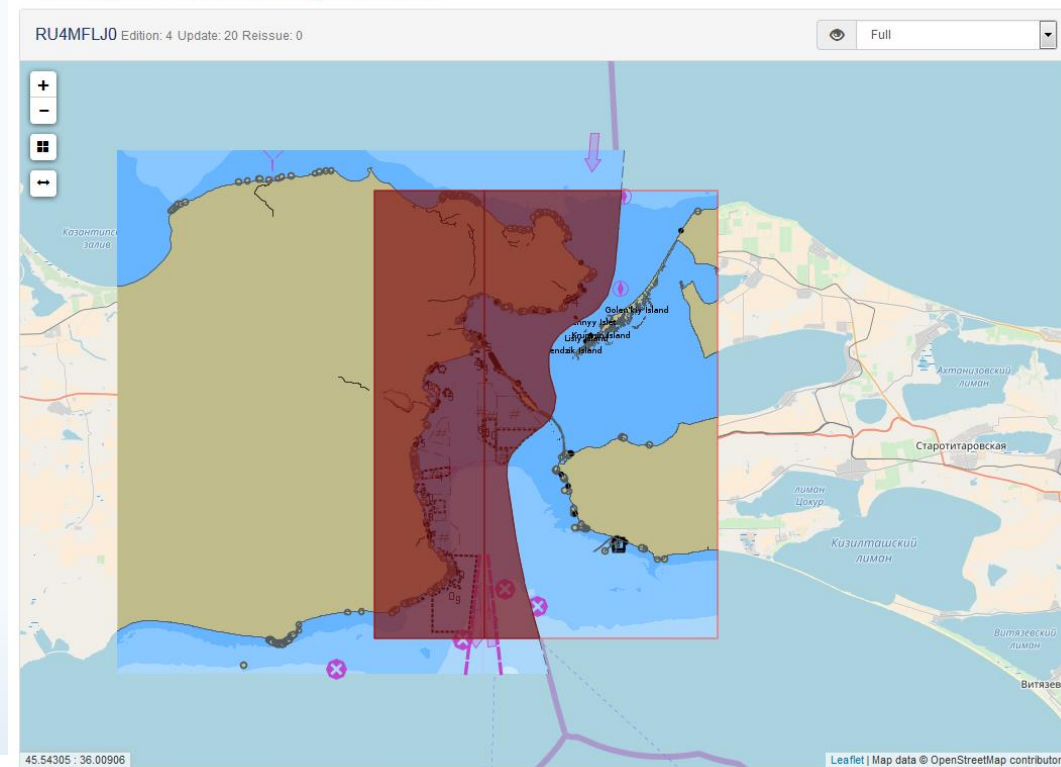
(based on IC-ENC’s Overlapping Data Policy & Reporting / PRIMAR Overlap and Consistency Checker)

RU4MFLJ0 & UA4CC883

RU4MFLJ0 & UA4CC884

Overlap situated in a tight straight, with a main route through Kerch Straights

Overlap & Consistency Checker



Black & Azov Seas ENC Scheme

MBSHC – BASWG Sub Region – ENC overlaps, “highest” risk cases

(based on IC-ENC’s Overlapping Data Policy & Reporting / PRIMAR Overlap and Consistency Checker)

RU5MELJ0 & UA5ECM39

Overlap situated in an area of interest for navigation, inconsistencies between overlapping cells

Overlap & Consistency Checker

Cell ID	EDTN	UPDN	Reissue	Visibility	
<input checked="" type="checkbox"/> UA5ECM39	1	0	0	<input type="range"/>	Compare

Distance: 5m

S-57 Layer Order

- UA5ECM39,1,0,0
- RU5MELJ0,1,35,0



Black & Azov Seas ENC Scheme

MBSHC – BASWG Sub Region – ENC overlaps

IHO Resolution 1/2018 – *Elimination of overlapping ENC data in areas of demonstrable risk to the safety of navigation*

Elimination of overlapping ENC data in areas of demonstrable risk to the safety of navigation	1/2018	IHO CL 19/2018	
--	---------------	-----------------------	--

1. It has been reported that overlapping ENC data, when used in ECDIS equipment, may lead to unpredictable behaviour in at least the following cases:
 - overlapping data occurring in the same usage band (Navigational Purpose);
 - overlapping data occurring in ENC cells in different usage bands (Navigational Purposes) but using the same compilation scale.



Black & Azov Seas ENC Scheme

MBSHC – BASWG Sub Region – ENC overlaps, “highest” risk cases

(based on IC-ENC’s Overlapping Data Policy & Reporting / PRIMAR Overlap and Consistency Checker)

Region F Charting Coordinator reports to ENC producers these “highest” risk overlapping cases in accordance with IHO resolution 1/2018

However, ENC producers are reminded, in accordance with WEND principles, that all overlaps must be resolved !

RCC cannot arbitrate or substitute to a direct bilateral discussion between producers. Dialogue between parties involved must be strengthened. RCC urges producers to discuss. (MBSHC CL4 encourages to liaise bilaterally)



Black & Azov Seas ENC Scheme

Port Lists

- **MBSHC20/17** : MS to use the IHO online port database to update their port priority list and report to the Regional Charting Coordinator (RCC) - *On going*
Update received from FR, MA, GR, HR, IT and RO
GE, RU, TR and UA are invited to update their port priority list.
- **MBSHC20/18** : RCC to disseminate an updated version of the Port priority list.

List of ports (based on the NGA NP 150) have been updated on the WENDWG Repository webpage

https://www.iho.int/mtg_docs/com_wg/WEND/WENDWG_Repository/WENDWG_Repository.htm



Black & Azov Seas – Other ENC business

- **MBSHC20/03** : MS are encouraged to populate the CATZOC values (1 to 5) of their ENC cells iaw HSSC8 action 38.
- **MBSHC20/08** : MSs and AMs to ensure that the information on any requirements for ECDIS back-up arrangements using paper charts have been posted on the IHO website, and to update or give confirmation of no change at least once a year.
https://www.iho.int/srv1/index.php?option=com_content&view=article&id=394&Itemid=740&lang=en

Pending action

No information on IHO web site for GE, RO and TR
Information from RU possibly outdated ?



Black & Azov Seas Working Group (1/2)

The BASWG is invited to :

- Take note of the RCC report for the Black & Azov Seas
- Encourages BASWG MS to provide their national chart catalogue (online access preferably) to the RCC and the IHO Secretariat
- Encourage BASWG MS to use INTToGIS to update their INT chart information and to submit new proposals
- Encourage BASWG MS to provide RCC with their ENC production plan for UB4-5-6
- Encourage BASWG ENC producers concerned to liaise bilaterally to resolve ENC overlaps
- Request BASWG to register that “highest” risks have been reported to ENC producers (in accordance with IHO resolution 1/2018) and to report to MBSHC



Black & Azov Seas Working Group (2/2)

The BASWG is invited to :

- Encourage BASWG MS to use the IC-ENC template report to provide the RCC with their evaluation of risk level on ENC overlaps
- Encourage BASWG MS to express their views and comments on the IC-ENC risk assessment methodology
- Encourage BASWG MS to update their port priority list and report to the RCC
- Encourage BASWG ENC producers to populate the CATZOC values of their ENCs
- Encourage BASWG ENC producers to provide information on ECDIS back-up arrangements



Thank you

