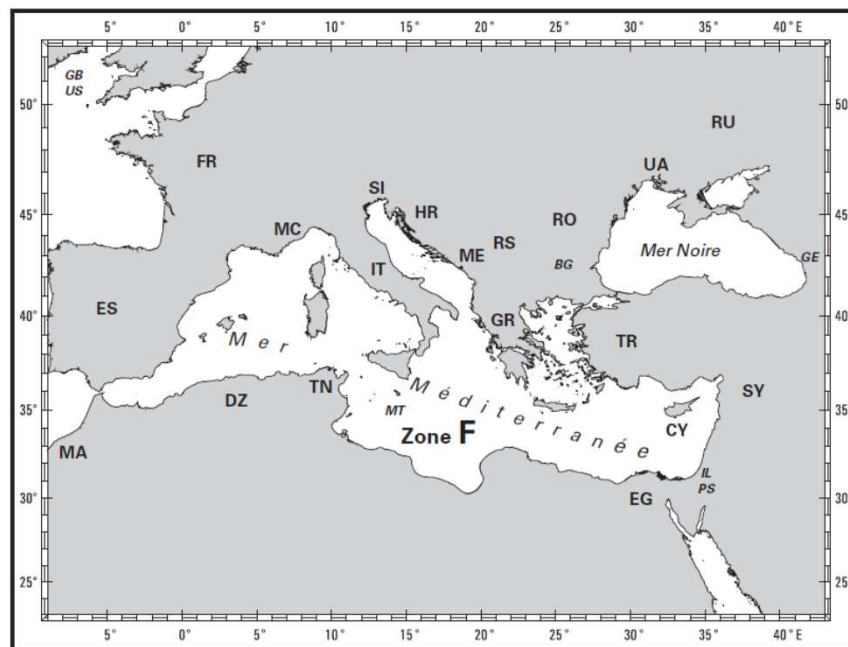


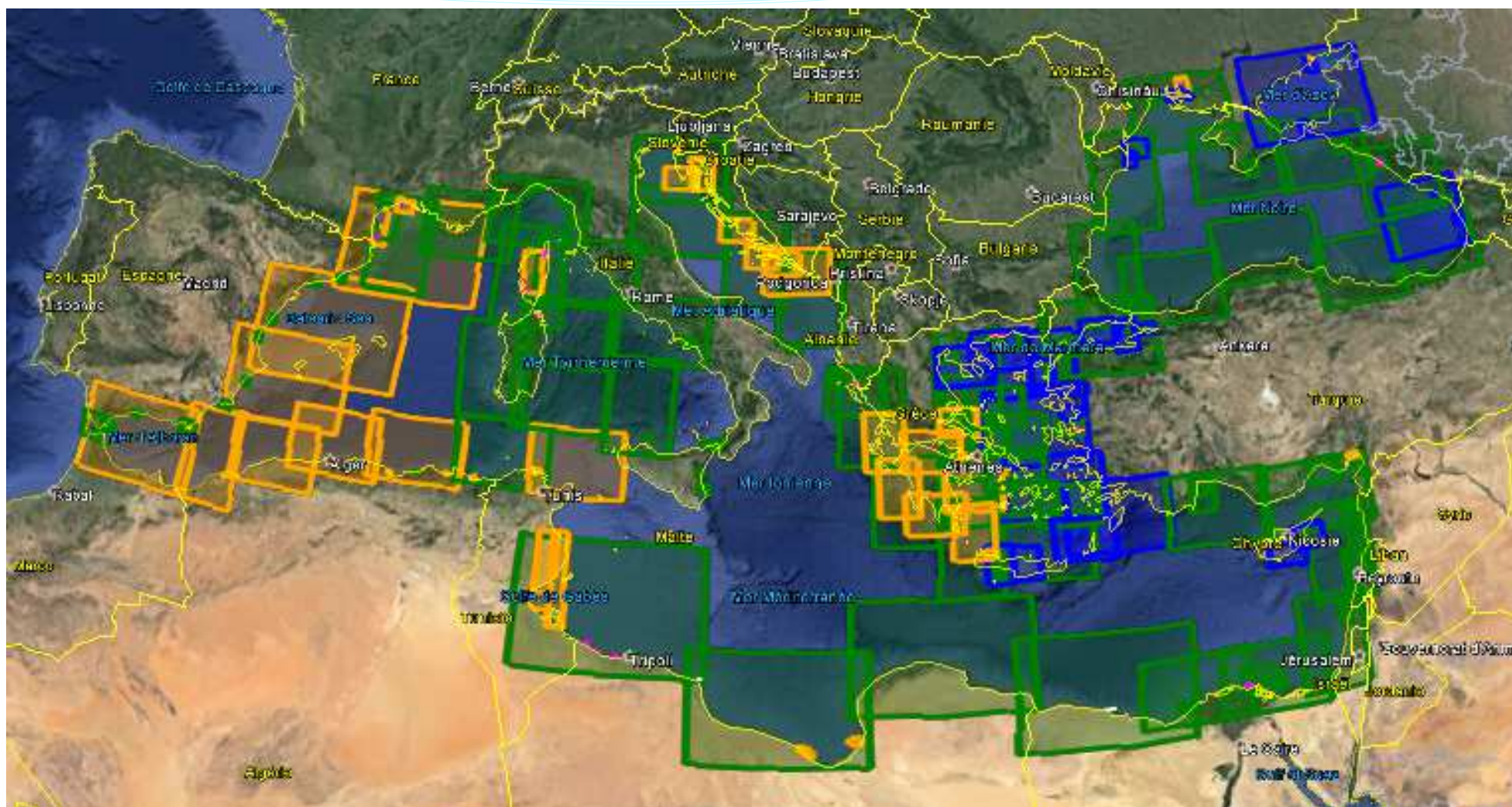


19th *MEDITERRANEAN & BLACK SEA COMMISSION CONFERENCE* (Batumi, Georgia)

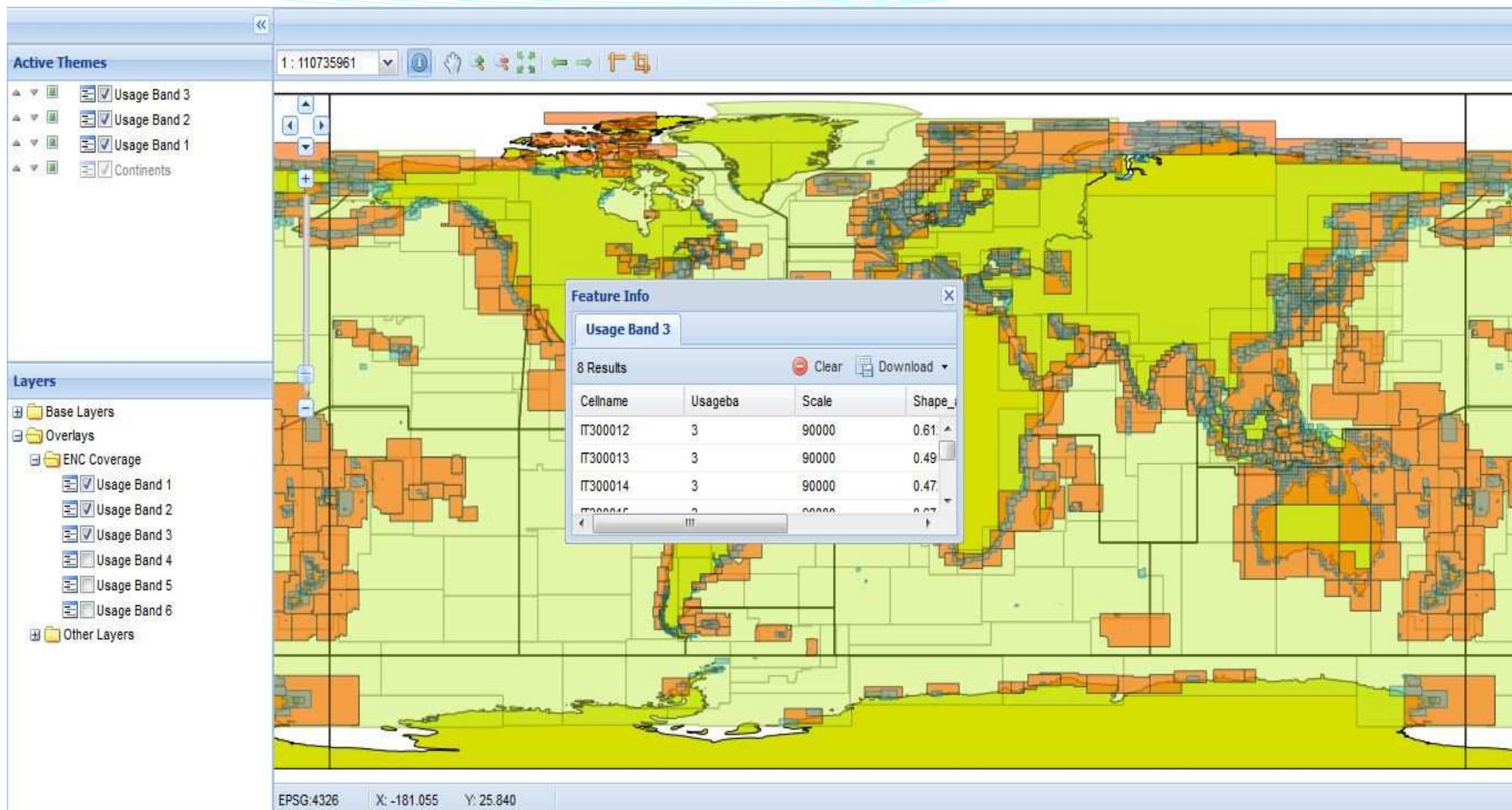


4.5A - *Regional Chart Co-ordination monitoring tools*

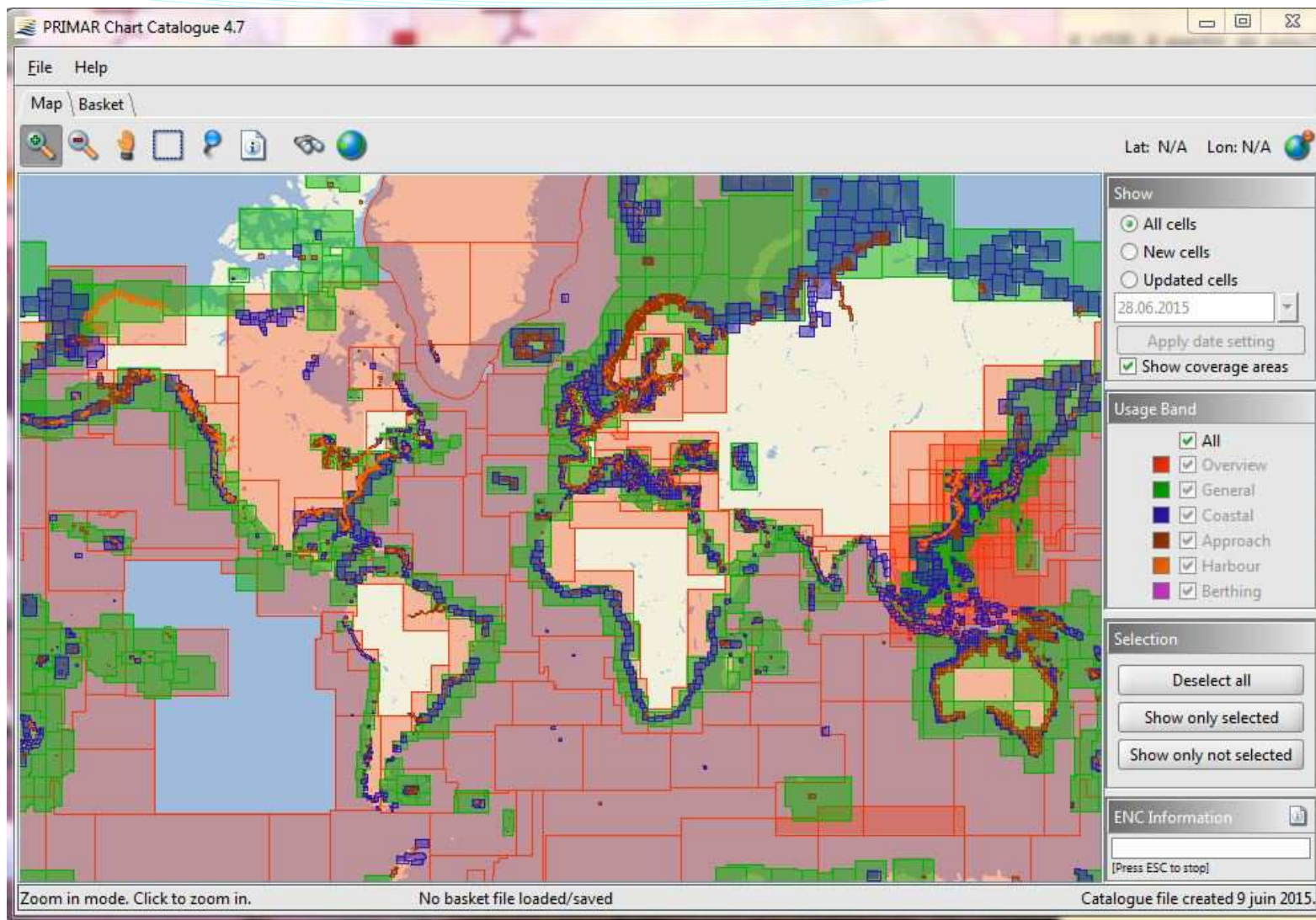
INT Chart Management: Draft KML catalogue




ENC coverage: ENC Online Catalogue (IHO)



ENC coverage: PRIMAR Online Catalogue (NHO)



ENC overlap tools: PRIMAR Overlap Checker

 PRIMAR PORTAL FREEDOM TO CHOOSE

MY PAGE | VPN | VRC | MY REPORTS | UPDATE TRACKER Administration

SHOM-PRODCE (Yann Keramoal (France)) Sign Out

CHECK OVERLAP CANDIDATES

SEARCH

FR France

Distance: 5m

Find Overlaps


Coverage


RESULTS

Print

Cell	Title	Overlapping Cells
FR166230	North Atlantic Ocean - Off French coasts	PT111101
FR166240	Islas Canarias to Freetown	IT100360
FR200010	Bay of Biscay	ES201080
FR301010	Pas de Calais - Eastern part	BE3VLBNK GB301504
FR301030	Pas de Calais - Western part	GB301610
FR368570	Pointe de Barfleur to Fécamp - Baie de Seine	GB302454 GB32450A

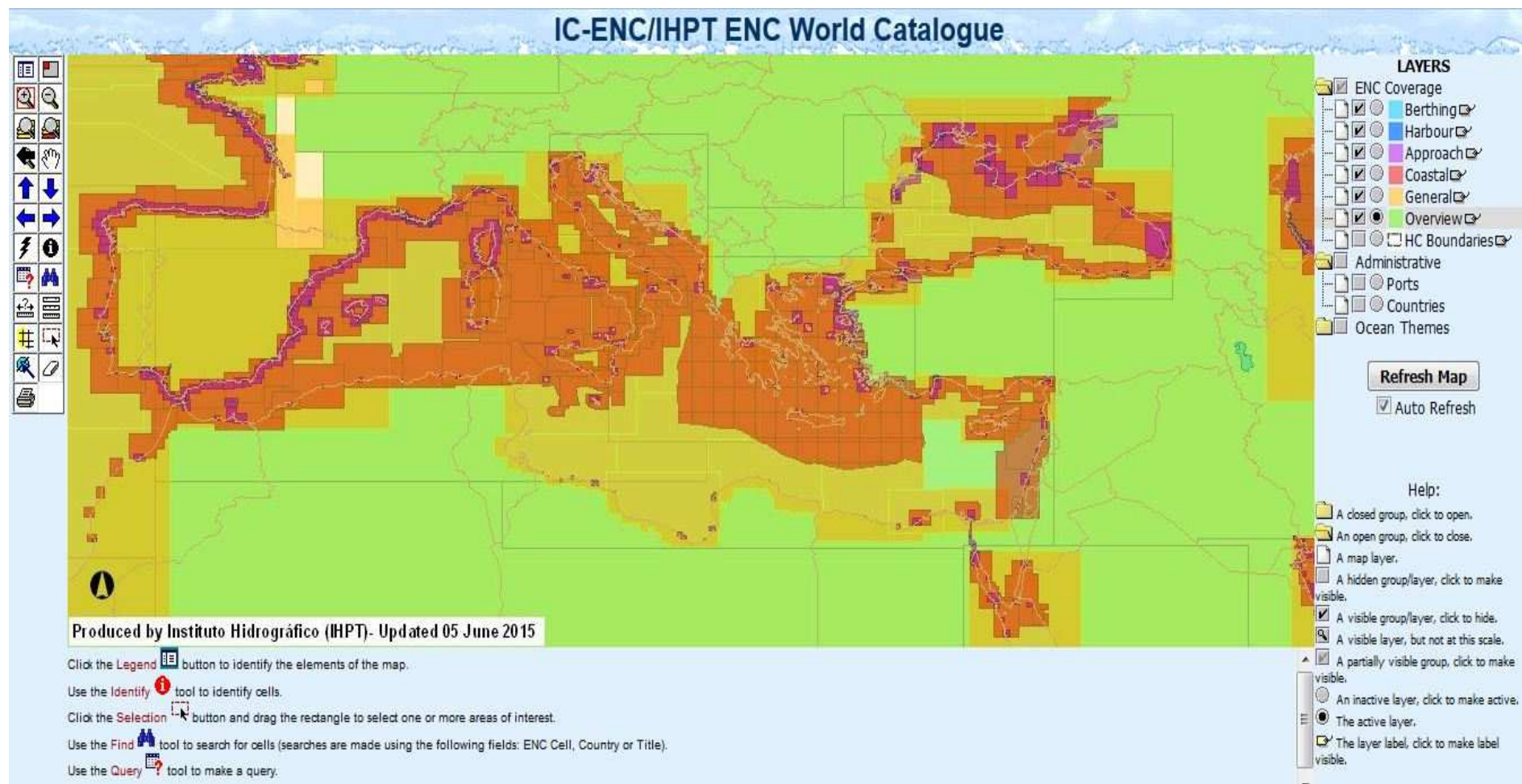
19th MBSHC – 19^{ème} CHMMN - Batumi – Georgia



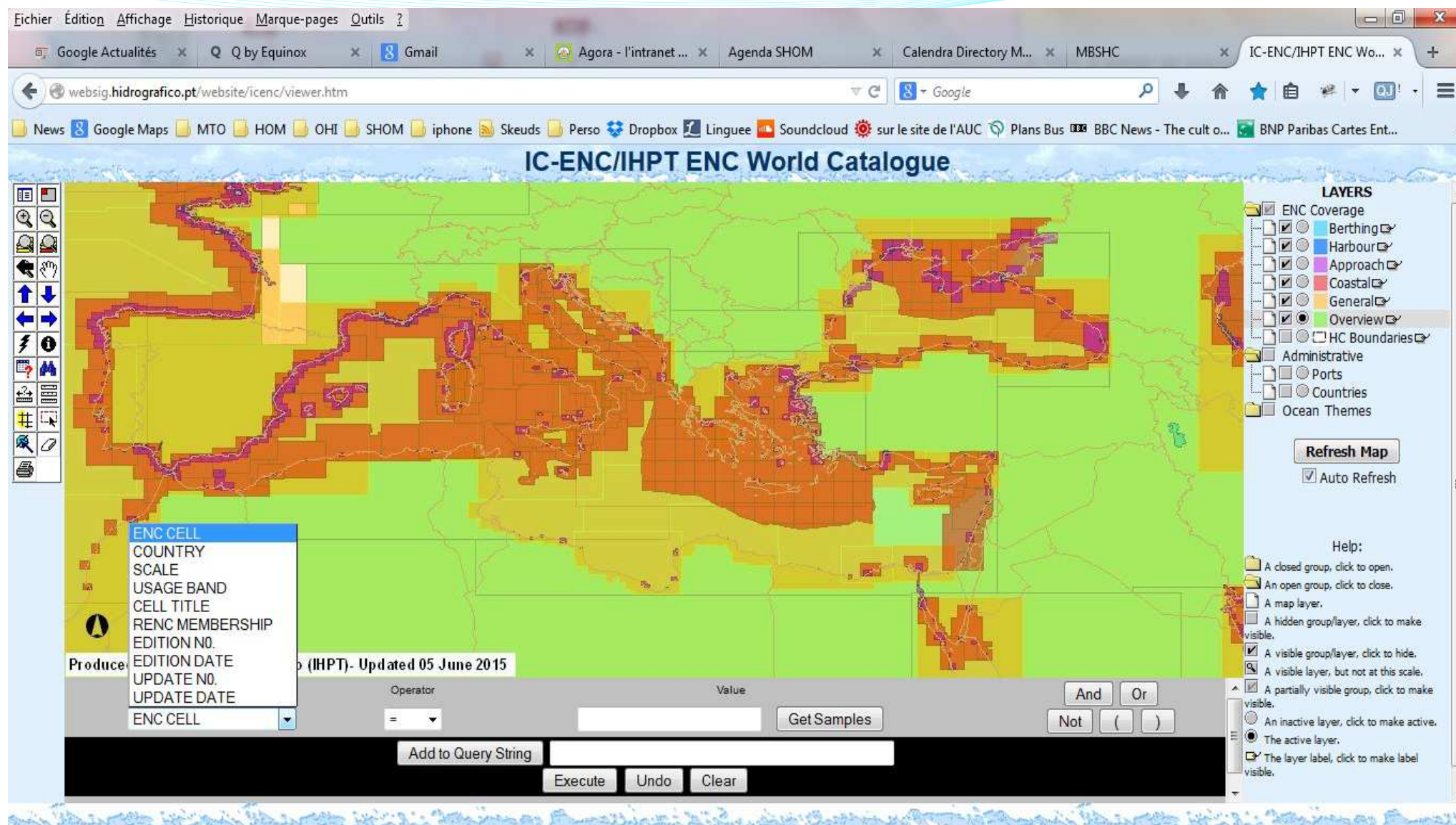


Region F ICC Monitoring tools

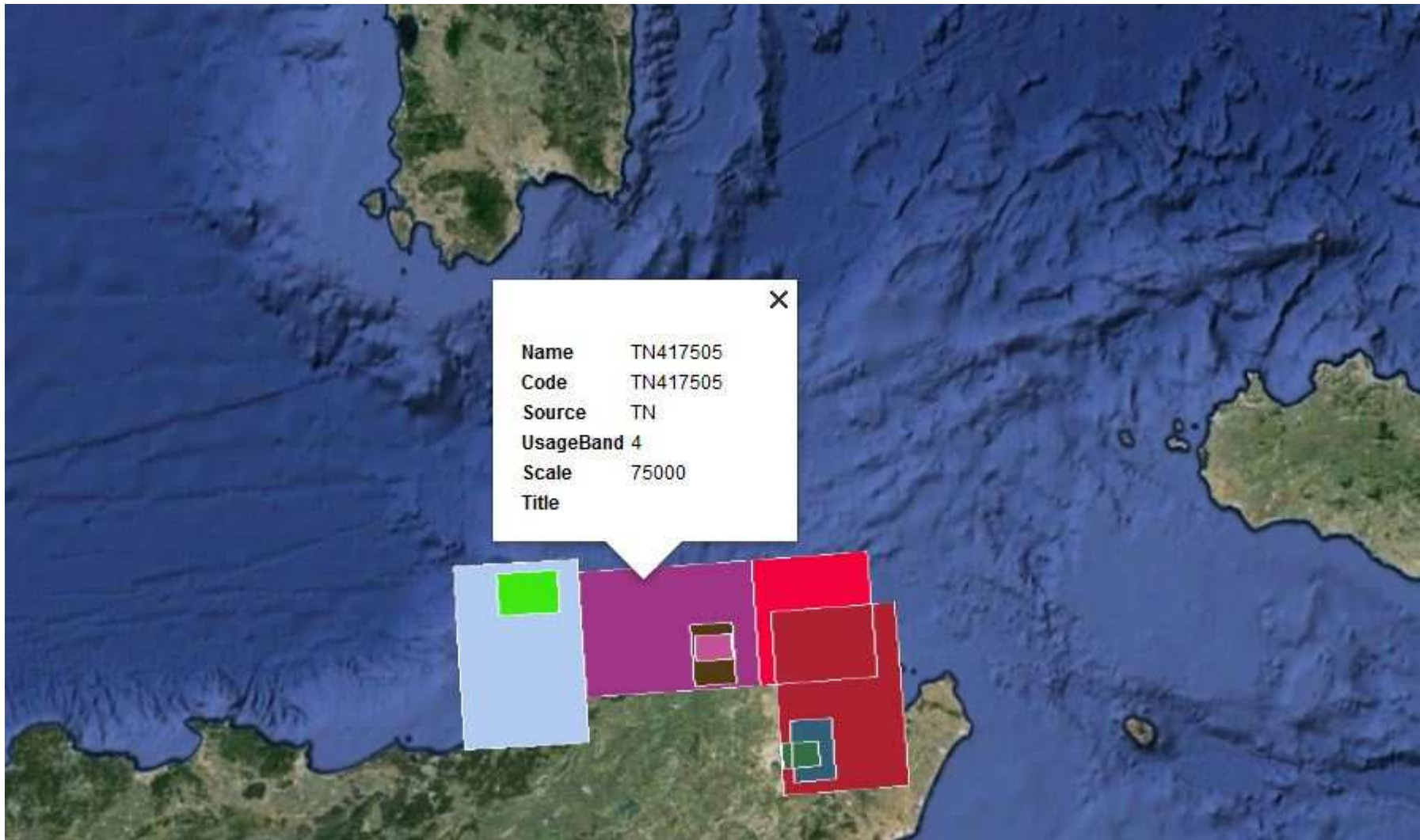
ENC coverage: IC-ENC/IHPT Online Catalogue



RENC tools: IC-ENC Query Research



NO-RENC coverage: JEPPESEN shapefile catalogue



ENC Source Overview

 *Information flux*
 *Visualization*

