

Agenda 6.5.2a - IC-ENC Report

MBSHC Meeting 19, June 2015

Butami, Georgia

**Mr James Harper,
IC-ENC General Manager**

IC-ENC Annual Report

ic-enc

QUALITY ASSURANCE

The IC-ENC Validation Team in UK the large majority were update files

IC-ENC returns ENC files for Impro

OTHER KEY ACHIEVEMENTS 2

IC-ENC MEMBERSHIP

IC-ENC has welcomed six new nations as members during 2014, taking the total to 34 members. We welcomed Egypt and Malaysia, taking the total to 34 members. We also welcomed arrangements for Philippines and Malaysia, and our team welcomed 250 Italian ENC's into the IC-ENC folio. Production support of ENC's expected in early 2015.



IC-ENC Members: 34

EXTRAORDINARY INTERNATIONAL HYDROGRAPHIC CONFERENCE
IC-ENC exhibited at the EIH conference in October, along with a shared stand area. It was a good opportunity to strengthen relationships with members, and to describe IC-ENC services to others. In the afternoon, made to the forum by our Vice Chairman, Ricardo Lopez Cruz, delivery in his native tongue, Spanish, was received well by



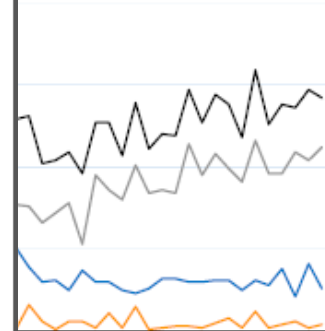
The team at the stand with Vice Chair (Ricardo Lopez Cruz) and our colleagues from The Netherlands.

QUALITY ASSURANCE 2014

ably week-on-week. This graph shows the

used 2014.

— New Cells
— New Editions
— Updates
— Total



FINANCIAL ACCOUNTS

IC-ENC FINANCIAL RESULTS 2014

The financial results cover the period 1st January 2014 to 31st December 2014, following IC-ENC's transition to a financial year based on a calendar year.

TYPE (CURRENCY US DOLLARS \$)	2014 FORECAST	2014 ACTUAL	VARIANCE AGAINST FORECAST	COMMENTS
COSTS				
Staff Wages	-756,000	-718,657	-5%	IC-ENC UK Validator transferred to UKHO in-year, validation workload meant call-on arrangement established rather than full-time replacement.
Staff Activities	-272,000	-231,450	-15%	Cost effective options used
Information Technology	-220,000	-199,439	-10%	DMD replacement project begun, \$25k budgeted, costs to carry forward to 2015.
Accommodation	-44,000	-46,068	5%	
Financials	4000	6000	50%	
TOTAL COSTS	-1,288,000	-1,189,613	-8%	
REVENUE				
IC-ENC Fixed fee Value	\$1	\$1		
Annual Sales Volume	1,080,000	1,164,301		Forecast assumed no increase in the IC-ENC membership, and only moderate volumes of new ENC's issued by existing members (clearly a 'worst case scenario')
Annual IC-ENC Revenue	1,080,000	1,177,586		Includes adjustment from end of 2013
FINANCIAL POSITION				
2014 Annual Balance	-208,000	-12,027		Revenue minus costs
2014 Extra Ordinary Settlement	0	0		
IC-ENC Cumulative Operating Balance	1,071,941	1,267,313		IC-ENC's cumulative financial position. Higher revenue and lower costs, have resulted in higher than forecast operating balance at end of 2014.

GENERAL COMMENTS

The \$1 fixed fee has generated revenue broadly equivalent to the IC-ENC annual cost of operation.

The IC-ENC Cumulative Operating Balance is larger than forecast, confirming IC-ENC's financial sustainability and provides service improvement options – to be presented to the Steering Committee.

IC-ENC Case Study

Egyptian Navy Hydrographic Department – RENC Experiences

Agenda

- ▶ Case study: ENHD RENC experiences
 - IC-ENC membership process
 - ENC Production Support and Validation
 - ENC Commercial decisions...
 - What is happening today?...
 - Fulfilling the IC-ENC mission

Background

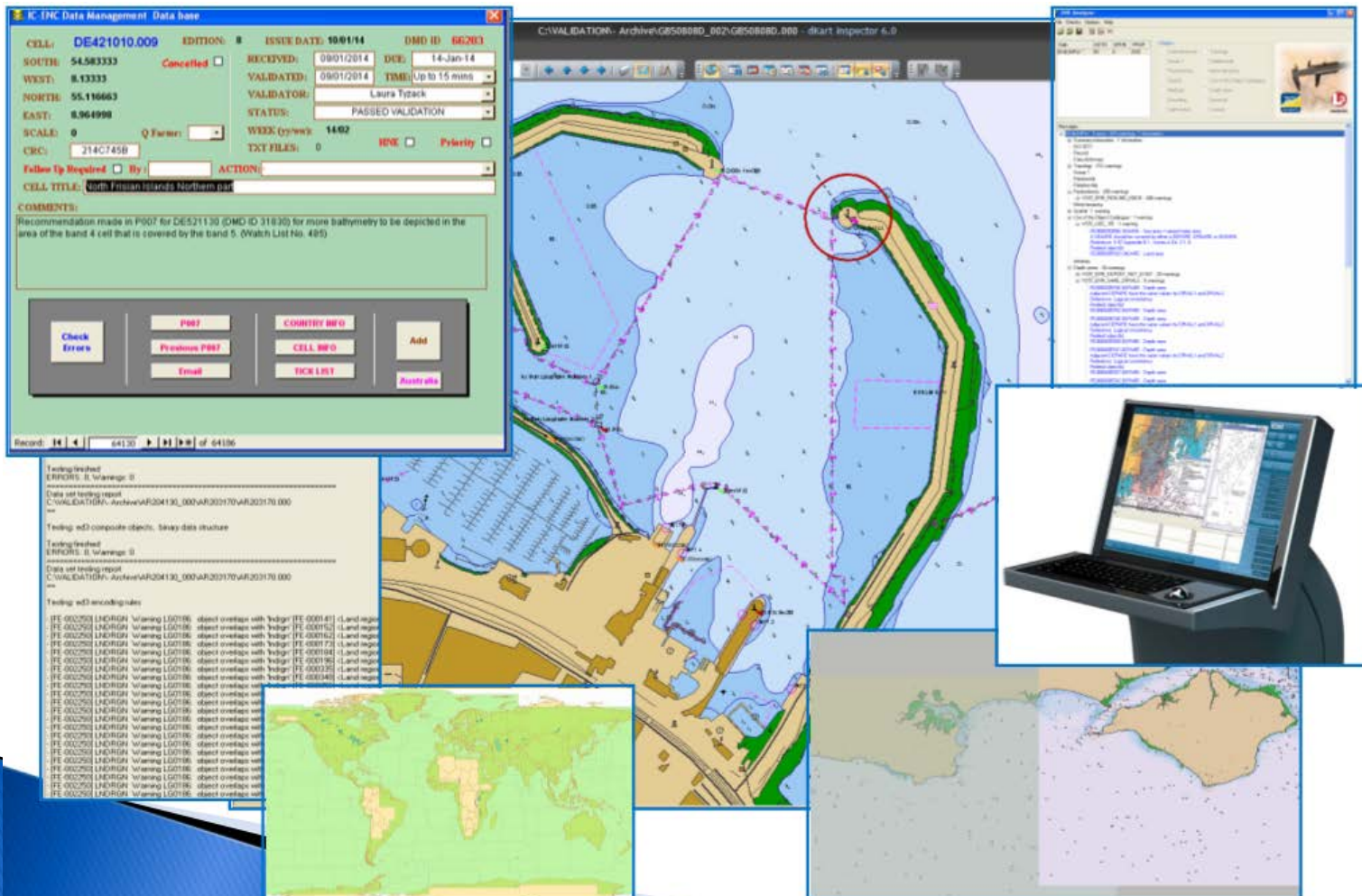
- ▶ First ENHD RENC conversations at NIOHC14 (Feb 2014)...Exploratory visit to IC-ENC office to discuss ENHD needs and IC-ENC services (March 2014)



Demonstration of Quality Assurance service

ic-enc

- ▶ Trial validations of ENHD ENC's



Attended IC-ENC Steering Committee, September 2014

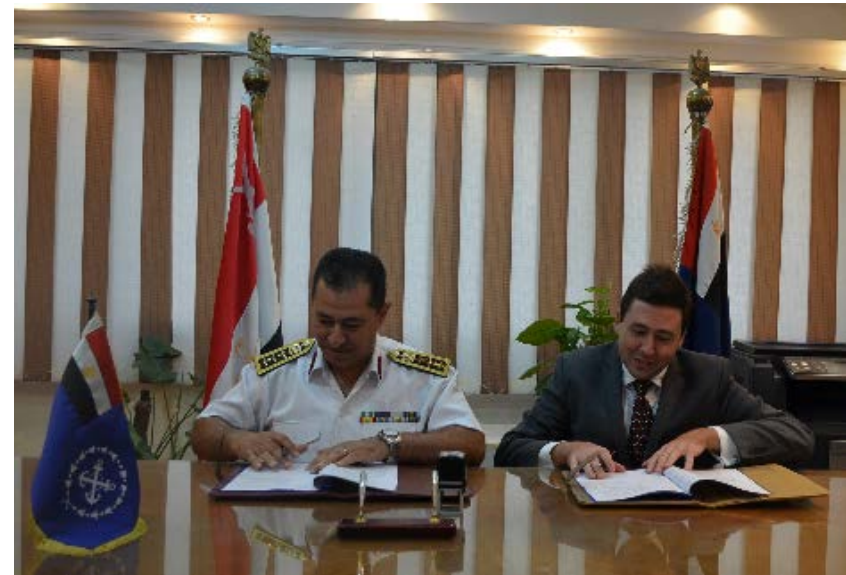
ic-enc

- ▶ The Governing Board of IC-ENC
 - lead by an elected Chairman
 - made up of a representative from each of the 35 IC-ENC member nations
- ▶ ENHD contributed to IC-ENC policy, budget setting, future direction



Membership workshop at ENHD offices, Alexandria, September 2014

- ▶ Review of membership agreement – full day discussions with the team



resulting in **formal signing** of Agreement

ENHD cartographic team

- ▶ During this time...
 - Internal team training on ENC production tools
 - ENC planning and scheming
 - Relations with other national organisations (data sources)

Attended ENC Validation Training Course, Feb 2015

ic-enc

- ▶ Captain Tamer Nada, Head of Cartographic & ENC production Division, attended IC-ENC Capacity Building course



February 2015 course delegates



Spain, Slovenia, Portugal, Mexico, **Italy**, Belgium,
Romania, South Africa, Netherlands, **Russia, Egypt**

Summary of IC-ENC ENC Validation Training course

- ▶ Provides the trainees with the **knowledge and skills required to carry out ENC validation** at their ENC production offices
- ▶ Builds **strong working relationships** between HO production office and IC-ENC Data Quality team
- ▶ Builds strong working relationships **between the trainees**

March – June 2015

ENC Production Support

- ▶ A specific IC-ENC Validator has been providing bespoke support to ENHD (Mr Max Summers)
- ▶ ENHD cartographic team worked closely with Max, making changes and improvements to the ENC's
- ▶ Use of the IC-ENC Errors Database

IC-ENC Errors Database

ic-enc

[Back to Site](#) ▶ [ERRORS](#)



ic-enc

List

lights

Attribute 'COLOUR' must be...

Attribute 'LITCHR' must be g...

Attribute 'ORIENT'

Attribute 'SIGGRP' must be ...

Attribute 'SIGPER' must be ...

ERROR 95:

LG0022: (T1503)

LG0022: (T1750)

LG0022: (T1750)

LG0022: (T1755)

LG0033: (T1781)

LG0043: (T1778)

LG0044: (T1778)

LG0074: suspicious gap

LG0074: (T1645)

LG0080

LG0085

LG0086: (T0542)

LG0087: (T0065)

LG0100: (T0507) mandatory...

LG0100: (T0507) mandatory...

LG0100: (T0507) mandatory...

List

Filter the list...

ERR_SPEDGE]

ERR_WRONG_USAGE]

Error (3, 2)

Error (3, 9)

Error (5, 2)

Error (5, 4)

Error (5, 5)

Error (5, 6)

Error (5, 9)

Error (5, 10)

Error (6, 2)

Error (6, 4)

Error (6, 6)

Error (6, 7)

Error (6, 8)

Error (6, 9)

Error (6, 10)

Error (6, 11)

Error (6, 13)

Error (6, 15)

ERROR

EXAMPLE

Error (5, 5)

Error (5, 5) in object FE0000001987 (class HULKES) at hex offset 00001663: Inadmissible attribute in object: CONDTN.

DESCRIPTION

HO TO CORRECT:

Any incorrect object/attribute value combination that has a detrimental affect on the product.

Impact_Assess...

Variable impact depending on attribute, object and navigational importance of the actual object.

User_impact

Variable, depending on the attribute in question. If the attribute is illegal or unreadable this may affect the ECDIS display / interrogation of the object.

Ref

UOC 4.6.8

Cross_ref

VS57_ERR_RECFAIL

Object_Grouping

Attribution - all objects

Last_Updated

source

TRANSAS ECDIS

TYPE

HO MUST CORRECT / HO SHOULD CORRECT

Error_explanat...

An apparently invalid attribute has been

DESCRIPTION...

HO MUST CORRECT:

Any incorrect object/attribute value combination that may lead to a potential dangerous situation. E.g unreadable DF

Validator_Notes

The original classification was FAIL / ERRONEOUS

SEE EDBC_F_08_124.

When reviewing this error, look at the re

Required_action

If this error has been reported genuinely attribution of the object should be amended to conform to the S-57 Standard. When assessing the error remember that there may be other software test errors (both Dkral Analyzer) that refer more specifically to the same problem. If so, use these other er

Cross_referenc...

c_list

DESCRIPTION

HO TO CORRECT:

If the encoded object class does not exist in S57 Appendix A (Object Catalogue) Chapter 1 or its use is not permitted in S57 Appendix B.1 (ENC Product Specification)

Impact_Assess...

DESCRIPTION...

HO MUST CORRECT:

If the encoded object class does not exist in S57 Appendix A (Object Catalogue) Chapter 1 or its use is not permitted in S57 Appendix B.1 (ENC Product Specification)

ERRONEOUS:
If the encoded object class does exist in S57 Appendix A (Object Catalogue) Chapter 1 and its use is permitted in S57 Appendix B.1 (ENC Product Specification)

ic-enc

March – June 2015

- ▶ ENC Validation and product improvement action – from navigator's perspective



ANNEX B – Sample Validation Report (6 pages)

Cell Information:

Cell Name – XY4561
Edition Number – 6
CRC – CFCC101B

Validated by:

Name – Shirley See
Phone – (+44) (0) 11
E-Mail – shirley@ic-enc
Validation Date – 25

VALIDATION CONC

NOT ACCEPTED FOR B
agreed in the Pastorek

CORRECTION REQ

The following data issue
the ENC is released:

ISSUE/CHARACTER

The following warnings in the test of the ENC are
known to "test" some of
information already in the
Therefore, the issue "Car
of this issue before the

IFC-0011001 DEAF

new 0002 +Gee area

IFC-0011001 DEAF

new 0004 +Gee area

IFC-0011001 DEAF

new 0004 +Gee area

IFC-0011001 DEAF

new 0004 +Gee area

IFC-0011001 DEAF

new 0004 +Gee area

CORRECTION REQUIRED AS SOON AS PRACTICABLE:

The following data issue has been identified
category which you have agreed to check or
believe it is unnecessary to withhold the data
recommended that you correct it as soon as p

SMALL GAPS

XY456126.000, Edition 6 Scale: 4500

There are two extremely small gaps between it
to anomalous geometry at the corner of the d
in the adjacent chart.

When merging over such gaps, some ENC
available usage, and then zoom back in to
"baking" can be discovered to the marker.
www. The frequency of this possible situation is
the gaps when you have a moment.



Chart	Proj...	Source
XY456126	1	S-57/3 [L...]
XY456126	2	S-57/3 [L...]



Chart	Proj...	Source
XY456126	1	S-57/3 [L...]
XY456126	2	S-57/3 [L...]

Chart	Proj...	Source
XY456126	1	S-57/3 [L...]
XY456126	2	S-57/3 [L...]

OBSERVATIONS REGARDING OTHER ENCs:

When validating this cell, the following issues were identified or
which we feel merit your attention when the subject of ENC, the

Vertical Consistency

XY321496, Edition 6

There is a small (20 to 30' depth) area on E5403440 which is shown
area on E5403440 (see the screenshot below). Please amend the
ENC to reflect this.



Chart	Proj...	Source	Scale	Depth	SRM	Number of ...	Depth
XY321496	1	S-57/3 [L...]	4500	000	1	0	27.000000
XY321496	2	S-57/3 [L...]	4500	000	1	0	27.000000

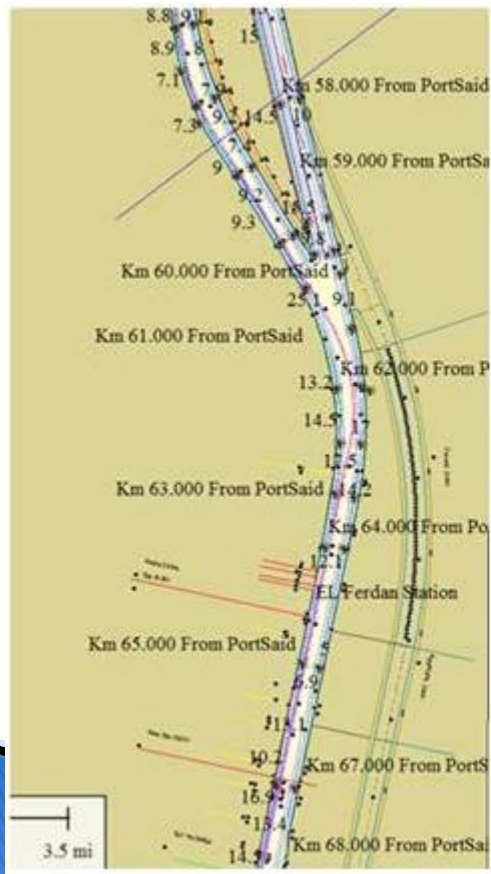
XY321497, Edition 6

CT NAME: E5403440 (P5403440) on XY321497 is not currently defined on XY321497. As an
adjacent CT NAME is shown on the adjacent band 3, XY321496, please check to see if this
feature should also be shown on XY321497.

March – June 2015

ic-enc

- ▶ ENHD and IC-ENC focus has been on ENC coverage for the Suez Canal, because of the new channel opening on 6th August 2015



ENHD decided on its commercial policies:

- ▶ SENC distribution - YES
- ▶ Pay As You Sail distribution - YES
- ▶ Set the wholesale price - YES
 - ▶ (IC-ENC retains a fixed fee per sale to cover operating costs; this is \$1 per annual subscription)

What is happening **TODAY**?

- ▶ IC-ENC is very pleased to announce that **today**, 2nd July 2015, the new ENHD ENC's are to be sent to IC-ENC Distribution partners:

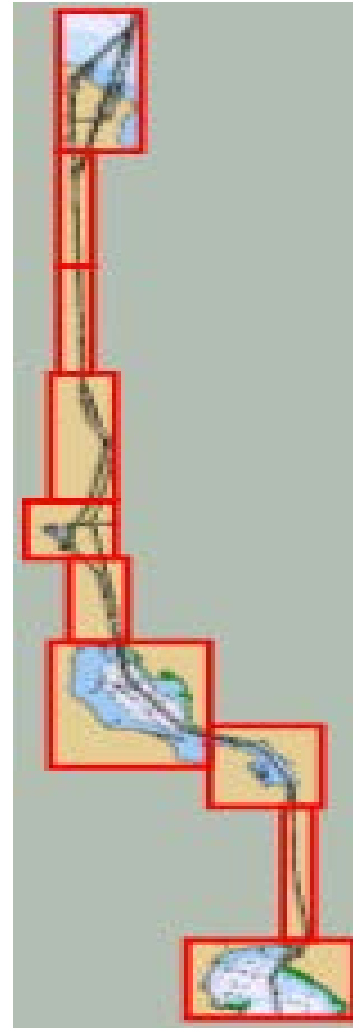


Replacement of existing coverage

Existing
coverage
(by
UKHO)



New
coverage
(by
ENHD)



IC-ENC
facilitates this
process to
ensure it is
seamless.

Existing users
of ENC's in this
region are
therefore
ensured of
uninterrupted
supply of ENC's
and updates.

ic-enc



Achieving the IC-ENC mission ic-enc

Our Mission: To provide services, at a low cost, to national Hydrographic Offices that ensure their ENC's are:

- compliant to the international Standards
- consistent across the global dataset
- readily available for use



Summary

ic-enc

- ▶ RENCs can provide significant benefits to HOs at each stage of the ENC cycle:
 - ▶ Production, Quality Assurance, Distribution
- ▶ ENHD's ENC programme has developed at a significant pace through ENHD focused efforts, and via RENC support
- ▶ Example of what is possible when we have a fixed deadline!!

