



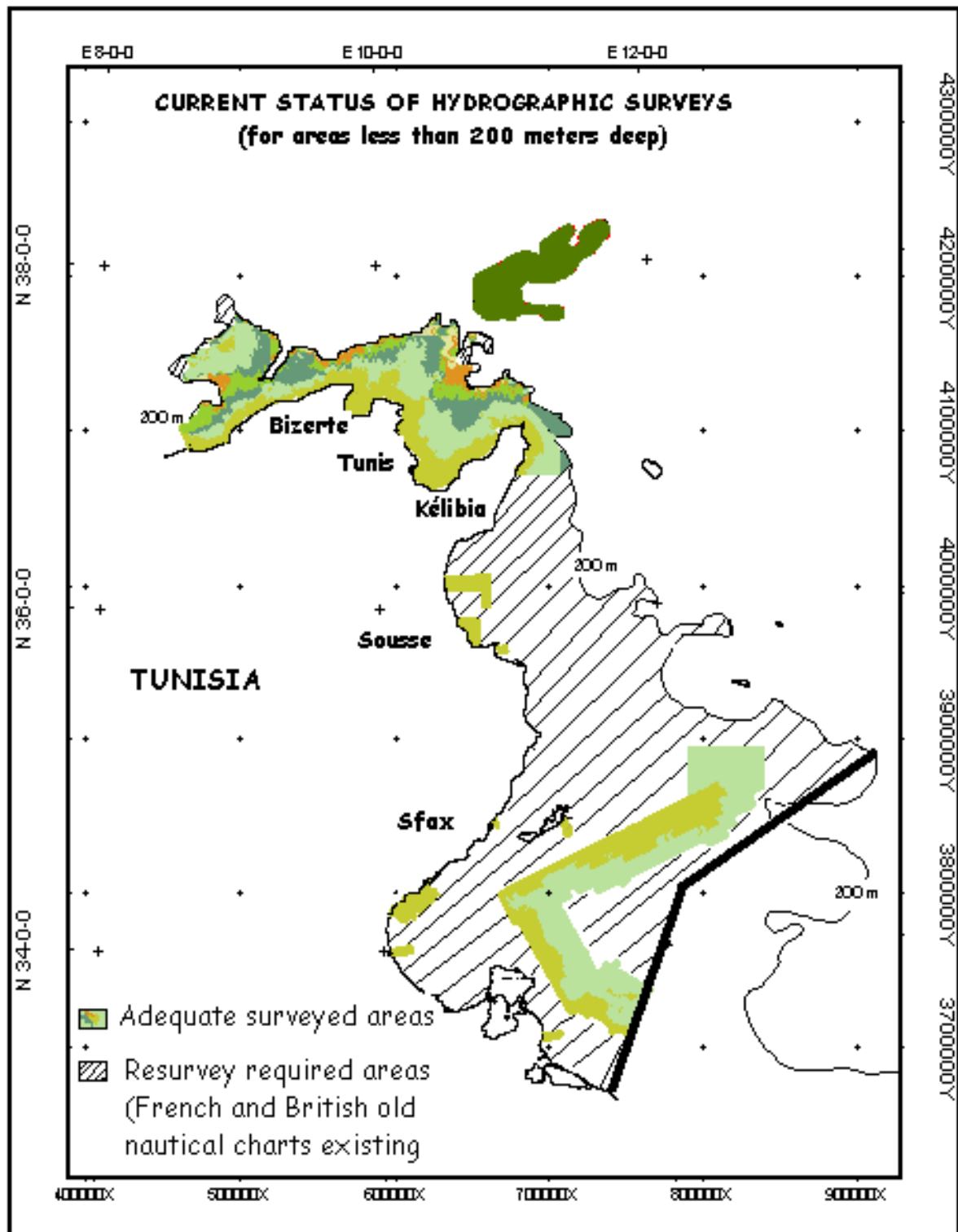
Tunisian National Report
19th conference of the Mediterranean and Black Seas Hydrographic
Commission (MBSHC)
Batumi / Georgia 30 June-02 July 2015

1. Hydrographic Office / Service: Tunisian Navy Hydrographic and Oceanographic Center – Centre d'Hydrographie et d'Océanographie de la Marine Nationale.
2. Surveys: Coverage of new surveys. **See appendix 1 and 2– voir annexes 1 et 2**
New technologies and /or equipment: **Knudsen SBES 6000m system, GPS Trimble SPS461.**
New ships: **None - Néant**
Problems encountered: **None - Néant**
3. New charts & updates: ENC's: **13 cells covering the north of Tunisia – 13 cartes couvrant le nord de la Tunisie**
ENC Distribution method: **Tunisian ENC's are distributed by Jeppesen and UKHO– Les ENC sont distribuées par Jeppesen et par l'Office Hydrographique du Royaume-Uni.**
RNC's: **None - Néant**
INT charts:
Published: **INT 3208 with the Algerian hydrographic Service, – INT 3208 avec le service hydrographique Algérien.**
Côtes d'Algérie et de Tunisie « de Ras El Hadid à Cap Zebib »
Echelle 1/250 000 (Nouvelle Publication).
In progress: **INT 3210 with Italian Hydrographic Institute, INT 3210 avec l'institut hydrographique Italien.**

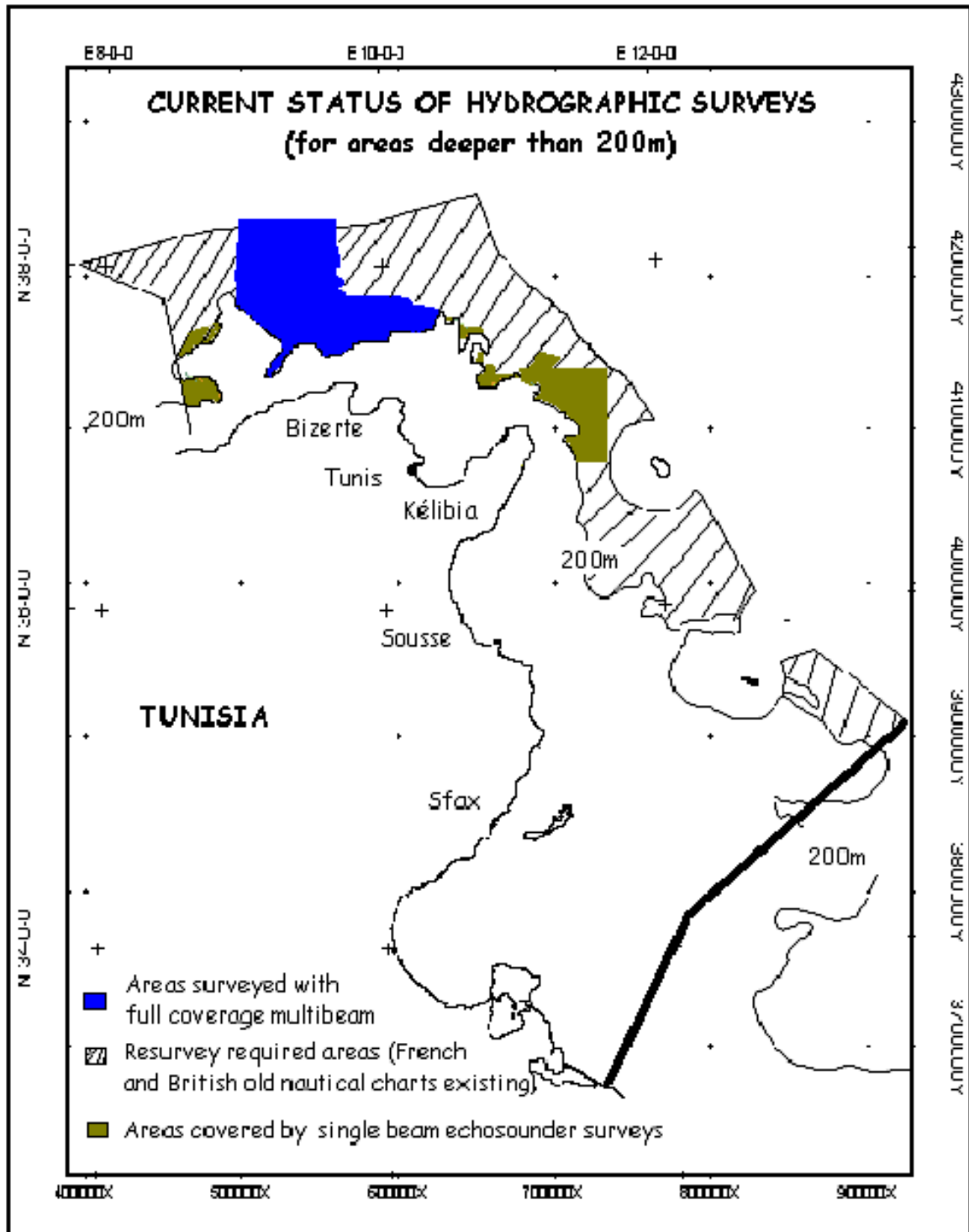
National paper charts: **one 1/50000 chart, five 1/75000 charts, one 1/150000 and nine large scale charts covering the north of Tunisia – une carte 1/50000, cinq cartes 1/75000, une carte 1/150000 et neuf cartes de détails couvrant le nord de la Tunisie.**
Other charts, e.g. for pleasure craft: **None - Néant**
Problems encountered: **None - Néant**
4. New publications & updates: New Publications: **Tide table 2015– Annuaire des marées 2015. Light list of Tunisian coast 2015- Livre des feux des cotes Tunisiennes 2015.**
Updated publications: **Notices to mariners - Avis aux navigateurs (Bi-mensuelle).**
Means of delivery, e.g. paper, digital: **Paper, Digital**
Problems encountered: **None - Néant**
5. MSI Existing infrastructure for transmission: **Kelibia Navtex station – Station Navtex de Kelibia.**
New infrastructure in accordance with GMDSS: **None - Néant**
Problems encountered: **Kelibia Navtex station is not operational for the moment due to technical problems – La station Navtex de Kelibia n'est pas actuellement opérationnelle à cause de problèmes techniques.**
For the moment, The CHOMN broadcast the MSI via Malta station.

6. S-55 Latest update (Tables) **See appendix 3– voir annexe 3**
7. Capacity Building Offer of and/or demand for Capacity Building: **None - Néant**
 Training received, needed, offered:
 Received: **Course in Cartography, Hydrography and Related Training CHART Taunton, UK (7 September – 18 December 2015) – Cours sur la cartographie, hydrographie et formation associée - Taunton, RU (7 Septembre - 18 Décembre 2015).**
 Offered: **None - Néant**
- Status of national, bilateral, multilateral or regional development projects with hydrographic component. (In progress, planned, under evaluation or study)
 In progress: **INT 3208 with Algerian hydrographic Service, bilateral accord signed 1st Mars 2005 - INT 3210 and INT 3212 with Italian Hydrographic Institute, bilateral accord signed 18th June 2009 – INT 3208 avec le service hydrographique Algérien, accord bilatéral signé le 1 mars 2005 - INT 3210 and INT 3212 avec l'institut hydrographique Italien, accord bilatéral signé le 18 juin 2009.**
 Under study: **INT 3216 with Libyan hydrographic service – INT 3216 avec le service hydrographique Libyen.**
 Definition of bids to IHO CBC: **None - Néant**
8. Oceanographic activities General: **None - Néant**
 GEBCO/IBC's activities: **None - Néant**
 Tide gauge network: **A network of six tide gauges, monitoring the mean sea level variation – Un réseau de six marégraphes, Observation du changement du niveau moyen de la mer**
 New equipment: **Water level Pressure Gauge System: In-situ Level troll 700, 100 PSI**
ADCP Current Meter System: RDI Workhorse 300-600m
 Problems encountered: **None - Néant**
9. Other activities Participation in IHO Working Groups: **None - Néant**
 Meteorological data collection: **None - Néant**
 Geospatial studies: **None - Néant**
 Disaster prevention: **None - Néant**
 Environmental protection: **None - Néant**
 Astronomical observations: **None - Néant**
 Magnetic/Gravity surveys: **None - Néant**
10. Conclusions **None – Néant**

APPENDIX 1



APPENDIX 2



APPENDIX 3

IHO SPECIAL PUBLICATION S-55
“STATUS OF HYDROGRAPHIC SURVEYING AND NAUTICAL CHARTING WORLD-WIDE”
QUESTIONNAIRE

Country: **Tunisia**

Date of validity of information: June 2015

Are any amendments required to your entry in the IHO Year Book? If so, enter below.
Update is particularly important on your outsourcing strategy and on your ability to provide contract survey or charting support to other states in your RHC area.

1. Additional phone numbers: + 216 72 510 193

2. Name and rank of the actual head: Captain Monjed ZITOUNA
Director of Tunisian Navy Hydrographic and
Oceanographic Center

3. Actual Tonnage: 309 281

4. Number of charts published: 13 by the Tunisian Navy Hydrographic and Oceanographic Center

1. HYDROGRAPHIC SURVEYING

1.1 Status of hydrographic survey of all navigable waters, including internal waters, out to the limits of the EEZ: (Please refer to the guidance given in the introductory text "Analysis of the Status of Surveys".)

Survey coverage, where:

A = percentage which is adequately surveyed.

B = percentage which requires re-survey at larger scale or to modern standards.

C = percentage which has never been systematically surveyed.

	A	B	C
Depths < 200 m	53%	47%	--
Depths > 200 m	43%	57%	--

Amplifying information:

1. Special national circumstances which influence the statistical break-down above (e.g. geographical factors such as narrow continental shelf or fringing reefs, or constraints such as areas of unstable seabed which require a routine resurvey programme).

All the Tunisian waters were previously surveyed by the SHOM – France until 1952.

2. Significant shortfalls in sea areas of high priority for maritime traffic

a. Maritime Shipping Routes

(1) International (i.e. between hub ports):

The resurvey of the northern maritime area is achieved.

The east maritime area is being resurveyed since 2010

b. Ports and Approaches:

Bizerte, Tunis, La goulette, Rades, Sousse, Sfax, Gabes and Zarzis ports and relative approaches had already been entirely covered with higher standards.

2. NAUTICAL CHARTING

If you do not have a nautical charting capability, but know which country/countries has/have assumed responsibility for the charting of your sea areas, please indicate details here:

Sixteen nautical charts had already been produced and two are scheduled to be produced at the end of year 2015. Until now, SHOM-France is editing nautical charts covering the Tunisian waters with TNHOC updating.

If you do have a nautical charting capability, complete the details below (Please refer to the guidance given in the introductory text "Analysis of the Status of Charting"):

2.1 Status of nautical charting within the limits of the EEZ

Coverage of charts published by your organisation, where:

A = percentage covered by INT series, or a paper chart series meeting the standards in M-4.

B = percentage covered by Raster Navigational Charts (RNCs) meeting the standards in S-61.

C = percentage covered by ENC's meeting the standards in S-57.

Purpose/Scale	A	B	C
Offshore passage/Small	--	--	--
Landfall and Coastal passage/Medium	25%	--	25%
Approaches and Ports/Large	30%	--	30%
Percentage of Group A showing depths in meters	100%		
Percentage of Group A referenced to a satellite datum	100%		

Amplifying notes:

According to the IHO (MBSHC), it was agreed that TNHOC will produce international charts as follows:

INT Chart 3208 in cooperation with the Algerian HO, New publication

INT Chart 3210 and 3212 in cooperation with the Italian HO surveyed at 60% (in INT 3210) and at 30% (in INT3212)

INT Chart 3214 to be produced by the TNHOC (surveyed at 40%).

INT Chart 3216 in cooperation with the Libyan HO

Significant gaps in coverage:

3. MARITIME SAFETY INFORMATION (MSI)

Fill in the tables to indicate the status of implementation of the services: Yes, No, Partial.

Use the Notes Columns to indicate services which are provided by another state, and facilities co-ordinated and/or shared with other coastal states.

(Please refer to the guidance given in the introductory text "Analysis of the status of MSI".):

NAVIGATIONAL INFORMATION (S-53)

SERVICE	Yes	No	Partial	NOTES
LOCAL WARNINGS	X			
COASTAL WARNINGS	X			
NAVAREA WARNINGS	X			Through NAVAREA III
INFORMATION ON PORTS AND HARBOURS ¹	X			

Tunisian NAVTEX station is not operational for the moment.

GMDSS IMPLEMENTATION (IMO Publication 970 - GMDSS Handbook²)

SERVICE	Yes	No	Partial	NOTES
Master Plan				*
A1 Area				*
A2 Area				*
A3 Area				*
NAVTEX	X			
SafetyNet				*

* The GMDSS IMPLEMENTATION responsibility lies on the merchant marine administration.
All Tunisian merchant marine vessels comply with the IMO recommendations regarding the GMDSS implementation.

¹ Confirm that a system exists for passage of information on changes in ports and harbours to the responsible charting authority.

² See also the guidance in Navigational Publications published by Hydrographic Offices e.g. ALRS 5.

4. NATIONAL PRIORITIES FOR INTERNATIONAL AND OR REGIONAL CO-OPERATION OR ASSISTANCE.

4.1 If international or regional projects are underway in your waters, please indicate here:

4.2 Indicate below any priorities for co-operation or assistance:

a. Projects meriting IHO liaison with international funding agencies:

(1) Regional co-operative projects:

- indicate involvement of RHC, or other Member and non-Member states.

According to the MBSHC, international charts are being scheduled to be produced as follows:

3208 INT	: Cooperation with the Algerian HO
3210 INT – 3212 INT	: Cooperation with the Italian HO
3214 INT	: Scheduled to be produced by the TNHOC
3216 INT	: Cooperation with the Lybian HO

(2) National projects:

- indicate any bilateral co-operation with Member or non-Member states.

b. Requirements for training assistance:

- use M-5 and S-47 to identify level of qualification and course required.

(1) Hydrographic surveying:

Training for two officers in a recognized category A hydrographic course

c. Requirements for assistance with procurement of equipment:

(1) Technical advice on procurement options:

Maintain the technical cooperation with NAVOCEANO-USA, SHOM-France, IIM-Italy, IHM-Spain, UKHO-UK and HI-Portugal.

(2) Transfer of equipment:

Maintain the technical cooperation with NAVOCEANO-USA and develop this kind of assistance with SHOM-France.

**Signature: Captain Monjed ZITOUNA
Director of the Tunisian Navy
Hydrographic and Oceanographic Center**

Date: 23 June 2015

