

# MEDITERRANEAN AND BLACK SEA HYDROGRAPHIC COMMISSION

## MSDI Report

*MBSHC21-06.6 MSDI AMBASSADOR*

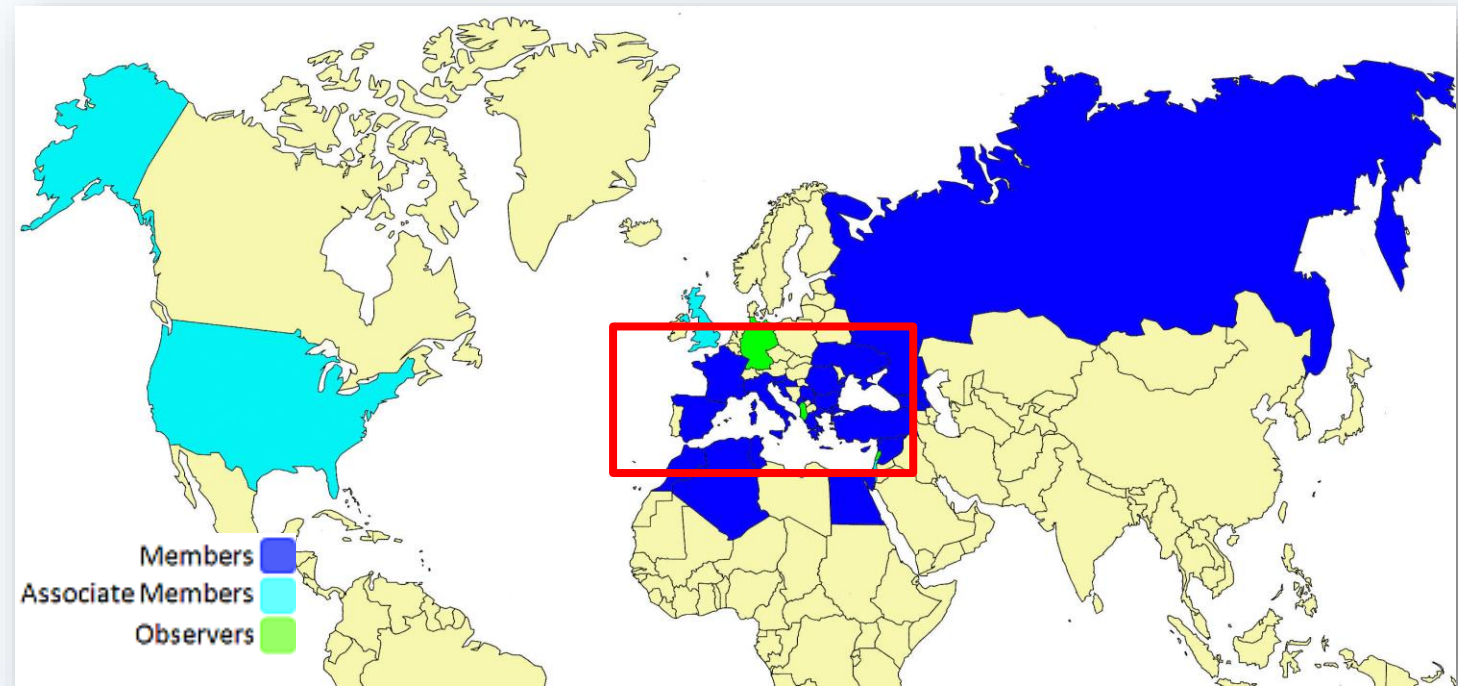


# Introduction

**MSDI Ambassador** of MBSHC (decision MBSHC 20/01) → Italy

**REGIONAL PRE-CONDITION:**

- Countries peculiarities
- Geography of the basin



# RHC MSDI Ambassadors

---

- Promote MSDI and to help MSs to prepare the national reports with respect to the status of MSDI
- MSDI as a RHC agenda item (done!)
- National MSDI report prepared by each Member State for submission to every RHC
- The report should incorporate the status of MSDI, plans for involvement in MSDI and challenges facing the HO

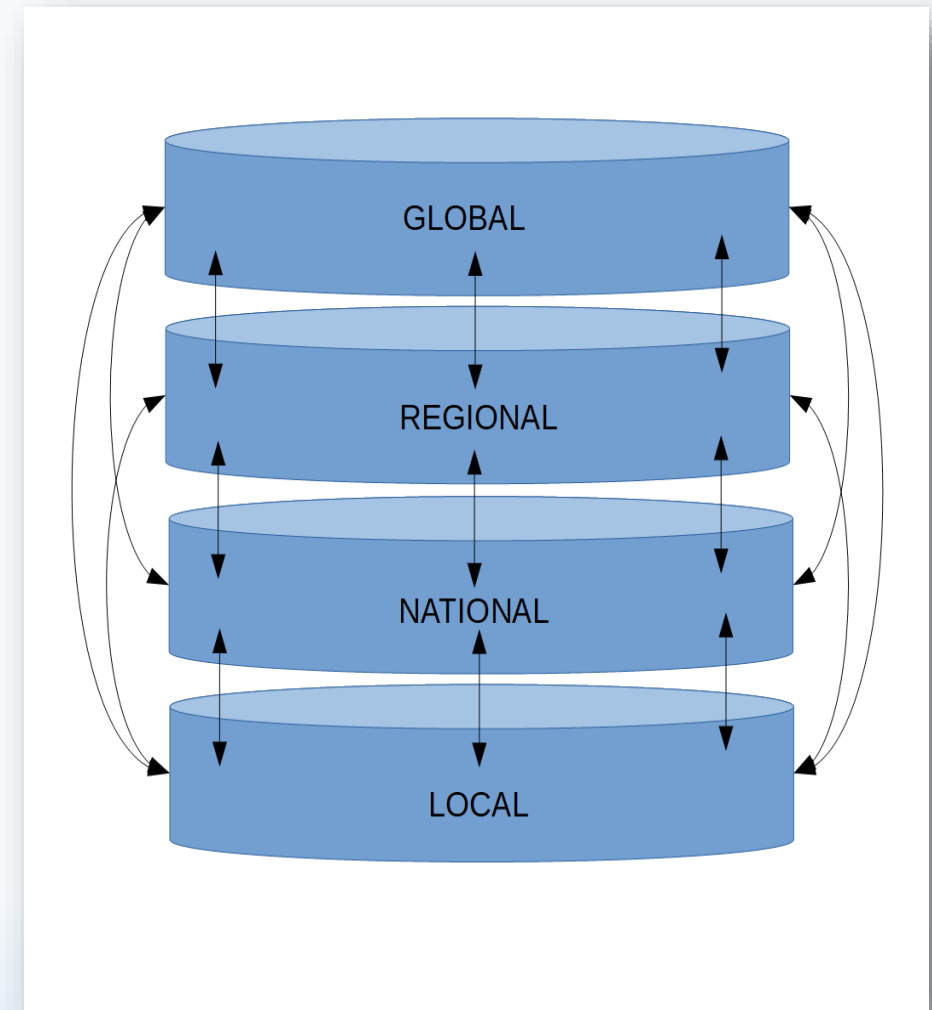
**See IRCC 11 MSDI report**



# References

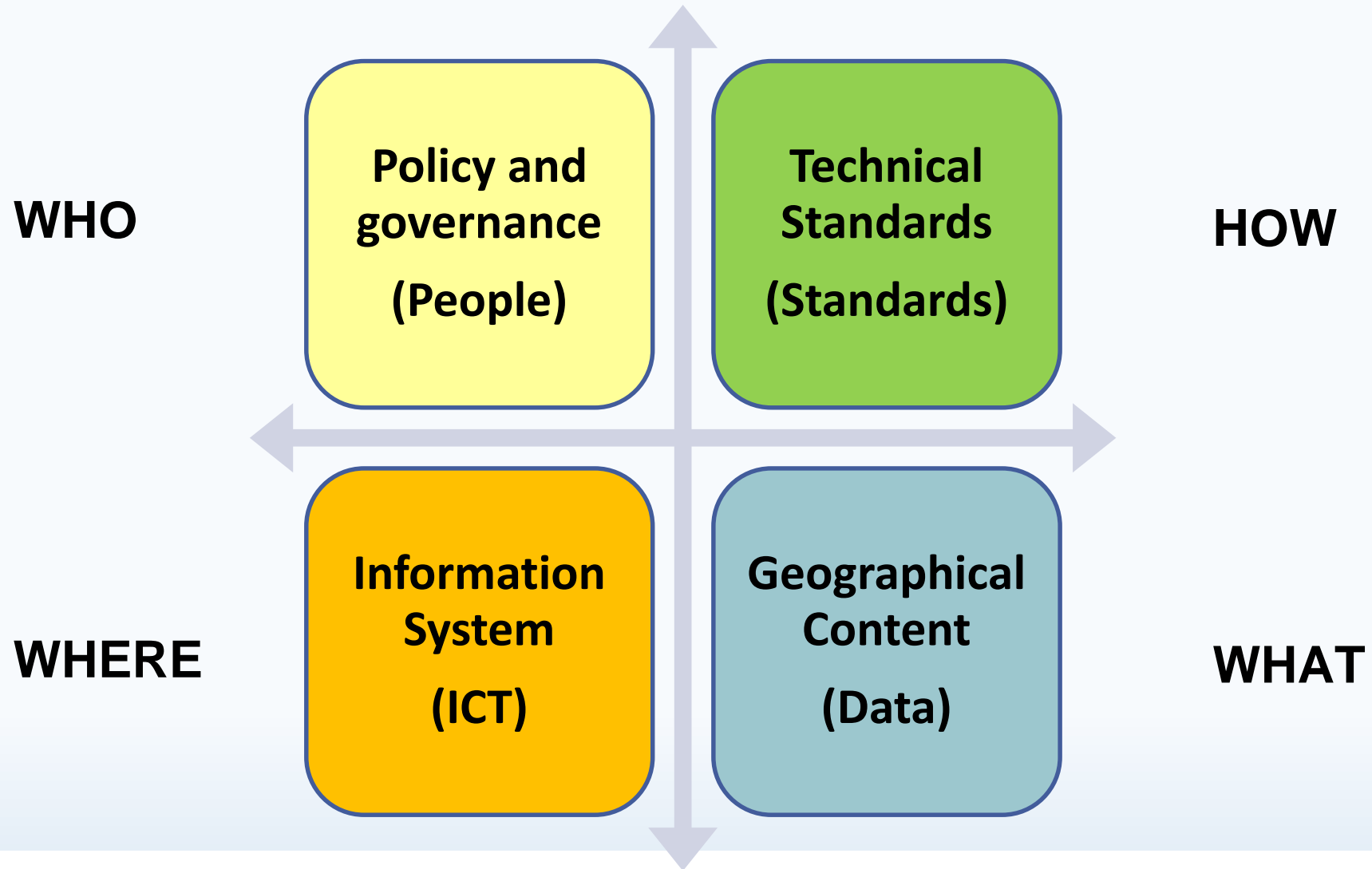
## C-17 v.2.0

- Spatial Data Infrastructures «The Marine Dimension» Guidance for Hydrographic offices (IHO CL 16/2018)
- **MSDIWG9**
  - Connection between national MSDI to global MSDI through Regional HCs



# MSDI pillars

---



# MSDI activities and achievements

## Communication and dissemination



# MSDI National Report

---

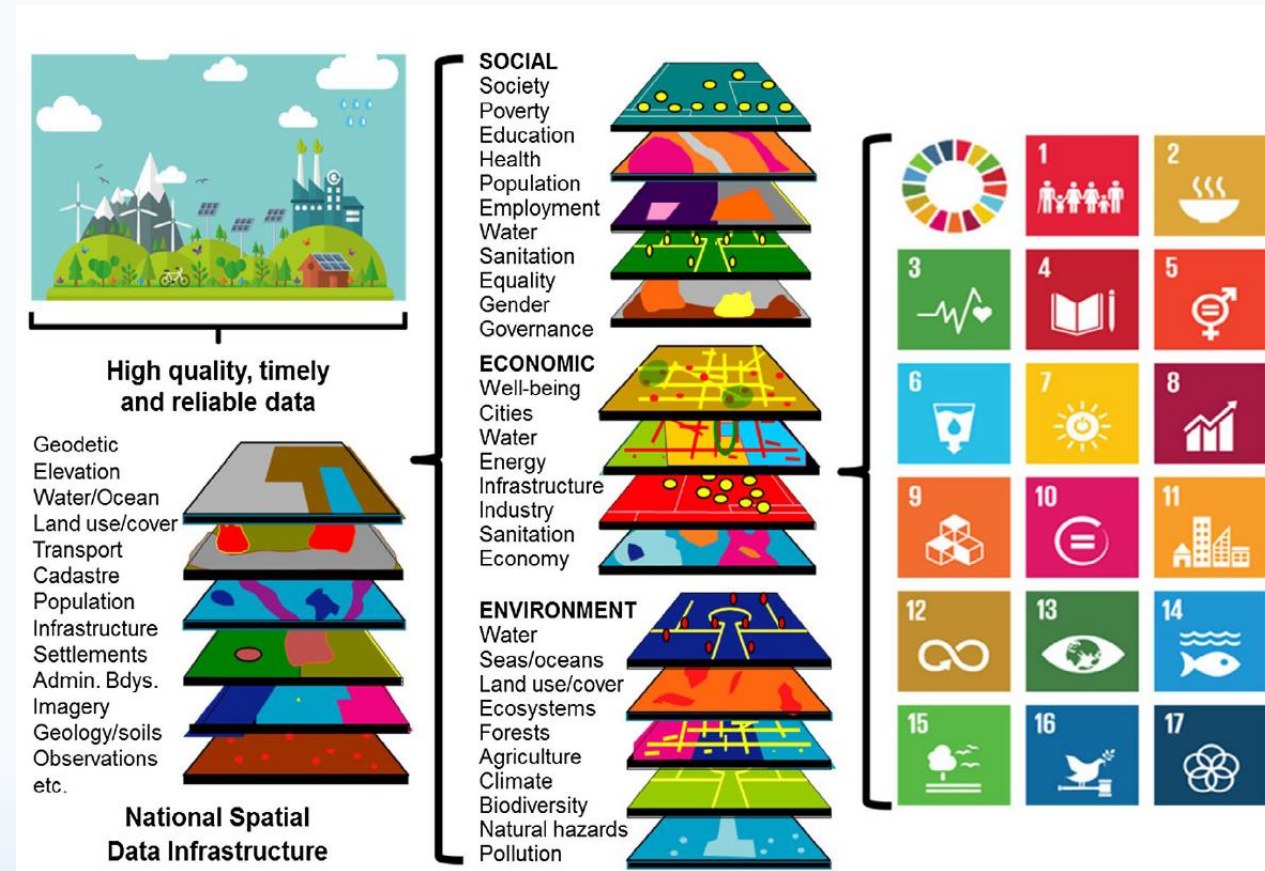
**It is recommended that the National Reports include the topics from **C-17, item 2.1** on what constitutes a MSDI:**

- Policy and Governance
- People & Organizations
- Enablers (the framework for data acquisition, management, updating and dissemination)
  - o Standards
  - o Technology
  - o Metadata
- IHO S-100 Universal Hydrographic Data Model
- Content
- Education and Learning



# Analysis

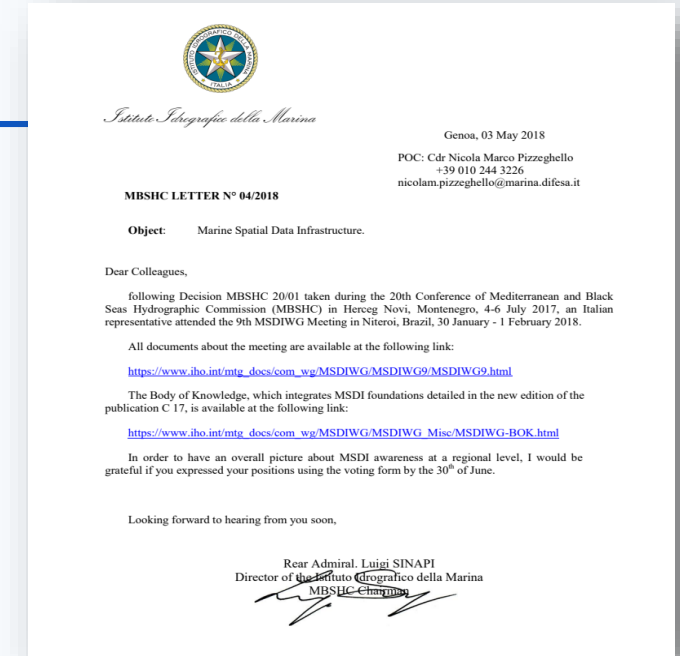
## Make the Ambassador aware of National MSDI Initiatives





# Regional Level Activities

- MBSHC CL 4/2018: questionnaire sent to MSs in order to **study/develop the link between different geographical levels of MSDI** (local, national, regional and global)
- MBSHC CL 09/2018: feedback to questionnaire



Annex to MBSHC CL 04/2018

03/05/2018

## **Status Update of Marine Spatial Data Infrastructure (MSDI) Implementations related to a Marine Spatial Architecture**

(to be returned to the E-mail: [iim.corsi@marina.difesa.it](mailto:iim.corsi@marina.difesa.it) by 30th June 2018)

The intent of the study is to determine the relative level of advancement of various countries of the MBSHC in the development of their MSDI. It also explores what is offered and what can be offered within a given resource framework. This means that the questions are intended to scope the scale of the MSDI resources required in their development.



# Questionnaire outcomes

---

- Application of MSDI to the Maritime domain
- Beyond Safety of Navigation
- Standards operationalization/dissemination (OGC, IHO, EU)
- Different MSDI initiatives
  - (eg. Internal to HOs, Regional SDI, INSPIRE, EMODNET, RENC MSDI)
- Role of authoritative data, open data, free data
- Cost of the infrastructure and the connected services
- Copyright, licencing, responsibility (legal framework)



# UN GGIM

---

- MBSHC MSDI Ambassador provided a presentation to **UN GGIM WG meeting on Marine Geospatial Information** (March 2019)



# MSDI training material

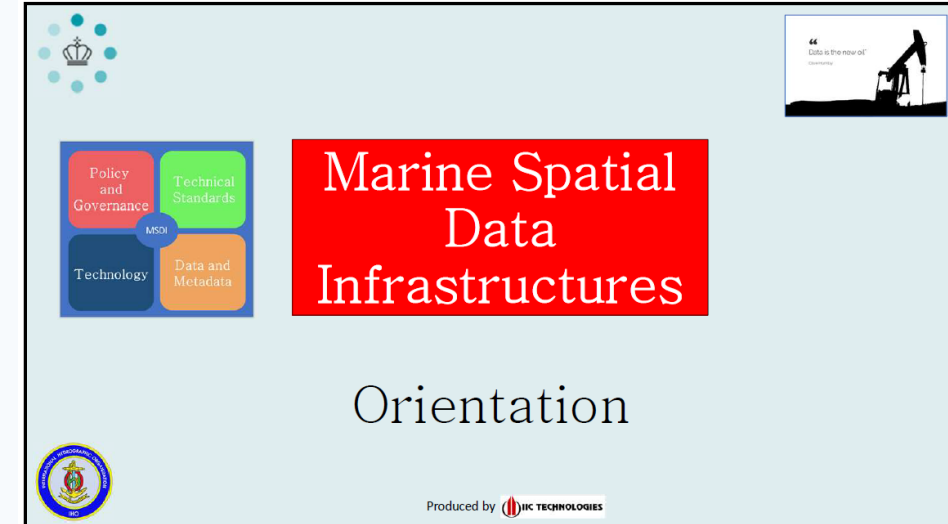
## Phase 1. MSDI orientation

- For students who are marine-focused, but have very little experience of MSDI concepts or practice.

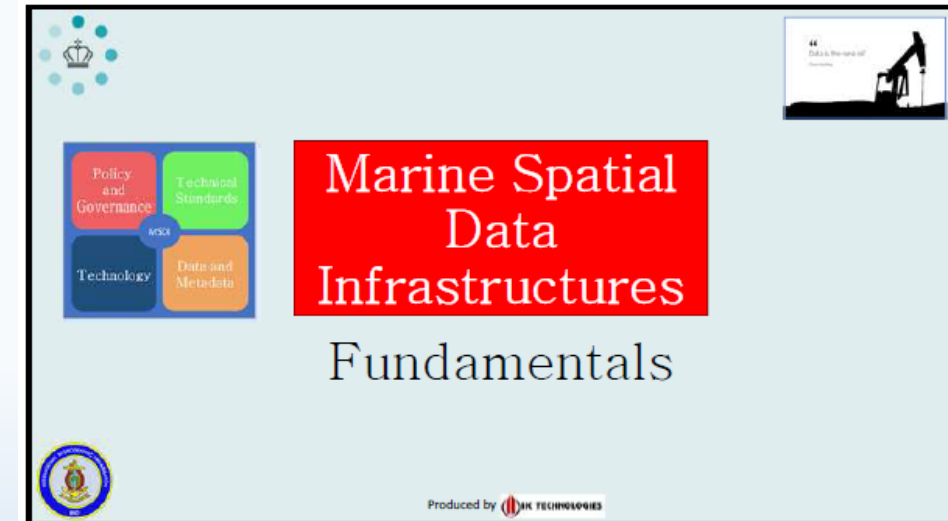
## Phase 2. Fundamentals of a MSDI

- For students who are marine geospatial professionals but who have very little experience of MSDI (one-day course)

**In preparation by MSDI WG**



This slide thumbnail represents the 'Orientation' phase of the MSDI training. It features a light blue background. In the top left corner, there is a logo consisting of a crown above a cluster of blue dots. Below this, a 2x2 grid of colored squares (red, green, blue, and orange) contains the text 'Policy and Governance', 'Technical Standards', 'Technology', and 'Data and Metadata' respectively, with 'MSDI' written in the center. To the right of this grid is a large red rectangle with the white text 'Marine Spatial Data Infrastructures'. Below the red rectangle, the word 'Orientation' is written in a large, dark blue font. In the bottom left corner, there is a circular logo of the International Hydrographic Organization. In the bottom right corner, it says 'Produced by IHO TECHNOLOGIES'. A small inset in the top right corner shows a black silhouette of an offshore oil rig against a white background with the text 'Data is the new oil'.



This slide thumbnail represents the 'Fundamentals' phase of the MSDI training. It has the same layout as the 'Orientation' slide, with a light blue background and the same logos and grid. The large red rectangle with the text 'Marine Spatial Data Infrastructures' is present. However, the word 'Fundamentals' is written in a large, dark blue font below the red rectangle instead of 'Orientation'. The bottom right corner also says 'Produced by IHO TECHNOLOGIES'. The same small inset in the top right corner shows a black silhouette of an offshore oil rig against a white background with the text 'Data is the new oil'.



# The MSI e-Learning course

## Two MSDI courses

- Orientation eLearning course
- Fundamentals eLearning course

### Marine Spatial Data Infrastructures

Concepts, definitions and examples

In preparation by MSDI WG



International Hydrographic Organization  
Organisation Hydrographique Internationale

**Marine geospatial data content**

**What is Data???**

**Vector Data: "Things"**

```
LIGHTS:
{
  CATLIT = 6
  COLOUR = 3
  INFORM = More than one
  SCAMIN = 55999
}
geometry:
{
  id = 6E42010000 [-40.5,36.2]
  ornt = null
}
```

**Raster Data and Imagery**

**Bathymetry: Point Clouds and Surveys**

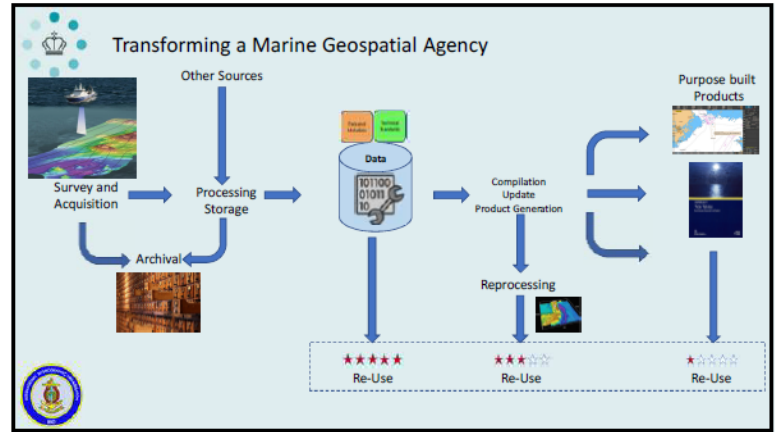
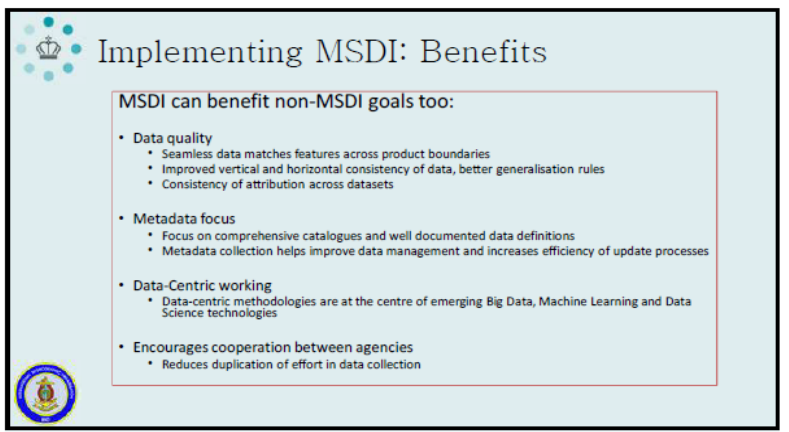
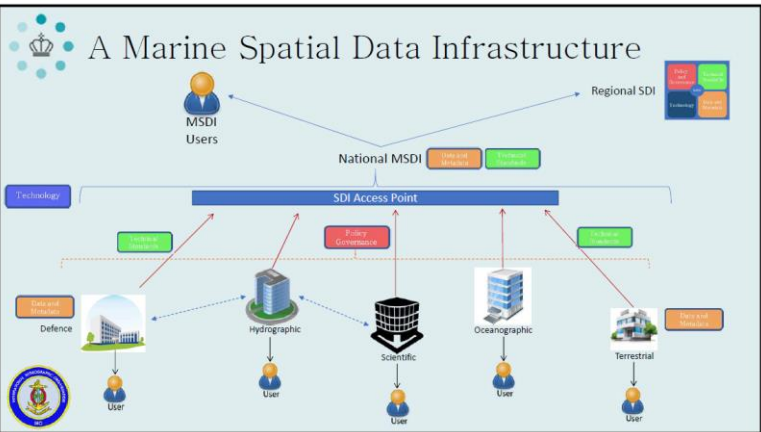
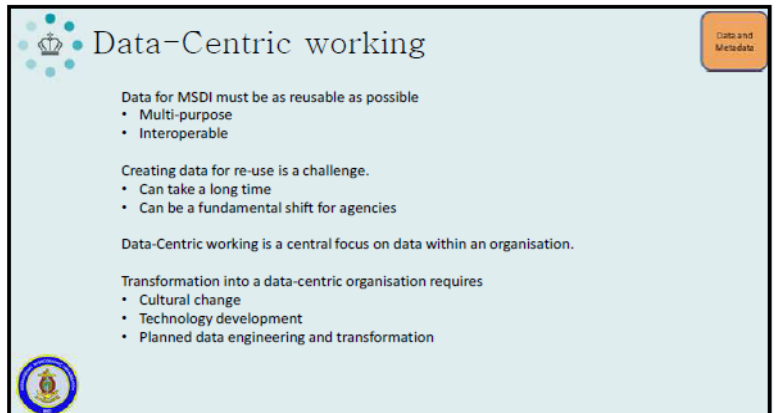
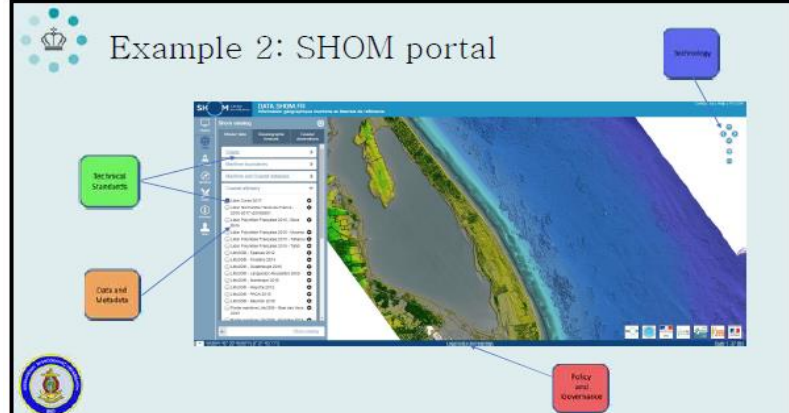
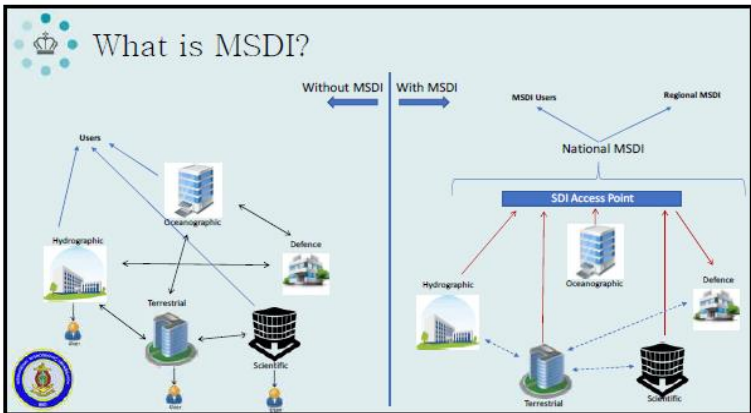
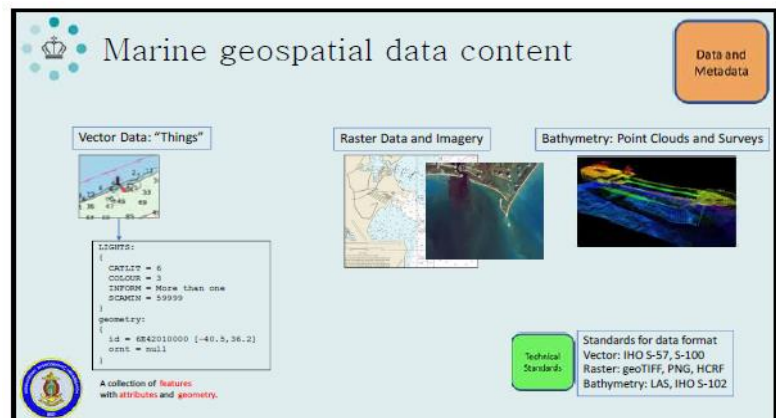
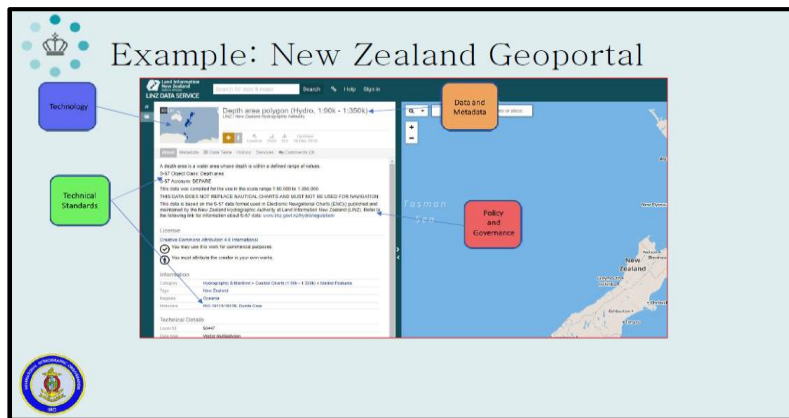
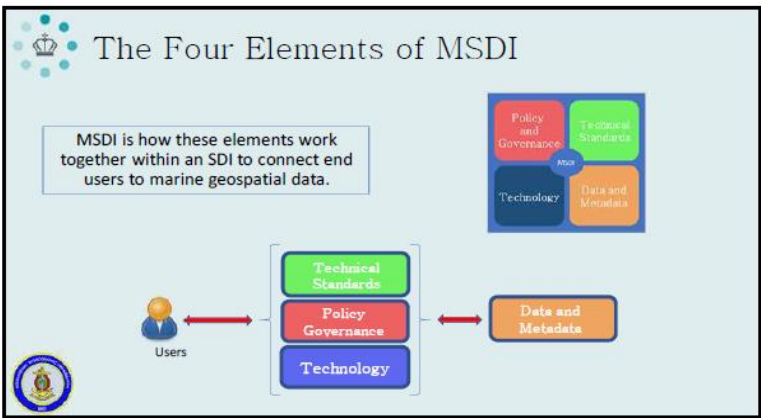
**Data and Metadata**

**Good for MSDI?:**

- Coastline
- Tidal Predictions
- Oceanographic
- Navigation Aids
- Obstructions and Wrecks
- Named Features
- Offshore installations

**orientation tk004.2**





# Action requested of MBSHC

---

The MBSHC is invited to:

- Encourage MSDI initiatives at National Level
- Make the Ambassador aware of National MSDI Initiatives
- Encourage training
- Note the report

