

National report of Iceland

The present report outlines and summaries the ICG-HD activities carried out in 2007 since the report was given on NHC meeting in Copenhagen last year.

Surveying activities 2007

The survey operations started in beginning of May and continued until 15th September. The main survey was carried out on the NW coast of Iceland for a two new charts no. 43 and 45. The survey around Westman Islands, which started 2006, continued for two weeks in July 2007. During this timeframe 6057 NM were surveyed, covering 1144 km². The total mileage during the season logged 8418.5 nm.

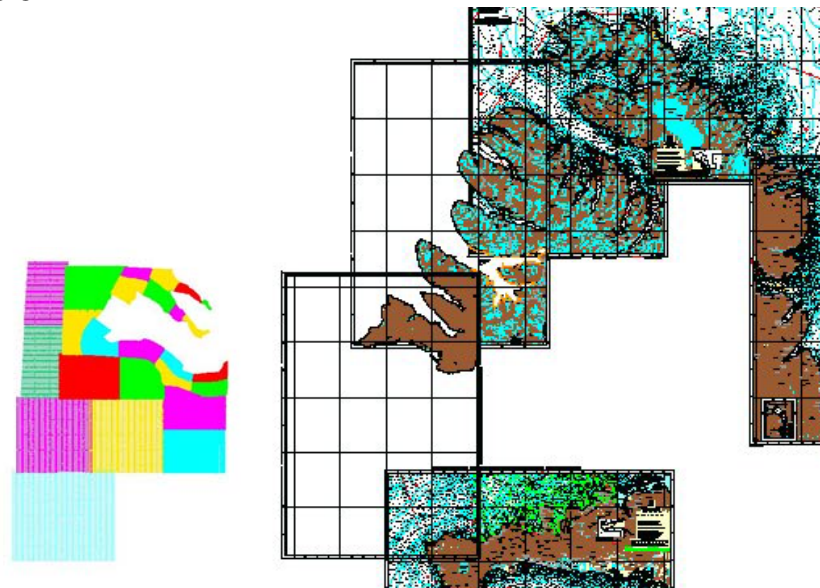


Figure 1 Planned charts No. 43 and 45 on the West Coast. Scale 1;100 000
Survey "sheets" for chart 43 (on the left).

Survey in 2007		
Singlebeam	520.9 nm.	281km ²
Multibeam survey	5535.8 nm.	863 km ²
Total survey	6056.7 nm.	1144 km²

Nautical Charts

New prints were made of 12 chart in 2007 and the following 10 New Editions (NE) and New Charts (NC) were published:

NO.	Title	Scale	Pub. date	
363	Hafnarfjörður	1 : 10 000	02/2007	NE
530 INT	Akureyri	1 : 10 000	02/2007	NE
714	Norðfjörður	1 : 10 000	02/2007	NE
716	Reyðarfjörður	1 : 10 000	02/2007	NE
423	Grundarfjörður	1 : 10 000	04/2007	NE
71 INT	Glettingan.-Stokksnes	1 : 300 000	06/2007	NC
810	Höfn	1 : 10 000	07/2007	NE
73 INT	Glettinganes-Hlaða	1 : 100 000	11/2007	NC
365	Akranes-Hafnarfj.	1 : 40 000	11/2007	NE
712	Seyðisfjörður	1 : 10 000	12/2007	NE

The publication of chart 73, INT 1111, was a significant milestone. The new chart replaces an old “Danish” chart which was first published in Copenhagen in 1944. The area covered by the chart was to a large extent resurveyed in 2003 and 2004.

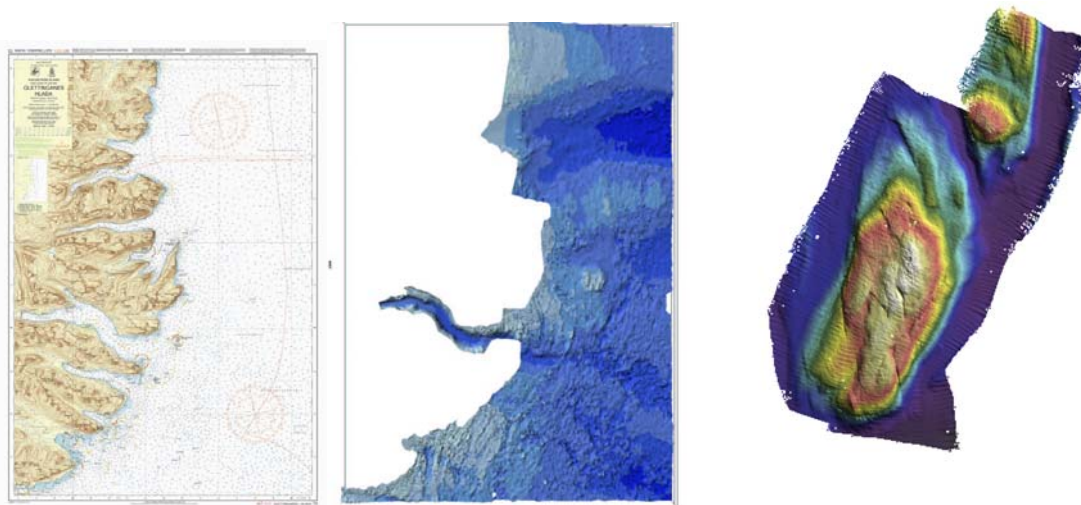


Figure 2 Chart No 73. Bathymetric image of the area covered and 3D image of an isolated shoal “Diana-boði” some distance off the coast.

INT Charts

Iceland has finished publishing the INT charts on its responsibility in Region D (NE-Atlantic Ocean) except chart INT 112 (Iceland – Greenland). This process has taken more time than expected but the main reason for this is that all the old

data had to be digitized and transformed from Reykjavik or Hjørsey Datum to WGS84 and the charts recompiled.

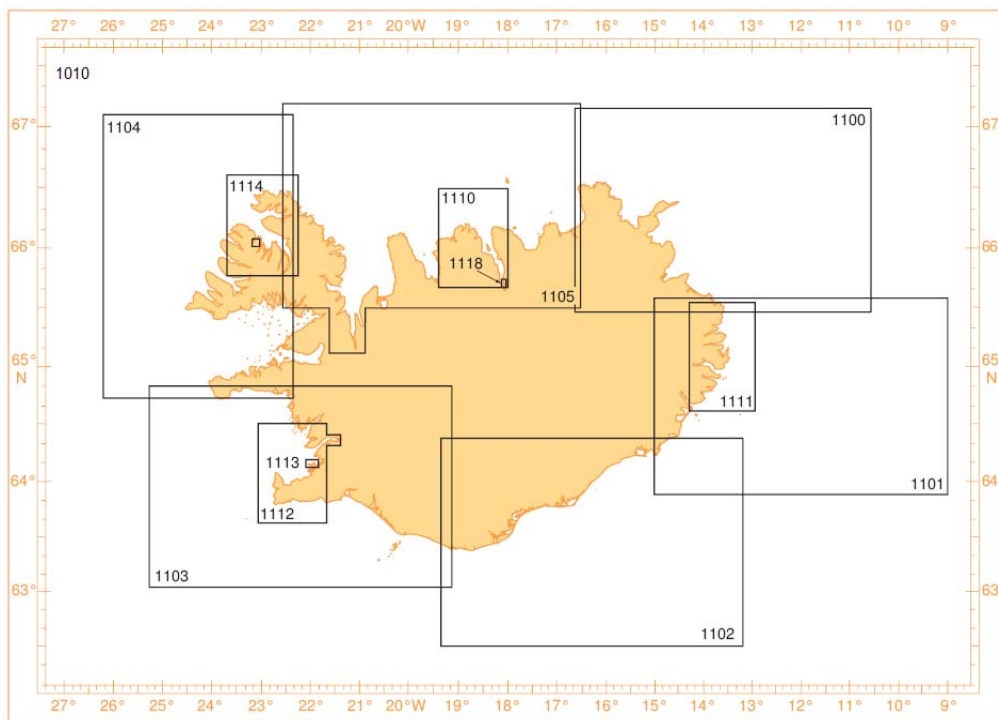


Figure 3 Published Icelandic INT charts

TSS – traffic separation schemes

Two traffic separation schemes, associated two-way routes and Areas to be Avoided off the southwest coast of Iceland have been adopted by the International Maritime Organization (IMO). These will be implemented at 0000 hours UTC on 1st July 2008. New editions of the 5 affected charts have been prepared and will be printed later this month – May 2008.

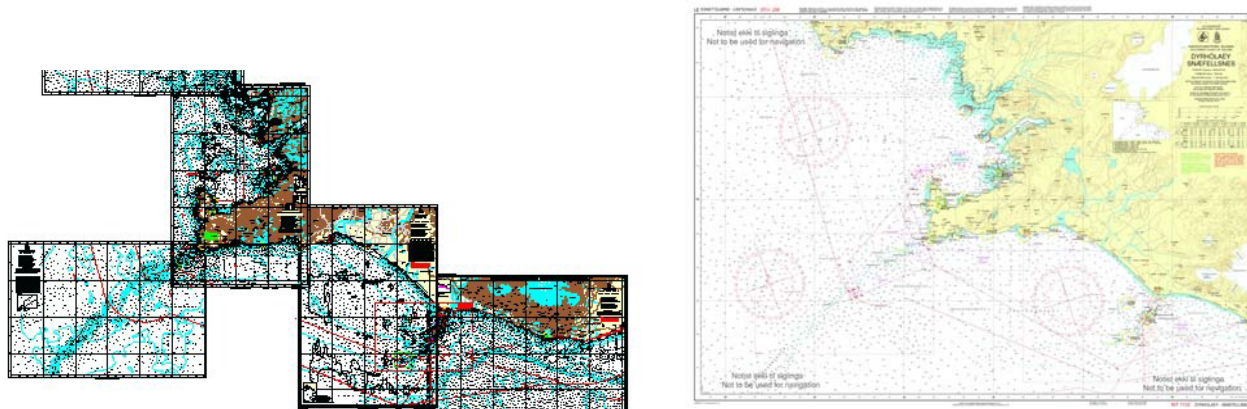


Figure 4 The 5 charts affected by the new TSS; No 31(right), 32, 33, 35 and 36 (left - from right to left).

ENC-production

By 1st May 2008, the ICG-HD has published 6 ENC cells in coastal band, 3 cells in approach band 1:90 000 and 8 in harbor band

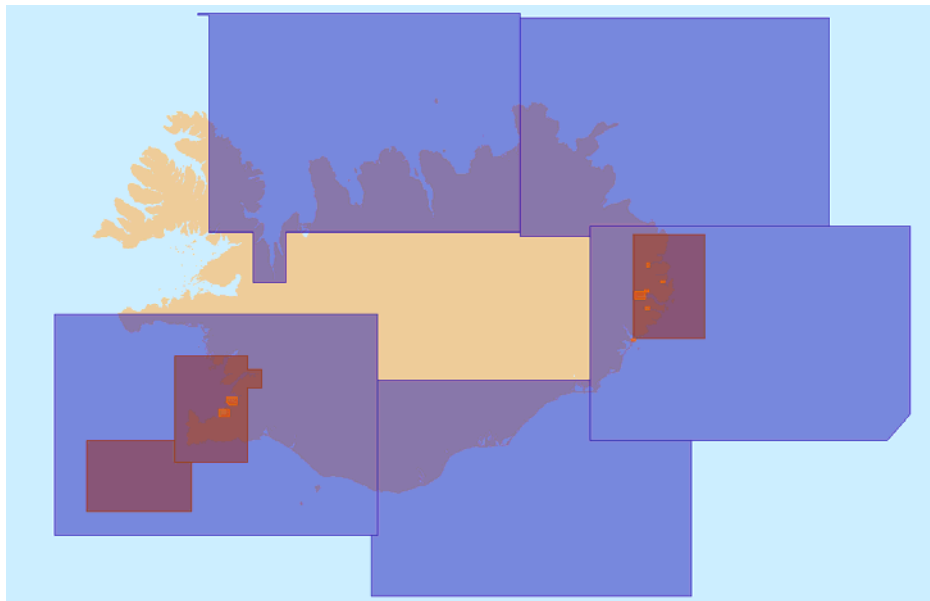


Figure 2 Icelandic ENC's 1st May 2008.

It is expected that publication of all Icelandic ENC's will be finished before the end of 2010. Today, 18 charts out of 64 have already been published as ENC's. The 64 Icelandic charts consist of 38 harbor and approach charts (7 in full size¹, 5 in ½ size and 26 in size A3), 19 coastal charts and 7 transit charts. The main emphasis now is on transforming INT charts to ENC.

Nautical publications

Tide tables and Tide almanac for 2008 were published in October 2007, 6 issues of Notices to Mariners (NtM's) were published in 2007 carrying 20 NMs in total. The Catalogue Charts is kept up to date on ICG website. The 2008 edition was printed recently. List of Lights and the NtM's are also available on the web site – www.lhg.is. The 2008 edition of List of Lights was released a month ago.

UKHO is planning a new edition of the Arctic Pilot Vol II (incl. Iceland) in 2009. A meeting was held in Iceland in August 2007 to discuss the possibilities of a joint co edited publication. Current publications both need considerable updating. ICG-HD and UKHO decided to work together and cooperate in publishing new editions of Sailing Directions for Iceland. The Icelandic version will be bilingual, in Icelandic and English.

¹ Full size is 102x72 cm