

## 56<sup>th</sup> NHC Meeting

Copenhagen, 21 - 23 May, 2012

This report gives the summary of the activities that has taken place within the Icelandic Coast Guard - Hydrographic Department since the last report given at the NHC/55 meeting in Stavanger, in April 2011.

### 1. Hydrographic Surveys

Due to cutbacks at the Icelandic Coast Guard (ICG), no hydrographic survey was planned in 2011. The survey vessel Baldur was however kept ready for surveying if needed. In May, June, July and August the vessel was used as a patrol vessel for a total of six weeks in collaboration with The Directorate of Fisheries.

### 2. Paper Charts

The paper chart portfolio now consists of 41 charts and 37 harbour plans in size A3. All the Icelandic nautical charts have been transferred into WGS-84 datum except two charts in Breiðafjörður. Following charts were published or reprinted in 2011:

New harbour plans:

National No.	Name	Scale	Pub. month
413	Þingeyri	1:10.000	Feb.11
414	Flateyri	1:10.000	Feb.11
415	Suðureyri	1:10.000	Feb.11
418	Súðavík	1:10.000	Feb.11
516	Hvammstangi	1:10.000	Mar.11
719	Breiðdalsvík	1:10.000	Nov.11

New editions:

National No.	Name	Scale	Pub. month
313	Þorlákshöfn	1:10.000	feb.11
522	Síglufjörður	1:10.000	mar.11
417	Ísafjörður	1:10.000	jún.11

Reprint:

73	Glettinganes – Hlaða (INT 1111)	1:100.000	Apr.11
----	---------------------------------	-----------	--------

New charts:

National no.	Name	Scale	Pub. month
10	Iceland – Greenland (INT-112)	1:3 500 000	Dec. 11
15	Iceland – EEZ	1:2 000 000	Dec. 11
43	Öndverðarnes – Tálkni	1:100 000	Jun. 11

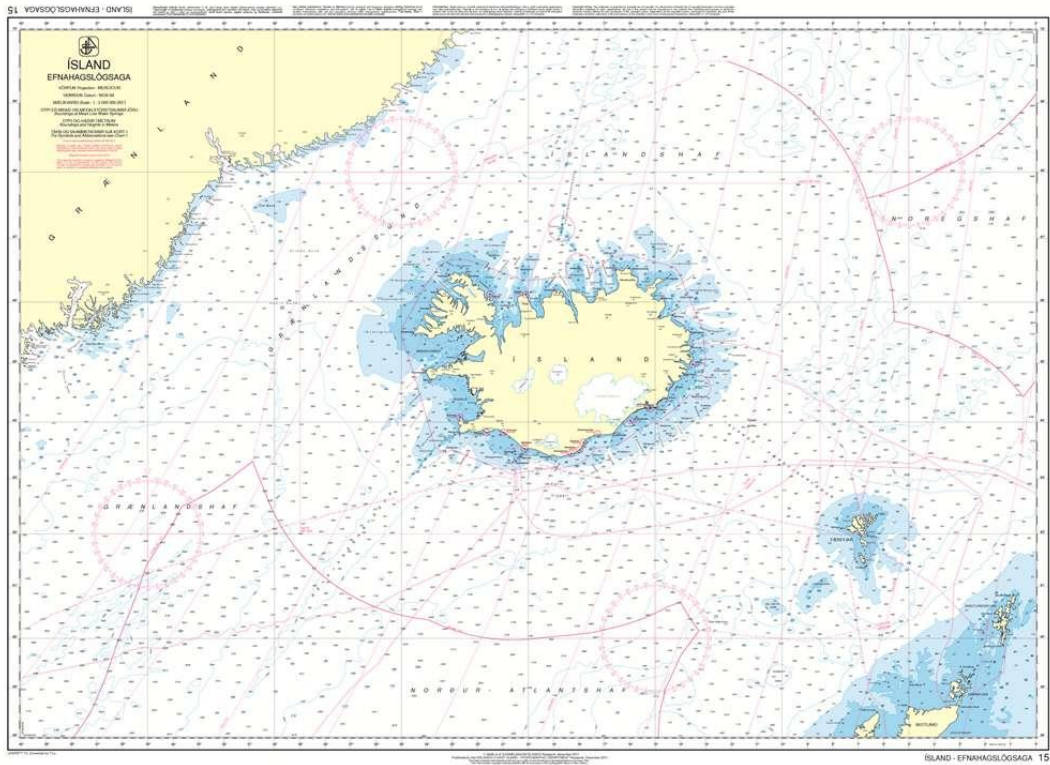


Figure 1 Chart no 15

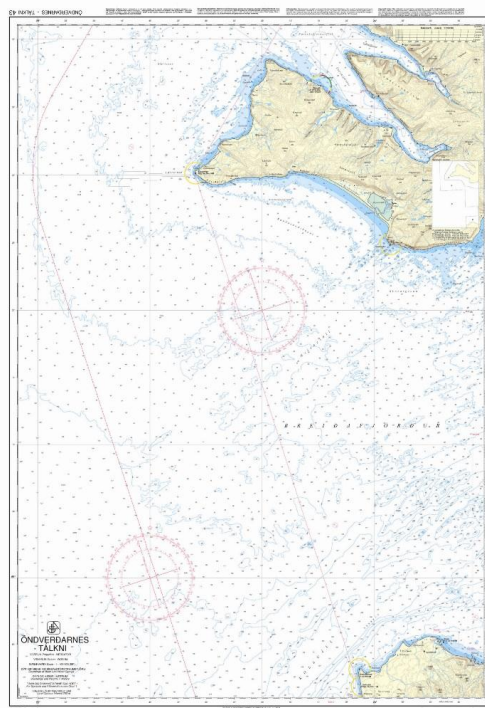


Figure 2 Chart No 43

### 3. ENC production

Iceland has finished transferring all charts to ENC's, total of 70 cells.

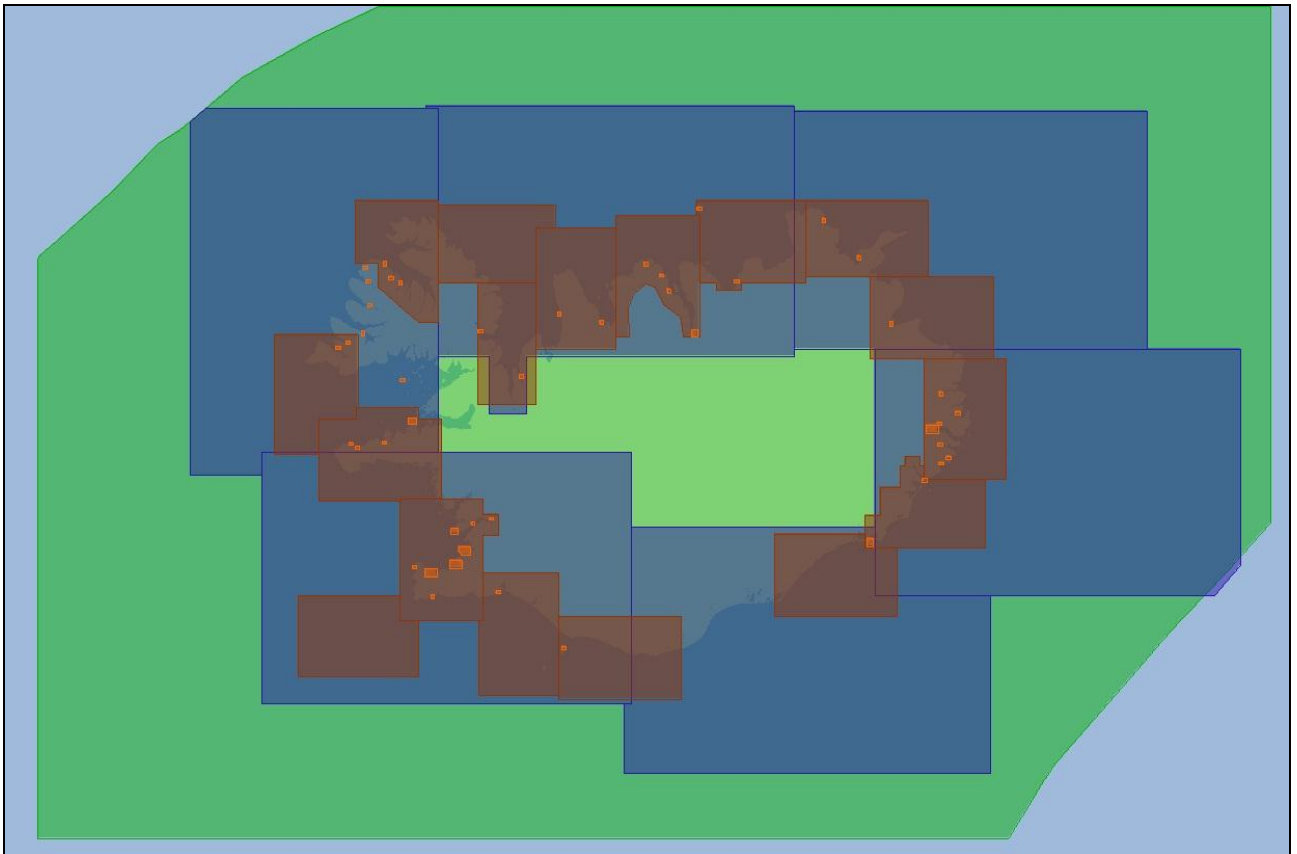


Figure 3 Icelandic ENC Cells as 1<sup>st</sup> May 2012

Following ENC charts were published in 2011:

IS400043	Öndverðarnes - Tálkni	New
IS500319	Miðsandur	New
IS500413	Þingeyri	New
IS500414	Flateyri	New
IS500415	Suðureyri	New
IS500418	Súðavík	New
IS500516	Hvammstangi	New
IS500522	Siglufjörður	New
IS500523	Ólafsfjörður	New
IS500532	Grimsey	New
IS500718	Stöðvarfjörður	New
IS400057	Eyjafjörður	New ed.
IS500313	Þorlákshöfn	New ed.
IS500417	Ísafjörður	New ed.

#### **4. Nautical Publications**

The following nautical publications were published:

*Catalogue of Charts 2011*. *Tide Tables 2012* and *Tide Almanac 2012* and *Notices to Mariners* (six issues). 2<sup>nd</sup> edition of INT 1 - Symbols and abbreviations was published in January 2012.

*Notices to Mariners* (bilingual) and *Catalogue of Charts* (bilingual) can be obtained on the website [www.lhg.is/english/hydrographic\\_department/](http://www.lhg.is/english/hydrographic_department/).

#### **5. Capacity building**

Iceland has not been active in Capacity Building during 2011.

#### **6. C-55**

C-55 was last updated in March 2010 since then no changes have been.