



The Swedish and Finnish working group for harmonizing depth information in neighboring ENC's



Types of inconsistencies identified

Mismatch of Navigational Purposes

Sounding density

Scamin settings on soundings

Scamin settings on depth contours

Representation of depressions

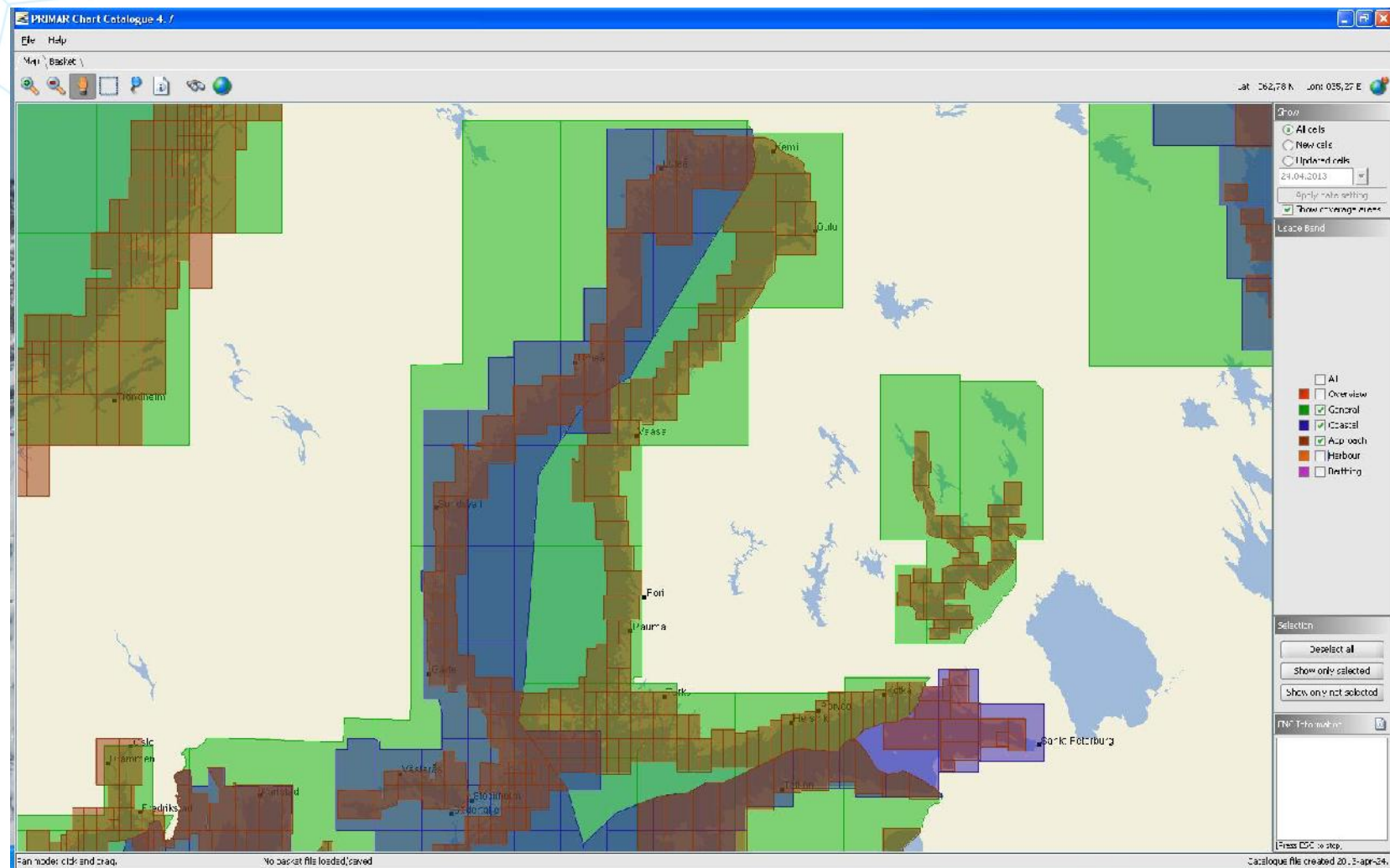
Mismatch of depth contours

Generalization of depth contours

Non equivalent depth contours

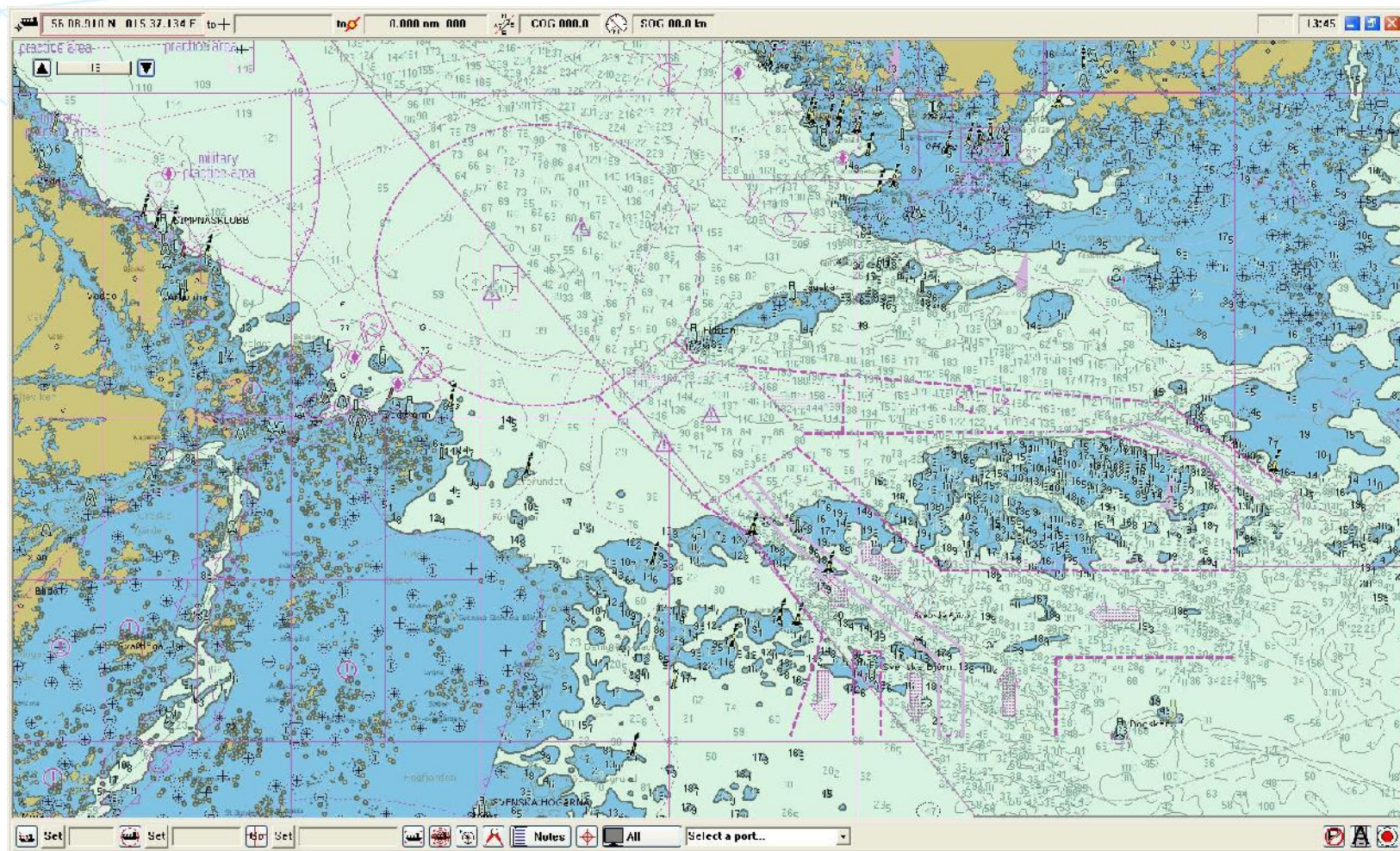
Rounding of soundings

Mismatch of Navigational Purposes



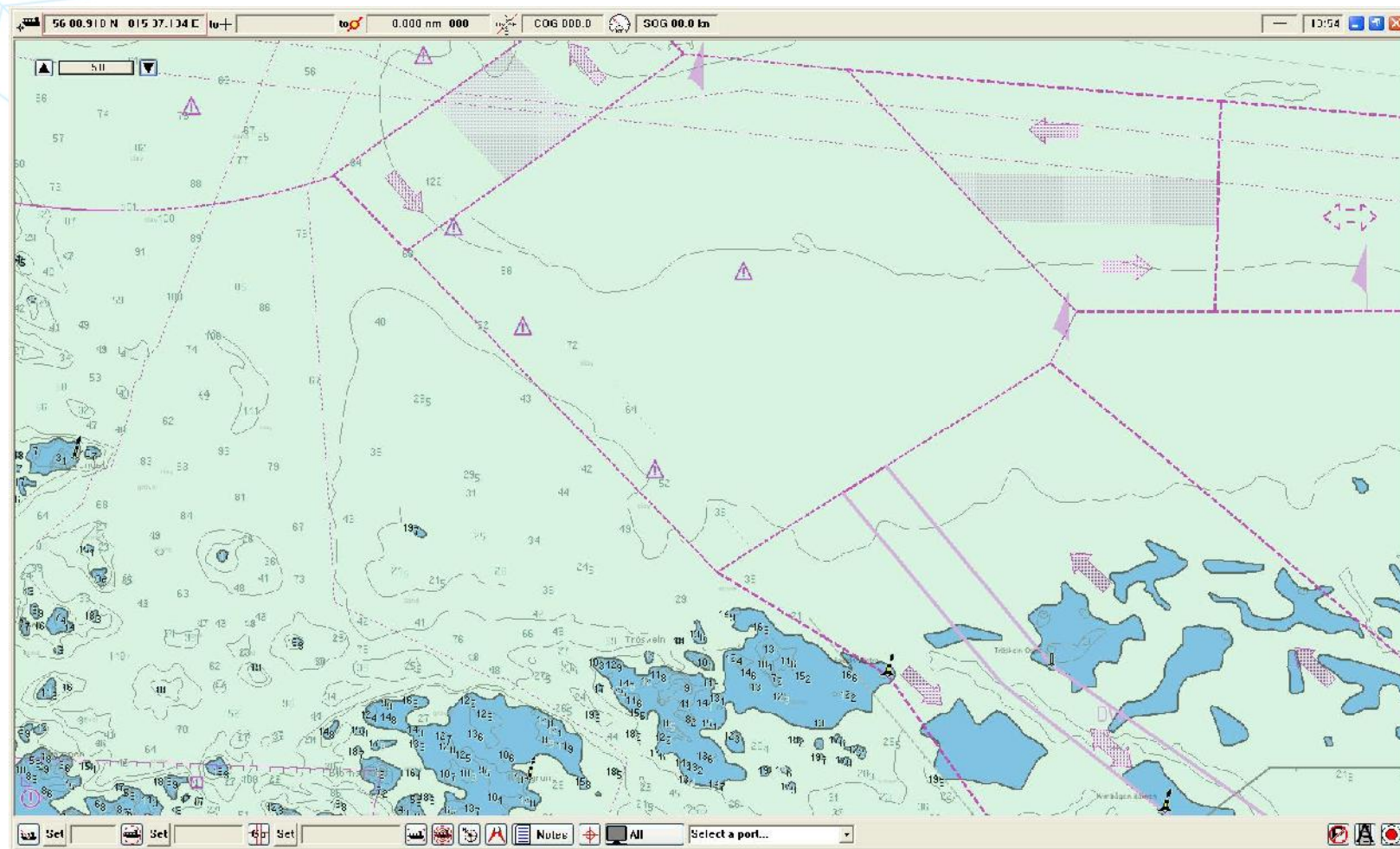
There are no Finnish ENC's in Navigational Purpose Coastal

Sounding density



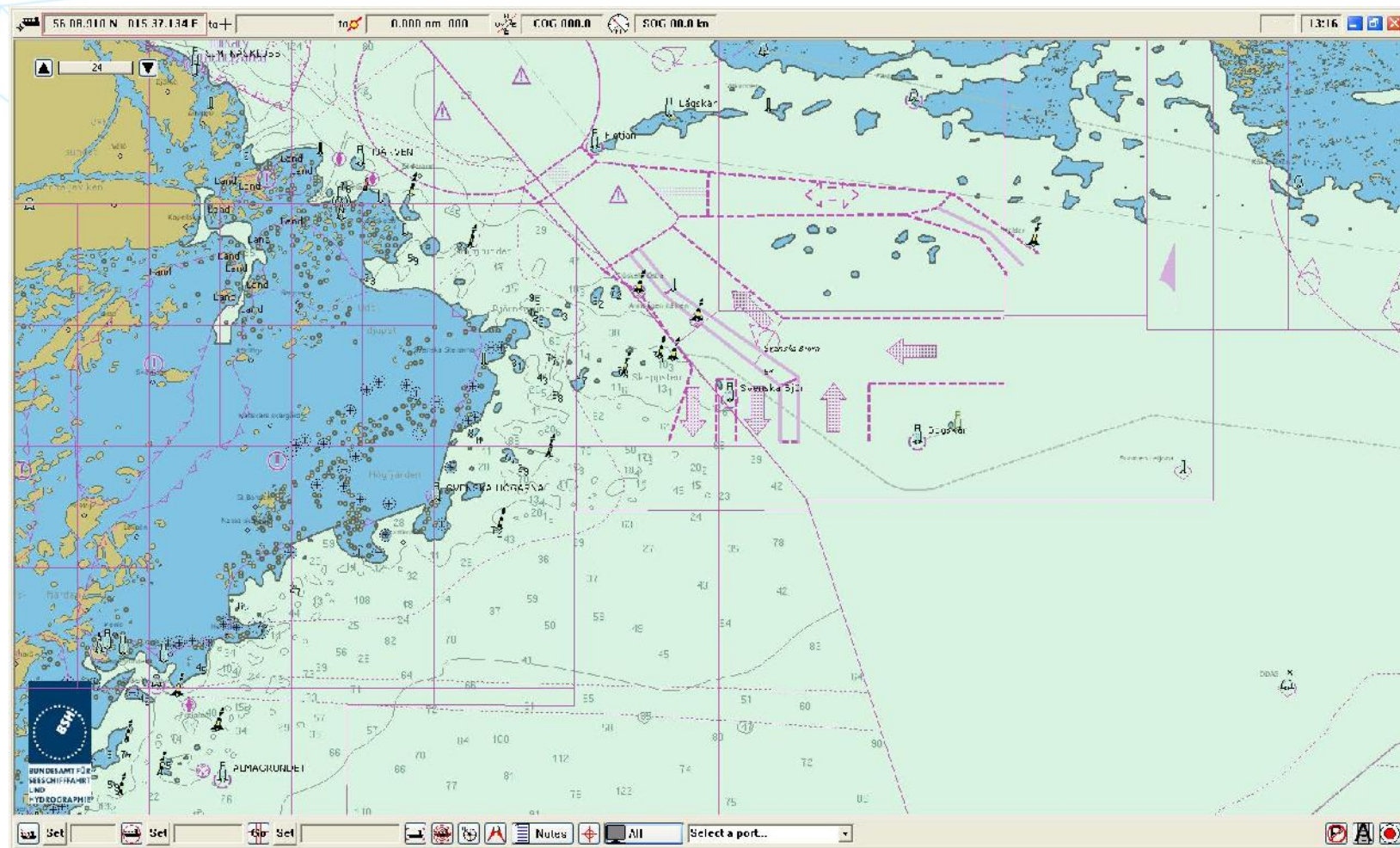
*More dense soundings on Finnish side of the border
Coastal*

Scamin settings on soundings



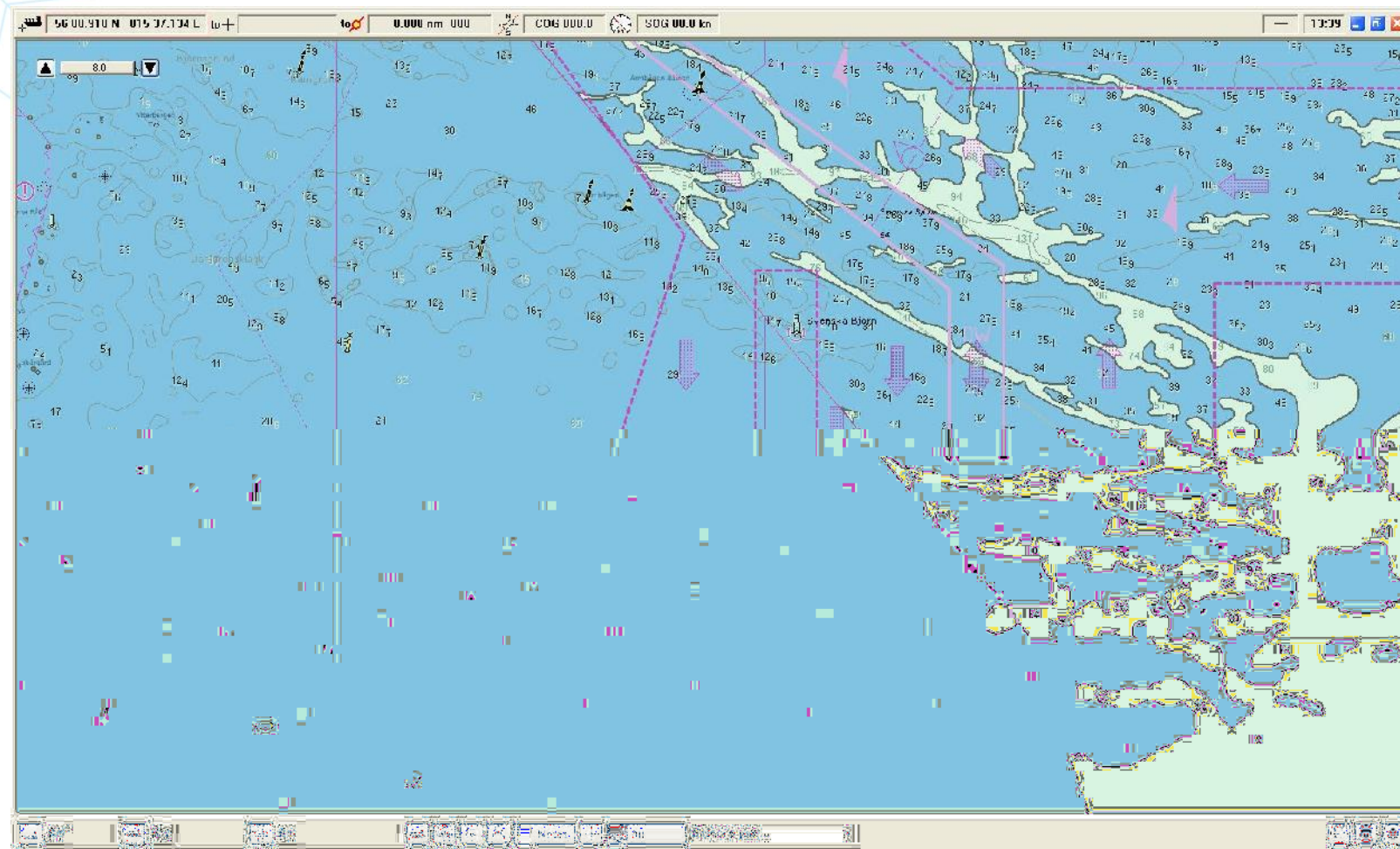
*Scamin on Soundings 51000/FI and 89999/SE
Approach*

Scamin settings on depth contours



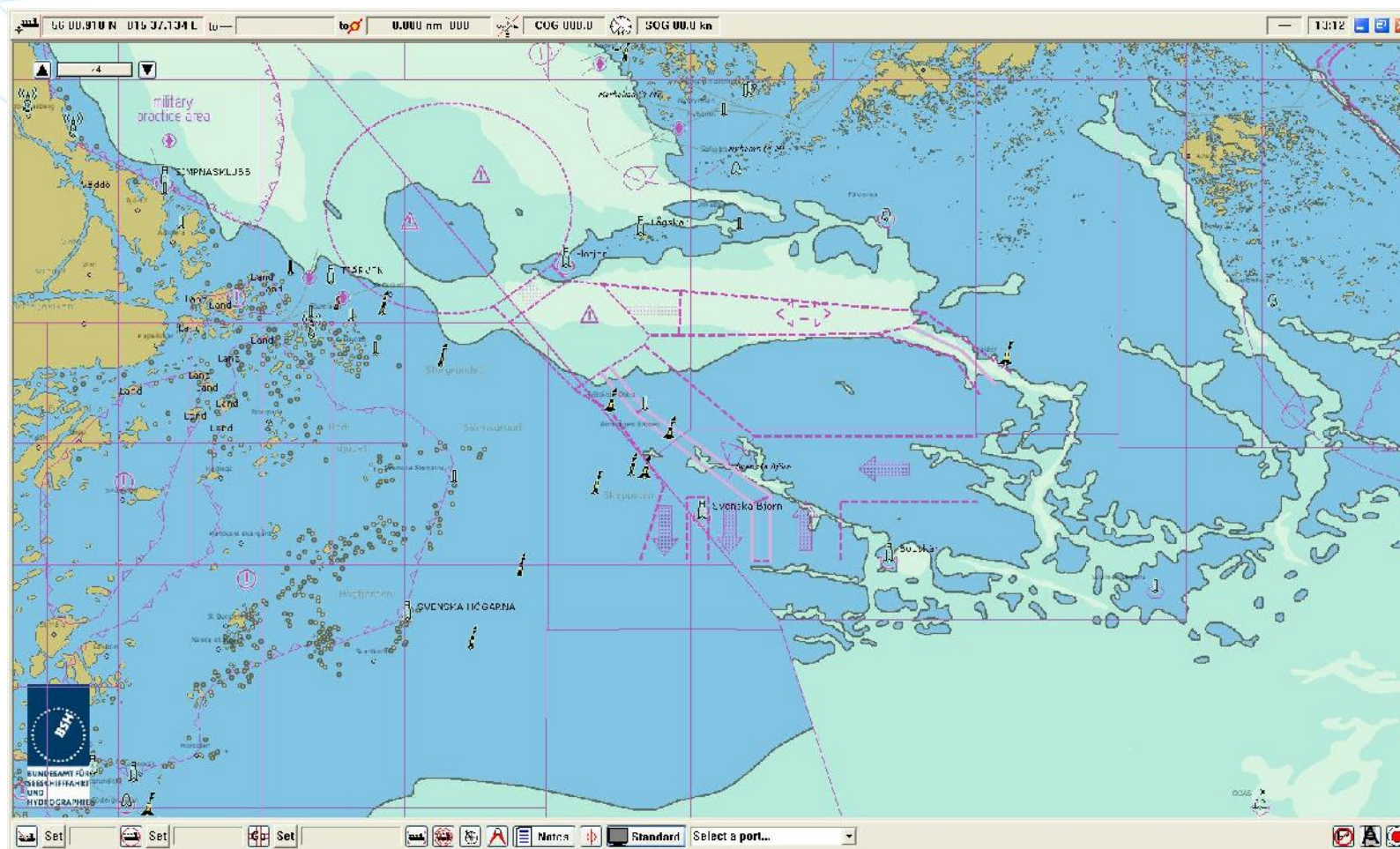
*Scamin set on Finnish depth contours (349999)
General*

Representation of depressions



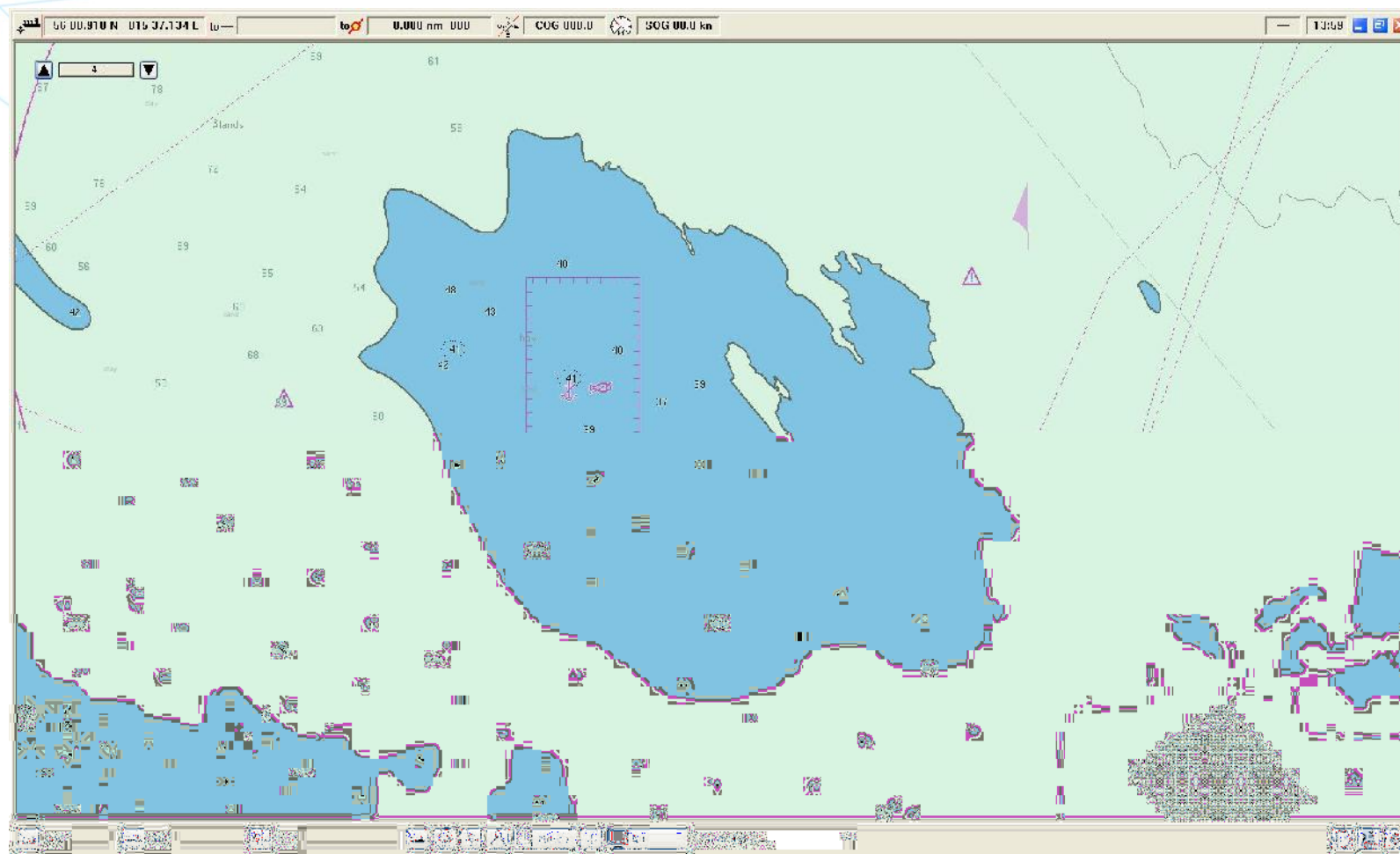
No Swedish 50 m depth contour in area south of TSS Coastal

Mismatch of depth contours



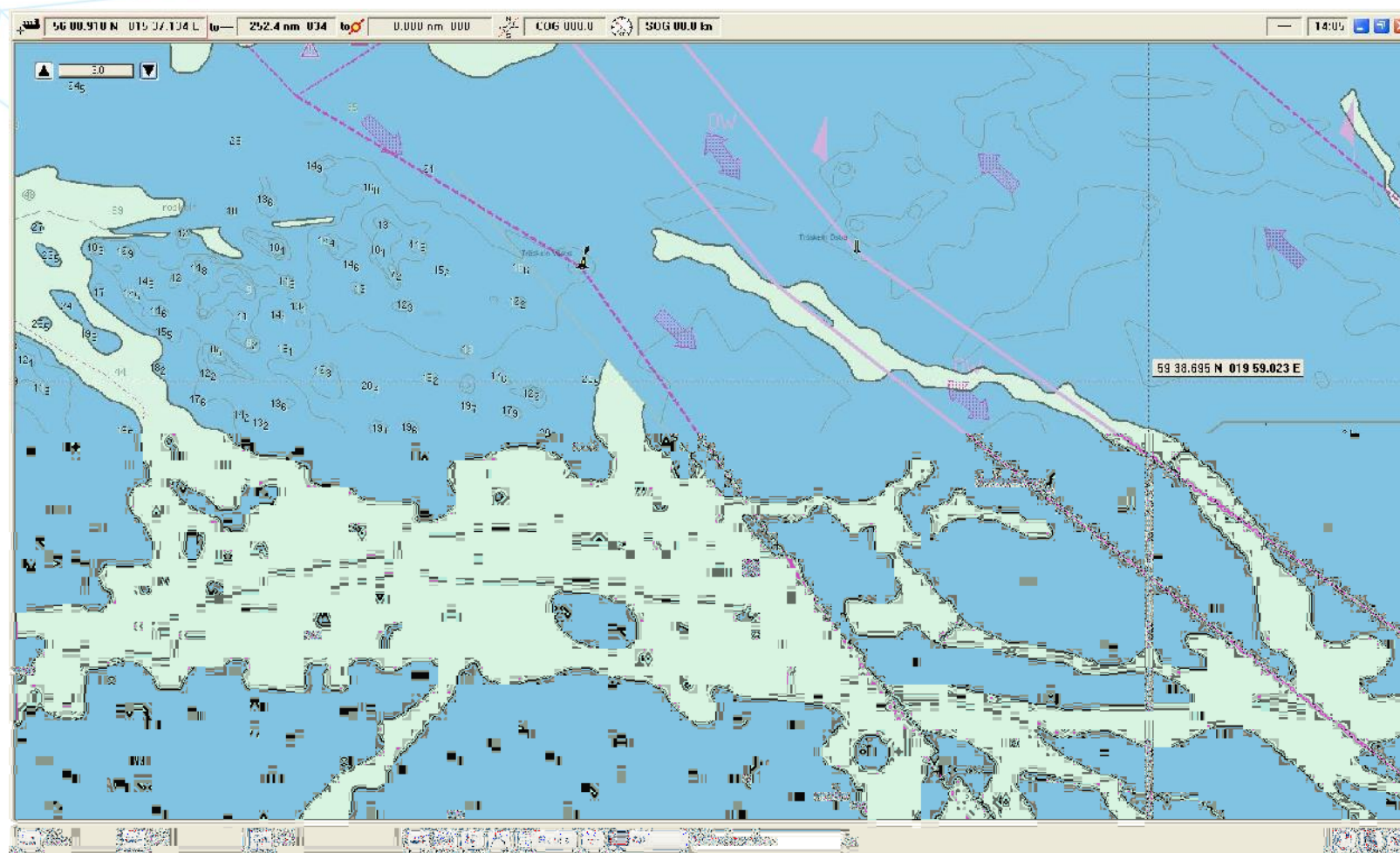
Mismatch of 50 m depth contour
General

Generalization of depth contours



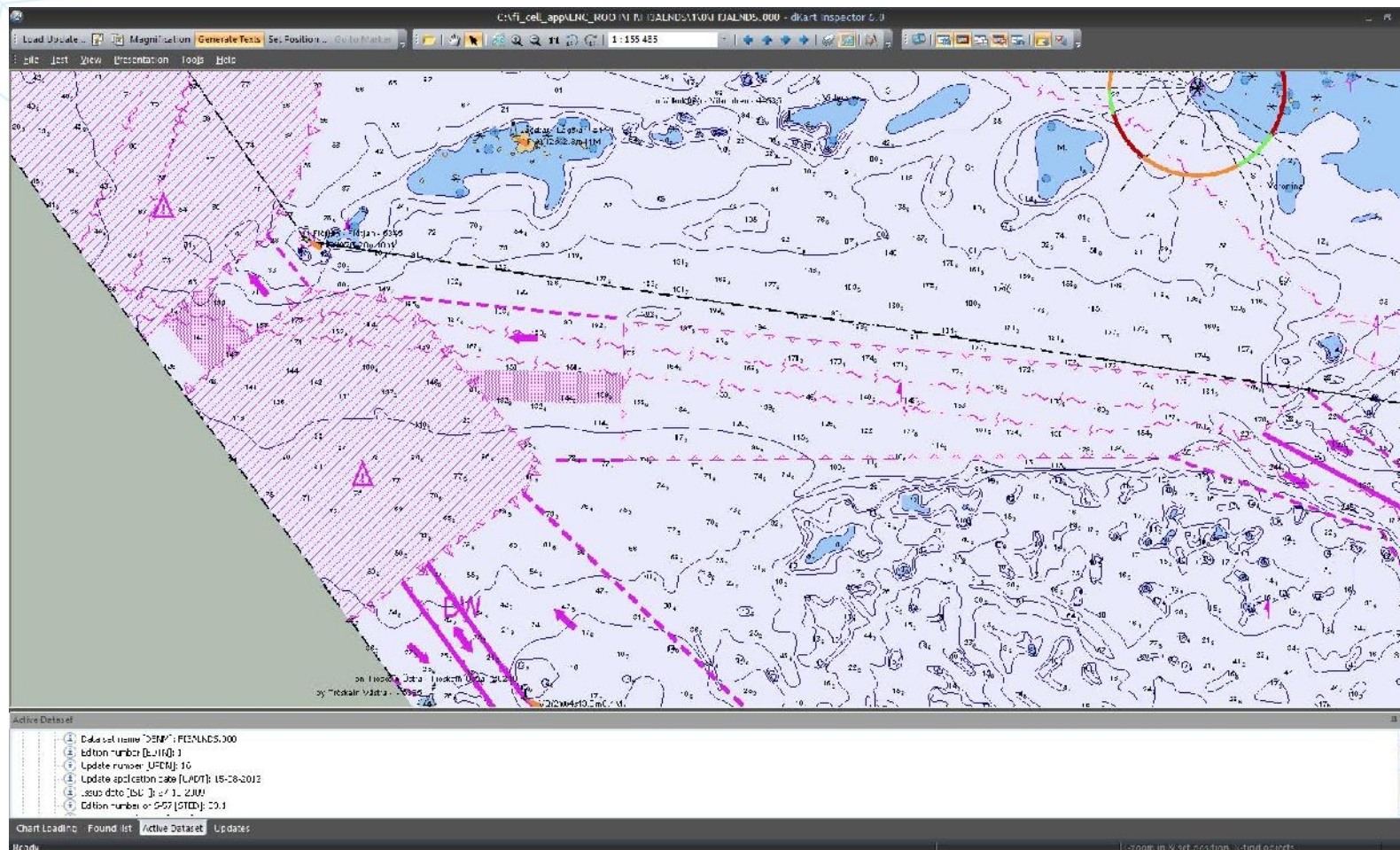
*More detailed depth contours on the Finnish side of the border
Approach*

Non equivalent depth contours

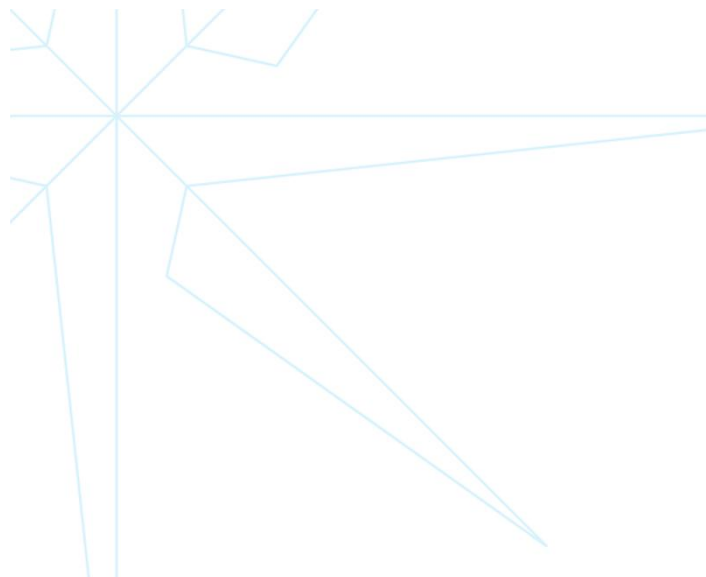


No Finnish 30 m depth contour
Approach

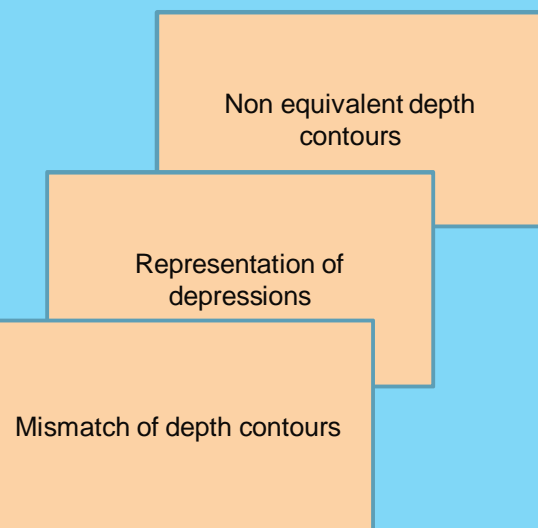
Rounding of soundings



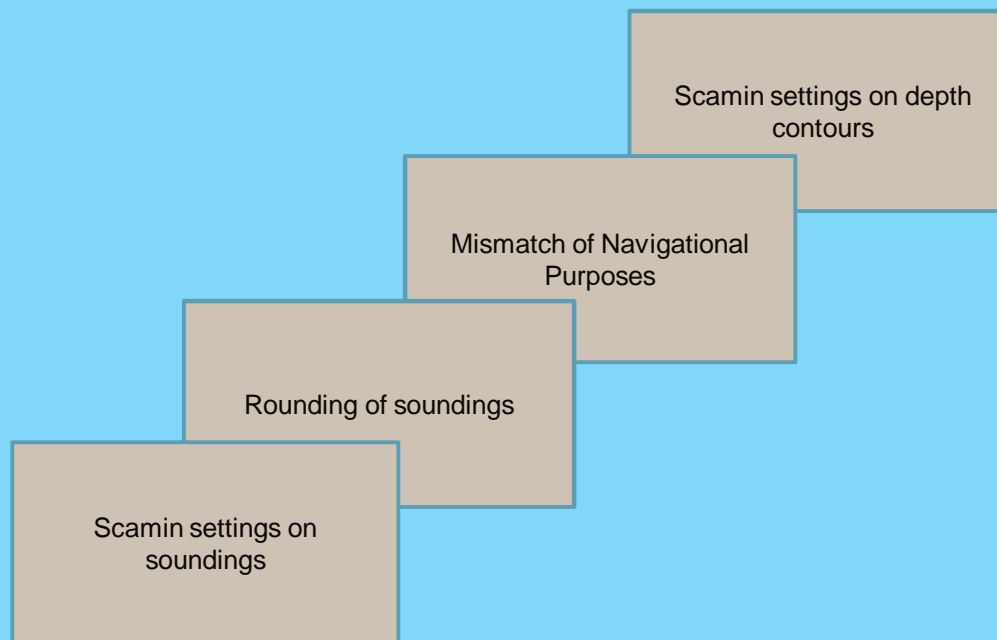
*The soundings in the Finnish ENC's have decimeters beyond 20 m.
In ECDIS soundings are rounded to nearest meter beyond 31 m.
Costal*



1. Chart Data Update



2. Planned actions



3. Guidelines

