

NHC 59th meeting

Agenda item NHC59_10A

April 14-15, 2015

Reykjavik – Iceland

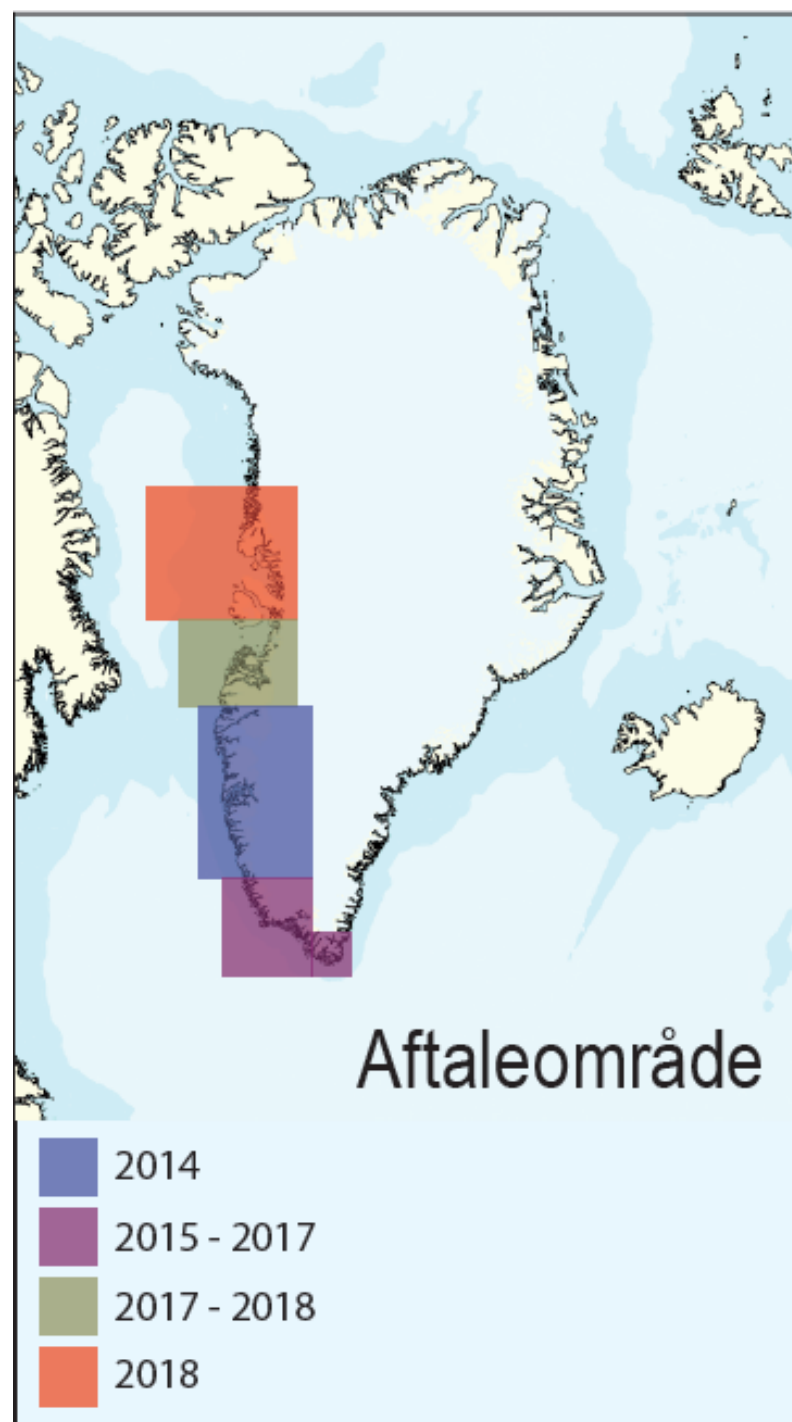
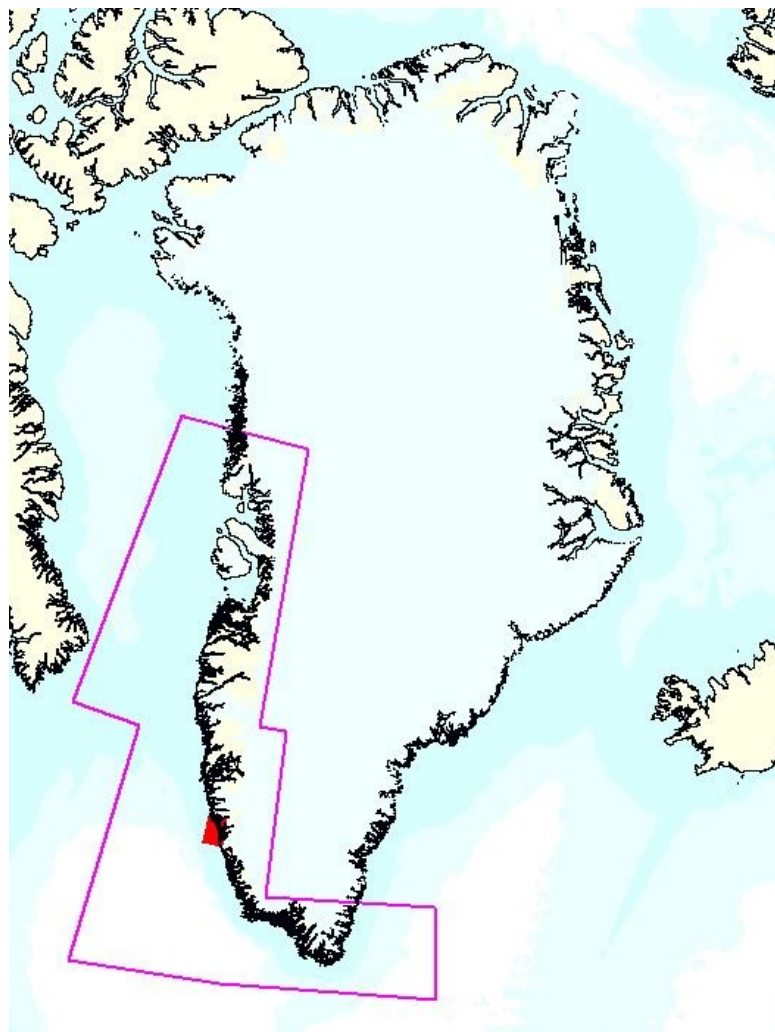
Production system Greenland

Production system Greenland

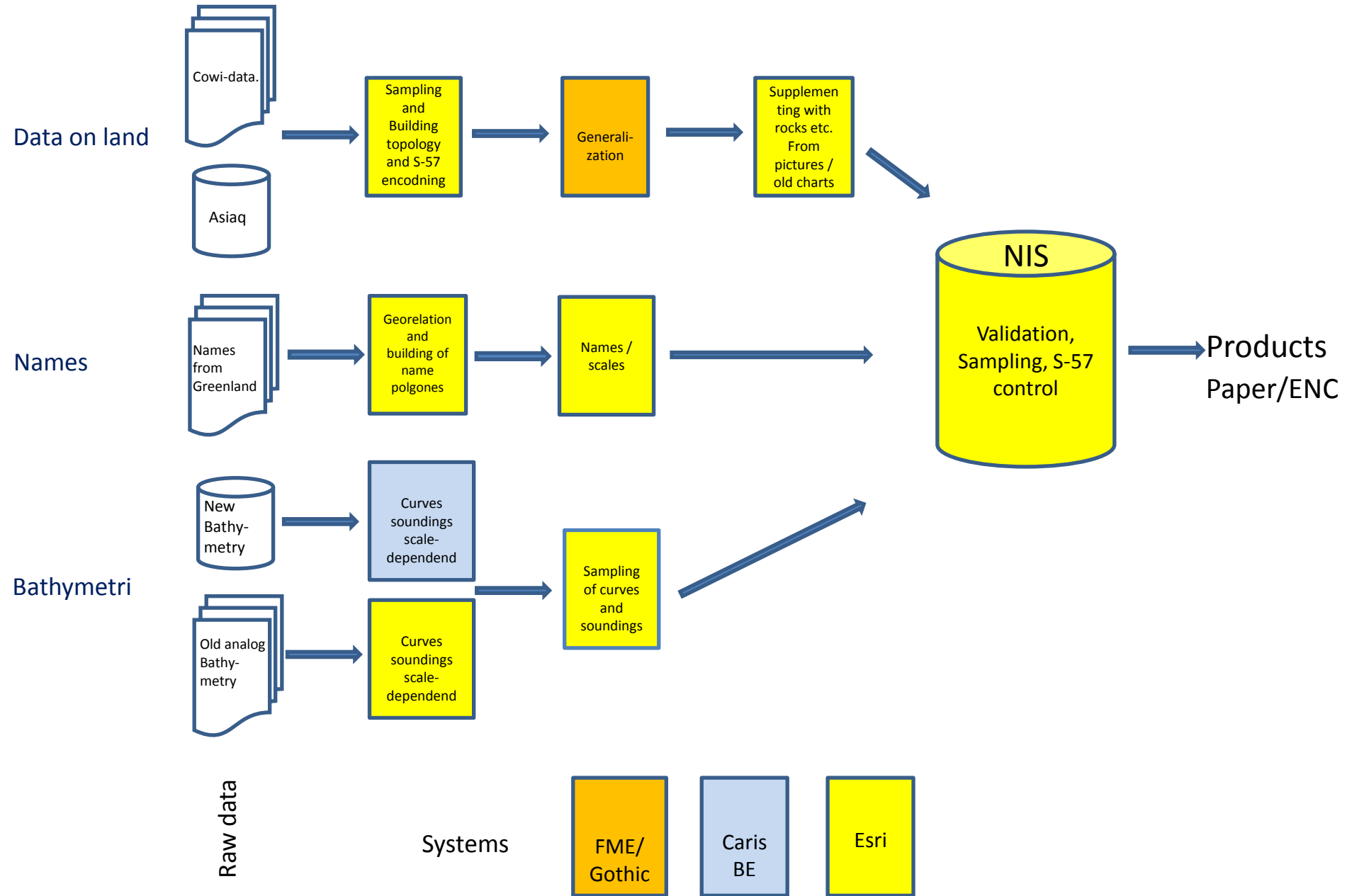
- Denmark has two different production systems at the moment. One for Denmark and one for Greenland.
- Production system for Greenland is a testbed for Denmark – what to chose?
 - Except for new bathymetry that comes in once a year – almost no new information on Greenlandic waters
 - We can concentrate on production, and not look so much on the maintenance

Greenland - to remember

- All old charts are not placed geographical correct between 0 - 1000 m out of place
- No topographic maps better than 1:250.000 exist over Greenland
- All aerial photos over Greenland is more than 25 years old and are taken in a scale 1:150.000
- We have to build topographic maps before we can make new charts with the same software and the same staff
- New bathymetric surveys covers around 1.000 km² per year
- Greenlandic waters are about 2.000.000 km²
- In the coastal zone where we are operating - approx. 20 % of the area is covered with new Bathymetry

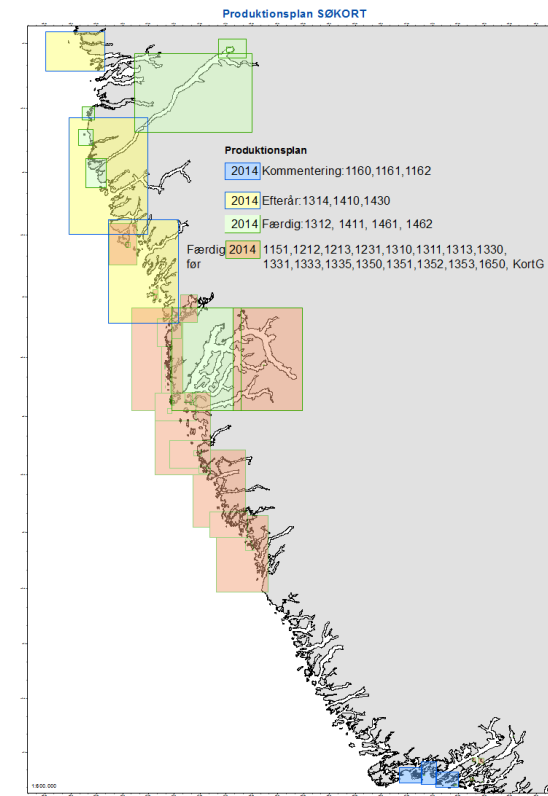


Workproces and systems



System – and production

- NIS – Maritime Charting solution from ESRI
- We have chosen a central database for all Greenland – not divided in chart frames
- Start using the system Medio 2011
- First paper chart produced in the system end of 2013. Until then - charts produced in Caris
- 2014 - 7 paper chart produced in the system
- No ENC produced in the system yet
 - but we are almost there
- In total 24 new charts are produced



Challenges

- We have been struggling with bad performance since the beginning of the project
- Until spring 2014 we have had a bad internal IT-network with pure latency – around 2 ms
 - NIS has a chatty application that requires a latency better than 1 ms
- Until summer 2014 we have been working directly in the NIS database (Oracle)
- Until spring 2015 we have been working with paper charts directly in a product database in Ms-sql

Progress

		Spring 2014	Summer 2014	Autumn 2014	Spring 2015
Network	Latency around 2 ms	-----> latency in the network better than 1ms	----->		
Oracle database	Working directly in the database	----->	Working in replica of the database	----->	
Chart automation tool				Start using	----->
Product database (MS-sql)	Working with paper chart directly in the product database				Production on own machine
ENC	Working with ENC directly in the product database		----->		Production directly out of the NIS
MS-sql	Existing	-	----->		Cancelled
System	10.2		----->		10.3 ----->