

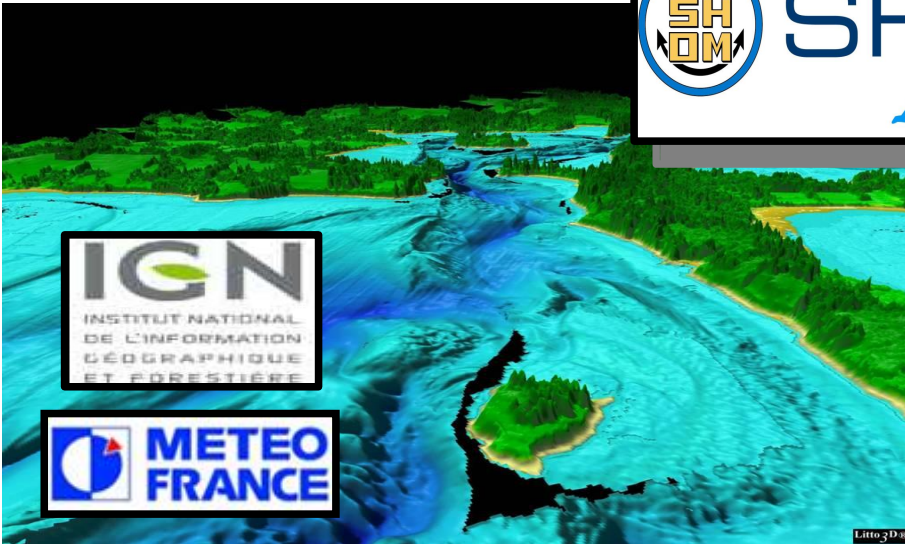


SHOM

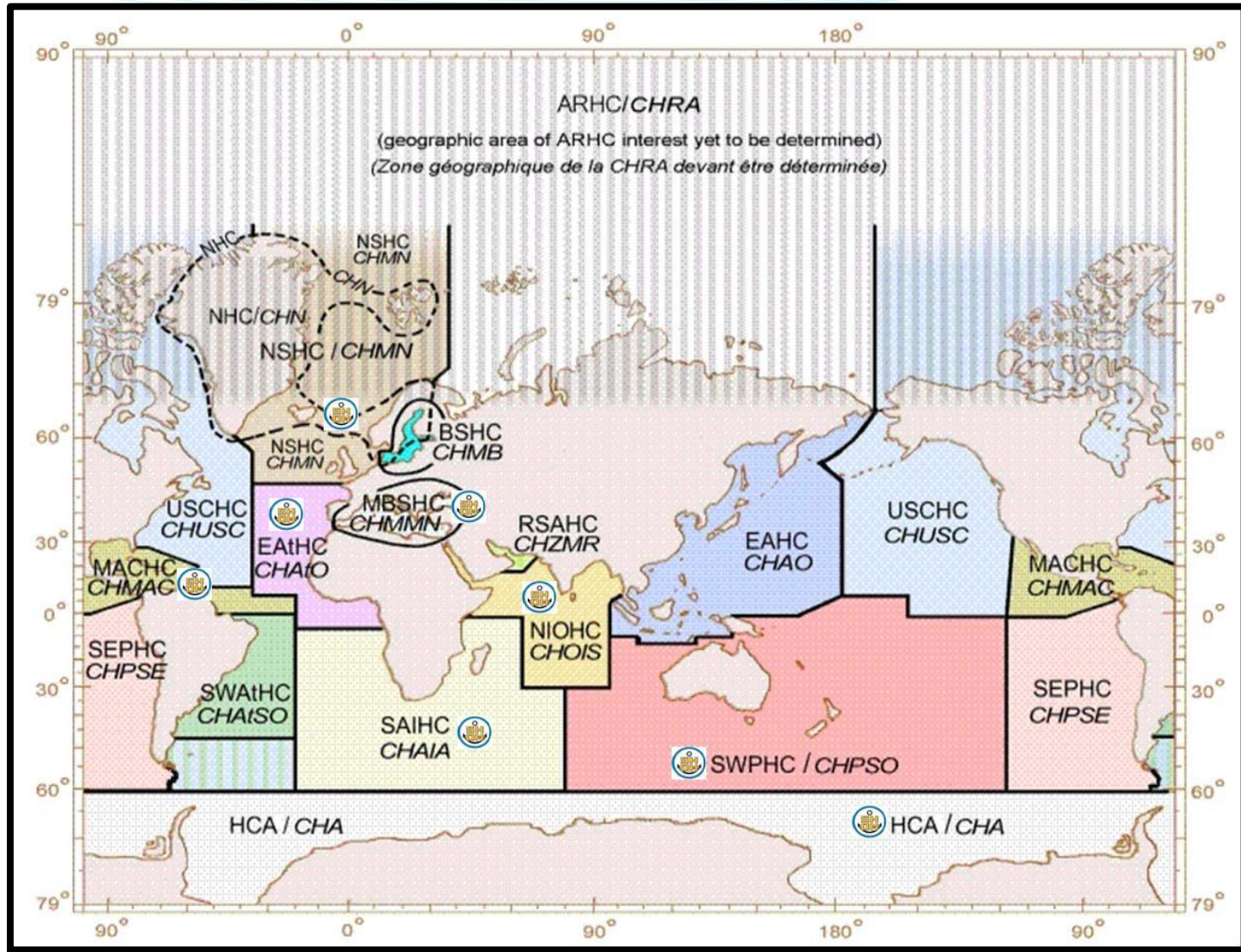
L'océan à la carte

French National Report to the NIOHC

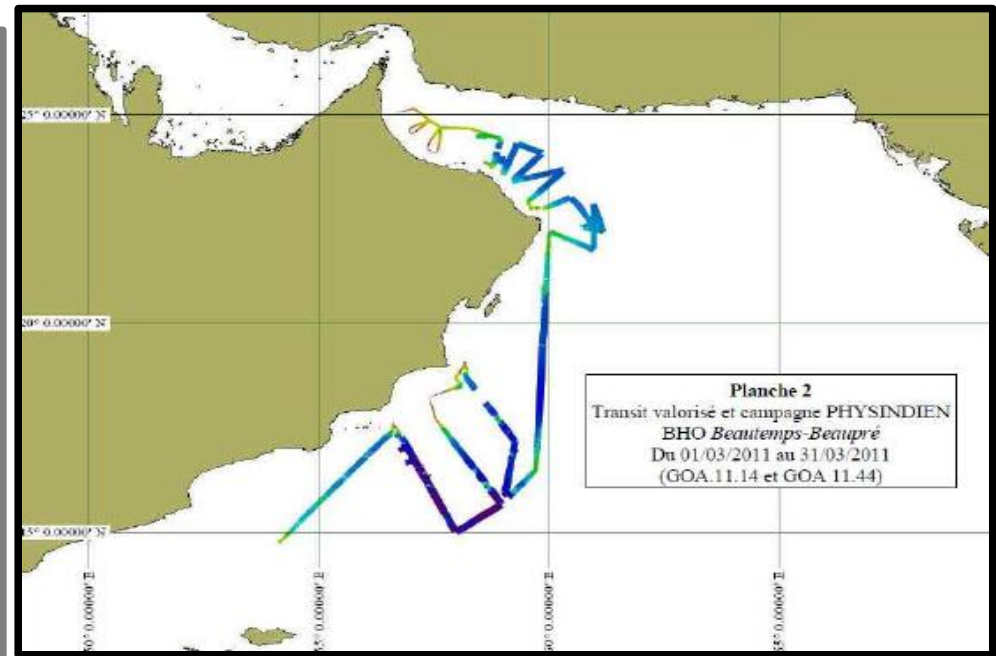
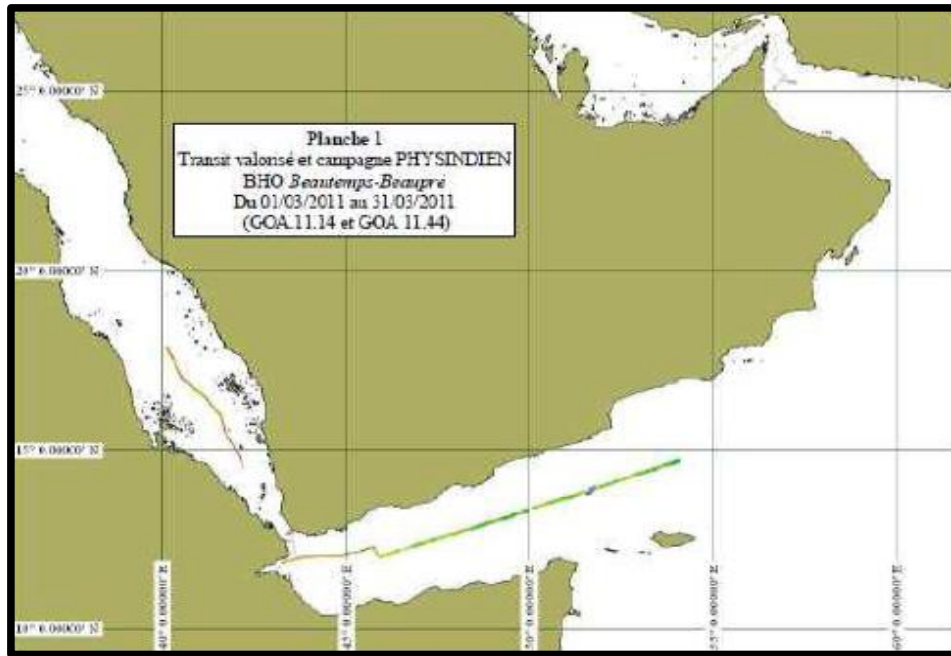
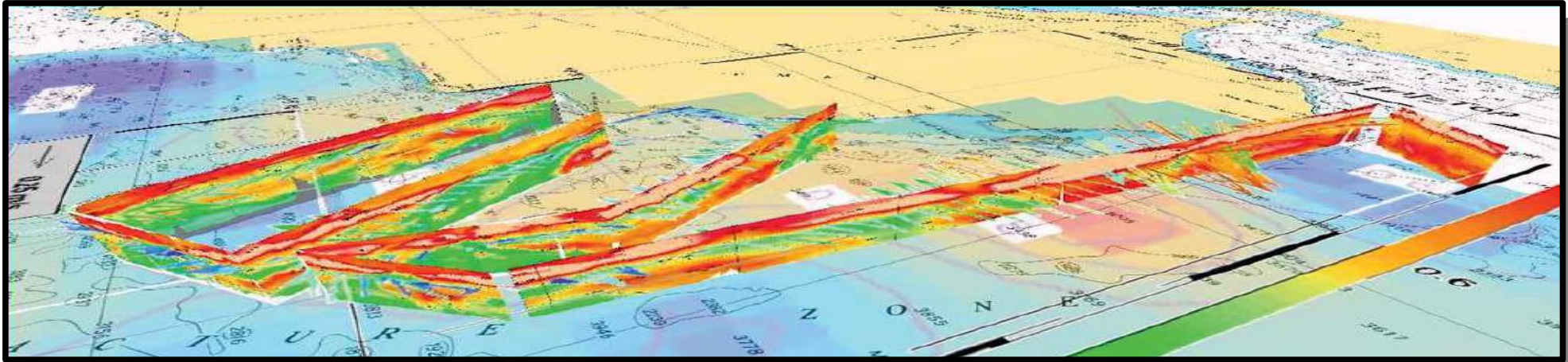
SHOM : French Hydrographic Service



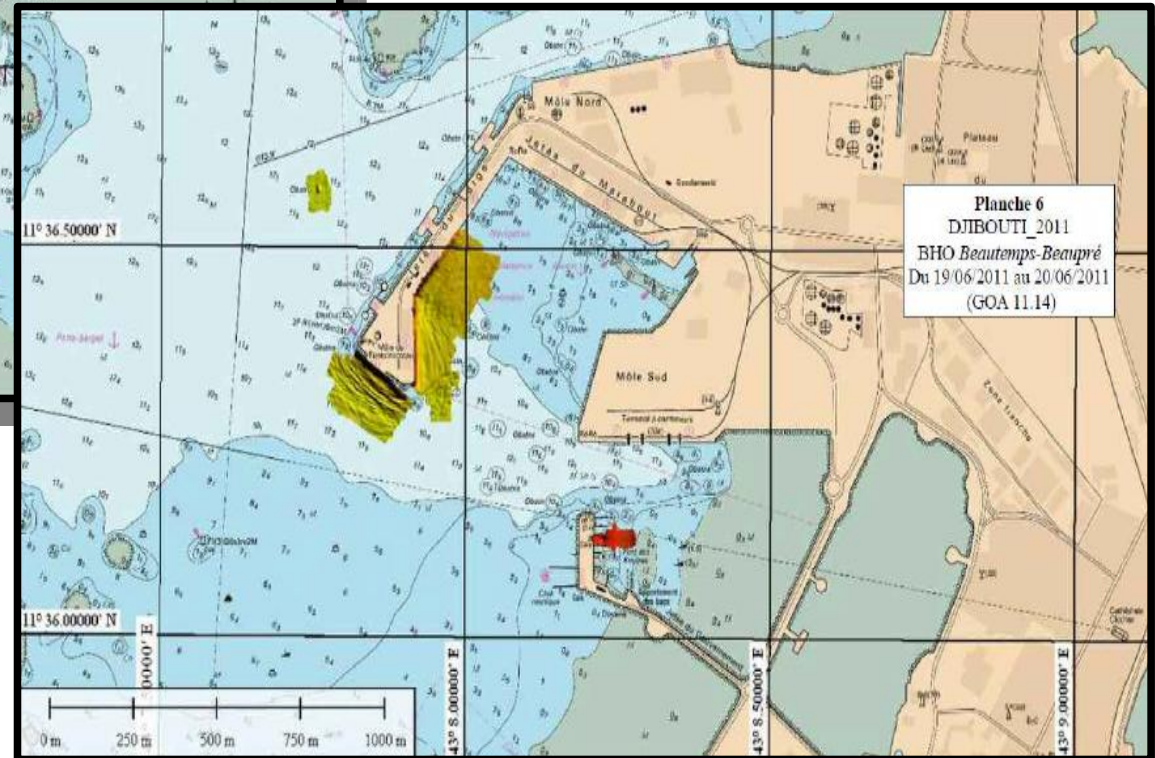
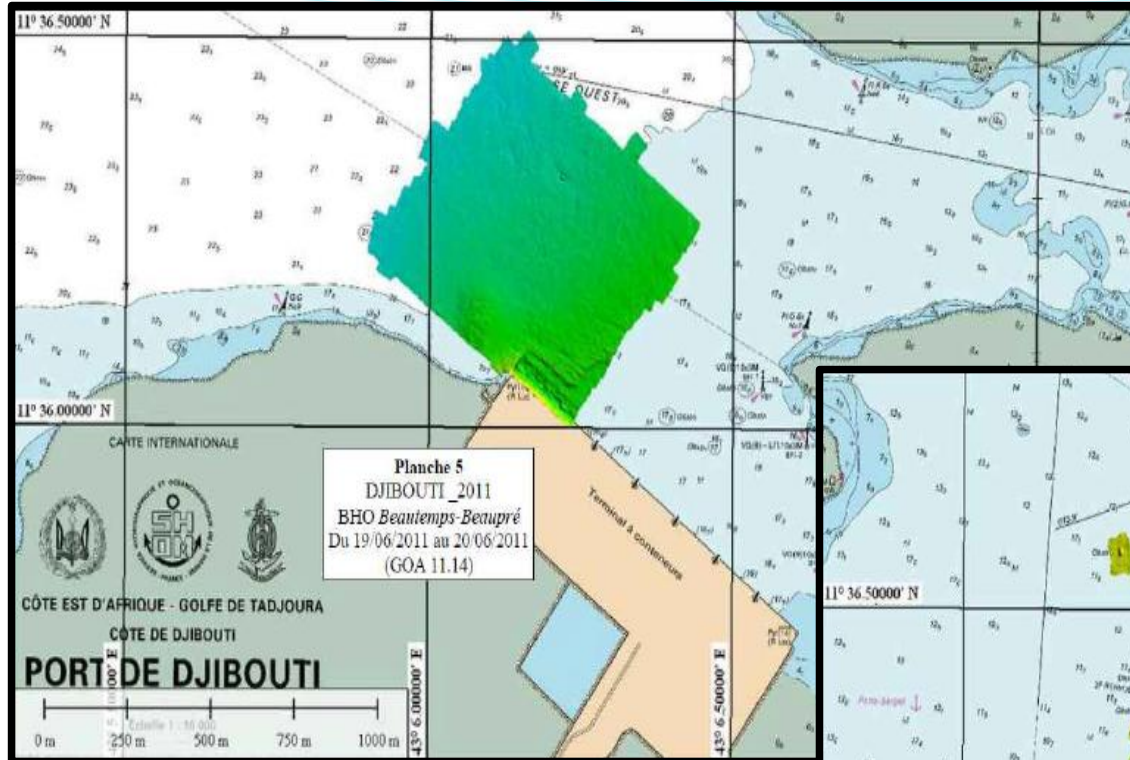
SHOM's involvement in IHO activities



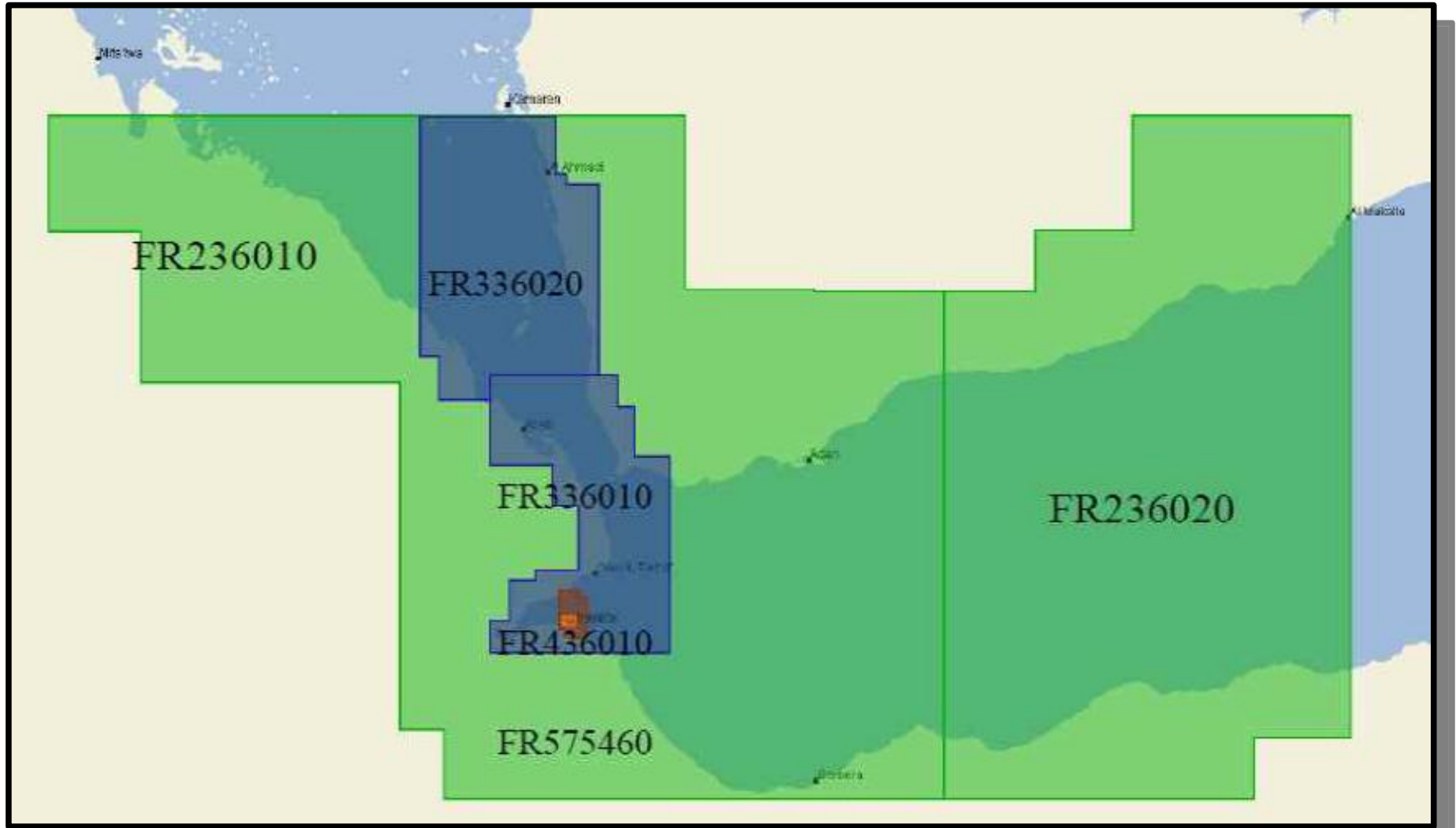
New surveys since the last meeting (1/2)



New surveys since the last meeting (2/2)



French ENC coverage in the region



SHOM tide gauge network

<http://refmar.shom.fr>



Disaster prevention



**VAGUES-SUBMERSION :
UN NOUVEAU DISPOSITIF DE VIGILANCE**

A photograph of a surfer riding a large, white-capped wave. In the background, buildings are visible on a cliffside.

METEO FRANCE
Toujours un temps d'avance

The poster has an orange background. At the bottom left, there is a small logo of the French Republic and a small circular logo. At the bottom right, the 'METEO FRANCE' logo is prominently displayed with the tagline 'Toujours un temps d'avance'.

SHOM
L'océan à la carte

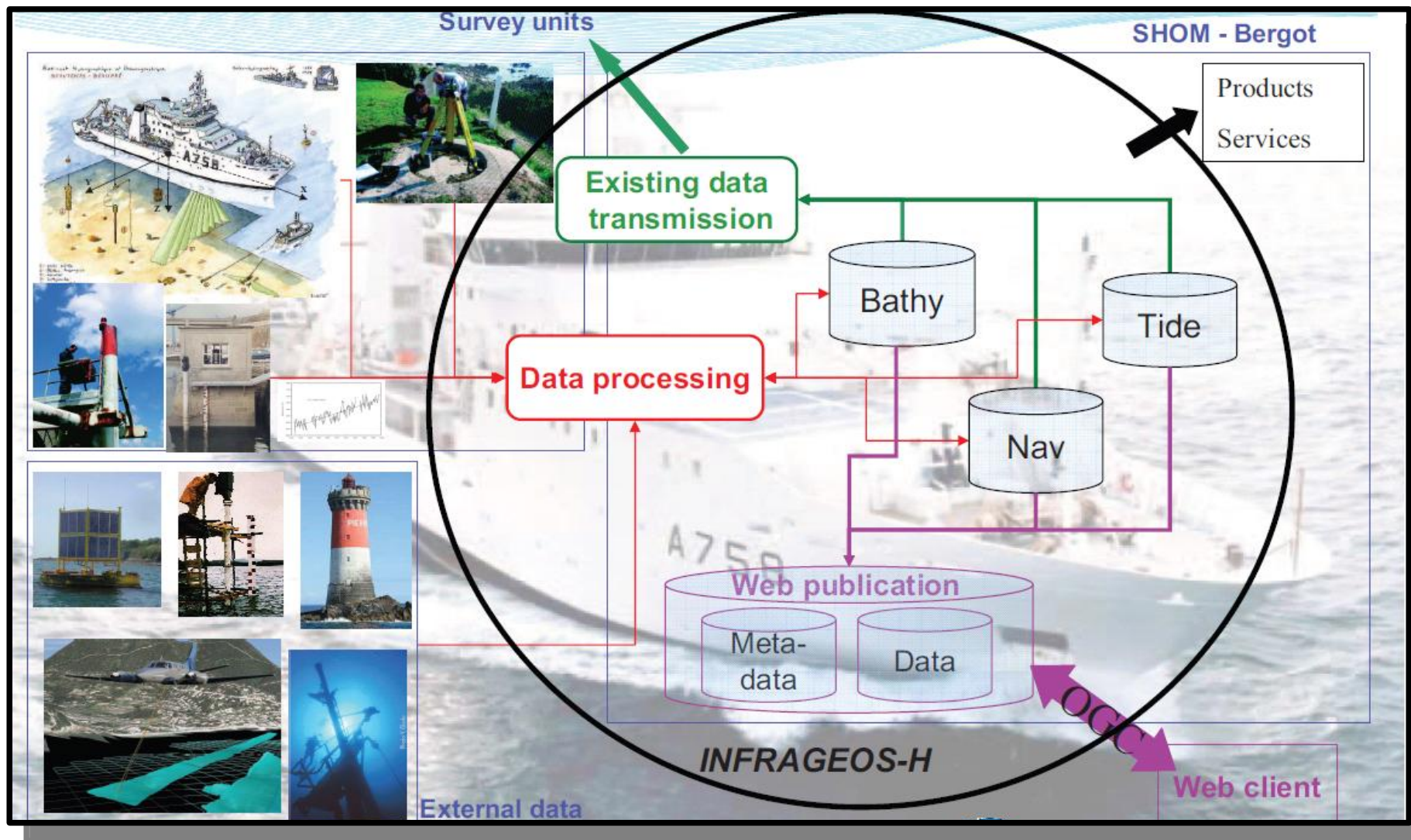
La marée...
c'est quand
vous voulez sur
www.shom.fr

A partir du
1er juin 2011
nouveau service gratuit :
vos prédictions de marées
en toute liberté*

sur l'écran en cours

The advertisement features a background image of a rocky coastline with waves crashing against the shore. The SHOM logo is in the top left, and the handwritten-style text is in the center. A yellow sticky note is placed on the left side.

MSDI : INFRAGEOS project





SHOM

L'océan à la carte

Thank you for your attention !

Please visit our website:

www.shom.fr