

and principles shall be further discussed in the Chapter of Religious Tourism.



NATIONAL REPORT SAUDI ARABIA

BY THE SAUDI DELEGATION TO
NIOHC – 21 MAR 2012

GENERAL COMMISSION FOR SURVEY

- GOVT MANDATED NEW NATIONAL ORGN FOR ALL MAPPING , INCLUDING HYDROGRAPHY
- KSAHO ESTABLISHED AND CAPACITY BUILDING UNDER IMPLEMENTATION
- STAKE HOLDERS /USERS NEEDS –TOP PRIORITY
- ADEQUATE FUNDING BY GOVT
- OUTSOURCED CONTRACT SURVEYS +OWN CB BY LIDAR AND MULTIBEAM(100% INSONIFICATION)
- GIC(MSDI) ESTABLISHED UNDER GCS BY GOVT

PROJECTS (COMPLETED/IN PROGRESS)

- NATIONAL CHARTING SCHEME FINALISED
- HSP1 -3950 SKM COMPLETED – 7 ENC's JUL12
- KA PORT- 2 ENC's EDC APR 12
- HSP 2 -4000 SKM – EDC MAY12- 5 ENC's OCT12
- HSP3-4000 SKM- EDC AUG12- 4 ENC's JAN13
- HSP 4- 4000 SKM- UNDER TENDER-6 ENC's APR 13
- 12 TIDE GAUGES NETWORK OPERATIONAL
- TRG CENTRE AT JEDDAH READY WITH 16M HSL AND SUITE OF HYDROGRAPHIC EQUIP/SYSTEMS

PROJECTS COMPLETED/IN PROGRESS

- 10 MARINE CARTOS TRAINED CAT B IN 2011 AND PRESENTLY 6 ON ENC PRODUCTION MODE
- 10 HYDROS CAT B COURSE FROM 01 APR 2012
- 24 ENC_s—AL LITH TO MARSALA THUWAL - APR 2013
- N TO M & NAUT PUBS PLANS - FROM JUL 12
- GCS- OFFICIAL RECOGNITION BY IHO IN FEB 12
- TEMPORARY QC/QA SETUP ESTABLISHED
- ADDL MANPOWER BEING AUGMENTED
- DEEP WATERS SURVEYS VESSEL PLANNED

CHARTING

- PORTS- 1:15000, APPROACHES 1:50000, COASTAL 1:150000 & PASSAGE 1:500000
- TOTAL 104 ENC_s/PNC_s PLANNED(80 FOR RS & 24 FOR AG) -24 WILL BE PRODUCED BY APR13
- 140BASE CHARTS/SURVEYS1:25000(SPL APPLNS)
- USER NEEDED VALUE ADDED P&S PLANNED
- HDM STUDY IN HAND-IMPLEMENT FROM 2013
- UPDATING SERVICES BEING ESTABLISHED 2012
- FULLY EQUIPPED WITH CARIS SOFTWARES

MARINE SCIENCES

- DEPT OF MARINE SCIENCES ESTABLISHED
- 12 TIDE GAUGES- DATA BEING RECEIVED
- MARINE SCIENCES FORECASTING SERVICE(MSFS) PLANNED
- STAKE HOLDERS INTERESTS VERY ENCOURAGING
- POTENTIAL CORAL REEFS MAPPING
- METHODOLOGIES WILL BE FIRMED UP IN 2012
- DATA PART OF GIC FOR DISSEMINATION

CURRENT SURVEY STATUS

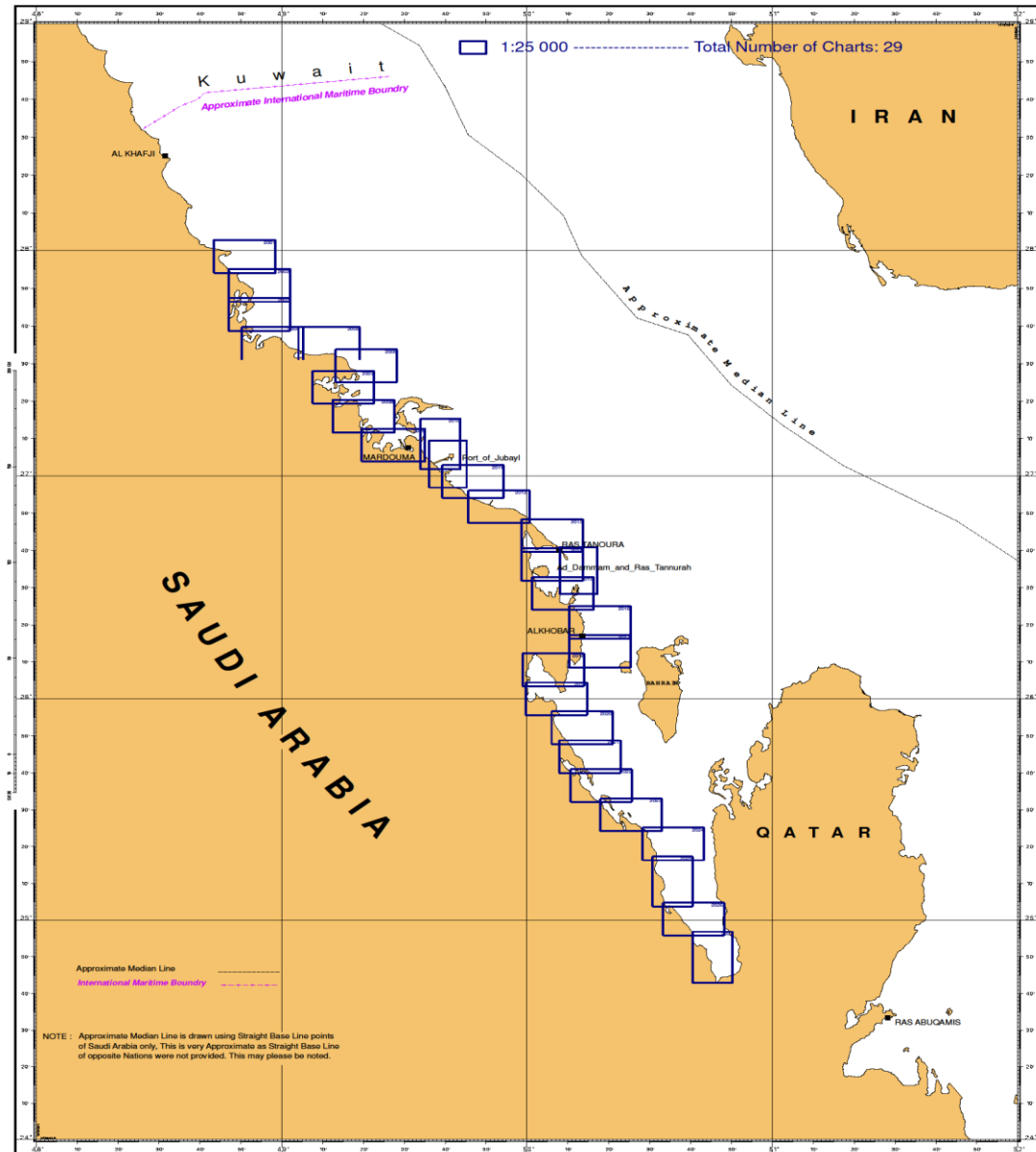
- RED SEA—16000SKM SURVEYED BY NOV 12(5%)
- JEDDAH PORT SURVEY- EDC SEP 12(2 ENC_s)
- OTHER MAJOR PORTS SURVEYS – PRIORITY AREA
- TIDAL PREDICTION FOR 12 TG STN FROM 2013
- NO MAJOR PROBLEMS ENCOUNTERED THOUGH CHART DATA IS VERY OLD
- AG SURVEYS - PLANNED TO START IN 2013
- QC/QA & ENC_s PRODUCTION WITHIN GCS

2012 PROJECTS

- HSP 4- 4000 SKM- LIDAR CUM MBES – 6 ENC_s
- MS DATA BUOYS (3) IN RED SEA – OCT 12
- LOCAL & EXPAT MANPOWER – 30
- RECOGNITION FOR CAT B HYDRO & MC COURSES BY THE IBSC IN MAY 2012
- ESTABLISHMENT OF PMT QC/QA SECTION
- 20 M HYD SURVEY LAUNCHES (3) WITH COMPLETE EQUIP (JIZAN, ALWAJH & AL KHOBAR)
- CAPACITY BUILDING TRG FOR SAUDIS

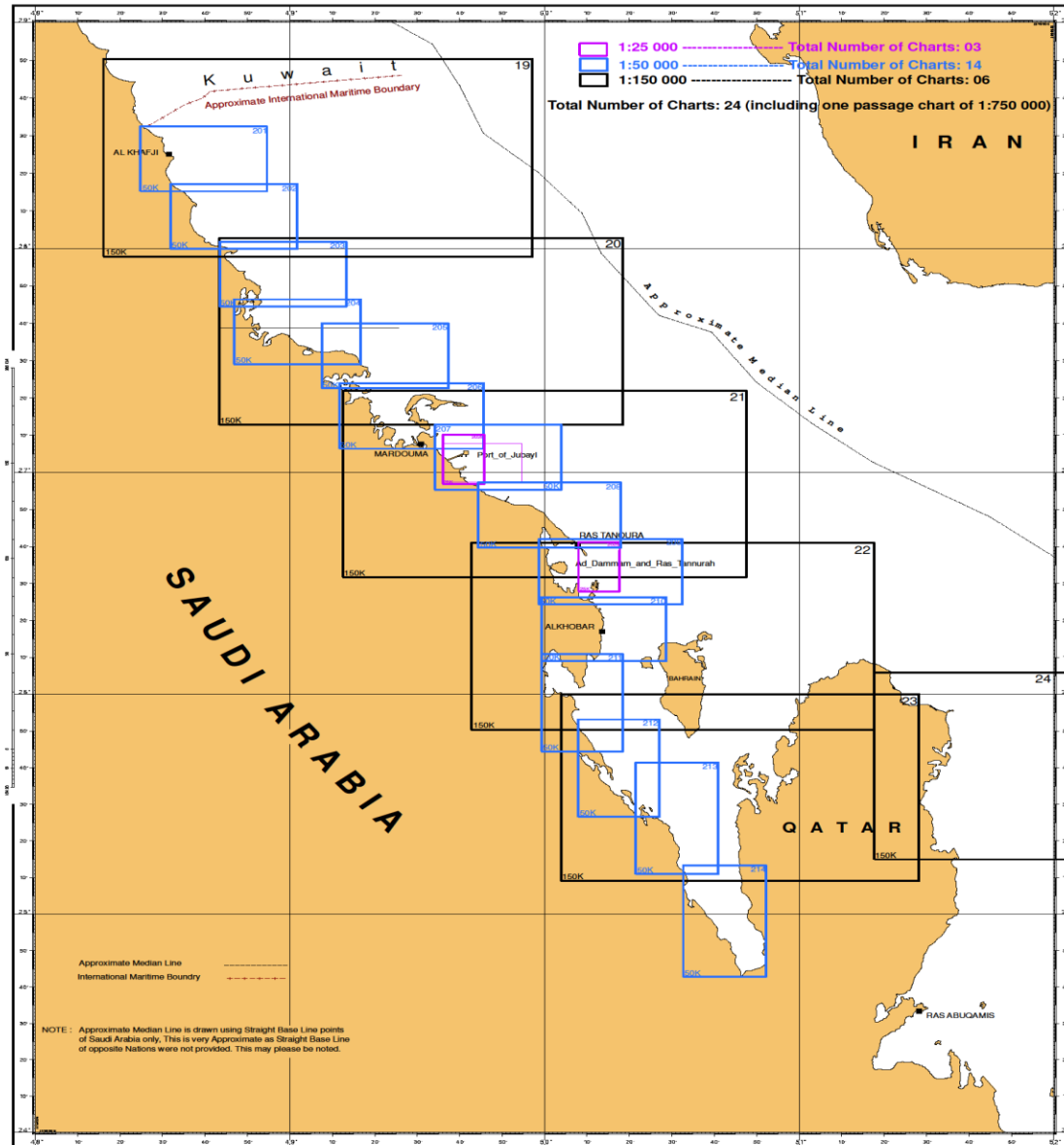
BASE CHARTS - AG(1:25000)

INDEX CHARTS OF ARABIAN GULF 1:500 000 at 20°N Lat



CHARTING SCHEME-AG

INDEX CHARTS OF ARABIAN GULF 1:750 000 at 26°30'N Lat

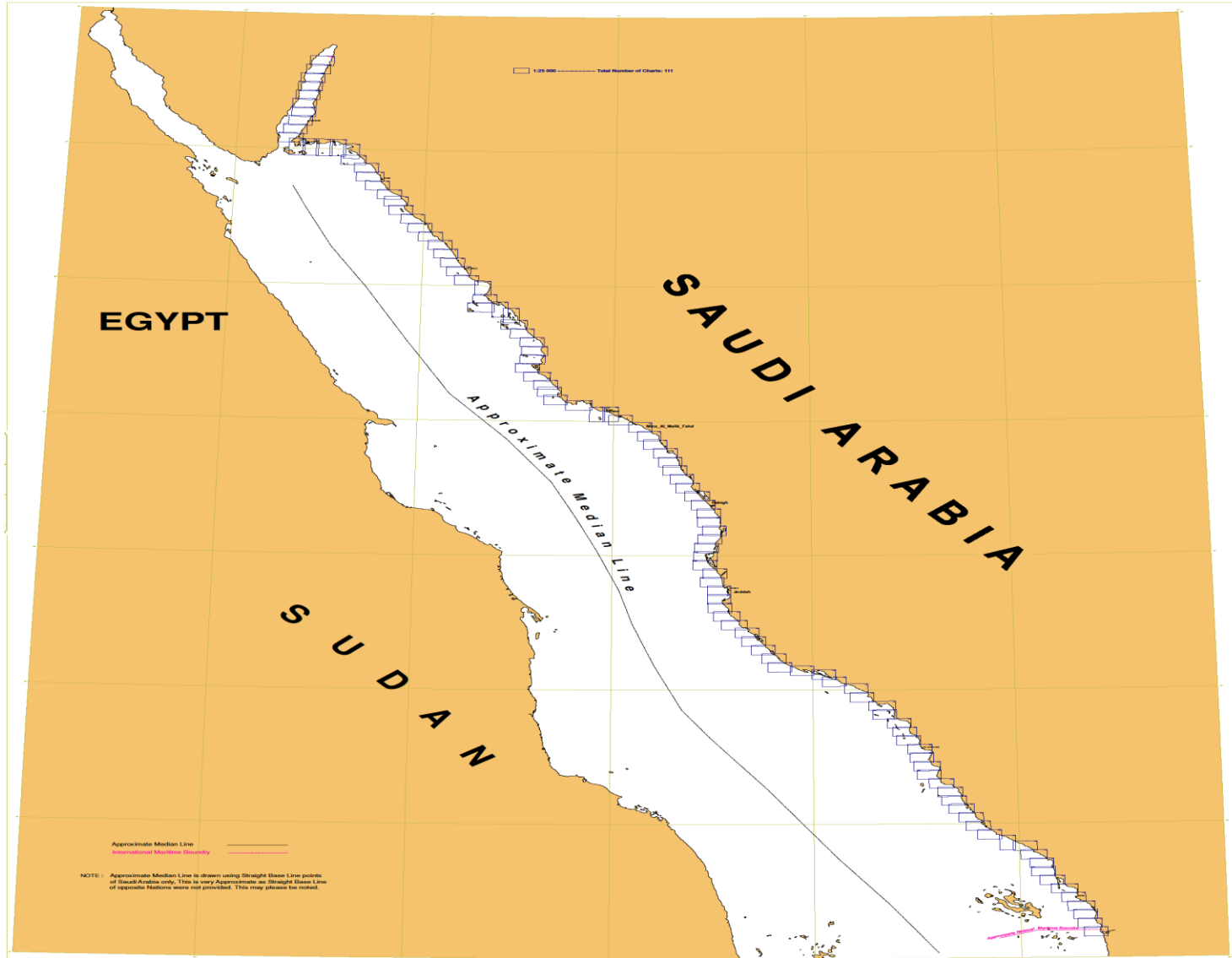


BASE CHARTS- RED SEA(1:25000)

SCHEMING OF 1:25000 SERIES OF CHARTS

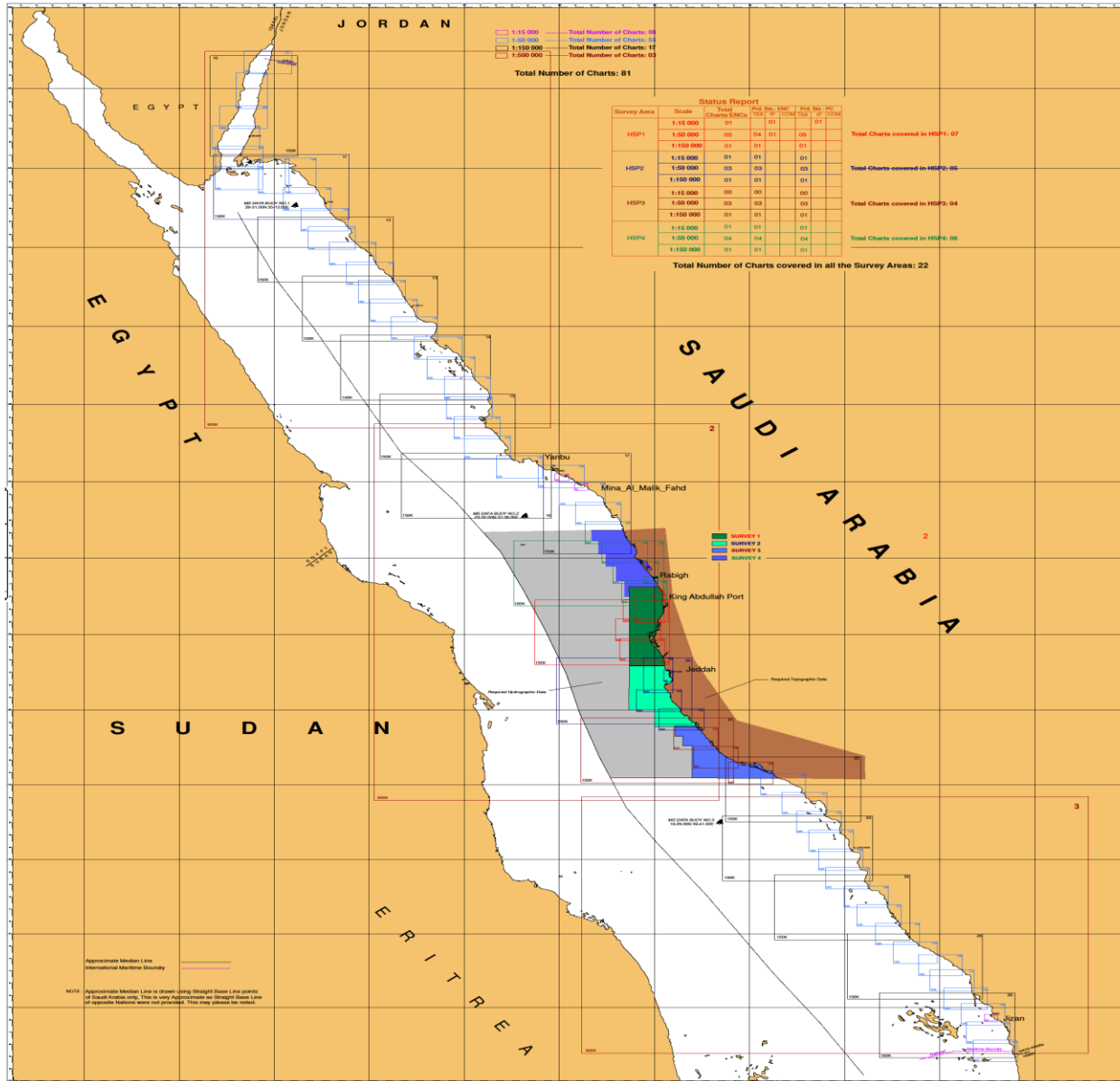
Projection: Universal Transverse Mercator

Scale 1: 500 000

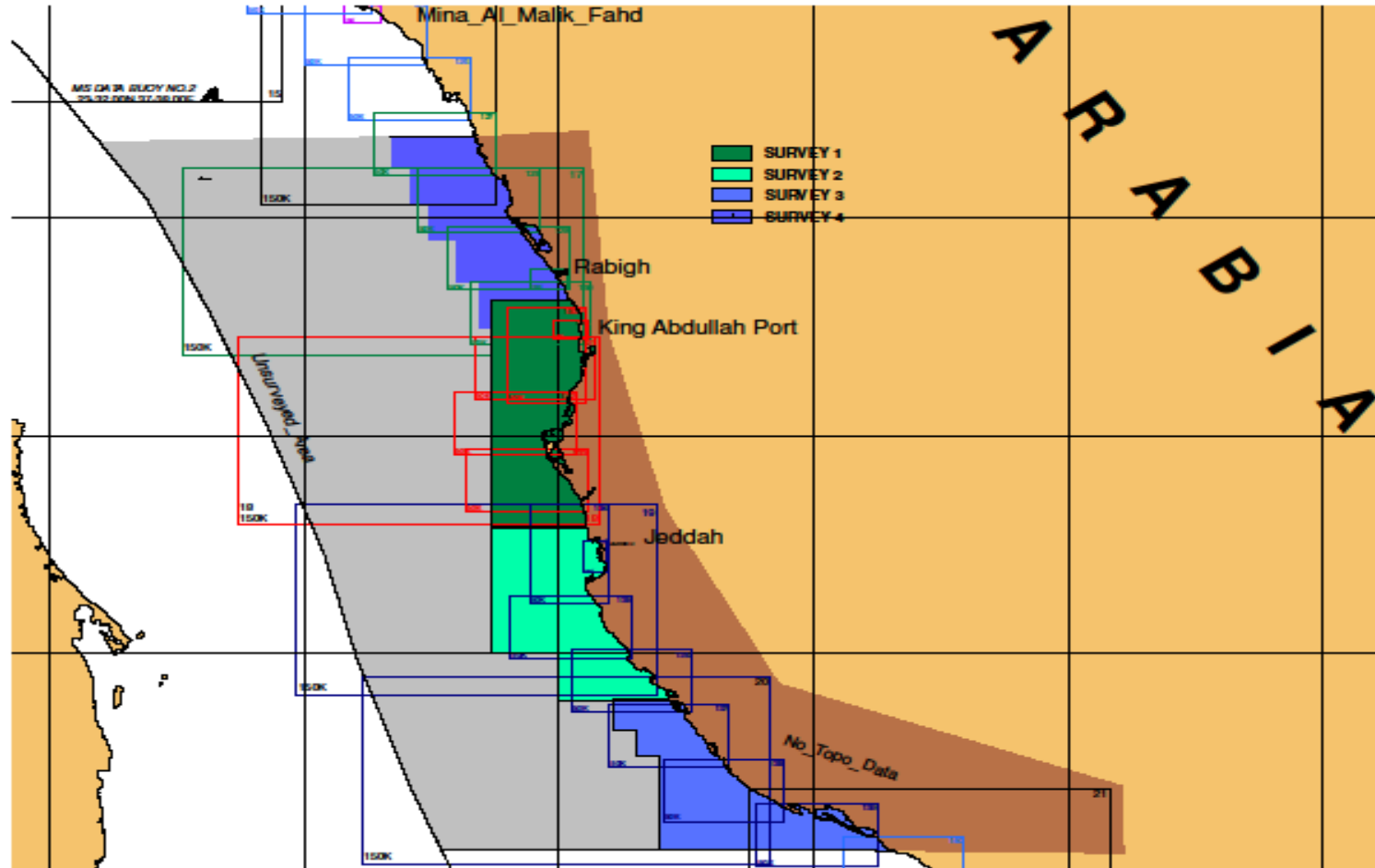


CHARTING SCHEME- RED SEA

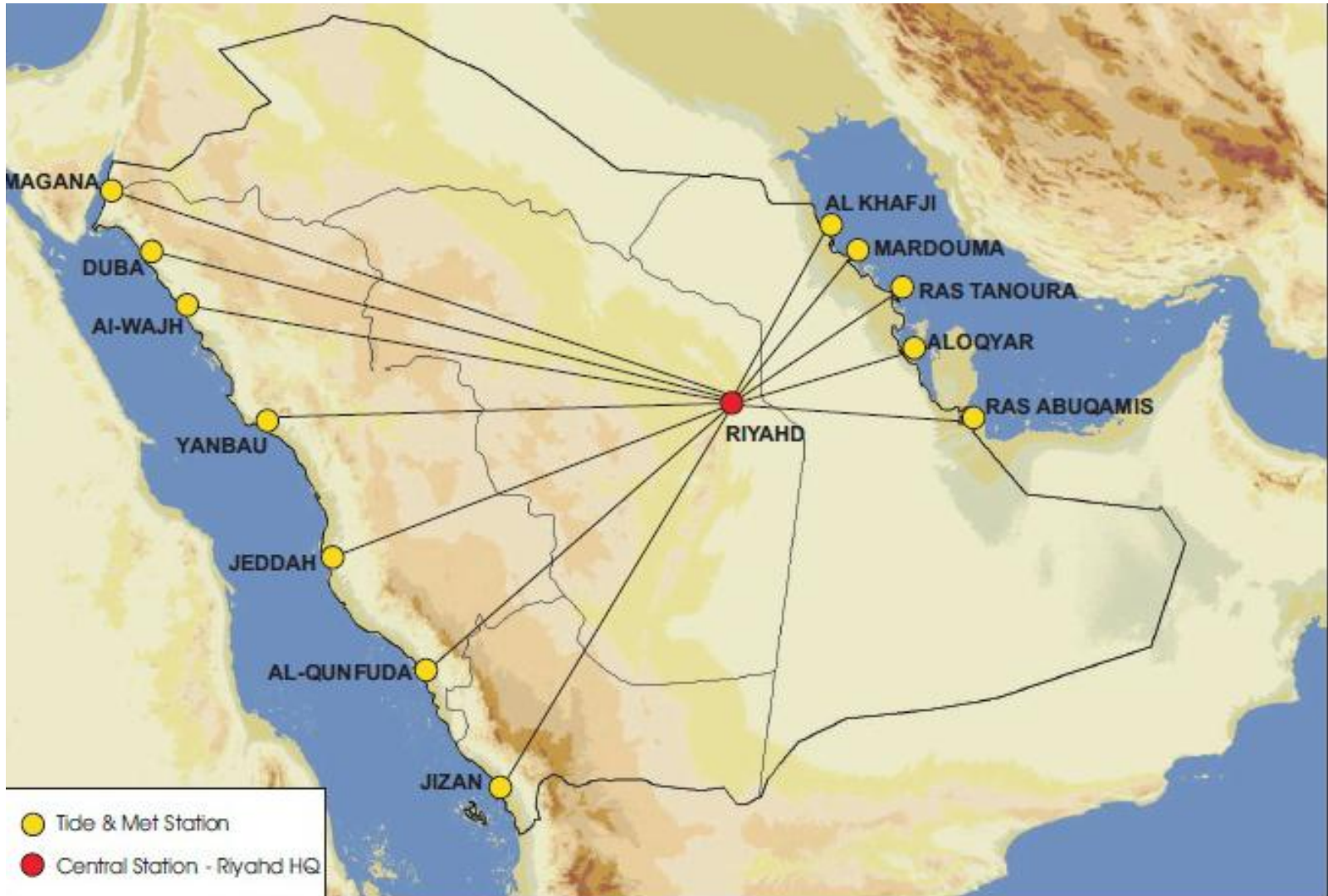
INDEX CHARTS OF RED SEA
 Projection: Mercator
 Scale 1:500 000 at 22°N Lat

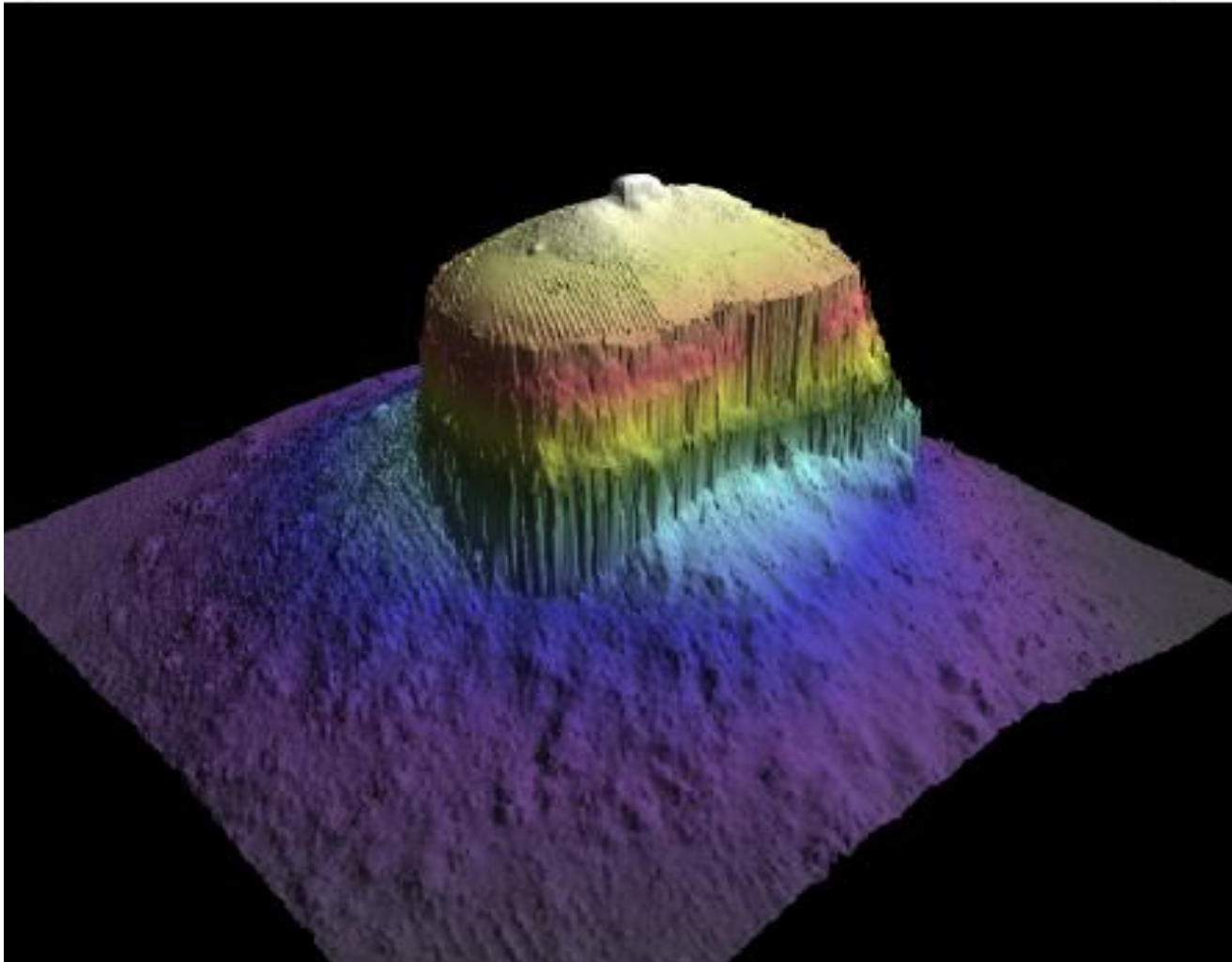


HSP 1 TO 4



NTGN PROJECT

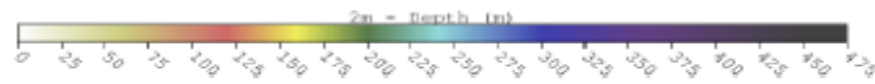




Seamount cell 04

Position: 22° 28.46 N
Least Depth: 3,50m

38° 57.46 E



CONCLUSION

- GCS – SOARING FOR BEST IN HYDROGRAPHY

