



NATIONAL REPORT

THE HYDROGRAPHIC DEPARTMENT ROYAL THAI NAVY (HDRTN)

12th NORTH INDIAN OCEAN HYDROGRAPHIC COMMISSION

Colombo, Sri Lanka

20th - 23rd March 2012

HDRTN's Structure

▼ Hydrographic Headquarter



▼ Technical Division



▼ Cartographic Division



▼ Navigational Supporting Center



▼ Surveying Division



Hydrographic Department

Hydrographic Department
222 Rintangrodfaikao Rd., Bangna,
Bangkok 10260
Email: hydrotech@navy.mi.th

▼ Meteorological Division



▶ Navigational Services Division



▶ Aids to Navigation Division

▼ Surveying Vessel Division



▼ Oceanographic Division



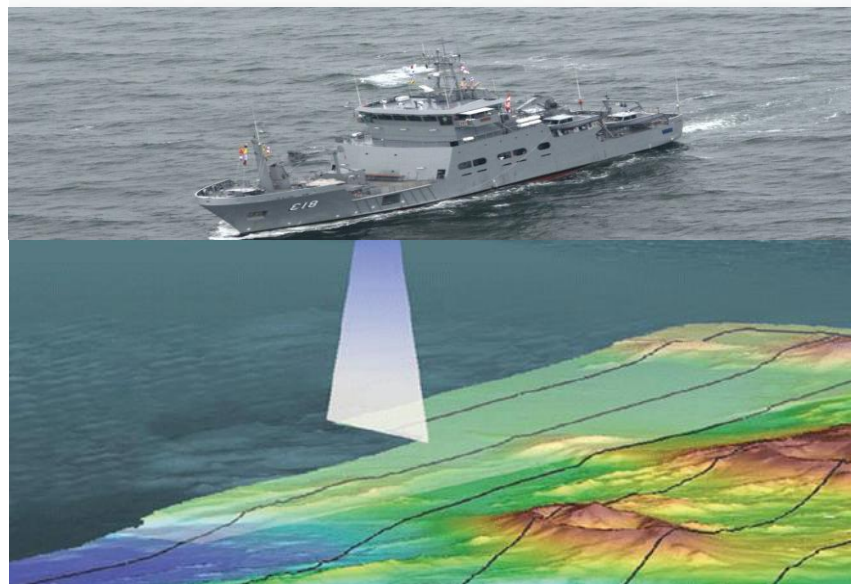
HDRTN's Principle Tasks

- Surveying and producing navigational charts & ENC and publications covering Thai waters
- Oceanographic surveys and tidal prediction
- Aids to navigation maintenance
- Marine meteorological forecasting
- Thailand standard time keeping
- Navigational equipment procurement and maintenance
- Disaster warning center

Survey

Hydrographic Survey Activities

Type of survey	FY 2011
Harbor Survey	1
Approach Survey	2
Coastal Survey	2
Total	5



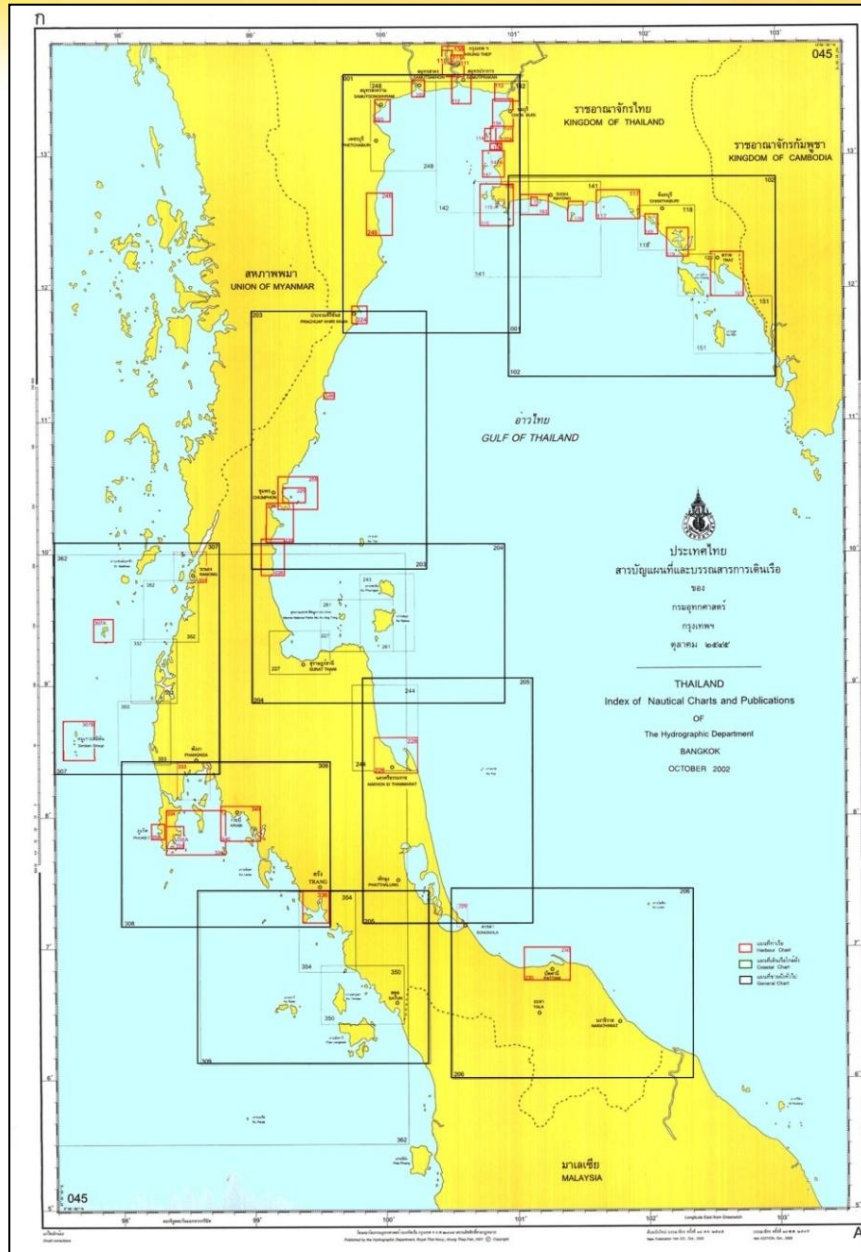
New Charts and Updates

Paper Charts

Type of Production	FY 2011
New Chart	1
New Publication	1
New Edition	3
Re-Print	2
Total	7



New Charts and Updates (cont.)



*HDRTN totally produced
76 paper charts covering Thai
waters*

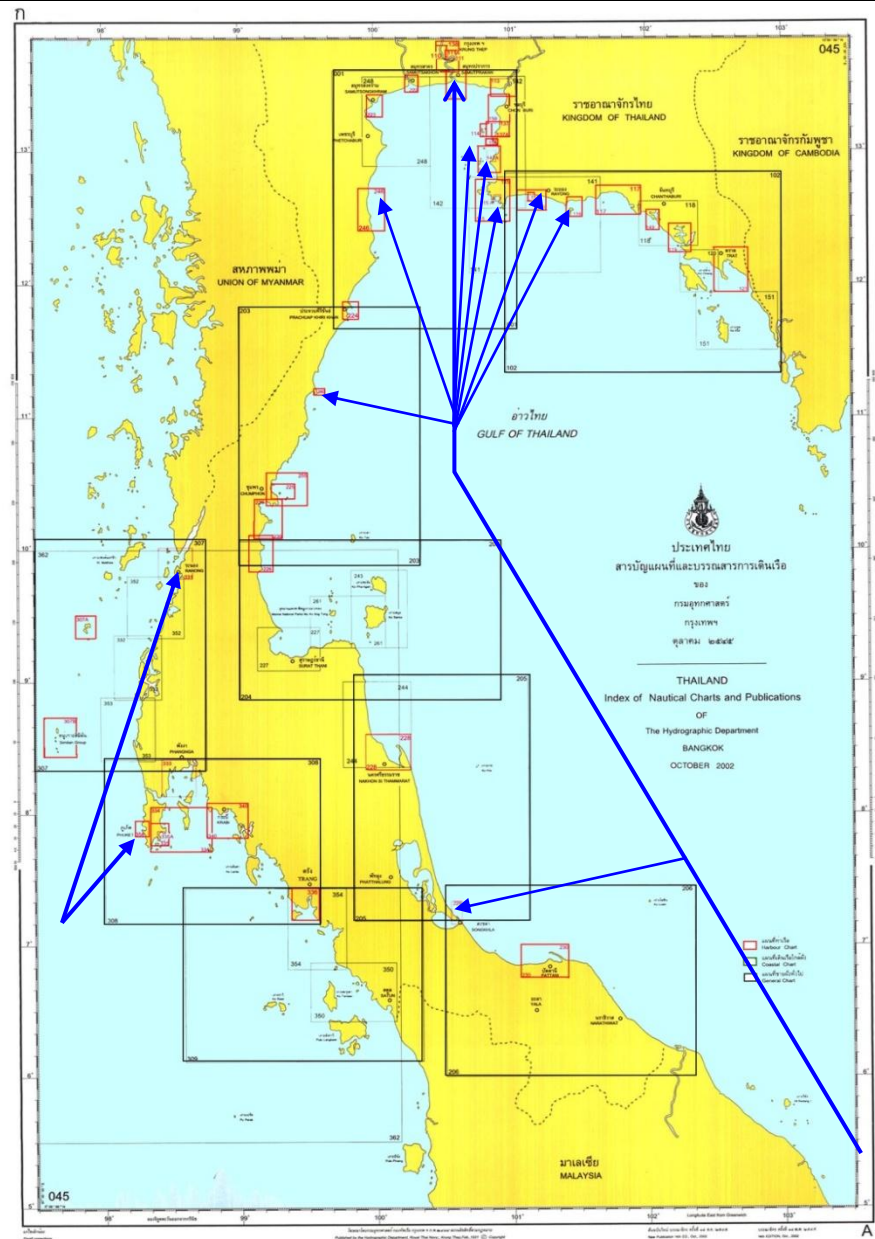
New Charts and Updates (cont.)

ENC Production for Year 2011

44 cells to be produced
Covering 13 Thai Main Shipping Routes

Band Planned 44 / Available 31

-Overview	1 /	1
-General	4 /	1
-Coastal	11 /	8
-Approach	15 /	10
-Harbour	12 /	10
-Berthing	1 /	1



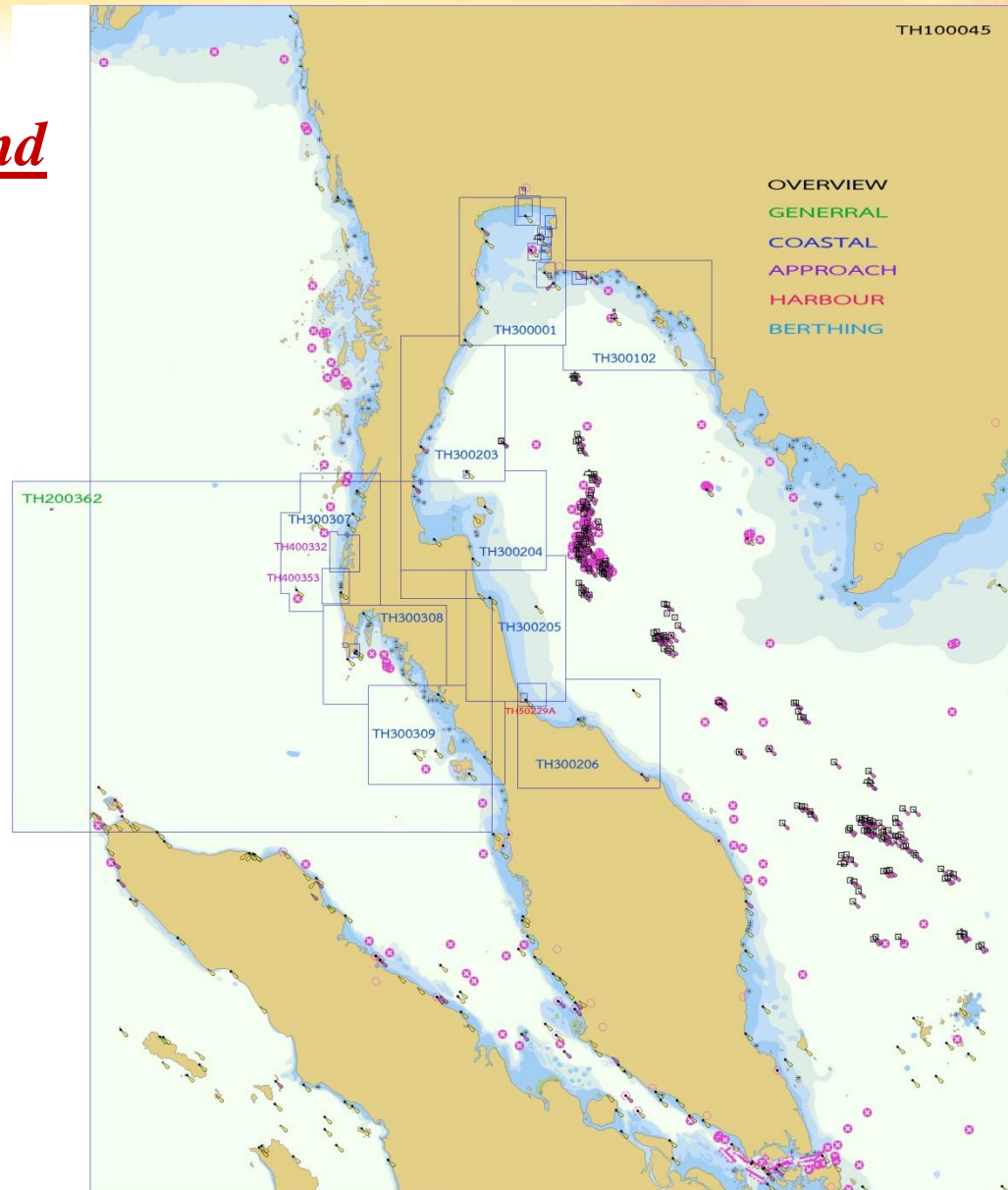
New Charts and Updates (cont.)

ENCs of Thailand

Band 1

Band 2

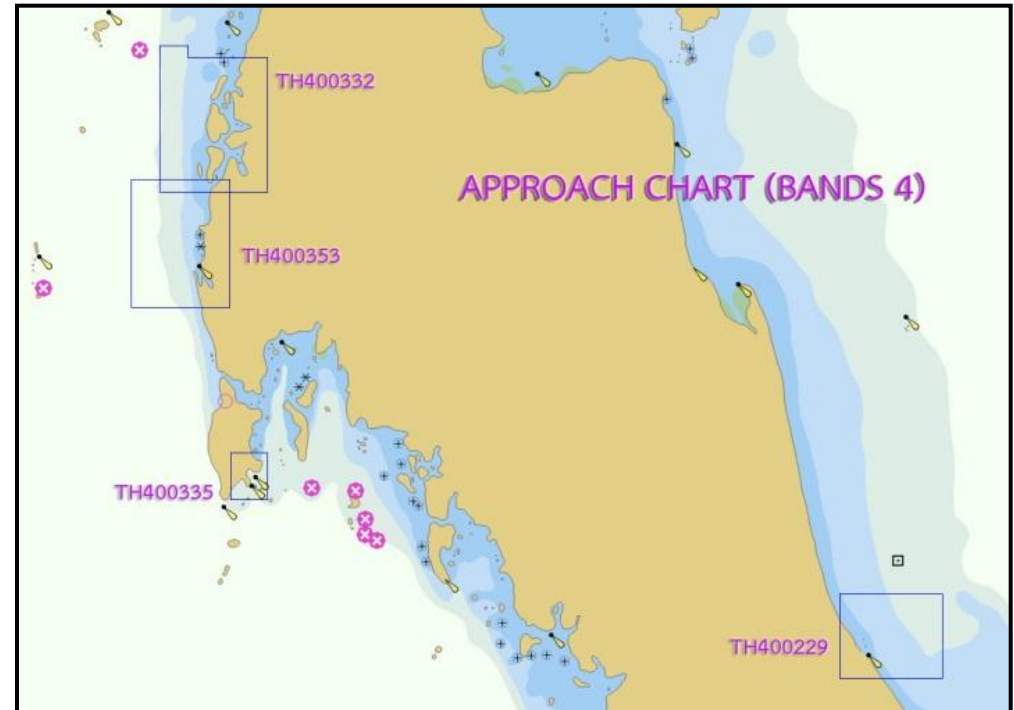
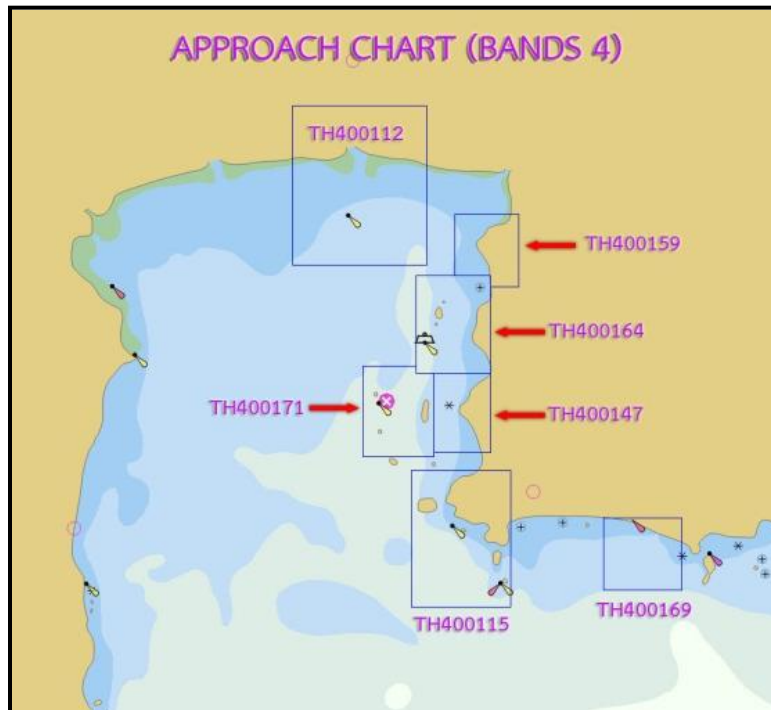
Band 3



New Charts and Updates (cont.)

ENCs of Thailand

Band 4

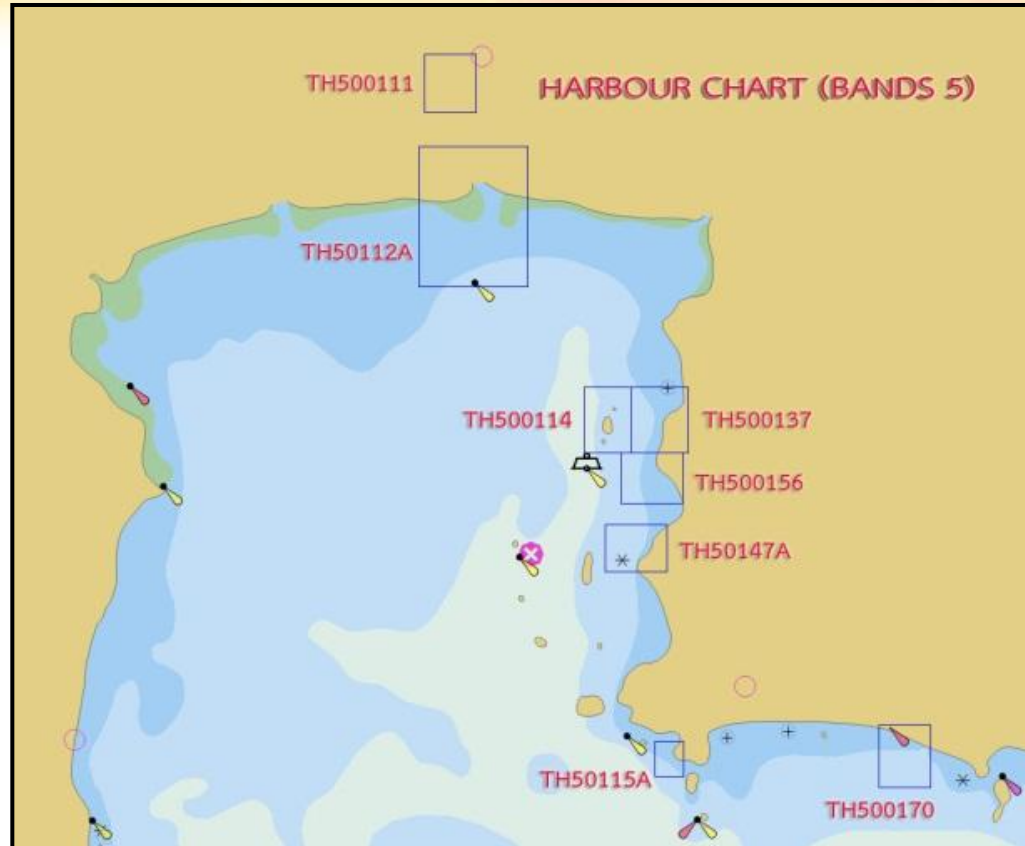
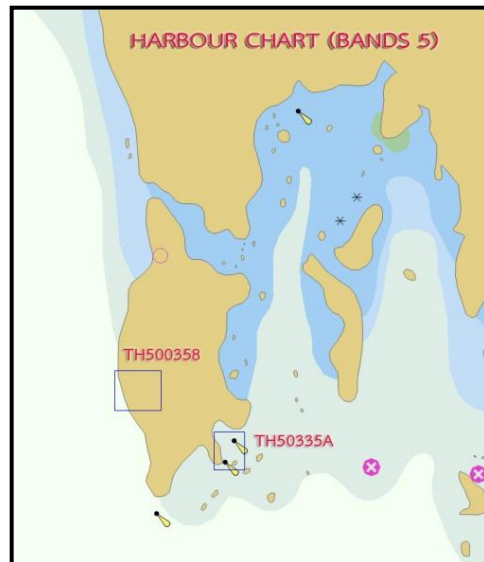


New Charts and Updates (cont.)

ENCs of Thailand

Band 5

Band 6



New Charts and Updates (cont.)

INT Charts Activities

- HDRTN proposed 4 INT Charts in Area J on the Andaman Coast.
- HDRTN has already received the allocation of INT Chart Numbers from National Hydrographic Office of India.
- HDRTN planned to resurvey in this area.

INT No.	Producer	National No.	Scale 1:
7033	TH	362 (Satun to Ranong)	700,000
7448	TH	308 (Phuket to Kantang)	200,000
7449	TH	335 (Phuket Harbour)	22,000
7450	TH	335A (Ao Man and Approaches)	8,000



New Navigational Publications and Updating

- INT 1 symbols, abbreviations, terms used on charts (translated into Thai)
- List of Light and Buoys in Thai Water 2012
- Tide table in Thai Water 2012
- Table of Moon Rise/Set book year 2012, Sun Rise/Set book year 2012, Sunrise-Sunset and Moonrise-Moonset Thailand 2012
- Notice to Mariners Reports in Thai and English 2012, Annual Summary of Notices to Mariners 2012, etc.



C-55 Summary

Status of Hydrographic survey

	A	B	C
Depth < 200 m	100	38	0
Depth > 200 m	15	89	85

Status of Nautical Charting Information

	A (% INT Charts)	B (% RNC)	C (% ENC)
Offshore passage/Small scale	40	-	40
Landfall and Coastal passage/Medium scale	100	-	73
Approaches & Ports/Large Scale	93	-	75

C-55 Summary (cont.)

Status of Maritime Safety Information

Navigational Information

SERVICE	Yes	No	Partial	Notes
Local warnings	✓			Issued by HDRTN Coordinated with Bangkok Radio
Coastal warnings	✓			
Navarea warning NAVAREA	✓			
Information on ports and harbours	✓			By Port Authority and Marine Department

C-55 Summary (cont.)

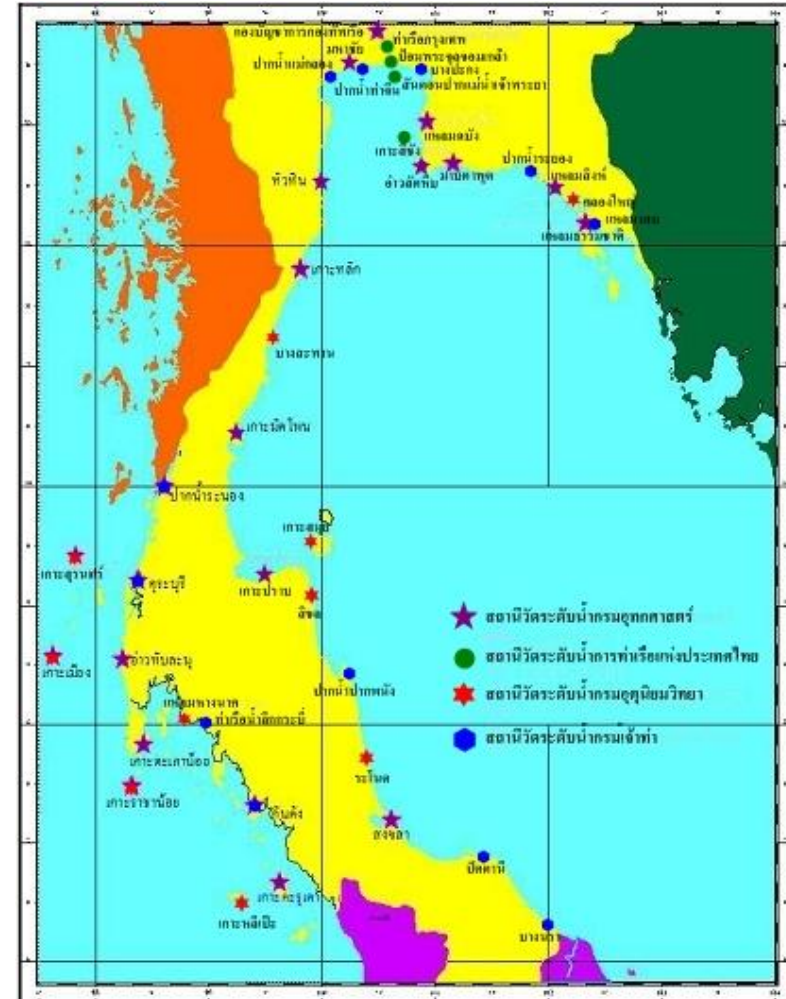
Status of Maritime Safety Information (continued)

GMDSS Implementation

SERVICE	Yes	No	Partial	Notices
Master Plan	✓			Under proceeding by Marine Department
A1 Area1			✓	
A2 Area2		✓		
A3 Area3		✓		
NAVTEX	✓			CAT Telecom Co,Ltd.
Safety NET	✓			

Oceanographic Activities

- collecting tidal data/maintenance 28 tidal Stations. (8 of them for tsunami warning system on Andaman coast)
- Two tide gauges have been upgraded along the Chao - Phraya River for real-time capability and changing sensor to acoustic/radar tide gauges.





THANK YOU/QUESTION?