



MINISTÈRE DE LA DÉFENSE  
MARINE NATIONALE



Saint-Mandé, the 12<sup>th</sup> of February 2007  
N° 67 SHOM/EG/NP

SERVICE HYDROGRAPHIQUE ET  
Océanographique DE LA  
MARINE

Bureau études générales

Dossier suivi par  
ICETA Yves Guillam  
☎ : 01 53 66 97 80 (.....77)  
E-mail : yves.guillam@shom.fr

**France's national report to the 7th North Indian Ocean Hydrographic Commission (NIOHC)**

**1. Hydrographic Office: General,**

To date, SHOM is still a Navy support service reporting to the Chief of the Naval Staff. Its transformation under SHOM's name into an *Établissement Public*, i.e. a public establishment endowed with a legal personality independent from the French Government, is subjected to final approval from France's highest authorities.

Although SHOM's head office has been moved from Paris to Brest in November 2005, the department in charge of international relations remained in Paris. It is located presently within the premises of the French National Geographic Institute (IGN) in Saint-Mandé, a few hundred metres away from Paris' "*Porte de Vincennes*".

On the 7<sup>th</sup> of June 2004, SHOM was awarded the ISO 9001:2000 certificate for its activities performed for the safety of navigation, including surveys and nautical information. This certification, which has already been presented in previous French national reports, was further extended in the summer 2006 to all SHOM's remaining activities, including defence and training.

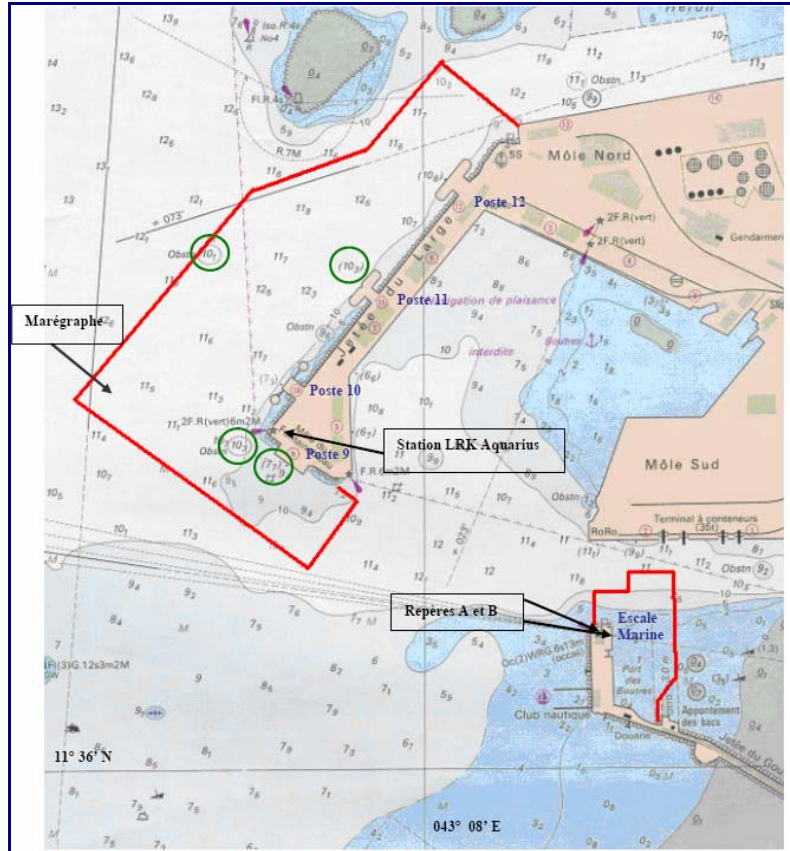
**2. Surveys: Coverage of new surveys  
New technologies and /or equipment  
New ships  
Problems encountered**

**Coverage of new surveys**

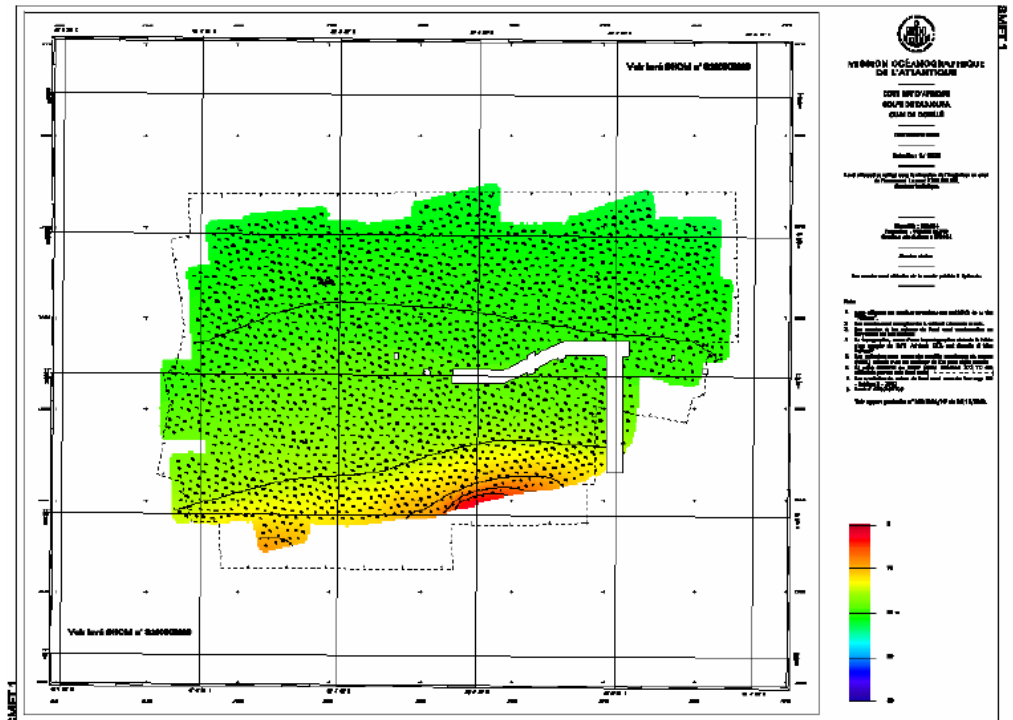
Since the 6<sup>th</sup> conference in Colombo (14<sup>th</sup> – 16<sup>th</sup> March 2006), SHOM has conducted, or participated in, the following main surveys in the NIOHC area:

.../...

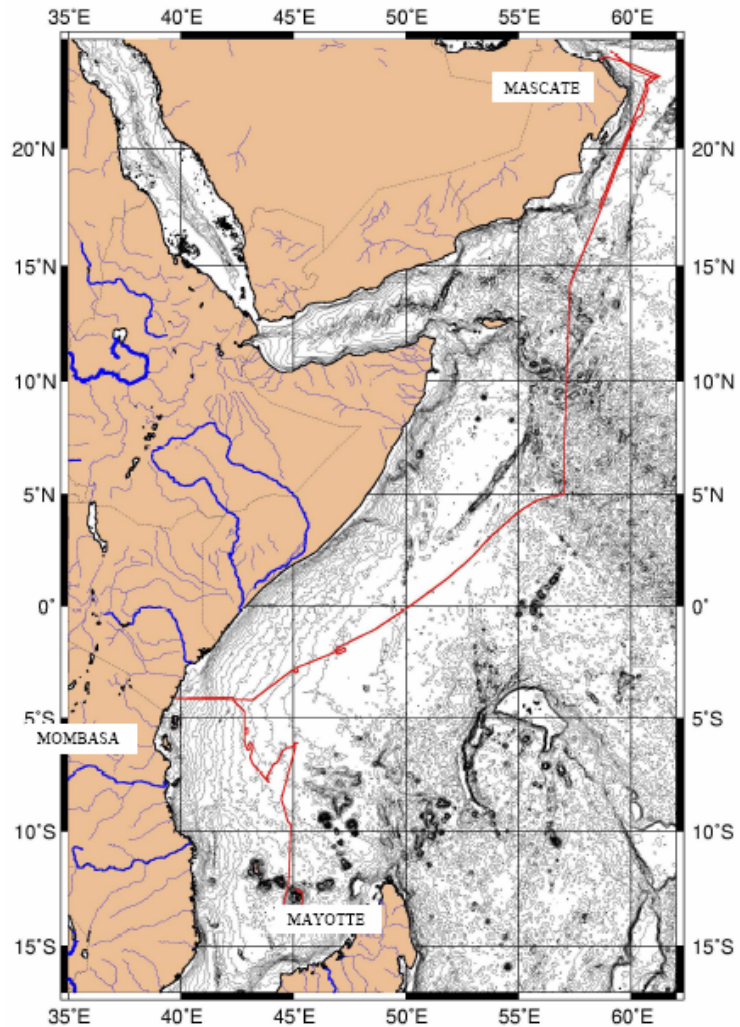
- In April/May 2006: the Ocean Survey research vessel *Beautemps-Beaupré* conducted a complementary MBES survey in the port of Djibouti



- A previous survey of the port of Djibouti had been performed by Navoceano (US Navy Surveys) in January and February 2006. This was completed in October 2006 by SHOM's MBES survey of the Doraleé oil terminal:



- From May to July 2006: *Beautemps-Beaupré* performed sediment measurements on the following track:



then proceeded with further surveys in the SAIHC area.

Further deployment has been planned in 2007 in the NIOHC area. This will give *Beautemps-Beaupré* the opportunity to visit SHOM's Yemen colleagues in March.

#### **New technologies and /or equipment**

##### **New ships**

NTR

#### **Problems encountered**

As many other IHO member states, France is tasked with collecting nautical information and surveying international waters that would otherwise remain uncharted. However, it happens that SHOM only learn by accident of surveys performed by private companies, or even other HOs, in its areas of charting responsibility and has to insist to obtain communication of IHO-compliant data relevant to INT charts and nautical information.

**It is reminded that survey results should be automatically communicated to the appointed charting authority. In addition, provision should be made in all contracts awarded to private survey companies to the effect that hydrographic data pertinent to the safety of navigation be communicated to the charting authority appointed within the IHO.**

### 3. Charts and Publications:

#### a. Charts

**New charts & updates**  
**ENCs**  
**RNCs**  
**INT charts**  
**National paper charts**  
**Other charts e.g. for pleasure crafts**  
**ENC Distribution method**  
**Problems encountered**

#### New charts & updates (planned from 2008 to 2010)

N° National	N° INT	Scale 1:	Title
6781	707	3 500 000	Maldives to Sumatera (fac-simile of GB 4707).
		350 000	Abd Al Kuri to Suqutra Facsimile of UK 5 including SHOM new surveys
		350 000	Raas Caseyra to Suqutra Facsimile of UK 100 including SHOM new surveys
6947		1 080 000	<i>Abords et partie Est du Golfe d'Aden.</i> – (new surveys)
7519	7114	200 000	<i>Bab el Mandeb et Golfe de Tadjoura.</i> – (new surveys)
7520	7115	50 000	<i>Abords de Djibouti.</i> – (new surveys)

#### ENCs

To date, SHOM has produced some 205 ENCs.

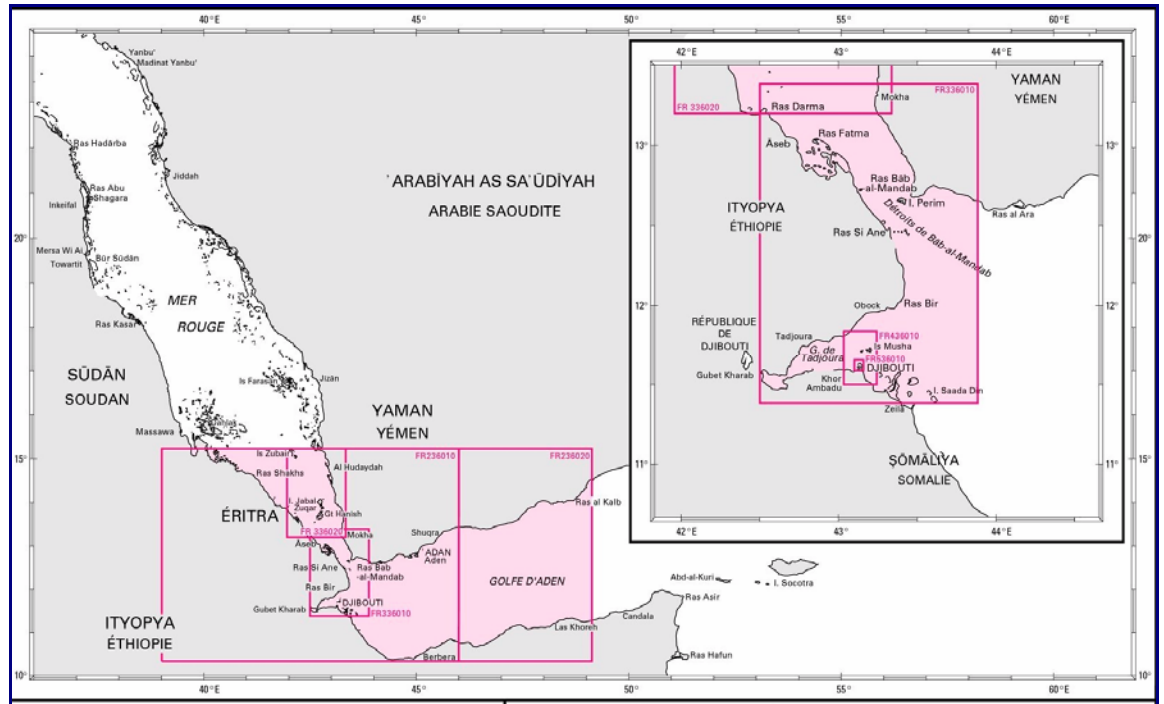
Europe approaches are well covered, on account of commercial and passengers sailing requirements. Production in non European waters (areas of international responsibilities, overseas territories) is progressing.

In line with the WEND task group and to make life simpler, France reminds that small scale ENC schemes should be established as closely as possible to INT chart schemes.

All French ENCs are distributed by Primar Stavanger RENC.

SHOM has released in March 2005 all the ENCs ascribed to France, i.e.

ENC	Usage Band	Scale 1:	INT paper chart Nr	Title
FR536010	Harbour	10 000	7115	Djibouti harbour
FR436010	Approach	50 000	7115	Approaches to Djibouti
FR336020	Coastal	200 000	7118	Al Hudaydah to Al Mukha
FR336010	Coastal	200 000	7114	Bab El Mandeb and Gulf of Tadjoura
FR236010	General	700 000	INT 7004 & French Nr 7099	Gulf of Aden – Bab El Mandeb
FR236020	General	700 000	7004	Gulf of Aden – Central Part



**INT Charts**

According to the scheme prepared by India, France has been allocated 4 INT charts, which have all been produced, as shown in the following table:

National Nr	INT Nr	Scale 1:	Title / observations
6987	7004	700 000	<i>Partie Ouest du golfe d'Aden – Bab-el-Mandeb – Published in 2003</i>
7519	7114	200 000	<i>Bab el Mandeb &amp; Golfe de Tadjoura. – Published in 2003</i>
7518	7118	200 000	<i>De Al Hudaydah à Al Mukhā – Published in 2003</i>
7520	7115	50 000	<i>Abords de Djibouti - Published in 2003</i>

**b. Publications**

**New publications  
Updated publications - Editions  
Means of delivery e.g. paper, digital  
Problems encountered**

<b>Type</b>	<b>Nr</b>	<b>Title</b>
DIV	075	<i>Annuaire des marées pour 2007, tome 2 – Ports d’outremer</i>
DIV	085	<i>Annuaire des marées pour 2008, tome 2 – Ports d’outremer</i>

IN : sailing directions  
RSX : radio stations  
LDF List of Lights  
DIV : miscellaneous

An important regulation corpus has been developed for the establishment and use of ENC's while the equivalent standardisation for nautical books is still lagging. As a result, the rules of use of these documents are not clearly established.

**4. MSI Existing infrastructure for transmission –  
New infrastructure in accordance with GMDSS  
Master Plan  
Problems encountered**

NTR

**5. Capacity Building Offer of and/or demand for Capacity Building -  
Training received, needed, offered  
Status of national, bilateral, multilateral or  
regional development projects with hydrographic  
component. (In progress, planned, under  
evaluation or study)**

**Offer of and/or demand for Capacity Building**

France participates to the IHO Capacity Building committee and supports the IHO Regional Hydrographic Commissions of which SHOM is a member, especially the Eastern Atlantic Hydrographic Commission (EAthC) & the Southern Africa and Islands Hydrographic Commission (SAIHC), and to a lesser extent the South-West Pacific Hydrographic Commission (SWPHC) & the MESO American and Caribbean Sea Hydrographic Committee (MACHC),

Some technical visits (end of 2005; February 2006) have been performed in the EAthC and SAIHC areas (May 2006).

In March 2007, SHOM should participate to another CBC technical visit in Sudan and Yemen, together with the UKHO who is taking the lead.



## **Training received, needed, offered**

Initial training capabilities provided by SHOM are described in its yearly report available on [www.shom.fr](http://www.shom.fr).

France is aware of the language barrier that can create obstacle to technically capable, non-French speakers. Rather than proposing to attend the full French hydrographic course, which lasts about 18 month for FIG/IHO/ICA level B and a minimum of 2 years for level A, SHOM is preparing short modules in English on narrow technical fields such as ENC, delineations, military oceanography, etc.

It is also developing a short course for assistant surveyors that could be taught in the countries interested, to reduce costs and the inconvenience of having to spend years in France. The first course could take place in 2007 in the EAHC area, and be attended by port operators from West African countries.

## **Status of national, bilateral, multilateral or regional development projects with hydrographic component. (In progress, planned, under evaluation or study)**

As a result of the 2006 CBC visits in the SAIHC area, SHOM intends to increase its support to Madagascar, preferably in liaison with other IHO Members, especially South Africa who is concerned with the South West Indian Ocean Marine Highways project and possibly Norway, who is already very much involved in support of Mozambique.

SHOM follows with great interest the development of the Malacca Straits and SW Indian Ocean Marine highways. A similar project, the CHARMER Marine Highway is underway in West Africa, in spite of great difficulties to identify local representatives capable of preparing requirements acceptable to international donors.

France has signed two international agreements with Monaco (2005) and Djibouti (2006) in order to formalise the existing co-operation and sharing of hydrographic responsibilities within the UNCLOS convention. Two more agreements are expected to be signed shortly with Morocco and Senegal; other are contemplated wherever it appears that France still provides hydrographic services to foreign countries, or complements those already in place, or might even help improving friendly countries' existing hydrographic capacities. The idea is to promote further co-operation within the IHO/CBC and facilitate technology transfer to those countries that have kept historical links with France or with whom new links have been formed.

## **6. S-55 Latest update**

France has updated its part of S-55 database and implemented a regular procedure for future updates.

## **7. Oceanographic activities**

- General**
- GEBCO/IBC's activities**
- Tide gauge network**
- New equipment**
- Problems encountered**

SHOM is member of the GEBCO Directing Committee and is an active partner of two International Bathymetric Charting projects (Eastern Atlantic Ocean, Indian Ocean).

It is worth noting that SHOM maintains a digital tide gauge network as part of the French contribution to the IOC Tsunami Alert System scheduled in a first phase for the Indian Ocean, and meant to be further extended to the rest of the World.

## **8. Conclusions**

NTR

p.p. *Ingénieur en chef Yves Guillam*  
*Ingénieur principal Serge Alain*  
Deputy Head, General Affairs