



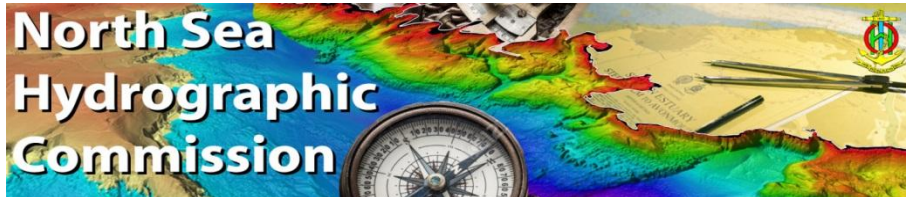
Royal Netherlands Navy
Hydrographic Service



32nd NSHC Conference

Agenda item A.4

Selection IHO Council



Captain Marc van der Donck
Chair NSHC

June 2016



Content

Flow diagram

- Eligible NSHC MS and no of seats
- NSHC MS candidacy
- Candidate NSHC MS selection
- MS with greatest hydrographic interest

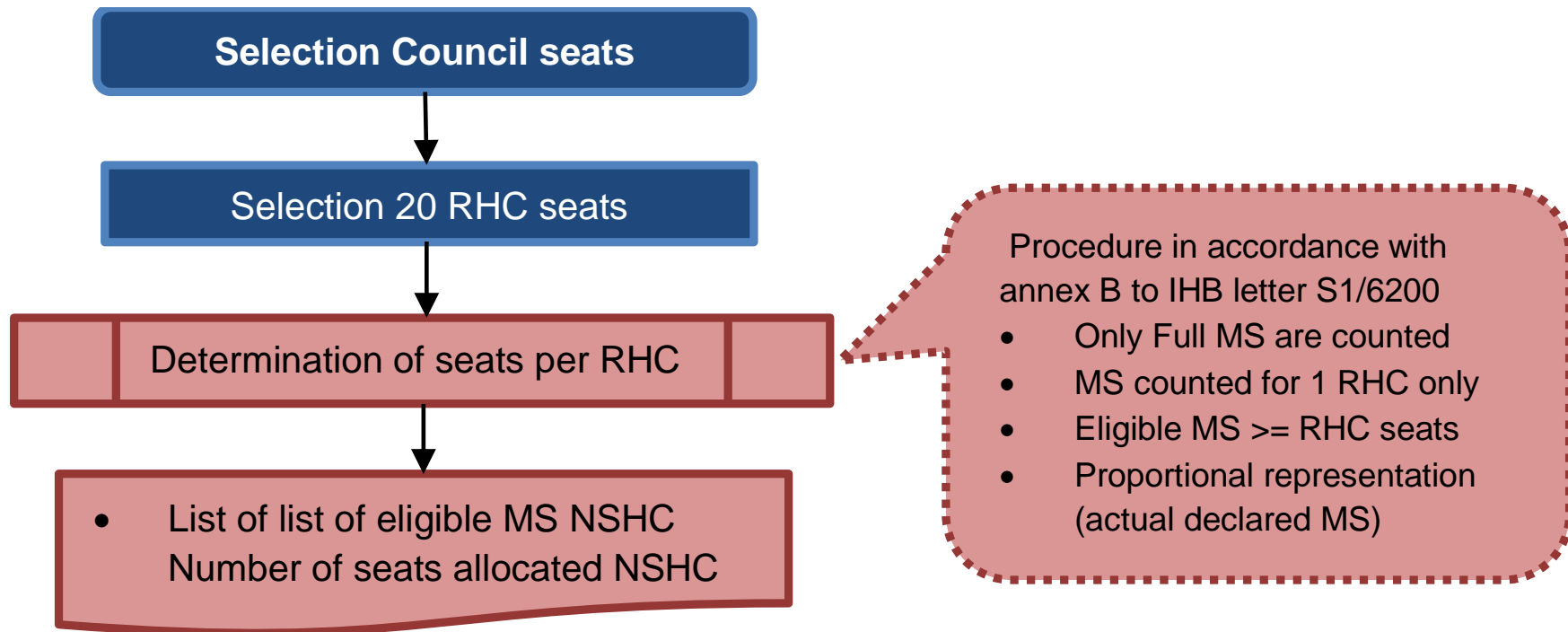
Regional representation

- Use of the word “representative”
- Decision Points on wording and meaning

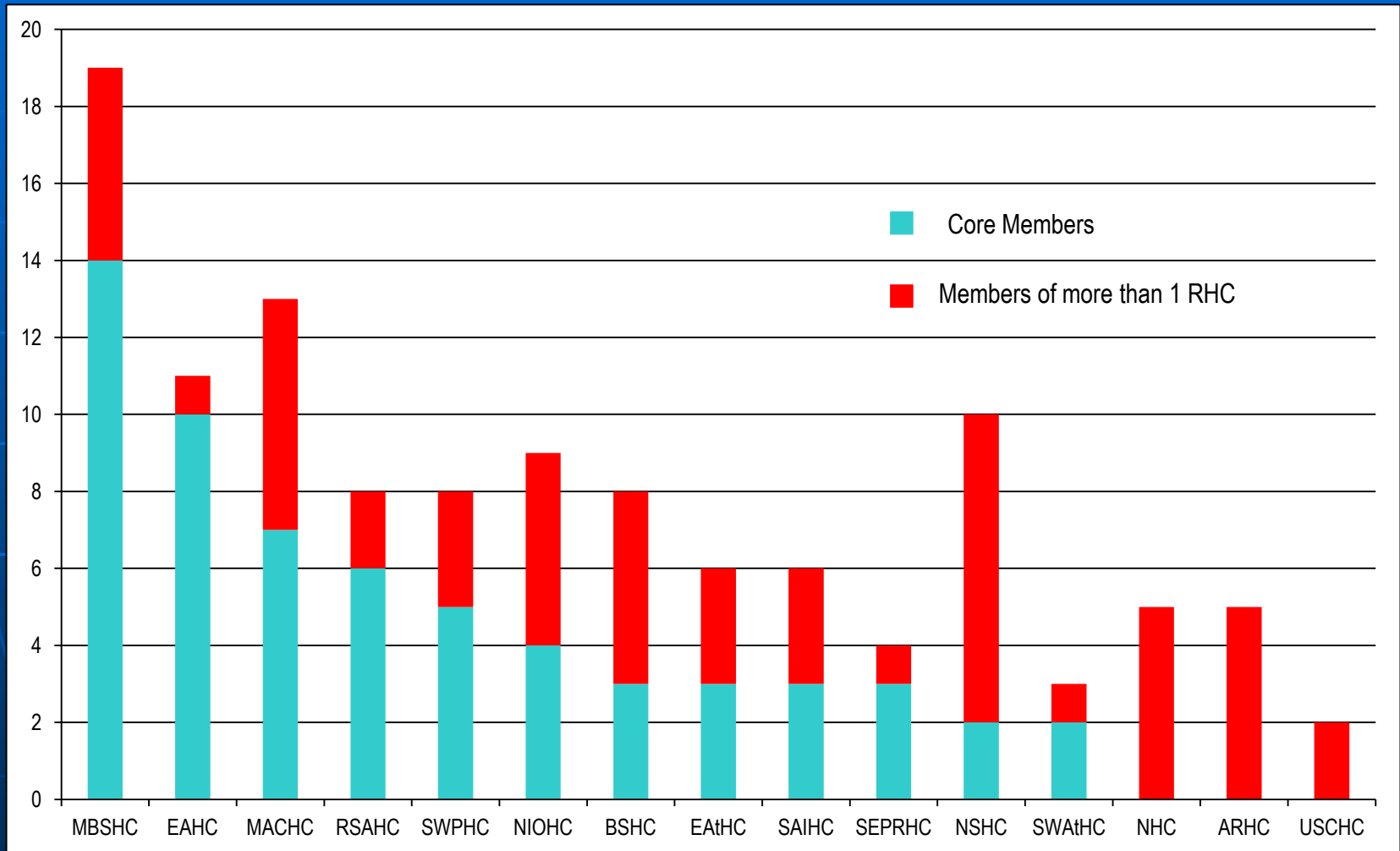
Voting procedure



Flow: Eligible NSHC MS and no of seats



Statistics - *Statistiques*



Statistics - Statistiques

RHC / CHR	MBSHC	MACHC	NSHC	EAHC	NIOHC	BSHC	SWPHC	RSAHC
Members/Membres	19(/20)	13	10	11	9	8	8(/9)	8
Core Members Noyau	14(/15)	7	2	10	4	3	5(/6)	6
Seats/Sièges								
-minimum	2	2	1	2	1	1	1	1
-maximum	3	2	2	2	2	2	2	2

RHC	EAtHC	SAIHC	NHC	ARHC	SEPRHC	SWAtHC	USCHC	Total
Members/Membres	6(/7)	6	5	5	4	3	2	117(/120)
Core Members Noyau	3(/4)	3	0	0	3	2	0	62 (/65)
Seats/Sièges								
-minimum	1	1	1	1	1	1	1	18
-maximum	1	1	1	1	1	1	1	(24)



Simulations

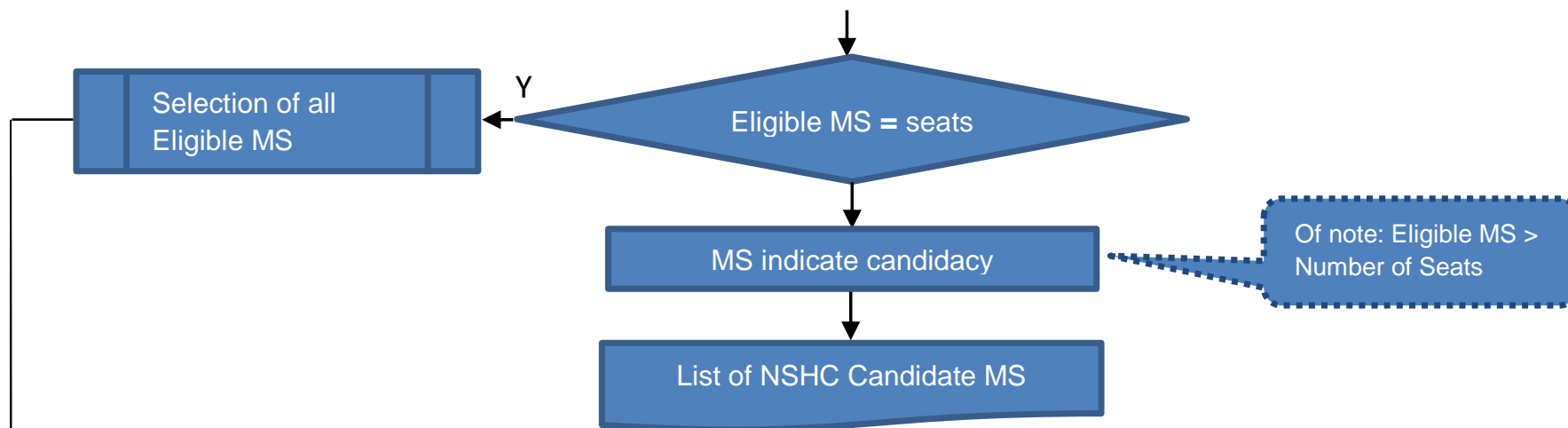
RHC / CHR	MBSHC	MACHC	NSHC	EAHC	NIOHC	BSHC	SWPHC	RSAHC
Members/ <i>Membres</i>	19/20	13	10	11	9	8	8/9	8
Core Members <i>Noyau</i>	14/15	7	2	10	4	3	5/6	6
Scenario 1	18	8	8	11	6	4	5	6
Scenario 2	14	13	5	11	7	5	5	6

RHC / CHR	EAtHC	SAIHC	NHC	ARHC	SEPRHC	SWAtHC	USCHC
Members/ <i>Membres</i>	6/7	6	5	5	4	3	2
Core Members <i>Noyau</i>	3/4	3	0	0	3	2	0
Scenario 1	3	3	1	1	4	2	2
Scenario 2	5	3	1	1	3	2	1



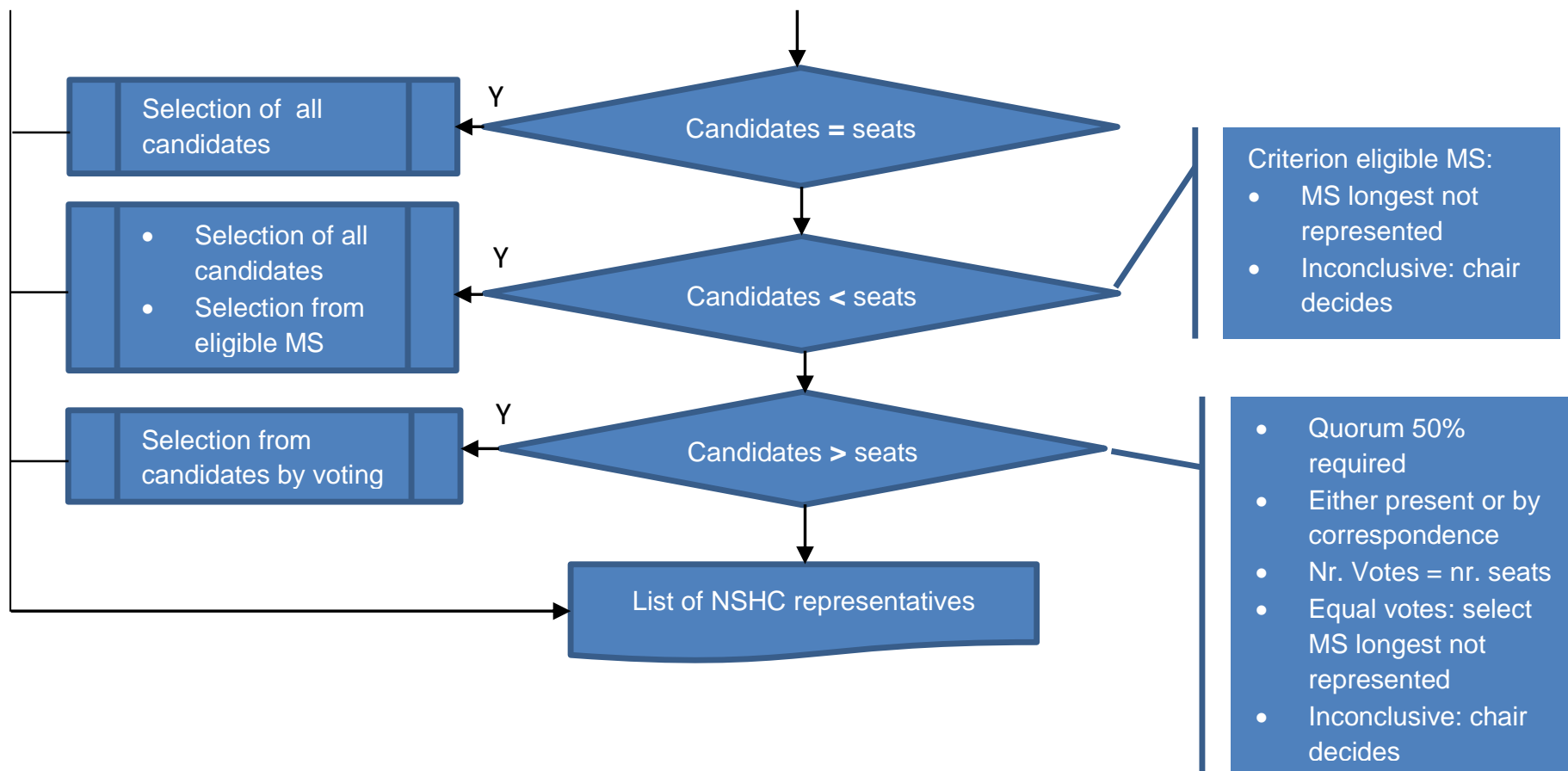


Flow: NSHC MS candidacy



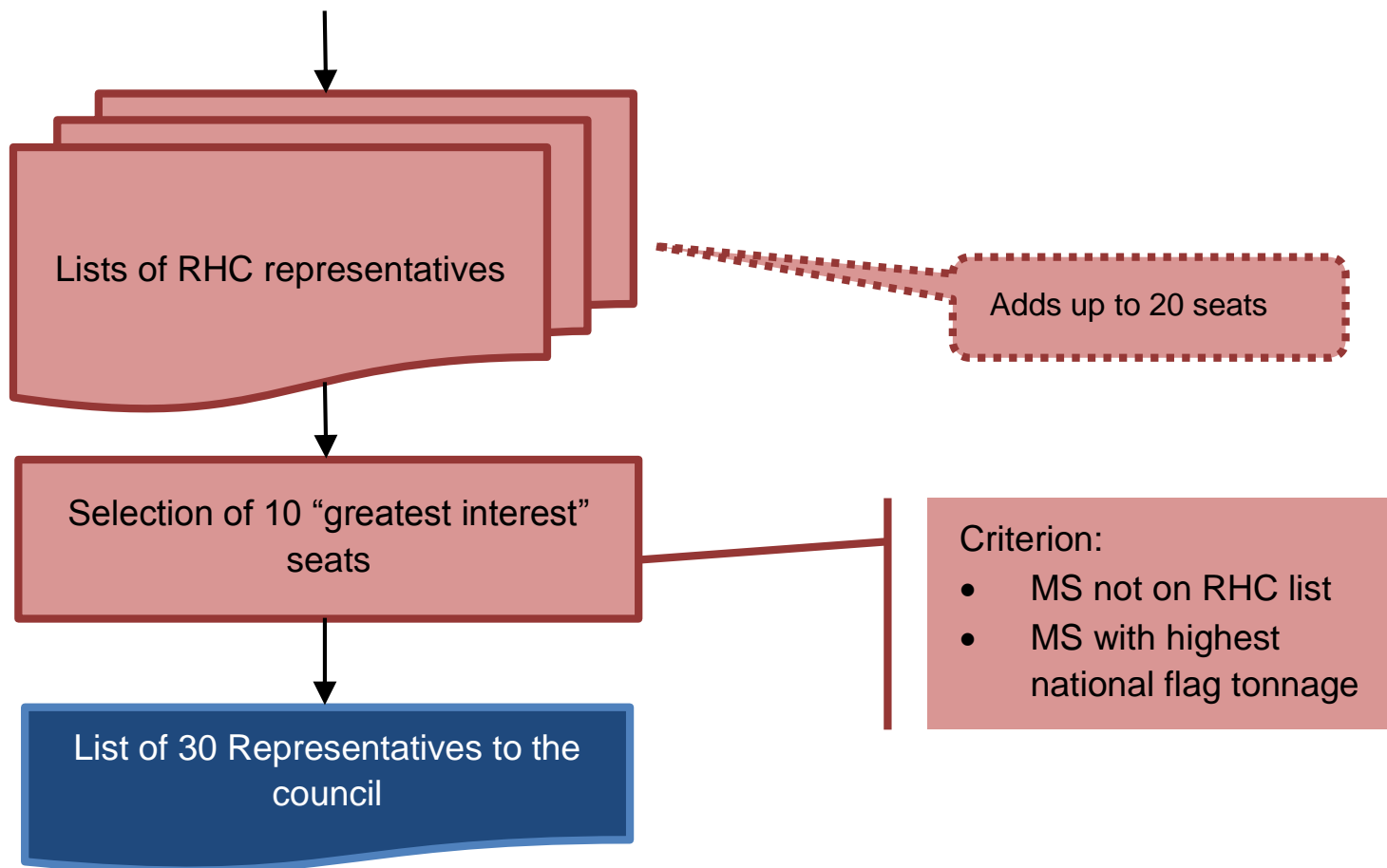


Flow: candidate NSHC MS selection





Flow: MS with greatest Hydrographic interest



Tonnage Table – *Tableau des tonnages*

Member State / <i>Etat membre</i>	Tonnage	Rank/Rang
China	97 570 000	1
(Malta)	(57 700 399)	
Singapore	53 691 448	2
United Kingdom of Great Britain and Northern Ireland	45 360 141	3
Greece	44 190 793	4
Republic of Korea	29 885 000	5
United States of America	23 063 117	6
Cyprus	21 565 917	7
Japan	19 743 023	8
Italy	18 449 142	9
Norway	17 564 236	10
Denmark	11 744 389	11
India	11 113 181	12
Malaysia	10 938 309	13
Germany	10 613 319	14
Russian Federation	10 310 722	15
Indonesia	9 608 479	16
Netherlands	8 671 000	17
Turkey	6 891 750	18
France	6 497 652	19
Iran (Islamic Republic of)	5 500 000	20
Philippines	5 269 721	21





IRCC7/26: Procedure to select representatives to the IHO Council

Issue.

Use of the word “representative”.

- What does representation or even selection by a RHC imply.

Two decision points (NSHC letter 02/206)

- DP1: the wording
- DP2: the meaning



DP1: the wording

Placeholder document

- Placeholder for “Representative of the NSHC” or “Member states selected by the NSHC”
- First wording iaw nomenclature IRRC7 and IHB file S1/6200
 - Used by MBSHC and MACHC
 - But IRRC8: up to regions
- Second wording follows Art 16 of the General Regulations as close as possible

Propose second wording

- Not all MS are comfortable first wording
- Second wording is more neutral



DP2: the meaning (1)

Spectrum

MS take into account certain findings of the region or of its member states



MS are fully autonomous

Former takes into account that MS are elected by a group of MS and that Council seats are allocated on a regional basis.

Latter only regards elected MS as MS of the IHO.



DP2: the meaning (2)

Proposal with regional aspect

“In carrying out their role as a [representative of the NSHC to] [Member State selected by the NSHC for] the Council, the elected Member States shall take into account the views of the Member States of the Commission. A standing agenda item during the NSHC Conferences will cover IHO Council matters”



DP2: the meaning (3)

Proposal without regional aspect

“In carrying out their role as a [representative of the NSHC to] [Member State selected by the NSHC for] the Council, the elected Member States acts autonomous as a IHO member state”.

**If NSHC decides for this option:
WHY VOTE ???**



Selection of candidate MS by Voting

- A quorum is set at 50% of MS casting their vote. Selection is by simple majority
- If no quorum is achieved, the voting window is extended for 2 weeks and the missing MS are invited to vote
- If still no quorum has been achieved, the chair selects candidate based on votes cast
 - In case of a draw the candidate longest not selected is selected
 - If inconclusive the chair will designate a candidate