

NSHC WORKING GROUPS

North Sea International Charting Co-ordination Working Group

Report by the Chairman (Andrew Hinton) June 2016

Background

1. The North Sea International Chart Committee (NSICC) devised the original scheme of International Charts of the North Sea. Details were set out as Appendix F to the NSICC Report to the XIth International Hydrographic Conference (1977)
2. After discontinuation of the NSICC in 1983 the North Sea International Chart Sub-Committee (NSICSC) succeeded this group (Conclusion 43 of the 14th NSHC Conference).
3. The NSICSC, in turn, was disbanded in 1988 (Conclusion 52 of the 17th NSHC-Conference), but an Ad-Hoc Working Group on INT Charts was established at the same meeting (Conclusion 53)
4. In 1989 (18th NSHC Conf.) the Ad-Hoc group was replaced by the NSHC INT Chart Scheming Group (Conclusion 56); the Chairman was provided by the Netherlands.
5. During the 20th NSHC Conference it was concluded to change the name into North-West European Charting Group (Region D) because the charts covered a larger area than the North Sea.
6. The Netherlands provided the Chairman/Coordinator, Hans Ferwerda, for the North-West European Charting Group (Region D) until June 2004. The United Kingdom has provided the Chairman since then.
7. At the NSHC 29th Conference in September 2010 (Conclusion 85), the NSHC Members agreed to change the name of the NW European Charting WG to the North Sea International Charting Co-ordination Working Group. The NSHC 29th Conference also established the North Sea ENC Harmonization Working Group which reported for the first time at the 30th Conference.
8. Andrew Hinton took over from Tim Wellington as Chairman on the latter's retirement in 2014.

Overview of INT AREA D: Charting.



INT CHARTS IN REGION

Overview	18	Harbour	108
General	12	Berthing	32
Coastal	63	Total	282 (this includes all panels).
Approach	49		

9. Region D has a mature INT chart scheme compared to other INT Regions. There are 216 full INT charts in the region, all have been produced and published.

10. There has been no requirement for Members to meet for many years as the scheme is mature and all matters can be dealt with by correspondence. The Chairman has been performing the role as the Coordinator.

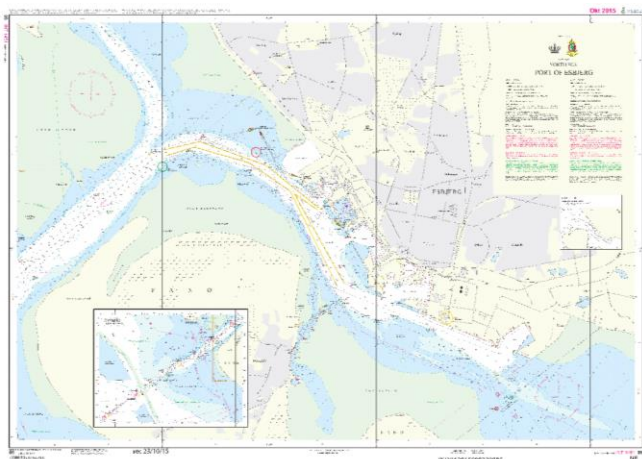
Changes/Progress with the INT Charts of Region D since the previous NSHC meeting.

11. Changes to the INT chart scheme in Area D are few in number. Those that are received are generally intended to improve INT Chart coverage locally as a result of new port developments or new routes and channels.

12. Since 2014 there have been some significant proposals – three examples from Denmark, Netherlands / Belgium and Norway are given below.

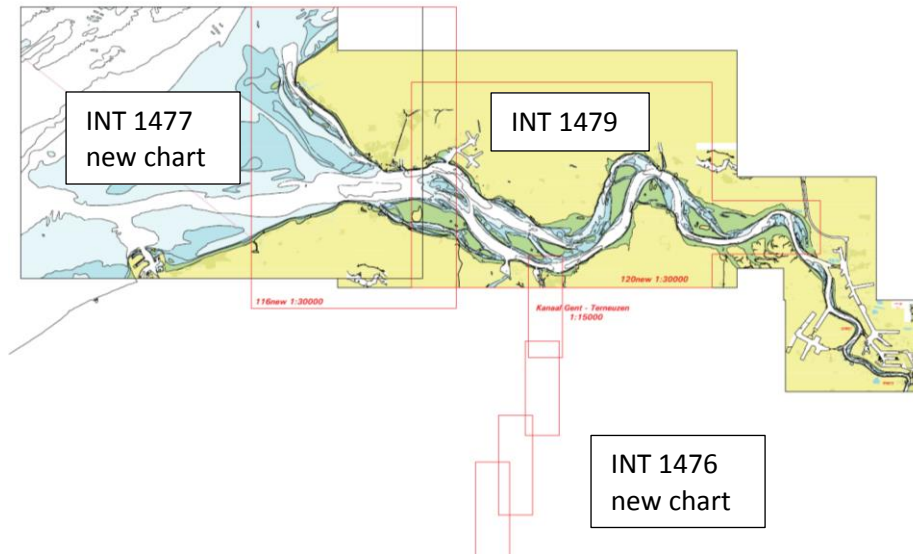
Denmark.

Changes to the INT chart scheme covering the port of Esbjerg have been approved and published. INT 1451 is now at a scale of 1:12,500 with an inset plan of the approaches at 1:50,000.



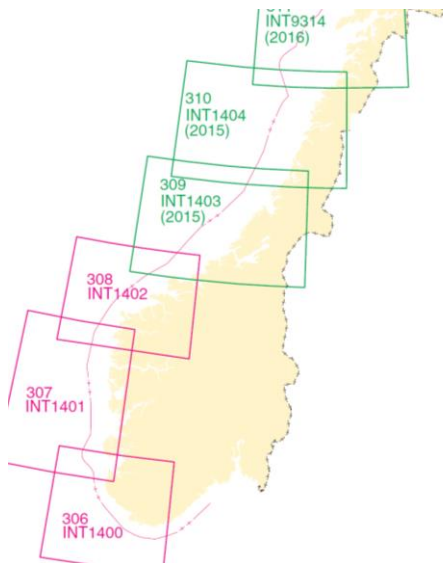
Netherlands/ Belgium

A joint submission was proposed to improve the INT charting in the Westerschelde. 3 INT charts affected INT 1476 (114), 1477 (116) and 1479 (120) – INT 1476 and 1477 are new INT charts. All three charts should be published this financial year.



Norway.

New changes approved and published affecting medium scale INT coverage along the Norwegian coast at 1:350,000. INT 1403 and 1404 are new INT charts extending 350,000 coverage up to border of Area N. Published 12th November 2015. There have also been modifications to the limits of 1400 – 30th March 2016, 1401 - 2015 - NE and 1402 – 13th April 2016. Further work is currently underway to resolve a gap in coverage that has opened up between INT1400 and INT1300 to the east.



Other significant developments have seen Germany relinquish Printer Nation status for charts outside their waters and there have been proposals to amend INT coverage in Plymouth in light of the UKHO's new small scale chart generalisation policy. Discussions are also currently under way between Norway and UK regarding Producer Nation status for small scale INT Chart 140.

Revised management review and monitoring of INT charts (IHO CL64/15 and 89/15 refer)

13. In 2015 IHO CLs 64/15 and 89/15 detailed the new procedures for the management review and monitoring of INT charts. This followed on from a proposal for more practical revised arrangements by the IHB at IRCC-7. These new processes were subsequently discussed at the ICCWG Meeting in Monaco in April 2016.

14. The main elements of the new process are as follows:

- All new INT Charts to be submitted to Regional INT Chart Coordinator (ICCWG) for review.
- INT Chart Coordinator (ICCWG) to verify chart's compliance with IHO standards and to provide feedback to the Producer Nation.
- Modernisation of IHO Publication S-11 Part B by implementation of the new INT Chart web catalogue (INToGIS). The responsibility for updating the INToGIS system for chart updates now lies with member states rather than the INT Chart Coordinator.

15. The new processes and procedures will take time to bed in and there are certain issues that require further discussion. It is hoped working procedures will be produced by the IHO soon to assist member states.

16. The Chairman contacted Members of Region D in May 2016 requesting catalogue updates be made by members to the new INToGIS system. This process is still ongoing and it is hoped to be completed soon after NSHC 32.

Andrew Hinton
INT Area D Chart Coordinator
June 6th 2016.