

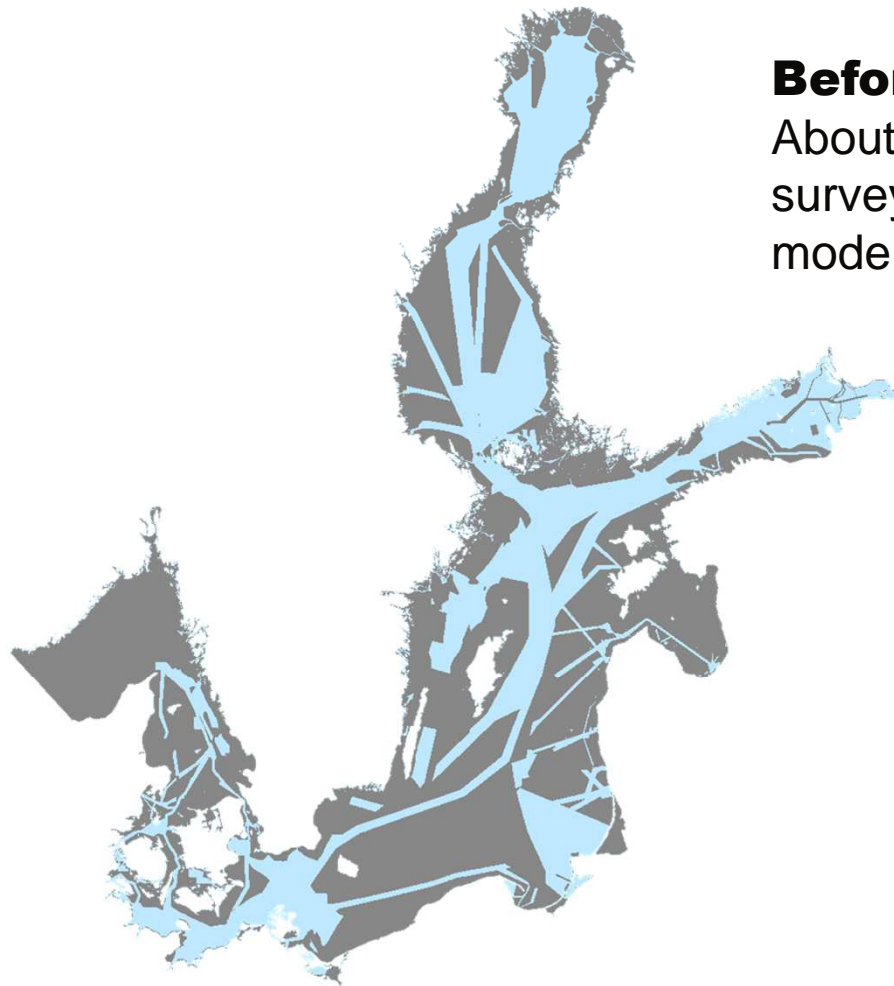
The logo graphic for FAMOS consists of several curved, overlapping lines in shades of blue and green, resembling a stylized wave or a compass rose.

FAMOS

FINALISING SURVEYS FOR THE BALTIC MOTORWAYS OF THE SEA

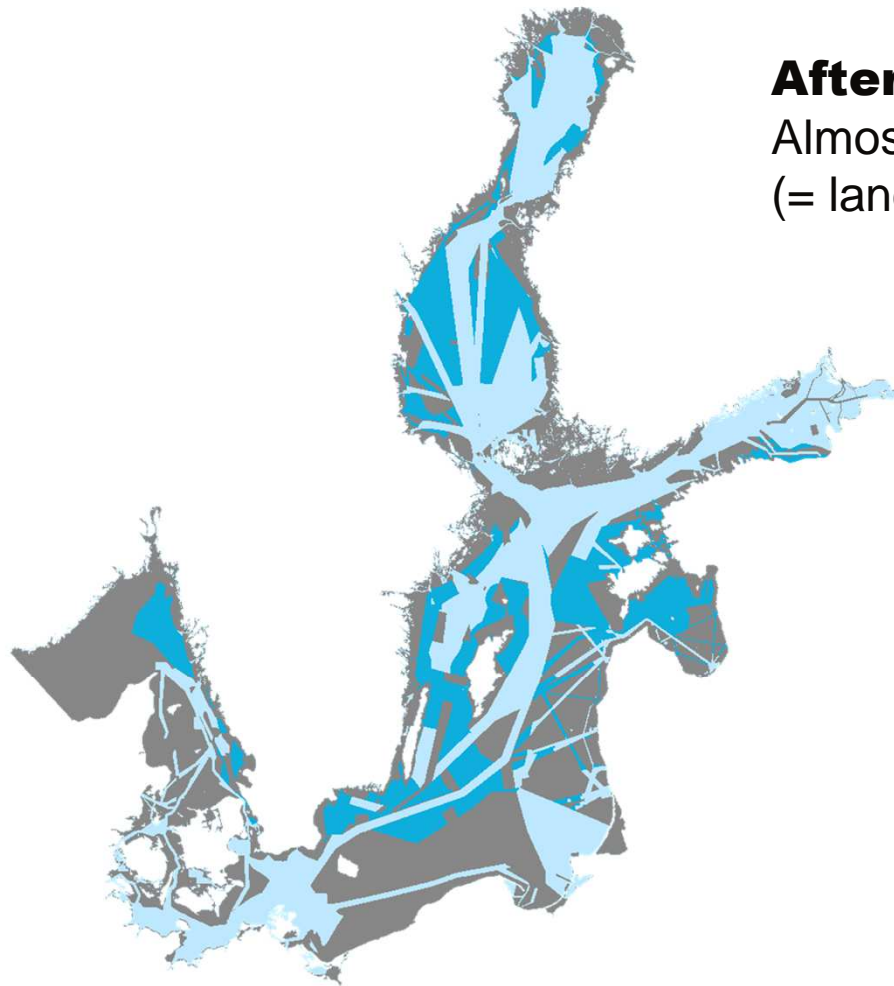


Co-financed by the European Union
Connecting Europe Facility



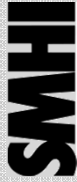
Before FAMOS:

About 50%
surveyed to
modern standards

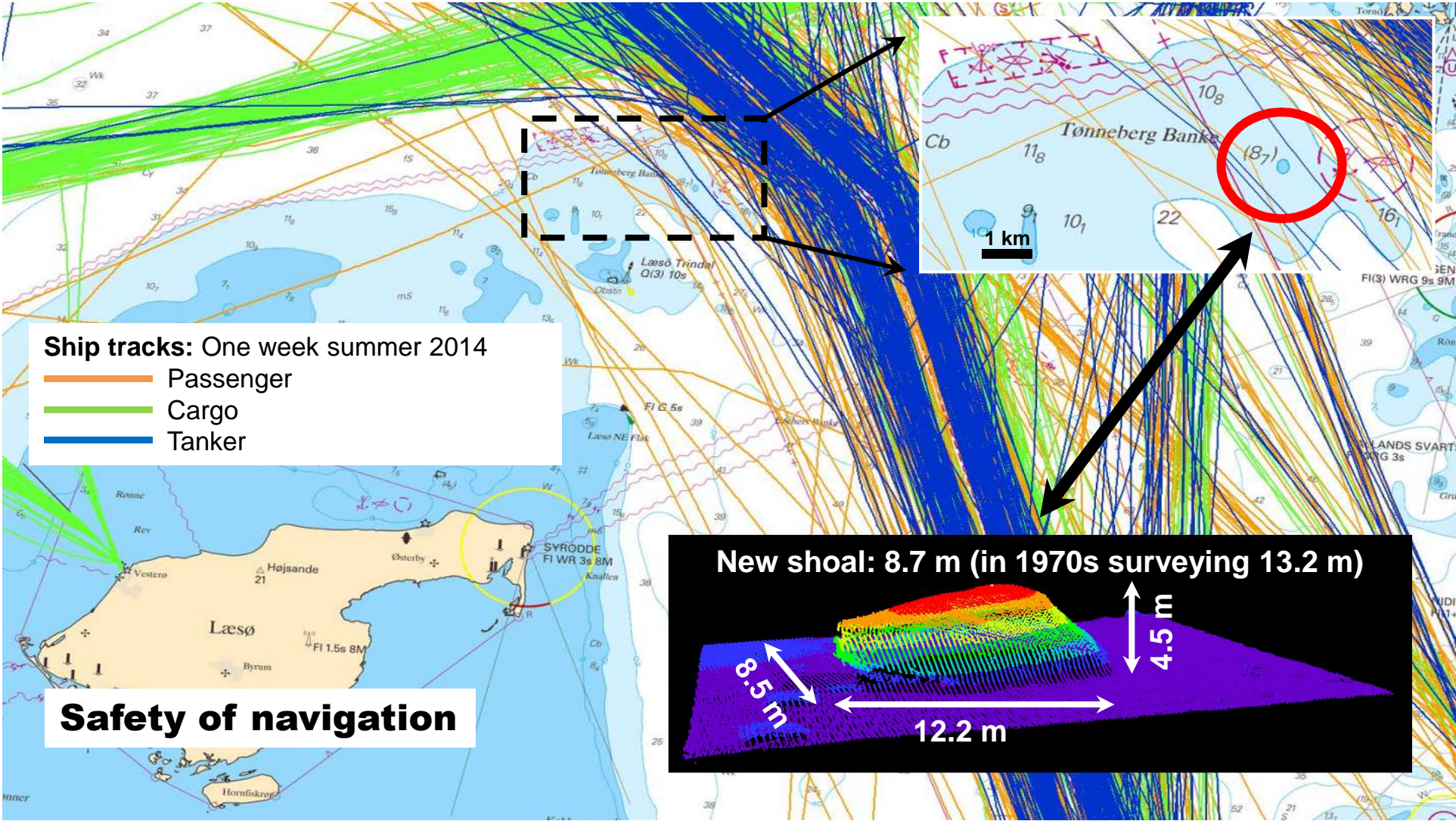


After FAMOS:

Almost 100 000 km² more
(= land area of Portugal)



Co-financed by the European Union
Connecting Europe Facility

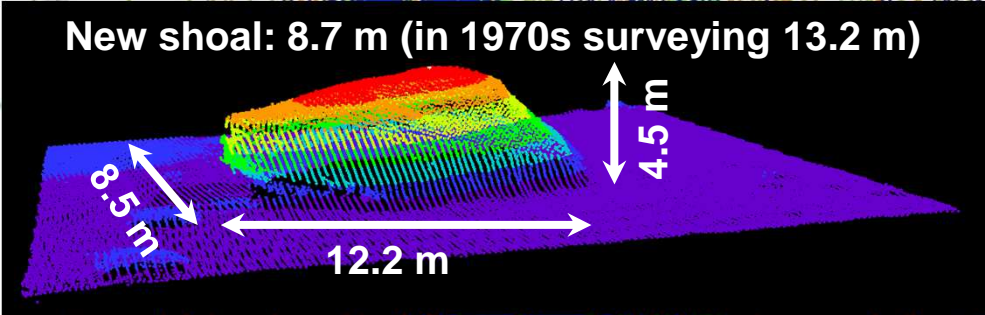


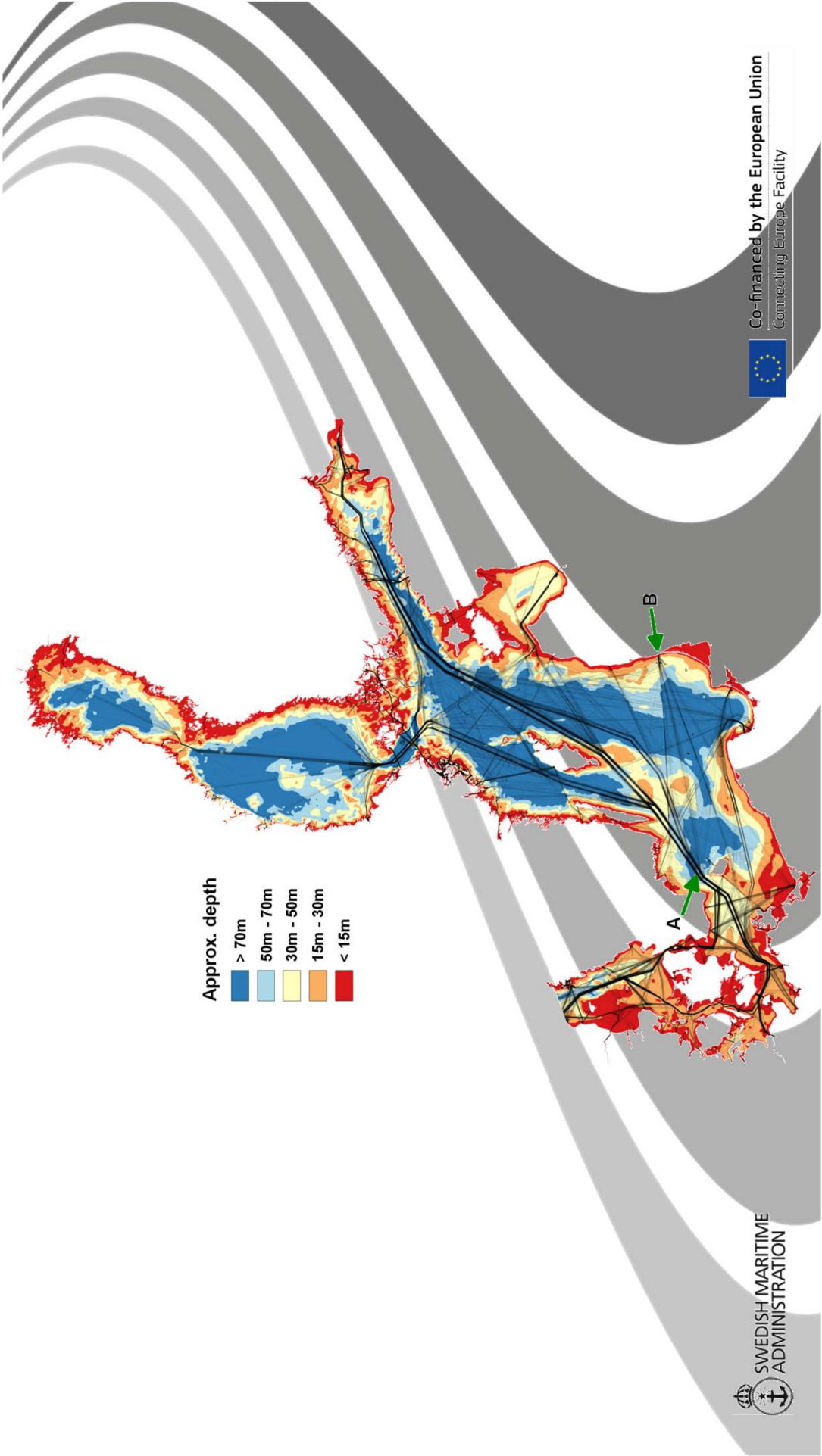
Ship tracks: One week summer 2014

- Passenger
- Cargo
- Tanker

Safety of navigation

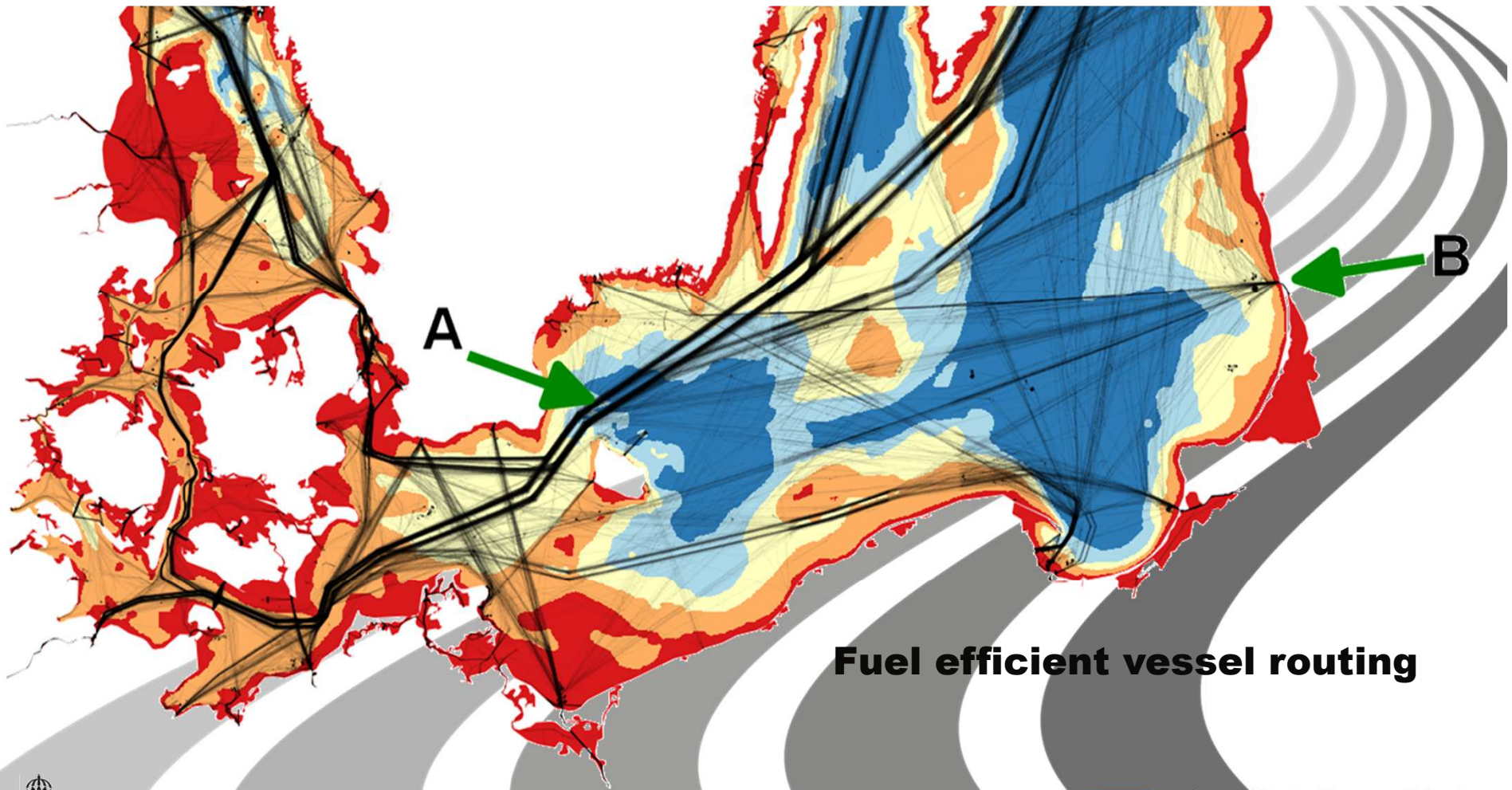
New shoal: 8.7 m (in 1970s surveying 13.2 m)



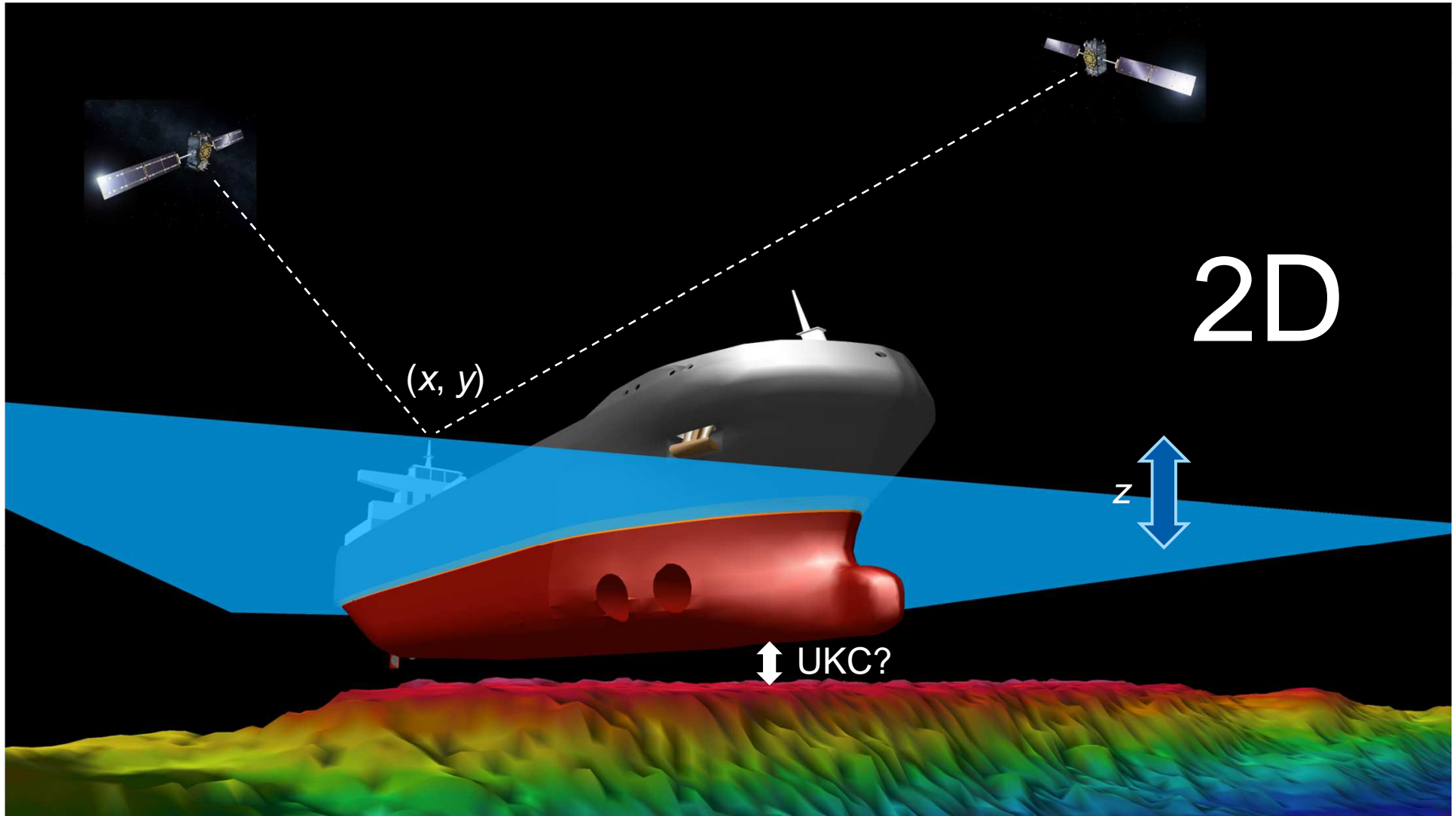


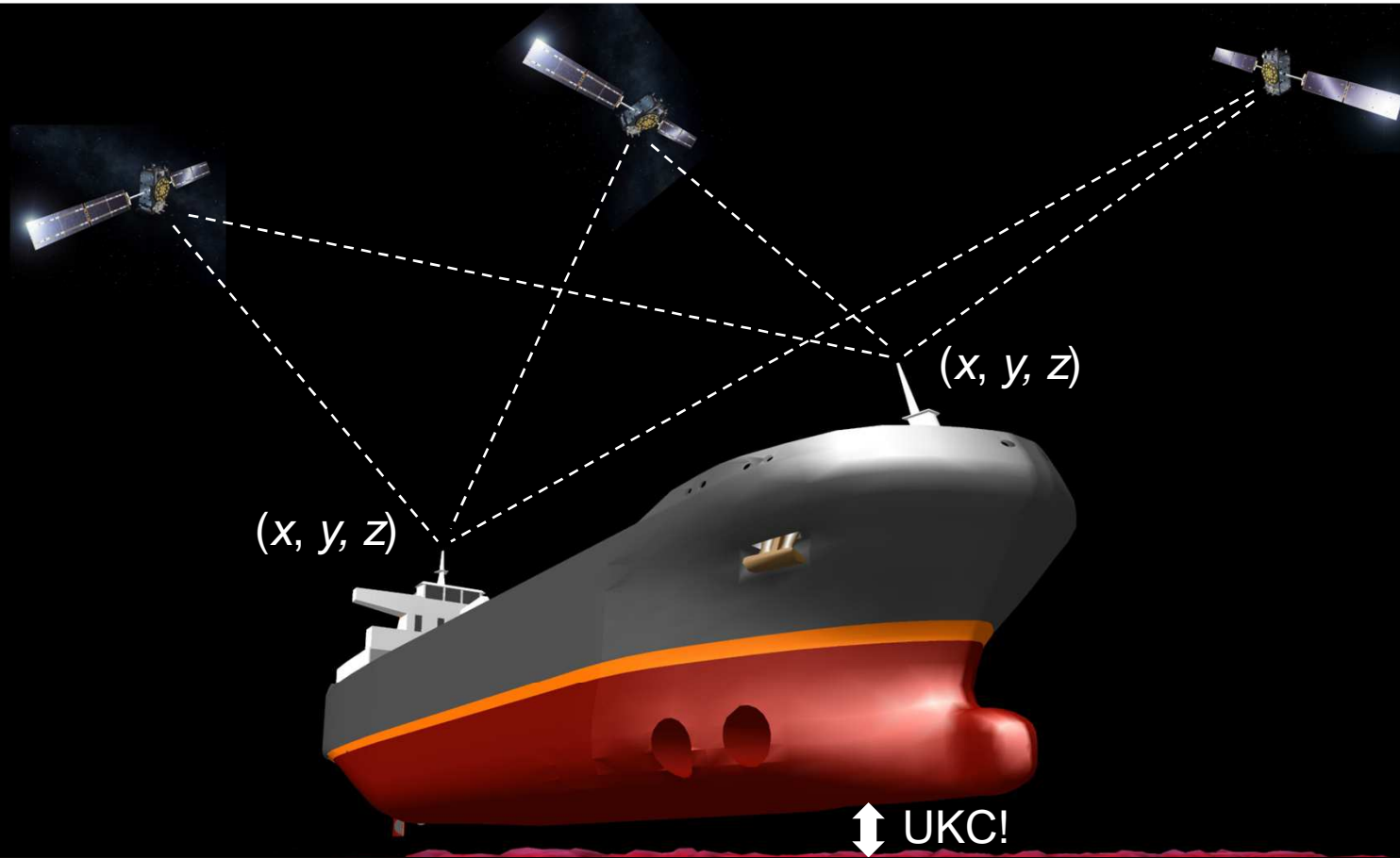
Approx. depth

- > 70m
- 50m - 70m
- 30m - 50m
- 15m - 30m
- < 15m



Fuel efficient vessel routing





3D

“Under Keel Clearance aware navigation”



+ 10 cm draft → + 20 kUSD profit
(per port call)

assuming typical Aframax tanker, 3 USD profit per barrel

Hydrographic surveys

- Surveying 96 600 km², 22% of Baltic Sea and 95% of remaining area relevant for shipping (BSHC-HELCOM CAT I & II)
- Approaching HELCOM CAT I/II goal in Sweden, Finland, Latvia, Estonia, Lithuania and Denmark

Improving vessel navigation

- Goal: Better define chart zero by measuring the shape of the earth
- Goal: Improve GNSS positioning
- Motivation: Contribute to future satellite navigation capabilities, e.g. navigation in full 3D and make life easier for mariners

Project activities

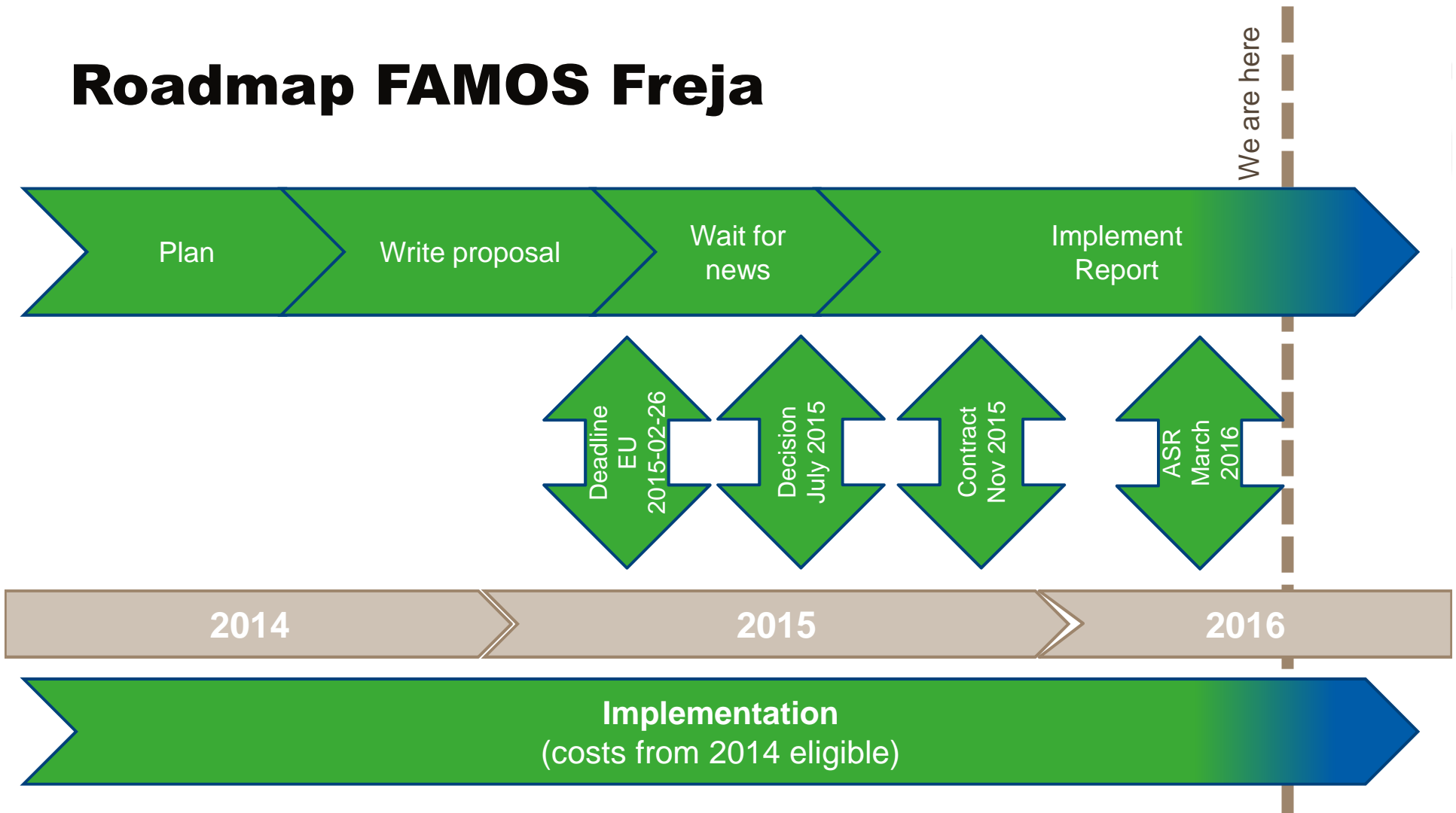
Surveying infrastructure

- Investments needed to efficiently perform hydrographic surveys
- Smaller survey boats and equipment upgrades in the Baltic Countries
- S/V Varuna upgrade in Lithuania

Data flow sounding to chart

- Improvements of data workflow from sounding to chart
- Upgrades of chart production systems and international harmonisation towards future nautical products and standards

Roadmap FAMOS Freja



Roadmap FAMOS Odin

