

NSHC32 - Dublin



Increase Bathymetric Contour Lines

Agenda

- 🌐 Who are we?
- 🌐 Increase Bathymetric Contour Lines
 - Status Quo
 - Technical Possibilities
 - Advantages
- 🌐 Q&A





Who are we?

- 🌐 **Founded: 1992**
- 🌐 **Employees: 80+**
- 🌐 **Locations: 3**

 **made**
 **in**
 **Germany**

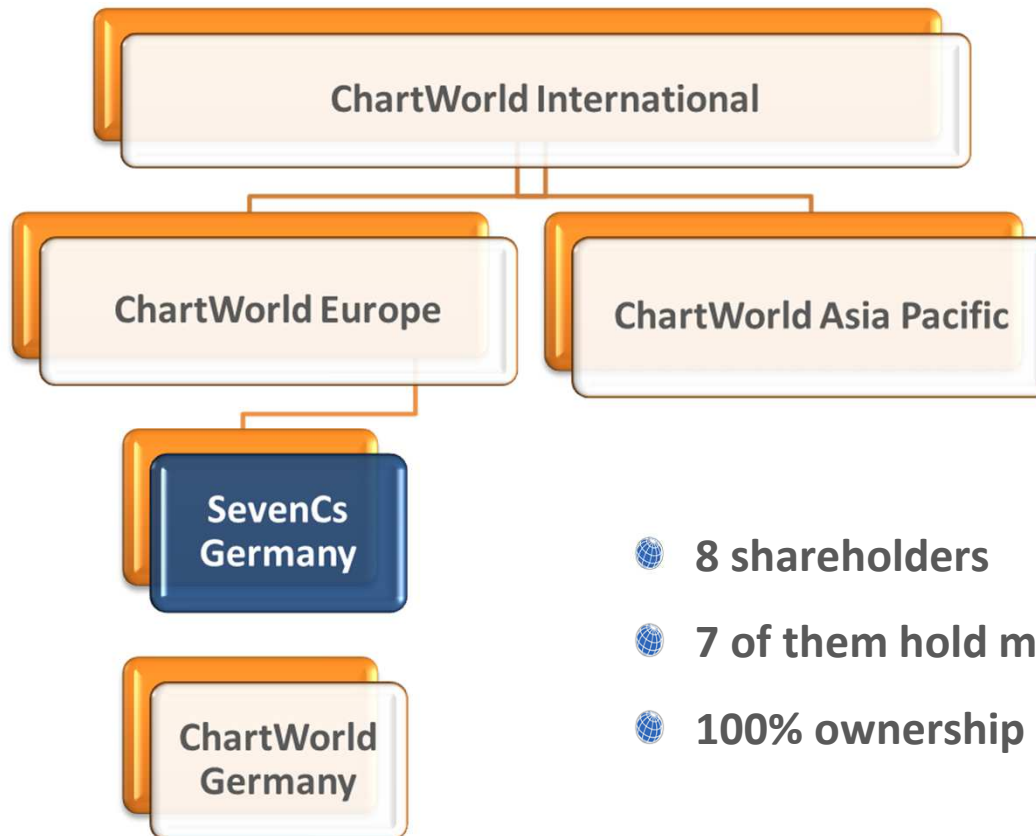


- 🌐 **Creator of the ENC Standard S-52 & S-57**
- 🌐 **Member of IHO working groups (20+ years)**
- 🌐 **Member of Inland ENC Harmonization Groups & CIRM**



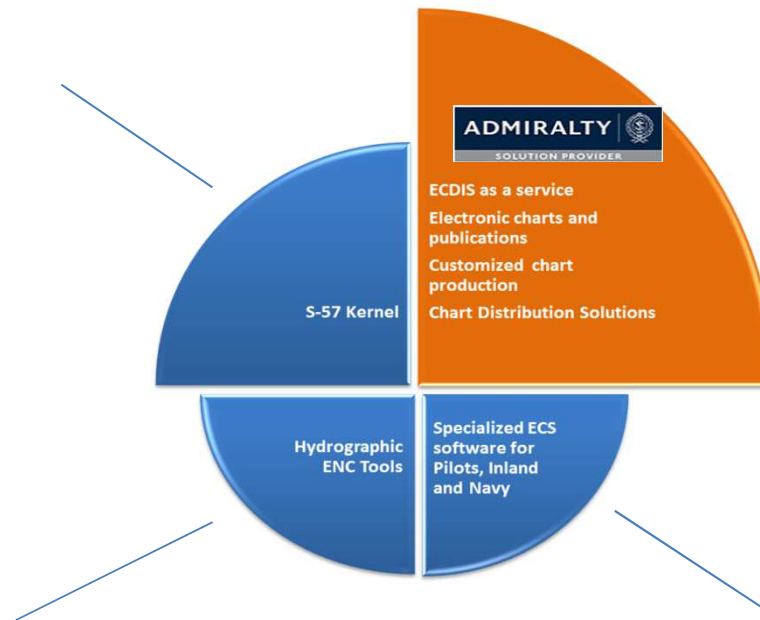
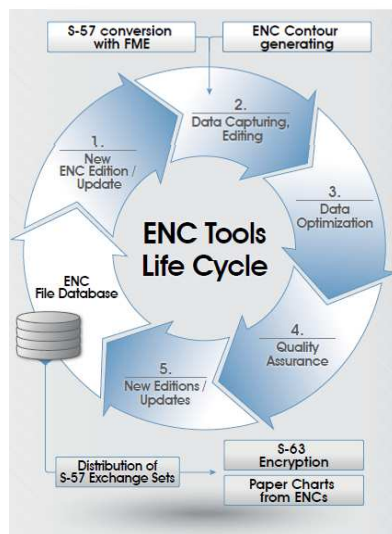
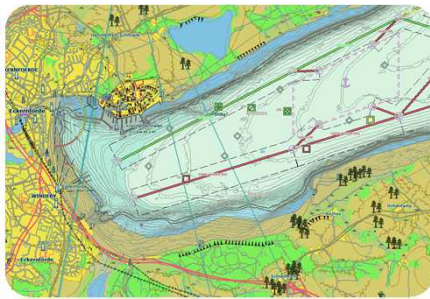


Who are we?



- 🌐 8 shareholders
- 🌐 7 of them hold more than 90%
- 🌐 100% ownership of daughter companies

Who are we?



Who are we?



- 🌐 Shipping companies
- 🌐 Hydrographic offices
- 🌐 OEM (ECDIS, WECDIS, VTS etc.)
- 🌐 Pilot Associations
- 🌐 Defence companies
- 🌐 etc.





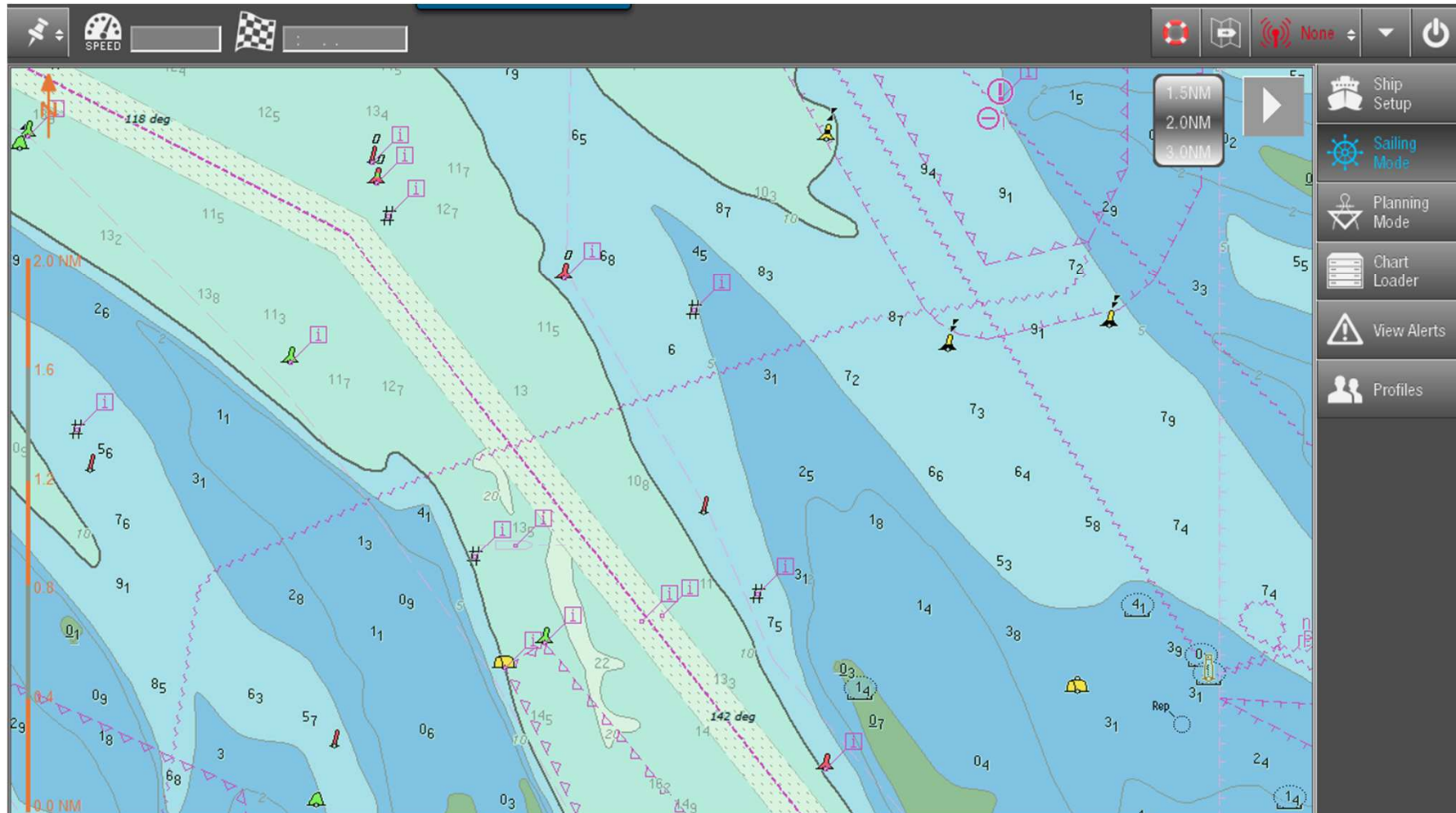
Main Topic

Status Quo:

- 🌐 **Common pattern: 2m, 5m, 10m, 20m etc.**
- 🌐 **High manual interaction**
- 🌐 **Long paper chart production**
- 🌐 **Smaller navigational areas**
- 🌐 **Loosing time & money**

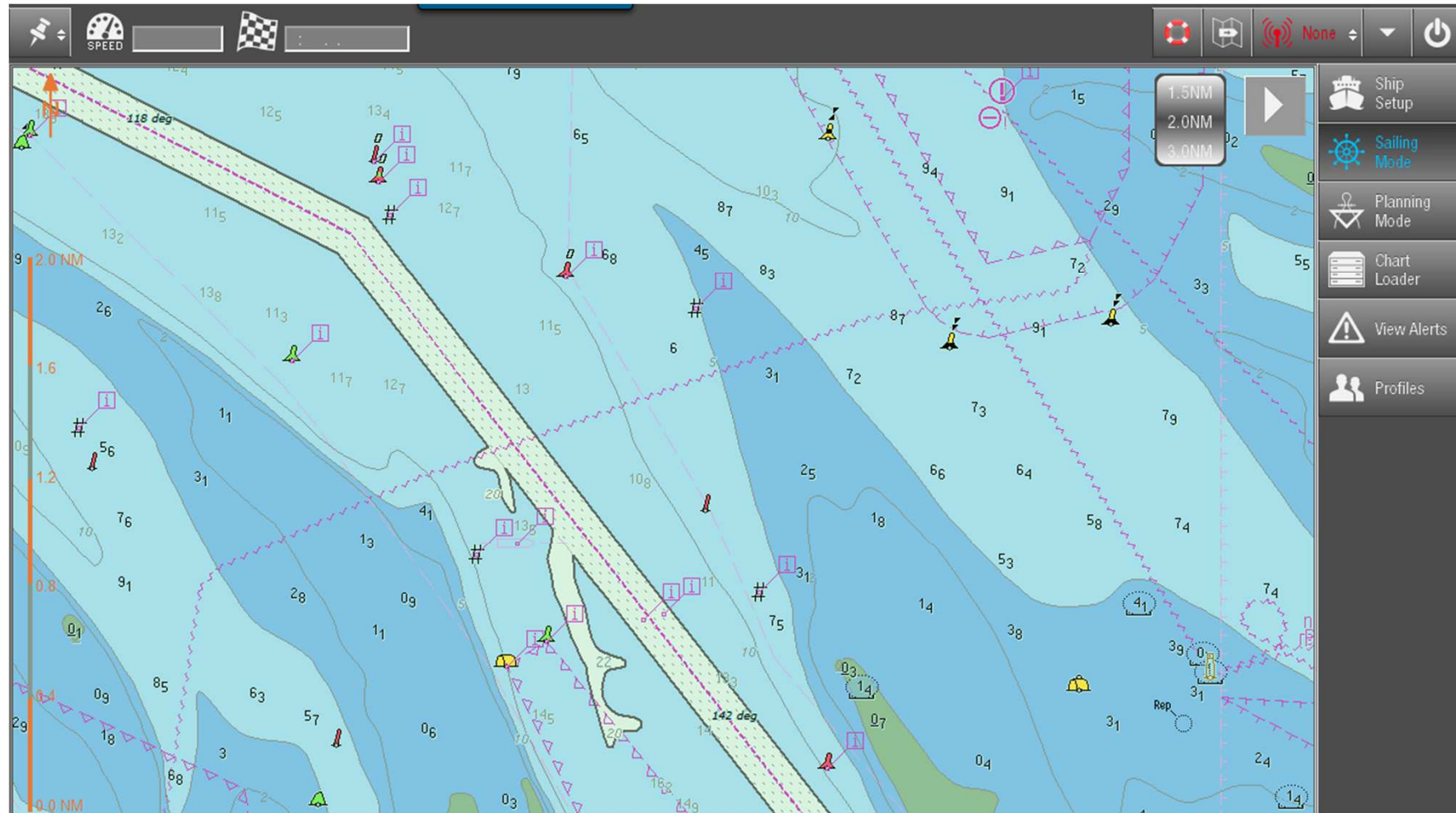
Main Topic

Safety Contour = 10m, common



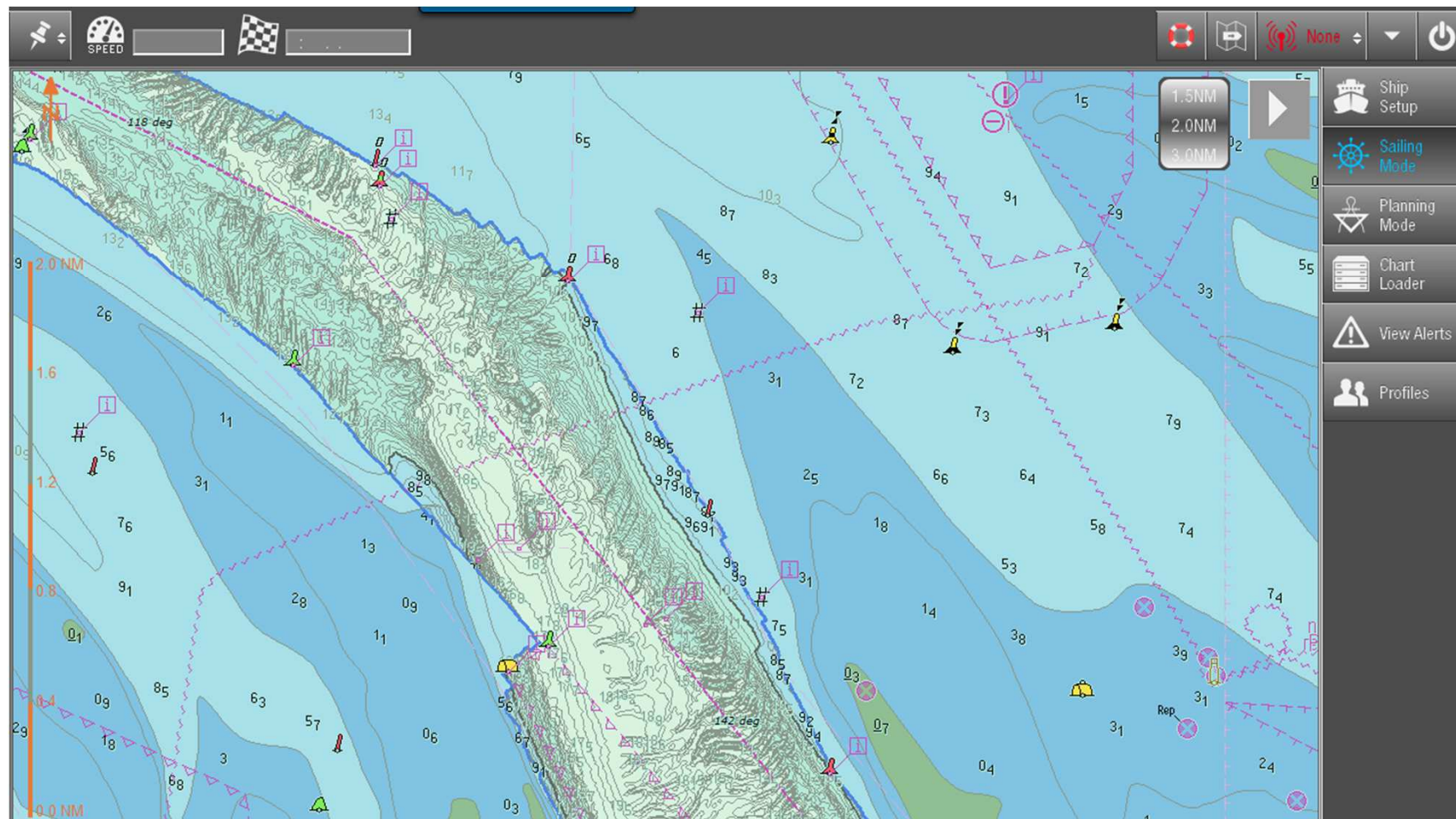
Main Topic

Safety Contour = 10.1m, common

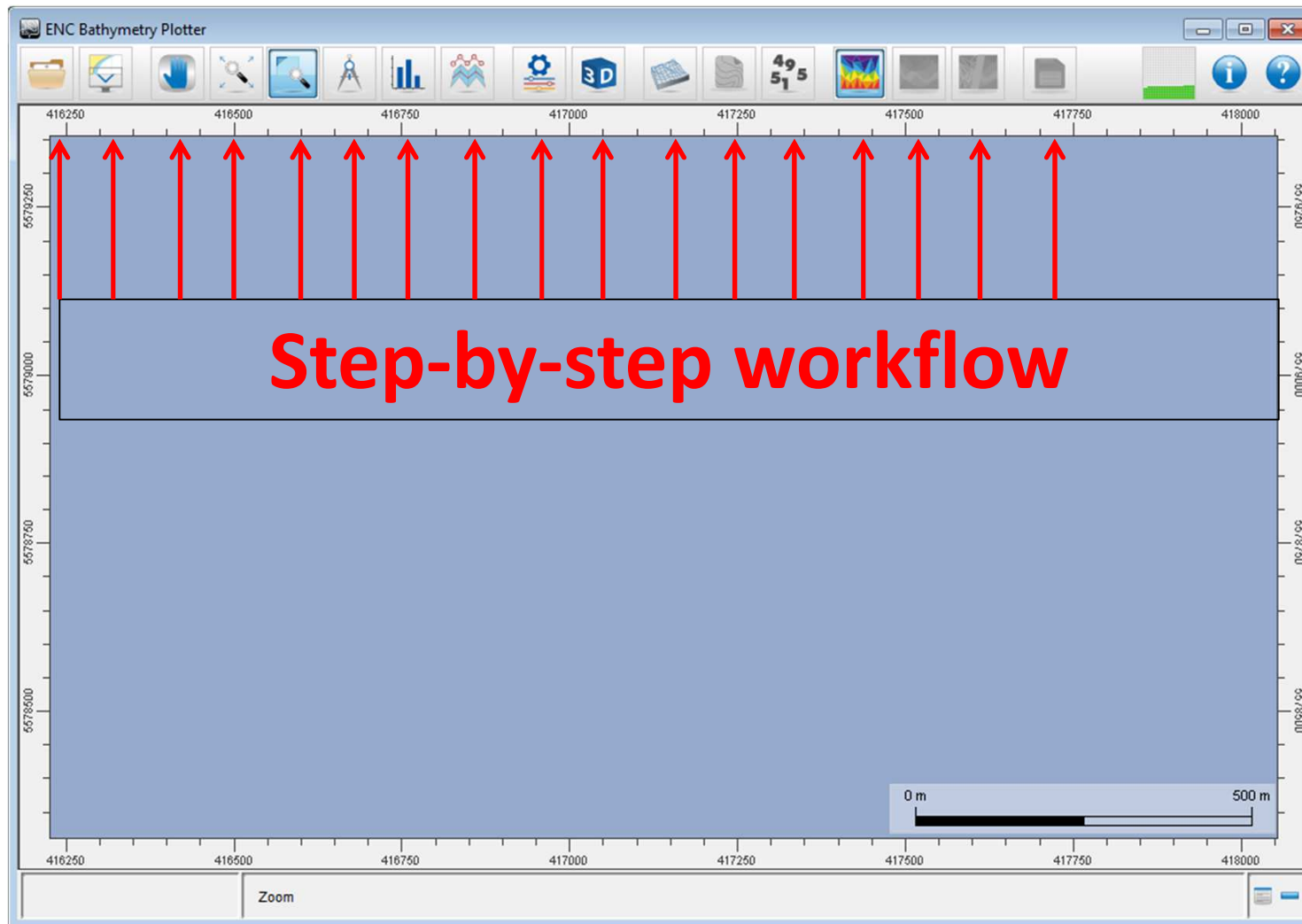


Main Topic

Safety Contour = 10.1m, dense

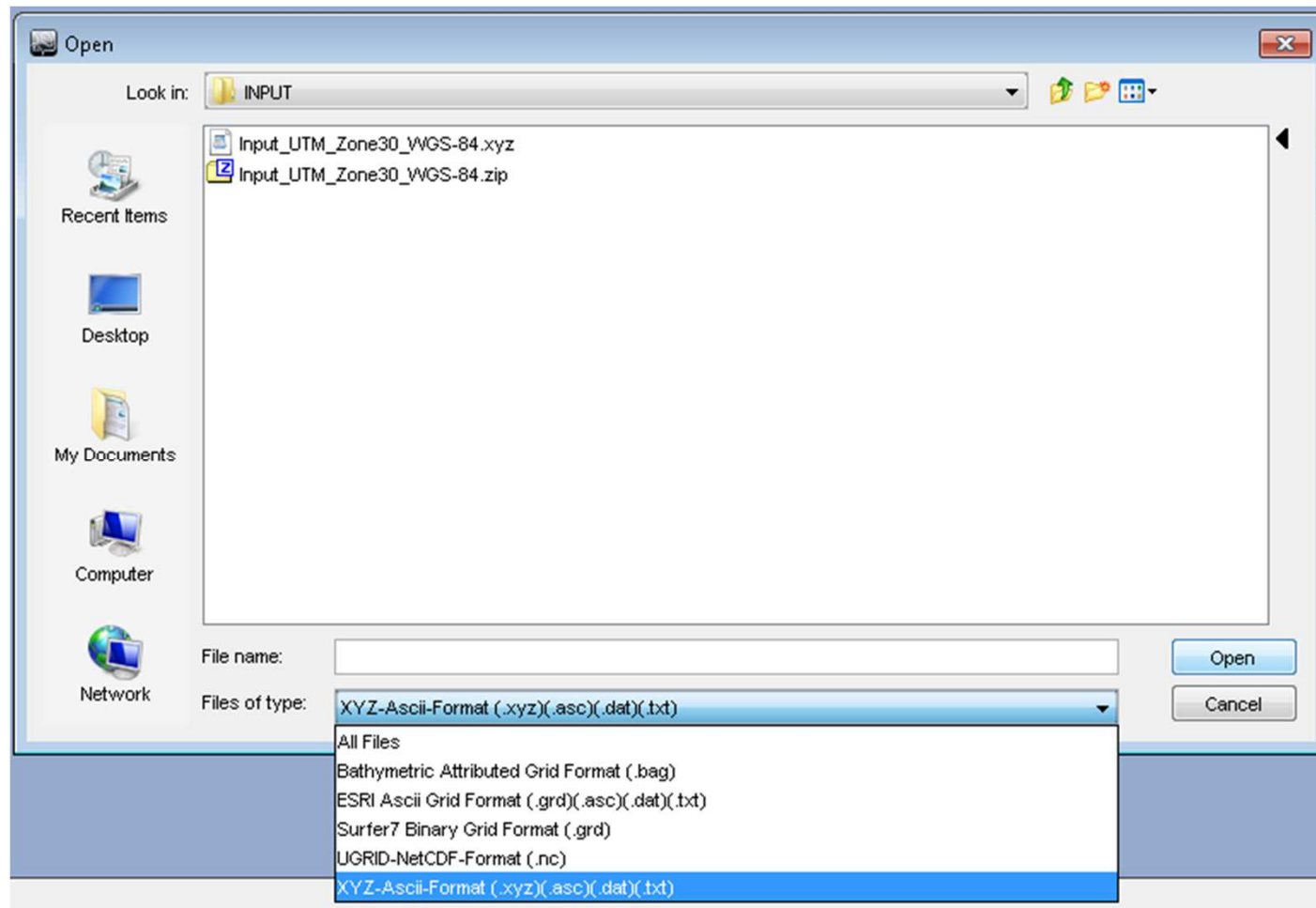


Main Topic



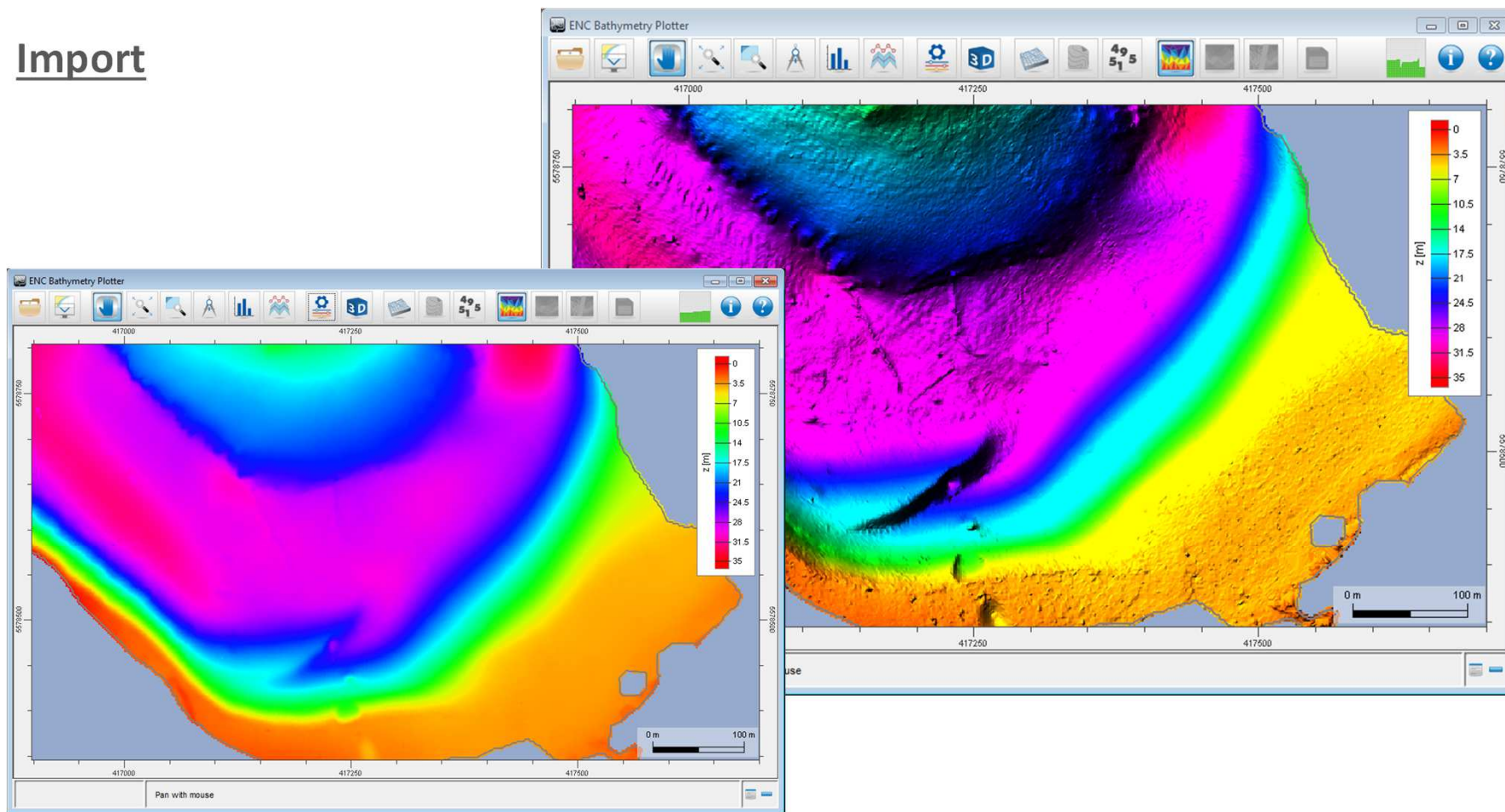
Main Topic

Import



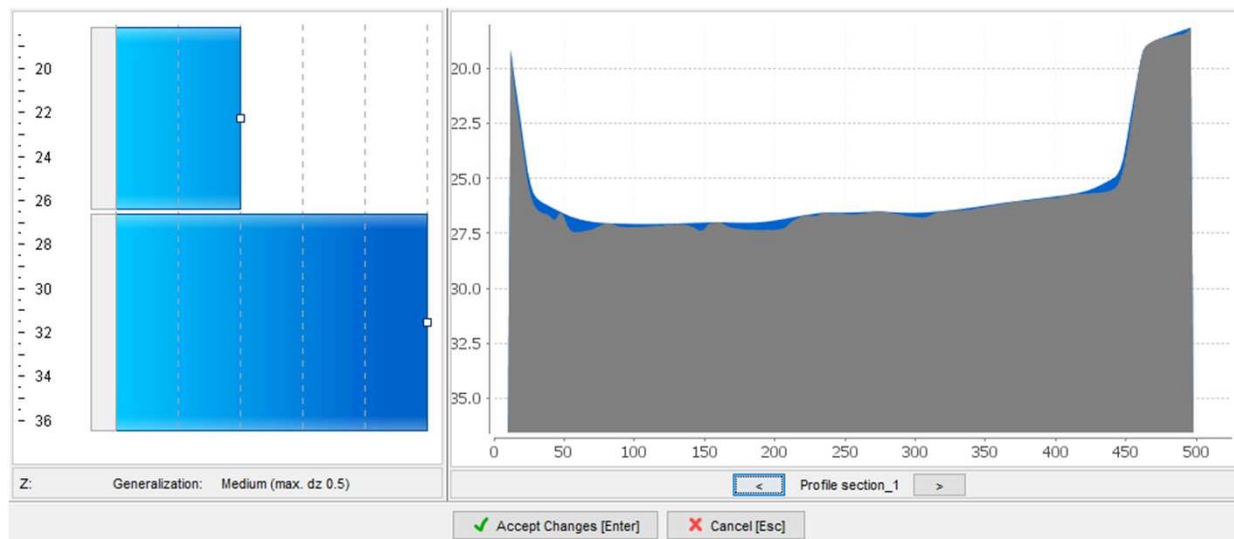
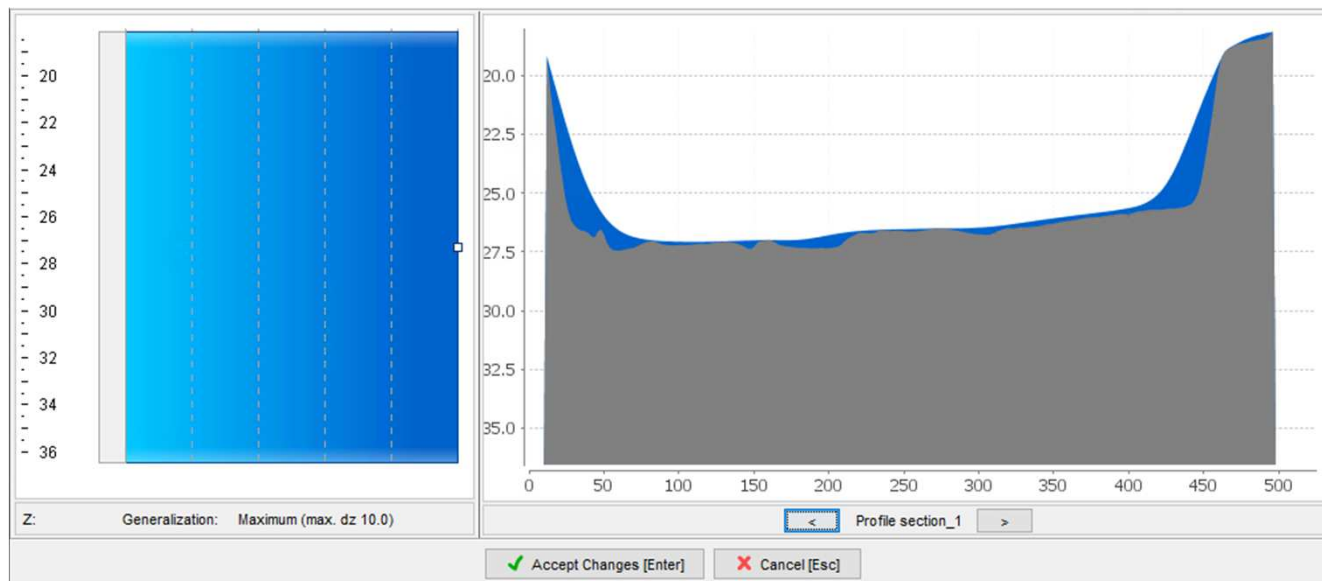
Main Topic

Import



Main Topic

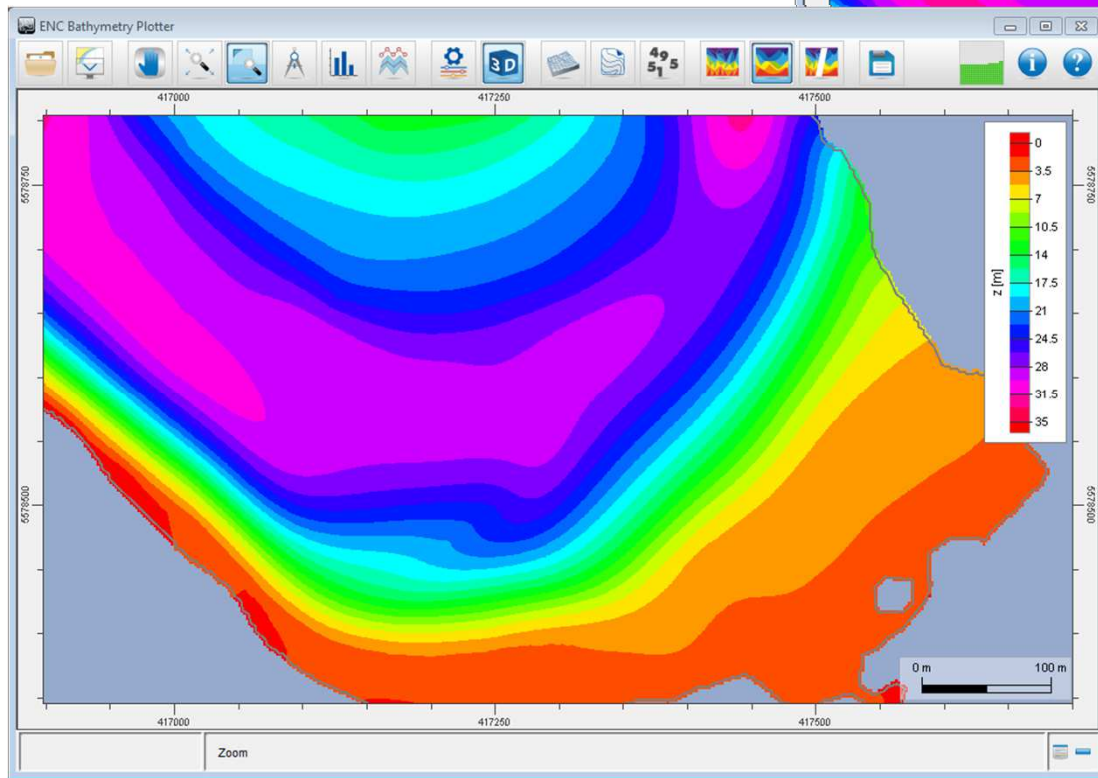
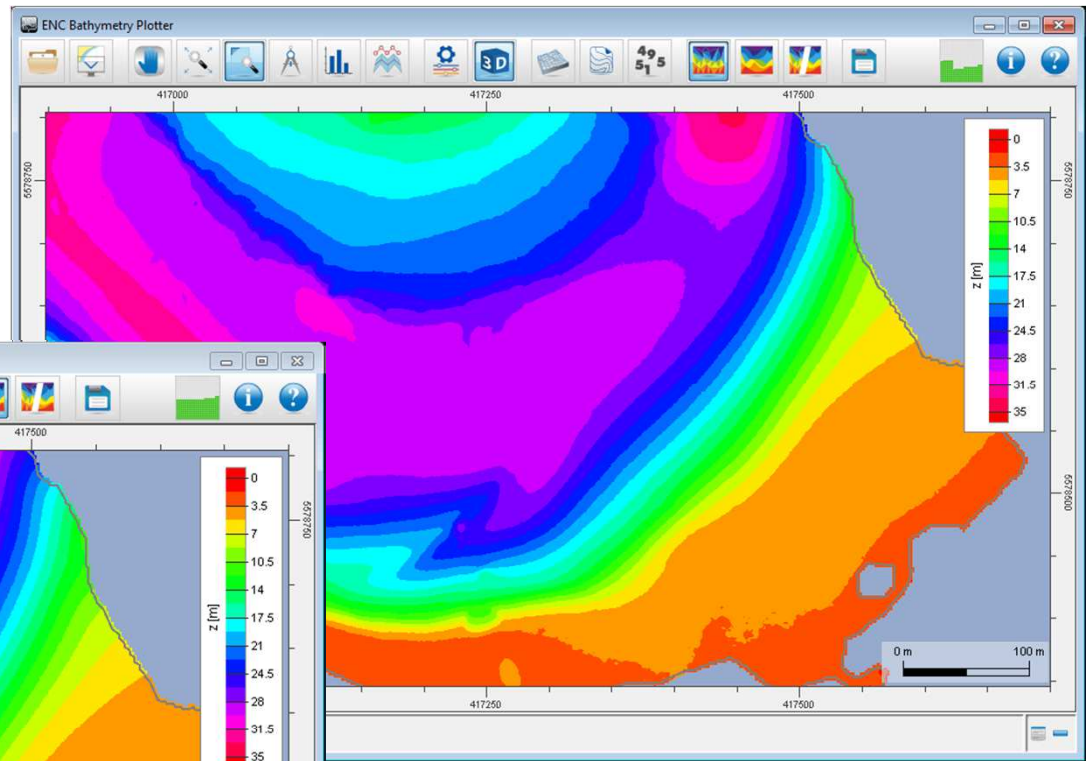
Generalization



**Always to the
safe side!**

Main Topic

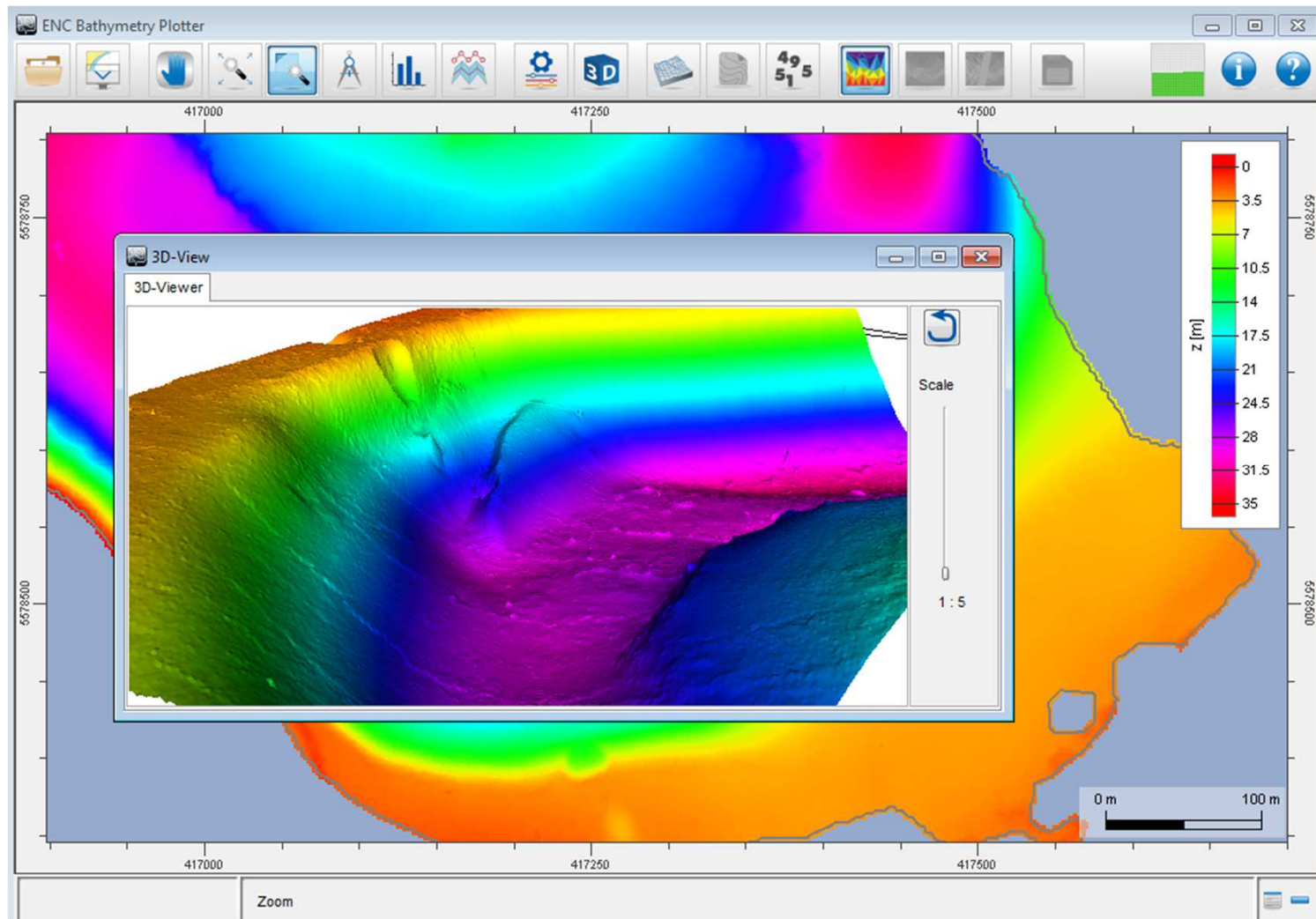
Nautical Model



Source Data

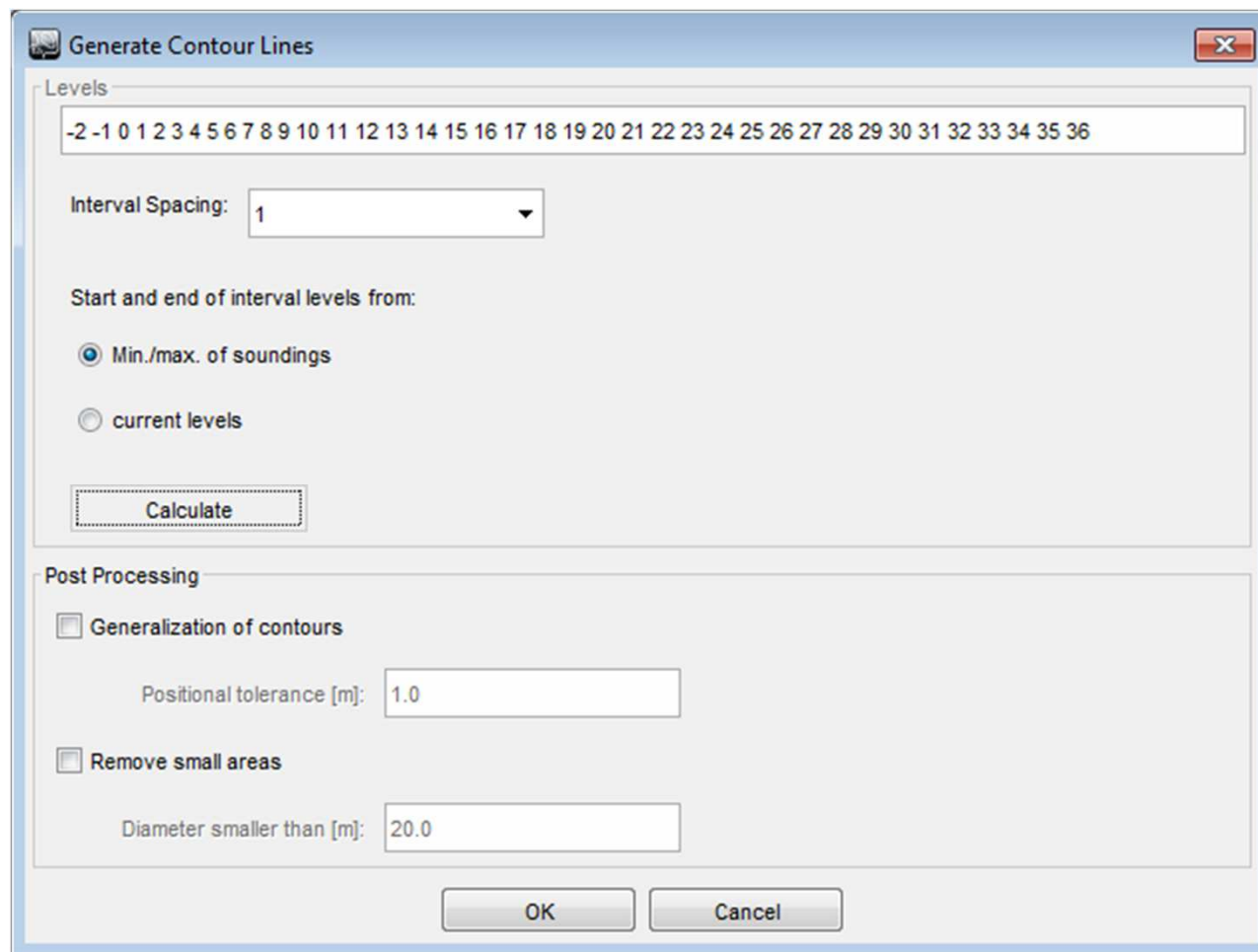
Main Topic

3D View



Main Topic

Set Contour Lines



The screenshot shows a dialog box titled "Generate Contour Lines" with a close button (X) in the top right corner. The dialog is divided into two main sections: "Levels" and "Post Processing".

Levels Section:

- A text box contains the sequence of levels: -2 -1 0 1 2 3 4 5 6 7 8 9 10 11 12 13 14 15 16 17 18 19 20 21 22 23 24 25 26 27 28 29 30 31 32 33 34 35 36.
- "Interval Spacing:" is set to 1, with a dropdown arrow.
- "Start and end of interval levels from:" has two radio button options:
 - Min./max. of soundings
 - current levels
- A "Calculate" button is located at the bottom of this section.

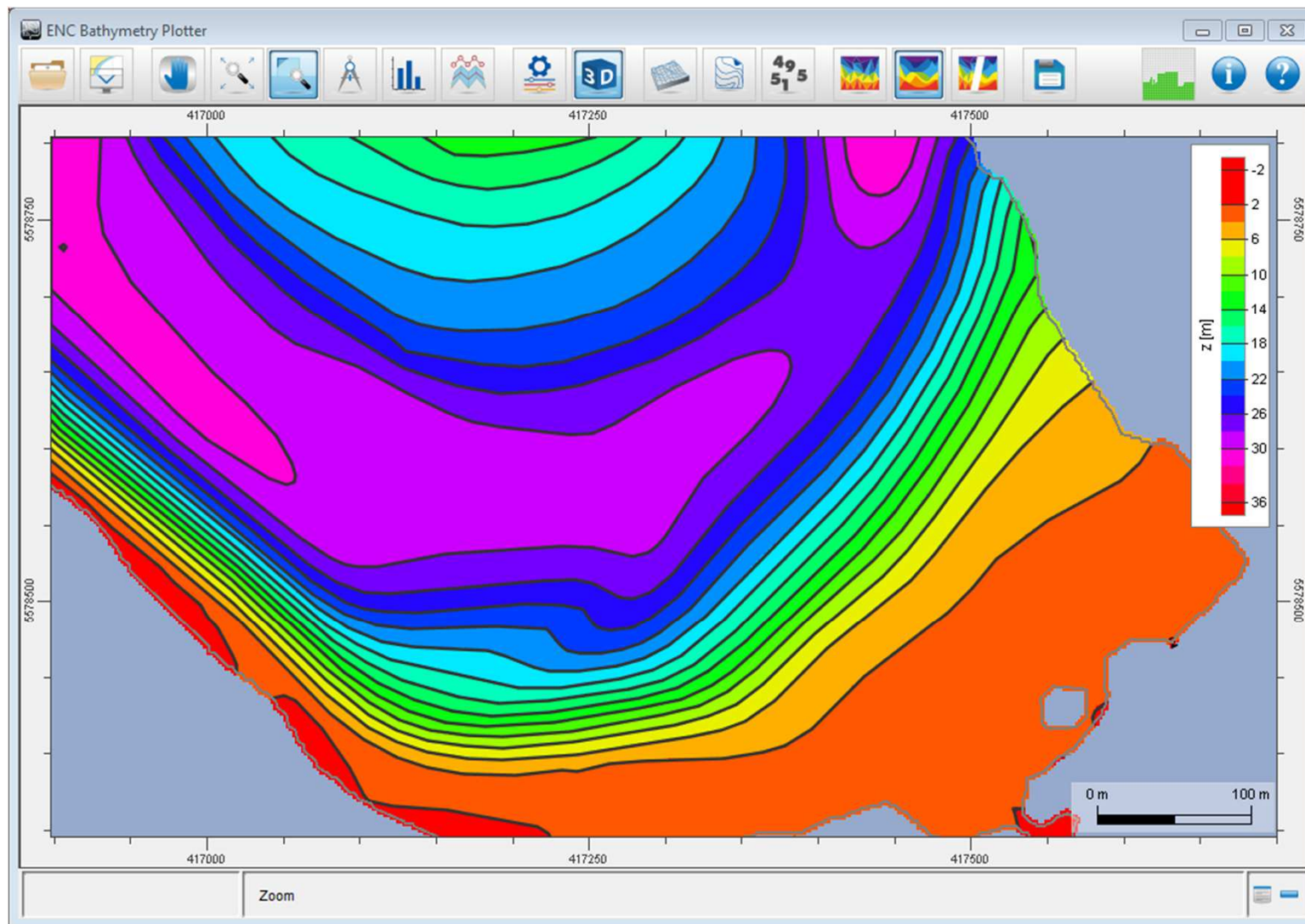
Post Processing Section:

- Generalization of contours
 - Positional tolerance [m]: 1.0
- Remove small areas
 - Diameter smaller than [m]: 20.0

At the bottom of the dialog are "OK" and "Cancel" buttons.

Main Topic

Generate Contour Lines



Main Topic

Export

Export of results

S57 ESRI Shape Files

Depth Contours Data Limit
 Depth Areas Report
 Depth Values (shallow)
 Depth Values (deep)

Coordinate Reference System
32630:WGS 84 / UTM zone 30N

Product: bENC Producer: SevenCs GmbH
Token: 7C Code: 31868

Usage Band: Dataset Base Name (4 Characters): TEST Edition: 1
From: 4 - Approach To: 9 - River berthing
Compilation Scale: 5000
Sounding Datum: 23 - Lowest astronomical tide

Dataset Full Name: 7CB4TEST.000 Folder: C:\temp\Demo

OK Cancel

Export of results

S57 ESRI Shape Files

Nautical model
 Contour Lines
 Depth Values (shallow)
 Depth Values (deep)
 Differences
 Report
 Border

Coordinate Reference System (optional)
32630:WGS 84 / UTM zone 30N

Prefix
7Cs

Folder
C:\temp\Demo

OK Cancel



Main Topic

Advantages:

- 🌐 **Ease of contour line creation**
- 🌐 **Decrease manual interaction**
- 🌐 **Export options:**
 - speed up ENC updating
 - speed up paper chart production
- 🌐 **Set safety contours much more precisely**

→ Safer Navigation!

Q&A



steffen.boie@sevencs.com