



Item 7.2 - French National Report

⚓ One mission (Code de la défense, Art. R3416-3), IHO C-16

SHOM is responsible for providing the knowledge and the description of the physical marine environment, in relation to the atmosphere, the seabed, offshore and in coastal zones, to predict its evolution over time, and to make available all relevant informations

⚓ Three main operational activities, customer-driven

- ⚓ National hydrographic service
- ⚓ Defence support
- ⚓ Support to public maritime and coastal policies

⚓ One foundation function

- ⚓ Establishment of maritime recognized database

Objectives and targets 2013 - 2016



Hydrographic and oceanographic work

→ **No surveys** achieved within the area since RSAHC5.

→ **2014: *Beautemps Beupré*** deployment in the Gulf to conduct on-site ocean **data acquisition** campaign to be used to validate **oceanographic** modelling forecasts (**GAP 2014** and **PHYSINDIEN 2014** campaigns).



New scientific equipment

Toulouse – France – January 14th 2014

→ Inauguration of a new operational production **supercomputer** named 'Aquarium', providing a theoretical **calculation capacity** of **13,000 billions** float operations per second (576 Intel 2,6GHz processors).

→ Aquarium will be dedicated to **ocean modelling** (HYCOM model) and **wave forecasting** (PREVAG system).



**HY
COM**

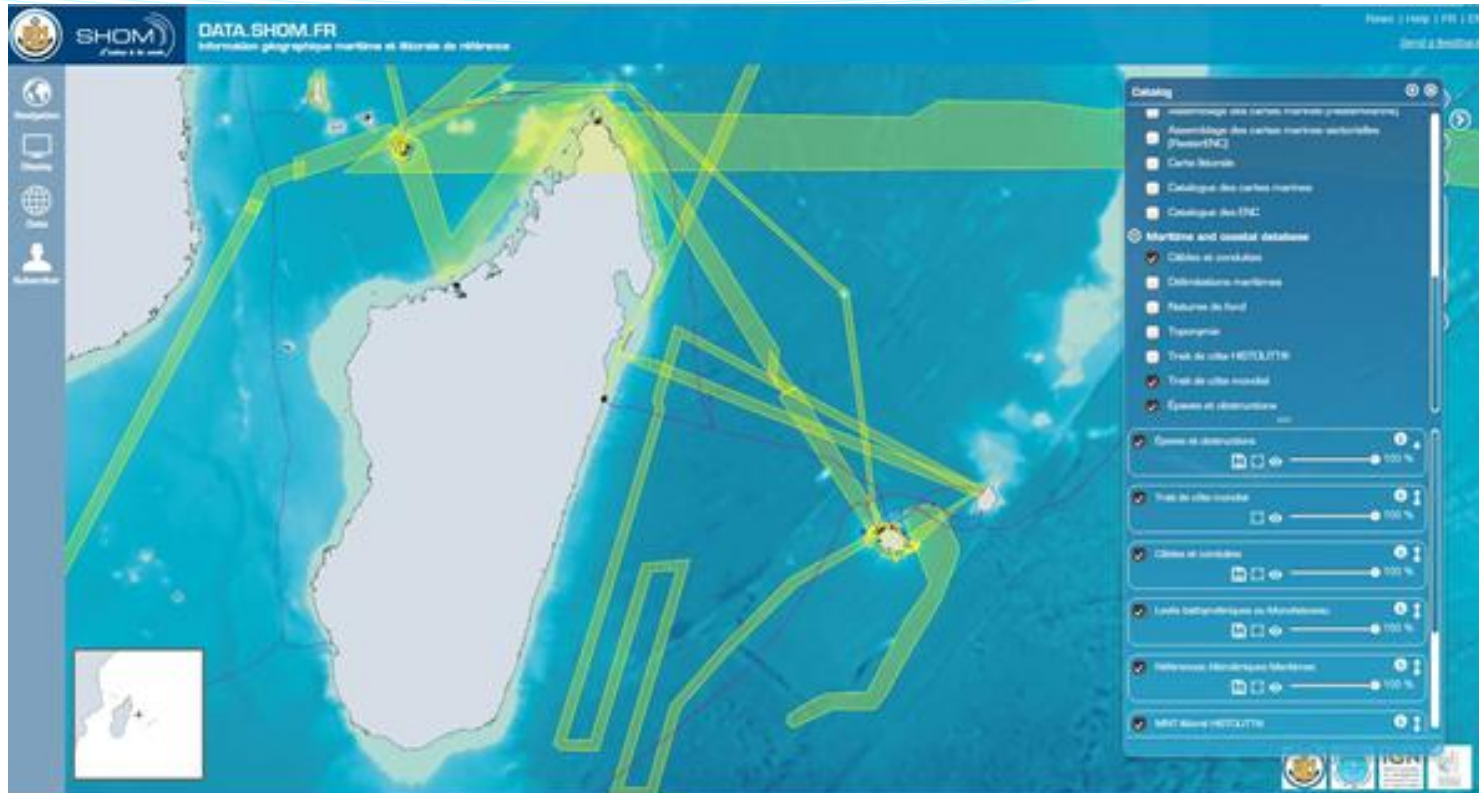
**HYbrid
Coordinate
Ocean Model**



Prevag

Modélisation des états de mer





Maritime & coastal geographic information portal, INSPIRE compliant.

➔ 2 additional services: infonaut.data.shom.fr, cartodyn.data.shom.fr.

➔ More information:

<http://www.shom.fr/les-services-en-ligne/portail-datashomfr/>

Maritime Safety Information updates

➔ Since January 1st 2014, SHOM's notices to mariners (GAN) are **exclusively** available under **digital formats**, either downloadable on shom.fr or by annual subscription (CD-rom).

➔ Infonaut.data.shom.fr, SHOM's MSI bottom-up feedback online service available since mid-2014.

The screenshot displays the SHOM Infonaut web interface. At the top, the SHOM logo and the text 'INFONAUT Service de remontées collaboratives d'Informations nautiques du SHOM' are visible. Below this, there are two tabs: '1. CATÉGORISER' and '2. POSITIONNER'. The '1. CATÉGORISER' tab is active, showing a list of information types with radio buttons for selection. The list includes: Profondeurs, Epaves et obstructions, Trait de côte, Câbles et conduites, Toponymes, Bouées, balises, Zones réglementées, Autres (préciser), Natures de fond, and Feux et signaux de brume. A legend box on the map shows three colored squares: yellow for 'Pending', red for 'Refused', and green for 'Validated'. The map itself shows a coastal area with various geographical features and depth contours.

Questions?
www.shom.fr

