



# **S-11 Part B *Catalogue of INT Charts*** **Region 'I'**

## **Progress made and pending issues**

**International Hydrographic Bureau**

4th RSAHC Meeting, Muscat, Oman, 21-22 March 2011

# Progress made

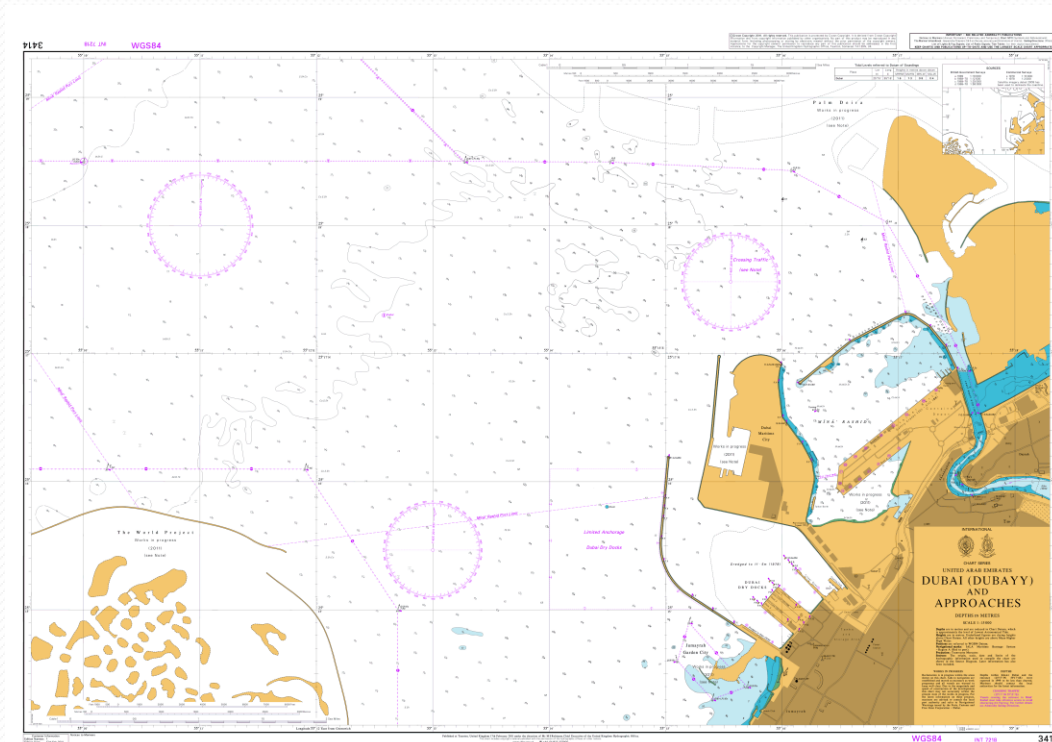
From the information available at the IHB, the following INT charts have been produced, all by UKHO, since the 3rd RSAHC meeting (June 2009) :

- INT 750 (BA 2858) – NC – 2009
- INT 7291 (BA 1265) – NE – 2010
- INT 7248 (BA 3781) – NC – 2009
- INT 7252 (BA 3790) – NC – 2010
- INT 7220 (BA 3739) – NE – 2010
- INT 7218 (BA 3411) – NE – 2011
- INT 7200 (BA 3520) – NE – 2010

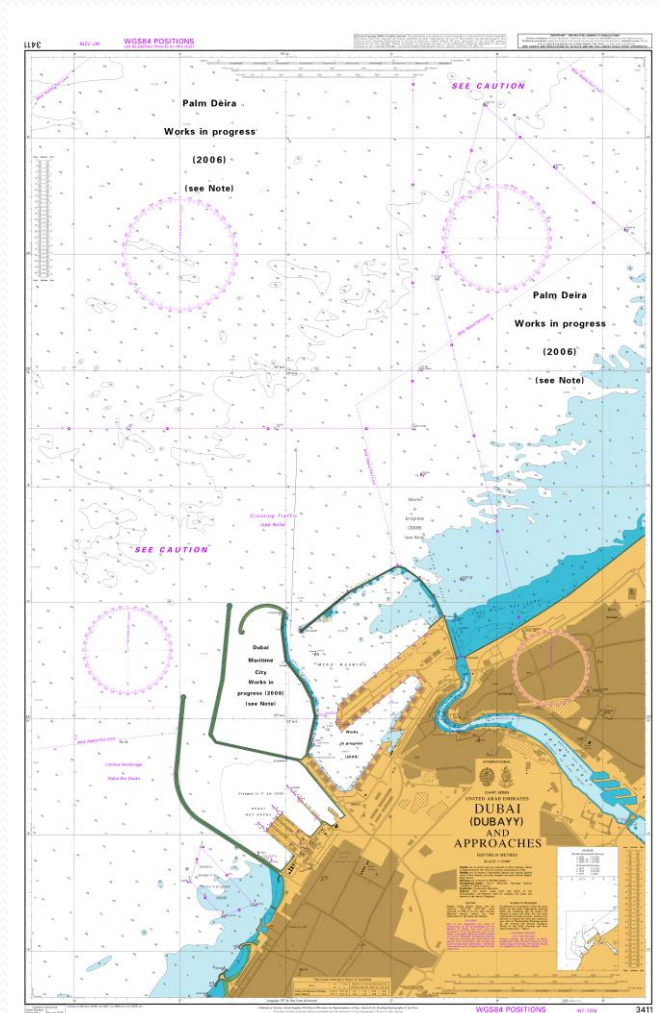
In total, as of March 2011, 45 INT charts have been published, out of the 111 INT charts in the Region 'I' INT Chart Scheme.

# INT 7218 (BA 3414) : Change of format

UK Producer

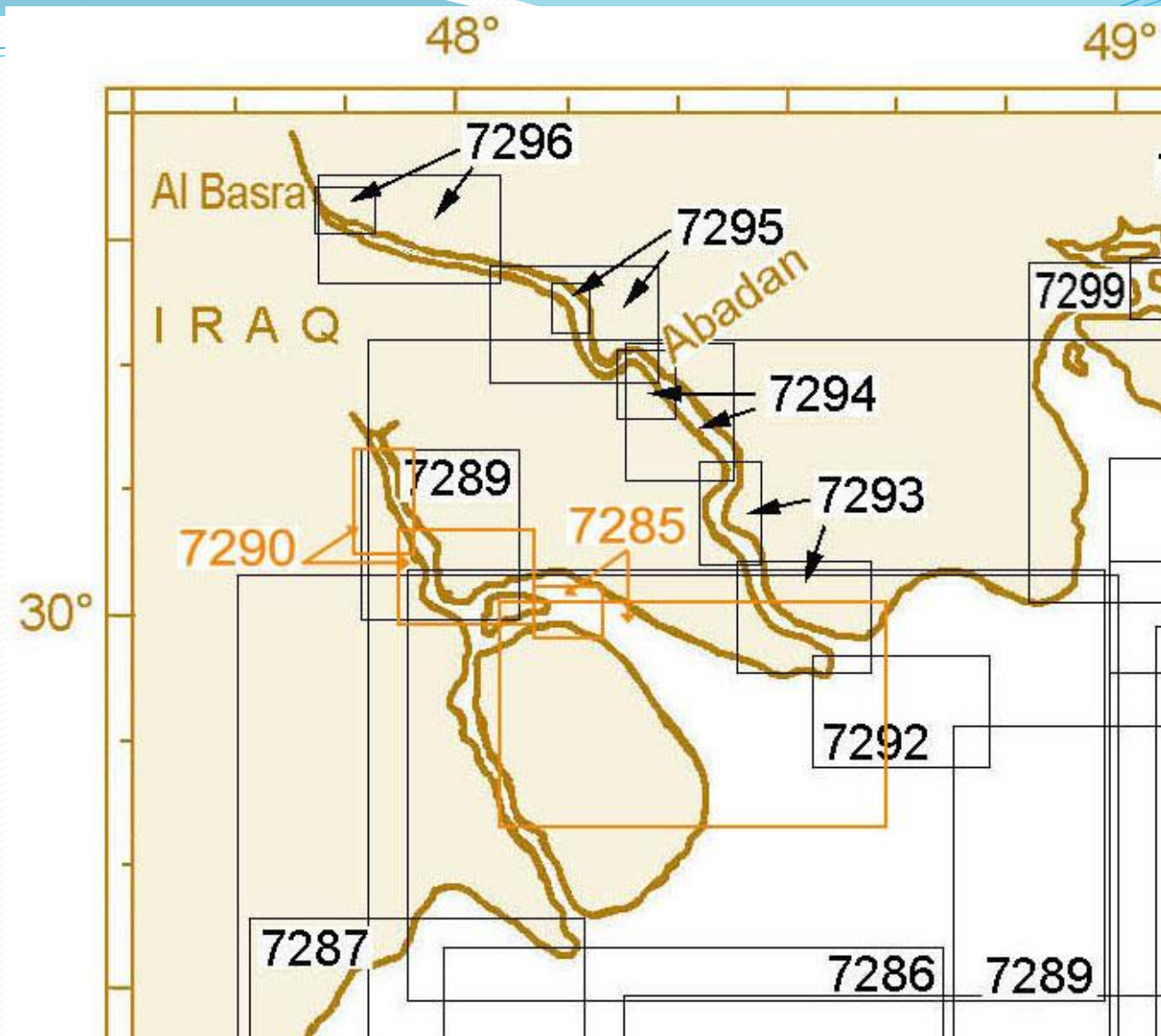


New (BA 3414)



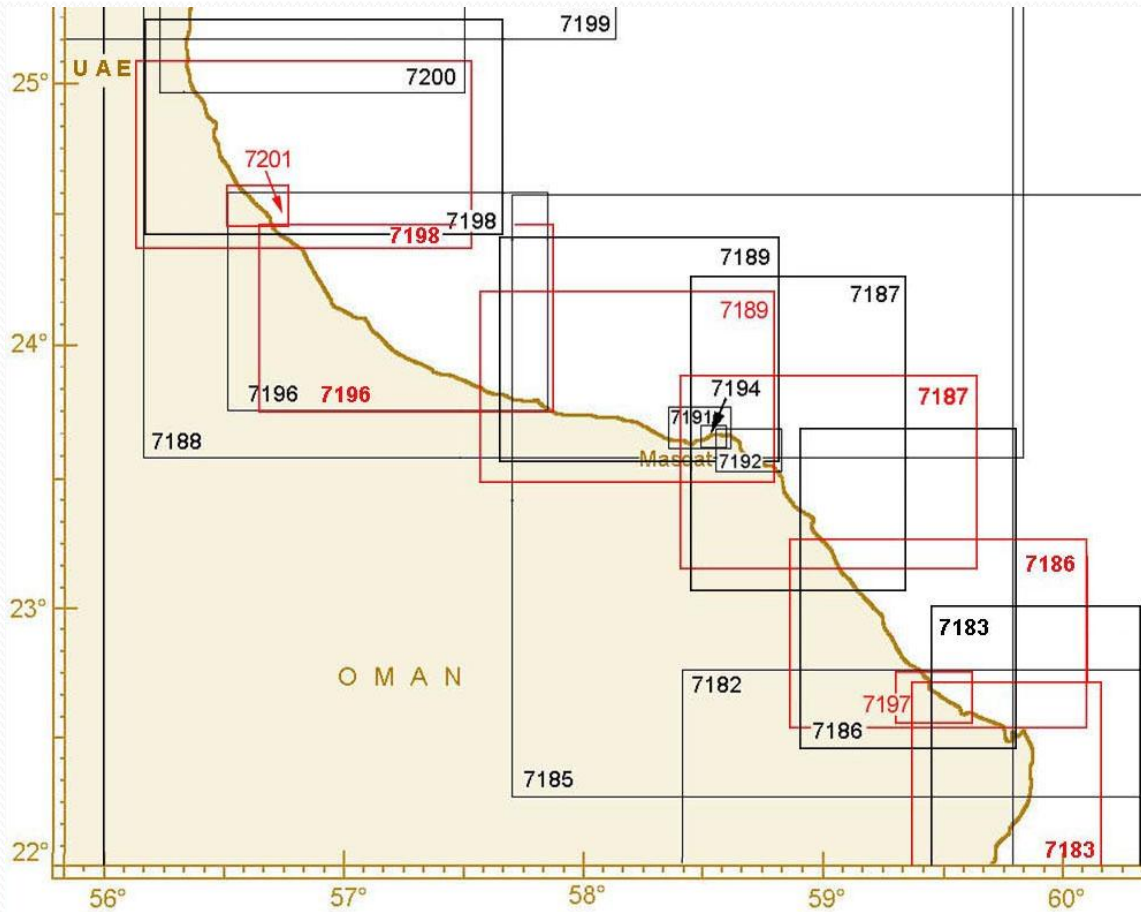
Old (BA 3411)

**Pending**



Inclusion of two new charts proposed by UKHO (2006).  
Numbers suggested by IHB.

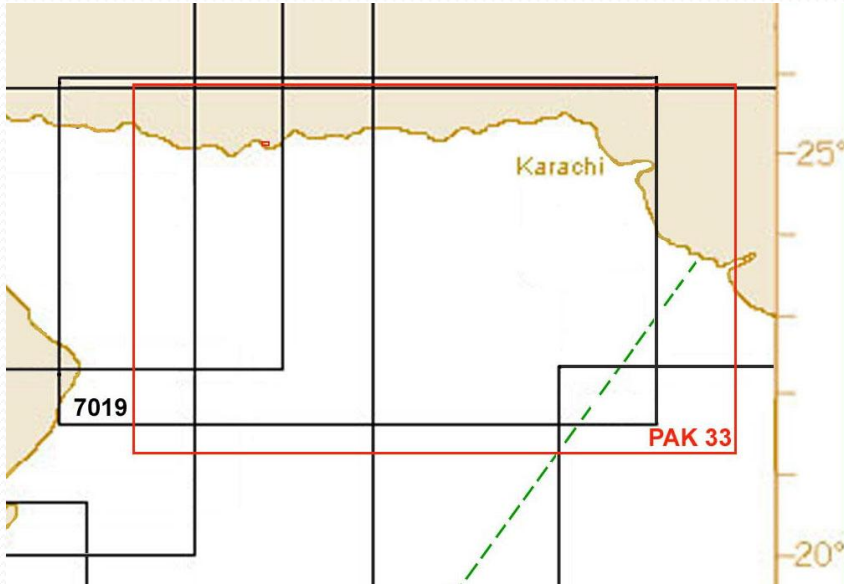
# Pending



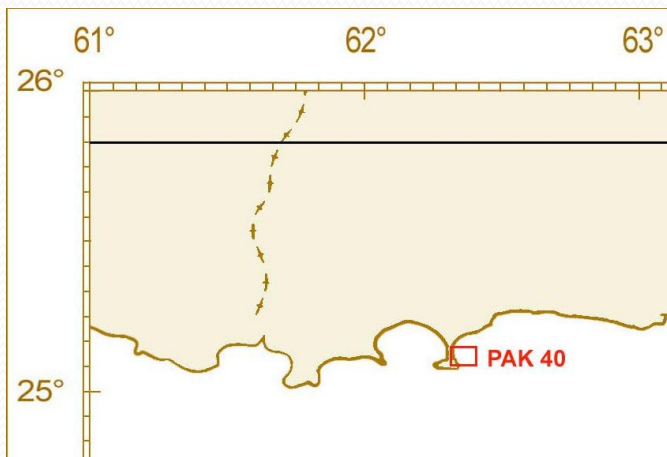
- Oman 257 to become INT 7201 (new chart)
- INT 7198, 7196, 7189, 7187 & 7186: revised limits proposed by Oman as producer
- Oman 301 to become INT 7197 (new chart)
- Oman 1211 to become INT 7183 (new chart)

**Proposal by Oman and IHB (2005)**

## Pending



- PAK 33 proposed as INT 7020 by PK. Large overlap with existing INT 7019 (PAK-58). Pakistan may wish to propose substituting PAK-58 with PAK-33 as INT 7019.



- PAK 40 proposed as INT 7313 by PK.

**Proposals by Pakistan (2006)**

## Basic Rules

### Publication S-11, Part A , § 3.12

***“... for major changes to a chart, for partial re-scheming and for the addition or deletion of an INT chart, the ICCWG should be consulted, via the Regional Co-ordinator.”***

### Publication S-11, Part A, § 3.13

***“Any changes to scale, limits or numbering of International Charts, which affect S-11 Part B ‘Catalogue of International Charts’, shall be notified to IHB, who will update the Catalogue.”***



## **Establishment of ICCWG**

**“Chairs of Regional Hydrographic Commissions** are invited to consider using the generic TOR/ROP contained in Annex C to S-11 Part A, to continue or to establish International Charting Coordination Working Groups (ICCWG) in their regions.”

(IHO CL 23/2010, § 4)



**Thank You**