



Who is iXBlue?

Innovation & eXcellence

25 years. Independent group

450 employees, 8 divisions

80% Marine, 80% Abroad

6 Production Sites, ISO certified

Worldwide Presence

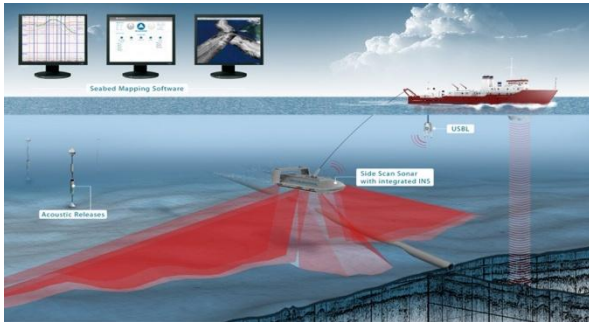
24/7 WorldWide Support

**24/7
Worldwide
Support**

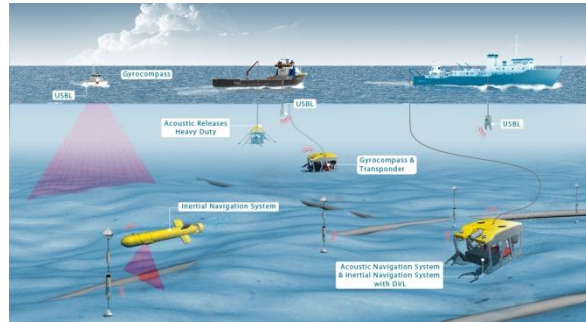
support@ixblue.com
+33 1 30 08 98 98

Advanced Components Marine Works

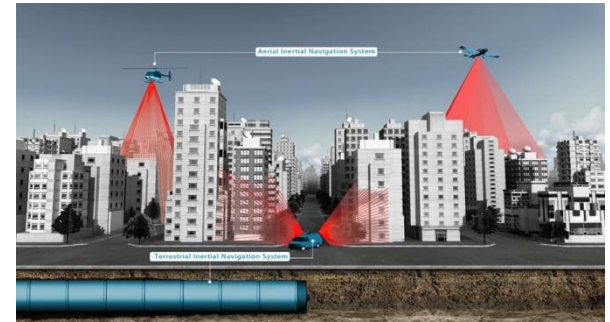
Our Markets



Geosciences



Offshore



Mobile Mapping



Naval Defense



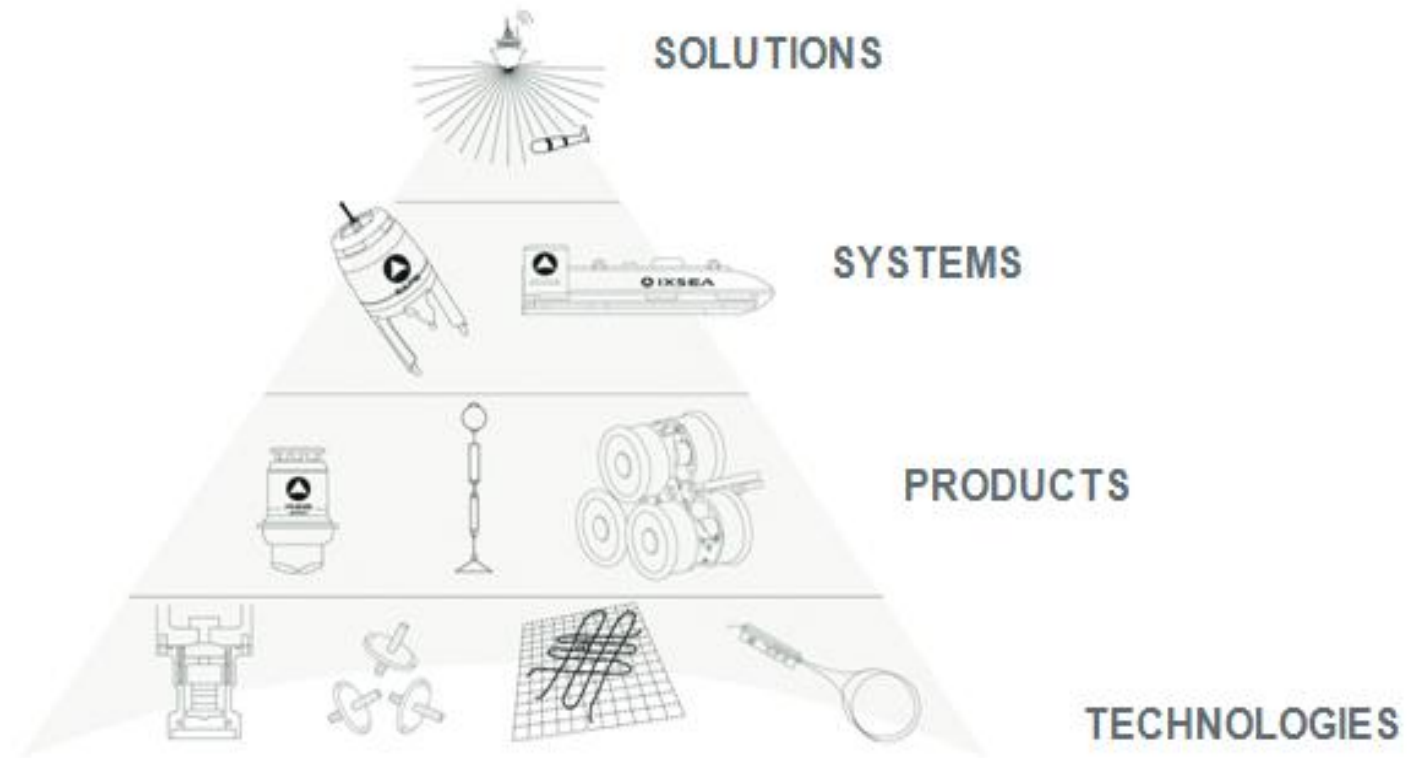
Land Defense



Space

iXblue's Hydrographic Proposal

Our approach



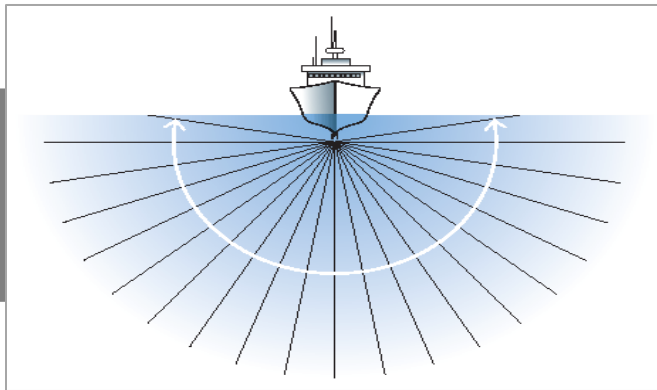
Technology



Fiber Optic Gyroscopes (FOG)

Technology

Fiber Optic Gyroscopes (FOG)



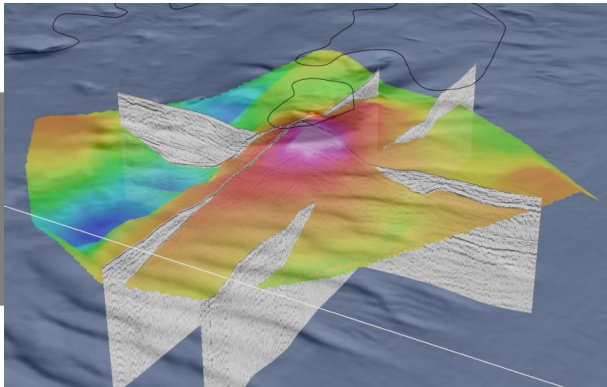
Acoustic

Technology

Fiber Optic Gyroscopes (FOG)

Acoustic

Seabed Imagery



Products

Products

Inertial Products

- ❑ **FOG TECHNOLOGY**
- ❑ **GYROCOMPASS & MOTION SENSORS**
- ❑ **INERTIAL NAVIGATION SYSTEMS (INS)**



QUADRANS



OCTANS



PHINS



MARINS



OCTANS 300C



ROVINS



PHINS 6000

Products

Hydrins

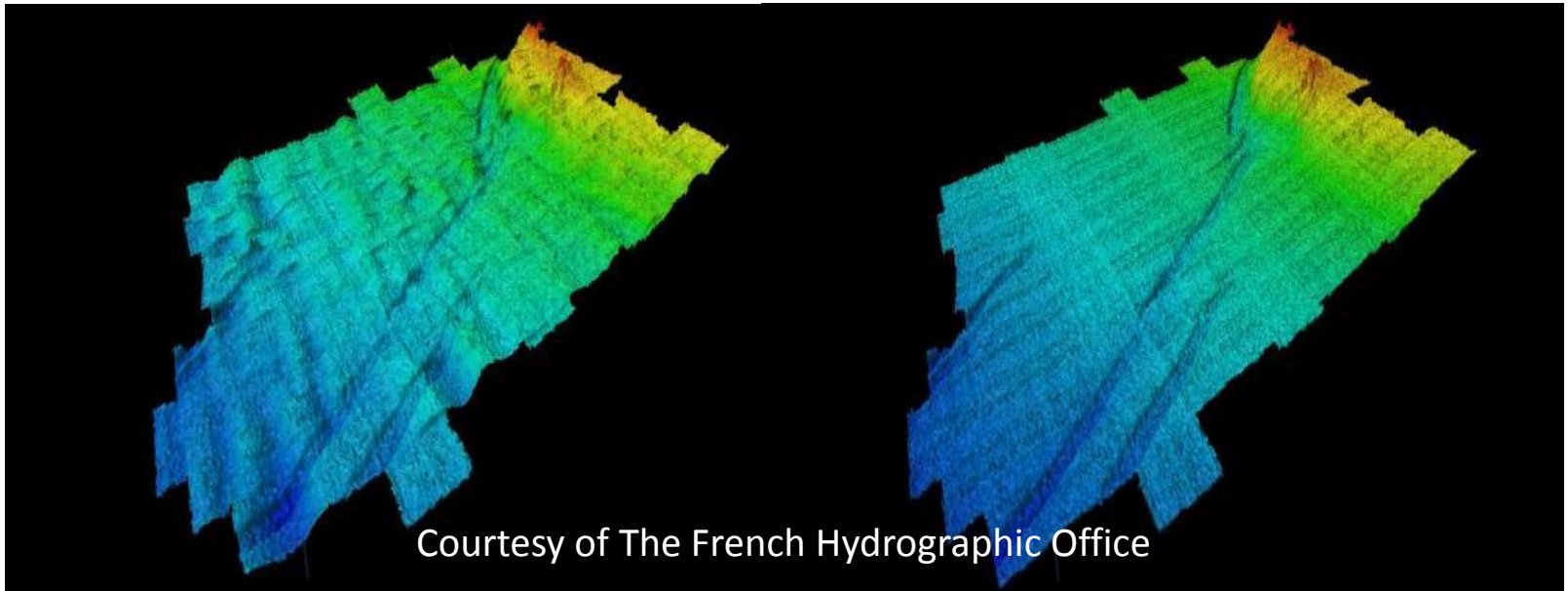


High Performance INS optimized for Hydrographic Survey using MBES.

- **Position accuracy in real time 3 times better than GPS**
- **0.01° Heave accuracy**
- **0.01° Roll & Pitch Accuracy**
- **2.5cm or 2.5% Heave Accuracy (Smart Heave)**

Products

Hydrins



Bathy with real-time heave
(vertical exaggeration)

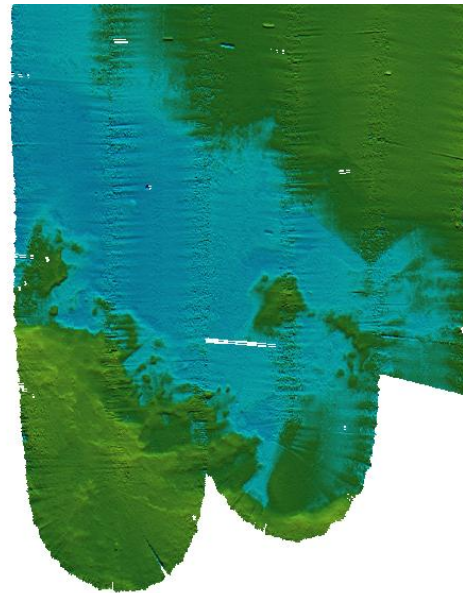
Bathy with delayed heave (Smart Heave TM)
(vertical exaggeration)

Products

Hydrins



Bathy with real-time heave

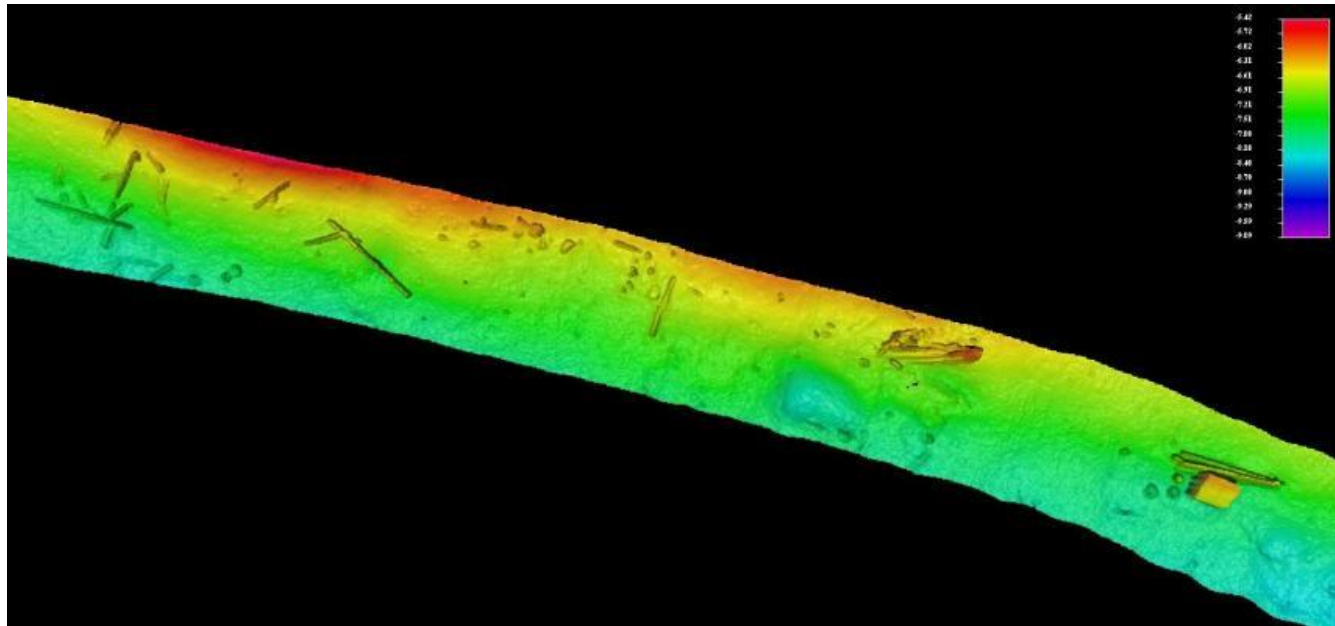


Courtesy of Genavir

Bathy with delayed heave
(Smart Heave TM)

Products

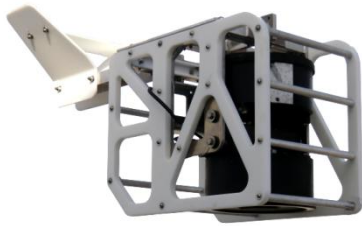
Hydrins



**HYDRINS in USE with R2SONIC MBES, Norfolk
USA 2009**

Products

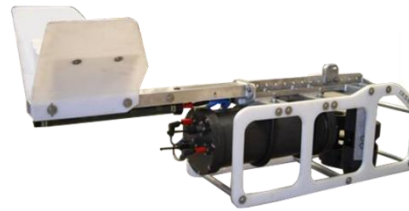
Sub Bottom Profilers



Echoes 1500



Echoes 3500



Echoes 5000

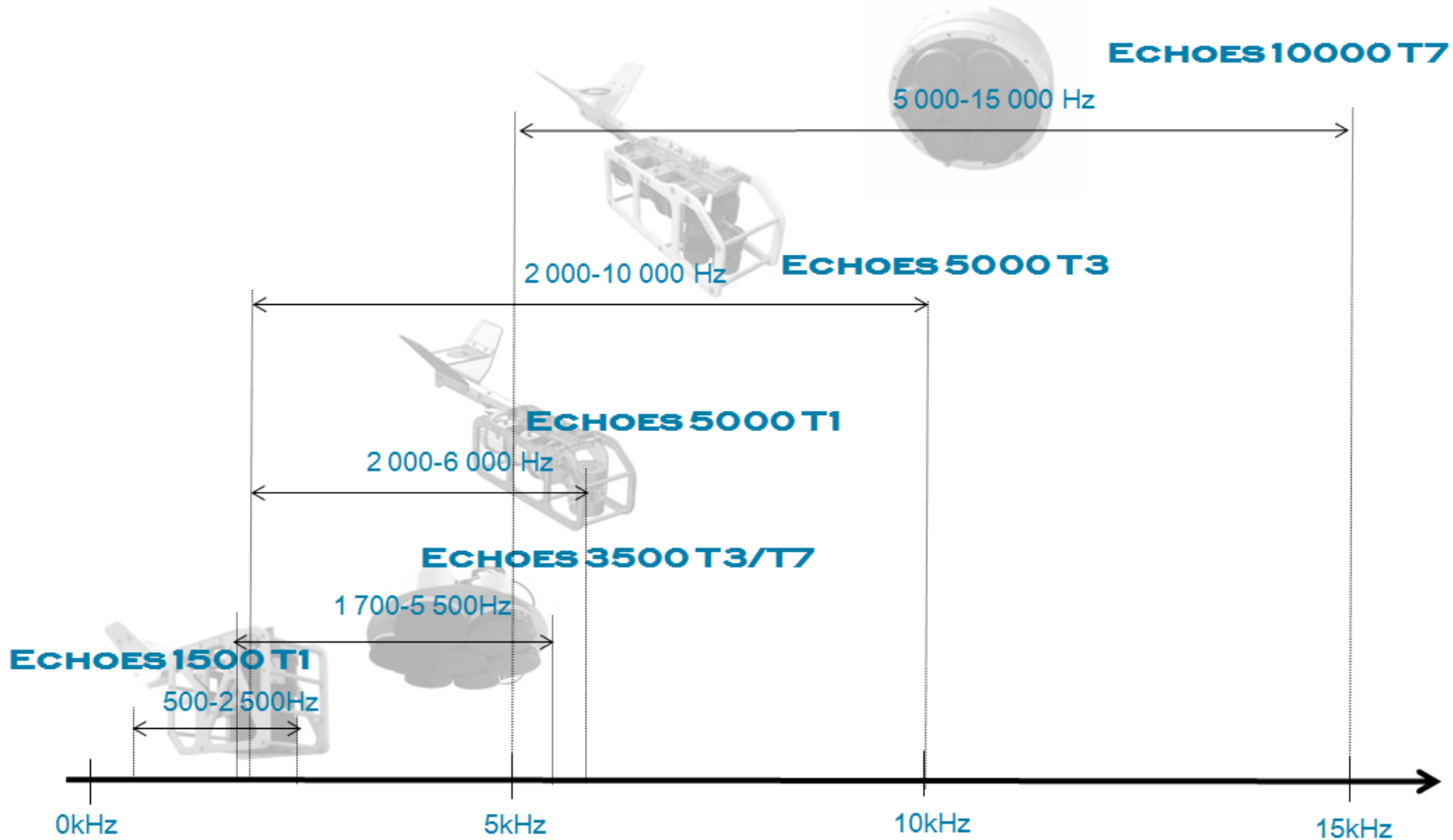


Echoes 10000

**Wide-Band, Flat-Spectrum, Chirp-based,
Sub-Bottom Profilers
delivering High-Resolution Data.**

Products

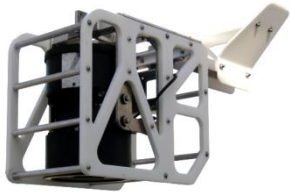
Sub Bottom Profilers



Products

Sub Bottom Profilers

Options



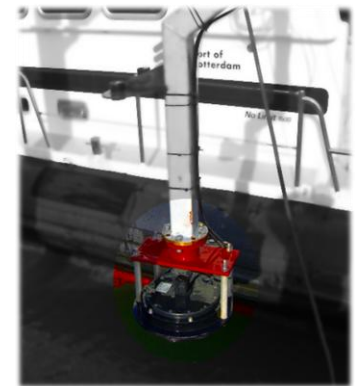
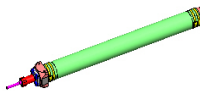
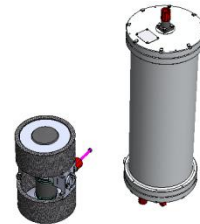
ECHOES 1500 FISH



ECHOES 3500



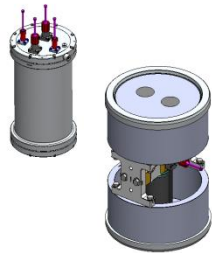
ECHOES 5000 FISH



ECHOES 10000



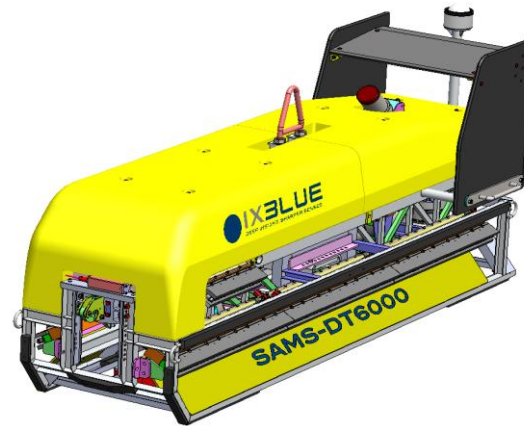
ECHOES 1500 Deep Technology



ECHOES 5000 - AUV

Products

Synthetic Aperture Sonar



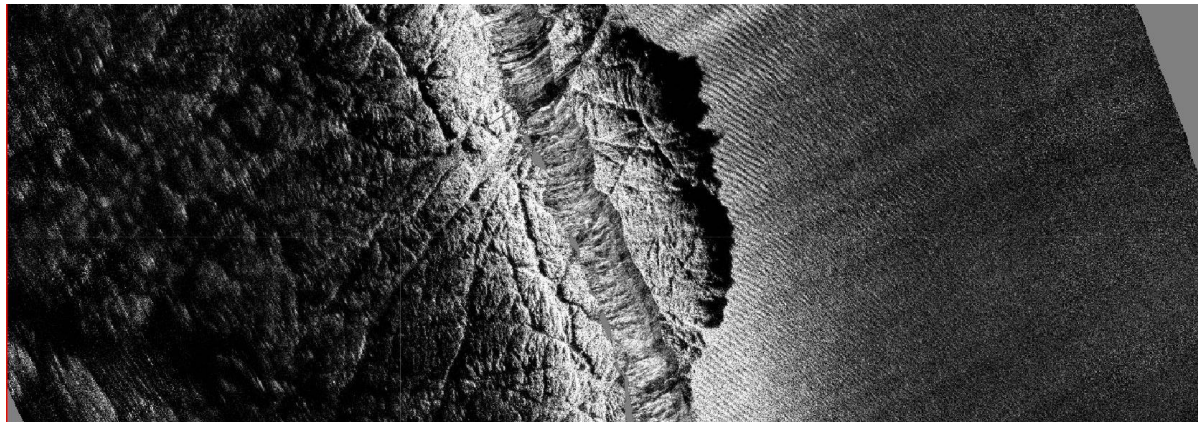
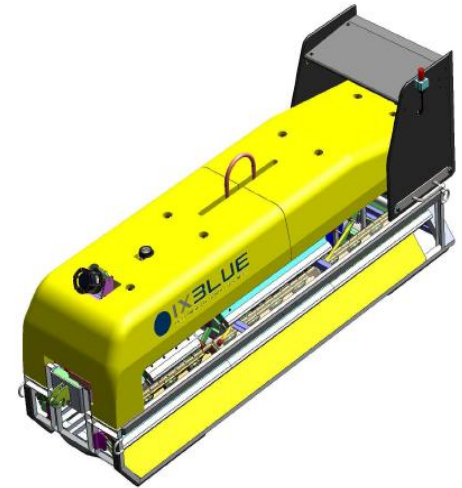
SAMS-DT6000 : Up to 133km²/day

High-Productivity Mapping Sonar
for Deep Tow / Large Swath Survey
down to 6000m

Products

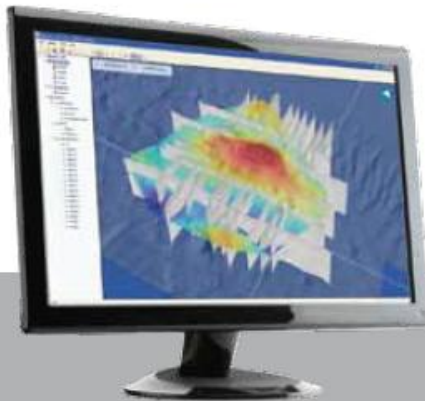
Synthetic Aperture Sonar

- **1500m swath @2knots (133km²/day)**
- **40cm constant resolution**
- Fish Size : 320cm x 100 cm x 120 cm
- 1000kg in air, ~0 kg in water
- 6000m depth qualified



Products

Acquisition & Post Processing Software



DELPH SEISMIC



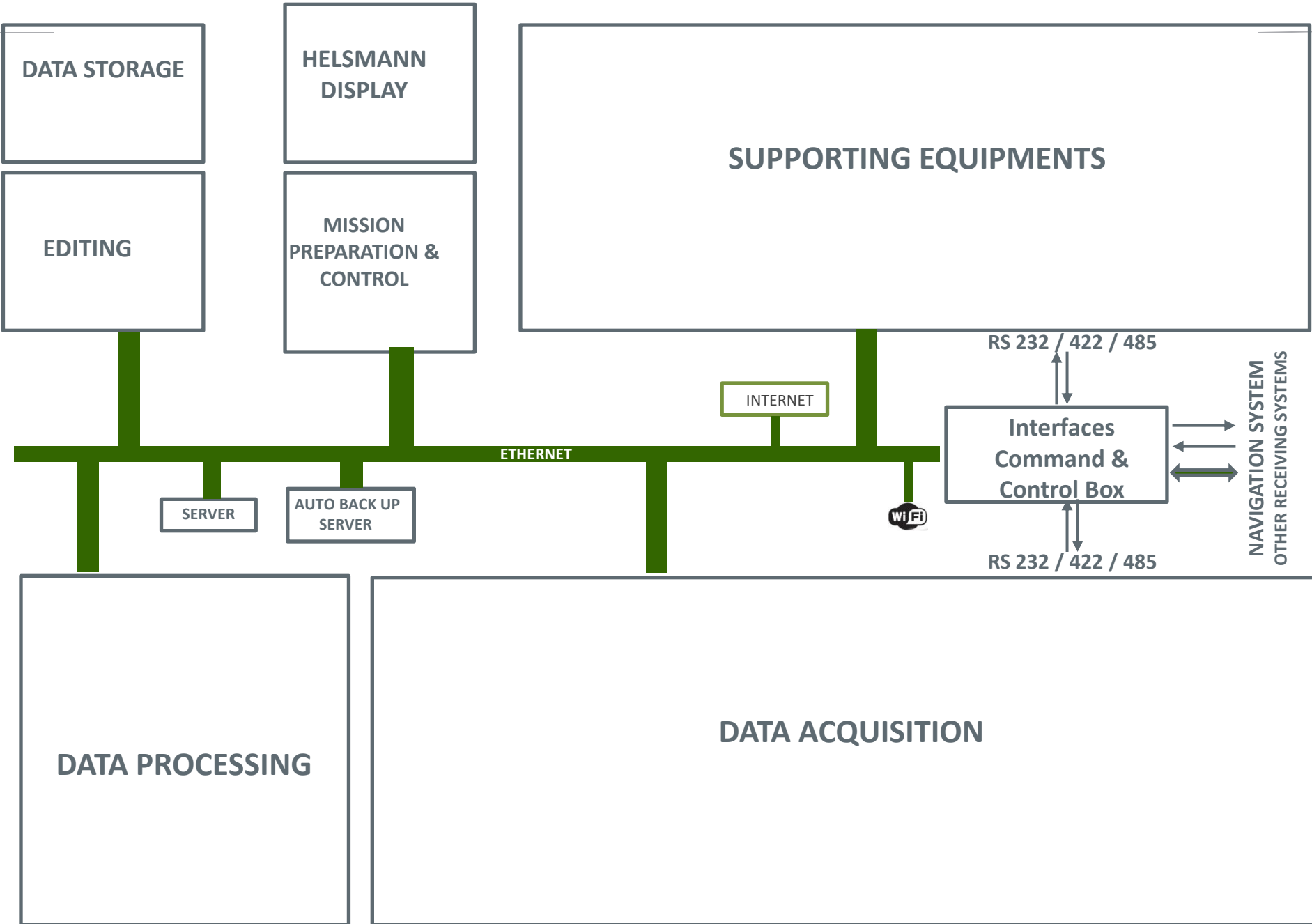
DELPH SONAR



DELPH MAG
LOCATOR

Systems

iXBlue's Approach



DATA STORAGE

SERVER

HELSMANN DISPLAY

EDITING

SERVER

MISSION PREPARATION & CONTROL

SUPPORTING EQUIPMENTS

AHRS

ACOUSTIC POSITIONING

GPS

SV

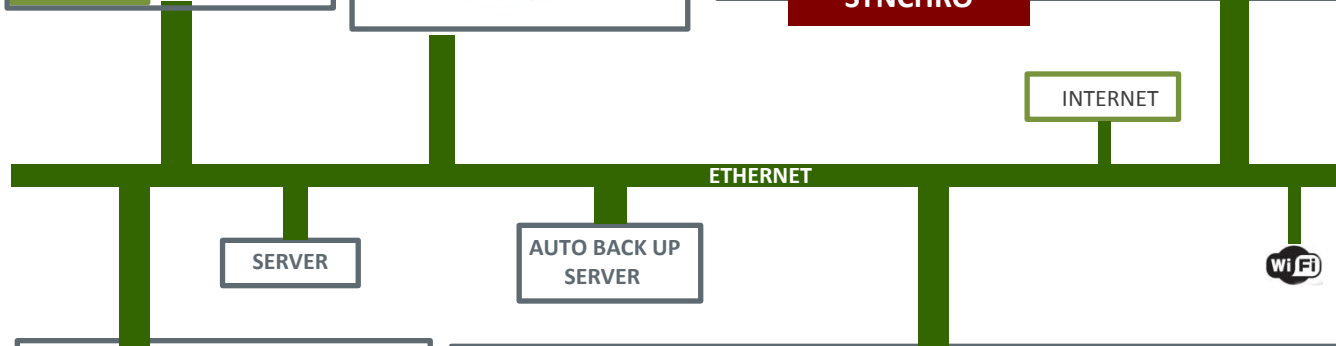
SV PROFILE

WEATHER

SATCOM

TIME SYNCHRO

RS 232 / 422 / 485



Interfaces Command & Control Box

NAVIGATION SYSTEM

OTHER RECEIVING SYSTEMS

RS 232 / 422 / 485

DATA PROCESSING

DATA ACQUISITION

Deep Water Multi Beam Echo Sounder

Shallow Water Multi Beam Echo Sounder

Single Beam Echo Sounder

Sub Bottom Profiler

Side Scan Sonar

Magnetometer

Acoustic Current Profiler

CTD sampler

PULSE SYNCHRO

iXBlue's Approach

- **Supply of all necessary information for installation and integration on board**
 - Installation block-diagrams, Items space drawings, Electronically appraisal, Weights appraisal, Cables definition drawings, Installation Cabling drawings and documents,
- **Termination connection**
- **Supply of Test programs**
- **Supply of User manuals and technical manuals,**
- **Support to Integration and installation, testing and commissioning of survey systems.**
 - Alignment and Harmonization with Navigation System equipment,
 - FAT STW,HAT and SAT
- **Users' and maintainers training**
- **Specific trainings**

H2X Shipyard

La Ciotat
France



New Built
Refit
Mono Hull / Catamaran
Composite / Aluminium



H2X Shipyard

Hydro Survey Ship



H2X Shipyard

Hydro Survey Ship



H2X Shipyard

Hydro Survey Ship



H2X Shipyard

Hydro Survey Ship



H2X Shipyard

Hydro Survey Ship



H2X Shipyard

Hydro Survey Ship



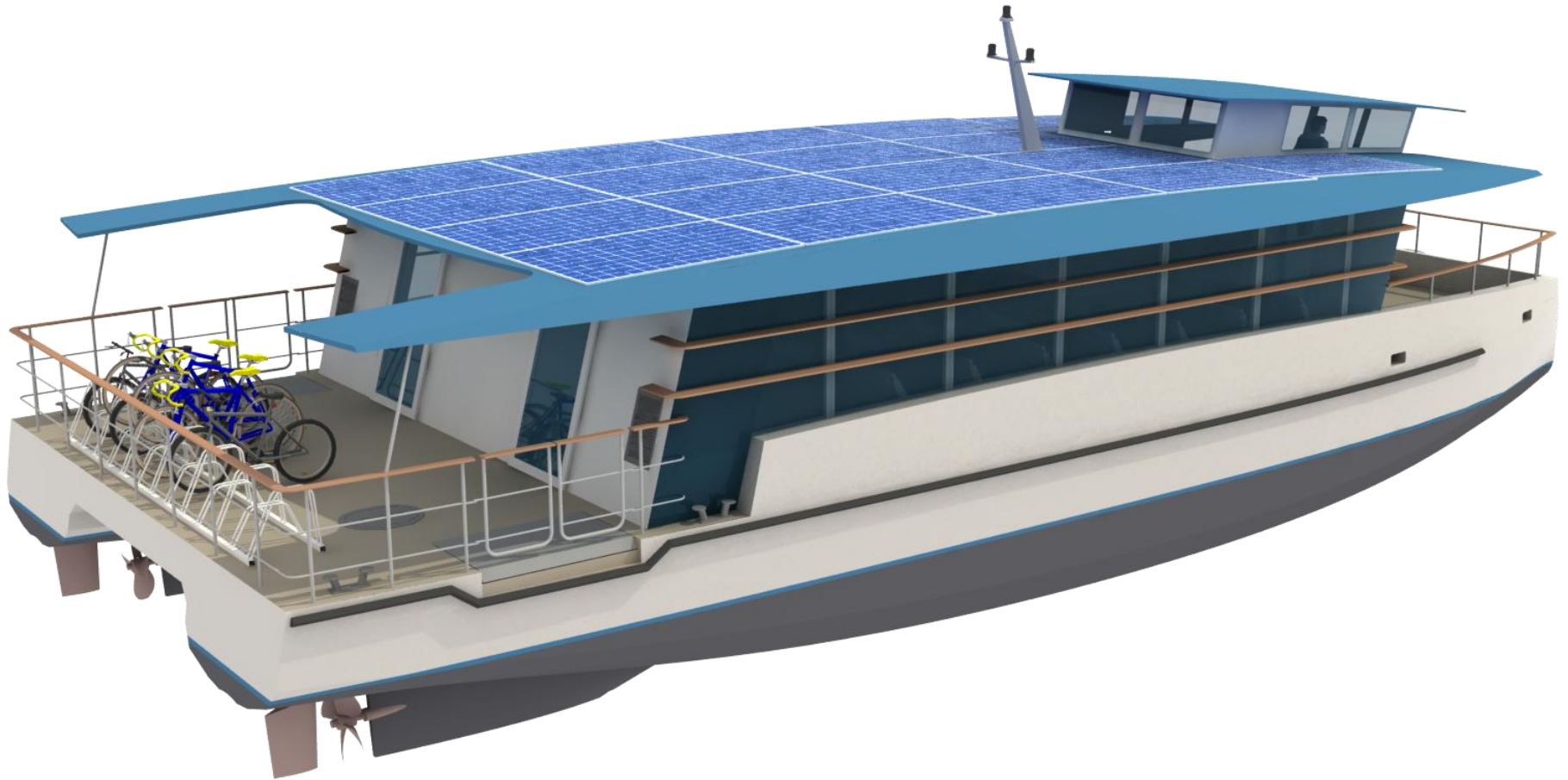
H2X Shipyard

Patrol and pilot boats



H2X Shipyard

Electro solar catamaran



H2X Shipyard

Hydro Survey Ship



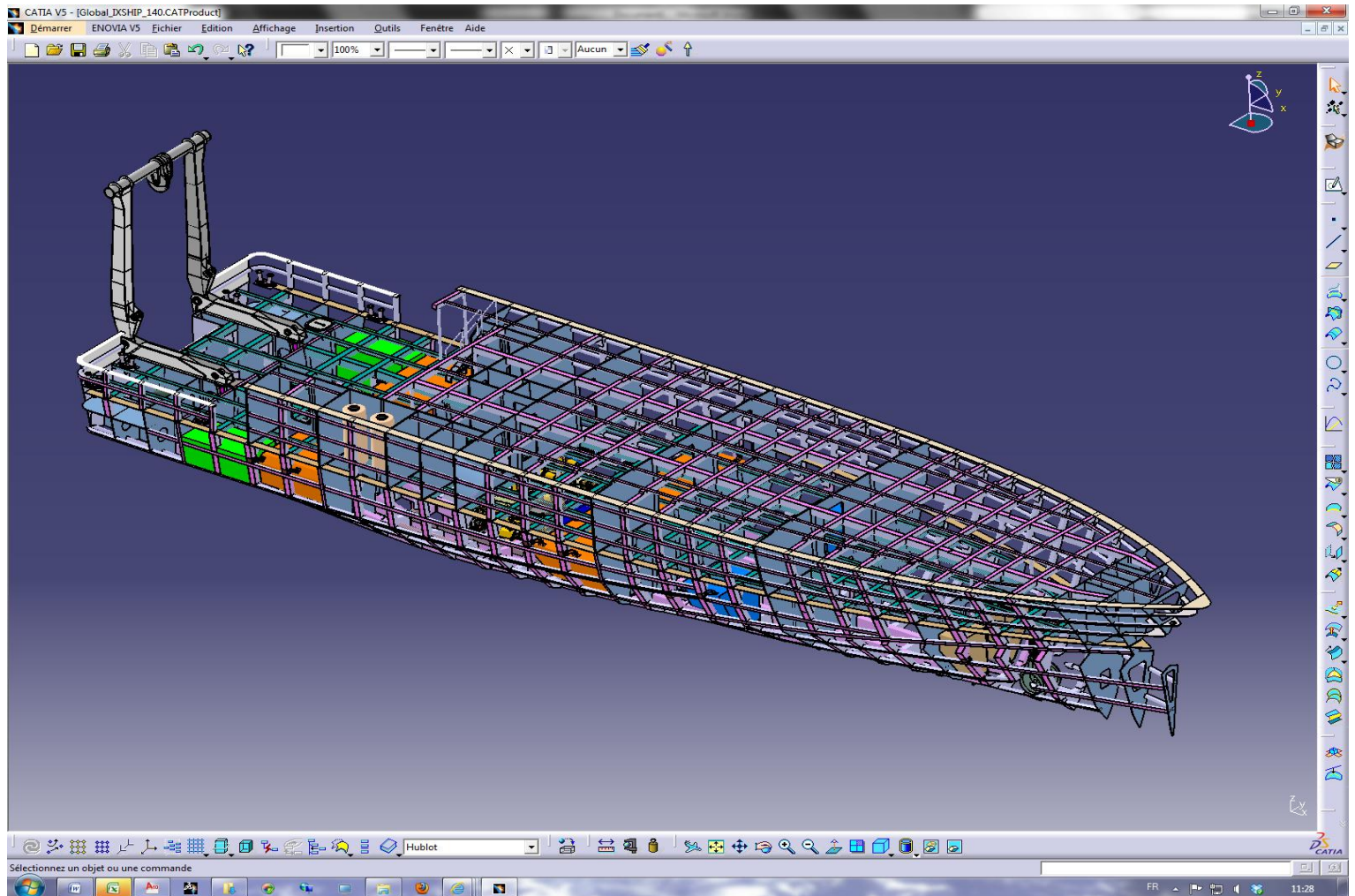
H2X Shipyard

Hydro Survey Ship



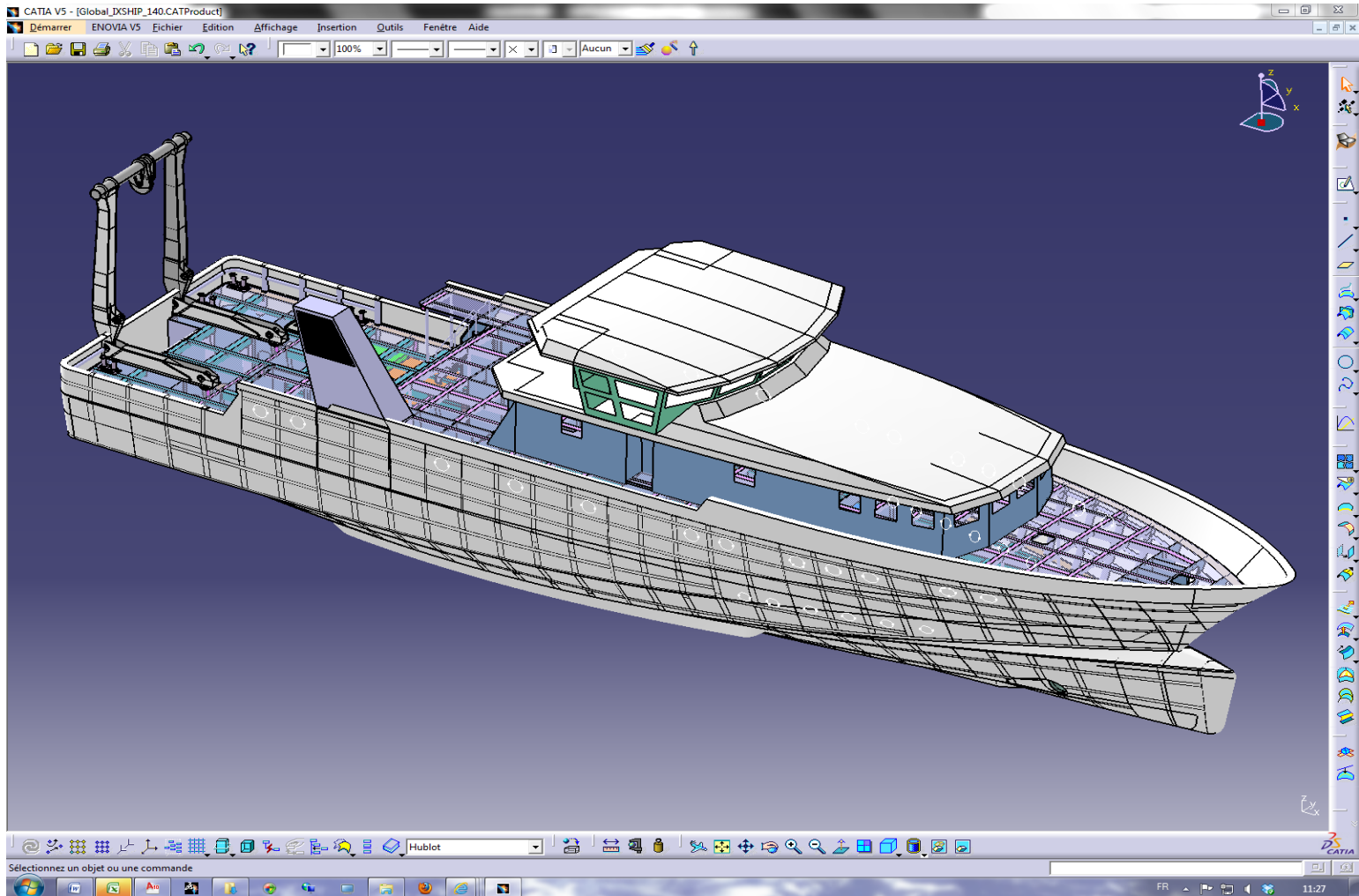
H2X Shipyard

Numerical conception & building processes



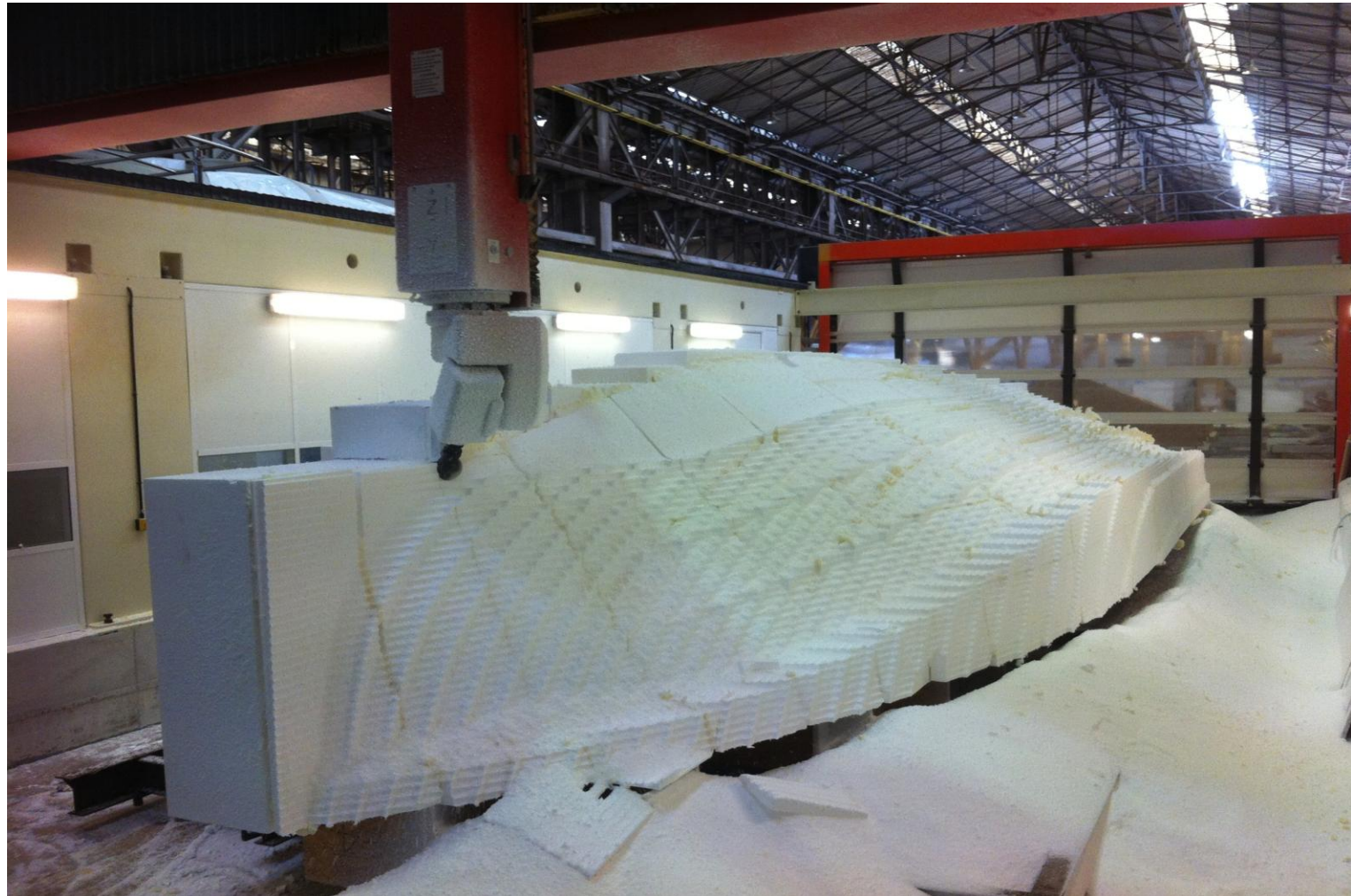
H2X Shipyard

Numerical conception & building processes



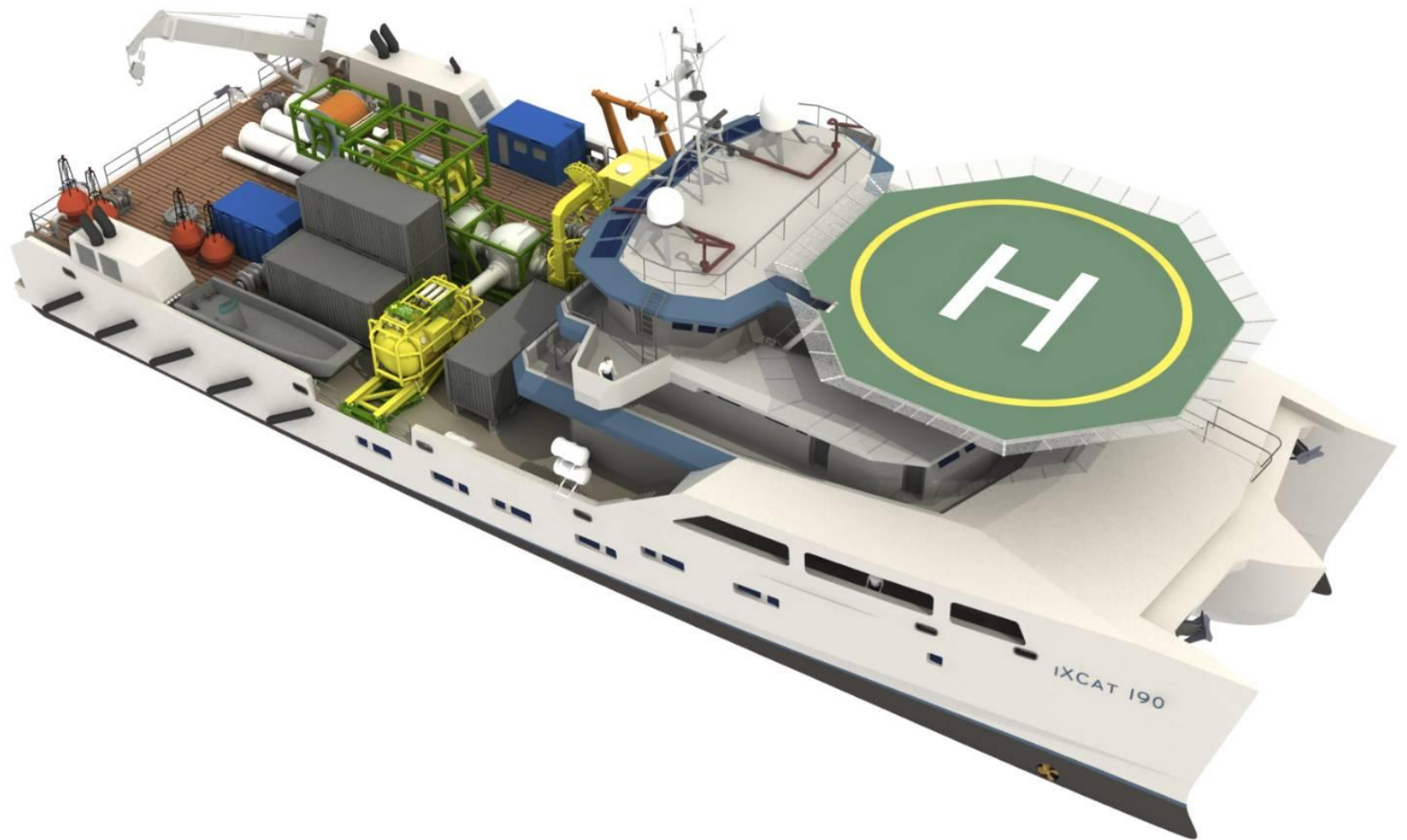
H2X Shipyard

Numerical conception & building processes



H2X Shipyard

Hydro offshore all purpose vessel



H2X Shipyard

Hydro offshore all purpose vessel



H2X Shipyard

Hydro offshore all purpose vessel



H2X Shipyard

Hydro offshore all purpose vessel



43m Hydro Survey Ship

o-international.com/news/id5747-Larger_Survey_Vessel_for_Saudi_Arabian_University.html?utm_source=Newsletter&utm_medium=email&utm_campaign=

- Buyers Guide
- Dealers Wanted
- Hydro Interactive
- Books
- Photo Albums
- Papers
- Jobs
- Training
- Webinars
- About HI
- Advertising
- Subscription
- Partners
- Editorial team
- Contact

Larger Survey Vessel for Saudi Arabian University

02/10/2012

H2X, a member of France-headquartered iXBlue's marine works division, has been awarded a contract to build a 43-metre monohull survey vessel by a leading Saudi Arabian university specialising in hydrographic and oceanographic studies. The vessel will be of a standard design with various modifications to meet defined operational needs.



Hydrographic jobs

Constructed mainly from lightweight composite materials, the vessel will be propelled by two diesel and two classical shaft lines for transits, and by a pump-jet azimuthal stern thruster and have a bow thruster to ensure maximum manoeuvrability; it will also be fitted with a dynamic positioning capability. The vessel will be handed over to the owners complete with all the navigational, positional and survey equipment necessary to conduct scientific work from day one at water depths to over 2,000 metres.

The vessel will be built at H2X's La Ciotat shipyard in the south of France, near Marseille. Design work is almost complete and construction of the vessel should start later this year. Delivery is scheduled for the second half of 2014. Contracts for the supply of the various onboard systems are expected to be awarded in the coming months.

Last Comments

"I have a comment on
["I want to do ROV training, Is "](#)
 OLATUNDE

"I like to work with your

- ▶ 3D Sonar Map Reveals Details of Civil War Wreck
- ▶ More news

Tools for High Resolution and Accurate Positioning, Monitoring, Inspection and Mapping

KONGSBERG

SUBSEA PRODUCT SEMINAR TOUR 2013

Submit for free today

Septentrio
 Satellite Navigation



Interactive

43m Hydro Survey Ship



Mono Hull 43m
Composite Hull and Superstructure
380T

43m Hydro Survey Ship



Speed

- Max 14 knots
- Cruise 12 knots
- Survey 2-7 knots

43m Hydro Survey Ship



43m Hydro Survey Ship



A frame

- 7T
 - 5m under gantry
 - 3,1 m width
- 12 T /m crane, jib 12m

43m Hydro Survey Ship



43m Hydro Survey Ship



43m Hydro Survey Ship



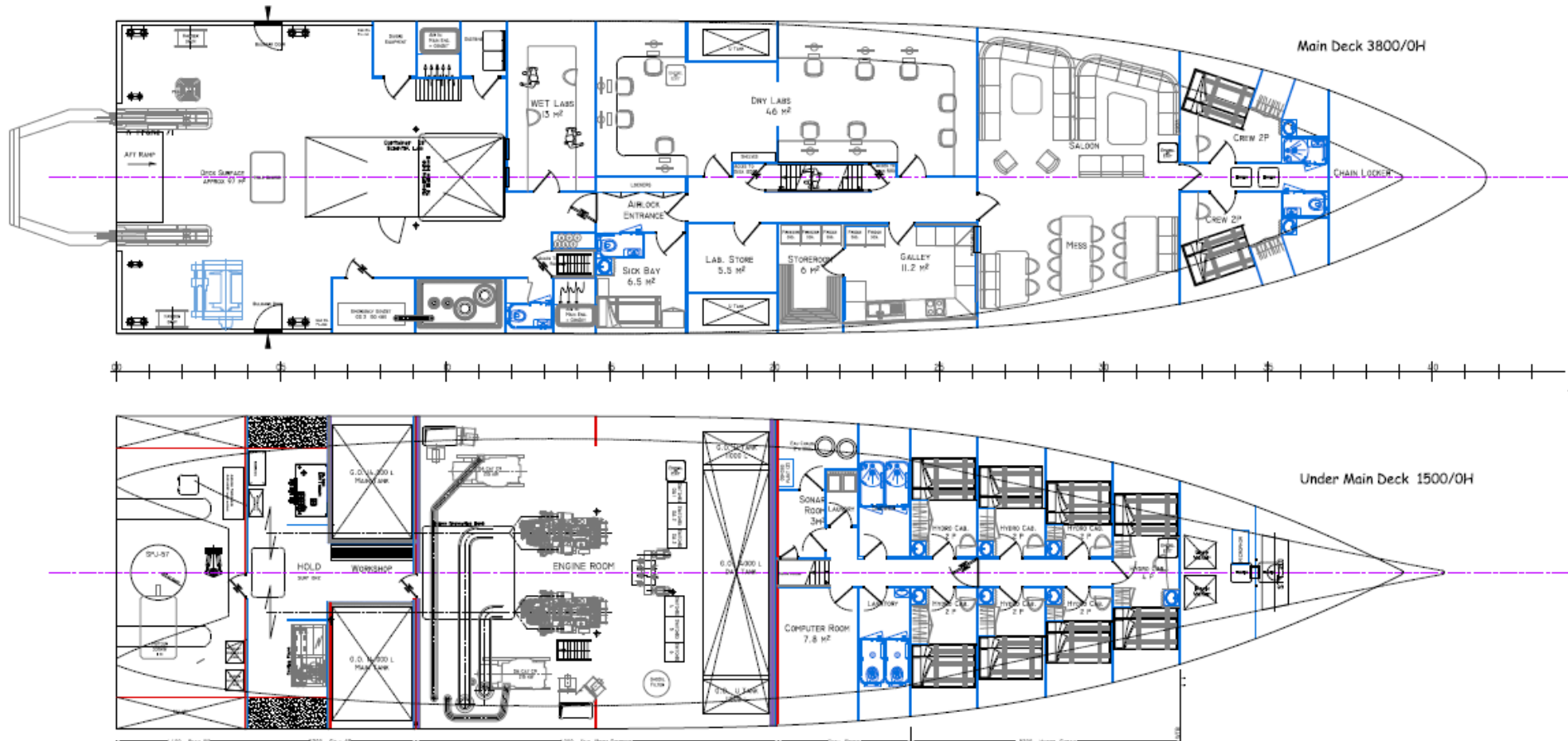
1 bow thruster
2 diesel generator 215 kW
1 emergency generator 125 kW
Dynamic positioning

43m Hydro Survey Ship



Diesel propulsion 2 X 1030 kW
2 shaft line propellers
1 Azimuthal pump jet

43m Hydro Survey Ship



43m Hydro Survey Ship

Under constuction



43m Hydro Survey Ship

Under constuction



43m Hydro Survey Ship

Under constuction

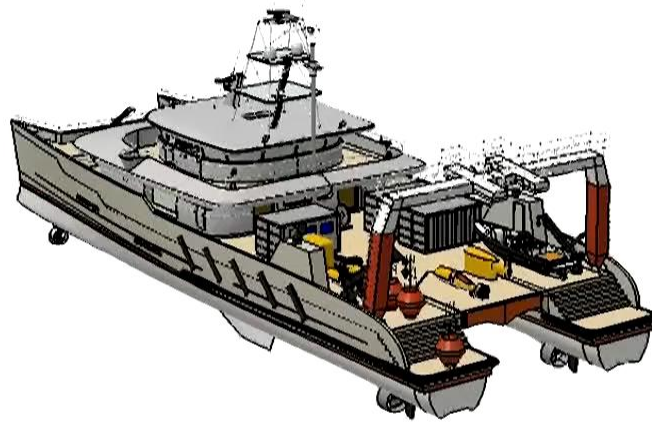


43m Hydro Survey Ship

Under constuction



H2X folding gondola on catamarans



Thank You

Joachim de Jenlis

Regional Manager
 iXBlue Dubai Office
 +971 50 6648390
 Joachim.de-jenlis@ixblue.com

Sebastien Grall

President
 H2X Shipyard
 +33 4 42981025
 sebastien.grall@h2x.com

Brochures & catalogues



