

# 8<sup>th</sup> Meeting of the ROPME Sea Area Hydrographic Commission (RSAHC)

National Report presentation by UKHO



# Main achievements during the year

- 3 NCs and 41 NEs – of which 26 INT
- Corresponding ENCs produced/revised
- 1 new and 1 revised bilateral arrangement



# Main challenges and/or obstructions

- Keeping up with regional developments
- Fast-paced port developments
- Face-to-face engagement opportunities

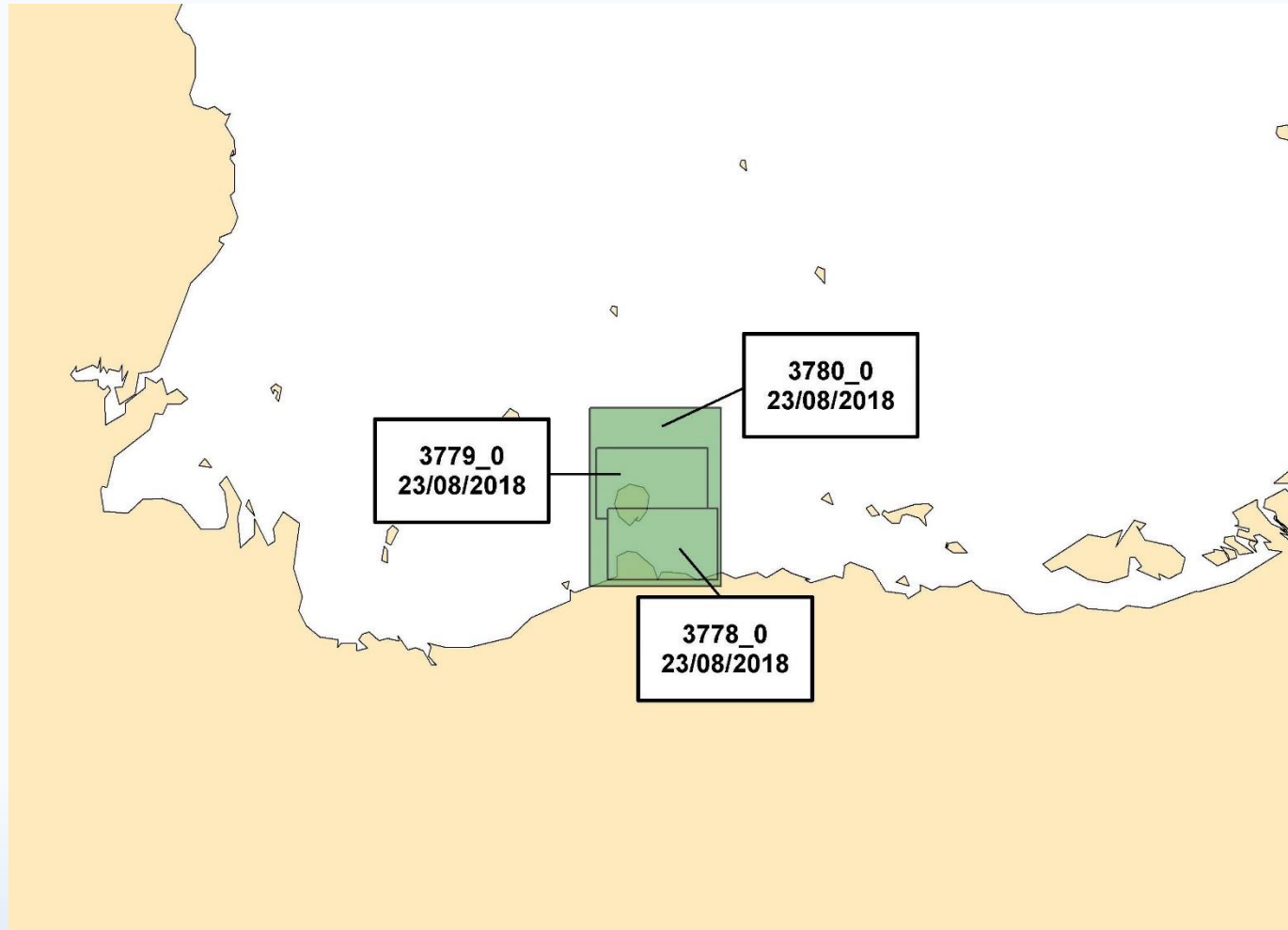


# Progress on surveys, charting and MSI

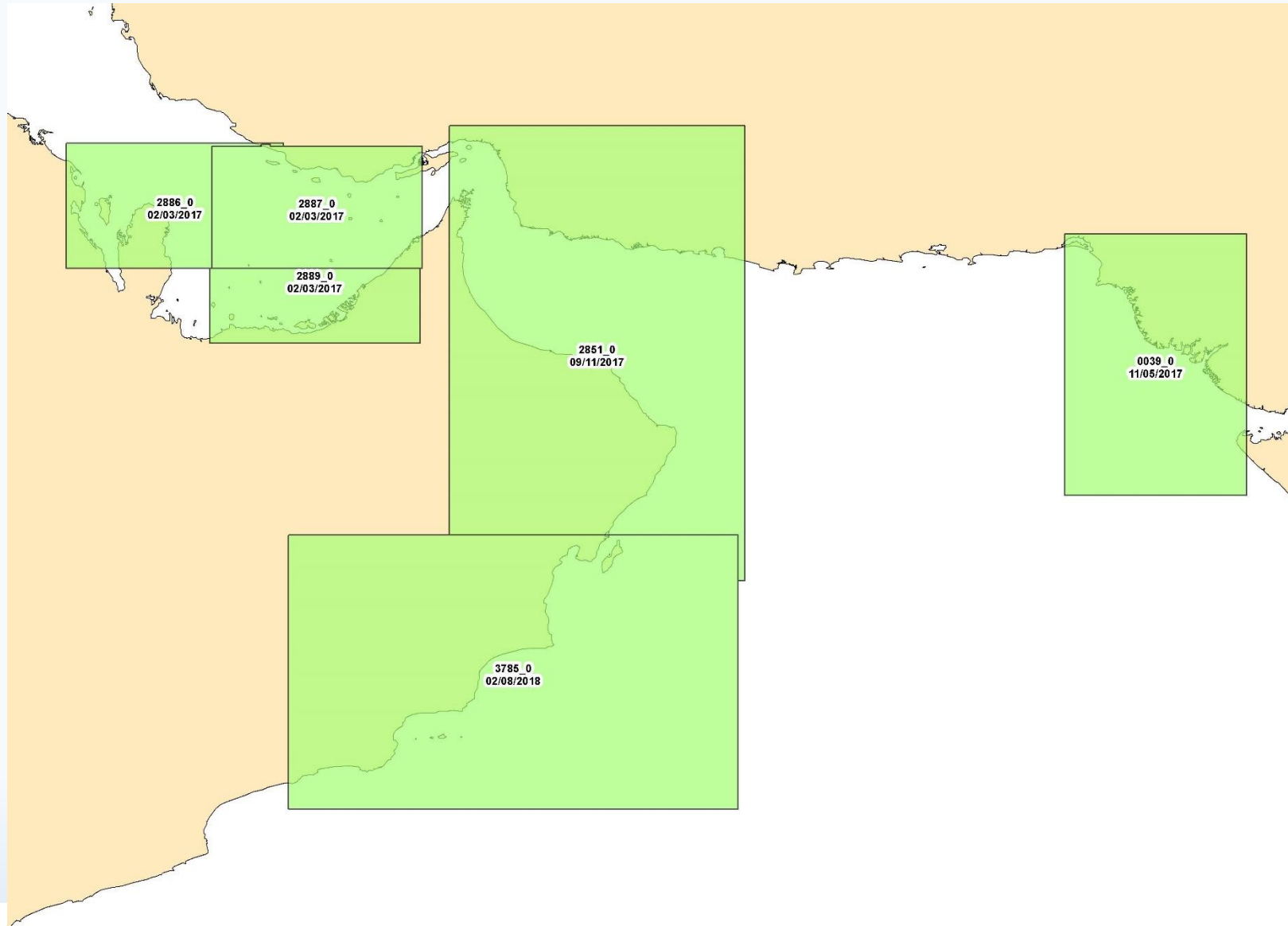
- Surveys: Pleased to have received 47 commercial surveys throughout the region.
- Charting: 50 products (NC/NEs/PAGs with 26 INT)
- MSI: NAVAREA coordination and training delivery



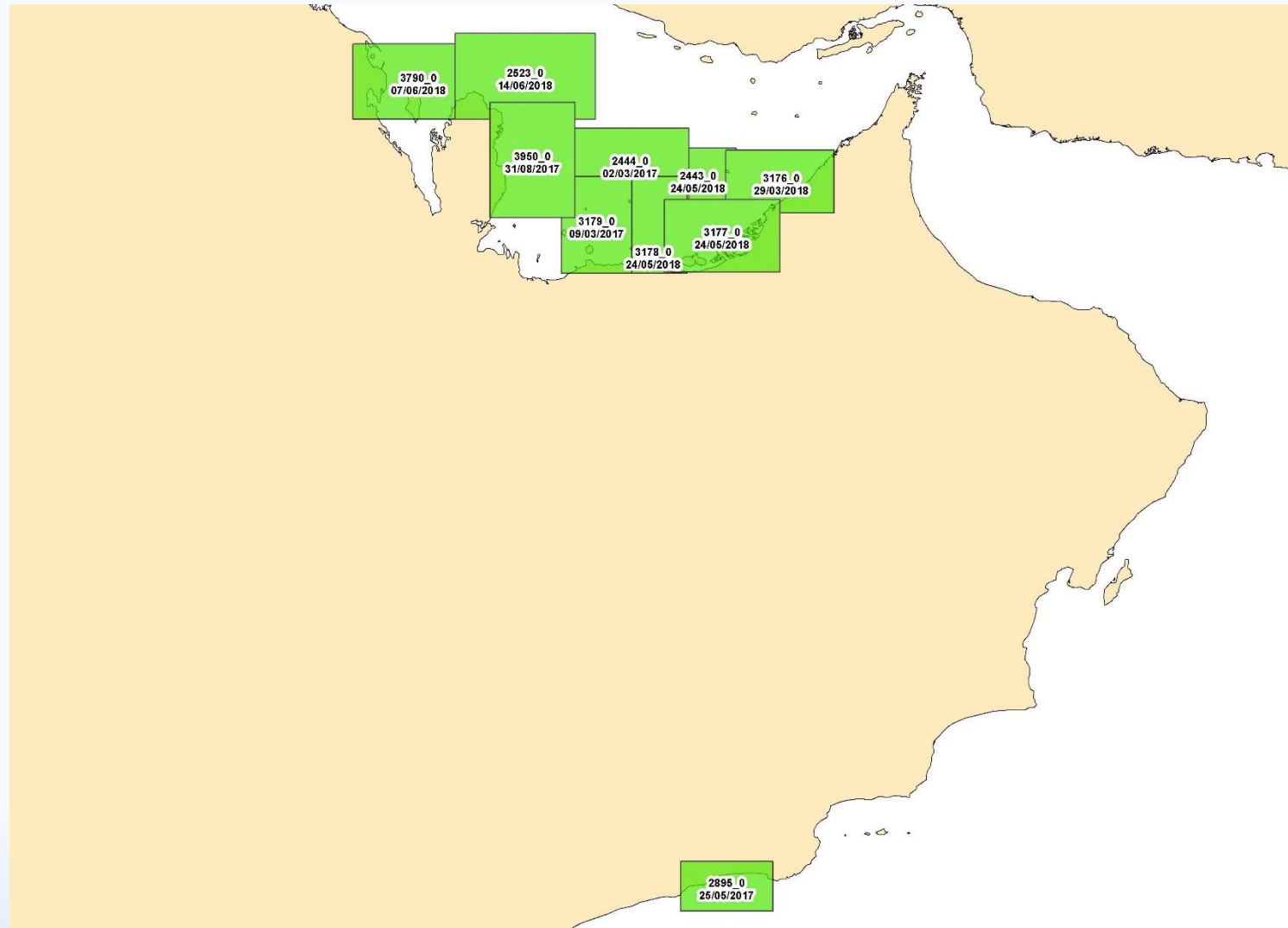
- New Charts since RSAHC7



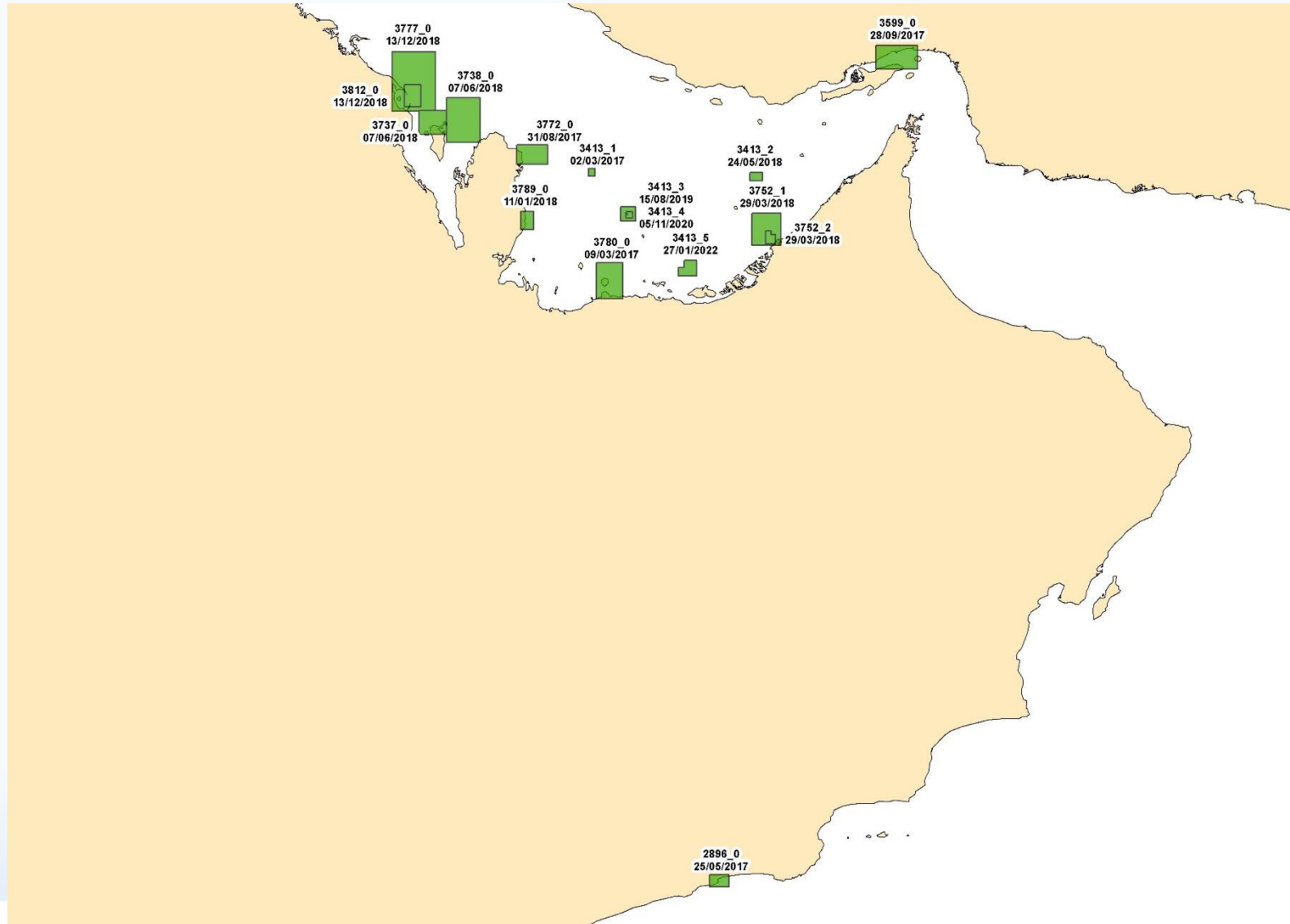
- Band 2 New Editions since RSAHC7



# Band 3 New Editions since RSAHC7

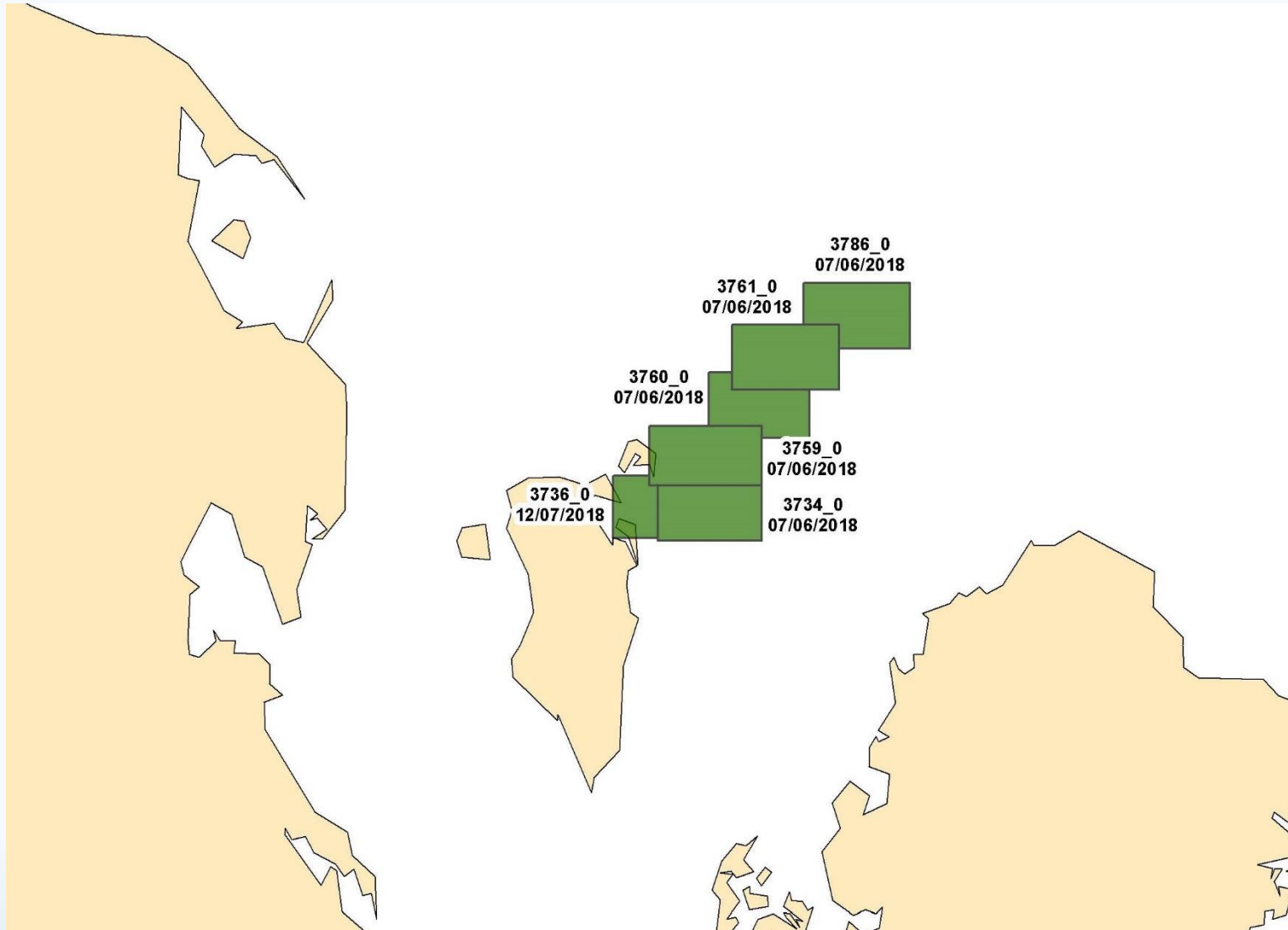


# Band 4 New Editions since RSAHC7





# Band 5 New Editions since RSAHC7



# Port Approach Guides (PAGs) since RSAHC7



# Capacity Building

- Cross regional support in NIOHC for RSAHC Capacity training



International Hydrographic Organization  
*Organisation Hydrographique Internationale*

ROPME Sea Area Hydrographic Commission (RSAHC)



# Progress on MSDI

- MGI involvement in the MACHC, SAIHC regions and NIOHC.
- UKHO part of MSDIWG.
- UK's promotion of MGIA capability (e.g. in Case studies, MEDIN).

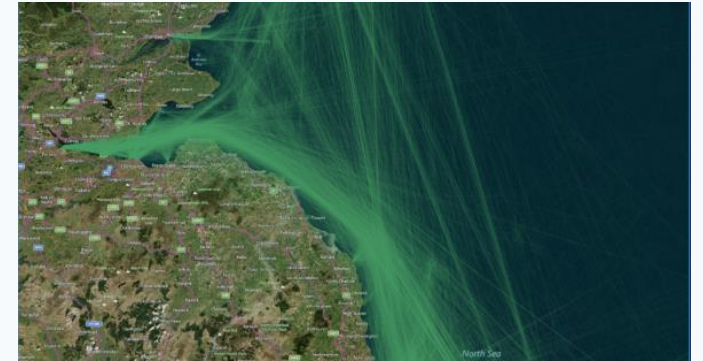


# Progress on MSDI

---

## Our MSDI Initiative

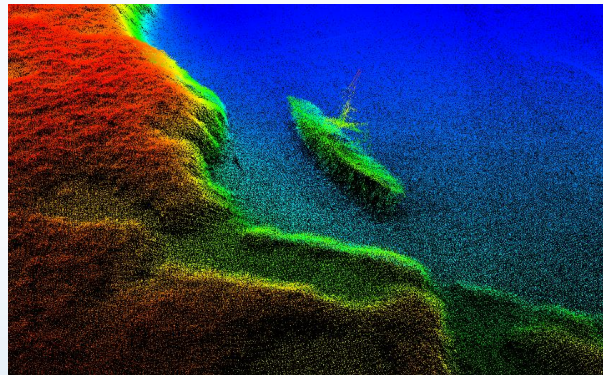
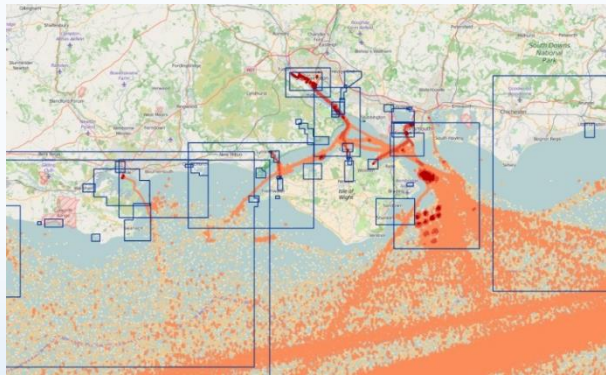
Creating a new information platform to support existing SOLAS products and services and wider “Blue Economy” transformation



# Progress on MSDI

## Sources of MSDI-suitable data include:

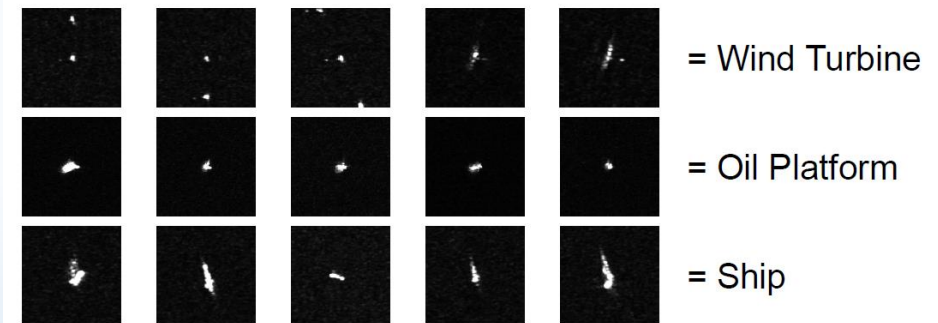
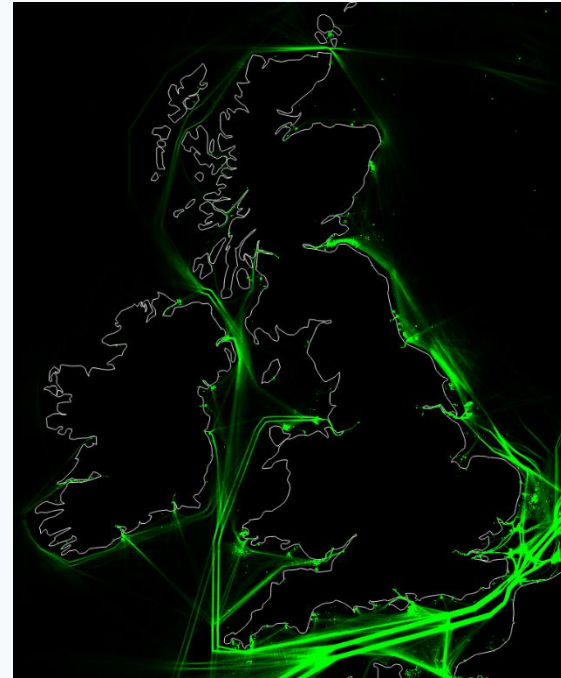
- Bathymetric surveying
- Coastline, Tidal and Oceanographic data
- Aids to Navigation and Geographical names
- Seafloor type, Obstructions and Wrecks
- Maritime information and regulations
- At-Sea and Shoreline constructions
- Practice and Exercise and/or Restricted areas



# Progress on MSDI

Using big data technology to handle complex data in new ways

- We are adding ever-greater richness and value to the data solutions we provide
- Using data in smarter and more efficient ways
- Deriving meaningful information from large data sets
- Predicting future behaviour from historical data sets
- Creating new innovative products and services



# Plans that affect the region

- 14 NC/NEs scheduled to be published by March 2019 (12 of which are INT)
- We continue to further develop bilateral arrangements to underpin support to the Mariner and marine user.
- Developing Hydro capability – Through training.





# Lessons learned to share

- To consider teleconference opportunities to keep momentum



# Success stories to share

- The expansion of carriage compliance for digital publications
- Improved capability through training delivery (NIPPON) and MSI.

