



United Kingdom  
Hydrographic Office

# UK National Report

10<sup>th</sup> Southern Africa and Islands Hydrographic  
Commission, Lisbon, 17-18 September 2013





United Kingdom  
Hydrographic Office

# Building on Success

## UK activity 2012-13

- Data gathering
- Chart production
- ENC Production
- Publications

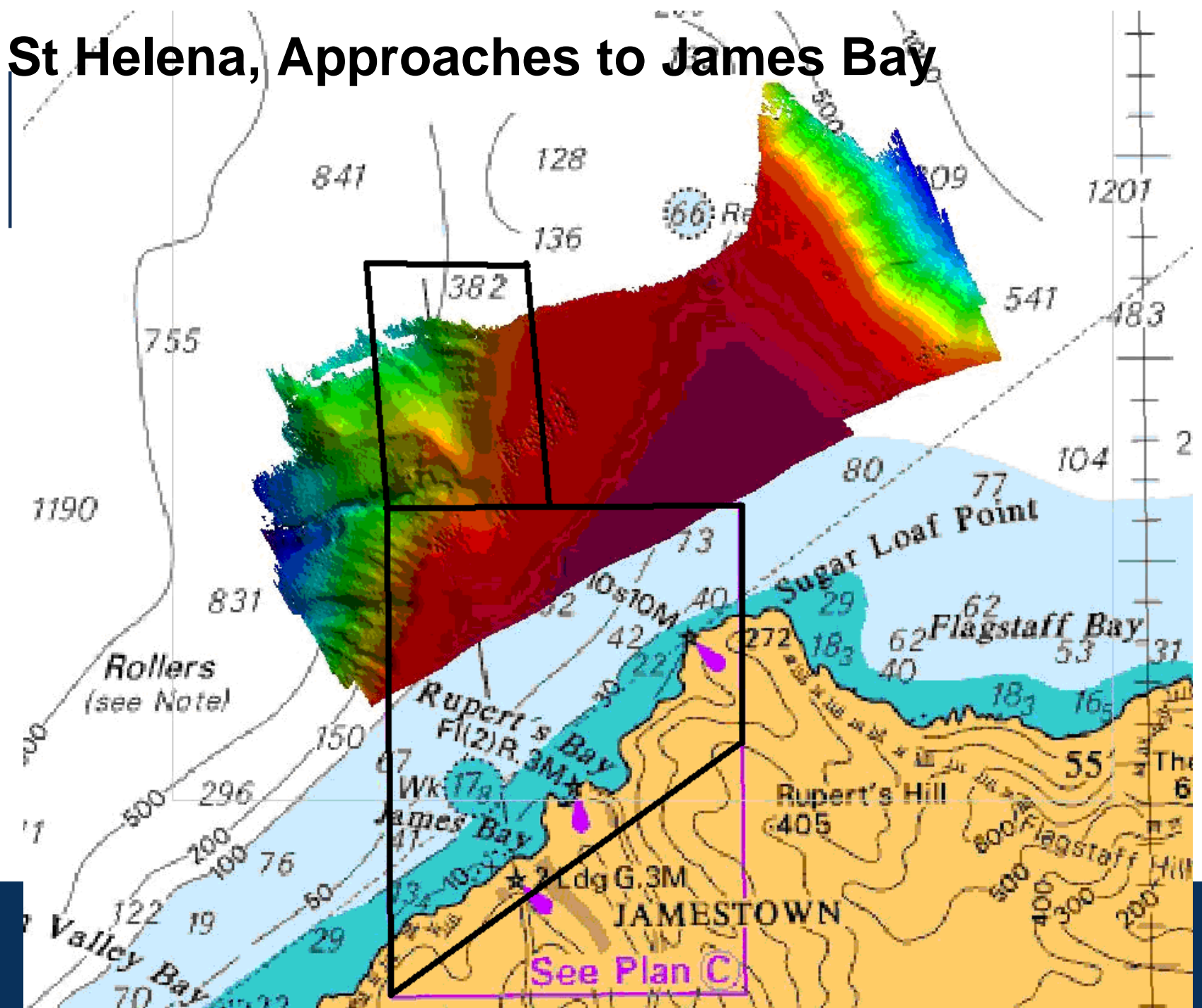


United Kingdom  
Hydrographic Office

# HMS Protector



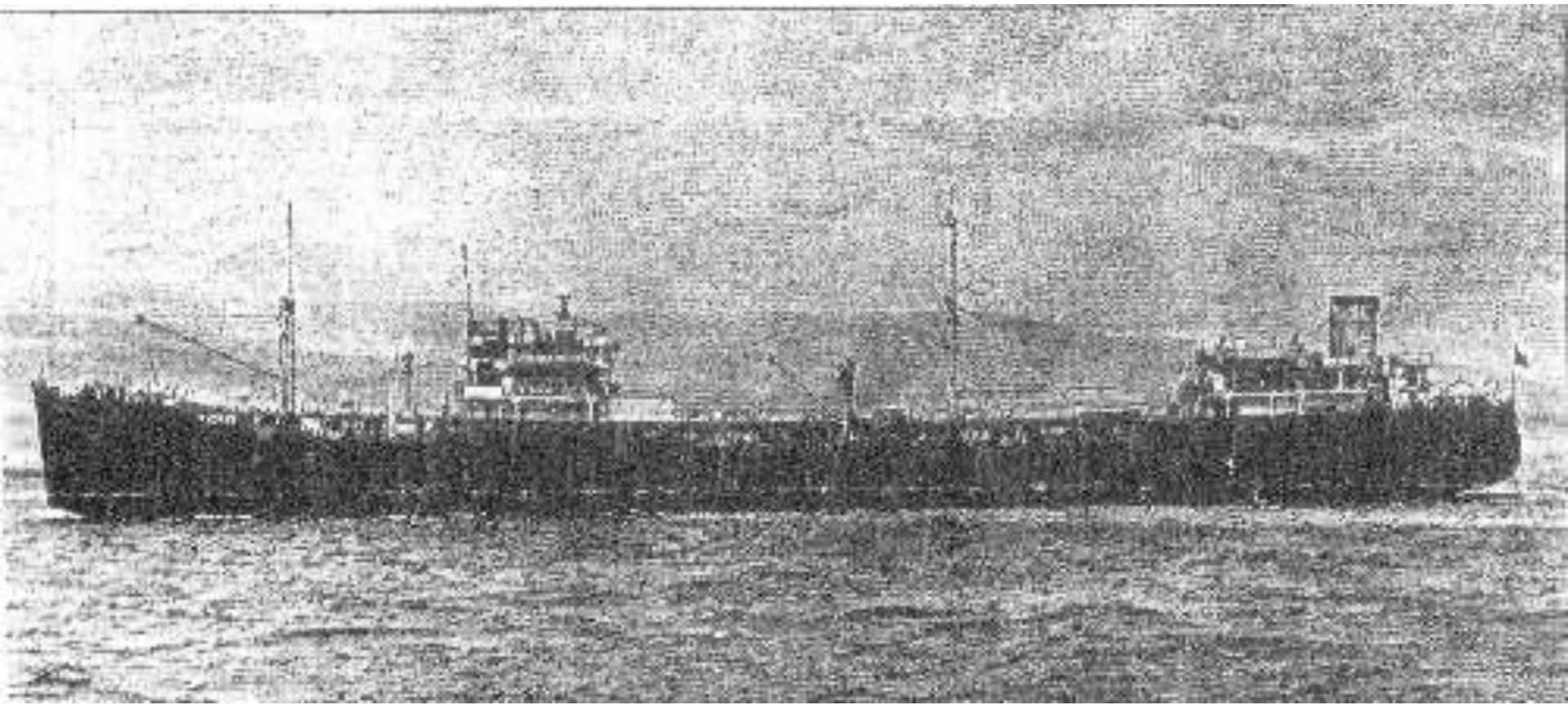
# St Helena, Approaches to James Bay

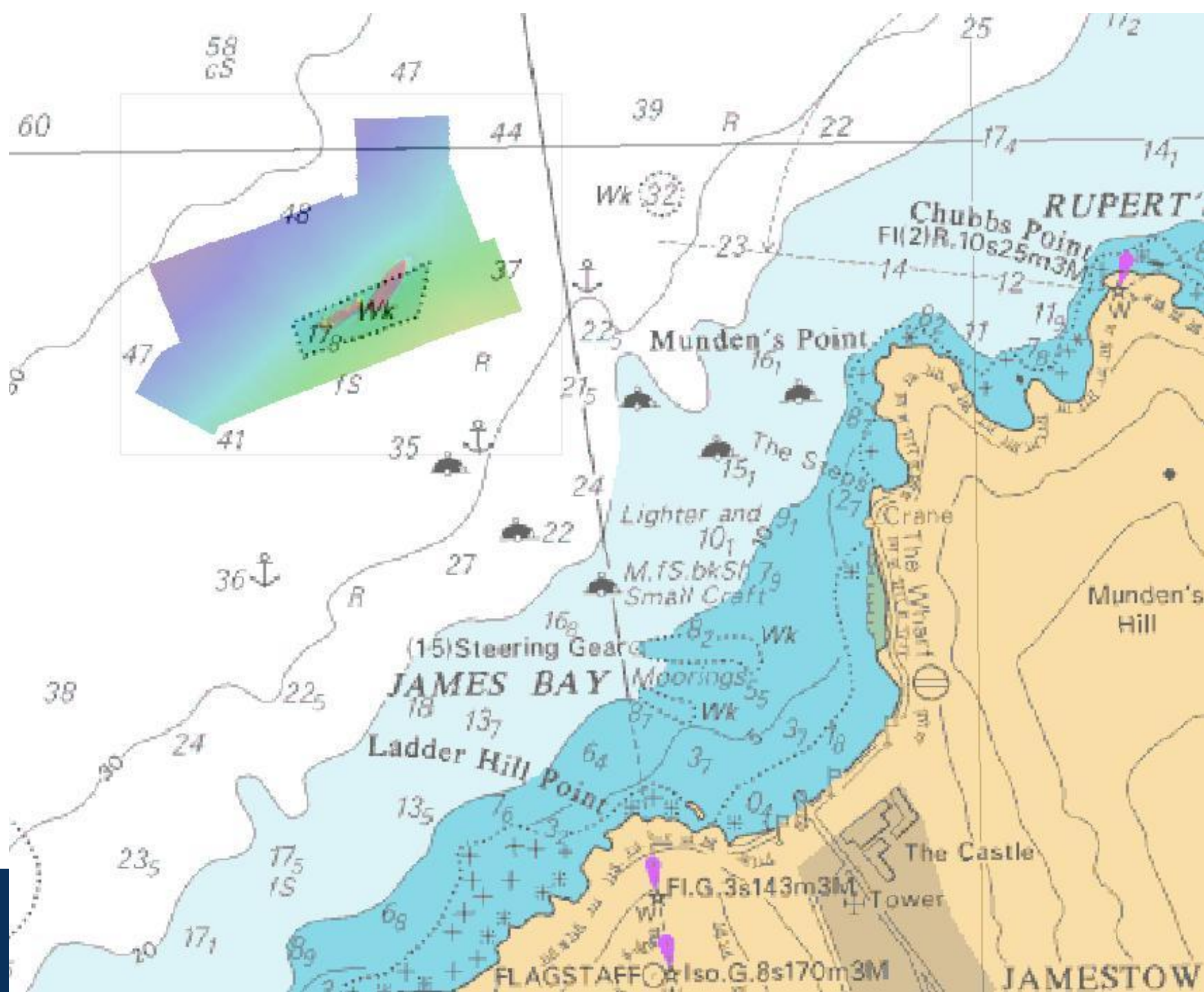




United Kingdom  
Hydrographic Office

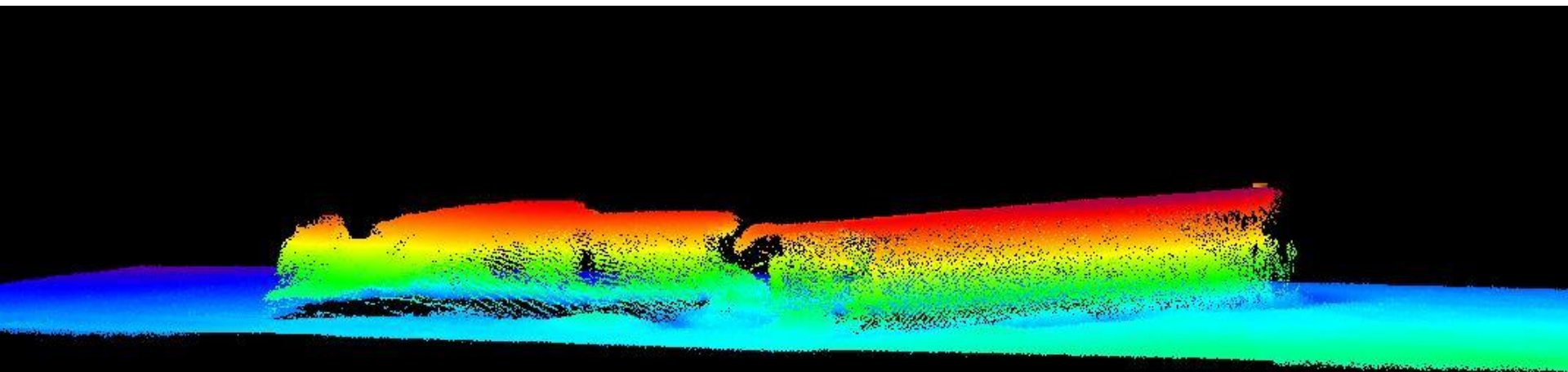
# RFA DARKDALE

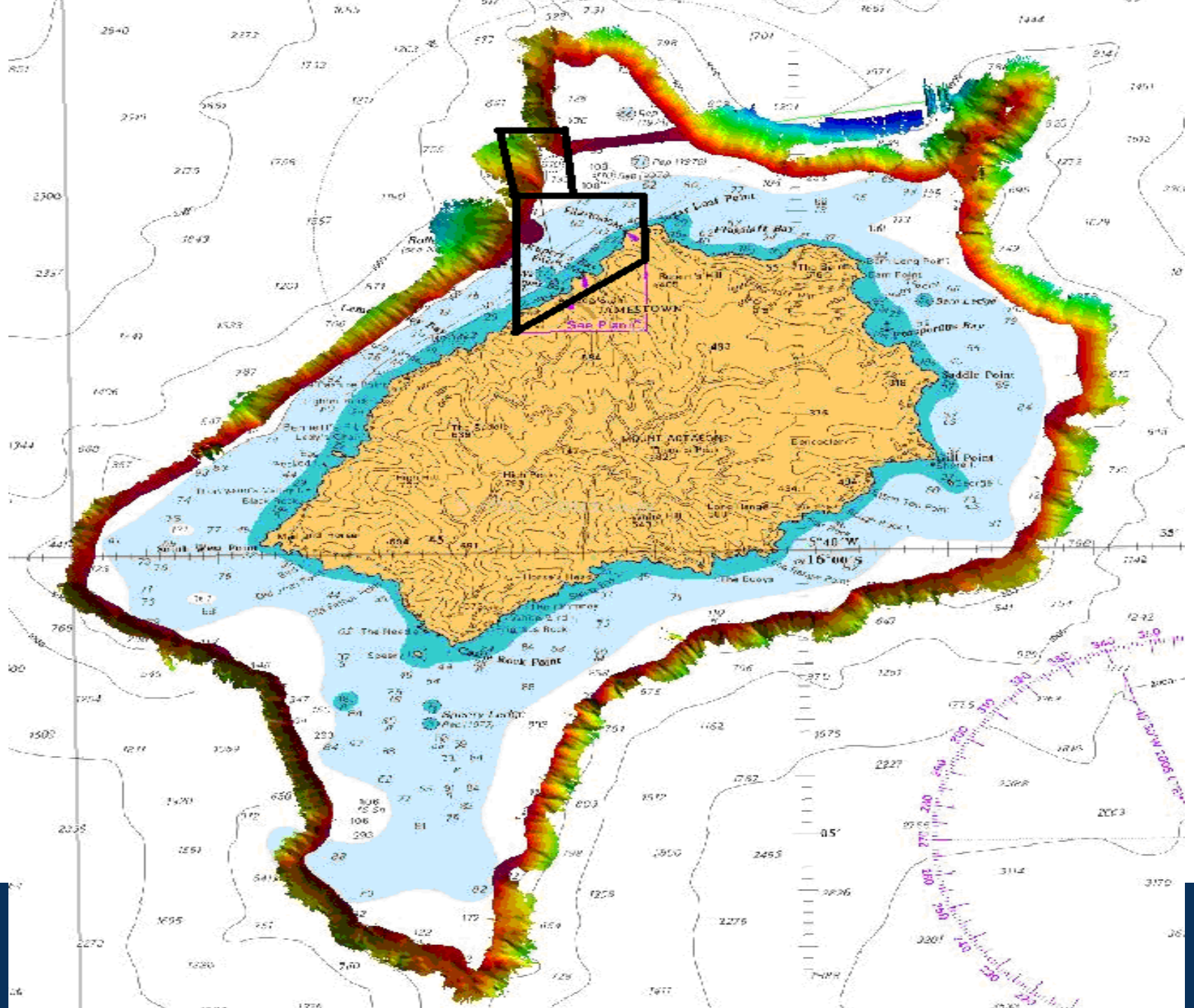






United Kingdom  
Hydrographic Office









United Kingdom  
Hydrographic Office

# Chart Production

13 New Edition charts, including 11 INT charts





United Kingdom  
Hydrographic Office

# ENC Production

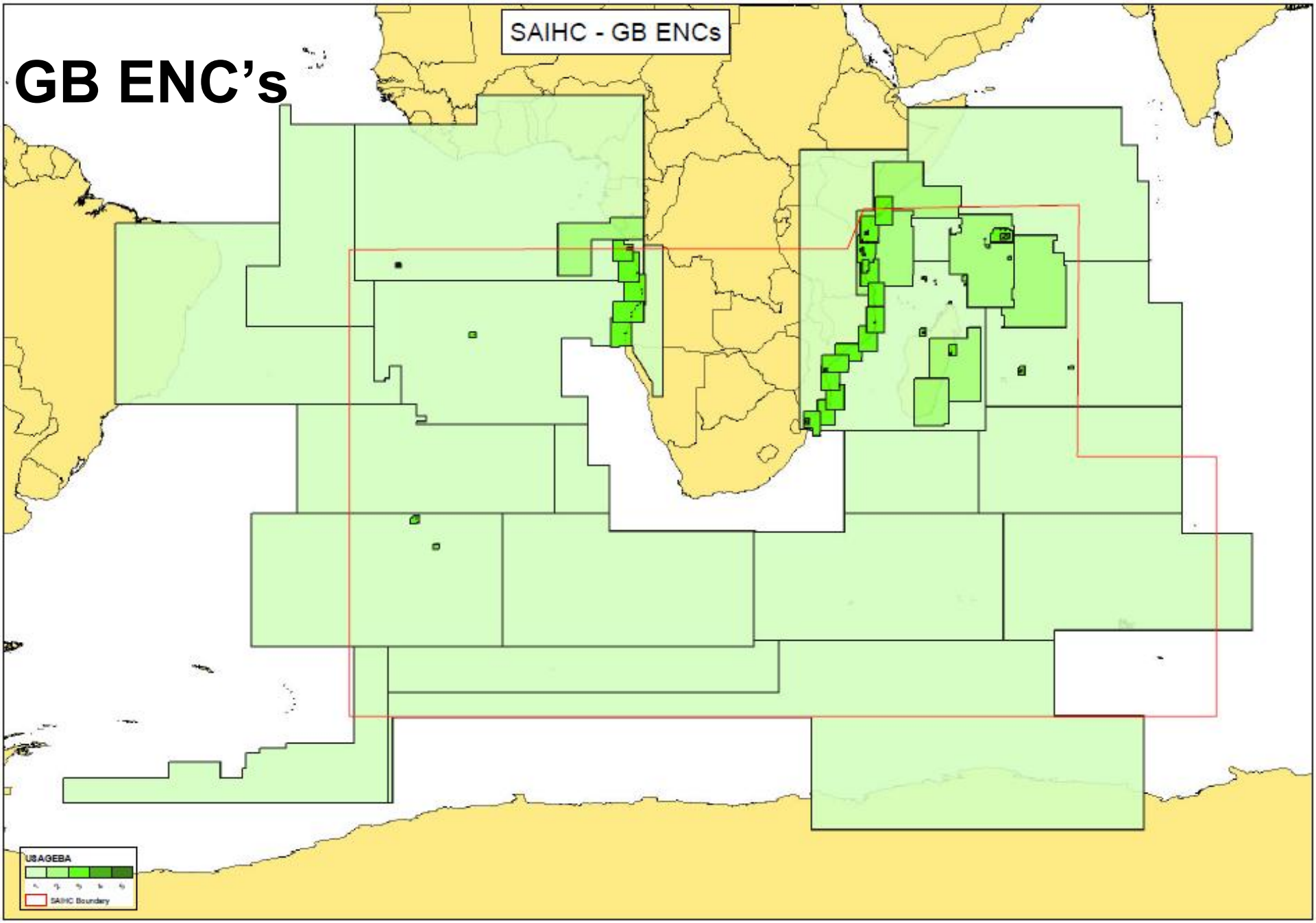
109 GB cells currently available in SAIHC region,  
coverage currently comprises:

- 16 Harbour
- 33 Approach (-1)
- 33 Coastal (+1)
- 7 General
- 20 Overview (+2)



SAIHC - GB ENC's

# GB ENC's





United Kingdom  
Hydrographic Office

# Publications

1 New Edition of Sailing Directions

– NP03 Africa Pilot Vol 3

May 2013





United Kingdom  
Hydrographic Office

# Looking Ahead

## Continuing UK activity 2013-14 and beyond

- Chart Production - 4 New Editions 12 months
- Publications - 2 New Editions Sailing Directions in 2013/14
- Continuing efforts to support local data gathering initiatives, and to link these into a broad programme of prioritised chart compilations and new editions.



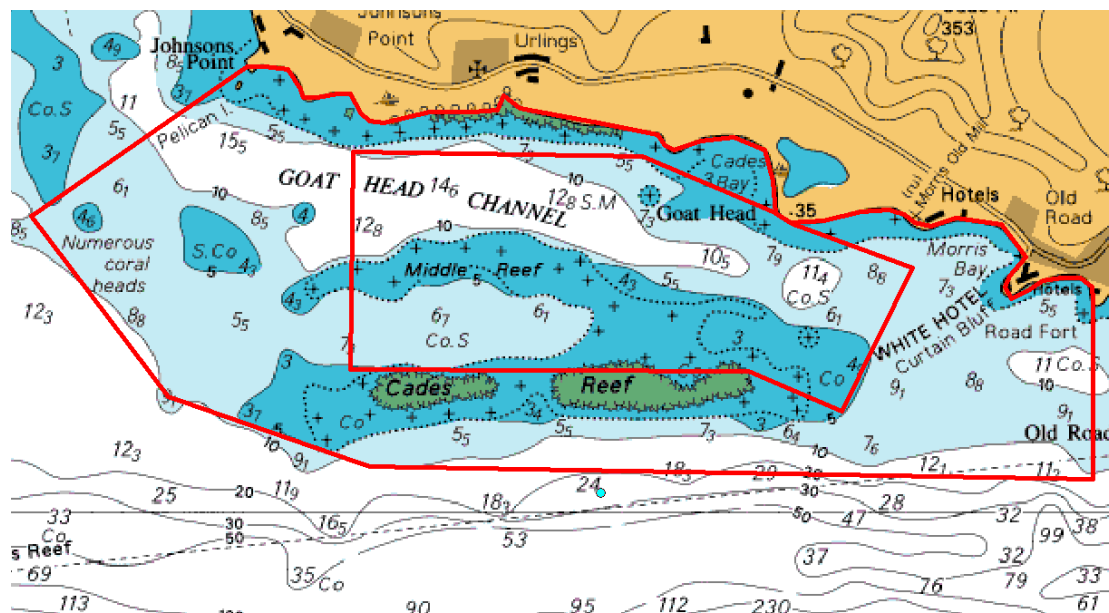


United Kingdom  
Hydrographic Office

# Satellite Derived Bathymetry

## Trial 2013

■ Antigua





United Kingdom  
Hydrographic Office

# Questions

**George Wallace**

Head of International Partnering (Middle East and Africa)