

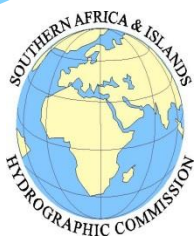
SAN HYDROGRAPHIC OFFICE
South African Hydrographic Office
Presentation to the
INT Chart Co-ordinating Committee Meeting

of the

10th SAIHC CONFERENCE

16 SEPTEMBER 2013

(PORTUGAL)

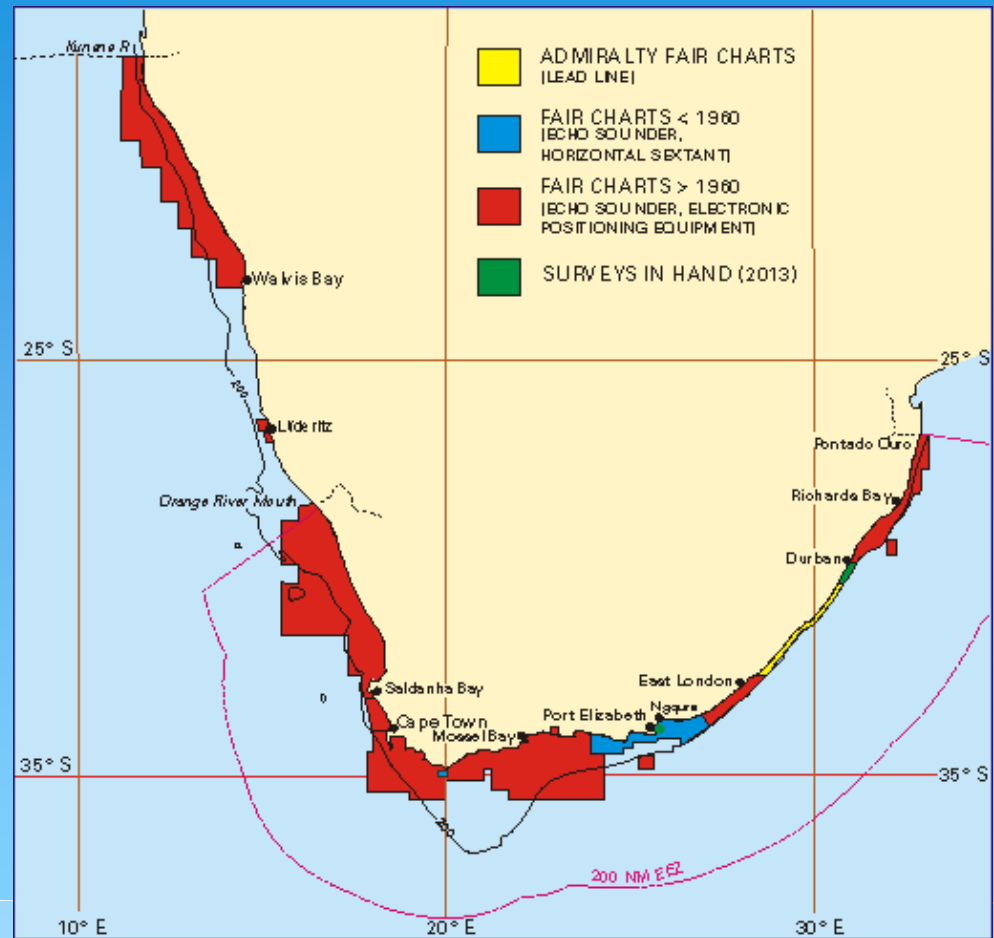


STATUS OF SURVEYING

Approaches to Durban

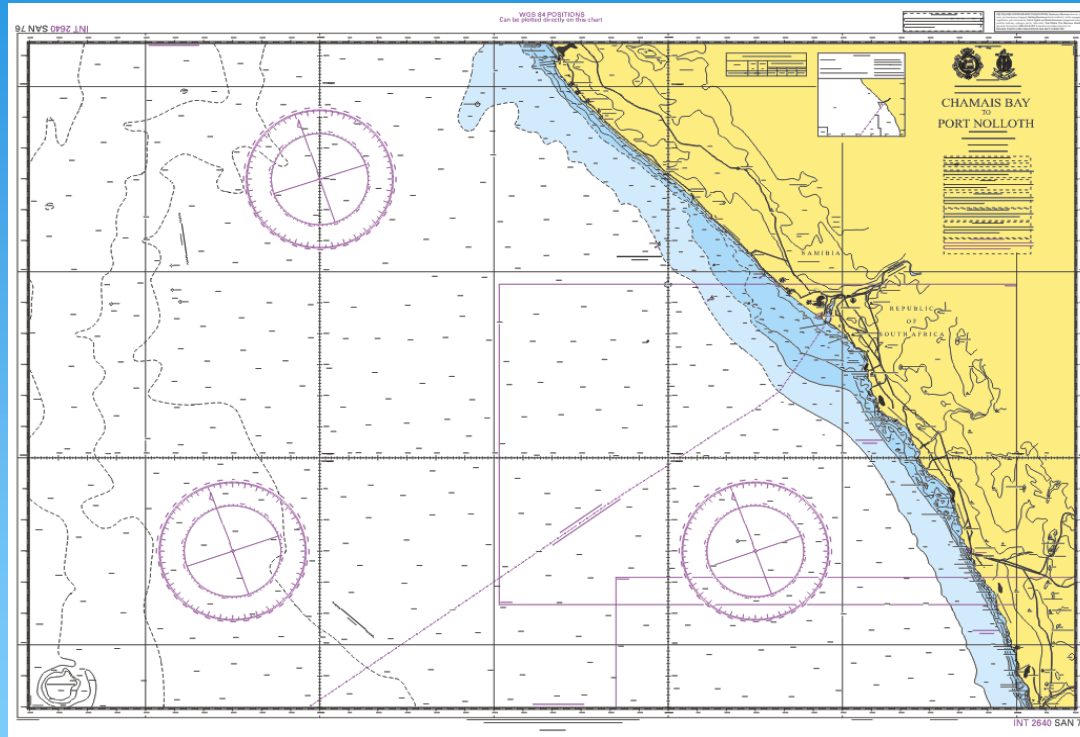
Approaches to Port Elizabeth

(multibeam)



INT PAPER CHARTING

Summary of Achievements since SAIHC 9 Meeting

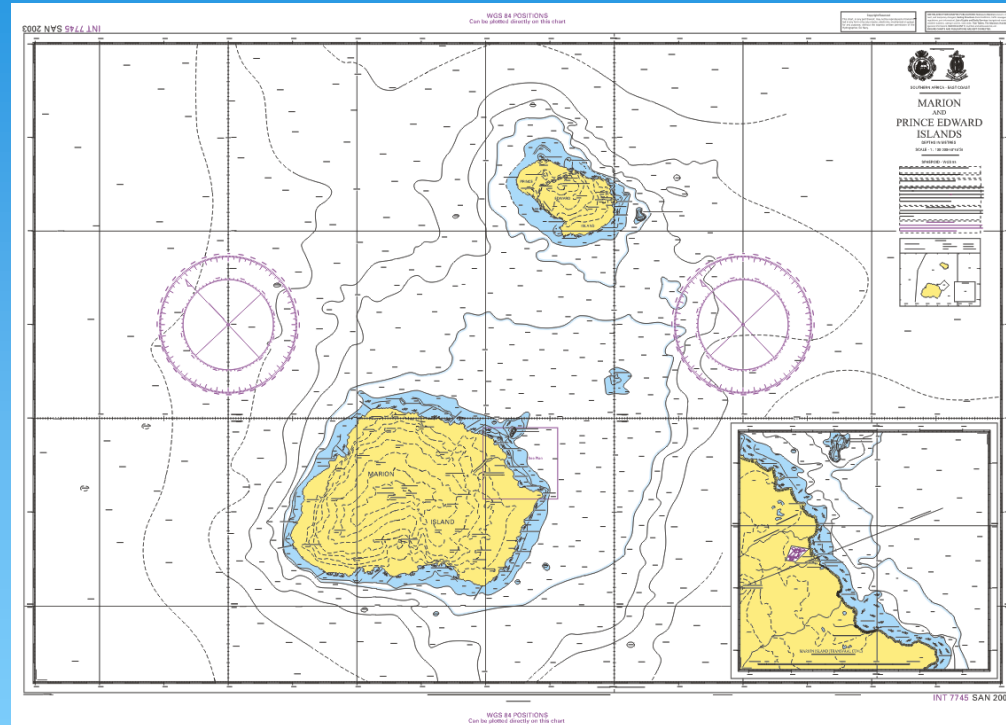


Publication of new edition of INT 2640-SAN 76 in August 2013



INT PAPER CHARTING

Summary of Achievements since SAIHC 9 Meeting



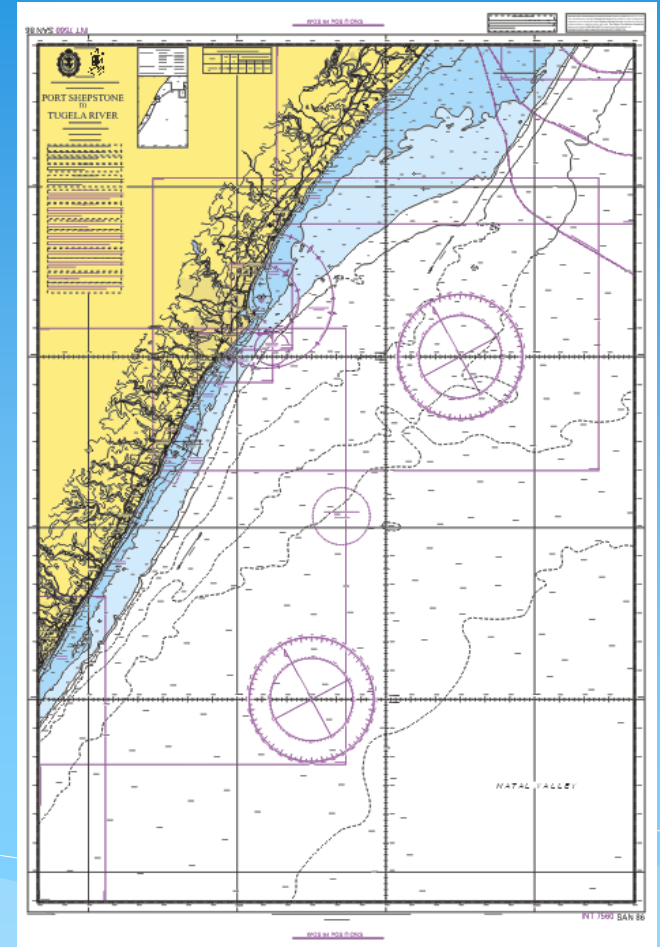
Publication of new chart INT 7745- SAN 2003 in July 2013



INT PAPER CHARTING

Summary of Achievements since SAIHC 9 Meeting

Publication of new chart
INT 7560-SAN 86
in May 2013

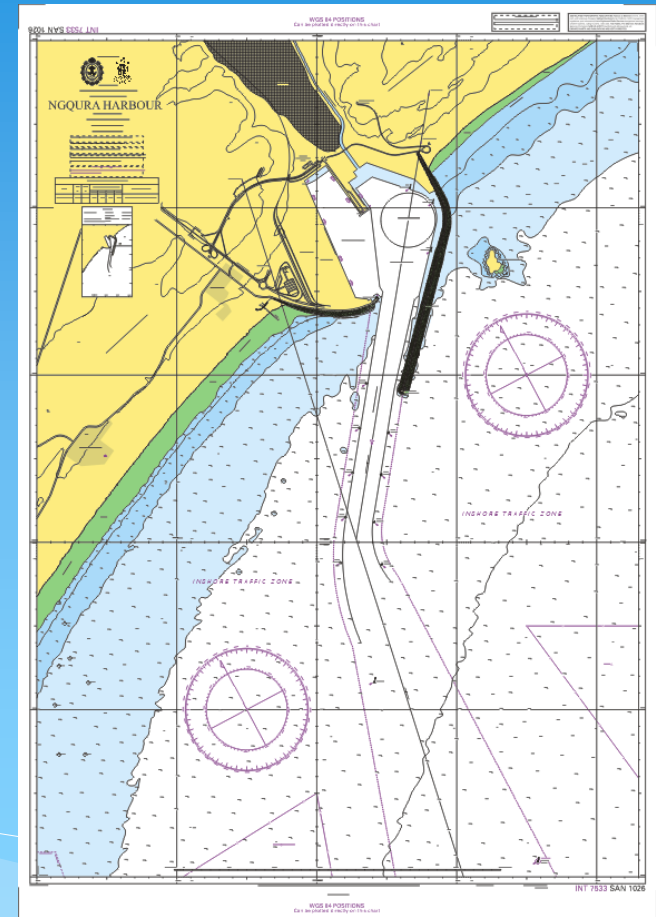


INT PAPER CHARTING - SINCE SAIHC 9

Publication of new edition of
INT 7533-SAN 1026
in Nov 2012

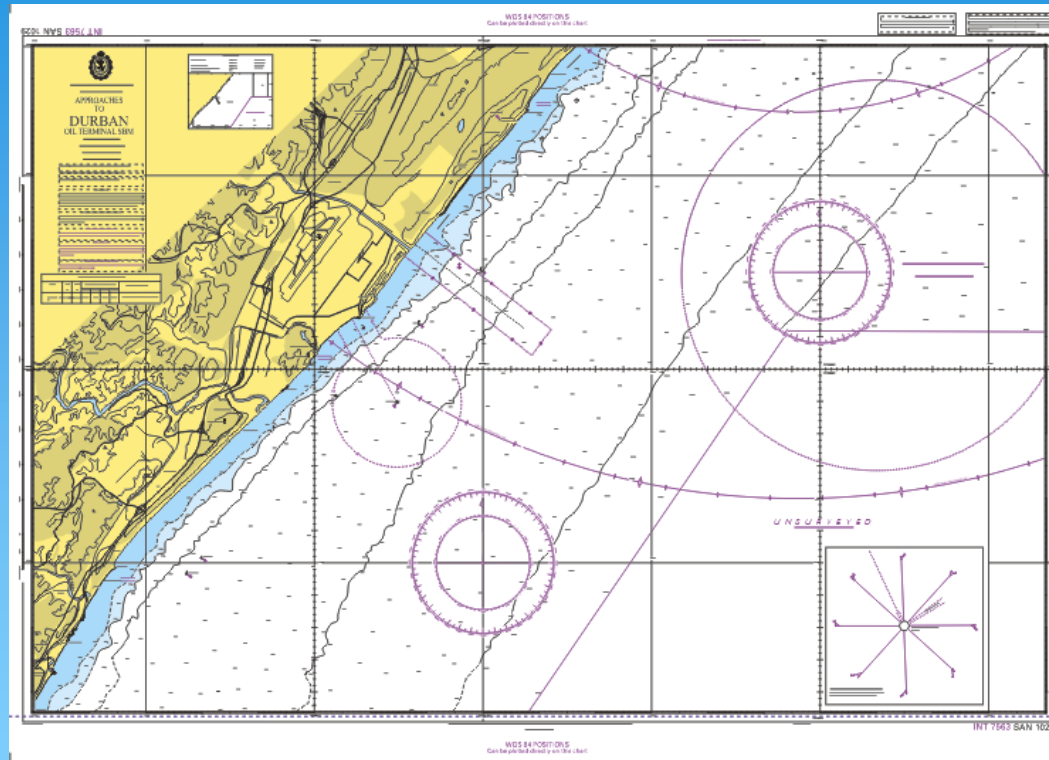


Ngqura Harbour



INT PAPER CHARTING IN PROGRESS

New INT chart - INT563-SAN 1029

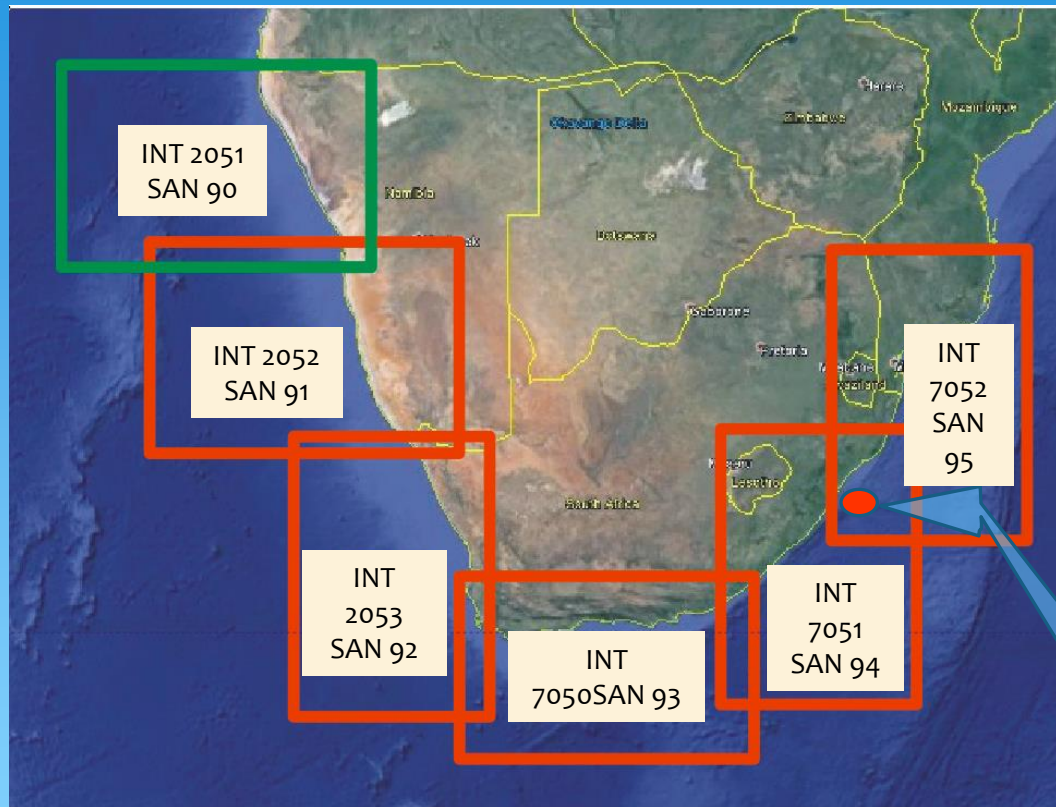


Awaiting multibeam survey from SAS Protea to complete the waterwork.



INT CHARTING – ZA OUTSTANDING CHARTS

39 (87%) INT Charts Published as at 2103



 Published

 Planned



SUMMARY of INT AND NATIONAL PAPER CHARTING

A. NAVIGATIONAL CHARTS MAINTAINED BY NOTICES

| | | |
|--|---------------------------|----|
| INT CHARTS (39 in total) | Small Scale (1: 600T >) | 3 |
| | Medium Scale (100T- 300T) | 17 |
| | Large Scale (<100T) | 18 |
| | Islands and Antarctica | 1 |
| NATIONAL CHARTS (21 in total) | Small Scale (>1: 600T) | 5 |
| | Medium Scale (100T- 300T) | 1 |
| | Large Scale (<100T) | 3 |
| | Small Craft | 6 |
| | PEXA | 4 |
| | Islands and Antarctica | 2 |

B. OTHER CHARTS NOT MAINTAINED BY NOTICES

| | |
|-----------------|----|
| Plotting Sheets | 20 |
| Small Craft | 6 |
| Inland Dams | 2 |
| PEXA charts | 3 |
| Training | 1 |
| Information | 1 |

C. PLANNED CHARTS

| | |
|-----------------|---|
| INT Small Scale | 5 |
| INT Large Scale | 1 |
| Inland Waters | 2 |
| Small craft | 1 |



TOTAL PUBLISHED CHARTS : 93 (91.2%)

TOTAL ENVISAGED CHARTS : 102

ENC CHARTING – CURRENT STATUS

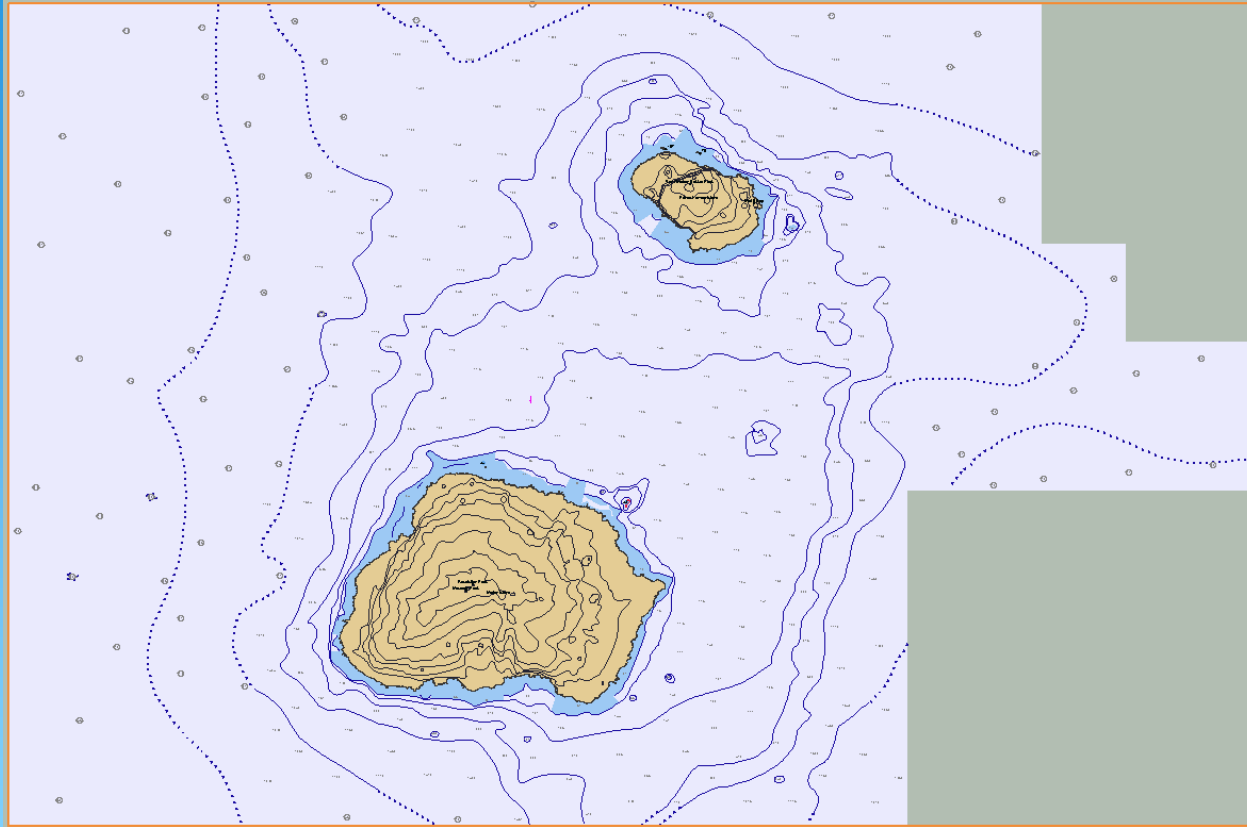
| Usage Band | Total Planned | Total Produced | % Coverage Available |
|--------------|---------------|----------------|----------------------|
| Overview | 5 | 5 | 100 |
| General | 9 | 9 | 100 |
| Coastal | 19 | 19 | 100 |
| Approaches | 13 | 12 | 92.3 |
| Harbour | 11 | 11 | 100 |
| Berthing | 0 | 0 | 0 |
| Total | 57 | 56 | 98.3% |

The remaining ENC **ZA400200** *Marion Island – Transvaal Cove* is scheduled for publication in November 2013.



ENC CHARTING –SINCE SAIHC 9

New ENC ZA300200 *Marion and Prince Edward Islands*



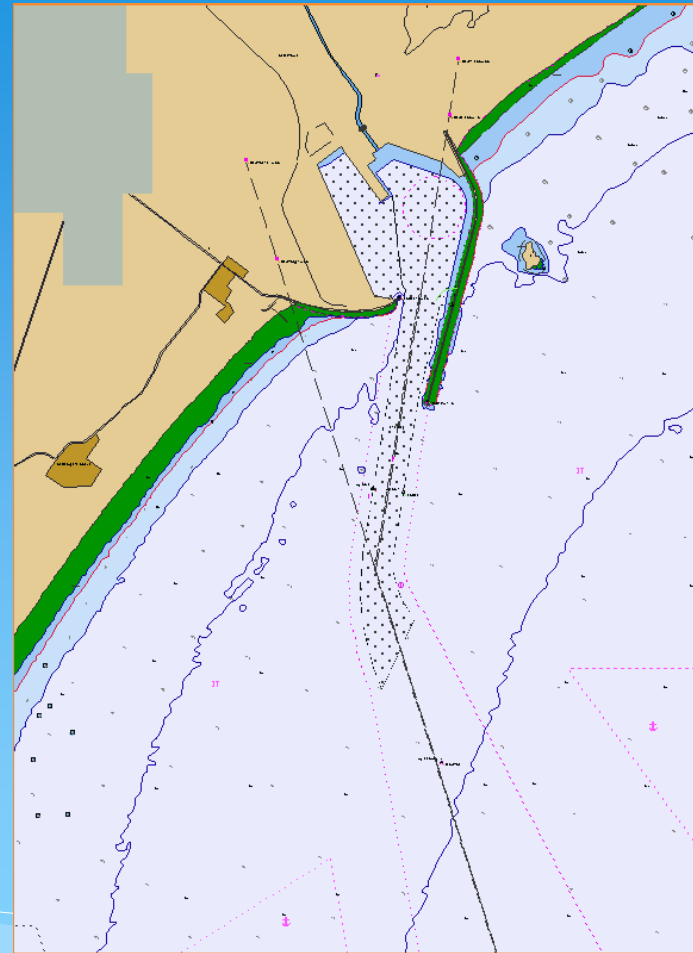
Published in Aug 2013.



ENC CHARTING - SINCE SAIHC 9

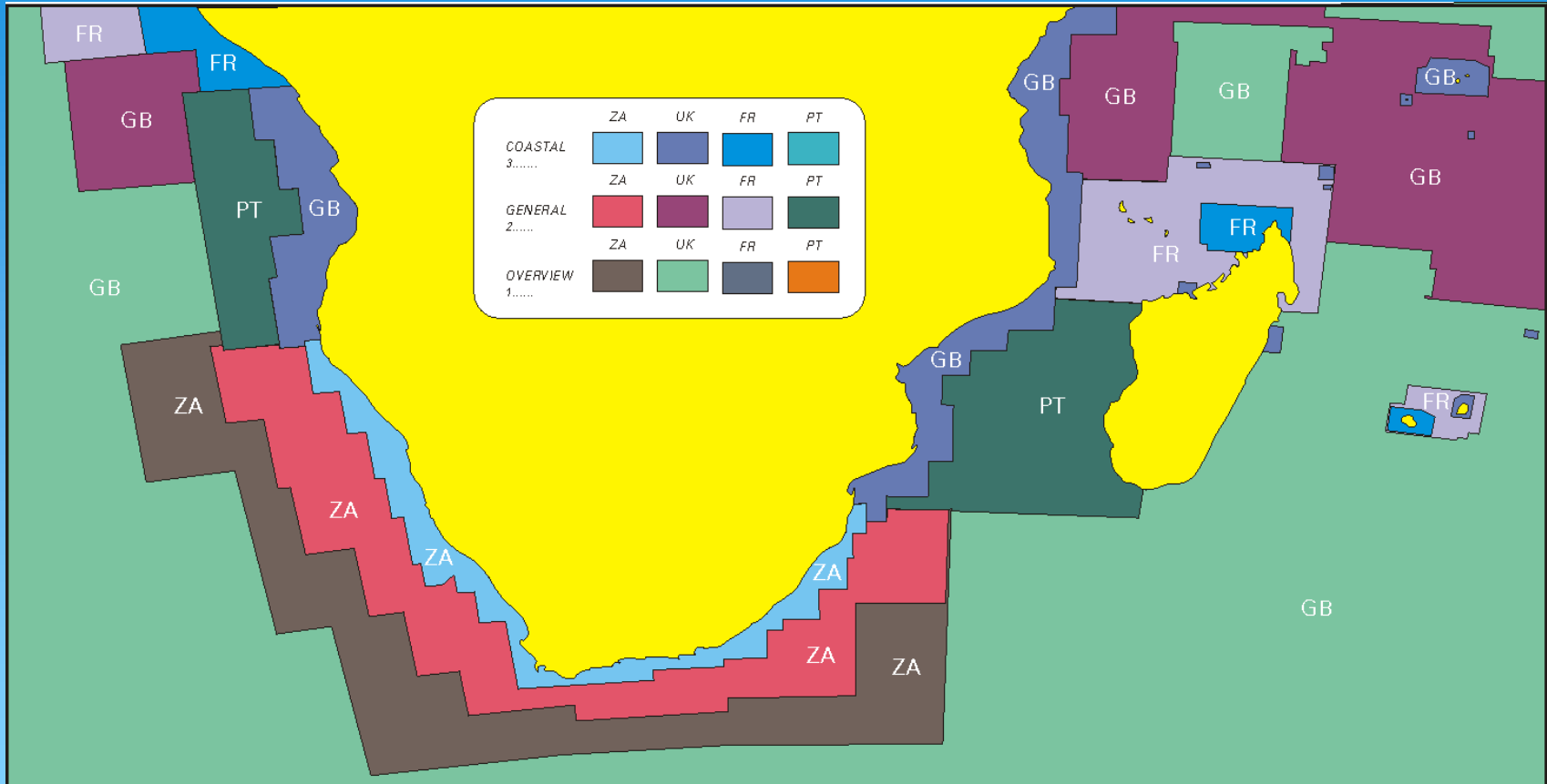
New edition of
ENC ZA500125
Ngqura Harbour

Published in April 2013.



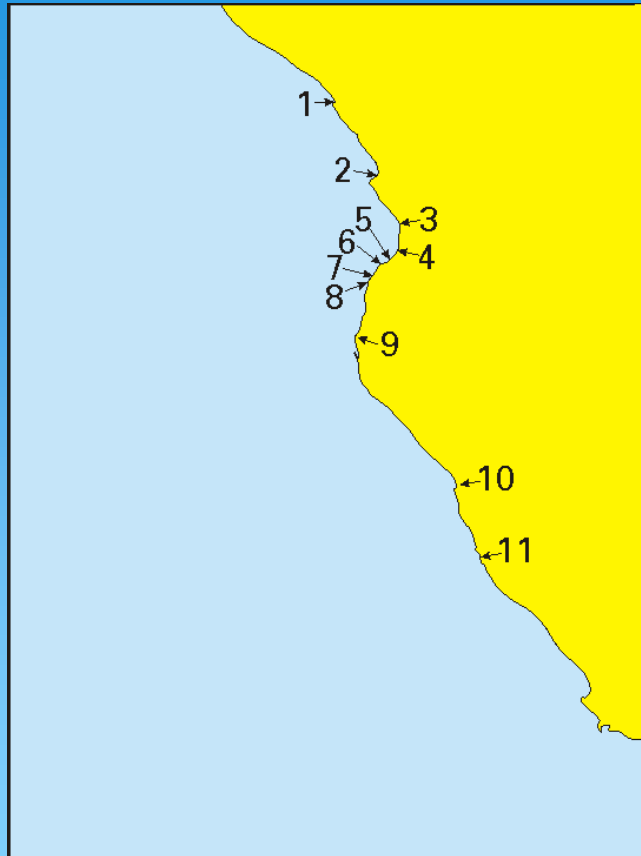
ENC CHARTING – CURRENT REGIONAL STATUS

Coastal, General and Overview Coverage as at Sep 2013



ENC CHARTING – CURRENT REGIONAL STATUS

Harbour and Approaches Coverage as at Sep 2013



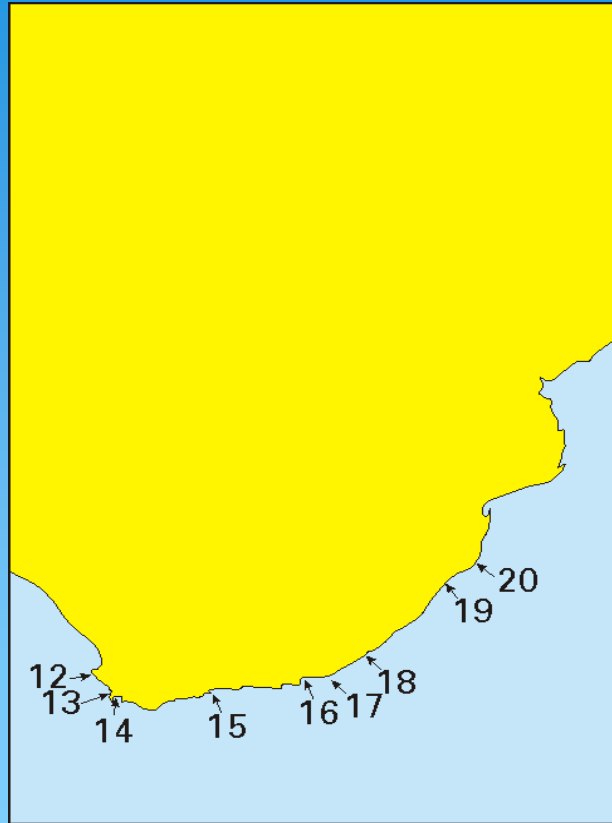
- | | | |
|----|-----------|--|
| 1 | GB400658 | Angola and Congo (Democratic Republic) - Entrance to River Congo |
| | GB400657 | Ponta da Cafumbila to Matadi |
| | GB500659 | Angola - Port of Soyo and Approaches |
| 2 | GB43448F | Africa- West Coast- Angola- Porto de Luanda |
| 3 | GB41215D | Africa - West Coast - Angola - Porto Amboim |
| 4 | GB41215G | Africa - West Coast - Angola - Gunza-Kabolo (Novo Redondo) |
| 5 | GB41215 C | Africa - West Coast - Angola - Baia Farta |
| 6 | GB41215F | Africa - West Coast Angola Baia de Santa Maria |
| 7 | GB41215H | Africa - West Coast - Angola - Enseada do Cuio |
| 8 | GB41215A | Africa - West Coast - Angola - Baia de Santa Marta |
| 9 | GB41215B | Africa - West Coast - Angola - Porto Alexandre |
| 10 | ZA4N0010 | Approaches to Walvis Bay |
| | ZA5N0010 | Walvis Bay Harbour |
| 11 | ZA5N0020 | Lüderitz Harbour |
| | ZA4N0020 | Approaches to Lüderitz |



GB 11 ENCs ZA 4 ENCs

ENC CHARTING – CURRENT REGIONAL STATUS

Harbour and Approaches Coverage as at Sep 2013



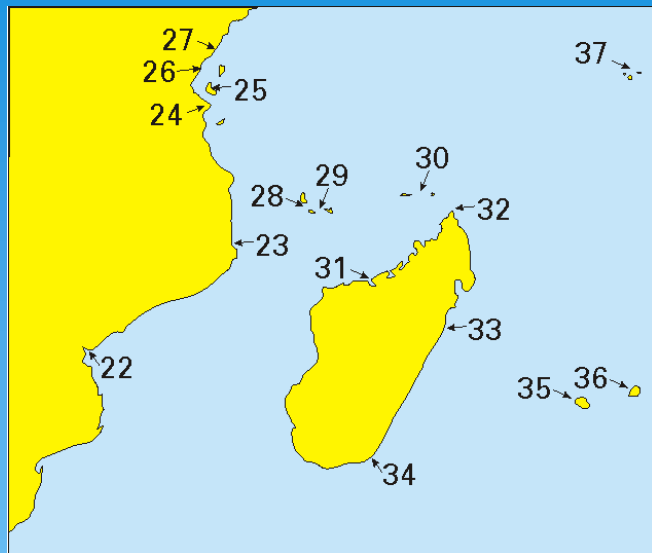
- | | | |
|----|----------|------------------------------|
| 12 | ZA500040 | Saldanha Bay |
| | ZA400040 | Approaches to Saldanha Bay |
| 13 | ZA500050 | Table Bay |
| | ZA400050 | Approaches to Table Bay |
| 14 | ZA500080 | Simon's Bay |
| | ZA400070 | False Bay |
| 15 | ZA500090 | Mosselbaai Harbour |
| | ZA400090 | Mosselbaai |
| 16 | ZA500120 | Port Elizabeth Harbour |
| | ZA400120 | Approaches to Port Elizabeth |
| | ZA500125 | Ngqura Harbour |
| 17 | ZA400130 | Bird Island Passage |
| 18 | ZA500140 | East London Harbour |
| | ZA400140 | Approaches to East London |
| 19 | ZA400150 | Durban Oil Terminal SMB |
| | ZA500160 | Durban Harbour |
| | ZA400160 | Approaches to Durban |
| 20 | ZA500170 | Richards Bay Harbour |
| | ZA400170 | Approaches to Richards Bay |

ZA 19 ENCs



ENC CHARTING – CURRENT REGIONAL STATUS

Harbour and Approaches Coverage as at Sep 2013



- 37 **GB400742** INDIAN OCEAN - SEYCHELLES GROUP - MAHE PRASLIN AND ADJACENT ISLANDS
GB55301A Port Victoria and Approaches
GB50724I Indian Ocean - Seychelles Group - Grand' Anse
GB50724H Indian Ocean - Seychelles Group - Baie Sainte Anne to La Digue

GB 26

FR 14

- 21 **GB400644** Baia de Maputo
GB400646 Porto de Maputo
- 22 **GB502758** Africa - East Coast - Mozambique - Porto da Beira
GB401003 Approaches to Porto da Beira
- 23 **GB400649** Nacala
- 24 **GB442320** Approaches to Dar Es Salaam
GB54232A Dar es Salaam
- 25 **GB54231A** Africa - East Coast Tanzania - Zanzibar Island - Zanzibar Harbour
GB442310 Approaches to Zanzibar
- 26 **GB50663A** Africa - East Coast - Tanzania - Tanga
GB442210 Approaches to Tanga
- 27 **GB500666** Africa - East Coast - Port Mombasa including Port Kilindini and Port Reitz
GB442220 Approaches to Port Mombasa
- 28 **FR476790** Océan Indien - Archipel des Comores Grande Comore and Mohéli islands
FR476780 Archipel des Comores - Anjouan Island
- 29 **FR574920** Archipel des Comores Ile de Mayotte - Partie Nord
FR574930 Archipel des Comores Ile de Mayotte - Partie Est
- 30 **GB40718C** Aldabra Island - Ile Picard
GB40718D Cosmoledo Group
GB40718G Astove
- 31 **GB400701** Madagascar - North Coast - Baie de Bombetoke
- 32 **FR576810** North-east coast of Madagascar - Antsiranana Bay
GB401116 Madagascar - North East Coast - Baie de Diego-Suarez
- 33 **GB400688** Tamatave
- 34 **FR56054A** Fort-Dauphin
FR460540 Baie de Fort-Dauphin and approaches to Ehoala
- 35 **FR471830** La Réunion - Northern part
FR472220 La Réunion - Eastern part Pointe Marcellin to Sainte Rose
FR473280 La Réunion - Southern part Pointe de Bretagne to Pointe de Langevin
FR57183C Port Réunion (Pointe des Galets) - East harbour
FR57183B Port Réunion (Pointe des Galets) - West harbour
FR57183A La Réunion - Saint-Gilles les Bains harbour
FR57328A Saint-Pierre harbour
- 36 **GB55321B** Indian Ocean - Mauritius - Port Louis
GB45321A Indian Ocean - Mauritius - Approaches to Port Louis
GB55321C Mauritius - Grande Riviere Noire Bay



PAPER and ENC CHARTING IN SAIHC REGION

Review of the INT Charting Schema S11
Part B Area H

Introduce into the Schema a similar
schema for ENCs into S11Part B Area H

Add any schema Diagrams where needed.