

Kongsberg Maritime – Subsea

BRING CLARITY TO THE WORLD BELOW



SAIHC, Maputo 2014

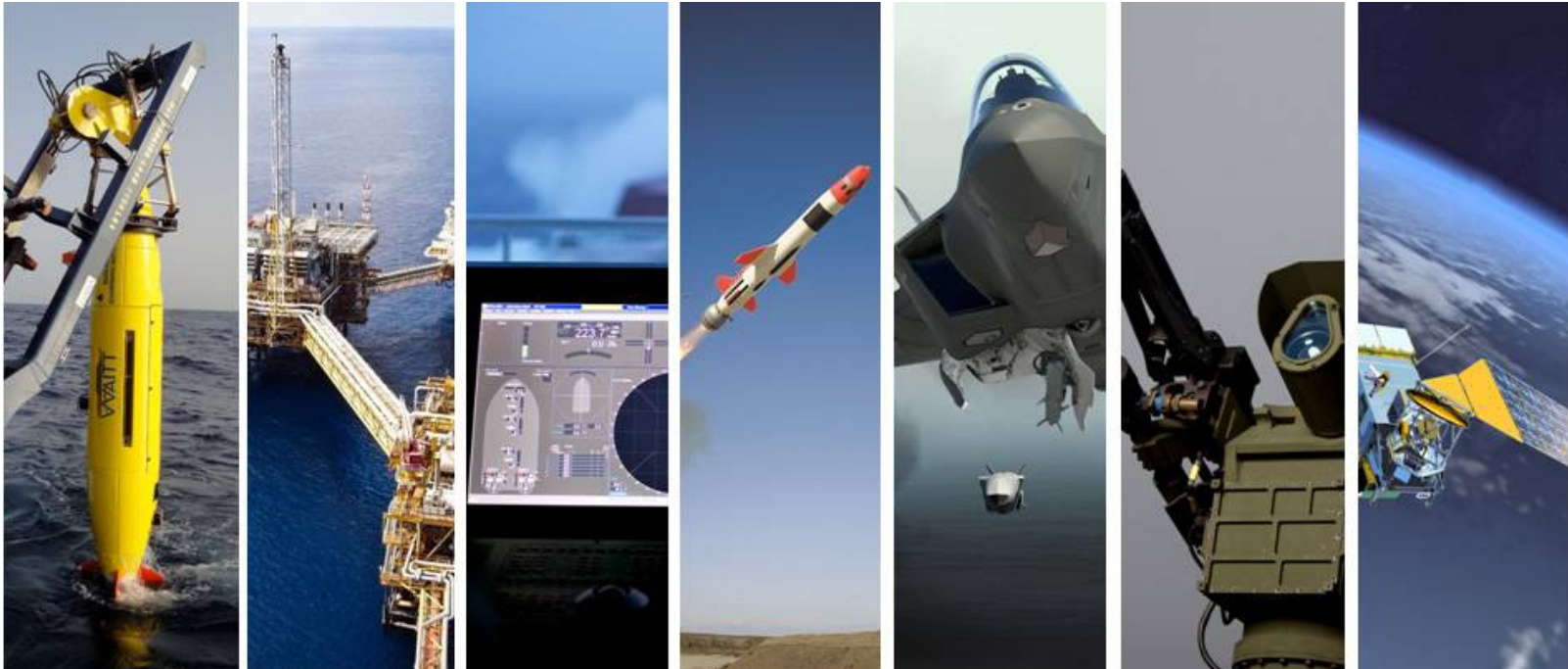
**Øystein Aasbø
Commander RNoN (Rtd)
Area Sales Manager EAR**

Presentation overview



- This is KONGSBERG
- Kongsberg Maritime
- Subsea Division

Today: International high-tech solutions, from deep sea to outer space



Advanced solutions and applications for the maritime, oil & gas, defence and space industry.

- Extreme Performance for Extreme Conditions -

Our world-class vision and values forms the basis of our actions and who we are



DETERMINED

INNOVATIVE

COLLABORATIVE

RELIABLE



KONGSBERG

200

Industrial pioneer established in 1814



KONGSBERG was internationally known for its Krag-Jørgensen rifle, developed in the late 19th century, and adopted as the standard US army rifle in 1892.

KONGSBERG have unique history and a strong culture

The KONGSBERG organisation



KONGSBERG
MARITIME



KONGSBERG
DEFENCE SYSTEMS



KONGSBERG
PROTECH SYSTEMS



KONGSBERG
OIL & GAS TECHNOLOGIES





KONGSBERG

200

Operations at 55 locations in 18 countries



international sales organisation – life cycle support – production hubs – global value chains – global sourcing

Presentation overview



- This is KONGSBERG
- Kongsberg Maritime
- Subsea Division



Kongsberg Maritime

- Offshore – Merchant Marine – Subsea
- 4 163 employees (2013)
- Installed on more than 15,000 vessels
- Dynamic positioning, navigation, automation, simulation, seabed surveying and fisheries

Presentation overview

- This is KONGSBERG
- Kongsberg Maritime
- Subsea Division



KONGSBERG
200

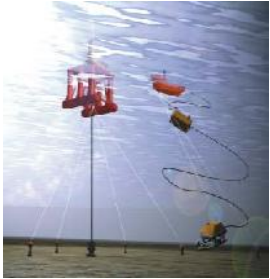


KM - Subsea

Leading technology

[play](#)

KM Subsea – Main Product line



Underwater Navigation



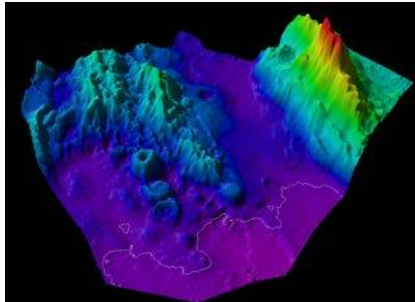
Acoustic Communication, Monitoring & Control Systems



Underwater cameras



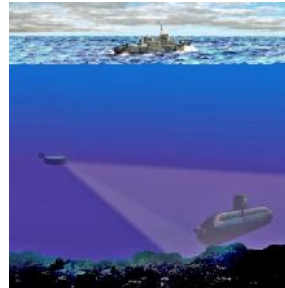
Marine Robotic Systems



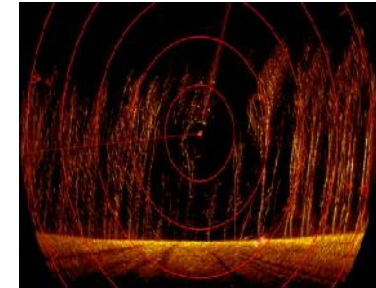
Underwater Mapping



Fish finding and fishery research




Naval Sonars



Inspection and Detection Sonars

Underwater Mapping



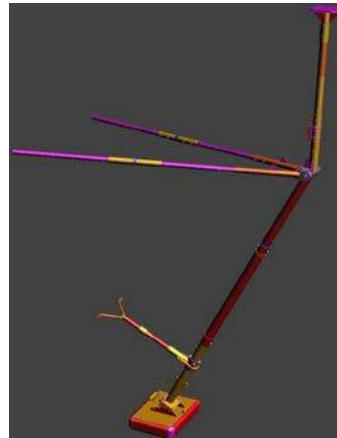
KONGSBERG

MASTERS IN SOUNDING YOUR WATERS
The complete multibeam echo sounder product range

Model	Depth
GeoSwath Plus	200 m
EM 2040 Compact	500 m
EM 2040	600 m
EM 710	2000 m
EM 302	8000 m
EM 122	11000 m

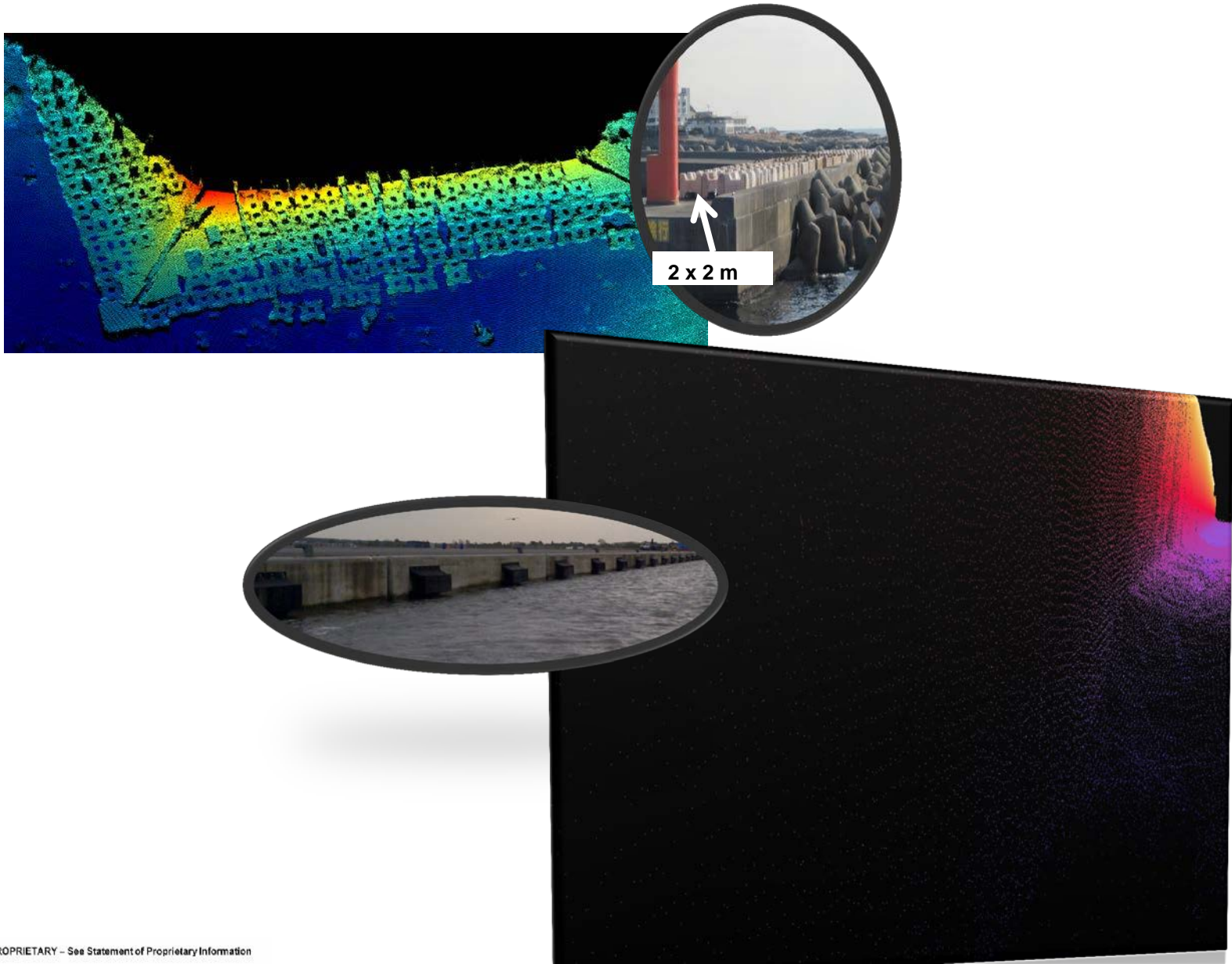
THE FULL PICTURE
WWW.KONGSBERG.COM

EM 2040 and EM 2040C



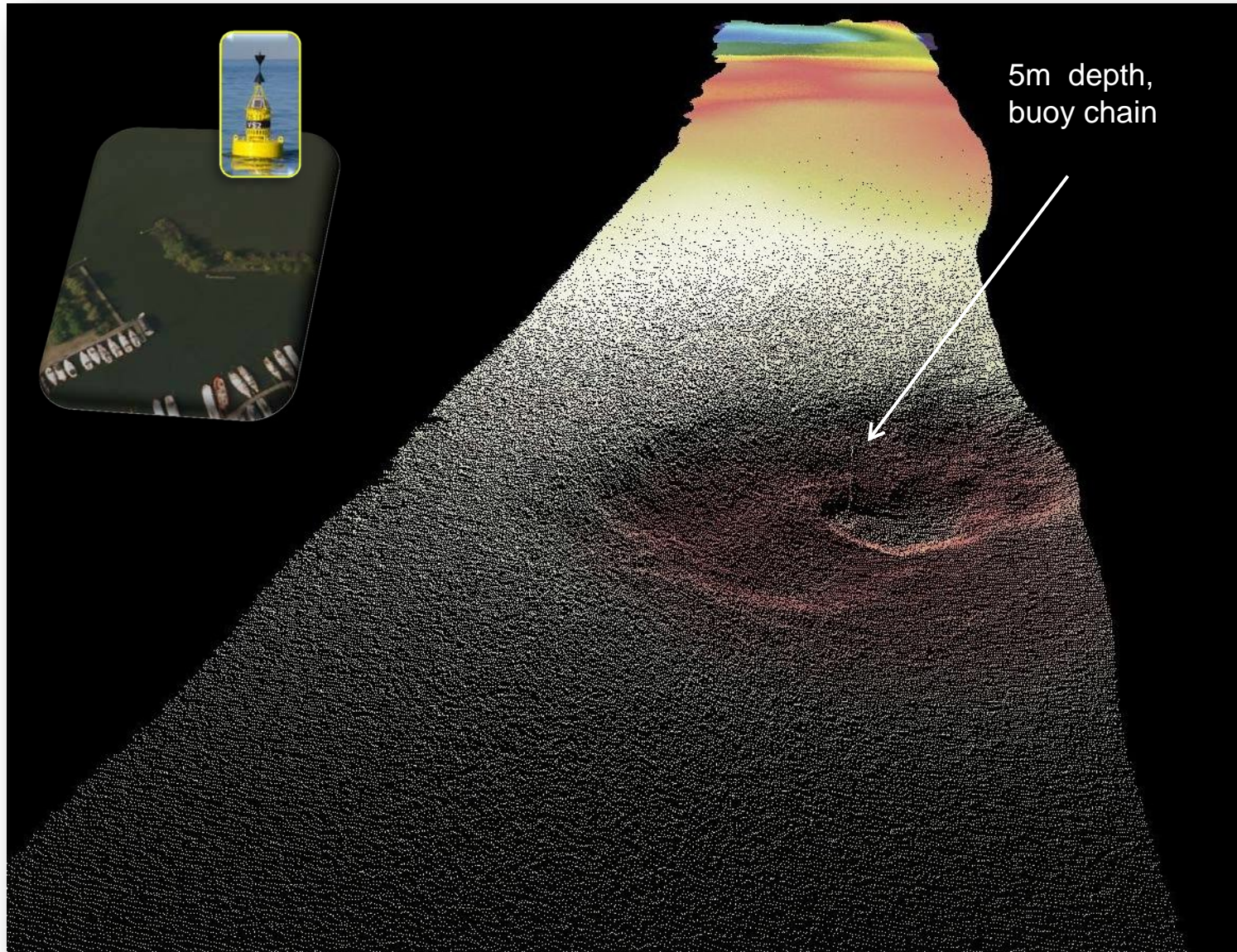


EM 2040 and EM 2040C Images





EM 2040 and EM 2040C Images

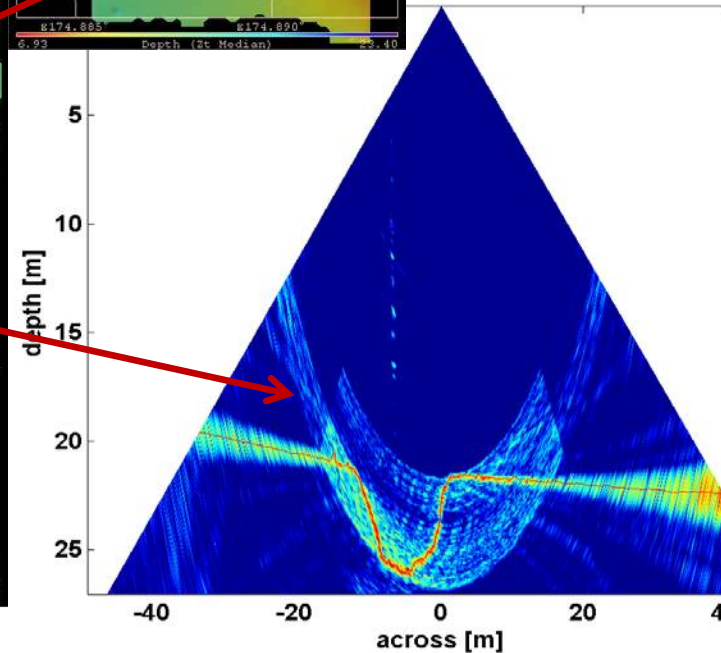
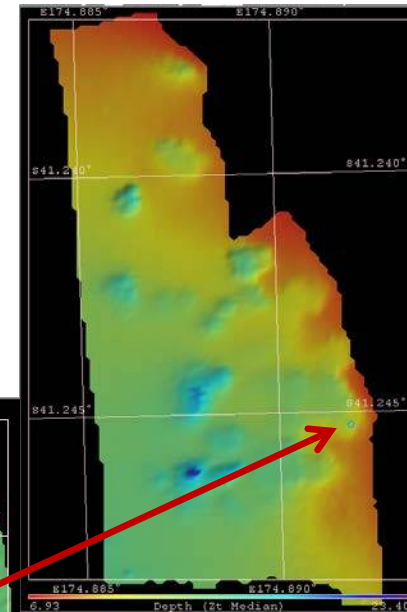
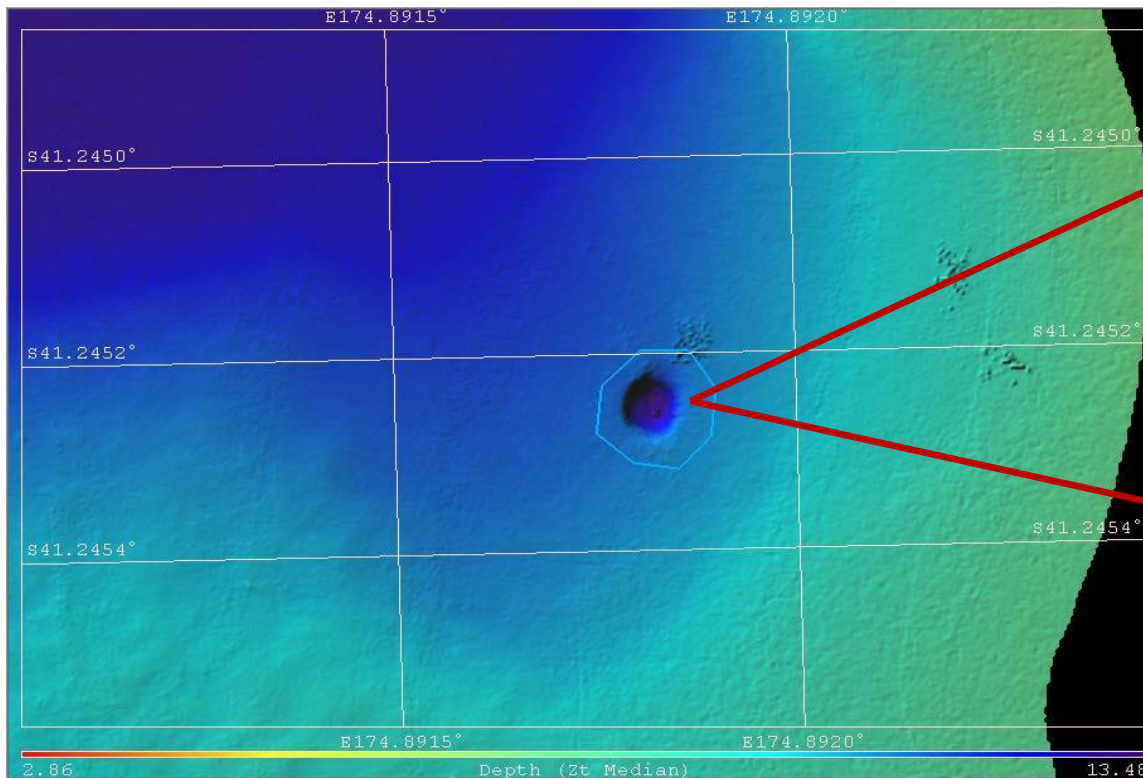




EM 2040 and EM 2040C Watercolumn

Fresh water seep, Shallow survey 2012,
Hutt river mouth, New Zealand

The seep is 2 m deep and 6.5m wide at top



g no=23185

Customer Support – Follow the sun



www.kongsberg.km.com

oystein.aasbo@km.kongsberg.com



KONGSBERG