



United Kingdom  
Hydrographic Office

# UK National Report

11<sup>th</sup> Southern Africa and Islands Hydrographic  
Commission, Maputo, 11-13 August 2014





United Kingdom  
Hydrographic Office

# Building on Success

## UK activity 2013-11

- Chart production
- ENC Production
- Publications
- New Products



United Kingdom  
Hydrographic Office

# Chart Production

7 New Edition charts, including 4 INT charts





United Kingdom  
Hydrographic Office

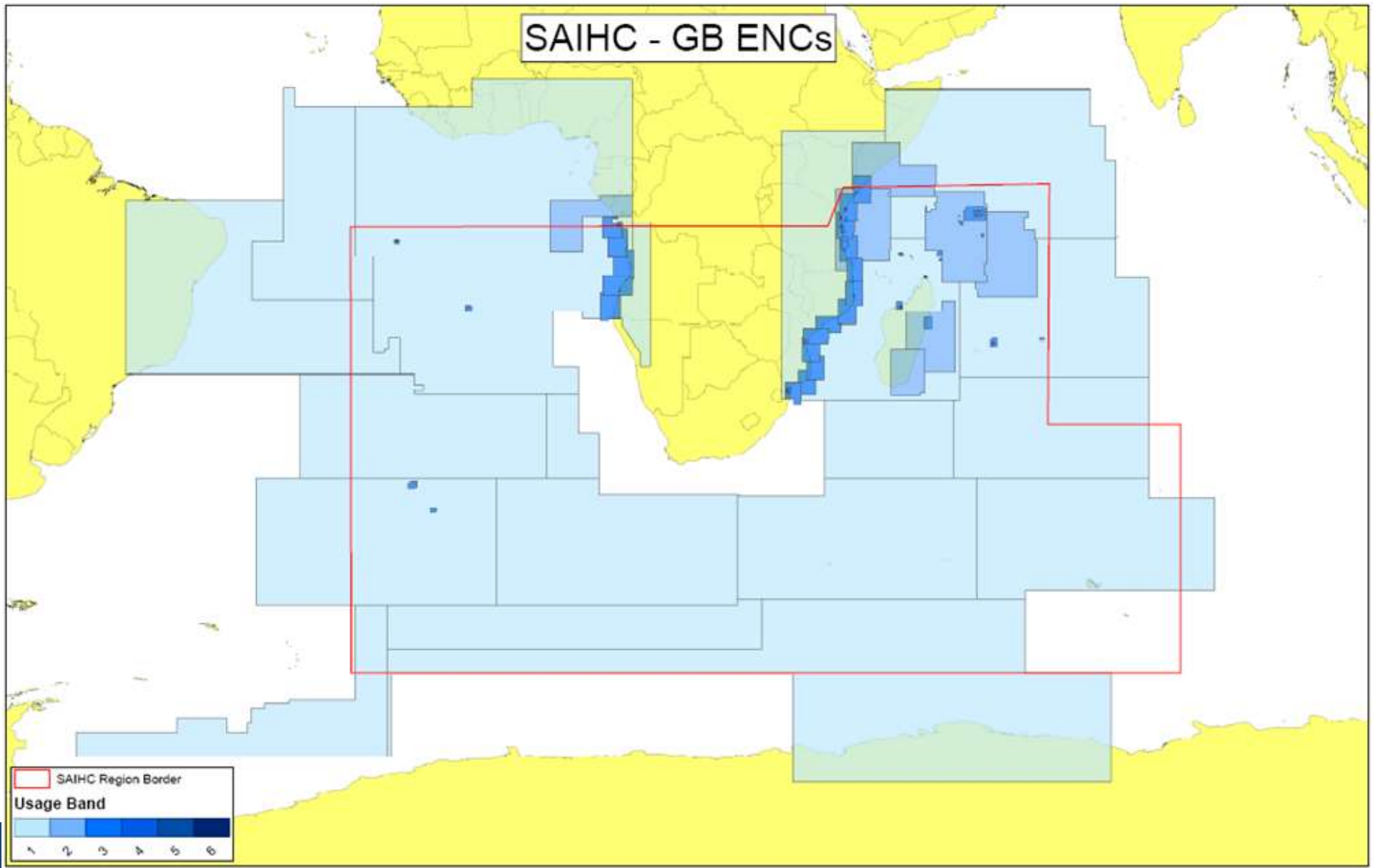
# ENC Production

107 GB cells currently available in SAIHC region,  
coverage currently comprises:

- 16 Harbour (-1)
- 32 Approach (-1)
- 33 Coastal
- 7 General
- 18 Overview (-2)



# SAIHC - GB ENC's





United Kingdom  
Hydrographic Office

# Publications

## 2 New Editions of Sailing Directions

- NP02 Africa Pilot Vol 2 Nov 2014
- NP 39 South Indian Ocean Pilot Mar 2014





United Kingdom  
Hydrographic Office

# New Products

- **Port Approach Guide - contains information from**
  - Standard navigation charts
  - Sailing Directions
  - Tidal Publications
  - Lights
  - Radio Signals





# PORT APPROACH GUIDE TEES BAY

### CONTENTS

Port Approach Guide Information sections	Included in this guide
General Information	Yes
Visual Traffic Service (VTS) Information	Yes
Warnings	Yes
Tidal Information	Yes
Anchorages	Yes
Dangerous Cargos	Yes
Quarantine Information	Not applicable
Portage	Yes
Birth Information	Yes
Port Services	Yes
Metereological Information	Yes

### KEY TO SYMBOLS IN THIS GUIDE

- Warning - refer to sea for further information
- BUILDING Principal lights and landmarks

### GENERAL INFORMATION

**VTS:**  
 Call: Tees Bay Pilot  
 VHF Channel: Ch 16  
 Telephone: +44(0)1442 405646  
 Fax: +44(0)1442 72991  
 Website: www.teesbaypilot.co.uk  
 Hours: 24/24

**C&I: Sea VTS**  
 VHF Channel: Ch 14  
 Telephone: +44(0)1442 272105 or 272306  
 Fax: +44(0)1442 272307  
 Website: www.seavts.co.uk  
 Email: seavts@seavts.co.uk  
 Hours: 24/24

**Harbour Authority:**  
 Address: P2 Transport Limited, Queen's Square, Middleborough TS2 1AU.  
 Telephone: +44(0)1442 272301  
 Fax: +44(0)1442 272227  
 Email: harbourmaster@tppl.co.uk  
 Website: www.tppl.co.uk  
 The Harbour Master's office is located at 'Sea Dock'

**Maximum size of vessel handled without consultation:** a 30.5m LOA, 40.0m beam and 17.0m draught. These figures depend on the prevailing conditions.

**Tees VTS, a Port Operations and Information Service with full radar surveillance, is maintained for the control of shipping in Tees Bay, the approaches to Hartlepool and seawards for 1.2 miles.**

**Harbour regulations:**  
 Vessels on the River Tees must comply with the Tees and Hartlepool Harbour Byelaws 1977 and the Tees and Hartlepool Port Authority General Directions. Copies of these regulations are applied to all vessels over 20m LOA which visit Teesport and are available on the website.

**Notice of RTA required:**  
 Vessels carrying dangerous cargoes shall give 24 hours notice.  
 Vessels in excess of 12m draught should consult the Harbour Master prior to entry.  
 Vessels in excess of 20m LOA shall give at least 6 hours notice to enter, depart or move within the port.

**Notes:**

### VESSEL TRAFFIC SERVICE (VTS) INFORMATION

- Vessels over 20m in length entering Tees Approach Channel or leaving the berth must conform to the VTS plan:
- The vessel is underway in every respect
- All necessary power or mechanical systems are in operation and are immediately available in the event of any failure of a primary system, and all main propulsion means, including thrusts, have been tested in both directions.
- The steering is under direct manual control and not by any device or equipment designed to function in place of the helmsman.
- Anchor is cleared away ready for use.
- A port passage plan is completed.
- A copy of Admiralty Chart 2500 or equivalent is held on board.
- A Bridge Team is manning the vessel in accordance with the vessel's operational requirements.
- The vessel listens on VHF channel 14.

No vessels over 20m in length are to enter the VTS Control Area without permission from Tees VTS.

Traffic control is operated when a vessel over 20m LOA is underway within the river to allow the vessel to negotiate the channel without hindrance from other traffic. Such vessels can only enter the channel with the approval of the VTS.

A limited traffic control is operated for vessels carrying certain dangerous cargoes to ensure a clear passage or carefully controlled passing of other traffic, the latter being controlled by the VTS.

No vessel may anchor in the Tees Approach Channel or River Tees in visibility of less than

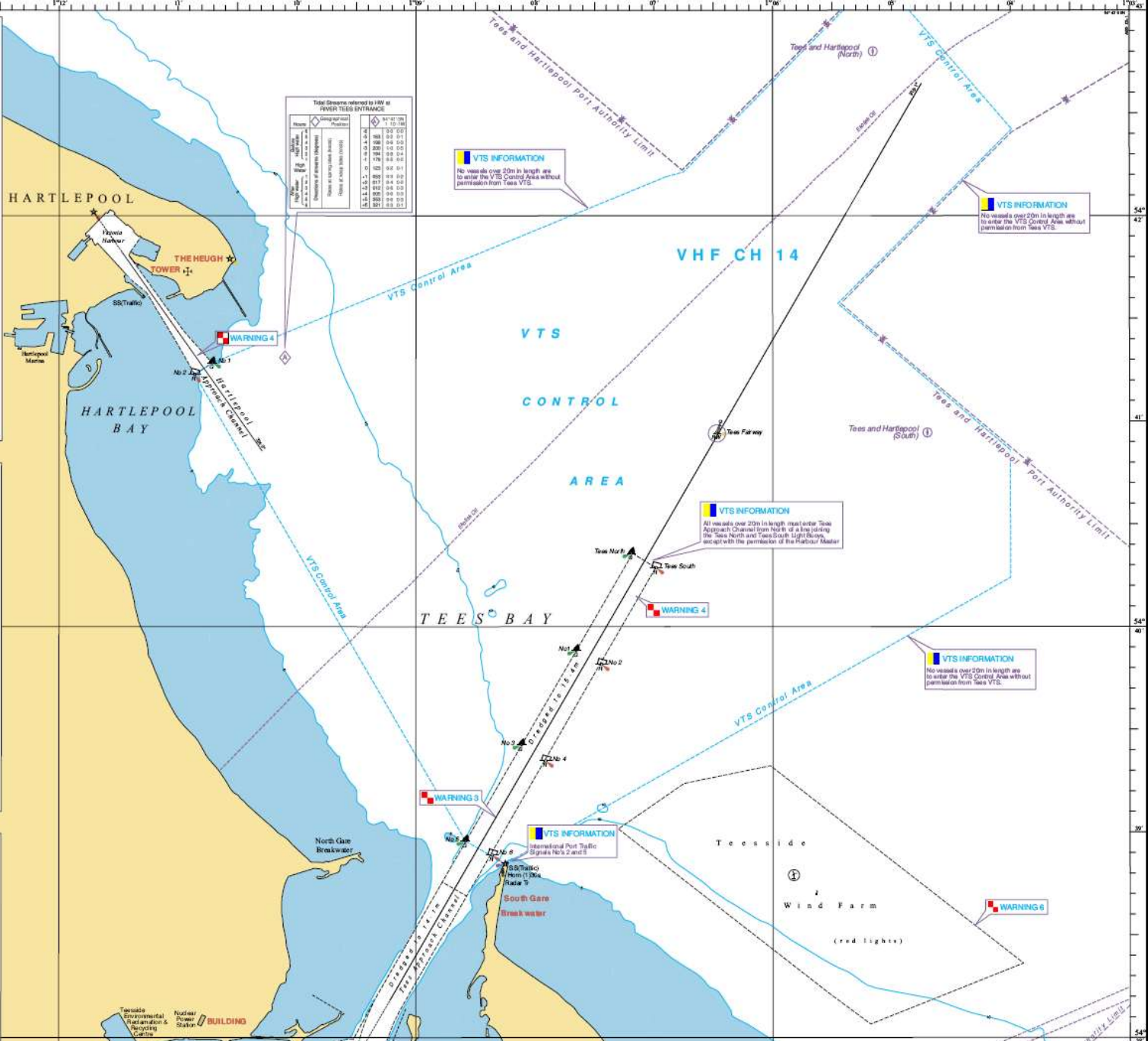


Table (Sounding referred to HM as 'TEES TIDE ENTRANCE')

Hour	High Water	Low Water
00:00	0.00	0.00
01:00	0.00	0.00
02:00	0.00	0.00
03:00	0.00	0.00
04:00	0.00	0.00
05:00	0.00	0.00
06:00	0.00	0.00
07:00	0.00	0.00
08:00	0.00	0.00
09:00	0.00	0.00
10:00	0.00	0.00
11:00	0.00	0.00
12:00	0.00	0.00
13:00	0.00	0.00
14:00	0.00	0.00
15:00	0.00	0.00
16:00	0.00	0.00
17:00	0.00	0.00
18:00	0.00	0.00
19:00	0.00	0.00
20:00	0.00	0.00
21:00	0.00	0.00
22:00	0.00	0.00
23:00	0.00	0.00
24:00	0.00	0.00



United Kingdom  
Hydrographic Office

# Looking Ahead

## Continuing UK activity 2014-15 and beyond

- Chart Production - 2 New Editions 12 months
- Publications - 1 New Edition Sailing Direction  
Port Approach Guides
- Continuing efforts to support local data gathering initiatives, and to link these into a broad programme of prioritised chart compilations and new editions.





United Kingdom  
Hydrographic Office

# Questions

**George Wallace**

Head of International Partnering (Middle East and Africa)