



Kartverket

Renewal of Data Acquisition Tools

*Noralf Slotsvik, the Norwegian Hydrographic Service
Southern Africa and Islands Hydrographic Commission 11th meeting
Maputo 11-12 August 2014*



High Speed Hydrographic Survey Launches



PHOTO: ARNFINN LIE

Three Identical Launches

- MB Anda
Delivery: December 2013
- MB Lomvi
Delivery: March 2014
- MB Havelle
Delivery: May 2014



MB Anda was delivered to the NHS in Stavanger, Norway, December 2013

Technical Particulars

- Length: 11,15 m
- Breadth: 3,4 m
- Draught: 0,8 m
- Service speed: 25 knots
- Max speed: 28 knots
- Displacement: 12,5 tonnes
- Range (nautical miles): 300
- Main engines (2x): Iveco 350 HP
- Waterjets (2x): Ultrajet 340 HT
- Multi-beam echo sounder: EM2040D
- Seapath 330+ motion sensor with MRU5+
- Building materials: Aluminium
- Ice-strengthened reinforcements
- Designed in accordance with the Nordic Boat Standard
- Builder & designer: Swede Ship Marine



PHOTO: ARNFINN LIE

On the Inside



PHOTO: ARNFINN LIE

Ergonomic Work Spaces



PHOTO: ARNFINN LIE

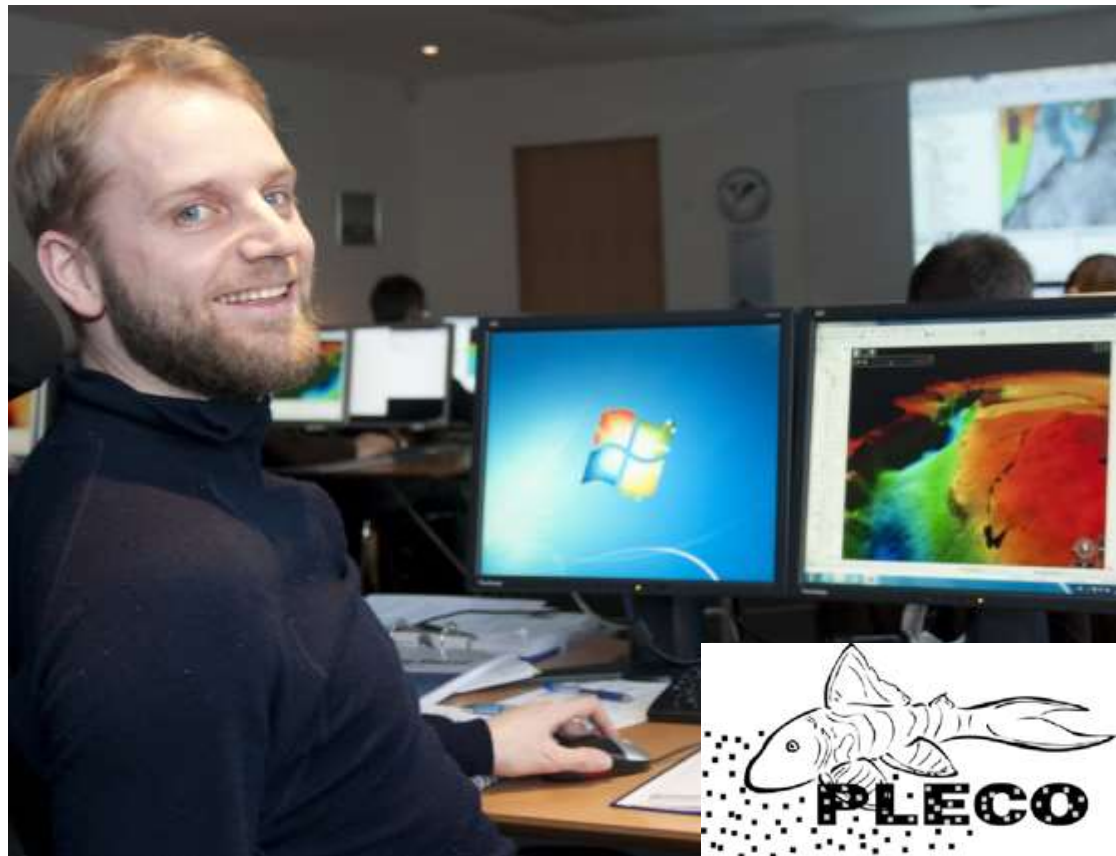
The NHS' Survey Vessel MS Hydrograf



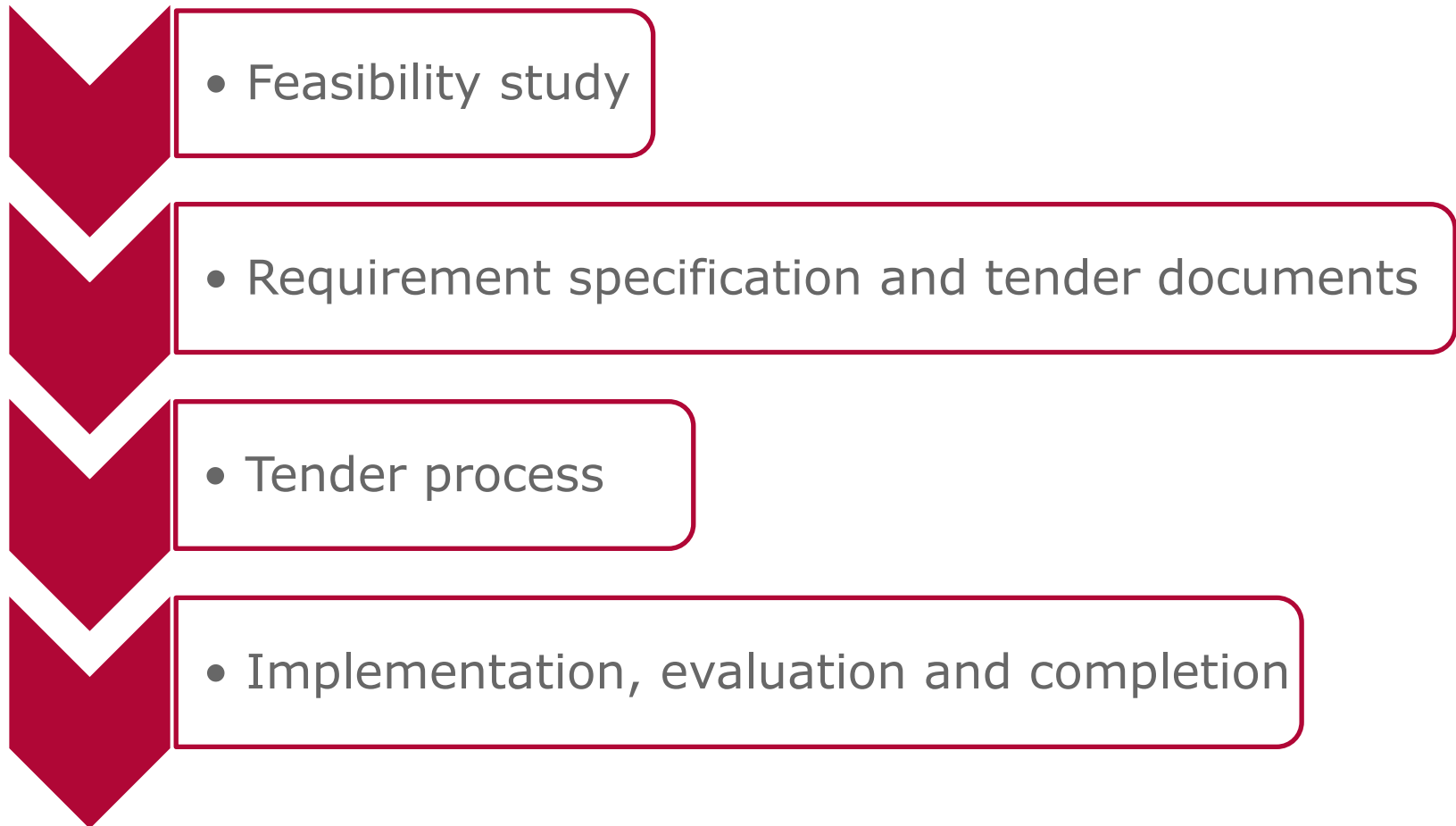
The PLECO Project – New Processing Data Tool

Requirements:

- Visualization
- Quality Information
- Traceability
- Creating DTM or elevation models
- Model analysis
-



Phases in the PLECO Project



Deliveries from CARIS

Delivery	Data
Delivery Basic System	7 February 2013
Approval Basic System	12 April 2013
Delivery Drop A (32 rqt)	4 October 2013
Delivery Drop B (11 rqt)	29 August 2014
Approval Final Delivery	6 October 2014
System ready for normal operation	3 November 2014
System approved	3 February 2015