

Kongsberg Maritime – Subsea

BRING CLARITY TO THE WORLD BELOW

SAHIC Cape Town 2016



KONGSBERG

Presented by

Øystein Aasbø

Commander RNoN (Rtd)

Area Sales Manager

Kongsberg Maritime – Subsea Division

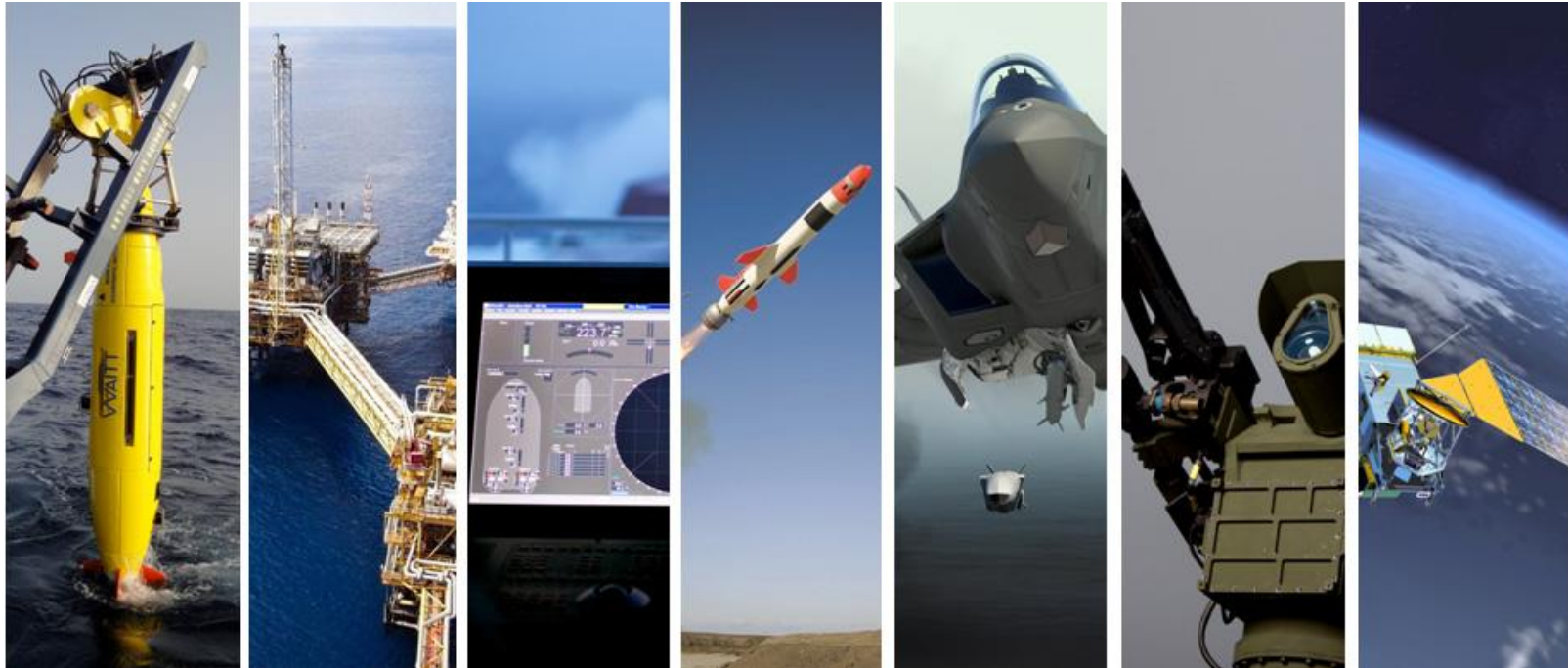


Presentation overview

- This is KONGSBERG
- Kongsberg Maritime
- Subsea Division
- Kongsberg Maritime Hydrographic Portfolio



Today: International high-tech solutions, from deep sea to outer space



Advanced solutions and applications for the maritime, oil & gas, defence and space industry.

- Extreme Performance for Extreme Conditions -



The KONGSBERG organisation





Our global business system



International sales organization – life cycle support – production hubs – global value chains – global sourcing

Kongsberg Maritime South Africa (Pty) Ltd



KONGSBERG





Presentation overview

- This is KONGSBERG
- **Kongsberg Maritime**
- Subsea Division
- Kongsberg Maritime Hydrographic Portfolio



Kongsberg Maritime

- Offshore – Merchant Marine – Subsea – Emerging Business
- 59 offices in 20 countries
- 4659 employees (12-2015)
- Revenues MNOK 9 703 (2015)
- Installed on more than 18.000 vessels
- Dynamic positioning, navigation, automation, simulation, Subsea and seismic instrumentation and fisheries

Customer Support – Follow the sun





Presentation overview

- This is KONGSBERG
- Kongsberg Maritime
- Subsea Division
- Kongsberg Maritime Hydrographic Portfolio



KONGSBERG

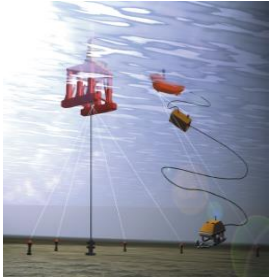


KM - Subsea

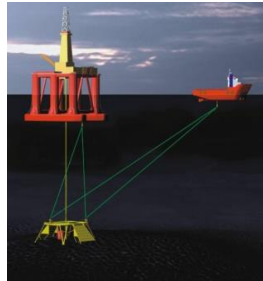
Leading technology



KM Subsea – Main Product Line



Underwater Navigation



Acoustic Communication, Monitoring & Control Systems



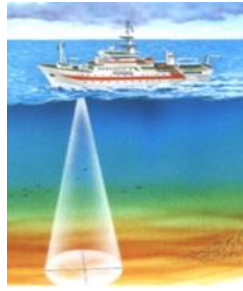
Underwater cameras



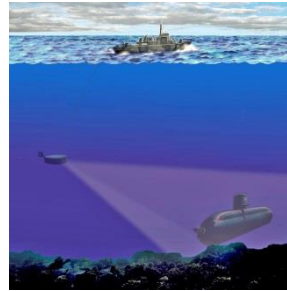
Marine Robotic Systems



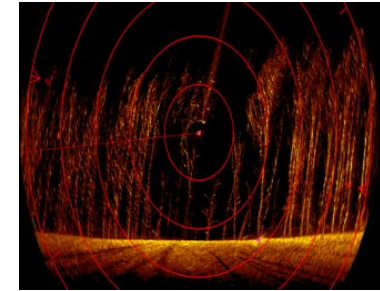
Hydrography Systems



Fish finding and fishery research



Naval Sonars



Inspection and Detection Sonars



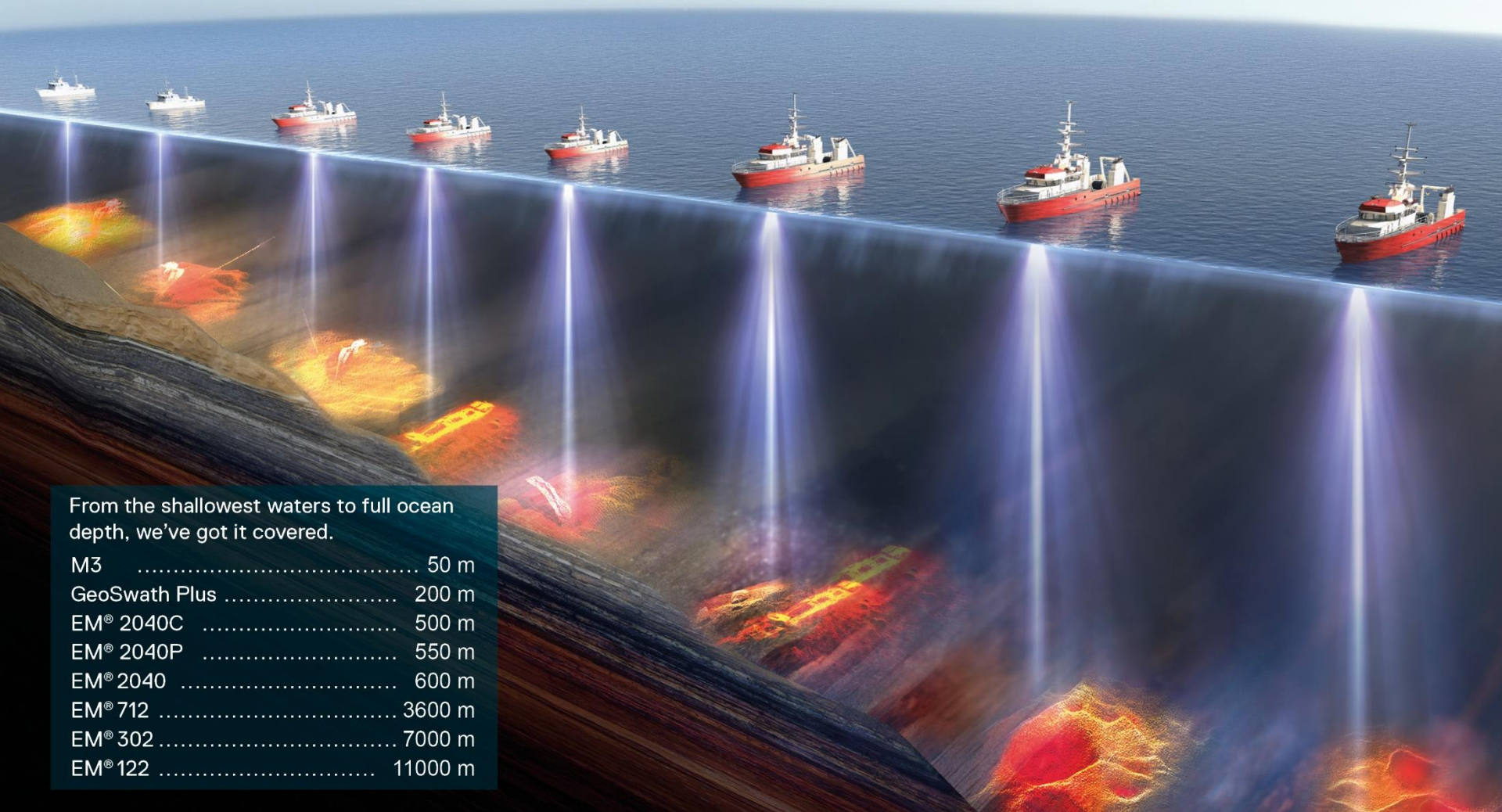
Presentation overview

- This is KONGSBERG
- Kongsberg Maritime
- Subsea Division
- Kongsberg Maritime Hydrographic Portfolio

Kongsberg Multibeam Echo Sounder Portfolio



THE COMPLETE MULTIBEAM ECHO SOUNDER RANGE



From the shallowest waters to full ocean depth, we've got it covered.

M3	50 m
GeoSwath Plus	200 m
EM [®] 2040C	500 m
EM [®] 2040P	550 m
EM [®] 2040	600 m
EM [®] 712	3600 m
EM [®] 302	7000 m
EM [®] 122	11000 m

EM[®] 2040C – Installation

Very high resolution Multibeam Echo Sounder



KONGSBERG



Applications from very high resolution inspection to shallow water surveys.

EM[®] 2040P – Installation

Very high resolution Multibeam Echo Sounder



KONGSBERG



Applications from very high resolution inspection to shallow water surveys.



EM[®] 2040 – Installation

Very high resolution Multibeam Echo Sounder



Applications from very high resolution inspection to shallow water surveys.

EM[®] 2040/EM[®] 2040C – Installation

Very high resolution Multibeam Echo Sounder



Applications from very high resolution inspection to shallow water surveys.

Deep Water System - Installation



KONGSBERG



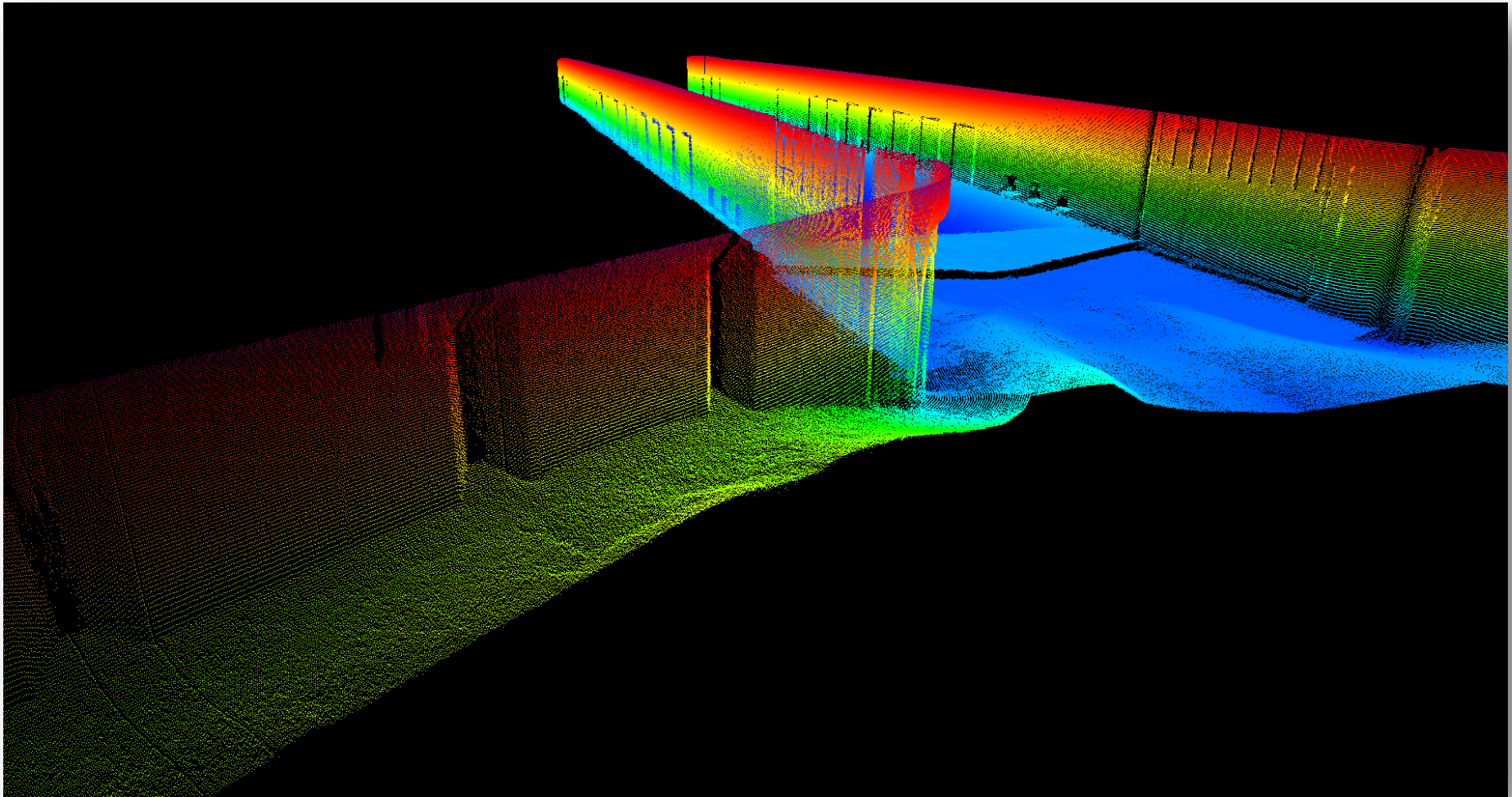
Applications from very high resolution inspection to shallow water surveys.

EM[®] 2040 – Results

Very high resolution Multibeam Echo Sounder



KONGSBERG



Courtesy of Port of London

Applications from very high resolution inspection to shallow water surveys.

EM[®] 2040C – Results

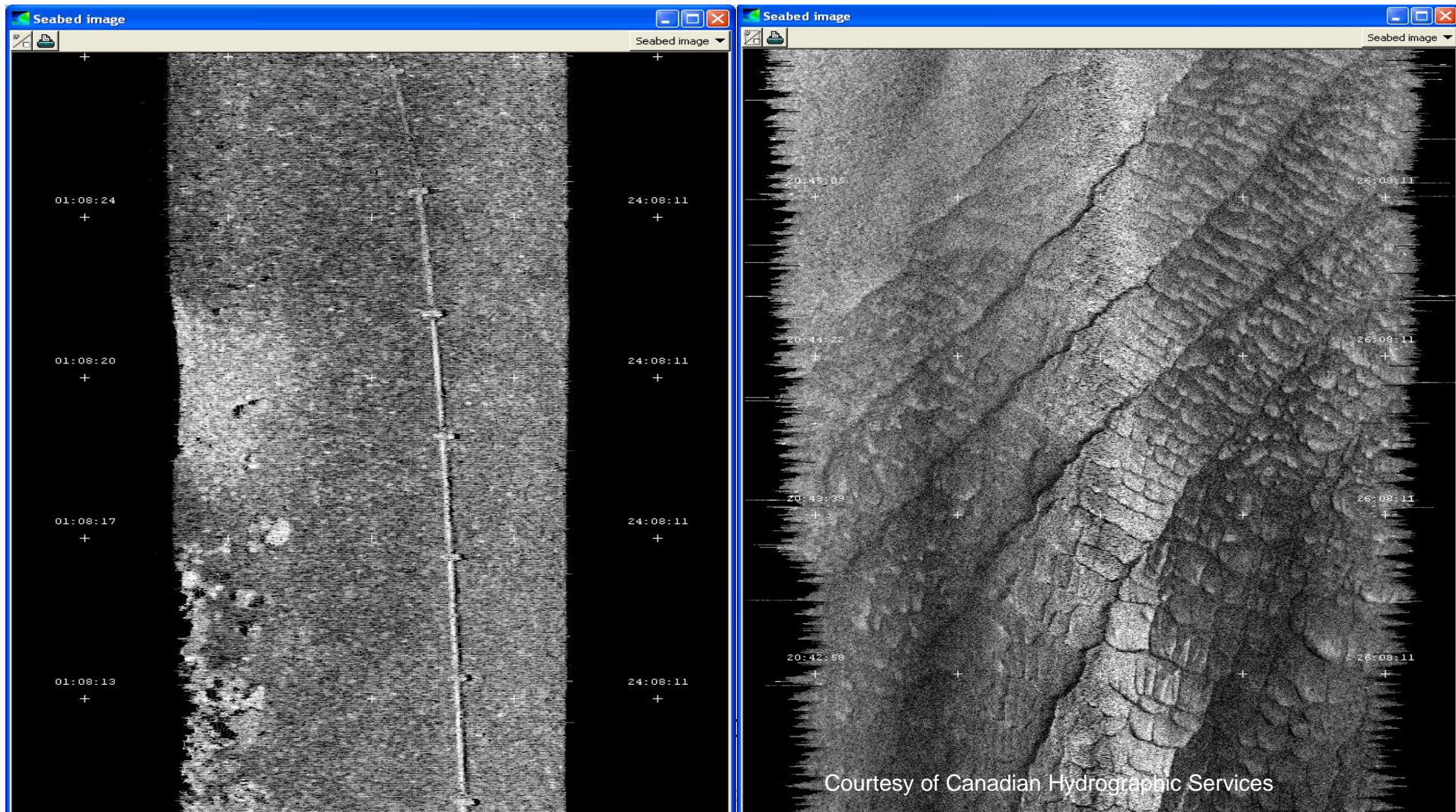
Very high resolution Multibeam Echo Sounder



KONGSBERG

Pipeline – Sydney Marina, 400kHz / 50us

Sandwaves, 90 - 100m depth, 300kHz / 70us



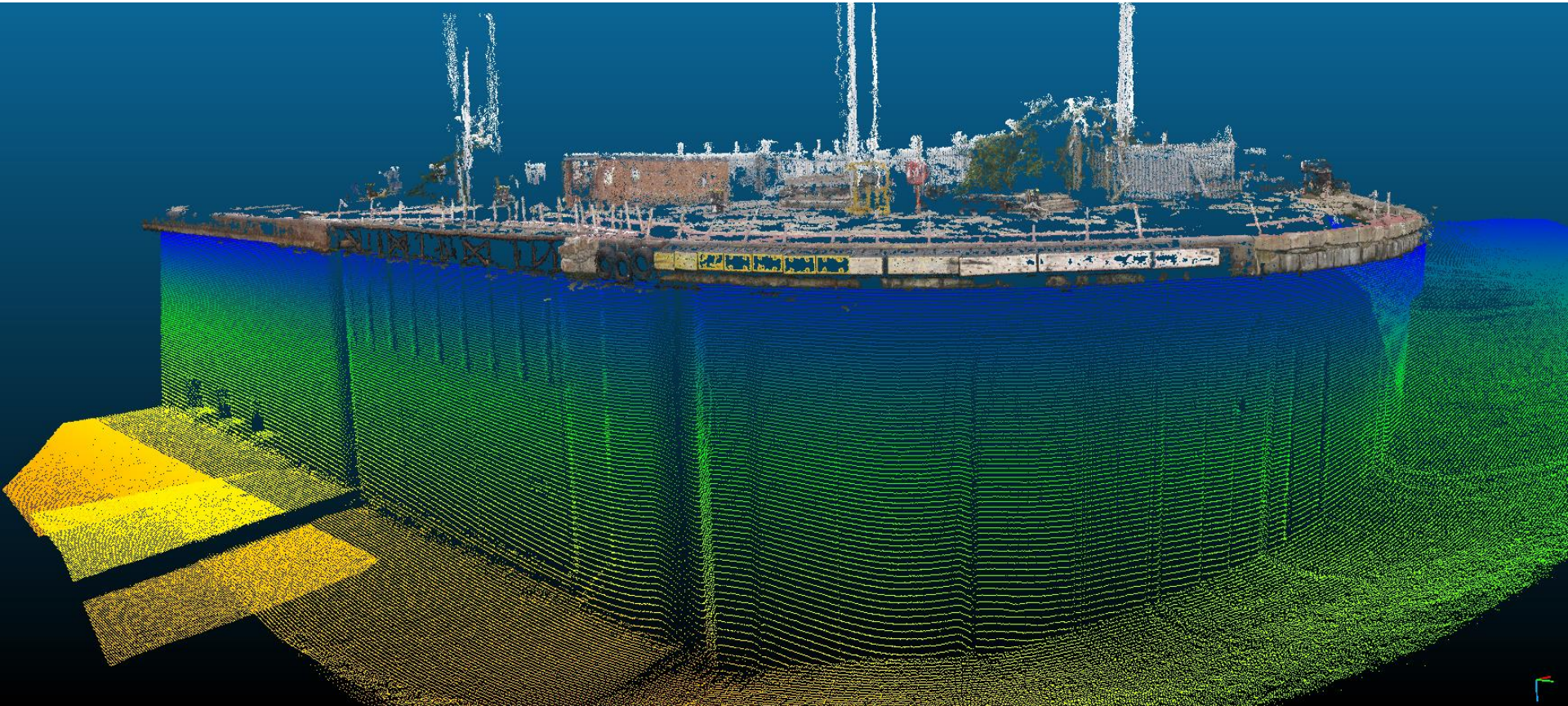
Courtesy of Canadian Hydrographic Services

EM[®] 2040C – Results

Very high resolution Multibeam Echo Sounder



KONGSBERG



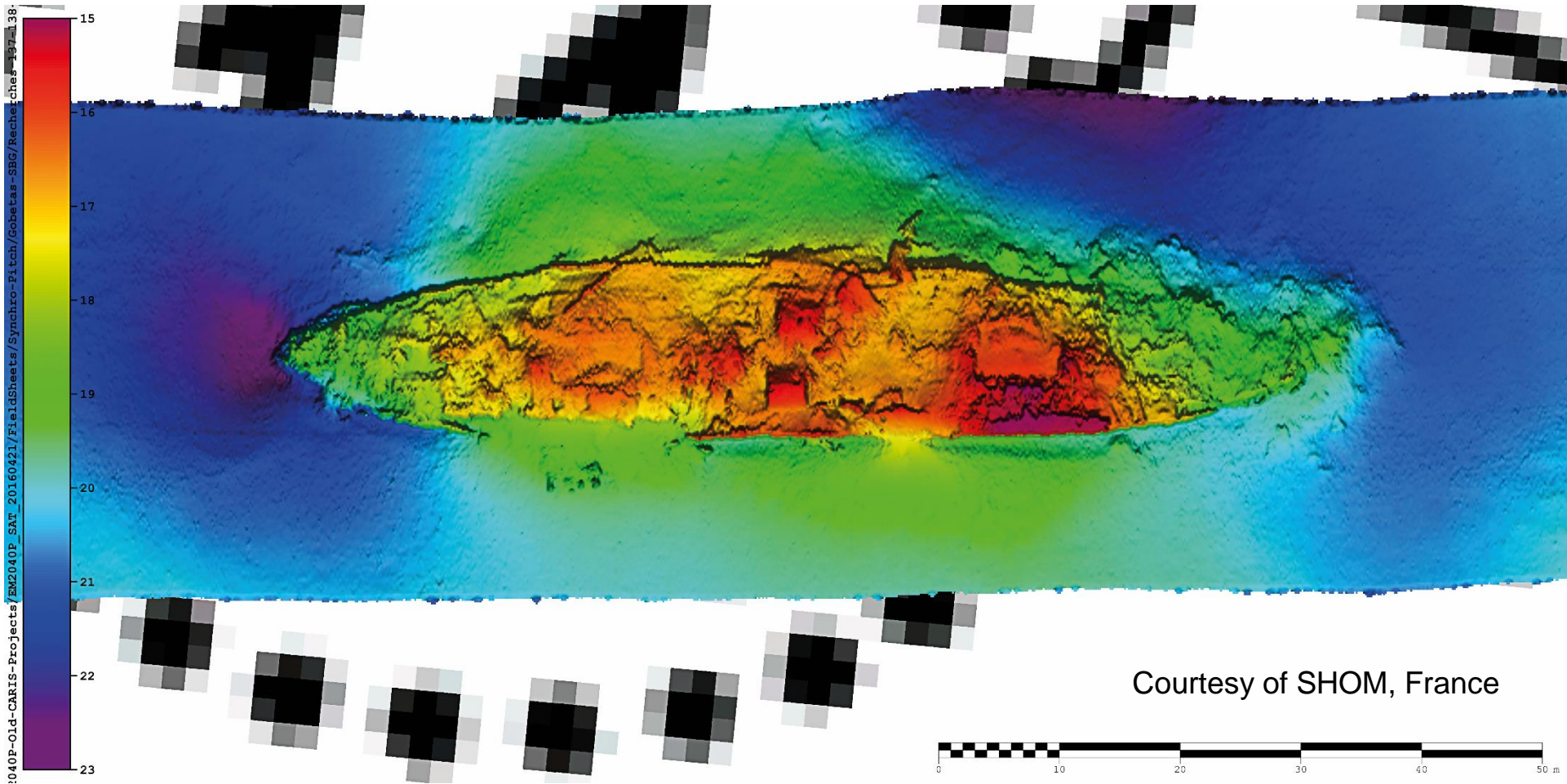
Applications from very high resolution inspection to shallow water surveys.



KONGSBERG

EM[®] 2040P – Results

Very high resolution Multibeam Echo Sounder



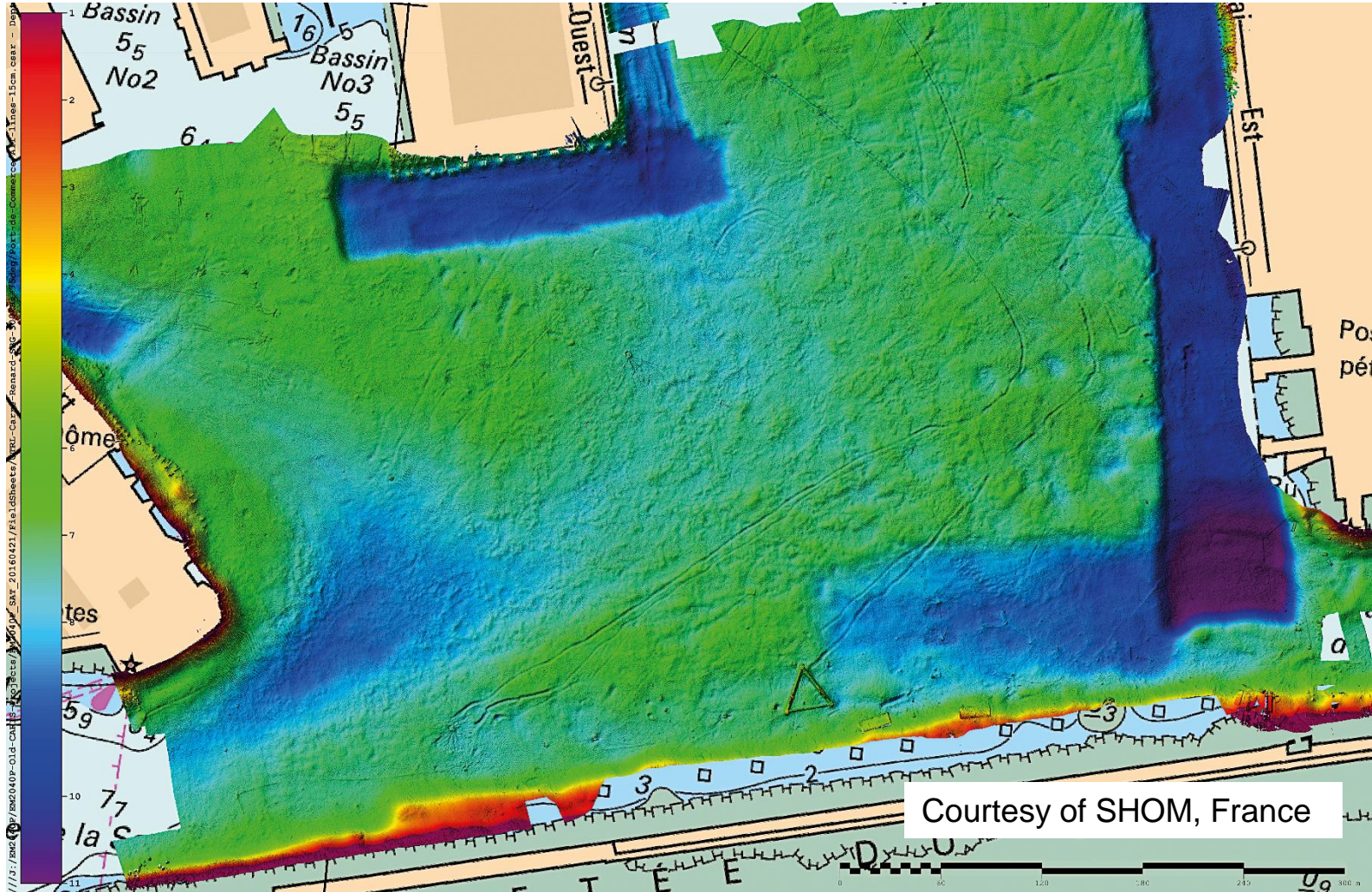
Applications from very high resolution inspection to shallow water surveys.

EM[®] 2040P – Results

Very high resolution Multibeam Echo Sounder



KONGSBERG



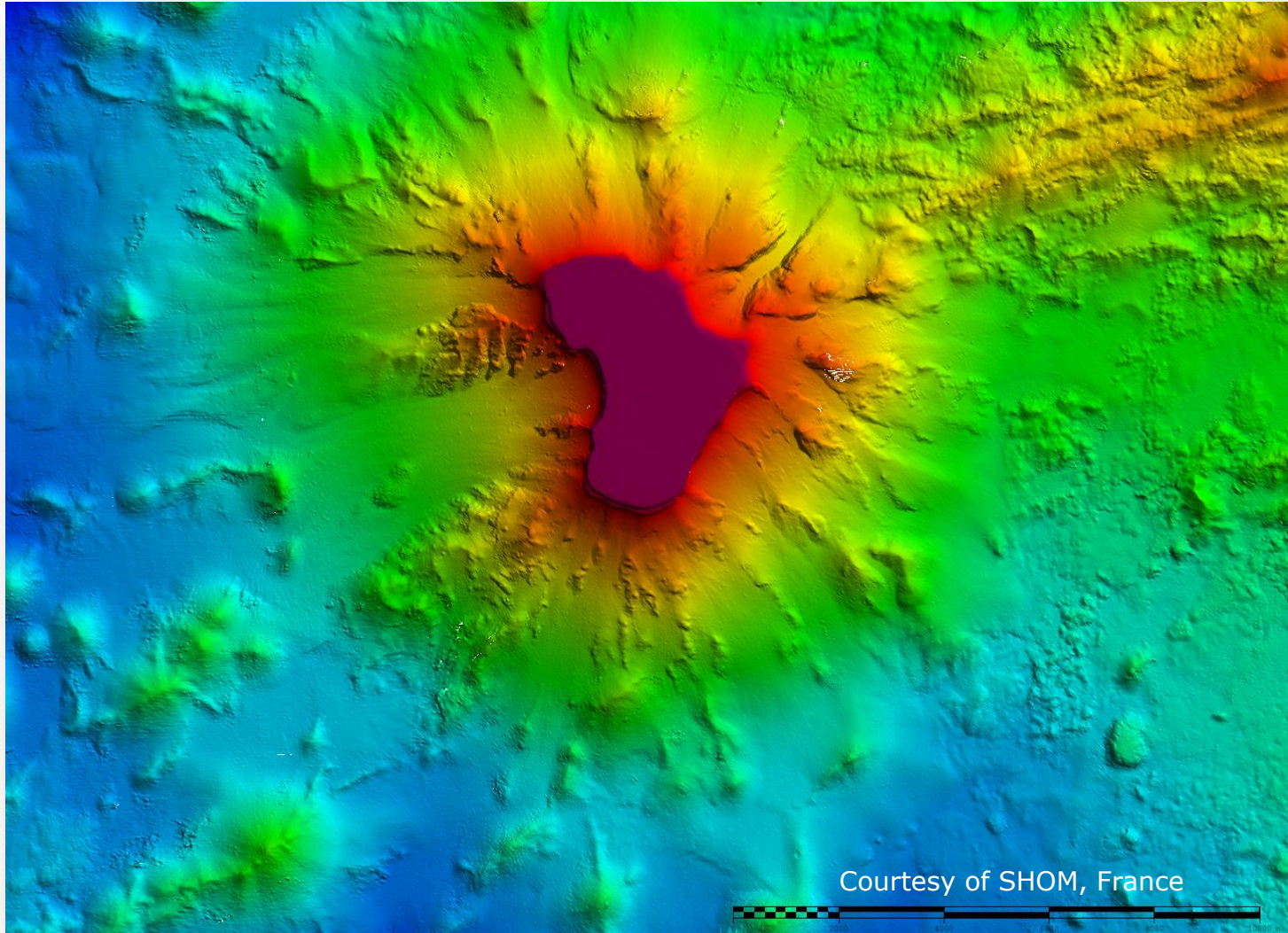
Applications from very high resolution inspection to shallow water surveys.

EM[®] 122 – Results

Full Ocean Depth Multibeam Echo Sounder



KONGSBERG



Courtesy of SHOM, France



Fishery Research Vessel – Ministry of Fisheries, Angola



KONGSBERG



Thank you for your attention!



KONGSBERG

oystein.aasbo@km.kongsberg.com