

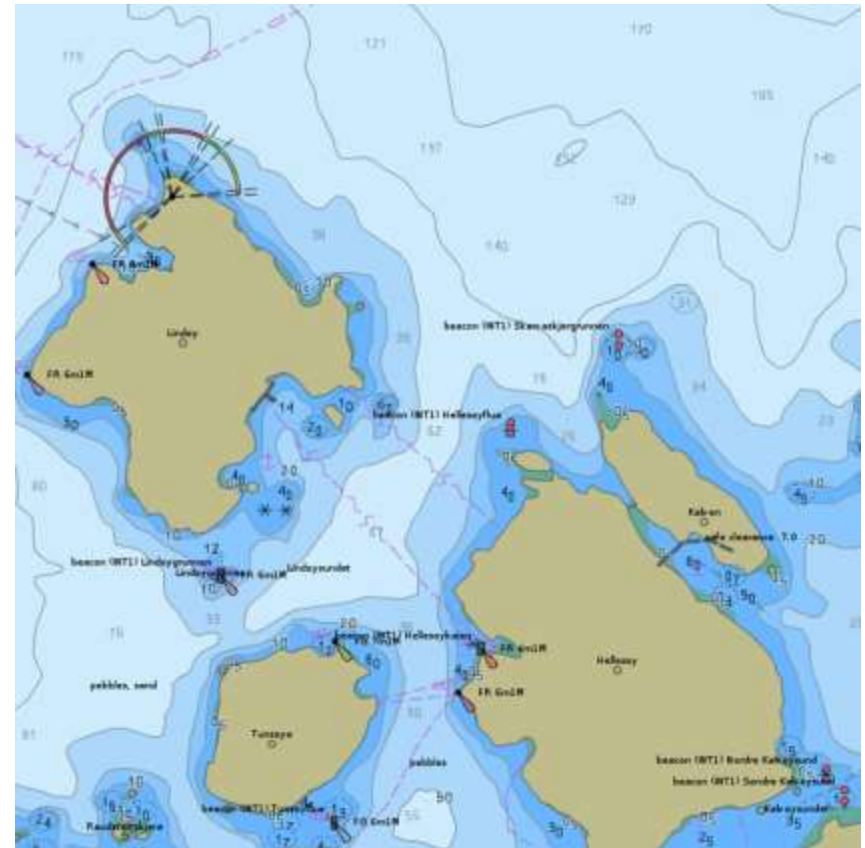


PRIMAR[®]

PRIMAR RENC

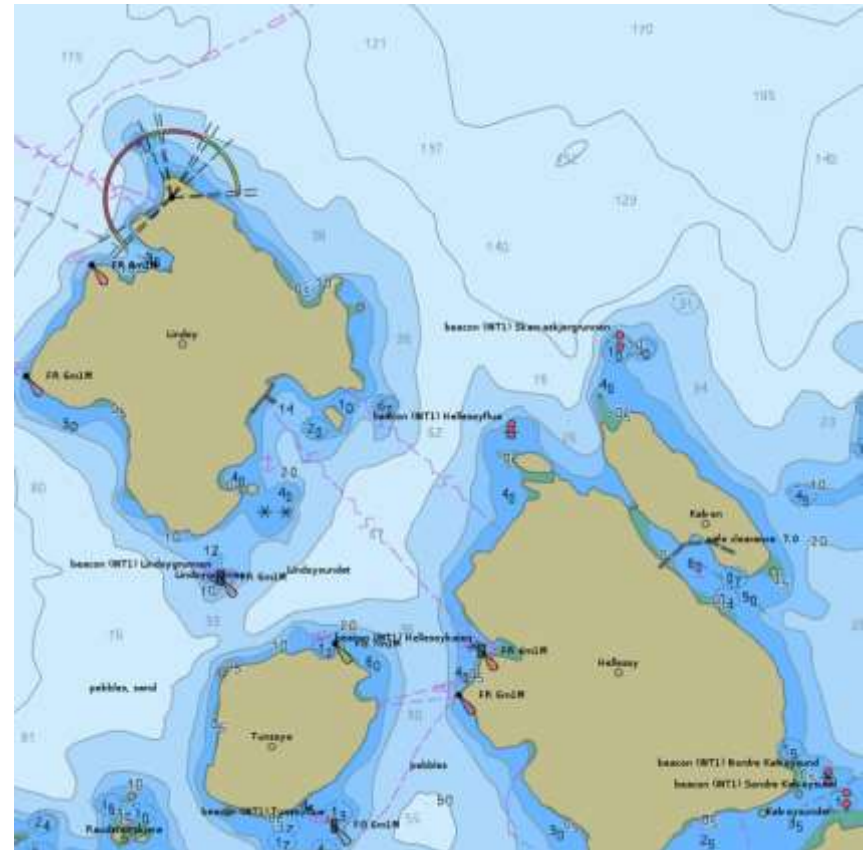
What is PRIMAR?

- A Regional ENC Coordinating Centre (RENC)
- Operated on a non-profit basis by the **Norwegian Hydrographic Service** in close cooperation with **Electronic Chart Centre (ECC)**.
- Located in Stavanger, Norway



What does PRIMAR?

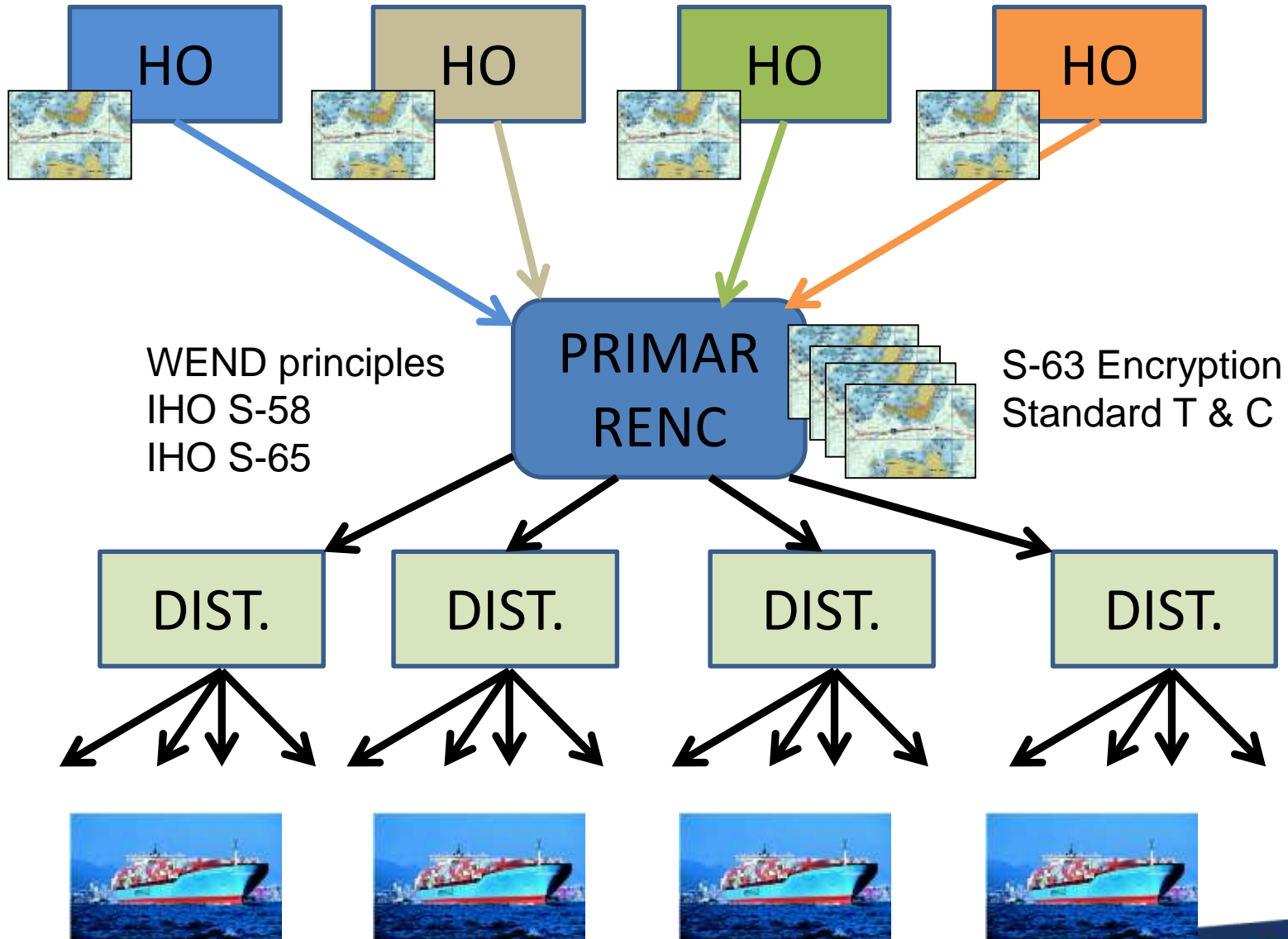
- Provides a consistent and reliable electronic navigational chart (ENC) service world-wide.
- Fully compliant with IHO guidelines, principles and standards.
- PRIMAR RENC:
 - 17 member nations
 - ENCs from more than 60 different nations available in the PRIMAR ENC service.



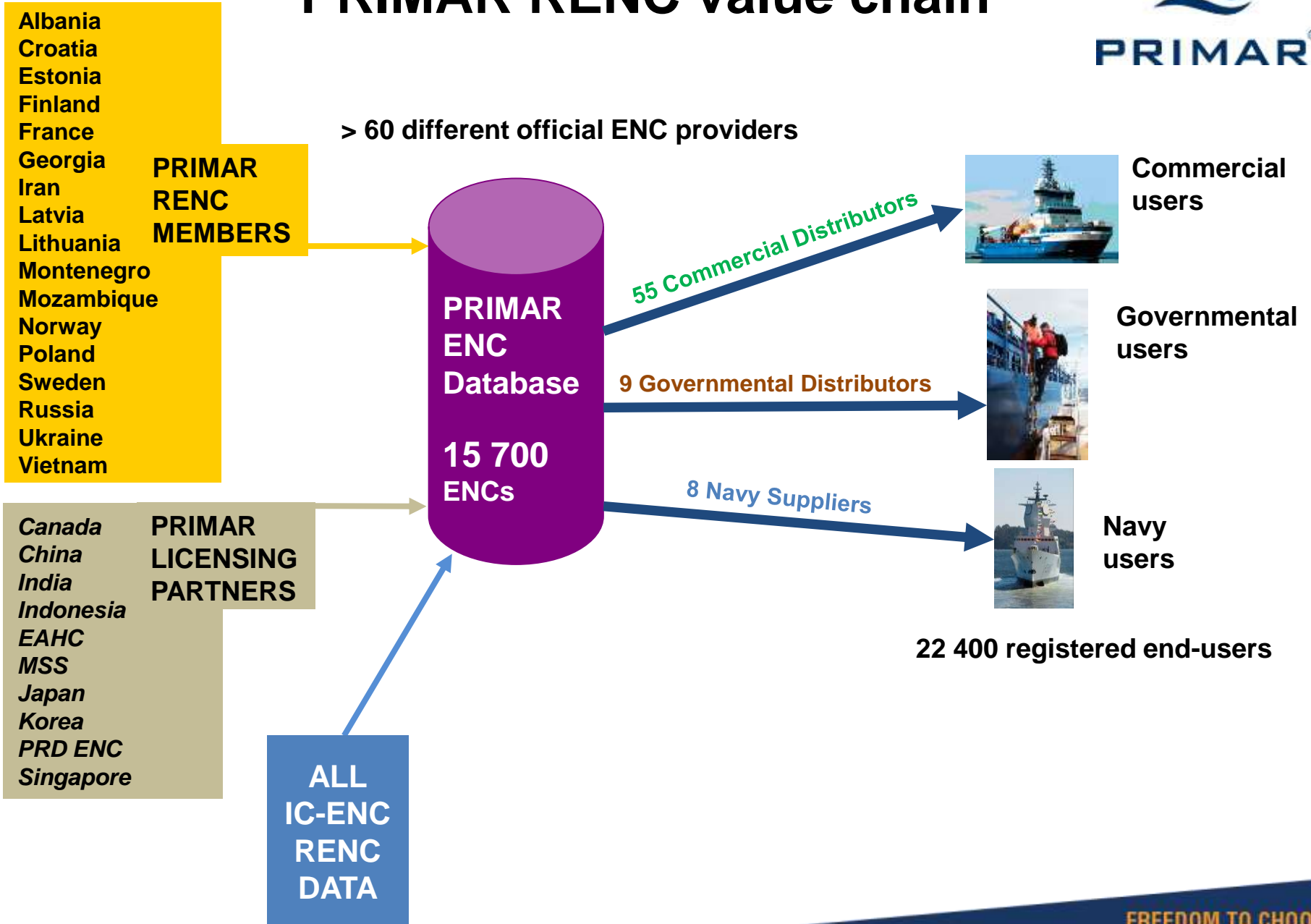
PRIMAR's Vision

IN ORDER TO ENHANCE SAFETY AT SEA AND PROTECT THE MARITIME ENVIRONMENT, PRIMAR'S VISION IS TO BE THE MOST EFFICIENT MODEL FOR THE PROVISION OF ENC SERVICES AND MARITIME GEOSPATIAL DATA WORLDWIDE.

ENC Distribution through PRIMAR



PRIMAR RENC value chain



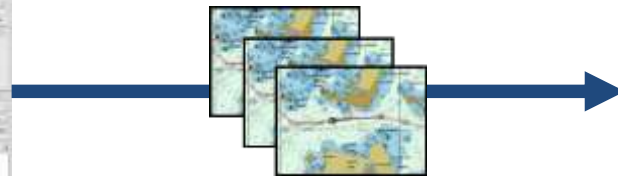
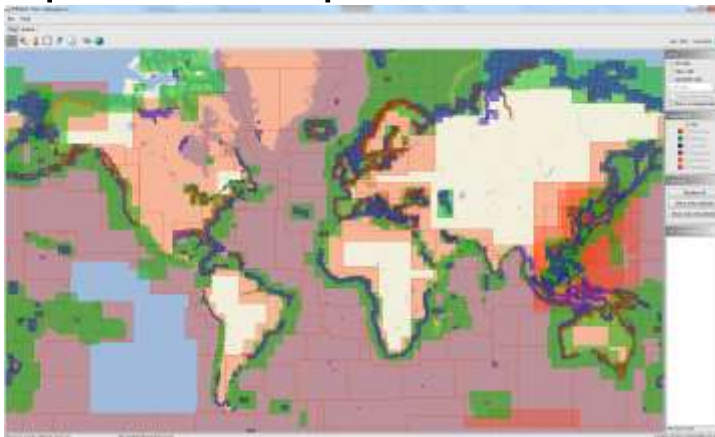
In-house Developed Validation tools

- Virtual PRIMAR Network (VPN) for data transfer and data management
 - S58 Upload Checks performed during the upload of data
- Validation Report Checker contains all the functionality for ENC Validation
 - Checking of validation logs from dKart Inspector and ENC Analyzer
 - Overlap Checker for overlapping candidates
 - Consistency checker for horizontal and vertical ENC consistency
 - S58 Upload Checks performed during the upload of data
 - ISO8211 to text converts EN/ER file to readable format
- S57 Advisor (Errors database) containing error/warnings discovered from validation tools



PRIMAR Navy / Governmental Supplier Services

- Supply ENCs to your Navy / Governmental users.
- Access to PRIMAR global ENC database.
- Easy operation from the PRIMAR Chart Catalogue.
 - Register and add users, Create ENC portfolios, Activate area of interest, View orders/reports, View licensee status, Download ENC updates and permit files etc.

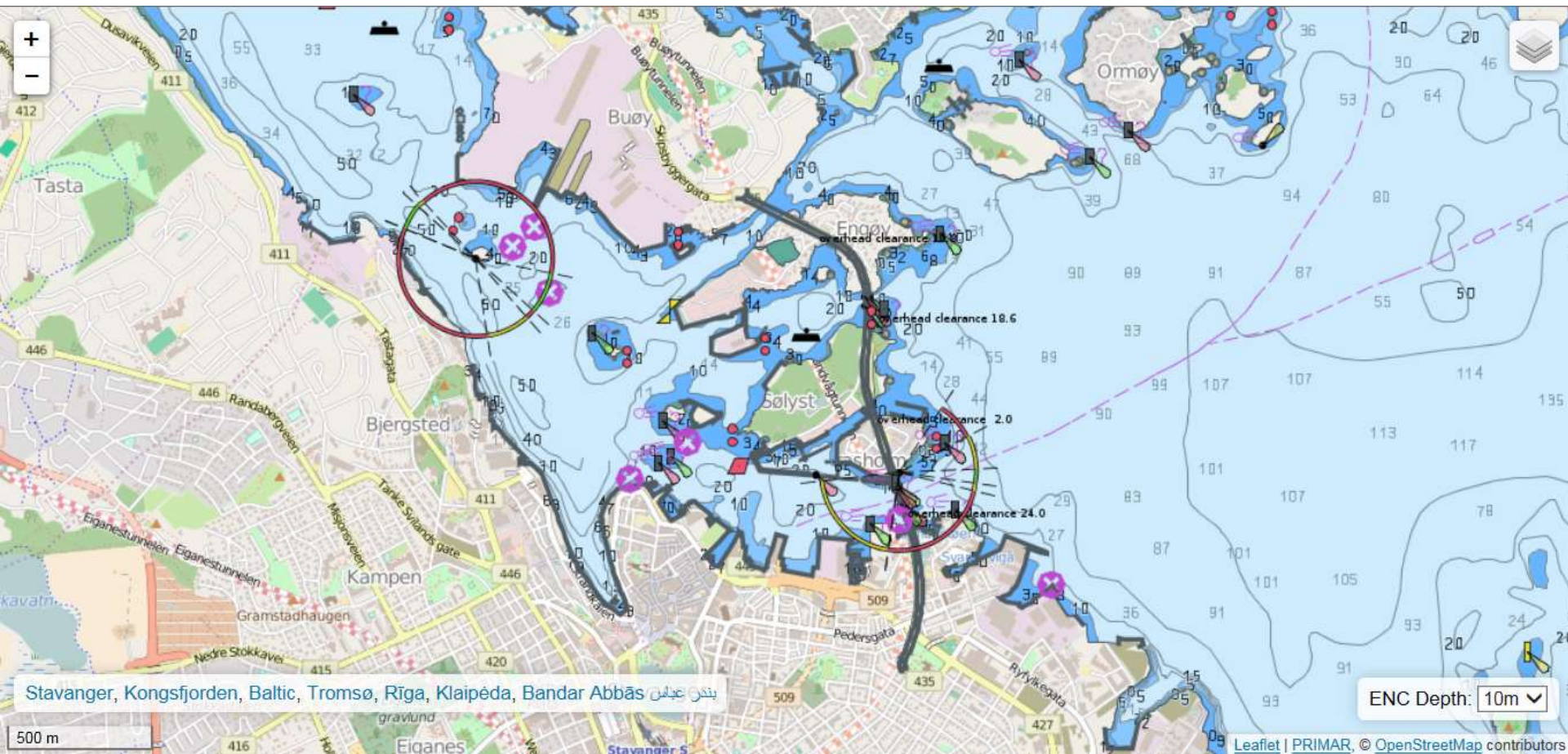


Navy
users

PRIMAR Web Chart Service



Fulfilling your MSDI needs. Combining data from several sources.

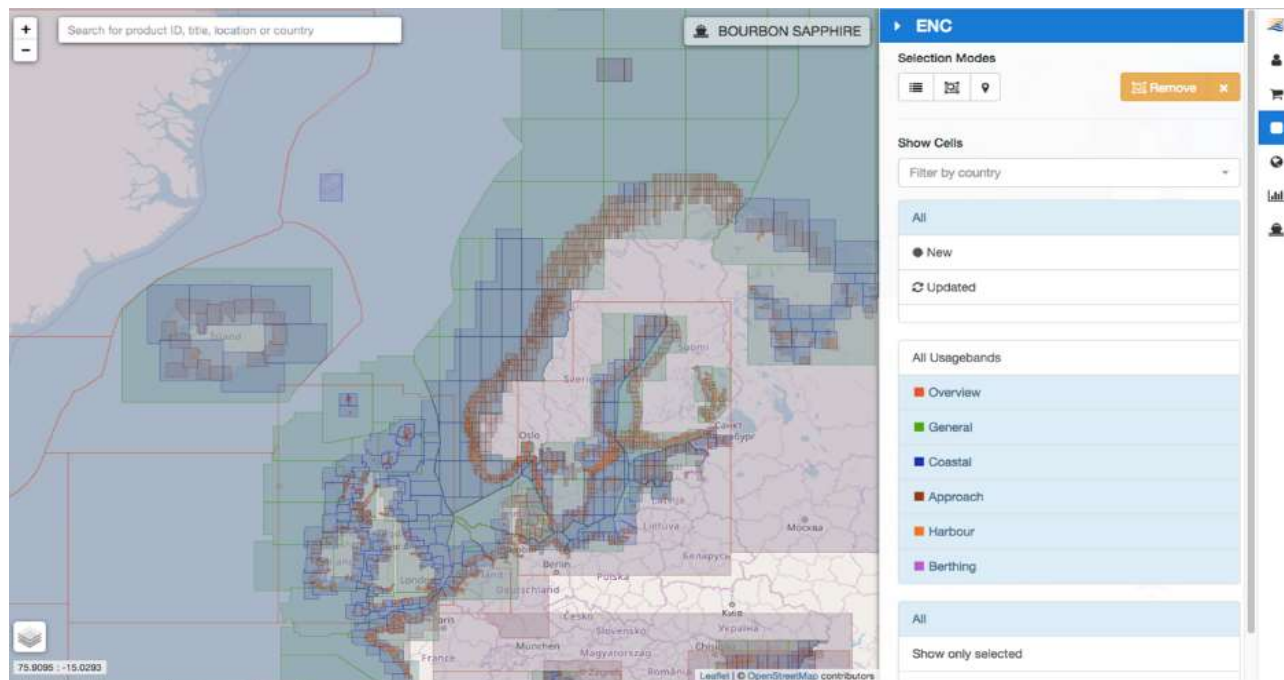


Financial Issues

- New financial model introduced in 2017
- Quarterly royalty payments
- Fixed fee pr. ENC transaction
- Transaction fee commercial transactions: \$1,0
- Transaction fee national transactions: \$1,5
- Transaction fee national services to non-PRIMAR members: \$2,3

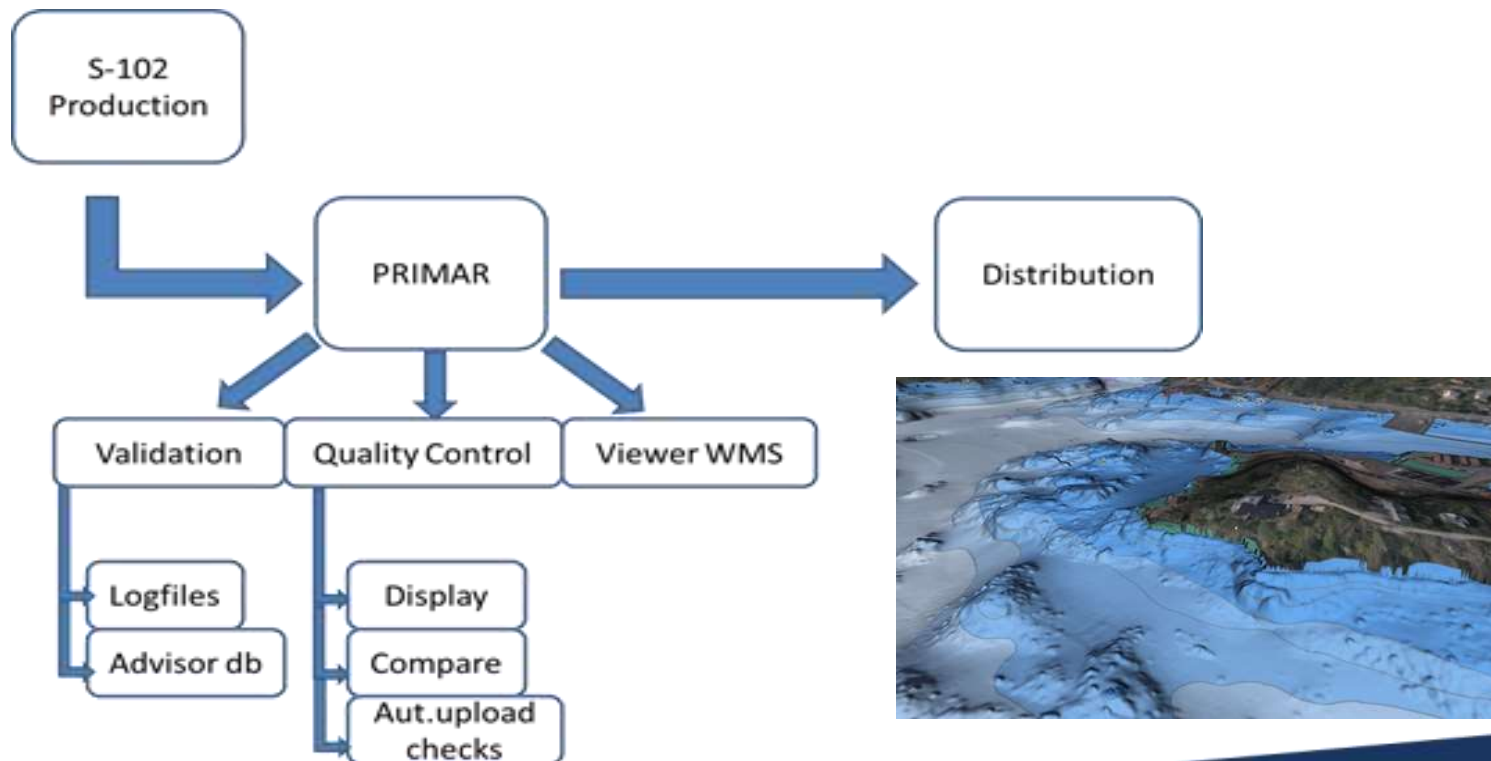
Technology Development

- Development of next generation of the PRIMAR Chart Catalogue completed. From Java to Web with improved functionality.



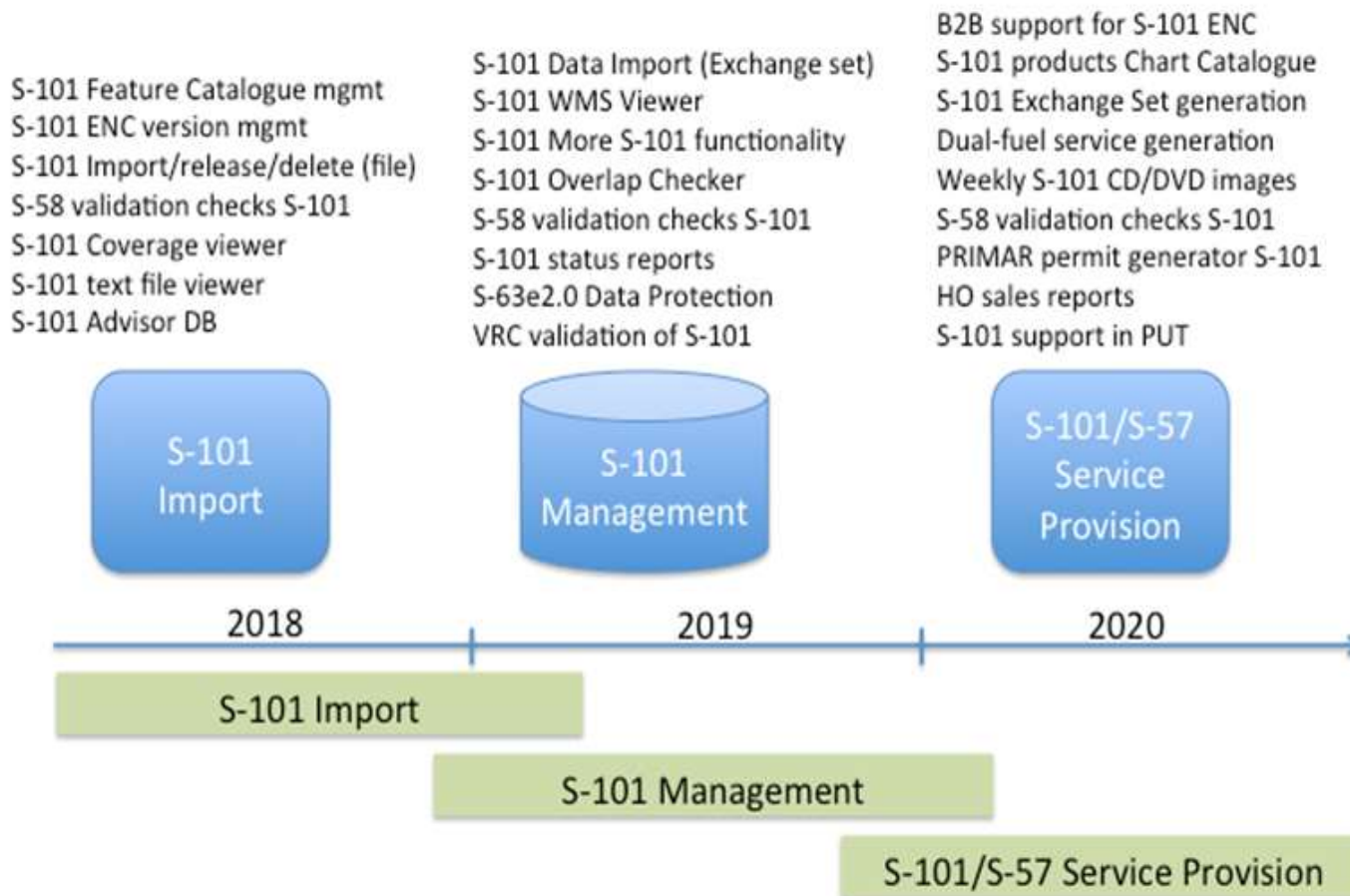
Technology Development

- S-102 data distribution. Awaiting S-63 ed. 2.0.
- Demonstrator for the use of S-102 in an operational environment: www.s-102.no
- PRIMAR will support development of S-63 ed. 2.0 standard.



Technology Development

- PAC 24 approved S-101 development



Thank you for your attention
Questions?

www.primar.org