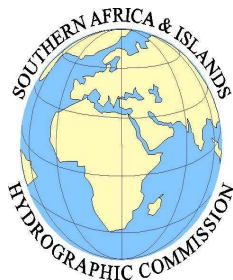


Tel: +27 21 7872412  
Fax: +27 21 7872233  
Email: hydrosan@iafrica.com



South African Navy  
Hydrographic Office  
Private Bag X1  
Tokai  
7966  
REPUBLIC OF SOUTH AFRICA  
*13 May 2010*

*File ref: FOF/HYD/R/320/19/1*

**SAIHC Letter No. 2/2010**

**To:** Directing Staff, IHB

**Subject:** **PROPOSED NEW INT CHARTS FOR REGION 'H'**

SAIHC Letter No. 1/2010 conveyed a proposal by South Africa that three South African National charts, which provide improved approach coverage to hub ports and facilities, be incorporated in the IHO INT Chart Scheme for Region 'H'. Details and location of these charts are provided in Annexes A, B and C.

I am pleased to report that no objection to this proposal has been expressed by the members of SAIHC with charting responsibility in Region 'H'. Portugal, France and the United Kingdom provided replies, all strongly supportive of the proposal. As a result, it is recommended that the inclusion of the new INT 2673, INT 7533 and INT 7563 in the scheme be approved and that IHO Publication M-11 be amended accordingly.

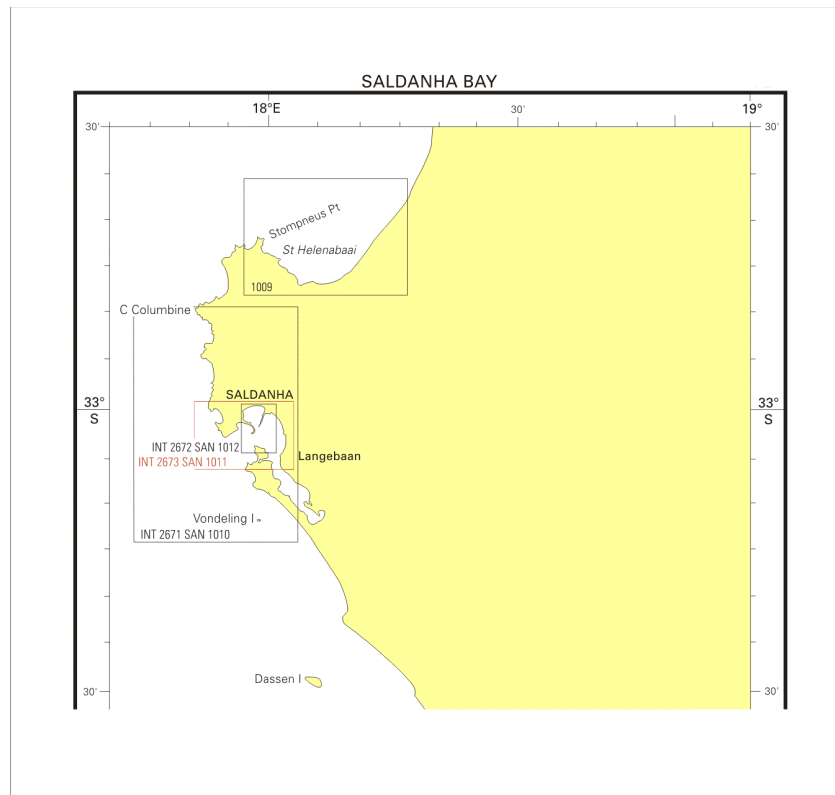
Yours sincerely

Chairman Southern Africa & Islands Hydrographic Commission (SAIHC)

Enclosures: Annex A – Proposed New Chart INT 2673  
Annex B – Proposed New Chart INT 7533  
Annex C – Proposed New Chart INT 7563

**PROPOSED NEW CHART INT 2673 – DETAILS**

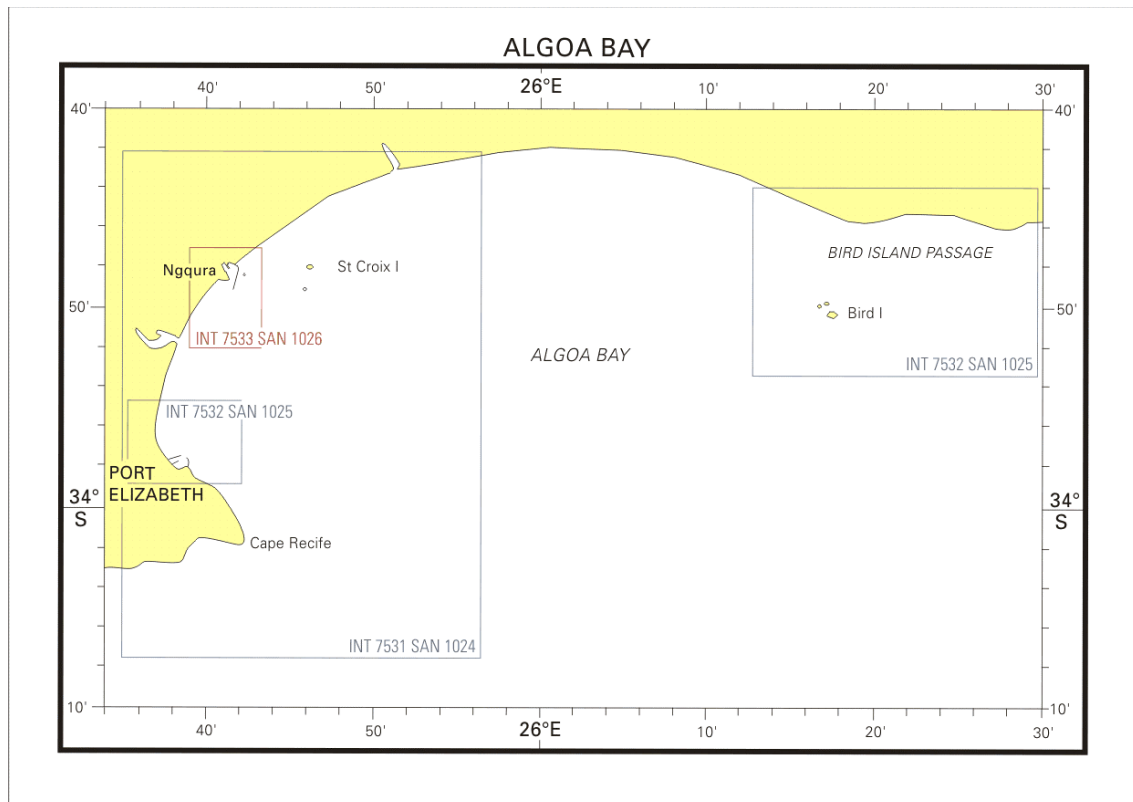
<b>SA Chart Number</b>	<b>SAN 1011</b>	
<b>Producer</b>	South Africa	
<b>Chart Title</b>	Entrance to Saldanha Bay	
<b>Chart Type</b>	New Edition	
<b>Datum</b>	WGS 84	
<b>Chart Limits – WGS 84 values</b>		
<b>Scale</b>	1:20 000 at 33°03'S	
<b>Projection</b>	Mercator	
<b>Chart Limits (NE)</b>	32°59' 24"S	018°03' 24"E
<b>Chart Limits (SW)</b>	33°06' 21"S	017°51' 00"E
<p>The Port of Saldanha is covered by two INT Charts, an inner harbour plan and an outer approach chart. INT 2671 at 1:50 000 serves its purpose as an approach chart but does not adequately cover the entrance. INT 2673 at large scale 1:20 000 would provide better coverage and provide safe passage through the entrance to the port.</p>		



**PROPOSED NEW CHART INT 7533 – DETAILS**

<b>SA Chart Number</b>	<b>SAN 1026</b>	
<b>Producer</b>	South Africa	
<b>Chart Title</b>	Ngqura Harbour	
<b>Chart Type</b>	New Chart	
<b>Datum</b>	WGS 84	
<b>Chart Limits – WGS 84 values</b>		
<b>Scale</b>	1:10 000 at 33°50'S	
<b>Projection</b>	Mercator	
<b>Chart Limits (NE)</b>	33°47' 00"S	025°43' 18"E
<b>Chart Limits (SW)</b>	33°52' 00"S	025°39' 00"E

A new chart of the recently developed new deep water commercial Port of Ngqura, which has opened in October 2009 and has developed into an important South African hub port. The existing INT 7531 at 1:50 000 fully covers the approach to both the Ports of Port Elizabeth and Ngqura. INT 7533 will provide detailed harbour information as a large-scale 1:10 000 INT chart.



**PROPOSED NEW CHART INT 7563 – DETAILS**

<b>SA Chart Number</b>	<b>SAN 1029</b>	
<b>Producer</b>	South Africa	
<b>Chart Title</b>	Approaches to Durban – Oil Terminal SBM	
<b>Chart Type</b>	New Chart	
<b>Datum</b>	WGS 84	
<b>Chart Limits – WGS 84 values</b>		
<b>Scale</b>	1:30 000 at 30°00'S	
<b>Projection</b>	Mercator	
<b>Chart Limits (NE)</b>	29°55' 00"S	031°10' 00"E
<b>Chart Limits (SW)</b>	30°05' 18"S	030°52' 00"E
<p>At revision, the scale of INT 7561 was reduced from 1:25 000 to 1:30 000 slightly extending the chart coverage mainly eastward and southward. The wider area allows for better approach and Vessel Traffic Service (VTS) coverage to the Port of Durban. Similar revision to new INT 7563 at the same scale, mainly eastward and increased chart overlap, will provide for a better approach to both the Single Buoy Mooring (SBM) and the Port of Durban.</p>		

