



KONGSBERG  
KONGSBERG MARITIME

# OPTIMIZACION DE TOMA DE DATOS BATIMETRICOS

Vicente Carrasco  
Jefe de Ventas

Kongsberg Maritime SUBSEA para Sudamérica

KONGSBERG PROPRIETARY: This document contains KONGSBERG information which is proprietary and confidential. Any disclosure, copying, distribution or use is prohibited if not otherwise explicitly agreed with KONGSBERG in writing. Any authorised reproduction in whole or in part, must include this legend.  
© 2018 KONGSBERG – All rights reserved.

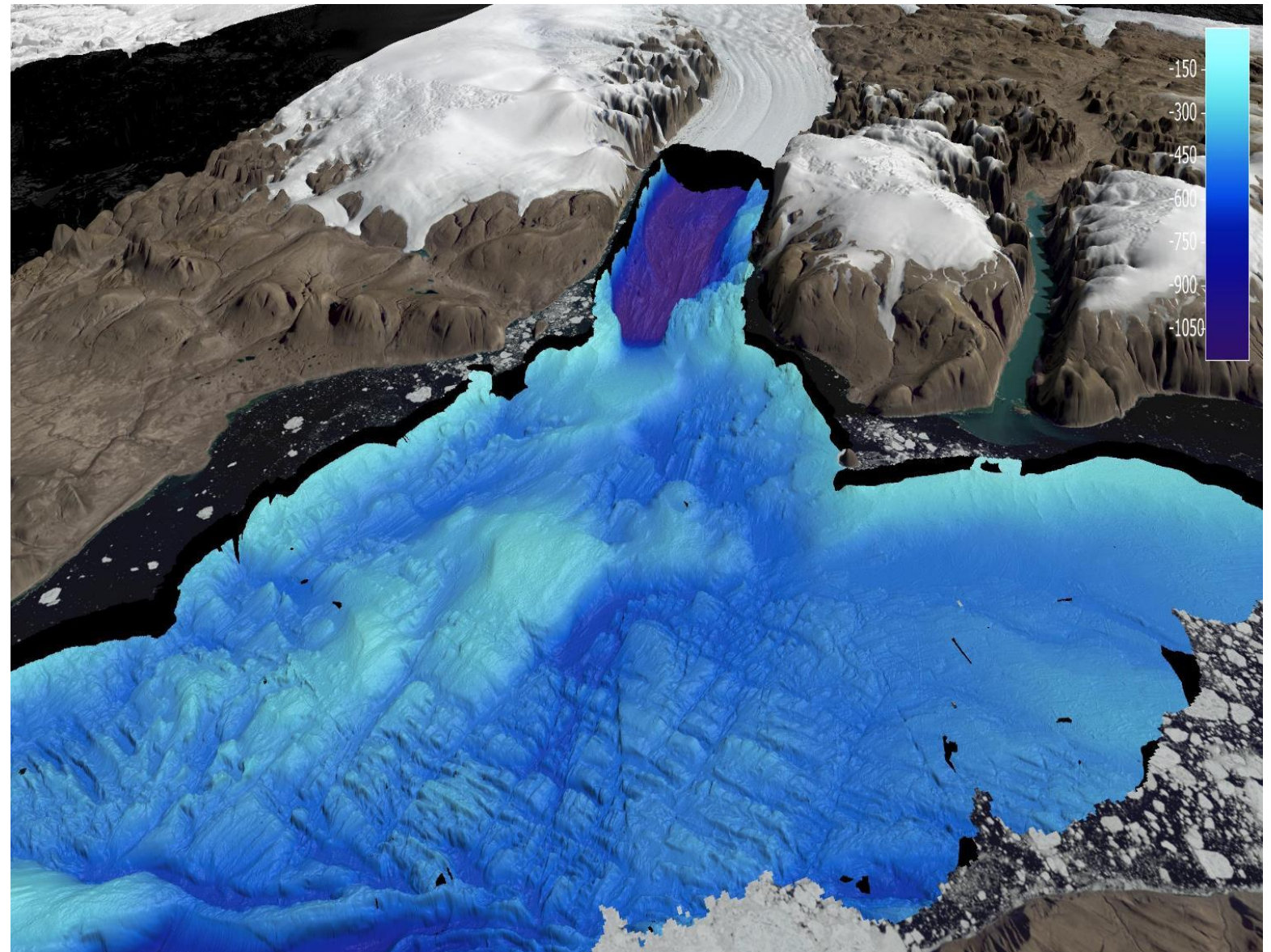
26/04/2019



KONGSBERG

# Agenda

- Introducción
- Resolución/  
Productividad
- Autonomía
- Mapping Cloud





KONGSBERG

# WE DELIVER SOLUTIONS

From deep sea to outer space

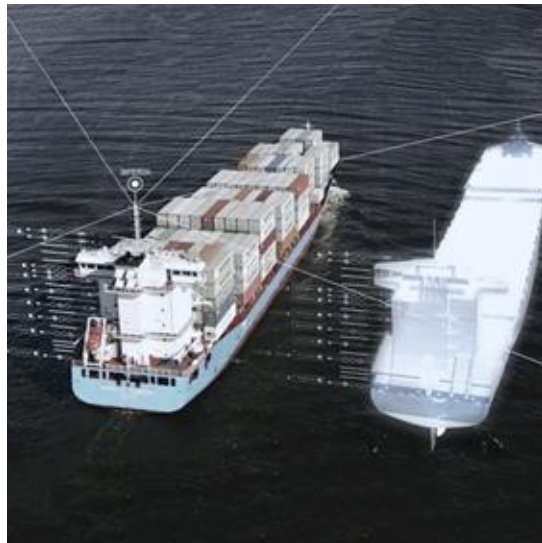




KONGSBERG

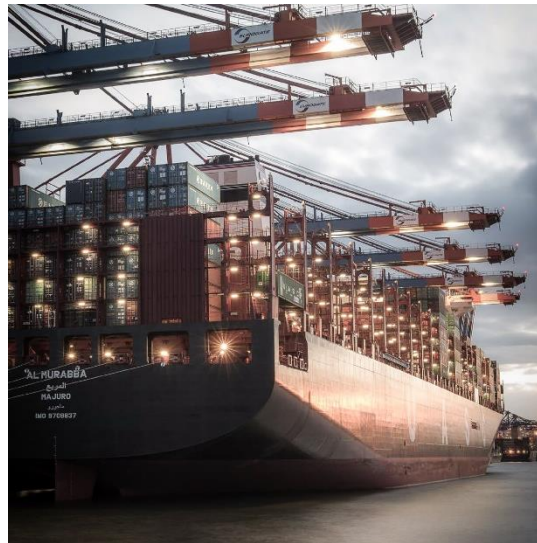
# Business Areas

Technology is our common core



## KONGSBERG DIGITAL

Maritime simulation  
Industrial digitalization



## KONGSBERG MARITIME

Seaborne transportation  
Robotics and Sensors  
Offshore, Oil & Gas



## KONGSBERG DEFENCE & AEROSPACE

Defence  
Space and Surveillance



KONGSBERG

# The Broadest Portfolio of Products

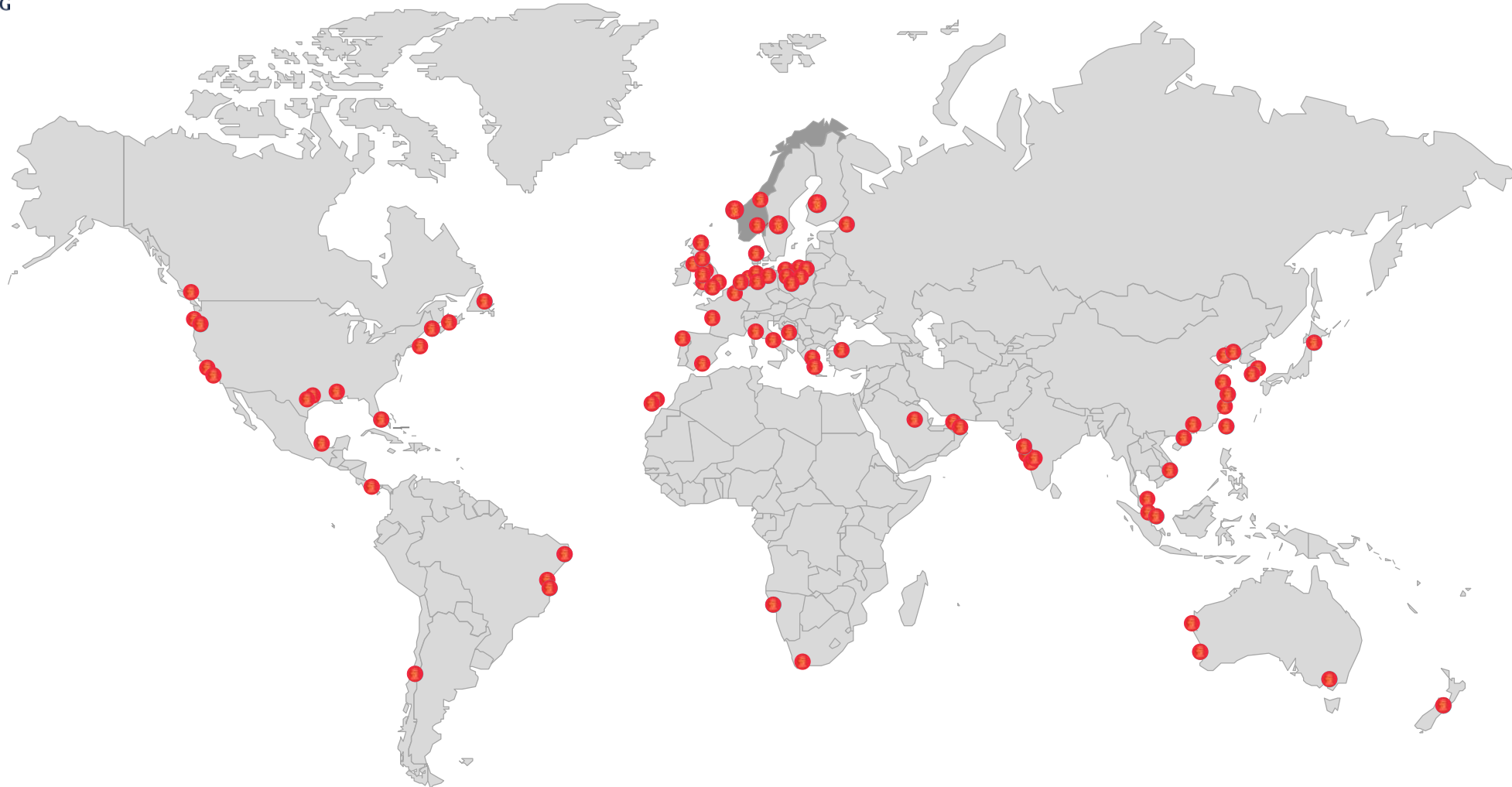
Throughout the entire maritime industry





KONGSBERG

# Our Global Reach





KONGSBERG

# We are the Ocean Experts

80% of our business directly relates to the sea





KONGSBERG

# The Maritime Industry is Changing



**COST OPTIMIZATION**

**DIGITALIZATION**

**SUSTAINABILITY**

**SIZE MATTERS**

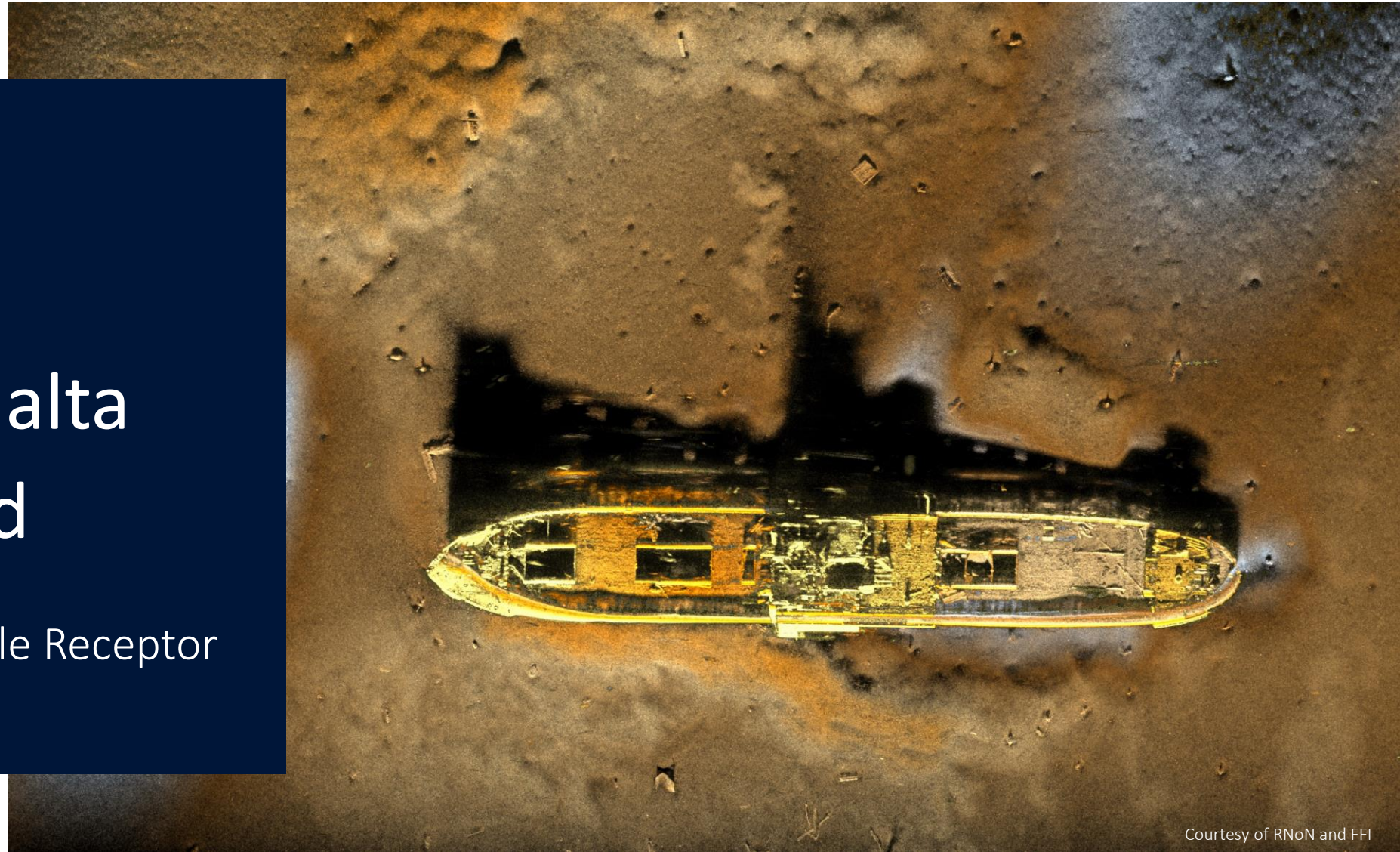




KONGSBERG

# Datos de alta calidad

HISAS 1032 con Doble Receptor



Courtesy of RNoN and FFI

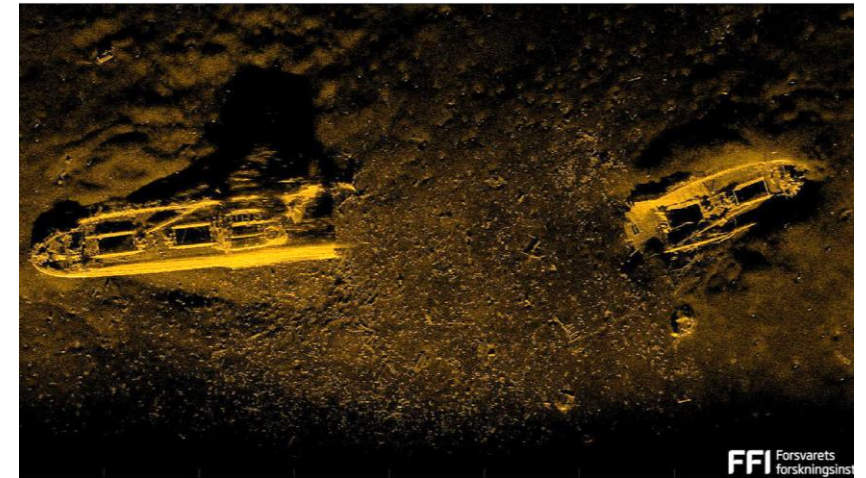


KONGSBERG

# HUGIN Superior

Best quality data collected in the most safe and cost effective manner

- 6000 m depth rating
- Superior data coverage
- Superior resolution
- Superior position accuracy
- Superior endurance





KONGSBERG

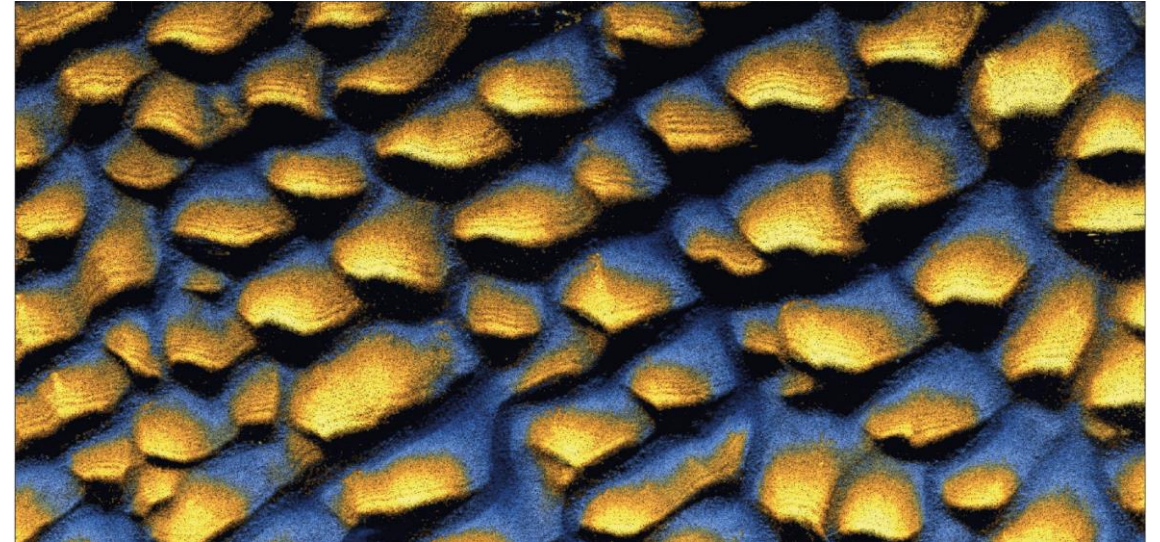
# Cobertura de datos

HISAS 1032 Doble Receptor: cobertura de área mejorada para imágenes y batimetría



## IMAGEN SAS

Imágenes de alta resolución con alcances de hasta 500 m a cada lado de la AUV, que proporcionan una cobertura total de hasta 1000 m a 2,5 nudos o 600 m a 4 nudos



## BATIMETRIA

Batimetría SAS en una franja de 1 km que produce una resolución de 20 x 20 x 20 cm en rangos de 200 m, duplicando la cobertura de área para levantamientos hidrográficos

El nuevo procesamiento HISAS de datos genera batimetrías e imagen SAS del alcance completo, la cobertura de área aumenta hasta 4,5 km<sup>2</sup> por hora



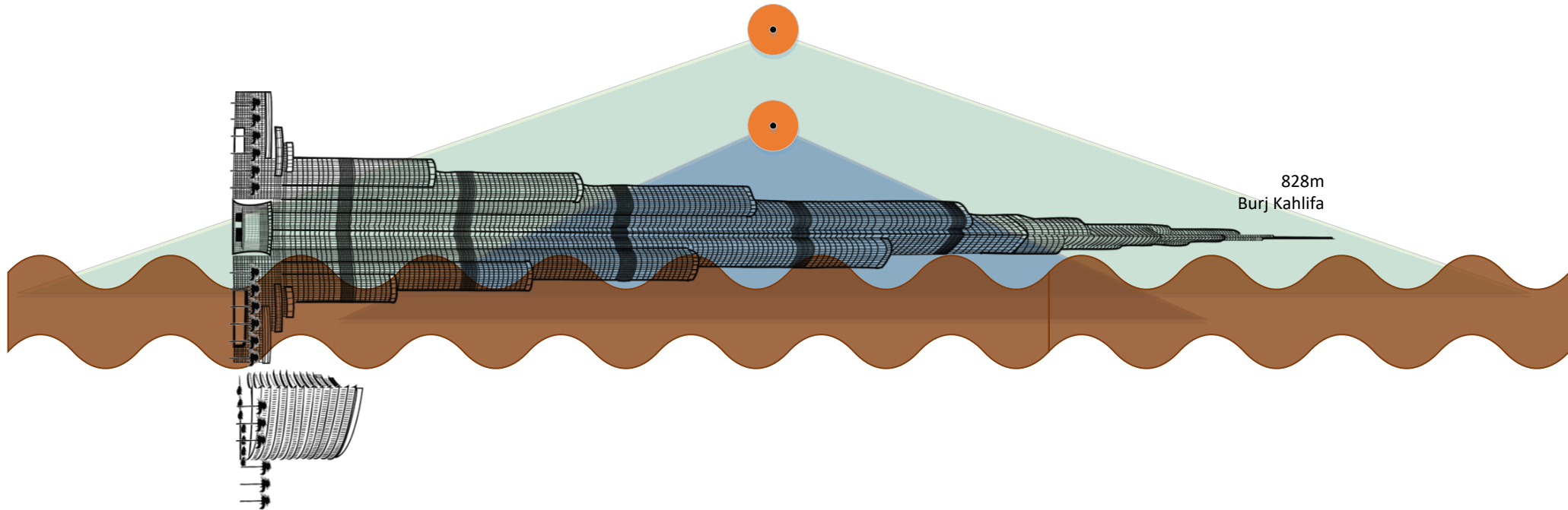
KONGSBERG

# Área de Cobertura del HUGIN Superior

HISAS 1032



Nuevo HiSAS 1000m



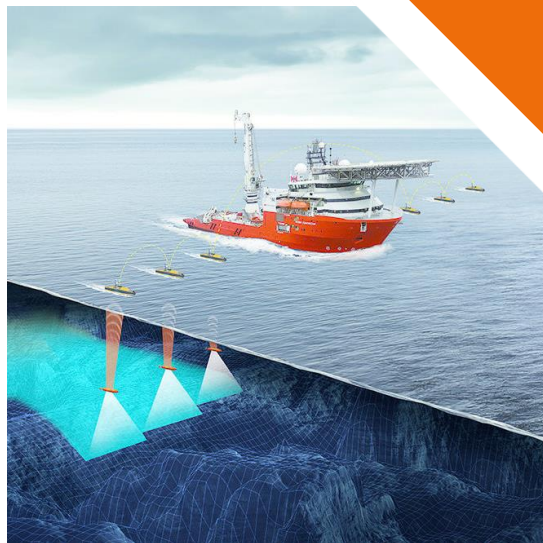


KONGSBERG

## Force Multipliers

La aplicación eficiente del uso de varios sistemas operando simultáneamente es el resultado del descubrimiento del ARA San Juan

Cubre una gran area en menos tiempo





KONGSBERG

# Aplicación de Búsqueda y Rescate

## PERFORMANCE

### OCEAN INFINITY LOCATES THE MISSING ARGENTINIAN SUBMARINE, ARA SAN JUAN 17/11/2018

Ocean Infinity, the seabed exploration company, confirms that it has found ARA San Juan, the Argentine Navy submarine which was lost on 15 November 2017.

In the early hours of 17 November, after two months of seabed search, Ocean Infinity located what has now been confirmed as the wreckage of the ARA San Juan. The submarine was found in a ravine in 920m of water, approximately 600 km east of Comodoro Rivadavia in the Atlantic Ocean.





KONGSBERG

## Aplicación de Investigación de Iceberg en Antártica

Scientists aboard the icebreaker Nathaniel B. Palmer this month are getting their first up-close look ever at a massive Antarctic glacier that could play a big role in global sea level rise.





KONGSBERG

# A range of Portable Hydrographic Systems

Open to suggestions for new ways to integrate



## POLE MOUNTED

GeoSwath  
M3 Sonar  
EM 2040P  
EM 2040C



## C.S.V MOUNTED

GeoSwath  
M3 Sonar  
EM 2040P  
EM 2040C  
Geopulse Compact



## USV MOUNTED

GeoSwath  
M3

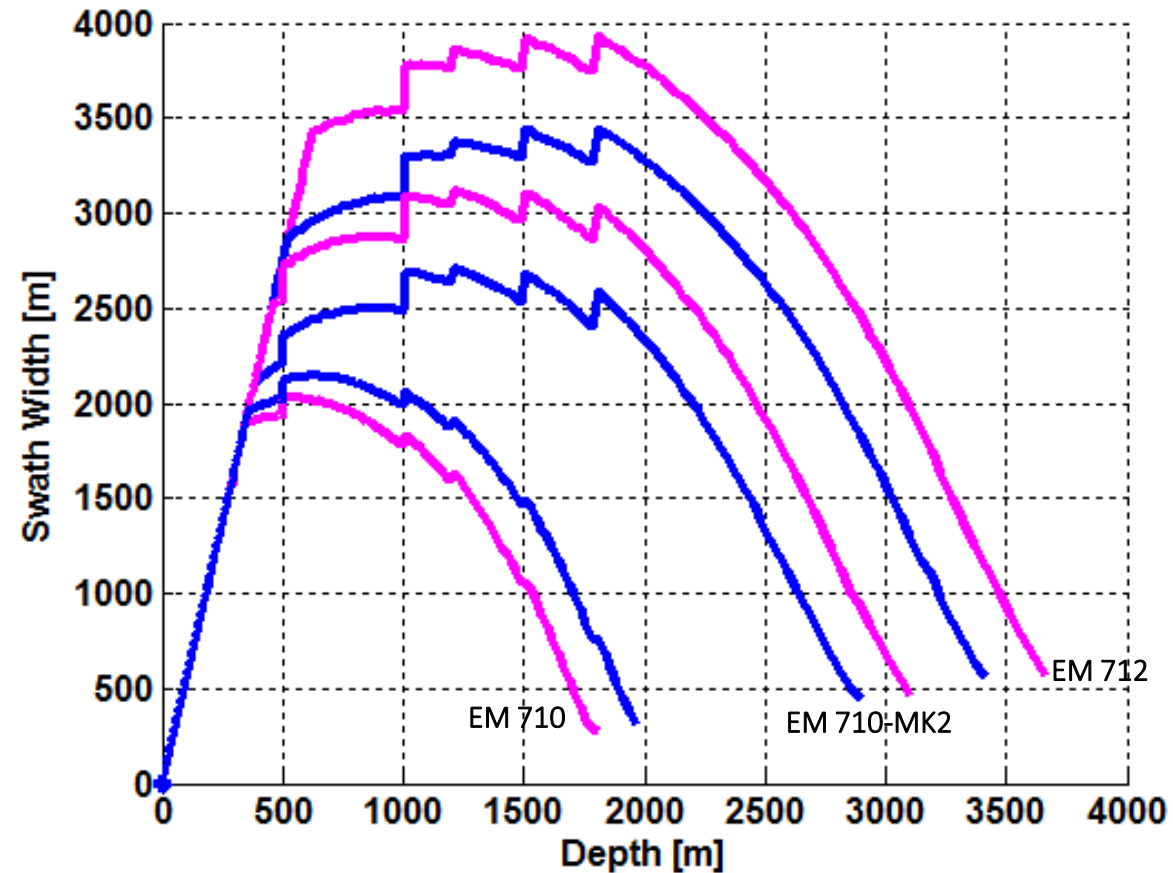




KONGSBERG

## EM 710, EM 710-MK2 y EM 712 Comparativa coberturas

- Sistema 0.5° \* 1°
- Magenta – Verano
- Azul – Invierno
- NL= 45 dB para EM 710 y EM 710-MK2
- NL= 35 dB para EM 712





KONGSBERG

# Productividad

- Profundidad de trabajo >70 % de Actividad
- Cobertura de los diferentes modelos
- Solape entre líneas
- Diferencia de precios entre modelos
- Estimación de calculos de operación del buque
- Conclusión de detrmínación del sistema óptimo condierando el ahorro en costes operativos

26.04.2019

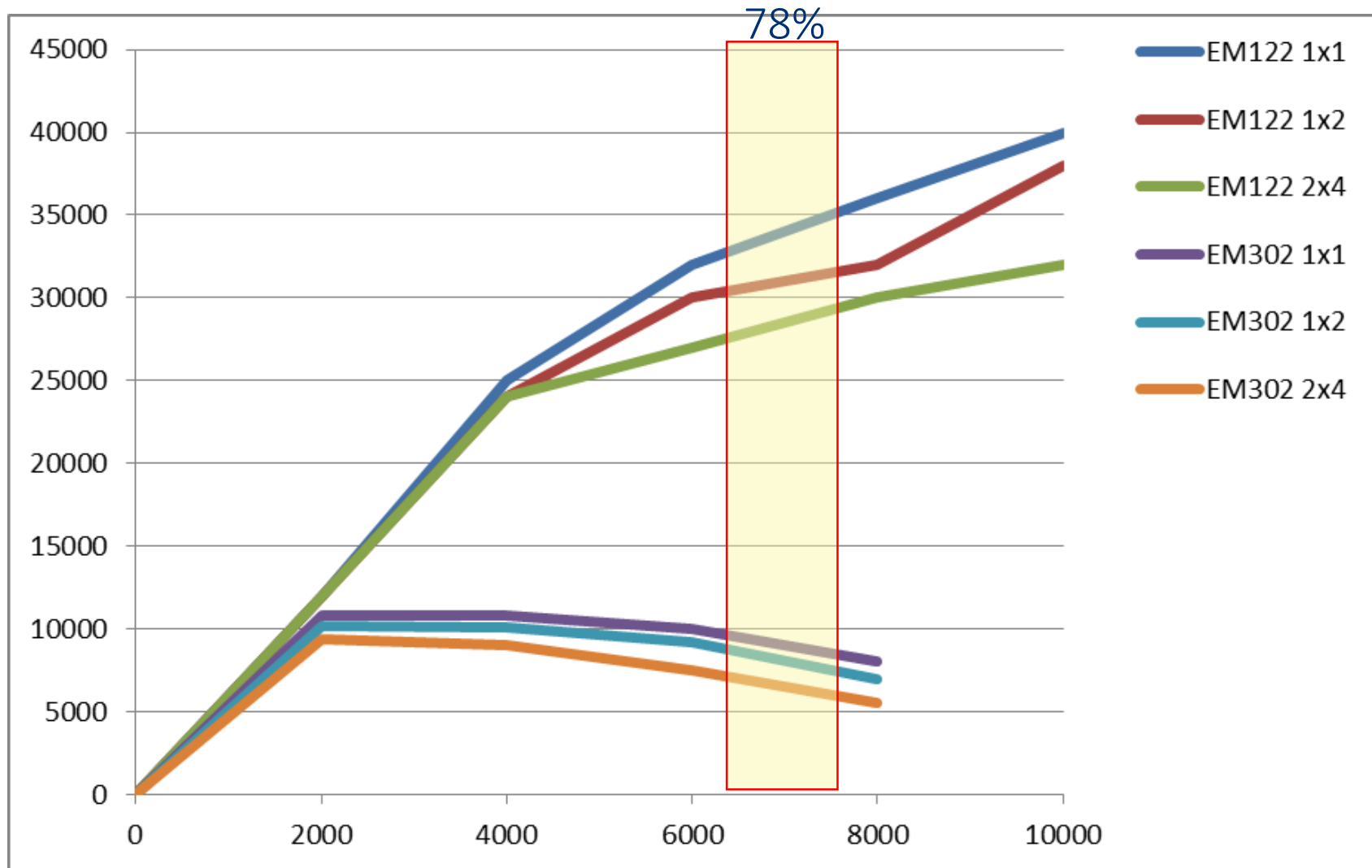
WORLD CLASS - through people, technology and dedication

Page 18



KONGSBERG

# EM122 vs EM302 cobertura





KONGSBERG

# EM 122 cobertura

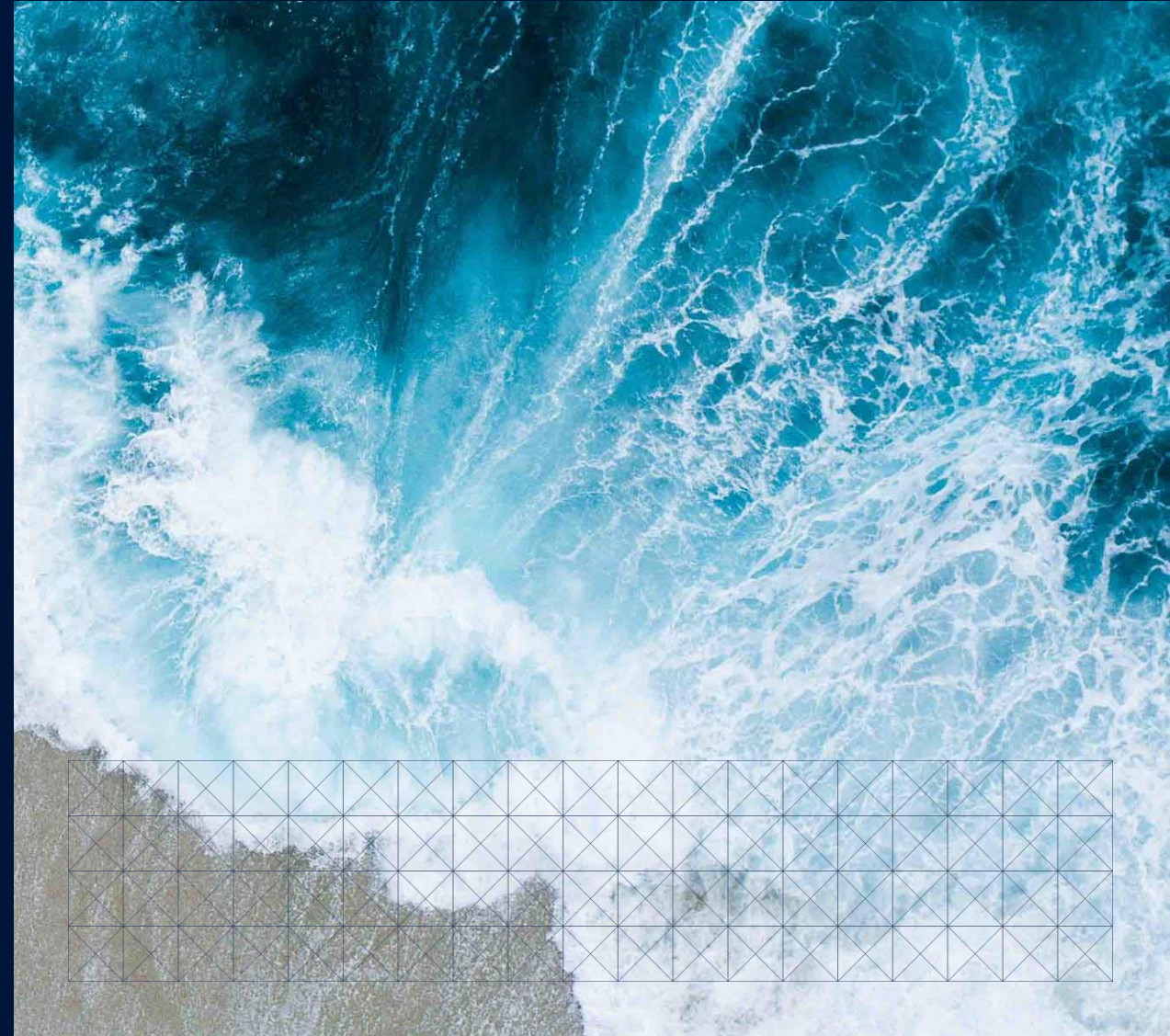
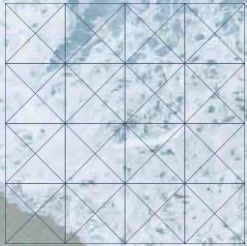
	EM302	EM122	EM302	EM122	EM302	EM122	EM302	EM122
	Crosstrack coverage	Crosstrack coverage	4 knots	4 knots	24 hours	24 hours	45 days	45 days
	In meters	In meters	KM2/h	KM2/h	KM2/day	KM2/day	KM2 total	KM2 total
	1x1	1x1	1x1	1x1	1x1	1x1	1x1	1x1
<b>2000</b>	10800,00	12000,00	80,01	88,90	1920,15	2133,50	86406,91	96007,68
<b>4000</b>	10800,00	25000,00	80,01	185,20	1920,15	4444,80	86406,91	200016,00
<b>6000</b>	10000,00	32000,00	74,08	237,06	1777,92	5689,34	80006,40	256020,48
<b>8000</b>	8000,00	36000,00	59,26	266,69	1422,34	6400,51	64005,12	288023,04

Para que la EM302 cubra 288,023 km se requieren 202 días de campaña esto supone 157 días extra.



KONGSBERG  
KONGSBERG MARITIME

# ENHANCE CAPABILITIES AUTONOMY

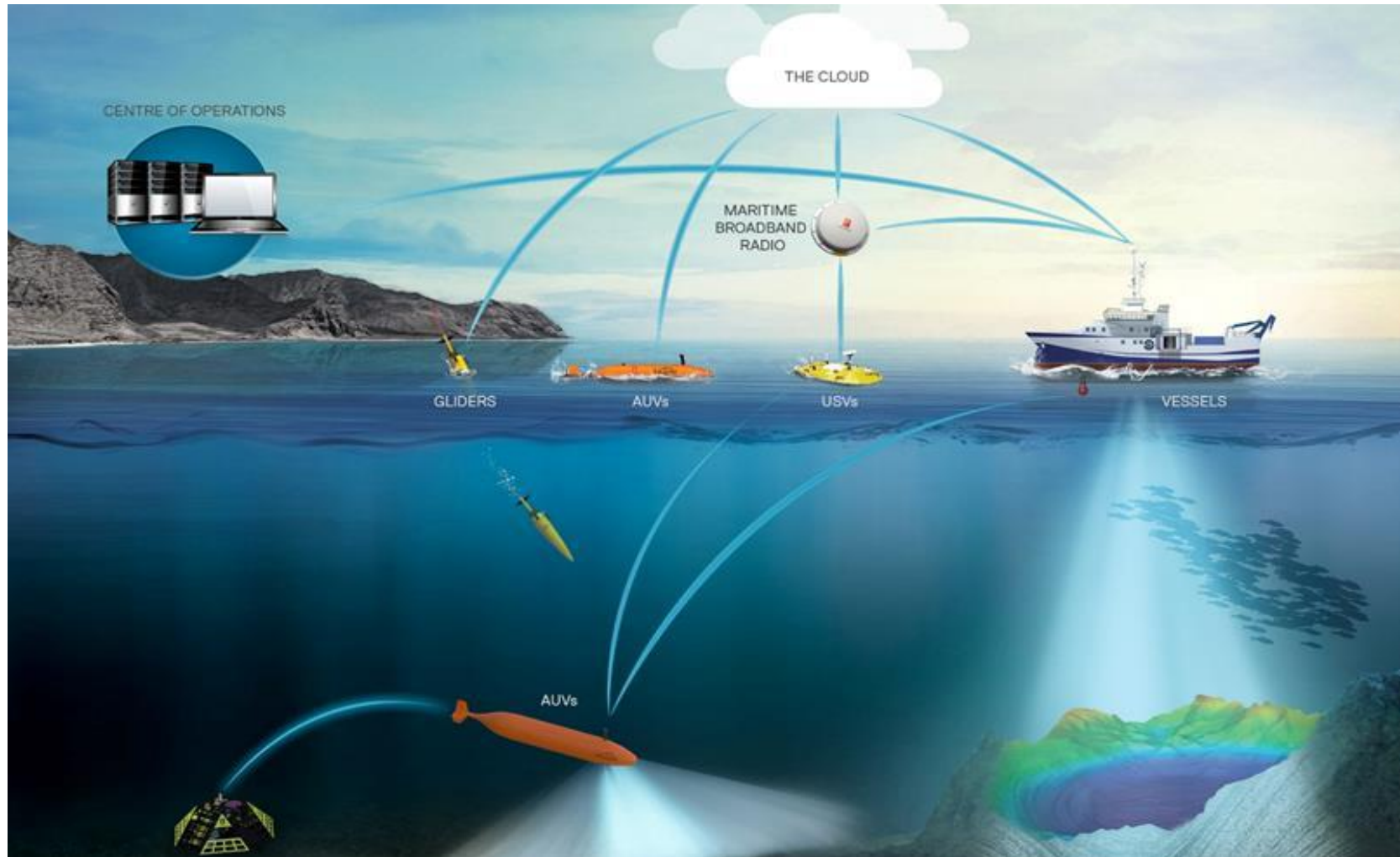




KONGSBERG

# Autonomy

Improved operation and safety at lower cost





# MARITIME BROADBAND RADIO

# Operativa comun en tempo real, anywhere!



KONGSBERG



Vessel



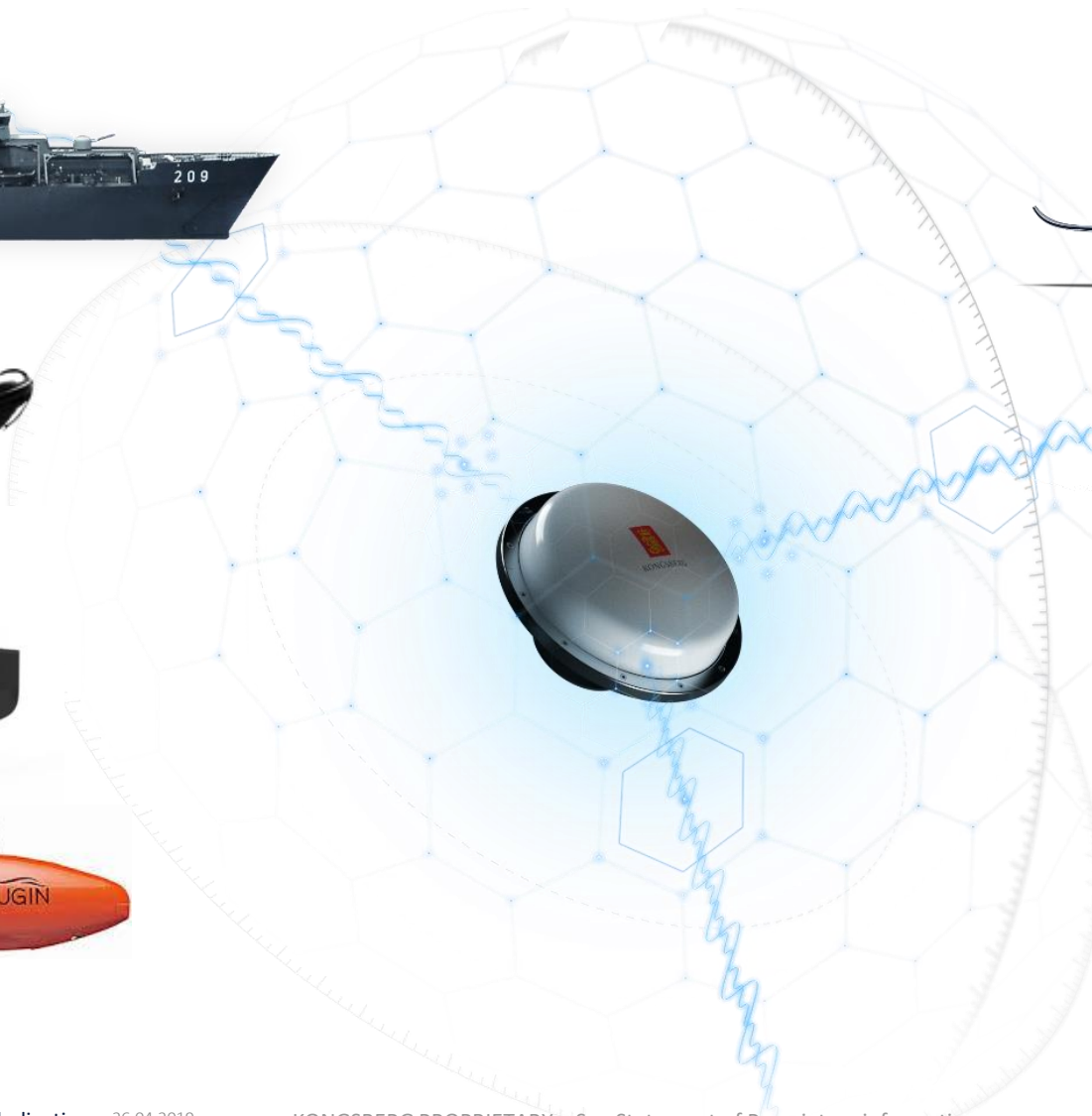
RIB



ASV



UUV



Aircraft



UAV



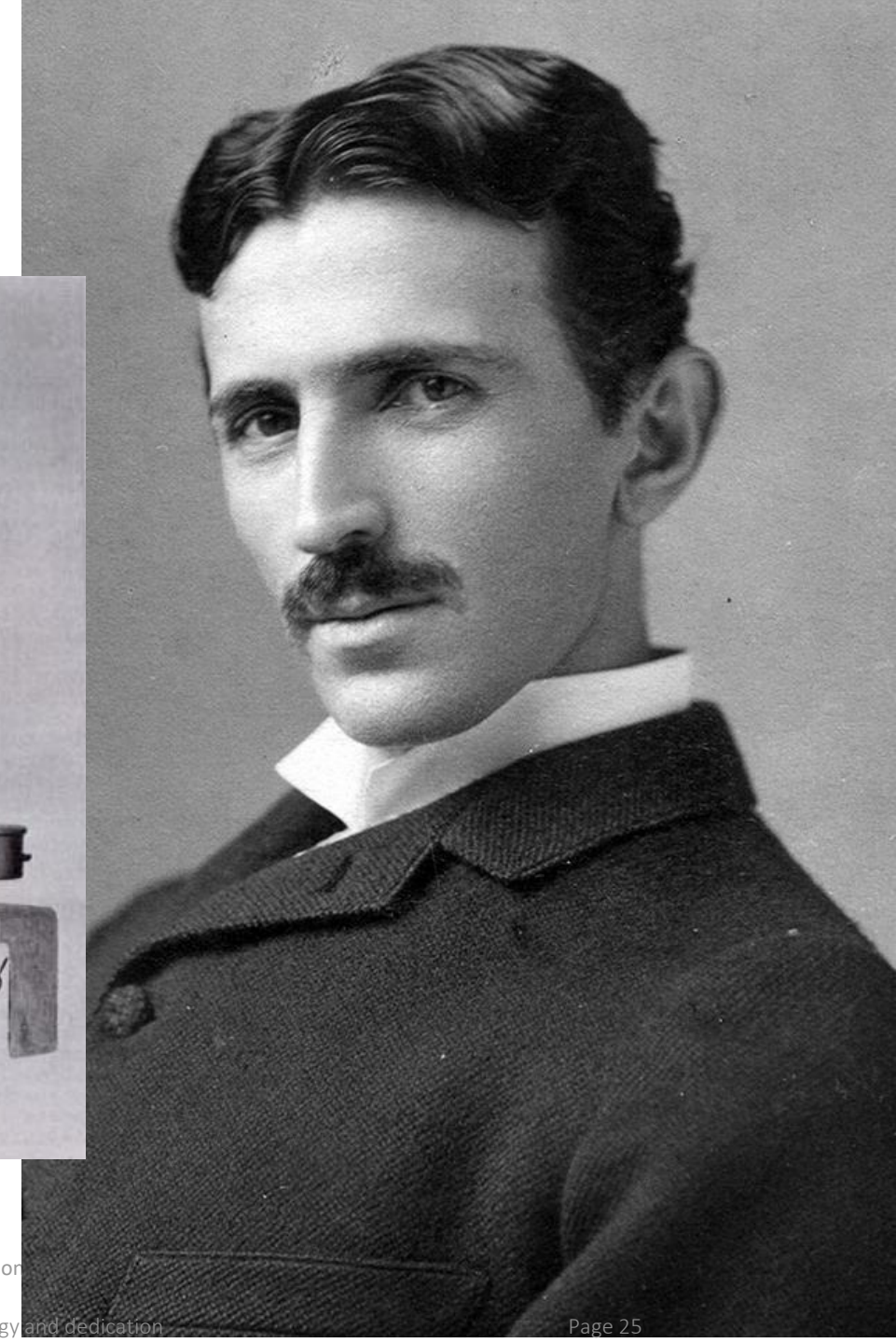
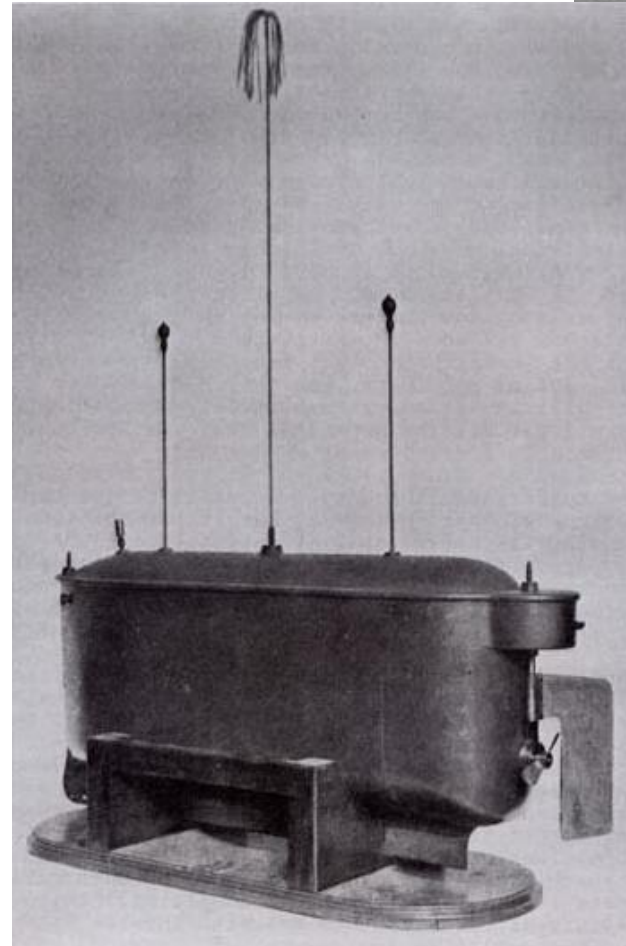


KONGSBERG

## A brief history of Radio controlled Boat

Tether-less control made its first appearance in the 19<sup>th</sup> Century

- Nikola Tesla demonstrated a remote controlled boat during an exhibition at Madison Square Gardens in 1898
- In typical Tesla style, he convinced the audience they could control it with their thoughts!
- This was before the Radio was invented by Marconi brothers ?





# Kongsberg Maritime and AUVs, 26 years of development



1993: 110 nm dive



1997: First commercial survey



2001: Military demo



2003: SAS on AUV



2005: HISAS prototype trials



2007: HUGIN 1000

## Key Milestones: KM AUV Development

- 1993: HUGIN I - 110 nautical mile dive
- 1997: First commercial survey
- 2000: First commercial sale
- 2001: First Military demonstration
- 2003: SAS prototype on HUGIN
- 2005: HISAS prototype on HUGIN
- 2007: Introduction of HUGIN 1000 model
- 2012: 6 battery HUGIN introduced
- 2014: In-Mission SAS developed
- 2015: Depth record for HUGIN 4449 m (fully supervised)
- 2015: 800,000 line-km of commercial survey completed
- 2016: Magnetometer, colour camera & laser profiler introduced
- 2016: HUGIN rated to 6000 m developed
- 2017: Swarm of AUV, USV
- 2018: Resident AUV - Eelume

# Gama de Vehículos Autónomos Submarinos



## MUNIN 600

**KONGSBERG** Baja Logistica – Maletas de transporte, gruas de cubierta, etc

- Profundidad hasta 600 m Ø12.75"
- HISAS2040, EM2040P.
- Autonomía 10-12h.

## ▪ MUNIN+

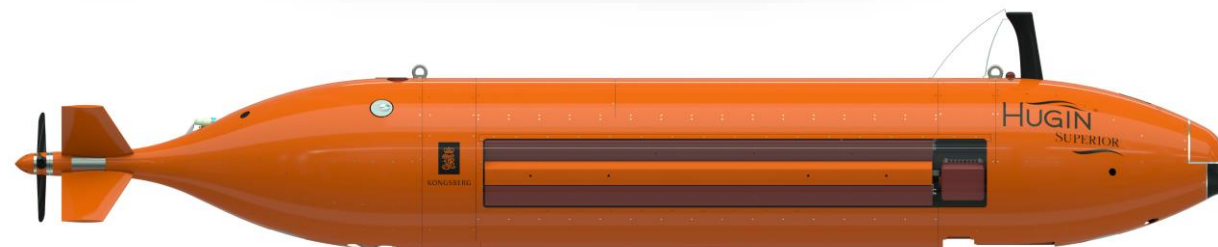
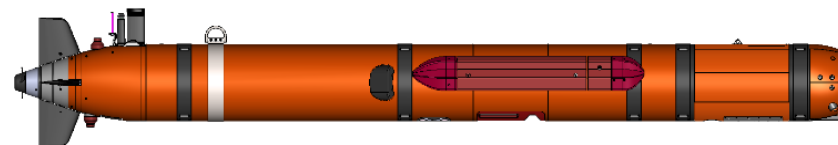
- Modular – Maletas peli.
- Profundidad hasta 1.500 m Ø19"
- HISAS2040, EM2040P, SBP, camara.
- Autonomía 24h.

## ▪ HUGIN

- Aguas profundas.
- Profundidad hasta 6000m .
- HISAS1032, EM2040, SBP, camara, laser, sensores medioambientales++.
- Autonomía 48h – 60 h.

## ▪ HUGIN SUPERIOR

- Aguas profundas.
- Profundidad hasta 6000m .
- HISAS1032 doble receptor, EM2040 MkII, SBP, camara, laser, sensores medioambientales++.
- Autonomía 52h – 72 h.





# K-MATE: Yara Birkeland

KONGSBERG

## Key Facts:

- Fully battery powered ship
- Prepare for remote control and fully autonomous operations
- Dimensions & Performance
  - LOA: >70 m
  - Beam: 15 m
  - Depth: 12 m
  - Draft: (full) 5m
  - Service speed: 6 Knots

## Purpose and Performance:

- To replace road journeys
- Sail within 3 ports
  - Herøya to Brevik: 7 nm
  - Herøya to Larvik 30 nm
- Controlled by:
  - YARA at Porsgrunn
  - Kongsberg Maritime

## Schedule:

- 2017: design finalized
- 2018 Delivery & testing with small crew
- 2019: Remote operation
- 2020: Fully autonomous operation

WORLD CLASS – Through people, technology and dedication

KONGSBERG PROPRIETARY - See Stat





KONGSBERG

# GeoSwath 4R USV

Vehículos Autónomos de Superficie - GeoSwath 4R USV ofrece mapeos de fondo simultáneamente batimetría y sonar de barrido lateral mediante una plataforma operada remotamente en superficie.





KONGSBERG

# K-MATE: Odin

## Proyecto:

- Desarrollo conjunto entre KM y FFI (Dept Desarrollo de la Defensa)
- Se puede manipular o operación remota
- Plataforma Multipropósito para investigación de la defensa
  - Hidrografía
  - Proyección de Medidas Contraminas
  - Lanzamiento y Recogida AUV
- Configurado para portar un AUV

## Equipos:

- Sistemas:
  - Dos motores
  - Ancla Electrónica
- Navegación, Comunicación y Prevención a la Colisión:
  - Sistema de Referencia Seapath 136
  - AIS 300
  - Radar, Camara & LIDAR
  - MBR – Radio de Banda Ancha
  - Iridium





# K-MATE: SEA-KIT Batimetria

KONGSBERG

## Dimensiones:

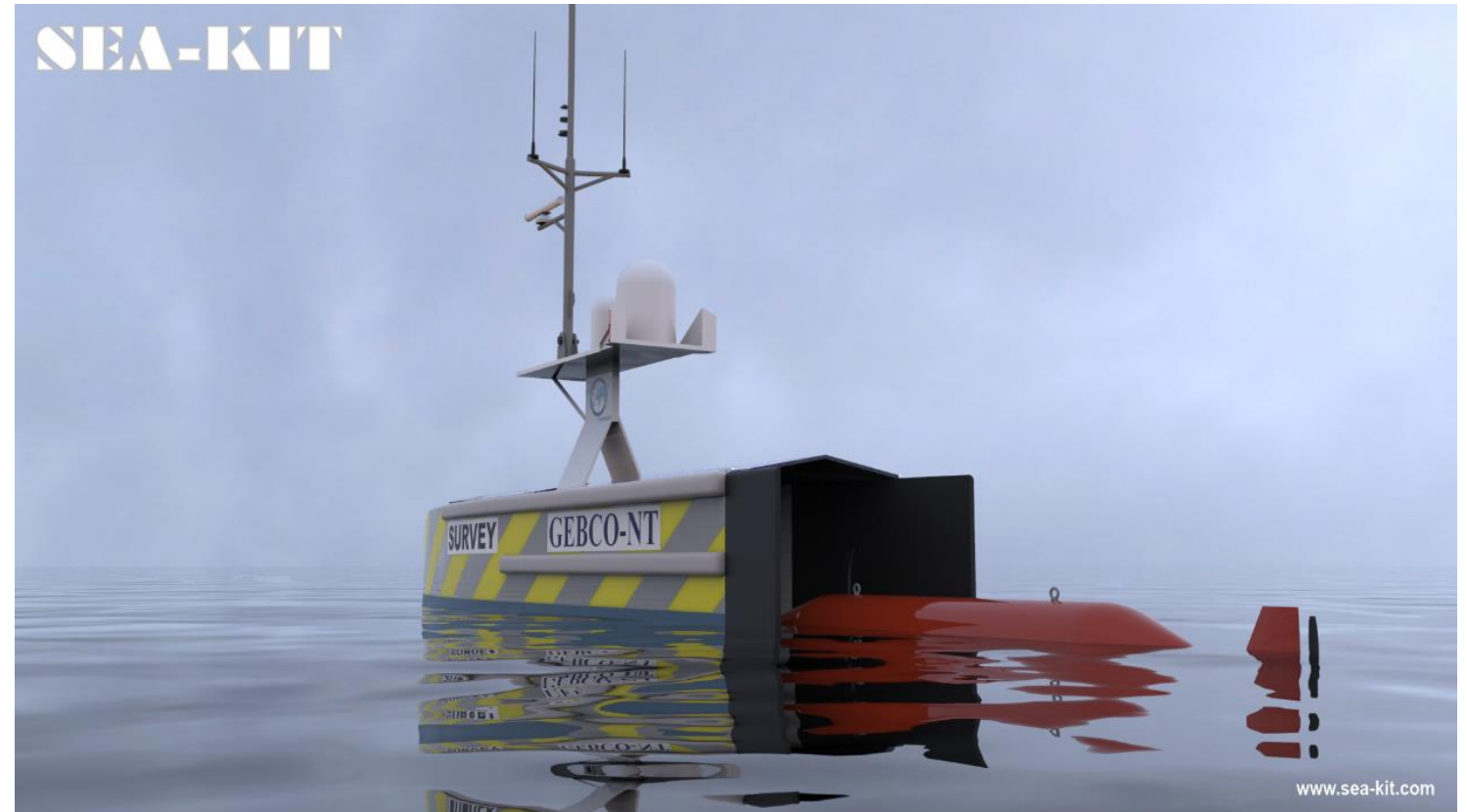
- Eslora: 11 m
- Manga: 3 m
- Altura: 3 m
- Diseñado para portar un HUGIN AUV

## Operación:

- Autonomía:
  - Estandar: >30 días
  - Mejorado: >300 días
- Velocidad: <8 Nudos

## Equipos:

- Sistemas:
  - Dos Generadores Diesel Electricos
  - Dos Helices de popa más una en proa
  - Ancla Electronica
- Navegación, Comunicación y Prevención de Colision:
  - Sistema de Referencia Seapath 136
  - AIS 300
  - Radar y Camara
  - MBR – Radio de Banda Ancha
  - INMARSAT & Iridium





KONGSBERG

# SOUNDER

SISTEMA USV








# SOUNDER

La clave esta en los datos



KONGSBERG



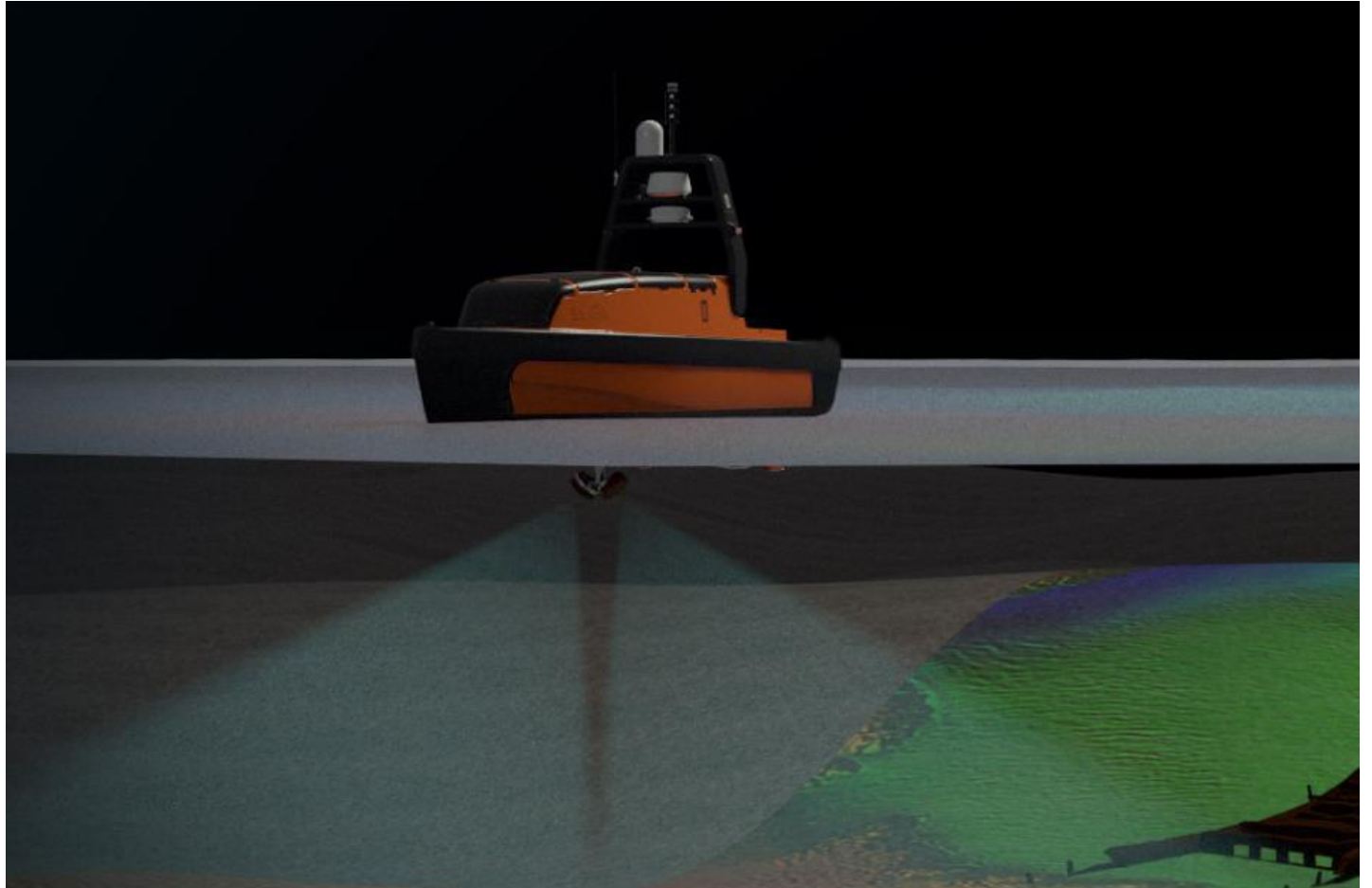
*El sistema USV Sounder proporciona  
detección y clasificación de bancos de peces  
a menos de \$50 de coste de combustible  
diarios*



KONGSBERG

## Aplicaciones de Mapeo

El sistema USV Sounder se puede equipar para aplicaciones de batimetría con sonda multihaz EM2040





KONGSBERG

# SOUNDER

## Sistema Completo

USV Sounder

Cerebro Autonomo K-MATE

Sistema de Lanzamiento y Recogida

Contenedores de transporte

Estacion de Operación en Tierra o a Bordo

Dirección de Flotas USV

Sensores de Montaje

Mantenimiento y conjunto de repuestos

Soporte 24/7-365 Internacional





KONGSBERG

## Percepción de la Situación y Previsión de Anti-Colisión

El sistema USV Sounder cuenta con un sistema de vanguardia para el análisis y conocimiento de la situación que permite evitar colisiones.





KONGSBERG

SCOTIA  
000224  
2009  
KONGSBERG  
TYPE  
P/MSD  
EUN.



KONGSBERG

# Sistema USV Sounder

## Especificaciones Técnicas

### Operación

Autonomía: 10 días @ 4 nudos (300L Tanque de Combustible)

Velocidad Maxima: 12 nudos (Sin Carga)

Relación de Giro 15 m @ 11 knots

### Características Especiales

Moon pool

Guinche CTD

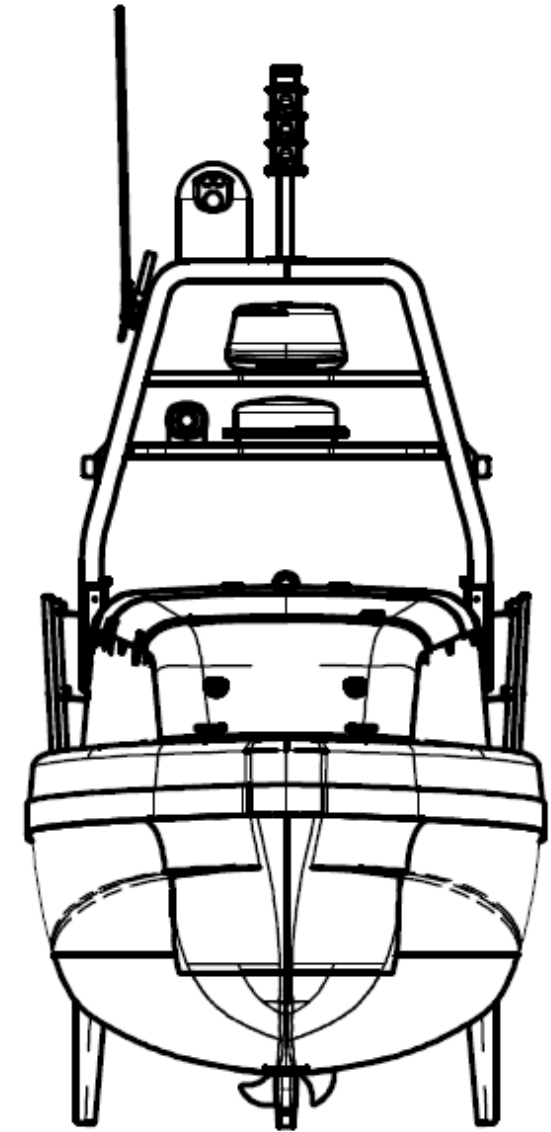
Refuerzo de Acero para equipos montados en proa

Mastil abatible

Diseño único para la estabilidad y la operación hidroacústica optima

Rack desmontable de 19' para equipamiento

Un único punto de enganche para carga y descarga

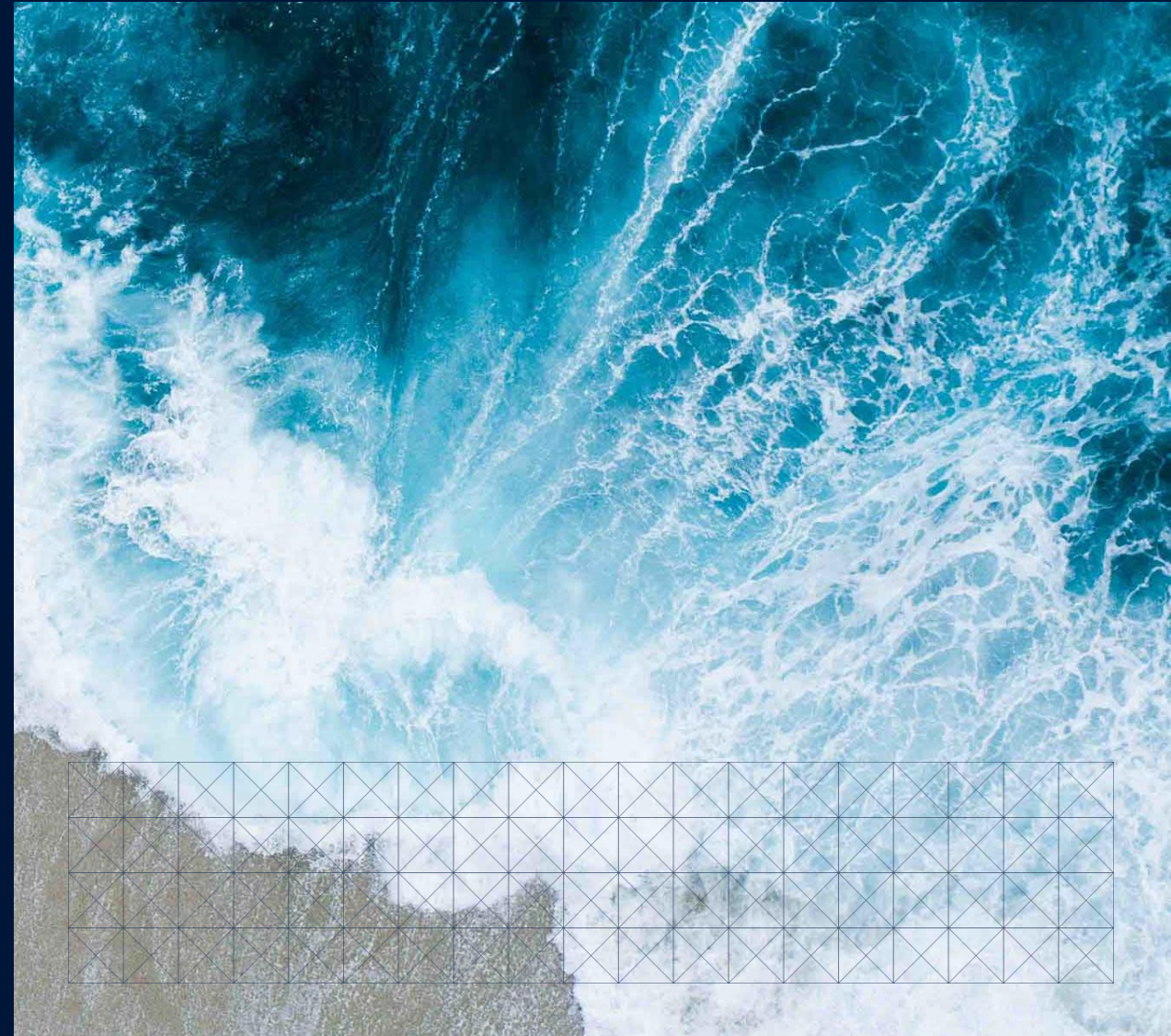
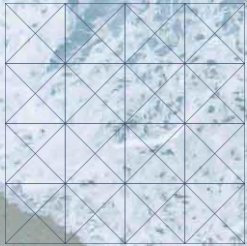


  
SOUNDER



KONGSBERG  
KONGSBERG MARITIME

STORAGE, PROCESS, VISUALIZE  
**KOGNIFAI**







KONGSBERG

# Kognifai

## Kongsberg's Open Digital Environment

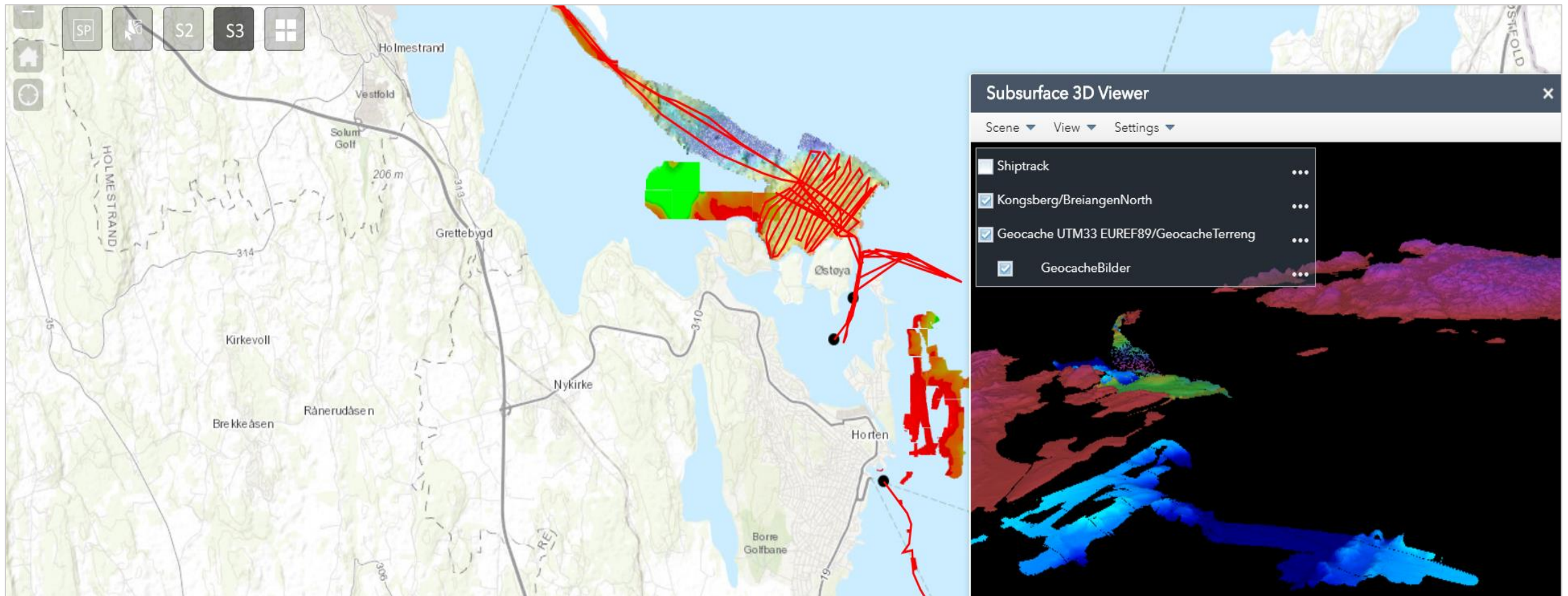
- Data upload
- Data sharing
- Combining data from many sources
- Big Data makes Machine Learning possible
- Scalable computer resources
- Easy access to Kognifai
- Secure storage
- Hybrid Cloud
- Software Development Kit for developers
- Virtual PC
- Processing on site/boat
- Reduce data volume to be transmitted into Storage
- Adapt data volume to available Internet bandwidth and cost



KONGSBERG

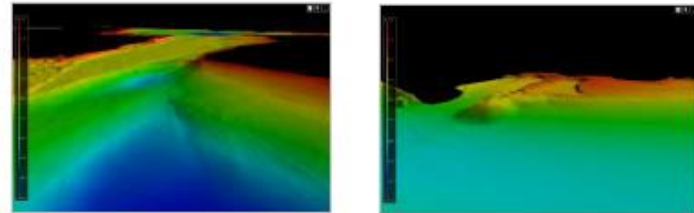
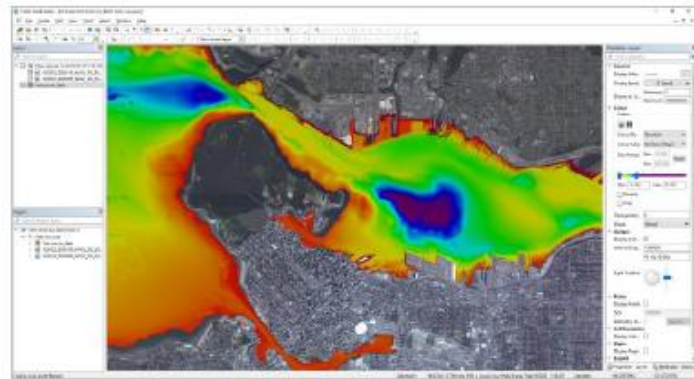
# Open Standards and Cloud Ecosystems

Handle, process, visualize and share vessel data and ocean data efficiently



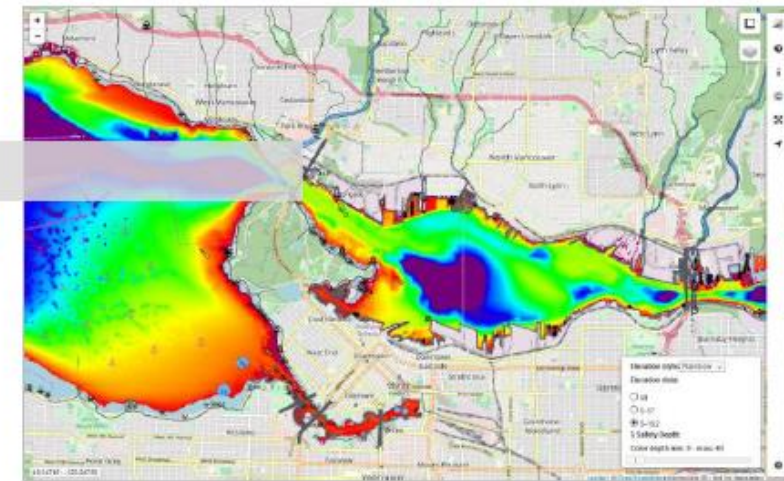
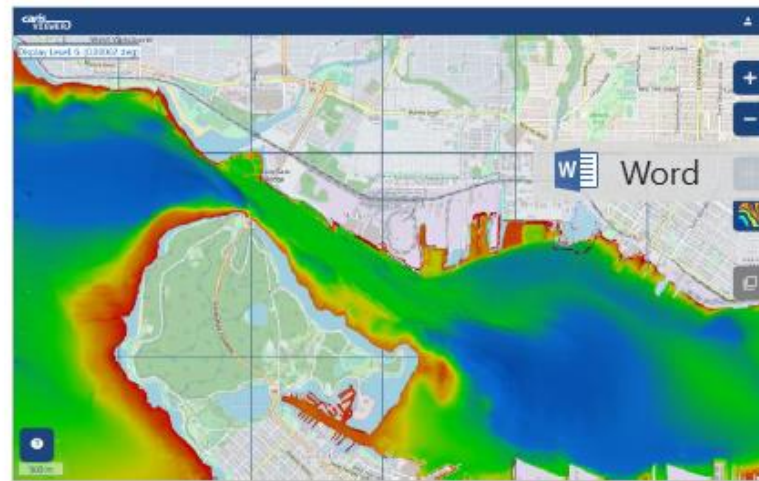
# S-102 Bathymetry Cloud Pilot Project

Canadian Hydrographic Service, Teledyne CARIS, PRIMAR, Kongsberg Digital



**CHS SURVEY BATHYMETRY IN CARIS BATHY DATABASE**

\*Could be data residing in the Kongsberg Cloud in the future for Cloud-to-Cloud data transfer from Survey to Products



**CONVERTED IN S-102 BATHYMETRY PRODUCTS IN CARIS CLOUD**

**S-102 PRODUCTS IN PRIMAR ENC VIEWER FOR DOWNLOAD**



KONGSBERG

# MUCHAS GRACIAS

Vicente Carrasco  
Jefe de Ventas – Sensor & Robotics

+1 346 312 3553



Vicente.carrasco@km.kongsberg.com

