

SIMSA HEAD QUARTER HONIARA



SOLOMON ISLANDS MARITIME SAFETY ADMINISTRATION (SIMSA)

Presentation to:
Brisbane Hydrographical conference
13-17 February 2012

SIMSA



Our presentation...

Our presentation today will focus on:

- Some background: Marine Department – a brief history
- The Hydrographical previous history Survey
- Government Priority identified location
- Activities and functions
- Goals of the Hydrographical focus
- Plans for the next 5 years
- Challenges

SIMSA



Marine Department – some history

- Marine Department has historically been both regulator and provider of services (as facilitator of shipping, operator of vessels and a training ground for the industry)
- Modern practice world-wide is to separate the regulatory aspects and ensure that the organisation responsible for issues such as safety is not trying to be both regulator and also provider of services
- MID with funding by overseas donors (ADB, EU predominantly) set out to reform the Marine Department and to form Solomon Islands Maritime Safety Administration (SIMSA)

SIMSA





Capital Territory

WATER BANK
REQUIRES UP DATE
SURVEY FOR
INTERNATIONAL VSLs

© 2012 Google
Image © 2012 GeoEye
© 2012 Europa Technologies

Google earth

agery Date: 4/27/2010 2002

9°25'47.13" S 159°57'41.24" E elev 0 ft

Eye alt 7033 ft

PREVIOUS SURVEYED SITE

LOCATION SURVEYED IN 1984

- Enogae, Lever harbour, Indespensible strait, Marau sound, luasalemba, Auki harbour, Kondovele, Lunga, Rereghana, Mbiula, Mbokona bay, Ranadi gas depot, Pulisingau port, Tombulu harbour, Florida, Noro fisheries, Ataa harbour, Ndai island and Bina harbour.

• LOCATION SURVEYED IN 1985

- Noro Interernational port, and Lambi harbour.

DOMA PROPOSED PROVINCIAL
WHARF AND GROWTH CENTRE
UNSURVEY SITE



Image © 2012 TerraMetrics
© 2012 Europa Technologies
Image © 2012 GeoEye
© 2012 Google



CHOISUEL PROVINCIAL HQ (TARO)

PROPOSED
GROWTH
FISHERIES CENTRE
REQUIRES UPDATE
SURVEY

TARO
PHQ

TARO
AIR
STRIP

Data SIO, NOAA, U.S. Navy, NGA, GEBCO
Image © 2012 TerraMetrics
Image © 2012 GeoEye
© 2012 Google

Google earth

2003

6°41'55.67" S 156°24'28.94" E elev 0 ft

Eye alt 23995 ft

MAKIRA, ULAWA PROVINCIAL HQ, (KIRAKIRA)

KIRIKIRA PROVINCIAL
HEAD QUARTER
REQUIRES UPDATE
SURVEY



Tawani

Nakumwe

Image © 2012 DigitalGlobe

© 2012 Google

Google earth

Imagery Date: 12/23/2002 2002

10°27'07.31" S 161°55'19.34" E elev 67 ft

Eye alt 8775 ft

ISABEL PROVINCE TATAMBA, PROPOSED FISHERIES CENTRE

TATAMBA FISHERIES
GROWTH CENTRE
REQUIRES UPDATE
SURVEY.

Data SIO, NOAA, U.S. Navy, NGA, GEBCO
Image © 2012 TerraMetrics
Image NASA
© 2012 Google

Google earth

2009

8°24'18.89" S 159°48'30.22" E elev 19 ft

Eye alt 28105 ft

SUAFA PROPOSED INTERNATIONAL DEVELOPMENT CENTRE

SUAFA MAJOR
GOVERNMENT
DEVELOPMENT CENTRE

SURVEY SITE REQUIRED
UPDATE SURVEY



Data SIO, NOAA, U.S. Navy, NGA, GEBCO
© 2012 Europa Technologies
Image © 2012 TerraMetrics
© 2012 Google

Google earth

8°20'25.27" S 160°40'15.92" E elev. -52 ft

Eye alt 12.72 mi

TETEPARI WESTERN TOURISM SITE



TETEPARI WESTERN
TOURISM SITE

UNSURVEY SITE

Image © 2012 DigitalGlobe
Data SIO, NOAA, U.S. Navy, NGA, GEBCO
Image © 2012 TerraMetrics
© 2012 Google

Google earth

SIHU Activities and functions

Activities and functions of SIHU are summarized as:

- **Hydrographical Unit** – ensuring compliant to IHO, SWPHC obligation and the international conventions to which the nation is party. The SIHU unit covers underwater survey, collecting update data, Chart update and publications.
- **SIHU** – provides management and logistical support to other stake holders such as ministry of mines, ministry of fisheries and the ministerial government developments focus.
- **SIHU** - provides overall direction, for incoming foreign vessel such as tourism vessel, log ship, research vessels and local ships.
- **SIHU-** provides services to private sectors such as a logging companies, Fuel depots, private passage entries.

SIMSA

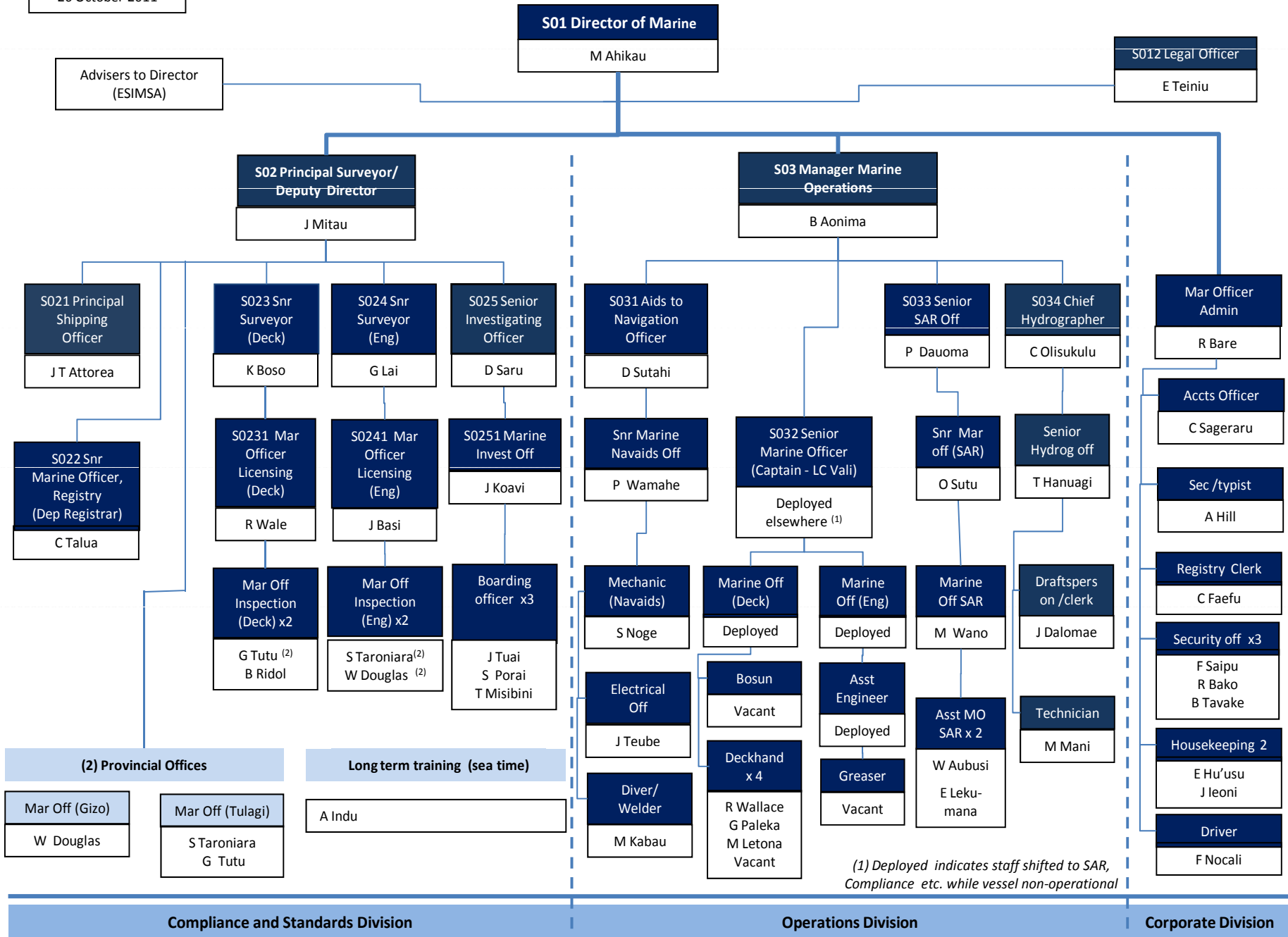


SIMSA – FOCUS PROFILE

- New positions created in the restructuring process are now being filled
- In particular, the appointment of a Legal Officer means that SIMSA will for the first time have in-house capacity to maintain the legislative framework and support enforcement of compliance.
- Compliance with safety regulation is moving forward, with more rigorous surveys, and revitalised Marine Boards of Inquiry meeting as required to investigate marine incidents. SIMSA is improving follow up to these inquiries with action against those found responsible
- Vessels are being detained on a frequent basis and less leniency is being shown to operators not complying with their safety certification
- A new approach to maintaining Nav aids will prevent the network of aids deteriorating as in the past
- SIMSA has established a hydrographic unit, (SIHU). tasked with resuming the Nation's control of navigation charts of its waters and publications.

SIMSA





(1) Deployed indicates staff shifted to SAR, Compliance etc. while vessel non-operational

VESSEL AT FUELING JETTY

THE FUELING BUNKER
REQUIRES FREQUENT
UPDATED SURVEY FOR
INTERNATIONAL VSLS



Goals (as an Hydrographical)

The Hydrographical of Solomon Islands has some limitation to its establishment with SIMSA. The establishment was started from grass where there is no proper documentation and proper record data during the transfer.

However, the SIMSA was initiative to re-establish the SIHU in order to produce new update chart and publication, which depend entirely on international assistance.

- To Continue to build SIHU in compliance and improving the unit to implement the hydrographical mandate and its requirements to met the international Hydro graphic organisations IHO obligation.
- The SIMSA has recruit four (4) officer to start up the establishment, in which two (2) officer are transferring from the Lands division and the former chief hydro graphic officer has re-appointed.

SIMSA



The future – the next 5 years

SIMSA has proved to be a substantial revenue generator and should be considered as good potential to become an 'Authority' (SOE) in due course. In this mode, it will become an effective and independent regulator, develop its own staff capability and succession, pay its own way and provide a dividend to SIG. Apart from progress towards corporatization, the main objectives over the next 5 years will be to:

- continue progress on compliance – the central task...
- develop capabilities in hydrography and in maintenance and expansion of navigation aids and
- develop more legislation as required and increase capacity to expand Solomon Islands' control and protection of its maritime sector, its travelling public and its environment. In particular –
 - Marine pollution regulation and management; small craft safety regulations ; improved port and ship security

SIMSA



Challenges

- SIMSA has no outstanding shortcomings in its present form. However, it faces on-going challenges in developing and retaining its staff, and in equipping itself appropriately for its tasks.
-
- The Marine Department suffered from inability to manage and develop its staff and structure, no succession plan and lack of physical resources given the poor cash flow generated. The result was a dysfunctional organization.
- With its solid revenue base and potential for corporatization, SIMSA now has the opportunity to address these issues, which it will best do as a corporation.
- Leadership, strong direction and close attention to staff development and succession will be critical.

SIMSA





Thank you...

SRR of Solomon Islands

