






Item 6.b - French National Report

One mission (Code de la défense, Art. R3416-3), IHO C-16

SHOM is responsible for providing the knowledge and the description of the physical marine environment, in relation to the atmosphere, the seabed, offshore and in coastal zones, to predict its evolution over time, and to make available all relevant informations

Three main operational activities, customer-driven

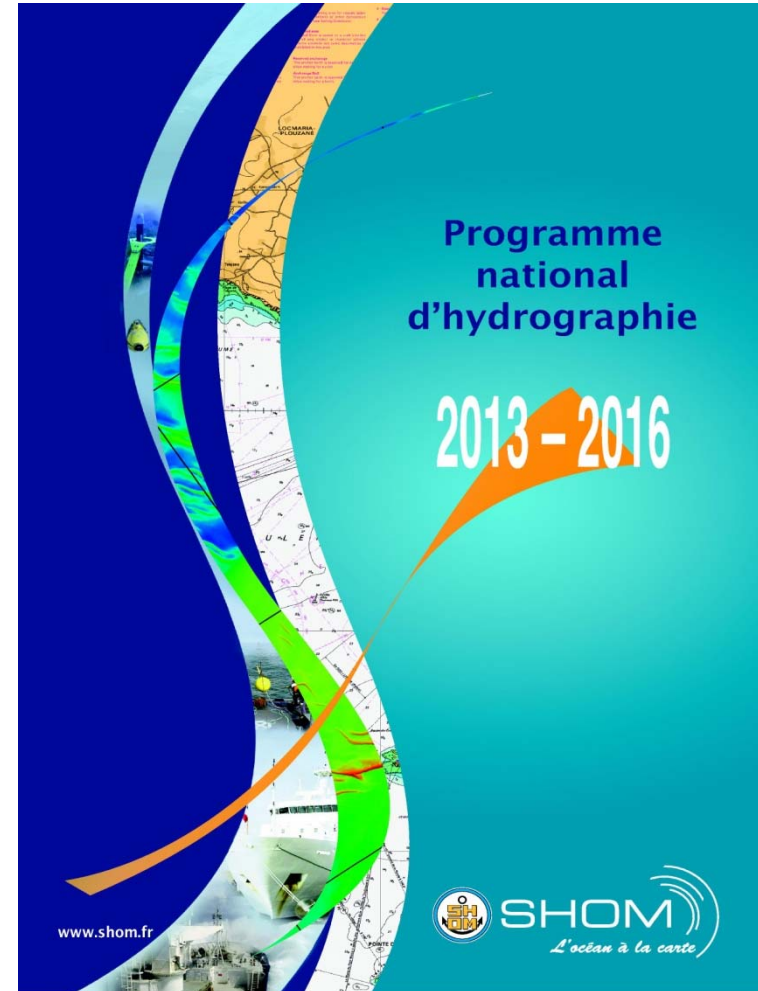
-  National hydrographic service
-  Defence support
-  Support to public maritime and coastal policies

One foundation function

-  Establishment of maritime recognized database



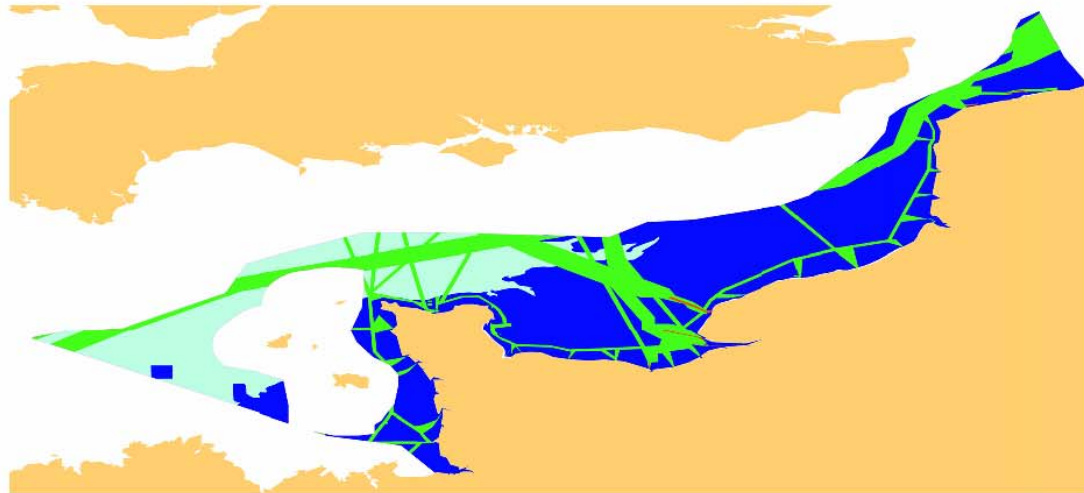
Objectives and targets 2013 - 2016



National Hydrographic Programme for La Manche (English Channel): long term objectives vs S-44 requirement

PROGRAMME NATIONAL

Connaissance cible



2013-2016

Métropole :
façade
Manche est -
mer du Nord

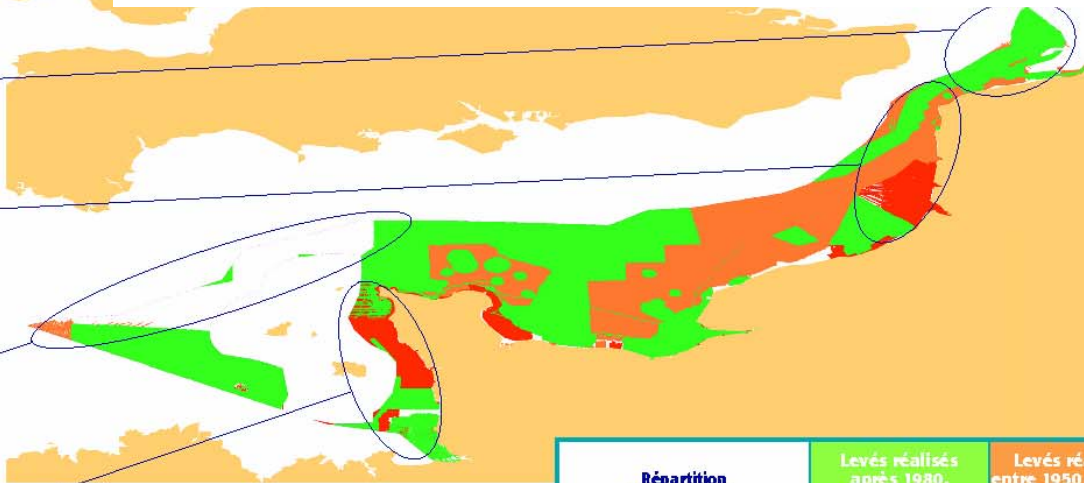
Répartition de la connaissance cible par ordre S-44 de l'OH1	Surface (km ²)	Ordre spécial	Ordre 1a	Ordre 1b	Ordre 2
ZEE	28 741	0.2 %	24.4 %	54.3 %	21.1 %
Extension juridique du plateau continental	0				

National Hydrographic Programme for La Manche (English Channel): existing knowledge and surveys plan for the period

PROGRAMME NATIONAL

2013-2016

Connaissance fin 2012
Programme de principe 2013 - 2016



Répartition de la superficie par niveau de qualité (%)	Levés réalisés après 1980. Qualité généralement conforme aux normes en vigueur.	Levés réalisés entre 1950 et 1980. Qualité pouvant nécessiter des reprises partielles (ordre 2 S-44)	Levés réalisés avant 1950. Qualité insuffisante non-conforme aux normes en vigueur.	Zone non connue
État connaissance fin 2012	53 %	27 %	8 %	12 %
État connaissance cible	100 %			
État connaissance fin 2016	61 %	25 %	4 %	10 %

Métropole :
façade
Manche est -
mer du Nord

Programme de principe
2013 - 2016

80 j

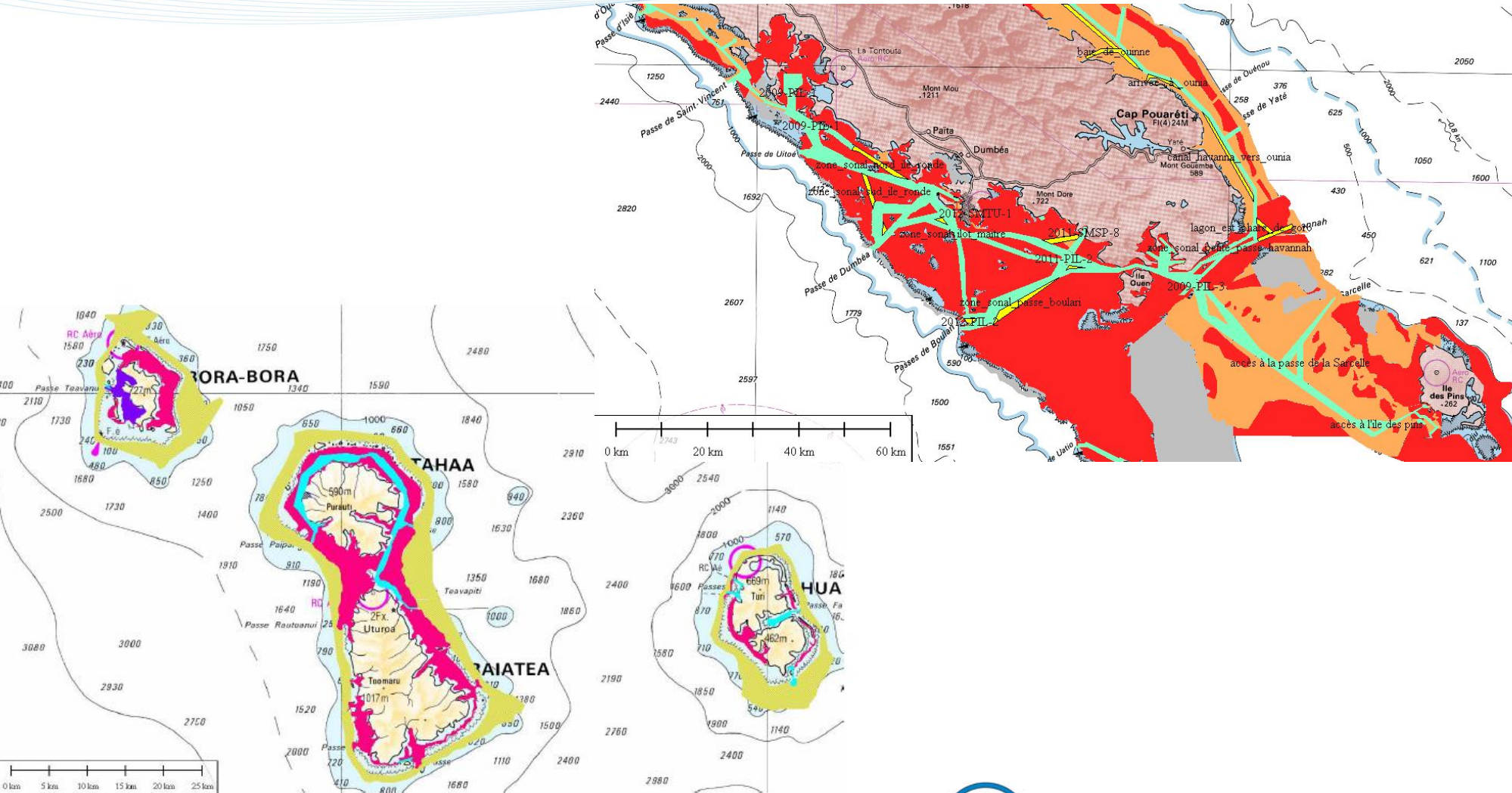
250 j

50 j

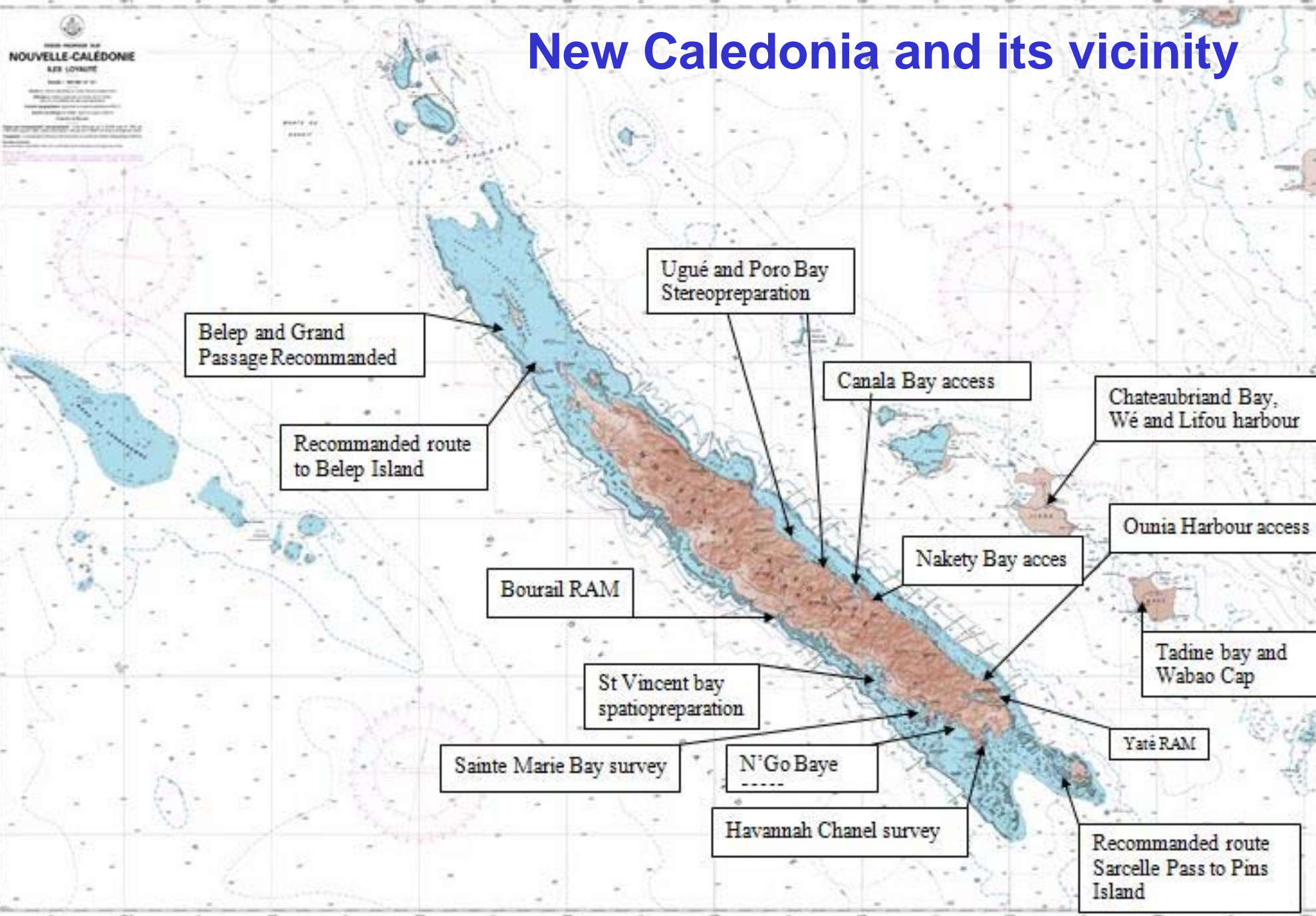
20 j/an

- levé des dispositifs d'organisation du trafic en Manche.
- poursuite du levé de Lannion au Raz Blanchard par le Passage de la Déroute ;
- levés côtiers du cap de la Hague à la limite franco-belge, notamment baie de Somme ;
- contrôles périodiques des zones évolutives dans les dispositifs d'organisation du trafic du Pas de Calais.

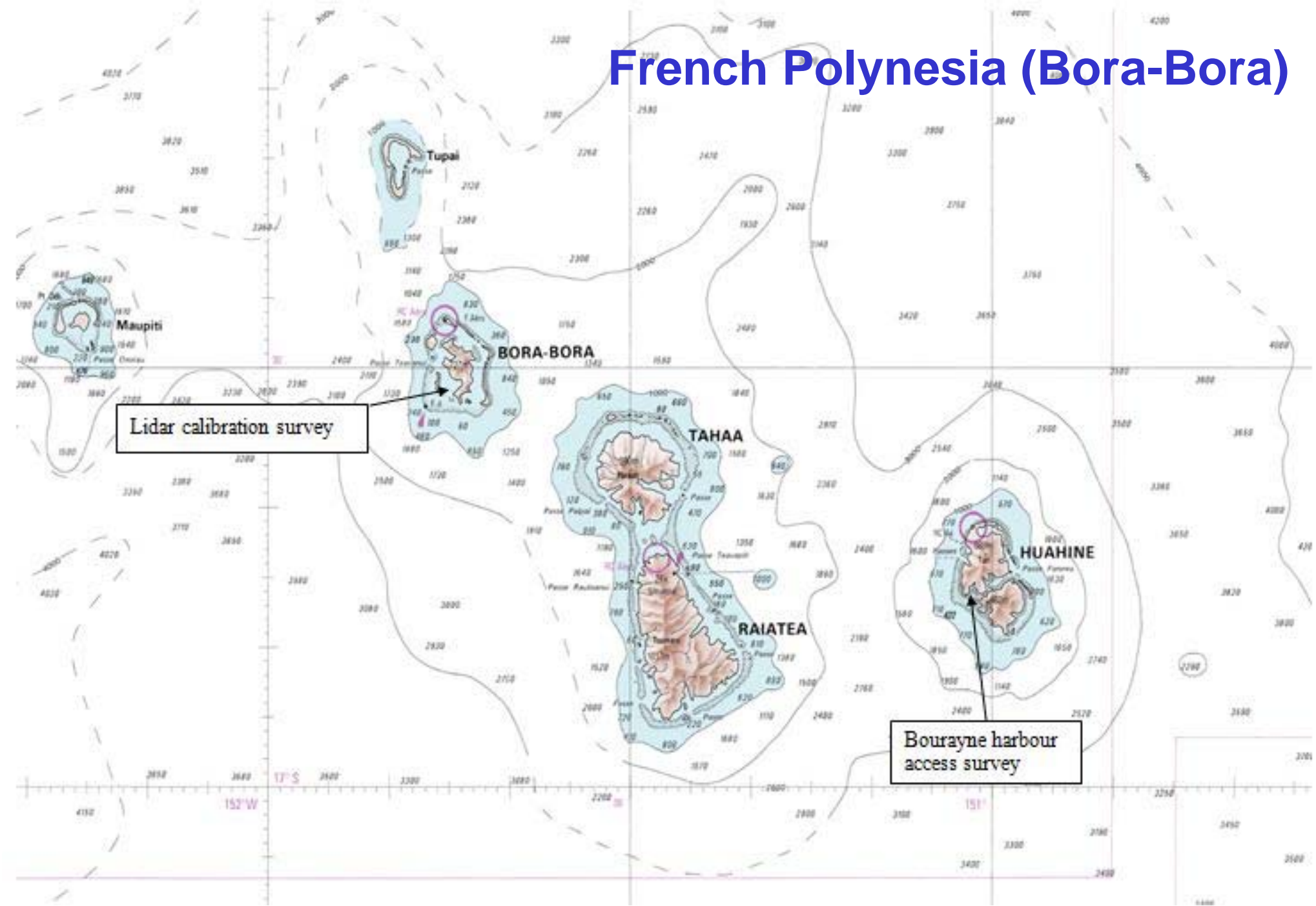
Prioritized survey plan in New Caledonia and French Polynesia



New Caledonia and its vicinity



French Polynesia (Bora-Bora)



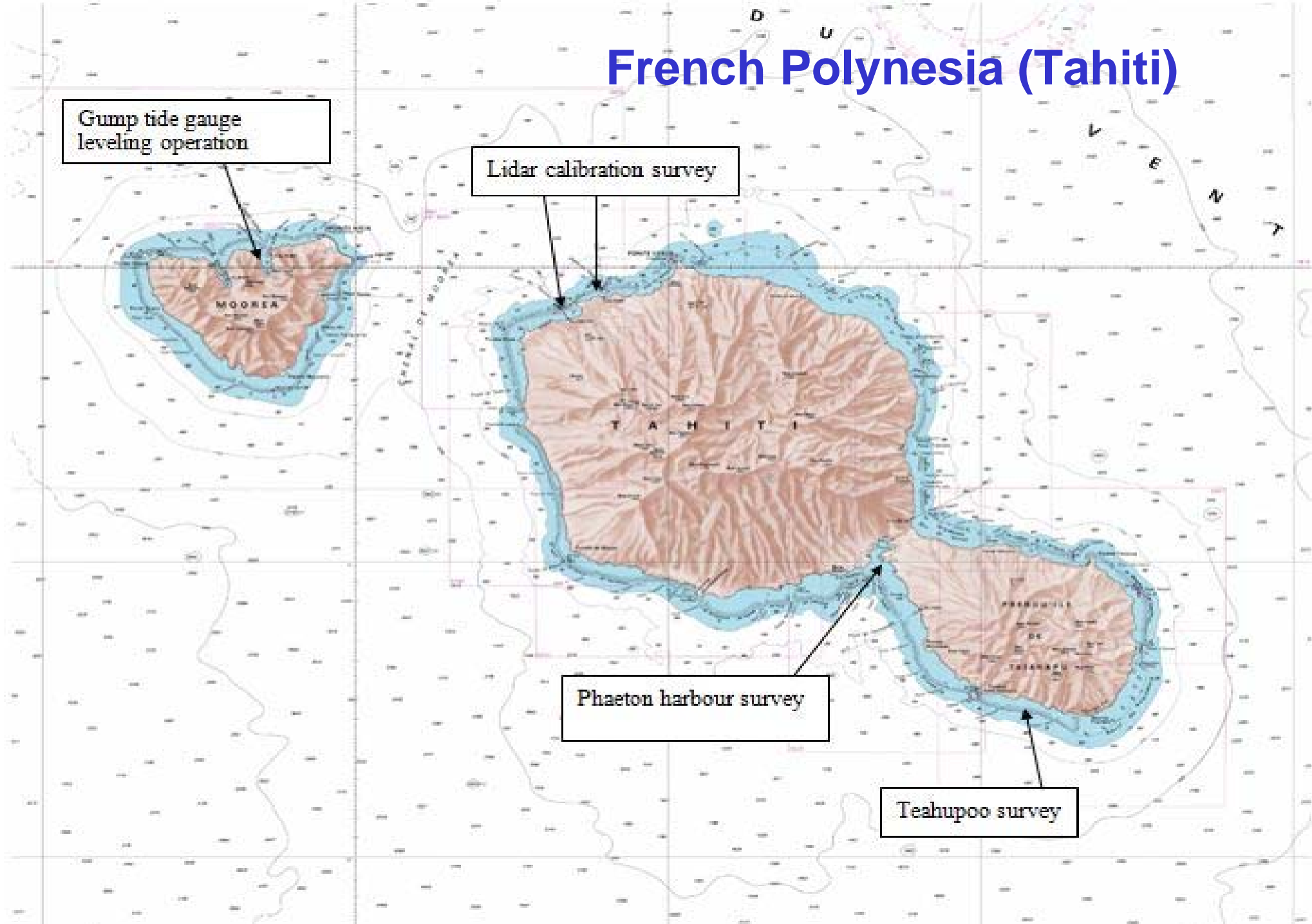
French Polynesia (Tahiti)

Gump tide gauge leveling operation

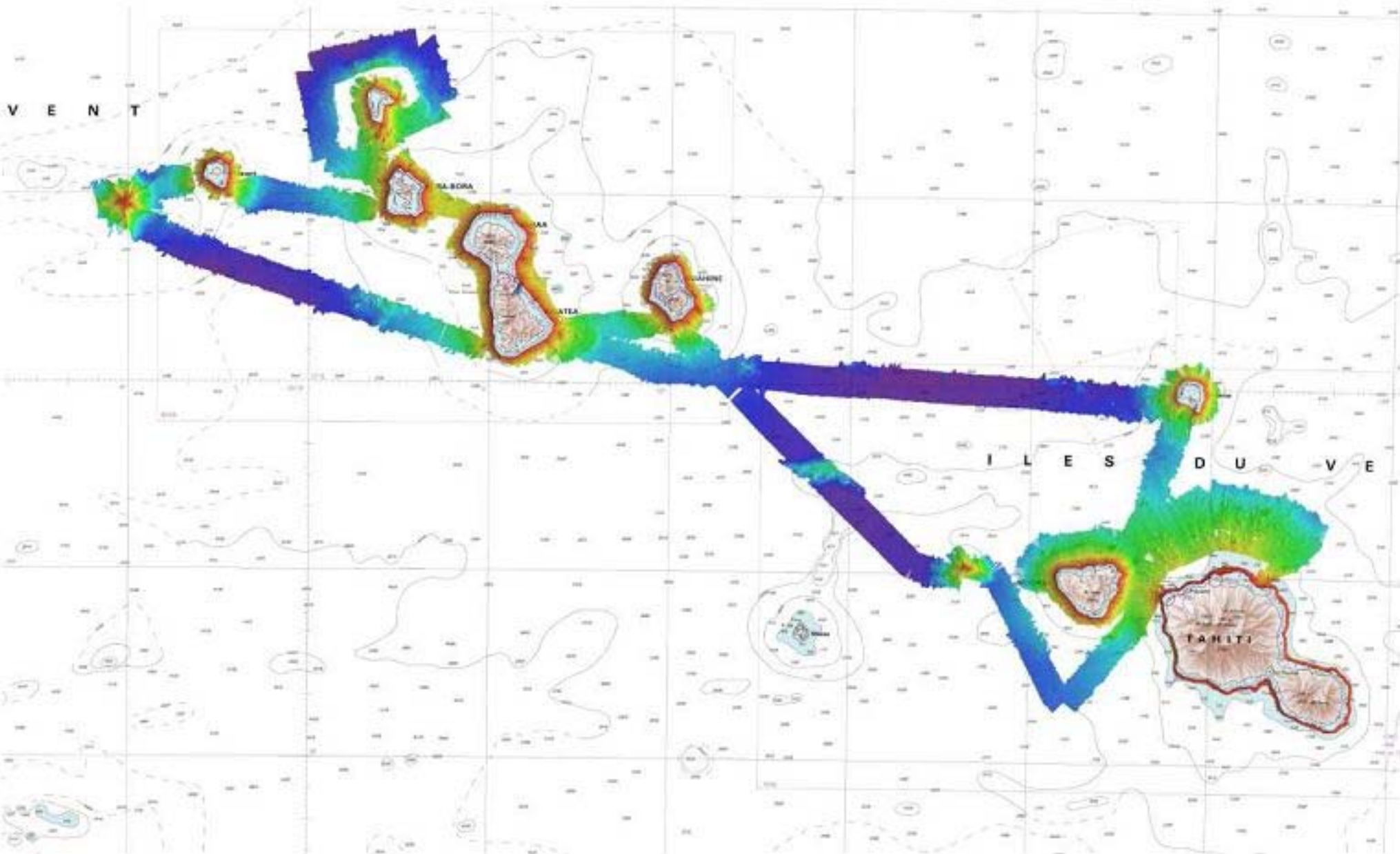
Lidar calibration survey

Phaeton harbour survey

Teahupoo survey



SHOMPOL Campaign (SHOM-Ifremer)



Competences shared with New Caledonia



➔ **New-Caledonia's Government** has now a general competence in the field of maritime safety within the **French Waters of this Territory**, including hydrographic surveys, ruled by a **Convention** signed on **March 22nd 2012**.

➔ **Another Convention**, also signed on **March 22nd 2012** between **the State**, the **Government of New-Caledonia** and **SHOM** implements this coordination in the field of hydrography, from an operational point of view.

SHOM's webportal: data.shom.fr

SHOM
L'océan à la carte

DATA.SHOM.FR
Information géographique maritime et littorale de référence

Actualités | Aide | FR |
[Remonter une information](#)

Navigation
Affichage
Données
Abonné

Catalogue

- Base de données maritimes et littorales
 - Câbles et conduites
 - Délimitations maritimes
 - Toponymie
 - Trait de côte HISTOLITT®
- Délimitations maritimes
 - 100 %
- Câbles et conduites
 - 100 %

IGN
MINISTÈRE NATIONAL DE L'ÉNERGIE, DE L'INDUSTRIE, DE L'ÉNERGÉTIQUE ET DE L'ÉCARTOILE

EUROPEAN UNION
EUROPEAN COASTAL AND MARITIME OBSERVATION PROGRAMME

Maritime & coastal geographic information portal, INSPIRE compliant.

➔ 2 additional services: infonaut.data.shom.fr, cartodyn.data.shom.fr.

➔ More information:

<http://www.shom.fr/les-services-en-ligne/portail-datashomfr/>



Crowd-sourcing experimentations

Target: Sounding acquisition during the Arctic expedition with the single beam echo sounder fitted onboard.



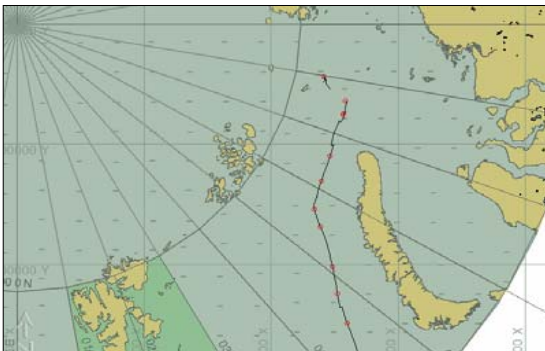
SHOM provides a Compact Turn-Key System:

- Methodology,
- Hydrographic software,
- Specific user manual,
- Rugged computer,
- Technical support.

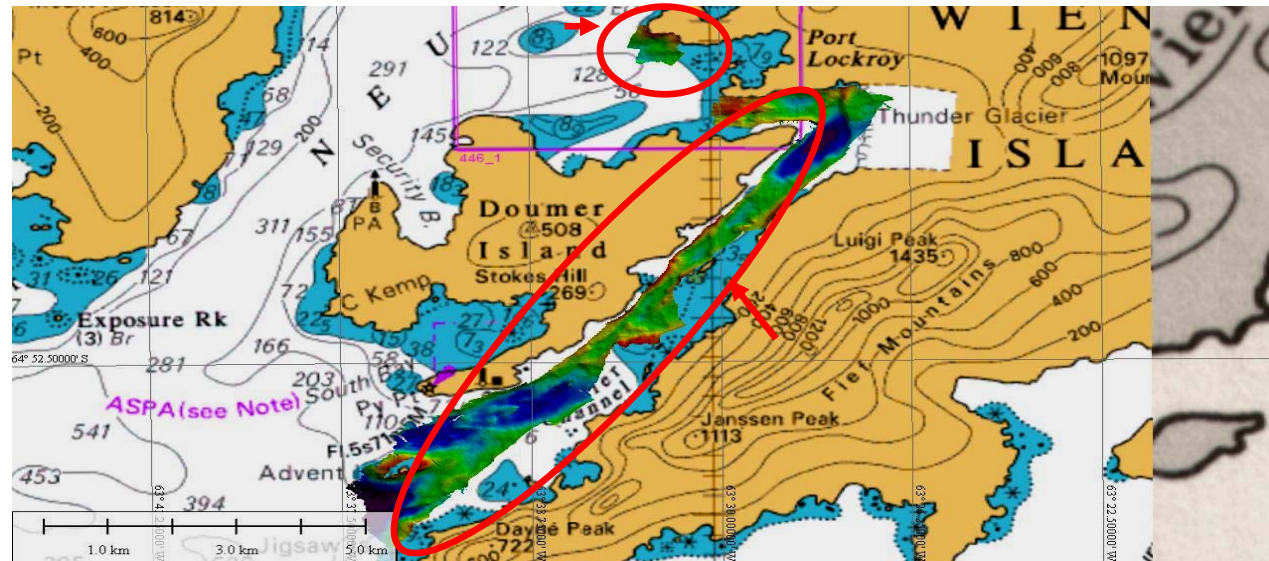


Objective:

Test trusted crowd-sourcing and the capacities of use a semi-autonomous Hydrographic system during several months, on a not well known seabed.



Crowd-sourcing experimentations





Any questions?

