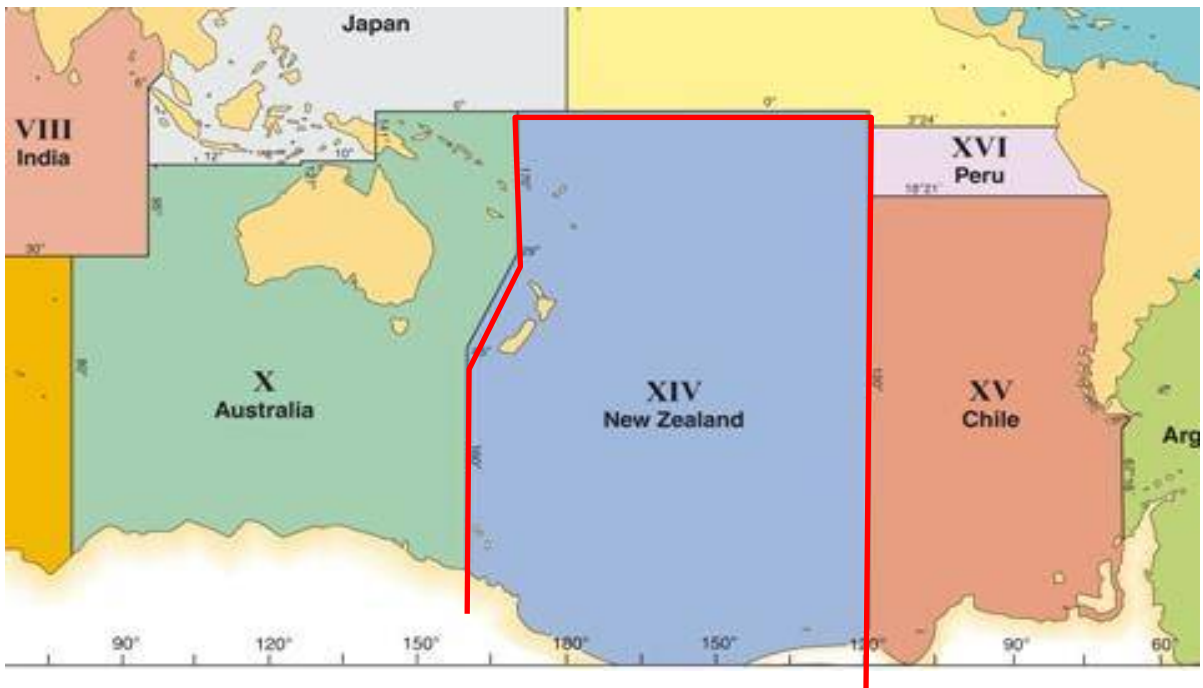


MSI in NAVAREA XIV
Submitted by New Zealand

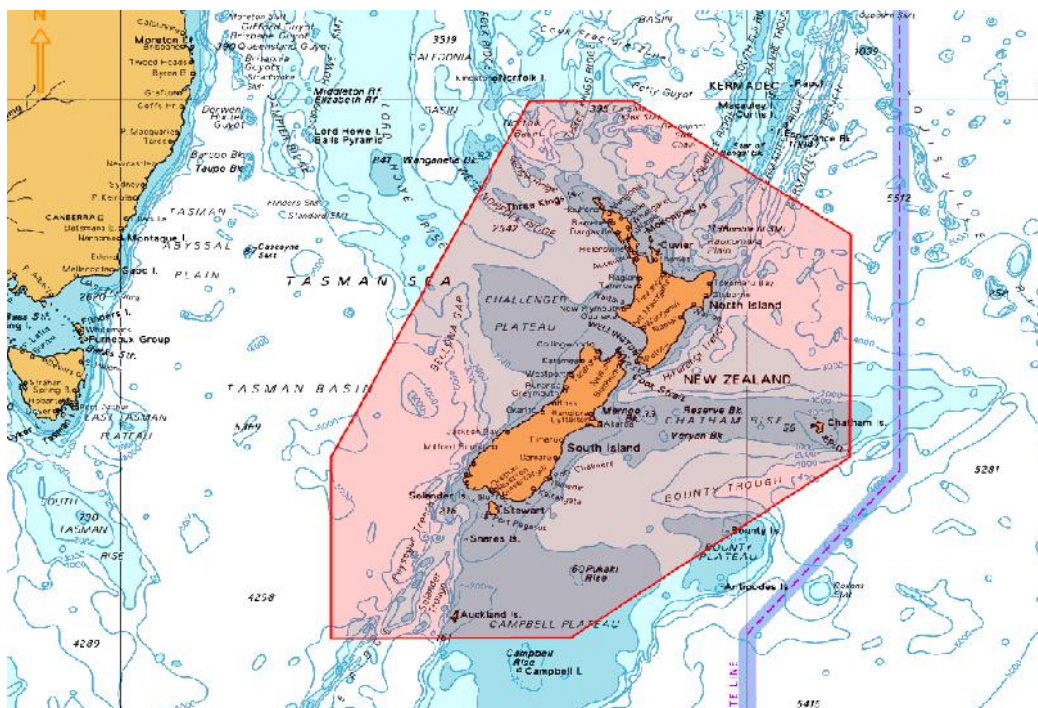
1. Background:

The limits of NAVAREA XIV are given as:

- 69° 37'S, 160° 00'E (Antarctic coast) to
- 45° 00'S, 160° 00'E to
- 29° 00'S, 170° 00'E to
- 00° 00'N, 170° 00'E to
- 00° 00'N, 120° 00'W to
- 73° 50'S, 120° 00'W (Antarctic coast)

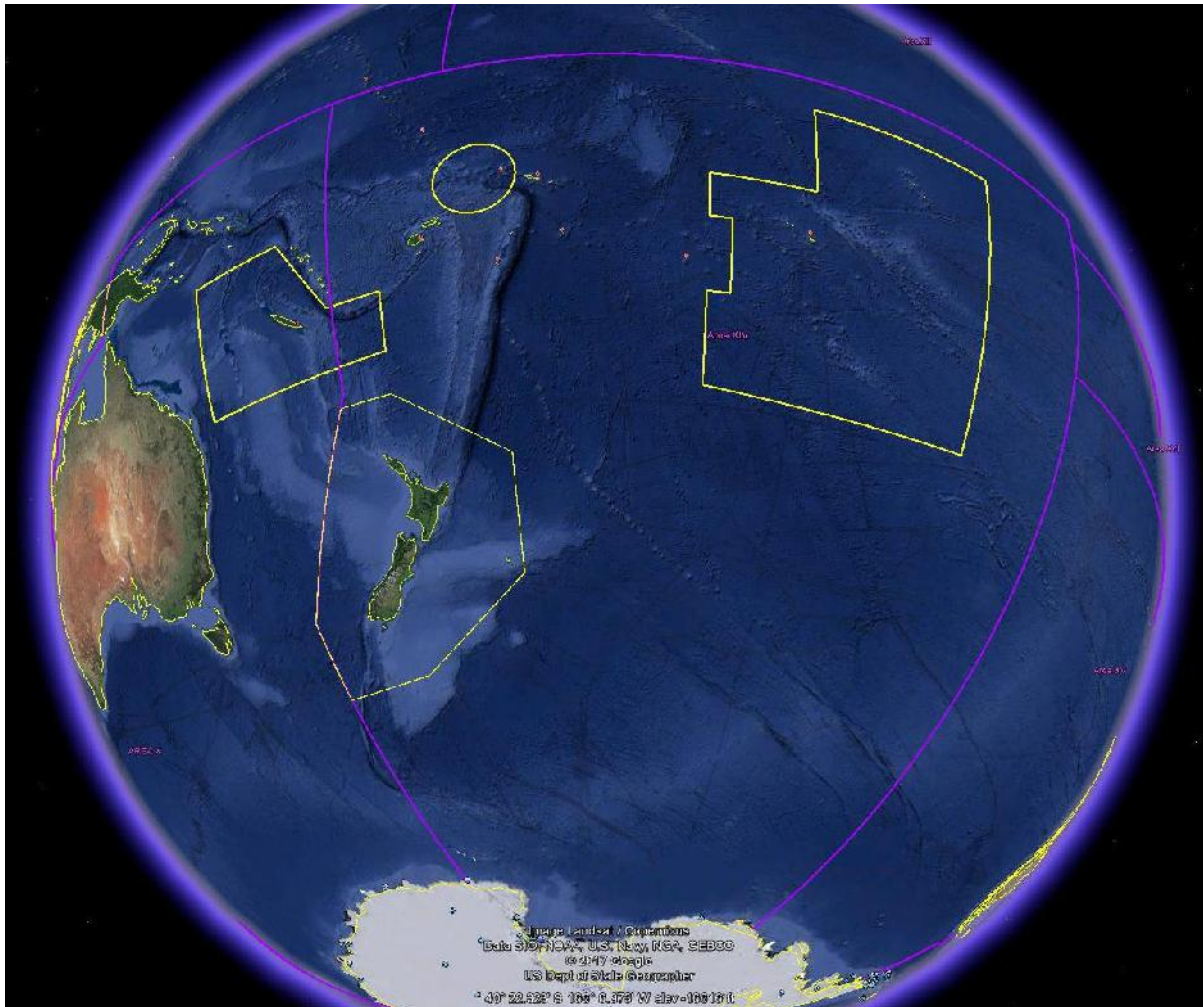


New Zealand Coastal Warning Area 'Z' is depicted below.



NAVAREA XIV Report to SWPHC 16

NAVAREA XIV with all Coastal Warning Areas depicted below.



NAVAREA XIV and New Zealand Coastal Warnings are broadcast via:

Taupo Maritime Radio ZLM (Radio Telephony) at the first scheduled time following receipt and then at the scheduled times as per ALRS Vol 3(2), 2017/2018 Edition whilst the warnings are in force or until they have been promulgated by other means; and

EGC SafetyNET II system via the Pacific Ocean Region (POR) and Atlantic Ocean Region – West (AOR-W) satellites, through the Inmarsat Maritime Safety Servers for broadcast to Inmarsat C and Mini C via the Network Control Station (NCS) and to Fleet Safety via the Broadband Global Area Network Satellite Access Station (BGAN SAS). Warnings broadcast on receipt and scheduled at 0900 and 2100 UTC.

The warnings are broadcast and monitored by Taupo Maritime Radio through a Mobile Earth Station (MES). The Australian Maritime Safety Authority (AMSA) assists New Zealand in monitoring repeat EGC transmissions via an EGC supervisory system. Transmitted NAVAREA XIV and New Zealand Coastal Navigation Warnings are emailed to Taupo Maritime Radio, where the Coastal Warnings are checked, and NAVAREA XIV warnings are forwarded to the NAVAREA XIV Coordinator.

NAVAREA XIV Report to SWPHC 16

Operational Points of Contact for National Co-ordinators within the NAVAREA

| COUNTRY | INSTITUTION | TELEPHONE | FACSIMILE | EMAIL |
|-------------------|--|----------------|----------------|--|
| Cook Islands | Ministry of Transport | +682 28810 | | saungaki.rasmussen@cookislands.gov.ck |
| French Polynesia | JRCC Tahiti | +689 541 616 | +689 404 23915 | contact@jrcc.pf |
| Fiji | Maritime Safety Authority Fiji | +679 331 5266 | +679 331 3127 | msi@msaf.com.fj |
| Kiribati | Ministry of Information, Communications, Transport & Tourism Development | +686 730 97992 | | riennang.ioane@mcttd.gov.ki |
| New Caledonia | MRCC New Caledonia | +687 292 332 | +687 292 303 | operations@mrcc.nc |
| New Zealand | RCCNZ | +64 4 577 8030 | +64 4 577 8038 | rccnz@maritimenz.govt.nz |
| Niue | Ministry of Transport | +683 6983 | | lynsey.talagi@mail.gov.nu |
| Samoa | Ministry of Works, Transport & Infrastructure | +685 21 611 | | tapaga.collins@mwti.gov.ws makerita.atonio@mwti.gov.ws |
| Tonga, Kingdom of | Ministry of Infrastructure, Marine & Ports Division | +676 22 555 | +676 42 467 | sioelif@infrastructure.gov.to |
| Tuvalu | | +688 20055 | | taasi.pittoi@gmail.com |
| Wallis & Futuna | MRCC New Caledonia | +687 292 332 | +687 292 303 | operations@mrcc.nc |

2. Comments:

The NAVAREA XIV Coordinator has initiated six monthly communications checks with the nine National Coordinators (outside of New Zealand) in an effort to improve communications and ensure contact details are correct. To date the response rate has been 100%.

NAVAREA XIV EGC Messages

| 2016 | 2017 | 2018 |
|------|------|------|
| 98 | 145 | 190 |

The increase in NAVAREA XIV Warnings is predominantly due to improved communications with Pacific Island National Coordinators through the efforts of the SWPHC Members and the IHO Capacity Building Programme (see item 6) resulting in more MSI received.

Subjects of NAVAREA XIV Warnings included casualties to AtoNs, pipe and cable laying operations, space debris, tsunami threats, dredging operations, drifting hazards, shoals located, wrecks located, drilling operations and gunnery exercises. During 2018 warnings were broadcast regarding the Inmarsat migration of GMDS Services from the I-3 to the I-4 satellite constellation.

NAVAREA XIV Report to SWPHC 16

MSI Received from Coastal States within NAVAREA XIV

| Coastal State/Country | Number of MSI messages | Topics/Subjects of messages | IHO CB Funded MSI Courses Attended |
|-----------------------|--------------------------|--|------------------------------------|
| Cook Islands | 2 | Wrecks | 2010, 2014, 2016, 2018 |
| Fiji | 64 | AtoN, Cable laying ops, Pipeline installations, Wrecks | 2010, 2014, 2016, 2018 |
| French Polynesia | 37 | Military exercises, Space debris | 2010, 2014, 2016, 2018 |
| New Caledonia | 28 | Military exercises | 2010, 2014, 2016, 2018 |
| Niue | 1* | | 2016, 2018 |
| Samoa | 1 | AtoN | 2016, 2018 |
| Tonga | 6 | AtoN, Wrecks, Shoal | 2016, 2018 |
| Tuvalu | 1 | AtoN | 2016, 2018 |
| Wallis & Futuna | Covered by New Caledonia | | Covered by New Caledonia |
| Kiribati | 3 | AtoN | 2016, 2018 |

* MSI message received but no warning required

3. National reports

Templates sent to 10 National Coordinators in Navarea XIV. Nine completed reports received and appended to this report.

4. NAVTEX Coverage:

N/A

5. Operational Issues:

NAVAREA XIV

The Inmarsat I3-I4 migration, specifically the westerly repositioning of the POR and AOR-W satellites challenged New Zealand's ability to monitor NAVAREA and METAREA XIV EGC broadcasts. Without any landmass in the area of NAVAREA/METAREA XIV under the new AOR-W footprint, an EGC receiver could not be physically located to monitor AOR-W EGC reception. NAVAREA XIV has initiated the following model, with the support of the WWNWS Chair, to monitor MSI broadcasts:

Following every MSI broadcast

- All broadcast transmissions are monitored via the SafetyNET II interface, which provides system confirmation of message status and text display of the message sent. Monitoring of broadcast reception via the POR satellite continues via the existing INM-C EGC receiver.

Once Daily

- A ship in the eastern part of NAVAREA XIV, under the AOR-W footprint is identified via Satellite AIS (S-AIS) and requested to confirm message reception.

National Coordinators

As per National Coordinator reports.

NAVAREA XIV Report to SWPHC 16

6. Capacity Building:

LINZ and the Ministry of Foreign Affairs & Trade (NZ Aid programme) are working together on the Pacific Regional Navigation Initiative (PRNI) to improve maritime safety throughout the region. Initially a 5 year programme, in January 2018 it was extended by 2 years to 2021. LINZ has a focus on the Cook Islands, Niue, Samoa, Tokelau and Tonga. This project includes; hydrography risk assessments for Niue, Samoa and Tokelau (completed); capacity building to assist PICs reach Phase 1 of the IHO Capacity Building Strategy, in particular, the establishment of a National MSI Coordinator position; and hydrographic surveys in Cook Islands, Niue, Samoa and Tonga to improve chart adequacy and accuracy.

Through the South West Pacific Hydrographic Commission (SWPHC) Capacity Building Programme, a MSI training course was held in Wellington, New Zealand between 6th and 9th August 2018. Participants from 14 Pacific Island Countries (PIC) attended – Cook Islands, Fiji, French Polynesia, Kiribati, New Caledonia, Marshal Islands, Niue, Papua New Guinea, Samoa, Solomon Islands, Tokelau, Tonga, Tuvalu and Vanuatu. The training was led by the NAVAREA XIV Coordinator, with support from LINZ as the SWPHC CB Coordinator, and with instructional assistance from NAVAREA X.

New Zealand has received requests for travel to individual countries to deliver MSI training, in addition to facilitating regional MSI courses. As all National Coordinators are invited to and have participated in the regional courses, New Zealand believes the biennial SWPHC Regional MSI Courses provide the most effective and efficient method for delivering MSI training to all SWPHC National Coordinators. If additional, abbreviated MSI workshops can be accommodated within existing assistance programmes, the NAVAREA XIV Coordinator will endeavour to facilitate these during SAR training visits, however National Coordinators should understand that the travel and logistics to conduct individual training in addition to scheduled courses would place significant pressure on already committed resources.

National Coordinators are aware that guidance and support is not limited to the formal training courses; the NAVAREA XIV Coordinator is available 24/7 to assist.

The IHO is actively encouraging Regional Hydrographic Commissions to identify National MSI Coordinators who can be appointed as additional MSI trainers. It is envisaged that MSI trainers would become part of the delivery team. This initiative is an action identified at IHO's Inter-Regional Coordination Committee at IRCC9 (Actions 2, 3, 4 & 5) and Capacity Building Sub-Committee at CBSC15 (action 15), June 2017. In May 2018, the SWPHC Chair invited Maritime Safety Authority of Fiji (MSAF), as National MSI Coordinator, to become part of the delivery team. MSAF supports this initiative and Mr Sunil Kumar was part of the team delivering the MSI training in August 2018.

In conjunction with the Maritime New Zealand (MNZ) and Ministry of Foreign Affairs and Trade (MFAT) the Rescue Coordination Centre New Zealand (RCCNZ) continues to deliver Search and Rescue and Maritime Safety and Prevention Training across the Pacific through the Pacific Maritime Safety Programme (PMSP). During 2018, RCCNZ has delivered training and coordinated on water SAR exercises in Tonga, Kiribati, Samoa and Tuvalu, with further training scheduled for 2019. The training being delivered by New Zealand is part of a larger Pacific Community (SPC) capacity building program with a long term view to improve SAR governance, SAR coordination and SAR Response proficiency in the region.

7. Other Activities:

New Zealand is actively involved with a number of IMO and IHO Sub-Committees and Working Groups; and capacity building in the SWP region through the Regional Hydrographic Commission and the NZ Aid Programme, PRNI

8. NAVAREA Website:

NAVAREA XIV warnings in force: www.maritimenz.govt.nz/navarea
The website is updated daily during normal office working hours.
The date and time of the last update is displayed on the web site.

NAVAREA XIV Report to SWPHC 16

9. NAVAREA Contact Information:

NAVAREA XIV Coordinator
Maritime New Zealand
RCCNZ
41 Percy Cameron Street, Avalon Studios Level 1
PO Box 30050
LOWER HUTT 5040
New Zealand
Tel: +64 4 577 8030 (24 hours)
FAX: +64 4 577 8038 (24 hours)
E-mail rccnz@maritimenz.govt.nz (24 hours)
Website: <http://www.maritimenz.govt.nz/navarea>

10. Actions requested:

The New Zealand representative to SWPHC to note the information provided.

11. Synopsis:

This report highlights the MSI activities for the year 2018. New Zealand is actively involved with a number of IMO and IHO Sub-Committees and Working Groups; and capacity building in the SWP region for MSI, charting and hydrography through the Regional Hydrographic Commission and the NZ Aid Programme, PRNI, and maritime safety and SAR through the Pacific Community (SPC) and PMSP. The NAVAREA XIV Coordinator is regularly engaging with the National Coordinators in NAVAREA XIV in an effort to improve communications and ensure contact details are correct.

National Reports to Regional Hydrographic Commissions

Regional Hydrographic Commissions (RHCs) are intended to provide, under the auspices of the International Hydrographic Organization regional, coordination with regard to nautical information, hydrographic surveys, production of nautical charts and documents, training, technical cooperation and hydrographic capacity building projects.

The RHCs are required to report to the International Hydrographic Conference on activities, hydrographic capacity and requirements within their region. They are also required to submit an annual report to the International Hydrographic Bureau indicating progress made against the key targets in the IHO Work Programme. To assist in the RHC gathering information on the activities within their area of responsibility a number of reports are required from National Organizations.

Details of these reporting requirements are available in IHO Resolution 2/1997 as amended which is available from the IHO Website;

http://iho.int/iho_pubs/misc/M3-E-JAN13.pdf

Part of the reporting requirements relate to Maritime Safety Information services. This document is provided to assist National Coordinators in capturing the required information and is based on the current approved World Wide Navigational Warning Service Template.

On completion of the form National Coordinators are requested to pass the information to the relevant NAVAREA Coordinator for their Region.

Associated NAVAREA Coordinator

(Details should be completed by NAVAREA Coordinator prior to distributing form)

| | |
|--------------------------|--|
| NAVAREA Region | XIV |
| Primary Point of Contact | Dave Wilson and Conrad Reynecke |
| Organization | Rescue Coordination Centre New Zealand |
| Email Address | rccnz@maritimenz.govt.nz |
| Telephone No. | +64 4 5778030 |
| Facsimile No. | +64 4 5778038 |
| Postal Address | Rescue Coordination Centre New Zealand 41 Percy Cameron Street, Avalon Studios Level 1 PO Box 30050, Lower Hutt 5040 Wellington New Zealand |

[Guidance on what information to be included can be obtained by hovering the mouse over the relevant fields in the form. If additional guidance or assistance in completing the form is required then the National Coordinator should contact the relevant NAVAREA Coordinator.]

**National Maritime Safety Information
(MSI) Self Assessment**

New Zealand

RCCNZ

1. Maritime Area

New Zealand Coastal Warning Area Z is a defined polygon for the purpose of broadcasting NZ Coastal Navigation Warnings via Inmarsat SafetyNET.

The limits of the area are: 30-00S 169-30E to 30-00S 174-30E to 36-00S 175-00W to 45-00S 175-00W to 51-30S 171-30E to 51-30S 160-00E to 45-00S 160-00E

2. Operational Points of Contact for the National Coordinator

| Institution/Organization | Telephone | Facsimile | Email |
|--------------------------|---------------|---------------|--------------------------|
| RCCNZ | +64 4 5778030 | +64 4 5778038 | rccnz@maritimenz.govt.nz |
| | | | |

3. GMDSS Master Plan

Is plan up to date? Yes

Date of last update: Jul 2018

MSI - National Coordinator Procedures

Do you have access to IMO/IHO/WMO Joint Manual on MSI? Yes

Do you follow the suggested warning format in Joint Manual? Yes

Have you or your staff received MSI Training? Yes

Are you aware of your NAVAREA Coordinator? Yes

Do you pass MSI to NAVAREA Coordinator? Yes

Do you request NAVAREA Coordinator broadcast MSI? Yes

[Remarks about MSI - National Coordinator Procedures]

| MSI Broadcast Service | | | | |
|--------------------------|-------------------------------------|--------------------------|-------------------------------------|--------------------------|
| NAVTEX | SafetyNET | | | HF NBDP |
| | NAV | MET | SAR | |
| <input type="checkbox"/> | <input checked="" type="checkbox"/> | <input type="checkbox"/> | <input checked="" type="checkbox"/> | <input type="checkbox"/> |

Complete Section 4

Specifics of equipment used and software version with date updated

| Equipment Type for Ports and Local Area | Software Version | Date of Latest Update |
|---|------------------|-----------------------|
| Thrane & Thrane easyMail | V2.00 | Build 025 |
| | | |
| | | |

Summary of National Maritime Safety Information Issued

| 2016 | | 2017 | | 2018 | |
|-------|----------------------|-------|----------------------|-------|----------------------|
| Total | Average Elapsed Time | Total | Average Elapsed Time | Total | Average Elapsed Time |
| 298 | 33 Mins | 267 | 16 Mins | 253 | 18 Mins |

4. International SafetyNET Service

Does your Administration broadcast MSI through the International SafetyNET Service? Yes

Is it Operational now? Yes If not indicate the expected date of operation

| NAV/MET Area | Type of Information | Country | LES/LESO | Ocean Region/LES ID | MSI Coastal Warning Area (if applicable) | Broadcast Schedule (UTC) | Status of Implementation |
|--------------|---------------------|---------|----------|---------------------|--|--------------------------|--------------------------|
| | NAV ⁽²⁾ | * NZ | Burum | POR/AOR-W | Z | 0900 & 2100 | Operational |
| | MET ⁽³⁾ | ** | | | | | |
| | SAR ⁽⁴⁾ | NZ | Burum | POR/AOR-W | | | Operational |

(1) Provide a diagram showing limits of Coastal Warning Areas, including B1 Codes
 (2) NAV = Navigational Warnings
 (3) MET = Meteorological Warnings
 (4) SAR = Search and Rescue Alerts
 * - NAVAREA Coordinator responsible for the Area ** - The issuing service nominated by WMO for METAREA services, responsible for the area

5. NAVTEX Coverage

New Zealand does not broadcast coastal warnings via NAVTEX.

| NAVTEX Coast Station | Frequency | Position of Antenna | Range (NM) | B1 Character | Transmission Times | Language |
|----------------------|-----------|---------------------|------------|--------------|--------------------|----------|
| | | | | | | |
| | | | | | | |
| | | | | | | |
| | | | | | | |

6. HF Narrow Band Direct Printing (NBDP) MSI Broadcast Service

Does your Administration broadcast MSI through HF NBDP? No

Is it Operational now? If not indicate the expected date of operation

| Country | NBDP Coast Station | Position | Frequency Band | Schedule (UTC) | Status |
|---------|--------------------|----------|---------------------|----------------|--------|
| | | | 4MHz (4210KHz) | | |
| | | | 6MHz (6425KHz) | | |
| | | | 8MHz (8416.5KHz) | | |
| | | | 12MHz (12579KHz) | | |
| | | | 16MHz (16806.5KHz) | | |
| | | | 19MHz (19680.5KHz) | | |
| | | | 22MHz (22376 KHz) | | |
| | | | 26MHz (26100.5 KHz) | | |

7. Does your Administration broadcast MSI through other means?

In addition to EGC broadcasts; NZ also broadcast navigation warnings on VHF, MF and HF.

8. Operational Issues

None.

9. Contingency Planning

Maritime New Zealand (Kordia/Taupo Maritime Radio) uses the Inmarsat SafetyNET II system to broadcast Navigational Warnings and RescueNET to broadcast SAR Information. The versatility of using web portals, in addition to Kordia having back-up servers, reduces the risk of a New Zealand-based single point of failure. In the event of a total system failure at Kordia, web access is available via RCC New Zealand which also has back-up servers and multiple redundant systems in place

10. Capacity Building

NZ National Coordinator provides instructors to every MSI Capacity Building Course in the SWP region. Training for NZ National Coordinator staff is conducted in-house and no assistance is required through the Capacity Building Fund.

11. Other Activities

RCCNZ attended WWNWS 10 in Monaco, August 2018.
Maritime New Zealand will attend NCSR 6 January 2019 and the DRWG 17 following this.

12. National Maritime Website

www.maritimenz.govt.nz/navarea

13. Recommendations

None

14. Summary

This self-assessment report highlights the MSI activities for the year 2018. NZ is actively involved with a number of IMO and IHO Sub-Committees and Working Groups; and capacity building in the South West Pacific region.

15. Remarks/Additional Information

None

16. Attachments

| |
|--|
| |
|--|

National Maritime Safety Information
(MSI) Self Assessment

SAMOA

Ministry of Works, Transport & Infrastructure (

1. Maritime Area

Samoa Coastal Navigational Warning area covers Samoa waters including 200 nautical miles exclusive economic zone (EEZ) of Samoa.

2. Operational Points of Contact for the National Coordinator

| Institution/Organization | Telephone | Facsimile | Email |
|--------------------------|------------|------------|----------------------------|
| MWTI | +685 21611 | +685 28688 | tapaga.collins@mwti.gov.ws |
| | | | makerita.atoio@mwti.gov.ws |

3. GMDSS Master Plan

Is plan up to date? No

Date of last update: Nil

MSI - National Coordinator Procedures

Do you have access to IMO/IHO/WMO Joint Manual on MSI? Yes

Do you follow the suggested warning format in Joint Manual? Yes

Have you or your staff received MSI Training? Yes

Are you aware of your NAVAREA Coordinator? Yes

Do you pass MSI to NAVAREA Coordinator? Yes

Do you request NAVAREA Coordinator broadcast MSI? Yes

[Remarks about MSI - National Coordinator Procedures]

| MSI Broadcast Service | | | | | | |
|--------------------------|-------------------------------------|--------------------------|--------------------------|--------------------------|--|--|
| NAVTEX | SafetyNET | | | HF NBDP | | |
| | NAV | MET | SAR | | | |
| <input type="checkbox"/> | <input checked="" type="checkbox"/> | <input type="checkbox"/> | <input type="checkbox"/> | <input type="checkbox"/> | | |

Complete Section 4

Specifics of equipment used and software version with date updated

| Equipment Type for Ports and Local Area | Software Version | Date of Latest Update |
|---|------------------|-----------------------|
| Maritime VHF & HF Radio | | |
| | | |
| | | |

Summary of National Maritime Safety Information Issued

| 2016 | | 2017 | | 2018 | |
|-------|---------------------------|-------|---------------------------|-------|---------------------------|
| Total | Average Elapsed Time | Total | Average Elapsed Time | Total | Average Elapsed Time |
| 0 | <input type="text"/> Mins | 0 | <input type="text"/> Mins | 1 | <input type="text"/> Mins |

4. International SafetyNET Service

Does your Administration broadcast MSI through the International SafetyNET Service? No

Is it Operational now? No If not indicate the expected date of operation

| NAV/MET Area | Type of Information | Country | LES/LESO | Ocean Region/LFS ID | MSI Coastal Warning Area ⁽¹⁾ (if applicable) | Broadcast Schedule (UTC) | Status of Implementation |
|--------------|---------------------|---------|----------|---------------------|---|--------------------------|--------------------------|
| | NAV ⁽²⁾ | ** | | | | | |
| | MET ⁽³⁾ | ** | | | | | |
| | SAR ⁽⁴⁾ | | | | | | |

(1) Provide a diagram showing limits of Coastal Warning Areas, including B1 Codes

(2) NAV = Navigational Warnings

(3) MET = Meteorological Warnings

(4) SAR = Search and Rescue Alerts

* - NAVAREA Coordinator responsible for the Area ** - The issuing service nominated by WMO for METAREA services, responsible for the area

5. NAVTEX Coverage

Samoa does not broadcast MSI via NAVTEX as this is not practiced in the SWP region.

| NAVTEX Coast Station | Frequency | Position of Antenna | Range (NM) | B1 Character | Transmission Times | Language |
|----------------------|-----------|---------------------|------------|--------------|--------------------|----------|
| | | | | | | |
| | | | | | | |
| | | | | | | |
| | | | | | | |

6. HF Narrow Band Direct Printing (NBDP) MSI Broadcast Service

Does your Administration broadcast MSI through HF NBDP? No

Is it Operational now? No If not indicate the expected date of operation

| Country | NBDP Coast Station | Position | Frequency Band | Schedule (UTC) | Status |
|---------|--------------------|----------|---------------------|----------------|--------|
| | | | 4MHz (4210KHz) | | |
| | | | 6MHz (6425KHz) | | |
| | | | 8MHz (8416.5KHz) | | |
| | | | 12MHz (12579KHz) | | |
| | | | 16MHz (16806.5KHz) | | |
| | | | 19MHz (19680.5KHz) | | |
| | | | 22MHz (22376 KHz) | | |
| | | | 26MHz (26100.5 KHz) | | |

7. Does your Administration broadcast MSI through other means?

MWTI as the competent authority disseminates MSI by e-mail and text messages. Awareness and retrieving relevant information from affected parties such as Ministry of Agriculture and Fisheries and other Maritime Stakeholders are done through circular letters issued

8. Operational Issues

MWTI is currently working on establishing MSI Coordinator position through Cabinet submission for approval to do so.

9. Contingency Planning

MSI messages sent to the NAVAREA XIV Coordinator, RCCNZ by email are promulgated.

10. Capacity Building

MWTI representatives have participated in the past MSI training courses conducted during SWPHC meetings as well as some trainings offered by LINZ. However there is still a need for the continuation of this training in the future.

11. Other Activities

LINZ confirmed that hydrographic survey for all areas identified during the risk assessment in 2017 will be conducted in 2020.

12. National Maritime Website

www.mwti.gov.ws

13. Recommendations

It is strongly recommended that LINZ continues to assist Samoa through provision of relevant trainings and upgraded navigational charts.

14. Summary

This self-assessment report highlights the MSI activities for the year 2018. MWTI continues to work with relevant parties to obtain relevant information and communicated via H.Notes to LINZ and RCCNZ for promulgation in Notice to Mariners.

15. Remarks/Additional Information

Nil

16. Attachments

National Reports to Regional Hydrographic Commissions

Regional Hydrographic Commissions (RHCs) are intended to provide, under the auspices of the International Hydrographic Organization regional, coordination with regard to nautical information, hydrographic surveys, production of nautical charts and documents, training, technical cooperation and hydrographic capacity building projects.

The RHCs are required to report to the International Hydrographic Conference on activities, hydrographic capacity and requirements within their region. They are also required to submit an annual report to the International Hydrographic Bureau indicating progress made against the key targets in the IHO Work Programme. To assist in the RHC gathering information on the activities within their area of responsibility a number of reports are required from National Organizations.

Details of these reporting requirements are available in IHO Resolution 2/1997 as amended which is available from the IHO Website;

http://iho.int/iho_pubs/misc/M3-E-JAN13.pdf

Part of the reporting requirements relate to Maritime Safety Information services. This document is provided to assist National Coordinators in capturing the required information and is based on the current approved World Wide Navigational Warning Service Template.

On completion of the form National Coordinators are requested to pass the information to the relevant NAVAREA Coordinator for their Region.

Associated NAVAREA Coordinator

(Details should be completed by NAVAREA Coordinator prior to distributing form)

| | |
|--------------------------|---|
| NAVAREA Region | XI |
| Primary Point of Contact | Notices to Mariners Office |
| Organization | Hydrographic and Oceanographic Departme |
| Email Address | tuho@jodc.go.jp jcg-tuho@navarea11.go.jp |
| Telephone No. | +81-3-3595 3571 |
| Facsimile No. | +81-3-3595 3647 |
| Postal Address | Japan Coast Guard 3-1-1, Kasumigascki, Chiyoda-ku, Tokyo 135-8932 |

[Guidance on what information to be included can be obtained by hovering the mouse over the relevant fields in the form. If additional guidance or assistance in completing the form is required then the National Coordinator should contact the relevant NAVAREA Coordinator.]

**National Maritime Safety Information
(MSI) Self Assessment**

Kiribati

Ministry of Information, Communications, Trai

1. Maritime Area

Kiribati Coastal Navigational Warning area covers Kiribati waters including 200 nautical miles exclusive economic zone (EEZ) of Kiribati for broadcasting of navigational warnings via Coast Radio Station (CRS) on VHF/HF.

2. Operational Points of Contact for the National Coordinator

| Institution/Organization | Telephone | Facsimile | Email |
|--------------------------|--------------|-----------|-----------------------------|
| MICTTD, Marine Division | 686-74026003 | | riennang.ioane@mcttd.gov.ki |
| | 686-73097992 | | |

3. GMDSS Master Plan

Is plan up to date? No Date of last update:

MSI - National Coordinator Procedures

Do you have access to IMO/IHO/WMO Joint Manual on MSI? Yes

Do you follow the suggested warning format in Joint Manual? Yes

Have you or your staff received MSI Training? Yes

Are you aware of your NAVAREA Coordinator? Yes

Do you pass MSI to NAVAREA Coordinator? Yes

Do you request NAVAREA Coordinator broadcast MSI? Yes

For Kiribati MSI broadcast service, Navigational warning / safety, Met information and SAR information through radio communication VHF channel 16 to international and domestic vessels.

| MSI Broadcast Service | | | | |
|--------------------------|--------------------------|--------------------------|--------------------------|--------------------------|
| NAVTEX | SafetyNET | | | HF NBDP |
| | NAV | MET | SAR | |
| <input type="checkbox"/> | <input type="checkbox"/> | <input type="checkbox"/> | <input type="checkbox"/> | <input type="checkbox"/> |

Specifics of equipment used and software version with date updated

| Equipment Type for Ports and Local Area | Software Version | Date of Latest Update |
|---|------------------|-----------------------|
| Maritime VHF & HF Radio | | |
| | | |
| | | |

Summary of National Maritime Safety Information Issued

| 2016 | | 2017 | | 2018 | |
|-------|---------------------------|-------|---------------------------|-------|---------------------------|
| Total | Average Elapsed Time | Total | Average Elapsed Time | Total | Average Elapsed Time |
| Nil | <input type="text"/> Mins | 219 | <input type="text"/> Mins | 136 | <input type="text"/> Mins |

4. International SafetyNET Service

Does your Administration broadcast MSI through the International SafetyNET Service? No

Is it Operational now? No If not indicate the expected date of operation

| NAV/MET Area | Type of Information | Country | LES/LESO | Ocean Region/LES ID | MSI Coastal Warning Area ⁽¹⁾ (if applicable) | Broadcast Schedule (UTC) | Status of Implementation |
|--------------|---------------------|---------|----------|---------------------|---|--------------------------|--------------------------|
| | NAV ⁽²⁾ | * | | | | | |
| | MET ⁽³⁾ | ** | | | | | |
| | SAR ⁽⁴⁾ | | | | | | |

(1) Provide a diagram showing limits of Coastal Warning Areas, including B1 Codes

(2) NAV = Navigational Warnings

(3) MET = Meteorological Warnings

(4) SAR = Search and Rescue Alerts

* - NAVAREA Coordinator responsible for the Area ** - The issuing service nominated by WMO for METAREA services, responsible for the area

5. NAVTEX Coverage

Kiribati does not broadcast MSI via NAVTEX as this is not practiced in the SWP region.

| NAVTEX Coast Station | Frequency | Position of Antenna | Range (NM) | B1 Character | Transmission Times | Language |
|----------------------|-----------|---------------------|------------|--------------|--------------------|----------|
| | | | | | | |
| | | | | | | |
| | | | | | | |
| | | | | | | |

6. HF Narrow Band Direct Printing (NBDP) MSI Broadcast Service

Does your Administration broadcast MSI through HF NBDP? No

Is it Operational now? No If not indicate the expected date of operation

| Country | NBDP Coast Station | Position | Frequency Band | Schedule (UTC) | Status |
|---------|--------------------|----------|---------------------|----------------|--------|
| | | | 4MHz (4210KHz) | | |
| | | | 6MHz (6425KHz) | | |
| | | | 8MHz (8416.5KHz) | | |
| | | | 12MHz (12579KHz) | | |
| | | | 16MHz (16806.5KHz) | | |
| | | | 19MHz (19680.5KHz) | | |
| | | | 22MHz (22376 KHz) | | |
| | | | 26MHz (26100.5 KHz) | | |

7. Does your Administration broadcast MSI through other means?

For Kiribati MSI broadcast service, Navigational warning / safety, Met information and SAR information through radio communication VHF channel 16 to international and domestic vessels.

Broadcasting is carried by Marine Guard via VHF & HF daily at 0803,1603.

8. Operational Issues

Radio Communication Coverage, sometimes VHF & HF communication is poor at far distances like Tarawa to the Line and Phoenix Groups.

9. Contingency Planning

MSI messages sent to the NAVAREA XIV and NAVAREA XI Coordinator by email are promulgated.

10. Capacity Building

Kiribati has attended previous SWPHC MSI courses. Further MSI training/Capacity Building is required.

11. Other Activities

12. National Maritime Website

www.micttd.gov.ki

13. Recommendations

14. Summary

This self-assessment report highlights the MSI activities for the year 2018. MSI database was first established in 2017 after attending MSI training in NZ, hence we have the MSI record for 2017 and 2018 only as stated above. Marine Guard (Kiribati) is very actively involved in providing MSI services to domestic and international vessels within the Kiribati coastal areas through VHF and HF radio communications.

15. Remarks/Additional Information

| |
|--|
| |
|--|

16. Attachments

**National Maritime Safety Information
(MSI) Self Assessment**

FRANCE - New Caledonia

SHOM - MRCC Nouméa

1. Maritime Area

Two maritime areas:

First one is "N" with geographic coordinates as follow

- 14°00.00 S / 156°00.00 E

- 14°00.00 S / 163°30.00 E

- 21°30.00 S / 169°30.00 E

- 21°30.00 S / 174°30.00 E

2. Operational Points of Contact for the National Coordinator

| Institution/Organization | Telephone | Facsimile | Email |
|--------------------------|--------------------|-----------|---------------------|
| MRCC New Caledonia | + 687 29 23 32 | | operations@mrec.nc |
| SHOM | + 33 2 56 31 23 03 | | alain.paire@shom.fr |

3. GMDSS Master Plan

Is plan up to date? Yes

Date of last update:

MSI - National Coordinator Procedures

Do you have access to IMO/IHO/WMO Joint Manual on MSI? Yes

Do you follow the suggested warning format in Joint Manual? Yes

Have you or your staff received MSI Training? Yes

Are you aware of your NAVAREA Coordinator? Yes

Do you pass MSI to NAVAREA Coordinator? Yes

Do you request NAVAREA Coordinator broadcast MSI? Yes

[Remarks about MSI - National Coordinator Procedures]

| MSI Broadcast Service | | | | |
|--------------------------|-------------------------------------|--------------------------|-------------------------------------|--------------------------|
| NAVTEX | SafetyNET | | | HF NBDP |
| | NAV | MET | SAR | |
| <input type="checkbox"/> | <input checked="" type="checkbox"/> | <input type="checkbox"/> | <input checked="" type="checkbox"/> | <input type="checkbox"/> |

Complete Section 4

Specifics of equipment used and software version with date updated

| Equipment Type for Ports and Local Area | Software Version | Date of Latest Update |
|---|------------------|-----------------------|
| INMARSAT-C GMDSS SYSTEM (SAILOR 6110) | | |
| INM-C MESSAGE TERMINAL (SAILOR 6006) | 1.03 | |
| INM-C GMDSS TERMINAL (SAILOR 3027) | 1.05 | |
| INM-C PSU & CHARGER (SAILOR 6081) | 1.00 | |

Summary of National Maritime Safety Information Issued

| 2016 | | 2017 | | 2018 | |
|-------|---------------------------|-------|---------------------------|-------|---------------------------|
| Total | Average Elapsed Time | Total | Average Elapsed Time | Total | Average Elapsed Time |
| 170 | <input type="text"/> Mins | 196 | <input type="text"/> Mins | 202 | <input type="text"/> Mins |

4. International SafetyNET Service

Does your Administration broadcast MSI through the International SafetyNET Service? Yes

Is it Operational now? Yes If not indicate the expected date of operation

| NAV/MET Area | Type of Information | Country | LES/LESO | Ocean Region/LES ID | MSI Coastal Warning Area ⁽¹⁾ (if applicable) | Broadcast Schedule (UTC) | Status of Implementation |
|--------------|---------------------|----------------|-----------|---------------------|---|--------------------------|--------------------------|
| X / XIV | NAV ⁽²⁾ | AUSTRALIA / NZ | AUSSAGUEL | POR | N + D | 0140, 1340 | Operational |
| | MET ⁽³⁾ | ** | | | | | |
| X / XIV | SAR ⁽⁴⁾ | AUSTRALIA / NZ | AUSSAGUEL | POR | N + D | As occasion demands | Operational |

(1) Provide a diagram showing limits of Coastal Warning Areas, including B1 Codes

(2) NAV = Navigational Warnings

(3) MET = Meteorological Warnings

(4) SAR = Search and Rescue Alerts

* NAVAREA Coordinator responsible for the Area ** The issuing service nominated by WMO for METAREA services, responsible for the area

5. NAVTEX Coverage

NIL

| NAVTEX Coast Station | Frequency | Position of Antenna | Range (NM) | B1 Character | Transmission Times | Language |
|----------------------|-----------|---------------------|------------|--------------|--------------------|----------|
| | | | | | | |
| | | | | | | |
| | | | | | | |
| | | | | | | |

6. IIF Narrow Band Direct Printing (NBDP) MSI Broadcast Service

Does your Administration broadcast MSI through HF NBDP? No

Is it Operational now? No If not indicate the expected date of operation

| Country | NBDP Coast Station | Position | Frequency Band | Schedule (UTC) | Status |
|---------|--------------------|----------|---------------------|----------------|--------|
| | | | 4MHz (4210KHz) | | |
| | | | 6MHz (6425KHz) | | |
| | | | 8MHz (8416.5KHz) | | |
| | | | 12MHz (12579KHz) | | |
| | | | 16MHz (16806.5KHz) | | |
| | | | 19MHz (19680.5KHz) | | |
| | | | 22MHz (22376 KHz) | | |
| | | | 26MHz (26100.5 KHz) | | |

7. Does your Administration broadcast MSI through other means?

Yes, we broadcast local navigational warnings by radio VHF 4 times a day. 1900-2000 / 0000-0100 / 0500-0600 / 1000-1100 (all hours in UTC).

8. Operational Issues

NIL

9. Contingency Planning

NIL

10. Capacity Building

The VHF system will be increased from 16 antennas to 17 during the 2nd half of 2019 (Station Yaté - South of new caledonia)
at the end, new caledonia with loyaulty's islands will be covered by 17 stations.

11. Other Activities

[Provide details on any other relevant activities, completed, underway or planned]

12. National Maritime Website

- MRCC Nouméa website: 'www.mrcc.nc'
- National Coordinator: 'www.shom.fr'

13. Recommendations

NIL

14. Summary

NIL

15. Remarks/Additional Information

NIL

16. Attachments

NIL

National Maritime Safety Information
(MSI) Self Assessment

FIJI

Maritime Safety Authority of Fiji (MSAF)

1. Maritime Area

Fiji Coastal Navigational Warning area covers Fiji waters including 200 nautical miles exclusive economic zone (EEZ) of Fiji for broadcasting of navigational warnings via Coast Radio Station (CRS) on VHF/HF.

2. Operational Points of Contact for the National Coordinator

| Institution/Organization | Telephone | Facsimile | Email |
|--------------------------|---------------|---------------|--------------------|
| MSAF | +679 3315 266 | +679 3313 127 | skumar@msaf.com.fj |
| | | | msi@msaf.com.fj |

3. GMDSS Master Plan

Is plan up to date? No

Date of last update;

MSI - National Coordinator Procedures

Do you have access to IMO/IHO/WMO Joint Manual on MSI? Yes

Do you follow the suggested warning format in Joint Manual? Yes

Have you or your staff received MSI Training? Yes

Are you aware of your NAVAREA Coordinator? Yes

Do you pass MSI to NAVAREA Coordinator? Yes

Do you request NAVAREA Coordinator broadcast MSI? Yes

[Remarks about MSI - National Coordinator Procedures]

| MSI Broadcast Service | | | | | |
|--------------------------|-------------------------------------|--------------------------|--------------------------|--------------------------|--|
| NAVTEX | SafetyNET | | | HF NBDP | |
| | NAV | MET | SAR | | |
| <input type="checkbox"/> | <input checked="" type="checkbox"/> | <input type="checkbox"/> | <input type="checkbox"/> | <input type="checkbox"/> | |

Complete Section 4

Specifics of equipment used and software version with date updated

| Equipment Type for Ports and Local Area | Software Version | Date of Latest Update |
|---|------------------|-----------------------|
| Maritime VHF & HF Radio | | |
| | | |
| | | |

Summary of National Maritime Safety Information Issued

| 2016 | | 2017 | | 2018 | |
|-------|---------------------------|-------|---------------------------|-------|---------------------------|
| Total | Average Elapsed Time | Total | Average Elapsed Time | Total | Average Elapsed Time |
| 70 | <input type="text"/> Mins | 70 | <input type="text"/> Mins | 64 | <input type="text"/> Mins |

4. International SafetyNET Service

Does your Administration broadcast MSI through the International SafetyNET Service? No

Is it Operational now? No If not indicate the expected date of operation

| NAV/MET Area | Type of Information | Country | LES/LESO | Ocean Region/LES ID | MSI Coastal Warning Area ⁽¹⁾ (if applicable) | Broadcast Schedule (UTC) | Status of Implementation |
|--------------|---------------------|---------|----------|---------------------|---|--------------------------|--------------------------|
| | NAV ⁽²⁾ | * | | | | | |
| | MET ⁽³⁾ | ** | | | | | |
| | SAR ⁽⁴⁾ | | | | | | |

(1) Provide a diagram showing limits of Coastal Warning Areas, including B1 Codes (2) NAV = Navigational Warnings
 (3) MET = Meteorological Warnings (4) SAR = Search and Rescue Alerts
 * - NAVAREA Coordinator responsible for the Area ** - The issuing service nominated by WMO for METAREA services, responsible for the area

5. NAVTEX Coverage

Fiji does not broadcast MSI via NAVTEX as this is not practiced in the SWP region.

| NAVTEX Coast Station | Frequency | Position of Antenna | Range (NM) | B1 Character | Transmission Times | Language |
|----------------------|-----------|---------------------|------------|--------------|--------------------|----------|
| | | | | | | |
| | | | | | | |
| | | | | | | |
| | | | | | | |

6. HF Narrow Band Direct Printing (NBDP) MSI Broadcast Service

Does your Administration broadcast MSI through HF NBDP? No

Is it Operational now? No If not indicate the expected date of operation

| Country | NBDP Coast Station | Position | Frequency Band | Schedule (UTC) | Status |
|---------|--------------------|----------|---------------------|----------------|--------|
| | | | 4MHz (4210KHz) | | |
| | | | 6MHz (6425KHz) | | |
| | | | 8MHz (8416.5KHz) | | |
| | | | 12MHz (12579KHz) | | |
| | | | 16MHz (16806.5KHz) | | |
| | | | 19MHz (19680.5KHz) | | |
| | | | 22MHz (22376 KHz) | | |
| | | | 26MHz (26100.5 KHz) | | |

7. Does your Administration broadcast MSI through other means?

MSAF as the competent authority disseminates MSI by e-mail in the first instance. MSI are also uploaded on the MSAF website.

Broadcasting is carried by CRS via VHF & HF daily at 0803, 1203, 1603 & 2003.

8. Operational Issues

Coverage for HF transmission is limited and inconsistent. HF equipment set used by CRS is obsolete. Current location of CRS is not conducive to good and consistent communication coverage. CRS is in urgent need of proper GMDSS equipment to fulfill its role. Plans are in progress to relocate the radio station from its current location to the new site including new GMDSS equipment.

9. Contingency Planning

MSI messages sent to the NAVAREA XIV Coordinator, RCCNZ by email. RCCNZ promulgates important messages as NAVAREA XIV Warnings on SafetyNET.

10. Capacity Building

MSAF along with the representatives of Fiji Navy Hydrographic Office have participated in the past MSI training courses in SWP region. Assistance is required for the continuation of this training.

11. Other Activities

MSAF maintains a register of 406 MHz EPIRBs that are coded with the Fiji country code 520. This serves as a record of EPIRBs installed on Fiji registered vessel and supports the Fiji Rescue Coordination Centre (RCC) for Search and Rescue (SAR) purposes.

12. National Maritime Website

www.msaf.com.fj

13. Recommendations

It is strongly recommended that Capacity Building Fund provides assistance in dispatching necessary experts to Fiji for conducting a feasibility study for the provision of GMDSS equipments for broadcasting of MSI.

14. Summary

This self-assessment report highlights the MSI activities for the year 2018. Fiji is very actively involved in providing MSI services to the maritime industry locally including navy, port operators, primary hydrographic charting authorities for updating charts & publications.

15. Remarks/Additional Information

Average Elapsed Times mentioned in the Summary of National Maritime Safety Information Issued for the years 2016 to 2018 is approximately 45 minutes although they were not recorded.

16. Attachments

**National Maritime Safety Information
(MSI) Self Assessment**

Cook Islands

Ministry of Transport

1. Maritime Area

RCC New Zealand covers the Cook Islands waters including the 200 nautical mile Exclusive Economic Zone (EEZ)

2. Operational Points of Contact for the National Coordinator

| Institution/Organization | Telephone | Facsimile | Email |
|--------------------------|------------|------------|---|
| Ministry of Transport | +682 20321 | +682 24321 | saungaki.rasmussen@cookislands.gov.ck.z |
| | | | |

3. GMDSS Master Plan

Is plan up to date? No Date of last update;

MSI - National Coordinator Procedures

Do you have access to IMO/IHO/WMO Joint Manual on MSI? Yes

Do you follow the suggested warning format in Joint Manual? Yes

Have you or your staff received MSI Training? Yes

Are you aware of your NAVAREA Coordinator? Yes

Do you pass MSI to NAVAREA Coordinator? Yes

Do you request NAVAREA Coordinator broadcast MSI? Yes

[Remarks about MSI - National Coordinator Procedures]

| MSI Broadcast Service | | | | | |
|--------------------------|--------------------------|--------------------------|--------------------------|--------------------------|--|
| NAVTEX | SafetyNET | | | HF NBDP | |
| | NAV | MET | SAR | | |
| <input type="checkbox"/> | <input type="checkbox"/> | <input type="checkbox"/> | <input type="checkbox"/> | <input type="checkbox"/> | |

Specifics of equipment used and software version with date updated

| Equipment Type for Ports and Local Area | Software Version | Date of Latest Update |
|---|------------------|-----------------------|
| | | |
| | | |
| | | |

Summary of National Maritime Safety Information Issued

| 2016 | | 2017 | | 2018 | |
|-------|----------------------|-------|----------------------|-------|----------------------|
| Total | Average Elapsed Time | Total | Average Elapsed Time | Total | Average Elapsed Time |
| 0 | Mins | 0 | Mins | 2 | Mins |

4. International SafetyNET Service

Does your Administration broadcast MSI through the International SafetyNET Service? **No**

Is it Operational now? **No** If not indicate the expected date of operation

| NAV/MET Area | Type of Information | Country | LES/LESO | Ocean Region/LES ID | MSI Coastal Warning Area ⁽¹⁾ (if applicable) | Broadcast Schedule (UTC) | Status of Implementation |
|--------------|---------------------|---------|----------|---------------------|---|--------------------------|--------------------------|
| | NAV ⁽²⁾ | * | | | | | Non-Operational |
| | MET ⁽³⁾ | ** | | | | | |
| | SAR ⁽⁴⁾ | | | | | | Non-Operational |

(1) Provide a diagram showing limits of Coastal Warning Areas, including B1 Codes

(2) NAV = Navigational Warnings

(3) MET – Meteorological Warnings

(4) SAR – Search and Rescue Alerts

* - NAVAREA Coordinator responsible for the Area ** - The issuing service nominated by WMO for METAREA services, responsible for the area

5. NAVTEX Coverage

Cook Islands does not broadcast coastal warnings via NAVTEX.

| NAVTEX Coast Station | Frequency | Position of Antenna | Range (NM) | B1 Character | Transmission Times | Language |
|----------------------|-----------|---------------------|------------|--------------|--------------------|----------|
| | | | | | | |
| | | | | | | |
| | | | | | | |
| | | | | | | |

6. HF Narrow Band Direct Printing (NBDP) MSI Broadcast Service

Does your Administration broadcast MSI through HF NBDP? **No**

Is it Operational now? **No** If not indicate the expected date of operation

| Country | NBDP Coast Station | Position | Frequency Band | Schedule (UTC) | Status |
|---------|--------------------|----------|----------------------|----------------|--------|
| | | | 4MHz (4210KHz) | | |
| | | | 6M11z (6425K11z) | | |
| | | | 8MHz (8416.5KHz) | | |
| | | | 12MHz (12579KHz) | | |
| | | | 16M11z (16806.5K11z) | | |
| | | | 19MHz (19680.5KHz) | | |
| | | | 22M11z (22376 K11z) | | |
| | | | 26MHz (26100.5 KHz) | | |

7. Does your Administration broadcast MSI through other means?

Ministry of Transport, as the competent authority, disseminates MSI via email in the first instance. Broadcast is carried out by Bluesky HF radio via VHF and HF daily at 0815 and 2015. Navigational Warnings affecting SOLAS ships are sent to the NAVAREA XIV Coordinator.

8. Operational Issues

Receiving and transmitting becomes difficult the further you are away from the main islands. Sometimes you can't hear.

9. Contingency Planning

Navigational Warnings affecting SOLAS ships are sent to the NAVAREA XIV Coordinator.

10. Capacity Building

Ministry of Transport, as well as members of Cook Islands Hydrographic Office have participated in the past MSI training courses in SWP region. Assistance is required for the continuation of this training.

11. Other Activities

Ministry of Transport (MSI) helps and supports the Cook Islands Rescue Coordination Centre (RCC) for Search and Rescue (SAR) purposes.

12. National Maritime Website

www.transport.gov.ck

13. Recommendations

It is strongly recommended that the Capacity Building Fund provides assistance in dispatching necessary experts to Cook Islands for conducting a feasibility study for the provision of GMDSS equipment for broadcasting of MSI under NZ guidance.

14. Summary

This self-assessment report highlights the MSI activities for the year 2018. Cook Islands is very actively involved in providing MSI services to the maritime industry locally including local operations and RCC New Zealand and LINZ.

15. Remarks/Additional Information

None

16. Attachments

| |
|--|
| |
|--|

**National Maritime Safety Information
(MSI) Self Assessment**

FRANCE

JRCC TAHITI

1. Maritime Area

French Polynesian Area R is a defined area for the purpose of broadcasting Coastal Navigation Warnings via Inmarsat SafetyNET

The limits of the area are: 04-00S 149-00W to 04-00S 132-00W to 31-00S 132-00W to 31-00S 158-00W to 23-30S 156-00W to 17-00S 156-00W to 13-00S 158-00W to 13-00S 149-00W

2. Operational Points of Contact for the National Coordinator

| Institution/Organization | Telephone | Facsimile | Email |
|--------------------------|---------------|------------------|-----------------|
| JRCC TAHITI | +689 40541616 | +689 40 42 39 15 | contact@jrcc.pf |
| | | | |

3. GMDSS Master Plan

Is plan up to date? Yes Date of last update; July 2017

MSI - National Coordinator Procedures

Do you have access to IMO/IHO/WMO Joint Manual on MSI? Yes

Do you follow the suggested warning format in Joint Manual? Yes

Have you or your staff received MSI Training? Yes

Are you aware of your NAVAREA Coordinator? Yes

Do you pass MSI to NAVAREA Coordinator? Yes

Do you request NAVAREA Coordinator broadcast MSI? Yes

[Remarks about MSI - National Coordinator Procedures]

| MSI Broadcast Service | | | | |
|--------------------------|-------------------------------------|--------------------------|-------------------------------------|--------------------------|
| NAVTEX | SafetyNET | | | IIF NBDP |
| | NAV | MET | SAR | |
| <input type="checkbox"/> | <input checked="" type="checkbox"/> | <input type="checkbox"/> | <input checked="" type="checkbox"/> | <input type="checkbox"/> |

Complete Section 4

Specifics of equipment used and software version with date updated

| Equipment Type for Ports and Local Area | Software Version | Date of Latest Update |
|---|------------------|-----------------------|
| Thrane & Thrane easyMail | V1.15 | Build 0027 |
| | | |
| | | |

Summary of National Maritime Safety Information Issued

| 2016 | | 2017 | | 2018 | |
|-------|---------------------------|-------|---------------------------|-------|---------------------------|
| Total | Average Elapsed Time | Total | Average Elapsed Time | Total | Average Elapsed Time |
| 22 | <input type="text"/> Mins | 36 | <input type="text"/> Mins | 37 | <input type="text"/> Mins |

4. International SafetyNET Service

Does your Administration broadcast MSI through the International SafetyNET Service? **Yes**

Is it Operational now? **Yes** If not indicate the expected date of operation

| NAV/MET Area | Type of Information | Country | LES/LESO | Ocean Region/LES ID | MSI Coastal Warning Area ⁽¹⁾ (if applicable) | Broadcast Schedule (UTC) | Status of Implementation |
|--------------|---------------------|---------|----------------|---------------------|---|--------------------------|--------------------------|
| | NAV ⁽²⁾ | * NZ | Aussaguel at Y | POR | R | 0250,1450 | Operational |
| | MET ⁽³⁾ | ** | | | | | |
| | SAR ⁽⁴⁾ | FR | Aussaguel | POR | | | Operational |

(1) Provide a diagram showing limits of Coastal Warning Areas, including B1 Codes (2) NAV – Navigational Warnings
 (3) MET – Meteorological Warnings (4) SAR – Search and Rescue Alerts
 * - NAVAREA Coordinator responsible for the Area ** - The issuing service nominated by WMO for METAREA services, responsible for the area

5. NAVTEX Coverage

French Polynesia does not broadcast coastal warnings via NAVTEX.

| NAVTEX Coast Station | Frequency | Position of Antenna | Range (NM) | B1 Character | Transmission Times | Language |
|----------------------|-----------|---------------------|------------|--------------|--------------------|----------|
| | | | | | | |
| | | | | | | |
| | | | | | | |
| | | | | | | |

6. HF Narrow Band Direct Printing (NBDP) MSI Broadcast Service

Does your Administration broadcast MSI through HF NBDP? **No**

Is it Operational now? If not indicate the expected date of operation

| Country | NBDP Coast Station | Position | Frequency Band | Schedule (UTC) | Status |
|---------|--------------------|----------|---------------------|----------------|--------|
| | | | 4MHz (4210KHz) | | |
| | | | 6MHz (6425KHz) | | |
| | | | 8MHz (8416.5KHz) | | |
| | | | 12MHz (12579KHz) | | |
| | | | 16MHz (16806.5KHz) | | |
| | | | 19MHz (19680.5KHz) | | |
| | | | 22MHz (22376 KHz) | | |
| | | | 26MHz (26100.5 KHz) | | |

7. Does your Administration broadcast MSI through other means?

In addition to SafetyNET broadcasts; JRCC Tahiti also broadcast navigation warnings on VHF, MF and HF if necessary.

8. Operational Issues

None

9. Contingency Planning

10. Capacity Building

11. Other Activities

12. National Maritime Website

www.jrcc.pf/infonaut

13. Recommendations

None

14. Summary

15. Remarks/Additional Information

16. Attachments

National Maritime Safety Information
(MSI) Self Assessment

NIUE

Ministry of Infrastructure

1. Maritime Area

Niue's Coastal Navigational Warning area covers ~15 NM for broadcasting of navigational warnings via Niue's Marine Radio on VIIF.

2. Operational Points of Contact for the National Coordinator

| Institution/Organization | Telephone | Facsimile | Email |
|--------------------------|----------------------|-----------|---------------------------|
| Department of Transport | +683 6983/ +683 4047 | | lynsey.talagi@mail.gov.nu |
| | | | |

3. GMDSS Master Plan

Is plan up to date? No Date of last update;

MSI - National Coordinator Procedures

Do you have access to IMO/IHO/WMO Joint Manual on MSI? Yes

Do you follow the suggested warning format in Joint Manual? Yes

Have you or your staff received MSI Training? Yes

Are you aware of your NAVAREA Coordinator? Yes

Do you pass MSI to NAVAREA Coordinator? No

Do you request NAVAREA Coordinator broadcast MSI? No

The National MSI Coordinator has not received IHO-recognised MSI Training. Telecom Niue Ltd staff, who operate the marine radio, have had MSI training. No MSI to date has been sent to the NAVAREA Coordinator

| MSI Broadcast Service | | | | | | |
|--------------------------|--------------------------|--------------------------|--------------------------|--------------------------|--------------------------|--------------------------|
| NAVTEX | SafetyNET | | | HF NBDP | | |
| | NAV | MET | SAR | | | |
| <input type="checkbox"/> | <input type="checkbox"/> | <input type="checkbox"/> | <input type="checkbox"/> | <input type="checkbox"/> | <input type="checkbox"/> | <input type="checkbox"/> |

Specifics of equipment used and software version with date updated

| Equipment Type for Ports and Local Area | Software Version | Date of Latest Update |
|---|------------------|-----------------------|
| Maritime VHF | | |
| | | |
| | | |

Summary of National Maritime Safety Information Issued

| 2016 | | 2017 | | 2018 | |
|-------|---------------------------|-------|---------------------------|-------|---------------------------|
| Total | Average Elapsed Time | Total | Average Elapsed Time | Total | Average Elapsed Time |
| 0 | <input type="text"/> Mins | 0 | <input type="text"/> Mins | 0* | <input type="text"/> Mins |

4. International SafetyNET Service

Does your Administration broadcast MSI through the International SafetyNET Service? No

Is it Operational now? If not indicate the expected date of operation

| NAV/MET Area | Type of Information | Country | LES/LESO | Ocean Region/I.F.S ID | MSI Coastal Warning Area ⁽³⁾ (if applicable) | Broadcast Schedule (UTC) | Status of Implementation |
|--------------|---------------------|---------|----------|-----------------------|---|--------------------------|--------------------------|
| | NAV ⁽²⁾ | * | | | | | |
| | MET ⁽³⁾ | ** | | | | | |
| | SAR ⁽⁴⁾ | | | | | | |

(1) Provide a diagram showing limits of Coastal Warning Areas, including B1 Codes

(2) NAV = Navigational Warnings

(3) MET = Meteorological Warnings

(4) SAR = Search and Rescue Alerts

* - NAVAREA Coordinator responsible for the Area

** - The issuing service nominated by WMO for METAREA services, responsible for the area

5. NAVTEX Coverage

Niue does not broadcast MSI via NAVTEX as this is not practiced in the SWP region.

| NAVTEX Coast Station | Frequency | Position of Antenna | Range (NM) | B1 Character | Transmission Times | Language |
|----------------------|-----------|---------------------|------------|--------------|--------------------|----------|
| | | | | | | |
| | | | | | | |
| | | | | | | |
| | | | | | | |

6. HF Narrow Band Direct Printing (NBDP) MSI Broadcast Service

Does your Administration broadcast MSI through IIF NBDP? No

Is it Operational now? If not indicate the expected date of operation

| Country | NBDP Coast Station | Position | Frequency Band | Schedule (UTC) | Status |
|---------|--------------------|----------|---------------------|----------------|--------|
| | | | 4MHz (4210KHz) | | |
| | | | 6MHz (6425KHz) | | |
| | | | 8MHz (8416.5KHz) | | |
| | | | 12MHz (12579KHz) | | |
| | | | 16MHz (16806.5KHz) | | |
| | | | 19MHz (19680.5KHz) | | |
| | | | 22MHz (22376 KHz) | | |
| | | | 26MHz (26100.5 KHz) | | |

7. Does your Administration broadcast MSI through other means?

MSI broadcast via email to local stakeholders has been considered. Other options include tv and radio via the Broadcasting Corporation of Niue.

8. Operational Issues

No full VHF Ch 16 coverage around Niue, although anticipated in mid-2019.

9. Contingency Planning

MSI messages sent to the NAVAREA XIV Coordinator, RCCNZ by email to be promulgated.

10. Capacity Building

Staff from Telecom Niue Ltd have attended the regional MSI training in 2016 and 2018, however, they haven't shared information with stakeholders. The National MSI Coordinator has not attended an IHO-recognised MSI training, however, receives assistance from RCCNZ as required.

Assistance is required to run an in-country MSI training with local stakeholders.

11. Other Activities

The Department of Transport requests updates from RCCNZ of its register of 406 MHz EPIRBs that are coded to Niue. This includes vessels on the Niue Ship Registry. This is important for Search and Rescue purposes.

12. National Maritime Website

None

13. Recommendations

It is strongly recommended that Capacity Building Fund provides assistance to hold an in-country MSI training in 2019 with local stakeholders.

14. Summary

This self-assessment report highlights the MSI activities for the year 2018. Niue still needs to setup its processes for receiving information from stakeholders. The National MSI Coordinator provides LINZ with information to update charts.

15. Remarks/Additional Information

* Although "0" was recorded for MSI issued in 2018, it should be noted that Niue communicated with the NAVAREA XIV Coordinator regarding possible MSI resulting from intended AToN maintenance, however no outage resulted from this maintenance.

Weather services are broadcast on local tv, radio and Facebook.

16. Attachments

National Maritime Safety Information
(MSI) Self Assessment
Tuvalu

1. Maritime Area

TUVALU Coastal Navigational Warning area covers
Tuvalu waters including 200 nautical miles Exclusive
Economic Zone (EEZ) of Tuvalu.

2. Operational Points of Contact for the National Coordinator

| Institution/Organization | Telephone | Facsimile | Email |
|--------------------------|---------------|-----------|---|
| MCT | (688) 2004/85 | NIL | lpanela@gmail.com Taco.pitot@gmail.com |

3. GMDSS Master Plan

Is plan up to date? No Date of last update;

MSI - National Coordinator Procedures

- Do you have access to IMO/IHO/WMO Joint Manual on MSI? Yes
- Do you follow the suggested warning format in Joint Manual? Yes
- Have you or your staff received MSI Training? Yes
- Are you aware of your NAVAREA Coordinator? Yes
- Do you pass MSI to NAVAREA Coordinator? Yes
- Do you request NAVAREA Coordinator broadcast MSI? Yes

| MSI Broadcast Service | | | | | | |
|--------------------------|-------------------------------------|--------------------------|--------------------------|--------------------------|--------------------------|--|
| NAVTEX | SafetyNET | | | HF NBDP | | |
| | NAV | MET | SAR | | | |
| <input type="checkbox"/> | <input checked="" type="checkbox"/> | <input type="checkbox"/> | <input type="checkbox"/> | <input type="checkbox"/> | <input type="checkbox"/> | |

Specifics of equipment used and software version with date updated

| Equipment Type for Ports and Local Area | Software Version | Date of Latest Update |
|---|------------------|-----------------------|
| | | |
| | | |
| | | |

Summary of National Maritime Safety Information Issued

| 2016 | | 2017 | | 2018 | |
|-------|----------------------|-------|----------------------|-------|----------------------|
| Total | Average Elapsed Time | Total | Average Elapsed Time | Total | Average Elapsed Time |
| 0 | Mins | 0 | Mins | 1 | Mins |

4. International SafetyNET Service

Does your Administration broadcast MSI through the International SafetyNET Service? **No**

Is it Operational now? **No** If not indicate the expected date of operation

| NAV/MET Area | Type of Information | Country | LES/LESO | Ocean Region/LES ID | MSI Coastal Warning Area ⁽¹⁾ (if applicable) | Broadcast Schedule (UTC) | Status of Implementation |
|--------------|---------------------|---------|----------|---------------------|---|--------------------------|--------------------------|
| | NAV ⁽²⁾ | * | | | | | |
| | MET ⁽³⁾ | ** | | | | | |
| | SAR ⁽⁴⁾ | | | | | | |

(1) Provide a diagram showing limits of Coastal Warning Areas, including B1 Codes

(2) NAV = Navigational Warnings

(3) MET = Meteorological Warnings

(4) SAR = Search and Rescue Alerts

* - NAVAREA Coordinator responsible for the Area

** - The issuing service nominated by WMO for METAREA services, responsible for the area

5. NAVTEX Coverage

Tuvalu does not broadcast MSI via NAVTEX as this is not practiced in the SWP region.

| NAVTEX Coast Station | Frequency | Position of Antenna | Range (NM) | B1 Character | Transmission Times | Language |
|----------------------|-----------|---------------------|------------|--------------|--------------------|----------|
| | | | | | | |
| | | | | | | |
| | | | | | | |
| | | | | | | |

6. HF Narrow Band Direct Printing (NBDP) MSI Broadcast Service

Does your Administration broadcast MSI through HF NBDP? **No**

Is it Operational now? **No** If not indicate the expected date of operation

| Country | NBDP Coast Station | Position | Frequency Band | Schedule (UTC) | Status |
|---------|--------------------|----------|---------------------|----------------|--------|
| | | | 4MHz (4210KHz) | | |
| | | | 6MHz (6425KHz) | | |
| | | | 8MHz (8416.5KHz) | | |
| | | | 12MHz (12579KHz) | | |
| | | | 16MHz (16806.5KHz) | | |
| | | | 19MHz (19680.5KHz) | | |
| | | | 22MHz (22376 KHz) | | |
| | | | 26MHz (26100.5 KHz) | | |

7. Does your Administration broadcast MSI through other means?

No

8. Operational Issues

MTC is working with HRM to establish new position to work after the matters.

9. Contingency Planning

MSI Message have to send by email to NAVAREA XIV Coordinator, RCCNZ.

10. Capacity Building

Tuvalu has attended previous SWPHC MSI courses.

11. Other Activities

Working with SPC on the Risk Assessment that took place 2018.

12. National Maritime Website

NIL

13. Recommendations

Hopefull that UK IHO will assist Tuvalu in updating old charters for the benefit of local/Internat'l vessels using our water

14. Summary

Tuvalu will continue to work with LINTZ and UK IHO and other relevant parties to provide

15. Remarks/Additional Information

NIL

H. notes and other interesting matter that can benefit Tuvalu with new activities 2018

16. Attachments