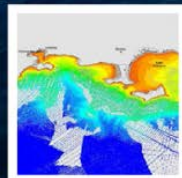


Core maritime geospatial
databases download at **diffusion.shom.fr**



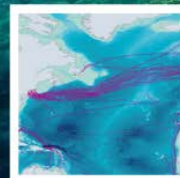
Maritime boundaries



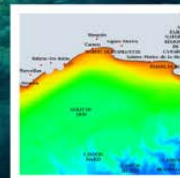
Bathymetry



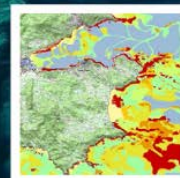
Wrecks



Underwater cables
and pipelines



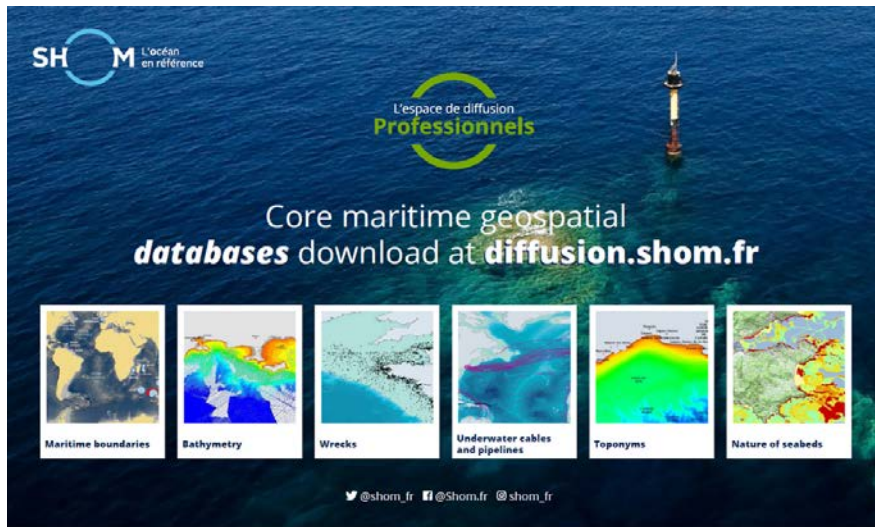
Toponyms



Nature of seabeds

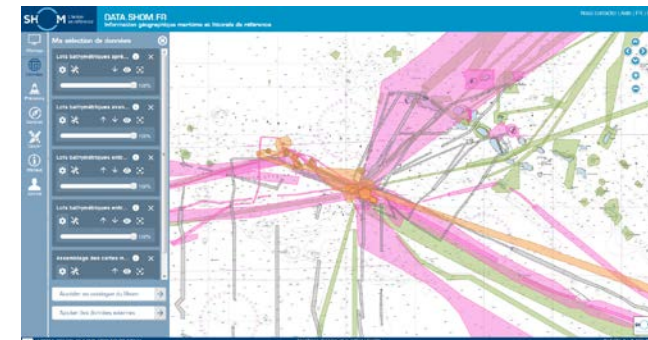
Data discovery & sharing

SWPHC 16 – Niue - technical workshop



Shom MSDI portals
[Data.shom.fr](https://data.shom.fr)
[Diffusion.shom.fr](https://diffusion.shom.fr)
&
limitesmaritimes.gouv.fr

- **Core data** distributed under CC-BY-SA 4.0 = **open license** with mention of the author + share alike
- **More data visible but not for download**
- **Professional services and products (€)**
- Regularly updated with new data and products
- Any other inquiries :
bps@shom.fr (special requests)
cc : dmi-rex-d@shom.fr (external relations)



Shom's maritime and coastal geographic information portal : data.shom.fr

Since December 2017, in accordance with France open data policy, Shom has widely opened up access to its core data:

bathymetric data,

wrecks,

cables,

bottom types,

maritime limits,

toponyms databases

are distributed under Creative Commons « CC-BY-SA 4.0 » licence.

Those evolutions **can all be followed via Shom's Twitter account** (@shom_en & @shom_fr).

Other data available freely on the portal, but not for download Including Web services (WMS, WCS, etc)

A **detailed description** of the portal functions and contents is available on Shom website (<http://www.shom.fr/les-services-en-ligne/portail-datashomfr/>).

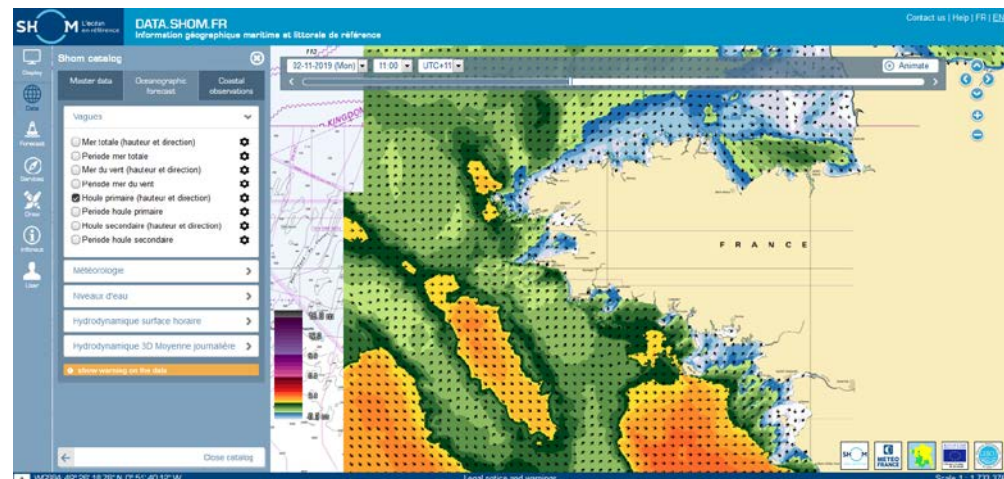
Data organised according to the following topics:

Master data: *charts, maritime boundaries, maritime and coastal databases, coastal altimetry, bathymetry, vertical datums, sedimentology, tides and currents and marine archives;*

Oceanographic forecast: *sea state, meteorology, sea level, hydrodynamic;*

Coastal observations: *HF radar and tide gauge data*

**However, not all these information
are available on SWPHC region.**



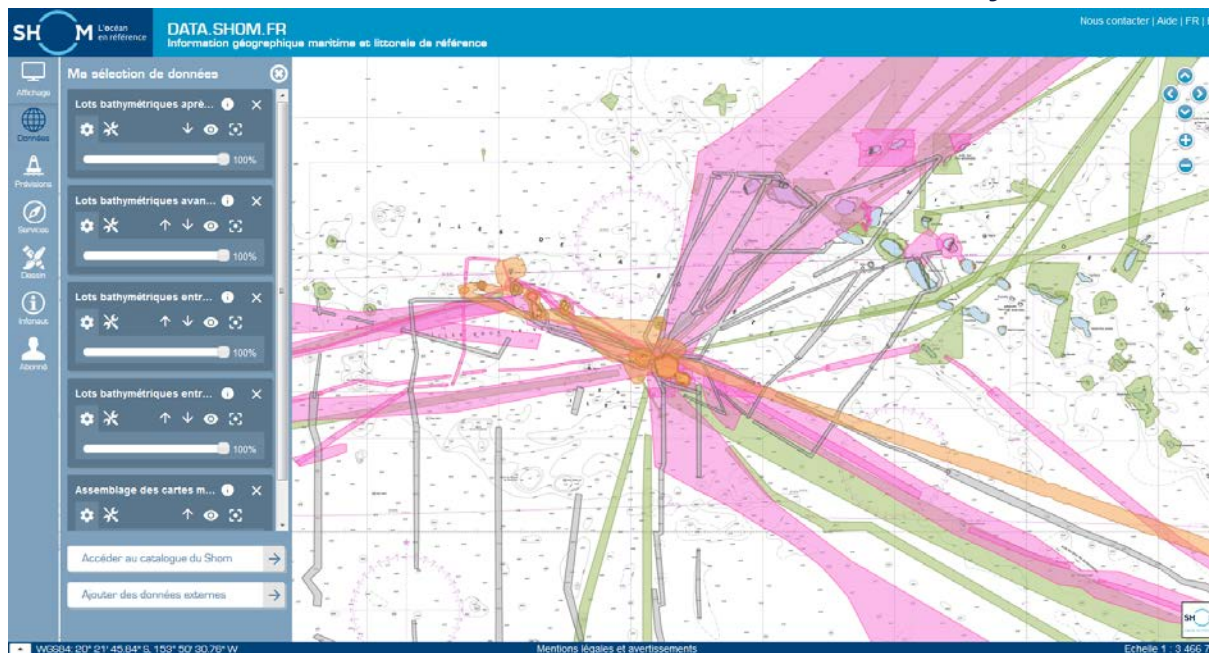
Focus on main themes : bathymetry - water levels - maritime limits

➤ Bathymetry

In waters under French jurisdiction in the SWPHC region, Shom's bathymetric data are accessible in the form of **bathymetric datasets (soundings)**:

<http://diffusion.shom.fr/pro/amenagement/bathymetrie/lots-bathy.html>

! Only data with no restricted distribution - Shom database may contain more data

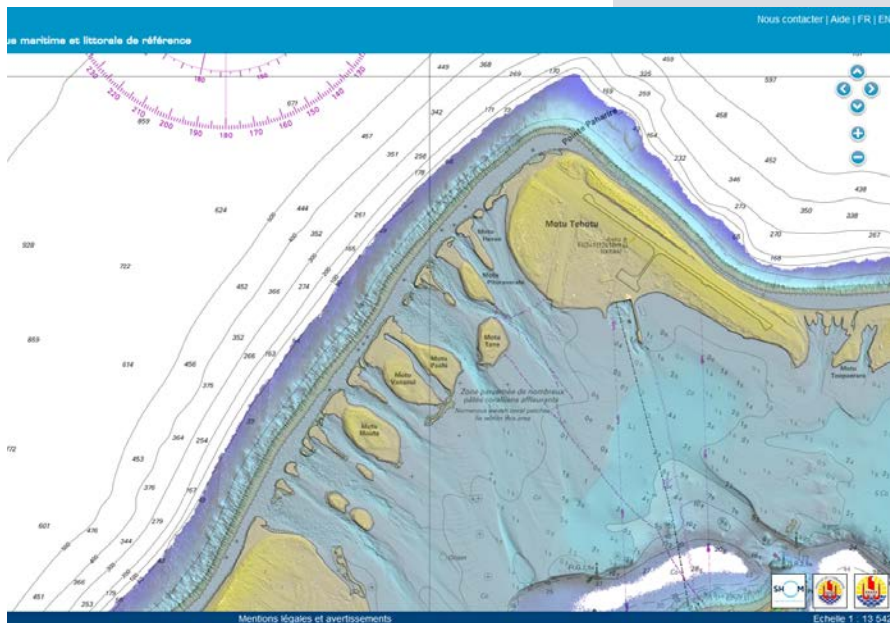


➤ Bathymetry

E.g. Lidar, DTM, soundings

Lidar in French Polynesia

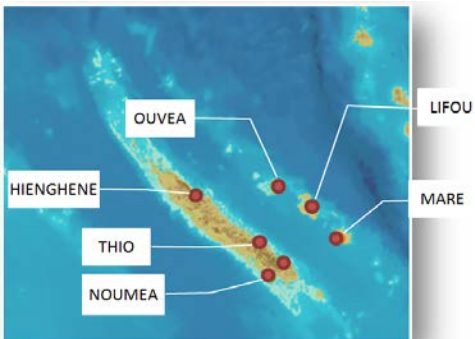
The screenshot shows the SHOM website interface. At the top, there is a navigation menu with the following items: Professionnels, ACCUEIL, NAVIGATION, RISQUES, RESSOURCES, AMÉNAGEMENT, ENVIRONNEMENT. The main content area is titled "MNT bathymétrique de façade de la Guadeloupe et de la Martinique". Below the title, there are three small thumbnail images showing bathymetric maps of different coastal areas. A "Description du produit" section provides details about the data: "Le MNT bathymétrique de façade de la Guadeloupe et de la Martinique à une résolution de 0.001* (~ 100 m) a été réalisé dans le cadre du projet HOMONIM. Le MNT englobe une partie des îles des petites Antilles, depuis Montserrat au nord jusqu'à Sainte-Lucie au sud. Il s'étend au large jusqu'à 5800 m de profondeur. Le MNT est destiné à être implémenté dans les modèles hydrodynamiques afin de produire des prévisions aussi précises que possible des hauteurs d'eau et d'états de mer à la côte et donc d'améliorer la pertinence de la Vigilance Vagues-Submersion." A "Gratuit" button is visible in the bottom right corner of the product description area.



Focus on main themes : bathymetry - water levels - maritime limits

➤ Tide gauges

All real time and processed tide gauge measurements collected under Shom Refmar programme are freely accessible on the web <http://data.shom.fr/#donnees/refmar> for all areas under French jurisdiction.



Including
 New Caledonia*6
 French Polynesia*6
 Wallis & Futuna*2
 in SWP region



- In June 2018, Shom and the General Secretariat for the Sea (SG Mer) opened the French **maritime limits portal**:

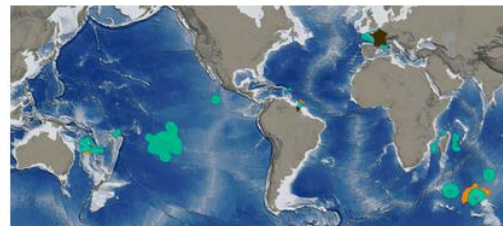
<https://limitesmaritimes.gouv.fr/>

Operated by Shom as the national expert and reference body for maritime delimitation, this portal is coordinated under the umbrella of the SG Mer.

It aims to be the national site for consultation and diffusion of the **official information** on the maritime delimitations of France, particularly the **legal references and digital data**.



News



17 December 2018 - Decree No 2018-1157 of 14 December 2018

Official publication of Decree No 2018-1157 of 14 December 2018 relative to the maritime limits agreement between France and Suriname signed in Paris on 08 November 2017.

LINK TO DECREE (LÉGIFRANCE)

The portal is updated accordingly to this decree.

► Direct access to interactive chart

[Data.shom.fr](https://data.shom.fr) with maritime limits and boundaries

► Access to help

[USER GUIDE ON INTERACTIVE CHART](#)

► Download the complete data in digital format (SHP/GML)

Weight : 3.4 Mo
Date : 01-2019

[DOWNLOAD](#)

► Access data by using flows

WFS flow

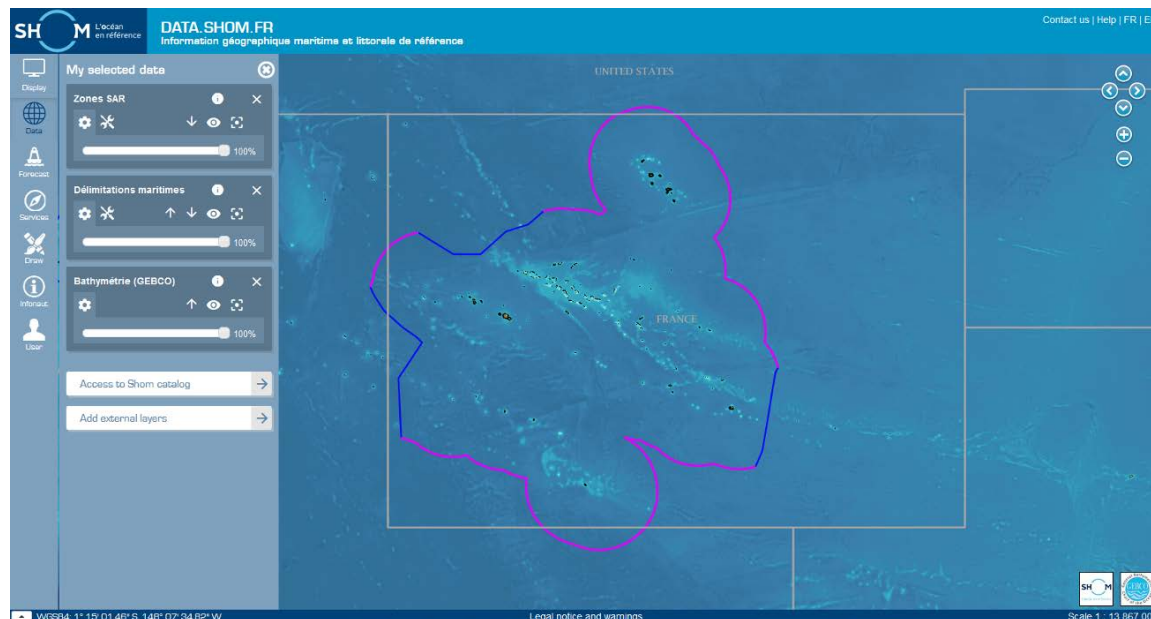
<http://services.data.shom.fr/DELMAR/wfs>

WMS flow

<http://services.data.shom.fr/DELMAR/wms/v?>

► Download maps

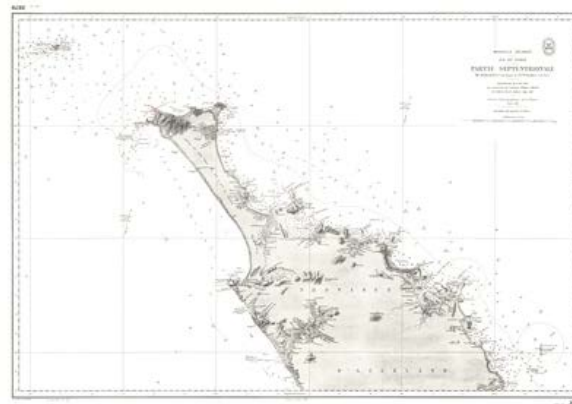
[CHART CATALOGUE](#)

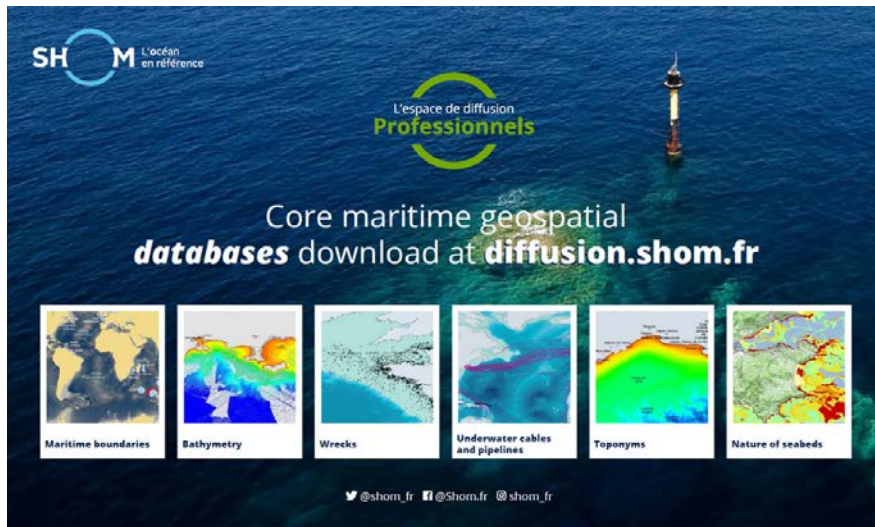


Other data and MSDI progress

further developments have been implemented with **new online services data layers** on a regular basis. Hereafter are listed some of the latest evolutions:

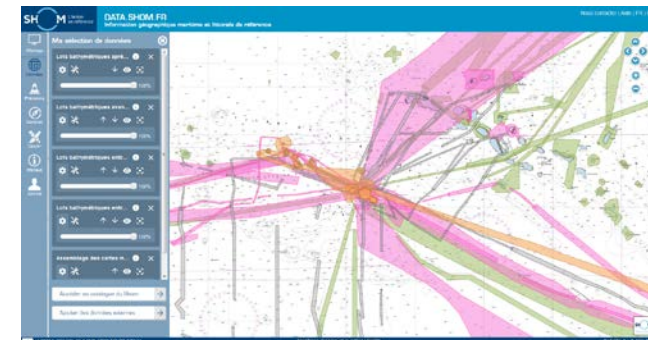
- Improved content for **oceanographic data**
- Improved **cartographic tools**
- **Timeline** function : time synchronisation of layers to produce animated features
- New layer on **administrative limits**
- New **bathymetric terrain models**
- Maritime **archives**: old charts and survey sheets have been scanned and are now available on the web site





Shom MSDI portals
[Data.shom.fr](https://data.shom.fr)
[Diffusion.shom.fr](https://diffusion.shom.fr)
&
limitesmaritimes.gouv.fr

- **Core data** distributed under CC-BY-SA 4.0 = **open license** with mention of the author + share alike
- **More data visible but not for download**
- **Professional services and products (€)**
- Regularly updated with new data and products
- Any other inquiries :
bps@shom.fr (special requests)
cc : dmi-rex-d@shom.fr (external relations)





Adresse postale

13 rue du Chatellier
CS 92803
29228 Brest CEDEX 2

Internet

www.shom.fr
data.shom.fr
diffusion.shom.fr

Renseignements

Tel. +33 (0) 2 56 312 312