

Paris, July 30th, 2015

N° 015 SHOM/DMI/REX/NP

LETTRE CIRCULAIRE ICCWG REGION F N° 04/2015
CIRCULAR LETTER REGION F ICC WG N° 04/2015

- Subject : Report on MBSHC19 decisions for Region F INT chart and ENC schemes.
- References : a) Decisions and actions¹ of the 19th MBSHC Conference (June 3th-July 2nd – Georgia) ;
b) Circular letter Region F ICCWG n°3/2015 dated May 22nd 2015 ;
c) Circular letter MEDINTCHART N°33 dated August 13th 2004 ;
d) S-11 Part. A Publication - edition 2.0.5 – May 2012.
- Enclosures : Annexe I – Region F ICCWG ToRs and RoPs ;
Annexe II – Details of the SC01 chart (Egypt) covering the northern part of the Suez Canal.

Dear colleagues,

Following up the decisions made at the 19th Conference of the Mediterranean and Black Sea Hydrographic Conference (in reference [a]), particularly **action MBSHC19/17**, please find hereafter a brief summary of the discussions held by the ICCWG in Batumi (Georgia), together with the decisions and actions approved by the MBSHC on the other hand.

Region F ICCWG side-meeting (June 30th and July 1st)

This 19th MBSHC Conference has been marked by the schedule of a Region F ICCWG side-meeting. This meeting has been the opportunity for the ICCWG Members to address some pending issues within that region and to take proper actions regarding them. This side-meeting **was** the occasion to remind the ICCWG Members on the

¹ http://www.iho.int/mtg_docs/rhc/MBSHC/MBSHC19/MBSHC19_Docs.htm

Terms of References and Rules of Procedures, as provided in annex I of that letter. In view of the positive outcome of this ICCWG meeting, the MBSHC Members tasked the new MBSHC Chair to coordinate, if necessary, the schedule of a half-day Region F ICCWG meeting prior to the 20th MBSHC Conference and, if needed, during the 19th International Hydrographic Conference or Assembly of 2017 (actions **MBSHC19/11** and **MBSHC19/30**).

Black Sea INT scheme

Regarding the coastal and approach scheme over Sulina, the common proposal elaborated in March 2014 by the Region F Co-ordinator (RCC) and the IHB, approved by RO and UA and submitted through circular letter in reference [b] was approved by the ICCWG. This proposal includes the inclusion of three new INT charts, as follows:

- RO 1.030.09 (**INT3908**) to cover the access to Sulina harbour (1:30 000),
- RO 1.050.06 (**INT3907**) to cover the southern approach (1:50 000),
- UA 3439 (**INT3819**) would cover the Northern approach (1:50 000).

The approach scheme of the Dnirov'ka gulf (Ukraine), northwest of the Black Sea, was also completed by the approval of two new INT charts, as submitted in the circular letter in reference [b]:

- UA3405 (**INT3890**) covering Ochakiv and the Pivdennyi Buh River (1:50 000),
- UA3506 (**INT3888**) covering Stanislav cape (1:25 000),

Going southwest of the Black Sea, the ICCWG addressed the proposal from GE to take over the production of three existing INT charts of the Approach scheme of the coast of Georgia, INT3871, INT3873 and INT3875 previously produced by RU. For the record, at the MBSHC16 (2009), RU proposed not produce those three charts due to lack of information. Since then, several actions were issued by the BASWG that recommended waiting until GE is a full IHO member to achieve the transfer. However, the non-participation of RU at the side-meeting, combined with a confusing wording of the BASWG actions on that topic let the ICCWG to hold the decision until RU and GE agree and report back to the RCC on the production of those three existing INT charts (action MBSCH19/19).

Besides, GE submitted three other national charts to the regional INT scheme: GE11 (1:300 000), covering the whole Georgian coasts, appears to interfere with the coverage of two existing INT charts, INT3810 and INT3808. The ICCWG then recommended GE to liaise with RU and TR for co-production of those two charts and to report back with (action MBSHC19/21).

Regarding the two other GE charts, **GE102** (1:50 000) and **GE104** (1:20 000), the ICCWG Members agreed to handle them by the mean of a dedicated circular letter for approval by silence procedure.

Aegean Sea coastal scheme

The co-production of **INT3706**, **INT3710**, **INT3712** and **INT3716** (1:300 000) between GR and TR within the coastal scheme of the Aegean Sea was discussed. GR came up with a new approach to solve that case, recommending the setup of a cartographic boundary based on technical considerations to use it as a fictional limit to clip digital datasets. Other approaches were also raised by Members as good practices, such as the

US-Canada ENC Trans-boundary Project or the Malacca Strait ENC Code. MBSHC Members agreed that, based on the provision of such technical way forwards, the technical discussions should be kept on bilaterally, tasking TR and GR to schedule a bilateral technical meeting by the end of 2015 (action **MBSHC19/16**).

Marmara Sea scheme

This status of this scheme was raised by the RCC due to the significant amount of pending chart proposals in the Marmara Sea. However, taking account of the recent submission of seven TR national charts in the Southeast part of the sub-region led the ICCWG to hold their decision until the issue of a specific silence procedure through circular letter (action **MBSHC19/18**).

Western Mediterranean coastal scheme

The review of that coastal scheme led to a common proposal by FR and ES for a new scheme in 2004 (letter in reference [c]). However, the following comments made by CSPCWG in response of that letter were never taken into account: the various scales used for that coastal scheme (from 1:150 000 to 1:425 000), the significant jump of scale between coastal and approach charts (from 1:425 000 to 1:25 000 in some area) and the fact that major ports like Cartagena and Barcelona are not covered by this coastal scheme. Therefore, the ICCWG Members considered that the punctual inclusion of national charts to fill the existing gaps was not relevant, and tasked FR, ES and DZ to liaise in order to come up with a consolidated coastal scheme (action **MBSHC19/22**). The ICCWG recommended them to take account of the consolidated ENC coverage of the sub-region for their forthcoming technical analysis.

Gulf of Trieste

The proposal of a coastal chart covering the entire Gulf of Trieste, submitted in 2007 by SI, has not shown any progress so far. The ICCWG consequently decided to withdraw this chart proposal from the draft MEDINTCHART catalogue.

Implementation of the Region F draft catalogue in the INTToGIS database

The INTToGIS project developments were presented by the IHB, for the purpose of being operational on January 1st 2016. Passed that date, the relevant information of publication S-11 part B will be transferred to INTToGIS, and the MBSHC password protected page containing the Region F draft catalogue removed. Besides, the provision of chart and insets limits by the ICCWG Members has been quite effective, and a consolidated version of the draft catalogue has then been transmitted to IHB to populate the INTToGIS database.

Region F ENC coverage

A full review of the UB1 overlapping cases was performed at the ICCWG side-meeting, based on the MBSHC17 decisions based on a case-by-case analysis achieved in 2010 by the RCC. Those different cases been characterized by different level of solvability, even though every MBSHC Members agreed on the need to comply with the WEND principles. Therefore, the MBSHC decided to task all ENC producer nations concerned by those UB1 overlaps (HR, GR, IT and TR) to liaise with each other under the coordination of IT and to report back to RCC on the resolution of those overlapping cases by the end of the year (action **MBSHC19/27**). The RCC will then report back to the MBSHC Chair (action **MBSHC19/28**) in order to take proper action, according to

the guidelines for the implementation of the WEND principles. The lack of improvement on the UB1 coverage status, leading to a disparate UB1 scheme, is actually in contradiction with a well-established small scale INT chart scheme covering the region. Besides, the persistency of those UB1 scheme overlapping cases and the significant domino effect associated with the resolution of UB2 and UB3 overlapping cases prevented the ICCWG from properly addressing UB2 and UB3 issues.

However, the proposal of focusing the work of ICCWG on the approval of larger scale usage bands, such as UB4-5-6, was adopted as an alternative to move forward on the approval of ENC schemes in the region (action **MBSCH19/29**).

Suez Canal INT chart scheme

EG informed the ICCWG on the availability of their national chart SC01 covering the northern part of the Suez Canal, and including the second canal built recently. This chart had actually been submitted to the Region J ICCWG prior to the MBSHC19 meeting, aiming to replace, together with SC02 chart covering the southern part of the canal, the current Region J chart INT7141 (GB233) covering the entire canal. According to the S-11 publication in reference [d] (3.10.1), '*Draft INT chart schemes should be circulated for comment to [...] the Coordinators of adjoining International Charting Coordination Working Groups, if the scheme impacts on their region*', so it is asked to the Region F ICCWG Members to provide their comments on the impact of this new SC01 chart (INT7156) on the Region F INT scheme, as adjoining regional ICCWG. For the moment, no changes in the Region F INT scheme are to be discussed or approved whatsoever. Region F ICCWG Members are requested to provide their comments on this matter to the Region F Coordinator **not later than September 1st 2015** (see annex II for more details).

On behalf of SHOM director general,
l'ingénieur en chef de l'armement Laurent Kerleguer
SHOM's Deputy Director in charge of international affairs
Region F International Charting Coordinator
Signé : Laurent Kerléguer

ANNEXE I
Region F ICCWG (MEDINTCHART)
Terms of References and Rules of Procedures

1. Background

1.1 The Mediterranean and Black Sea Hydrographic Commission recognizes the need to actively develop and maintain official nautical charts, in both paper and digital formats that support ships engaged on international voyages in its region. Accordingly, it appoints and directs a working group to undertake this task. The working group shall be named the Region F International Charting Coordination Working Group (Region F ICCWG) or MEDINTCHART.

[The Working Group's name is to appropriately reflect the designated area of responsibility and region, as described in S-11.]

1.2 The ICCWG is a subsidiary body of the Mediterranean and Black Sea Hydrographic Commission. It shall conduct its work in accordance with these Terms of Reference and Rules of Procedure. The Mediterranean and Black Sea Hydrographic Commission may clarify or amend these generic Terms of Reference and Rules of Procedure for the ICCWG in order for these to be made specifically relevant and applicable to its region. Its work is subject to the Hydrographic Commission's approval.

2. Terms of Reference

2.1 To study issues related to nautical charting of the region, in particular to coordinate the allocation of production responsibilities for paper and electronic charts (INT charts and ENC), that support ships engaged on international voyages.

2.2 To develop and maintain an integrated international chart scheme for the region.

2.3 To reach decisions on the maintenance and updating of the documents for which it is responsible.

2.4 To provide advice on chart schemes to individual Member States, in order to encourage adherence to IHO charting regulations, specifications and standards, and to promote and coordinate the production of international (INT) charts and ENC.

2.5 To develop proposals for new or amended INT chart schemes to meet evolving user needs (for example, the introduction of new or amended routeing measures, the confirmed developments of international ports).

2.6 To coordinate the development and maintenance of small / medium scale ENC schemes, by regional agreement, to ensure consistent parameters are used in the compilation of ENC.

2.7 To act as the custodian and maintainer of official, version-controlled catalogues, depicting the status of published and planned charts, subject to formal review and approval by Member States of the Mediterranean and Black Sea Hydrographic Commission. However, the ENC catalogues may be maintained by RENCs subject to Mediterranean and Black Sea Hydrographic Commission's approval.

2.8 To provide advice to IHB on any amendments required to maintain S-11 Part B: Catalogue of International Charts (for example, scale, limits, numbering) and, as appropriate, any corresponding ENC catalogue.

2.9 To provide advice to Chairman CSPCWG and IHB on any amendments required to maintain S-11 Part A „Guidance for the Preparation and Maintenance of International

Chart Schemes", in particular its Annexes (Annex A: Potential Printer Nations; Annex B: Use of A0 Paper).

2.10 To provide advice to Chairman CSPCWG and IHB on any amendments required to maintain the „Guidelines for the Preparation and Maintenance of Small / Medium Scale ENC Schemes" (when published).

2.11 To undertake professional consideration of new information of interest to the ICCWG which may impact its business and responsibilities.

3. Rules of Procedure

3.1 Membership is open to all members and associate members (Member States) of the Mediterranean and Black Sea Hydrographic Commission wishing to be represented. Each Member State shall be represented through a single point of contact. Noting the technical nature of the Group's work, participation should be limited to representatives of Hydrographic Offices concerned with nautical charting.

3.2 The Coordinator will monitor membership to encourage active participation by all chart-producing Member States within the Region.

3.3 Non-Governmental International Organizations recognized by the IHO may participate as observers in ICCWG activities, where matters of special interest to the NGIO concerned are being considered (IHO Resolution T1.2, rule 6.c refers).

3.4 The Coordinator role shall be held by a Member State participating in the ICCWG. The election of the Coordinator, or the reconfirmation of the existing Coordinator, shall be decided by the [Region] Hydrographic Commission at an ordinary meeting or, where a meeting is not convened, by correspondence. Election shall be determined by a simple majority of Member States present and voting (or responding, where determined by correspondence).

3.5 Normally, a Vice-Coordinator is not required to be appointed. However, if a Vice-Coordinator is appointed by the Mediterranean and Black Sea Hydrographic Commission:

- Election to the post will be by the same method as for the Coordinator;
- The Vice-Coordinator shall act as the Coordinator, with the same powers and duties, in the event that the Coordinator is unable to carry out the duties;
- The Coordinator and Vice-Coordinator will decide between them the organization of the work entailed in these posts, or these may be defined by the Mediterranean and Black Sea Hydrographic Commission.

3.6 Conduct of business will be primarily by correspondence. If meetings are required, these should be planned with due regard to efficiency and obtaining the fullest membership support (for example, by holding meetings in association with meetings of the Mediterranean and Black Sea Hydrographic Commission). All members shall inform the Coordinator in advance of their intention to attend meetings of the ICCWG. The working language shall be English.

3.7 Draft proposals will be circulated for review and comment to:

- All members of the ICCWG and, where appropriate, all members of the Mediterranean and Black Sea Hydrographic Commission;
- Coordinators of adjoining regional ICCWG, if the scheme impacts on those regions (for example, to ensure consistency and coherence of coverage across regional boundaries, for the allocation of chart numbers);
- Hydrographic Offices producing or printing charts of the Region;
- Chairman CSPCWG, if independent advice is required.

3.8 Decisions shall be made by consensus.

3.9 Where required, a Work Plan should be developed and maintained. This should include task priorities and the expected time frames for progressing tasks. The Mediterranean and Black Sea Hydrographic Commission may delegate tasks to the ICCWG as it sees fit; it is also available to provide guidance on request (for example, in respect of priorities).

3.10 The Coordinator will report progress to meetings of the Mediterranean and Black Sea Hydrographic Commission and at other reasonable times, on request. Reports shall include but are not limited to:

- An updated Regional INT Chart Catalogue;
- An update of the ENC Catalogue relevant to the Region (if not undertaken by RENCs);
- Changes made to the scheme of INT Charts for the Region, approved by the ICCWG since the last report, together with a summary of reasons;
- Changes made to the small / medium scale ENC scheme for the Region, approved by the ICCWG since the last report, together with a summary of reasons;
- An updated Work Plan (if used).

3.11 All participants, including Mediterranean and Black Sea Hydrographic Commission members and associate members where not directly represented in the ICCWG, shall keep the Coordinator informed of any information relevant to the ICCWG. This may include:

- Submitting proposals for new INT Charts, or amendments (for example, to limits, scale of portrayal) to existing INT Charts, in the Region;
- Requesting new INT Chart numbers for new charts that are planned;
- Reporting the status of production of international charts (INT Charts and ENC).

3.12 ICCWG members shall respond in a timely manner to all reasonable requests for advice from the Coordinator (for example, requests for updating the Catalogue of the INT Charts of the Region, change in points of contact), abiding by all reasonable stated deadlines.

3.13 The work shall be done in accordance with:

- K2.19: 'Principles of the Worldwide Electronic Navigational Chart Database (WEND)', to ensure a world-wide consistent level of high-quality, updated ENCs;
- S-57: 'IHO Transfer Standard for Digital Hydrographic Data';
- S-11 Part A: 'Guidance for the Preparation and Maintenance of International Chart Schemes';
- S-4: 'Chart Specifications of the IHO and Regulations for International (INT) Charts', which provides the internationally-agreed product specification for both national and international (INT) charts;
- S-65: 'ENC Production Guidance'.

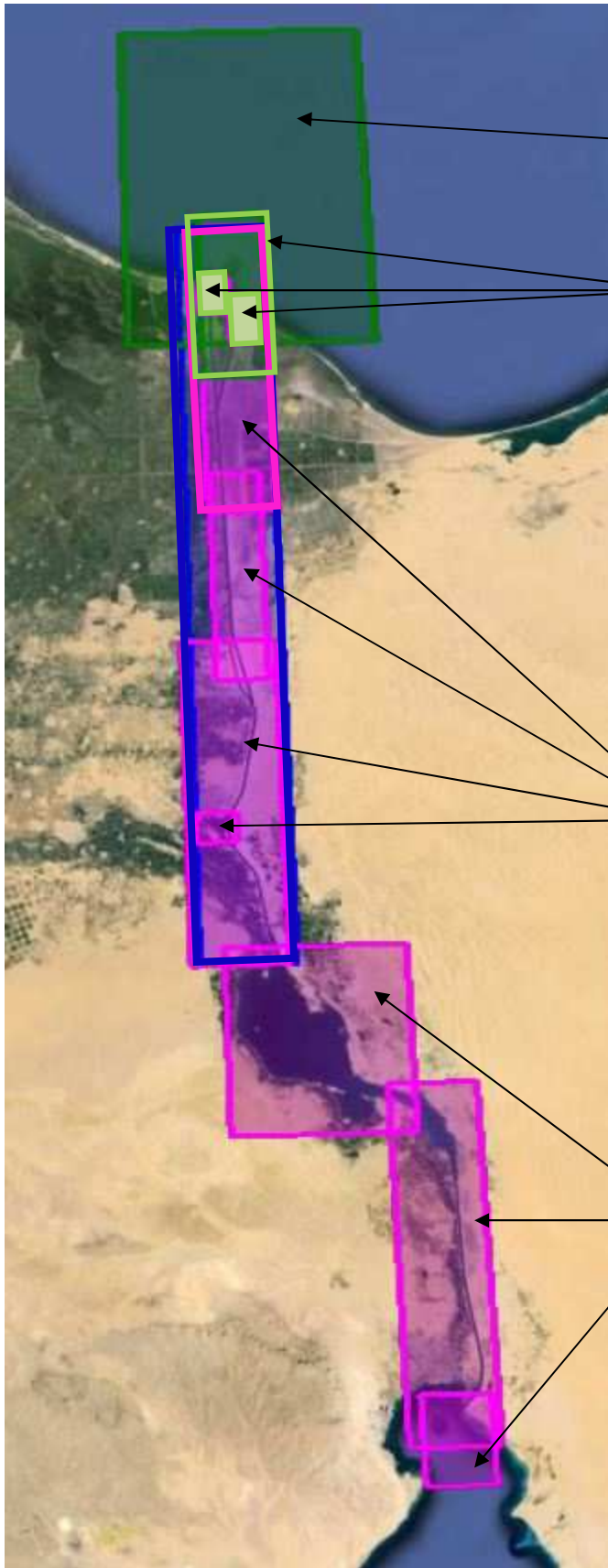
4. Additional MBSHC16 decisions

4.1 The 16th MBSHC Conference held in 2009 agreed on the following additional rules of procedures regarding the work of the Region F ICCWG:

- every decision can be reconsidered provided valid technical arguments are presented;
- no formal agenda will be issued prior to ICCWG meeting (correspondence by email only);
- all decisions made at ICCWG meetings will be disseminated by circular letter to MBSHC Member States afterwards;
- consensus is required prior implementation of any decisions.

ANNEXE II

Details of the SC01 chart (Egypt) covering the northern part of the Suez Canal.



REGION F
INT3548 (UK)
(dark green color)
Outer Approaches to Port Saïd
(1:50 000)

REGION F
INT3549 (UK)
(chart limits in light green)
Approaches to Port Saïd (Bur Sa`id)
(1 :25 000)
A-Suez Canal Container Terminal
(1 :12 500)
B - Port Saïd (1 :12 500)

REGION J
SC01 (EG) – INT7156
(chart limits in blue color, insets in pink)
Suez Canal (Port Saïd to Great Bitter Lake)
(1 :40 000)
A-Port Saïd
B-Al Kaab to Al Kantara
C-New Expansion Channel
D-Al Temsah Lake (1:12 500)

REGION J
SC02 (EG) – INT7159
(Insets in pink)
Suez Canal (Great Bitter Lake to Gulf of Suez)
(1 :40 000)
E-Great Bitter Lake
F-Kabret to Suez Bay
G-Port Taufiq to Gulf of Suez